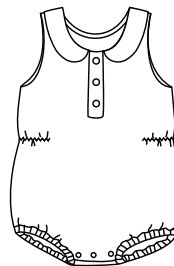




# ikatee

French Sewing Patterns for Kids



## **SYDNEY**

Peter Pan collar bonus  
1, 3, 6, 12, 18 and 24 months

**Skill level: easy**

## PRODUCT DESCRIPTION

This bonus will allow you to sew a Peter Pan collar on the Sydney pattern. The bonus contains only the Peter Pan collar, the pattern for the garment can be purchased in paper or PDF format on our website. Sydney is an unisex romper, long sleeve or sleeveless, with many options.

The necklines of the long sleeve and sleeveless versions are different, so we offer two different Peter Pan collars. Be careful to select the one that suits your version.

### A timeless collar that will sublimate your romper!



## FABRICS AND SUPPLIES

- Woven: poplin, batiste, double gauze, linen, chambray, light denim, tencel, plumetis
- Knit: jersey, interlock, pointelle knit
- Thin fusible interfacing

Age		1m	3m	6m	12m	18m	24m
Height (cm)		53	60	67	74	81	86
Fabric - 140 cm (whole garment)	sleeveless	40	45	50	50	55	55
Fabric - 55"	(in yard)	½	½	½	½	¾	¾
	long sleeves	55	60	65	70	75	85
	(in yard)	¾	¾	¾	¾	1	1
Fabric - 140 cm (collar only)	sleeveless	15	20	20	20	20	20
Fabric - 55"	(in yard)	⅛	¼	¼	¼	¼	¼
	long sleeves	15	15	15	20	20	20
	(in yard)	⅛	⅛	⅛	¼	¼	¼

Some tips before starting...

## HOW TO PICK THE RIGHT SIZE

The pattern goes from 1 month to 24 months. It is recommended that you look at the measurements of the child for whom the product is intended first and choose the most appropriate size. Most important measurement is the height. Katee generally proposes sewing patterns that fit to age (first check the height and see the matching age). Do not oversize!

**European standard measurement guideline** (in cm):

age	1m	3m	6m	12m	18m	24m
height (cm)	53	60	67	74	81	86
waist measurement	36	40	44	48	50	50

## PDF PRINTING AND ASSEMBLY

1. Select the file for the right age you are planning on making.
2. **Print at scale 100%**. I highly recommend that you check the size of print is correct and at scale. Print only the first page and measure that the scales of 3 centimeters or 1 inch box on the sewing pattern to make sure that the size of your print is correct. **You can print on either A4 or US Letter pages.** The pattern will fit both sizes.
3. **Put the pages together** according to the diagram that's on first page (following the order 1, 2, 3, etc) and match the black triangles together to form squares. The print margins around the pages are to be cut or folded, and removed. **Use tape to stick the pages together** especially inside pattern pieces.
4. **Cut** around the cutting lines (seam allowances are included).
5. **Check with the diagram** underneath that you have all pieces markings and notes.

## FABRIC PREPARATION

Iron the fabric (preferably with steam) to stabilize it and facilitate the installation of the pattern. It is recommended to wash the fabric before to soften it and to avoid any shrinkage after cutting.

## CHOICE OF SPECIFIC FABRICS

In the case of patterned fabrics:

- "direction" pattern: pieces are cut in the same direction.
- checkered pattern: it is important to make sure to match patterns.
- "without direction" pattern (small flowers or polka dots): no specific precautions.

All sizes: pages 1 and 2

1 month: page 3

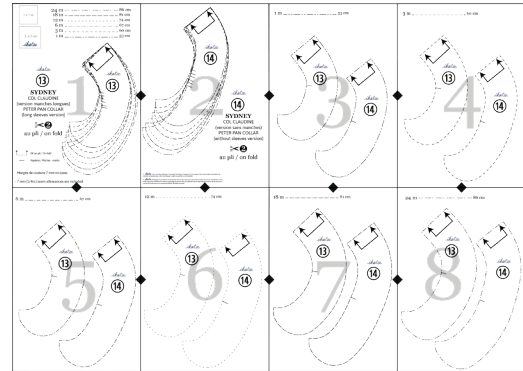
3 months: page 4

6 months: page 5

12 months: page 6

18 months: page 7

24 months: page 8



# CUTTING

Seam allowances are included in the pattern






## PATTERN PIECES

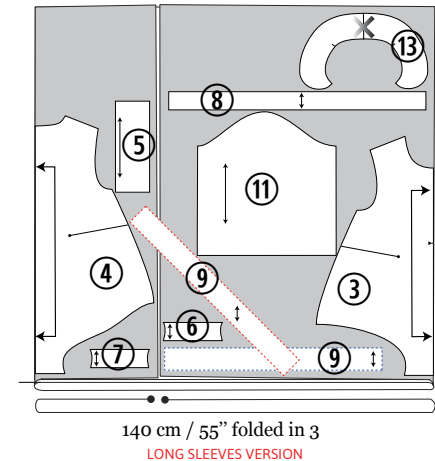
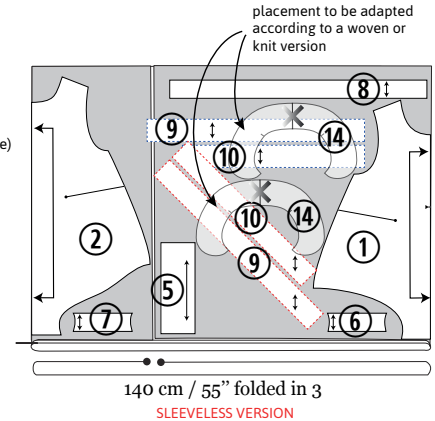
- ⑬ PETER PAN COLLAR (long sleeves version):  $\approx$  2 on fold
- ⑭ PETER PAN COLLAR (sleeveless version):  $\approx$  2 on fold

Depending on the fabric used to make the collar, if it is a little thick, do not hesitate to add a few millimeters to the piece ⑨ neckline band. The band when sewn will be a little wider, but will better cover all seam allowances.

## CUTTING LAYOUT INSTRUCTIONS

- The following fabric layouts are for a fabric width of 140 cm (55").
- The fabric is folded in 3 along the grainline right sides together. The border lines are the cutting lines, including the seam allowances (= 7mm (1/4") except specific indications).

-  Pattern pieces
-  Fabric wrong side
-  WOVEN FABRIC (bias)
-  KNIT FABRIC (grainline)
-  DRAW IN MIRROR
- ⑨ piece to be cut only once on a single thickness of fabric



# STEP-BY-STEP INSTRUCTIONS

How to...

**Caption:**

right side

R/R: with right sides together

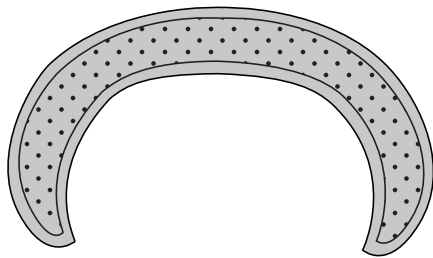
wrong side

W/W: with wrong sides together

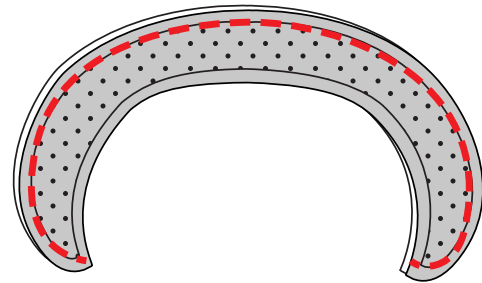
## A. LAY OUT THE PATTERN PIECES, CUT AND INTERFACING

- 1 Place the Peter Pan collar piece according to the cutting layout instructions and following the grainline. Pin the piece on the fabric, mark the outlines corresponding to the cut lines and carefully retrace other information and markings. Cut the piece and control it.

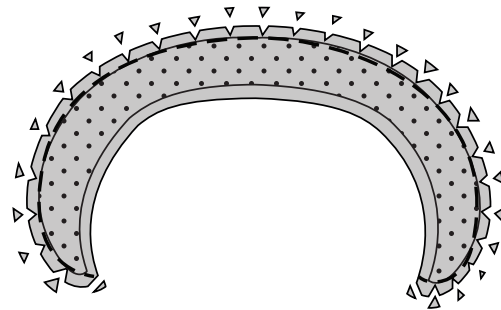
## B. ASSEMBLE PETER PAN COLLAR



- 2 Fuse on the wrong side a Peter Pan collar, removing the seam allowances to avoid over-thicknesses. This will be the Peter Pan collar on top.



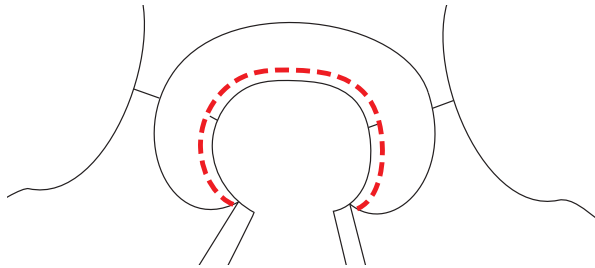
- 3 Place R/R the two Peter Pan collars and stitch at 7 mm ( $\frac{1}{4}$ ") into the outer curve. To ensure a perfectly symmetrical collar, draw the stitch line at 7 mm ( $\frac{1}{4}$ ") into the curve and stitch exactly along this line.



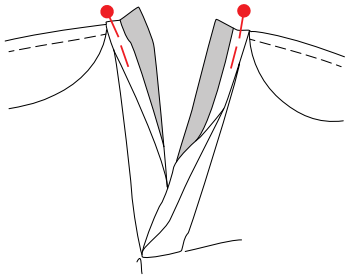
- 4 Trim the seam allowance to 5 mm ( $\frac{1}{8}$ "), notch the rounding every cm, otherwise the collar will not form well. Turn inside out, mark the rounding and press.

## C. ASSEMBLE PETER PAN COLLAR TO THE NECKLINE

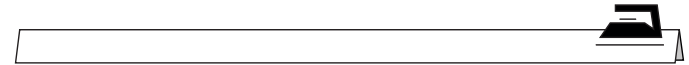
Collar assembly begins just after step 8 of the guidebook (shoulder assembly).



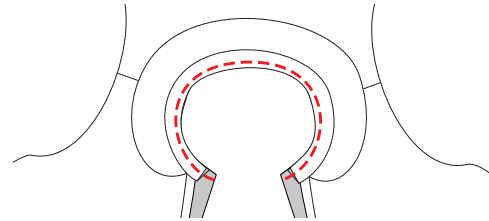
- 5** Place collar along neckline, on the right side (fused collar is on top). Align the middle of the back with the middle of the collar, and the marks with the shoulder seams. Collar should end just before the button plackets. Stitch at 5 mm ( $\frac{1}{8}$ " ) into the seam allowances, from one end of the collar to the other to hold the collar in place (be careful not to stitch the button plackets yet).



- 6** Fold the top of the button plackets R/R to the front and pin to hold in place.

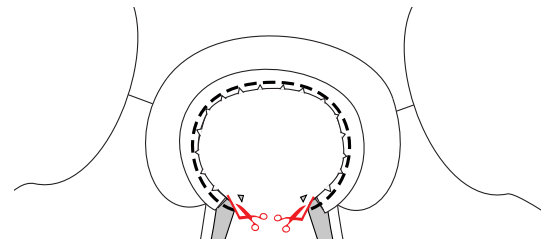


- 7** Fold the neckline band in half along its length W/W and iron well.

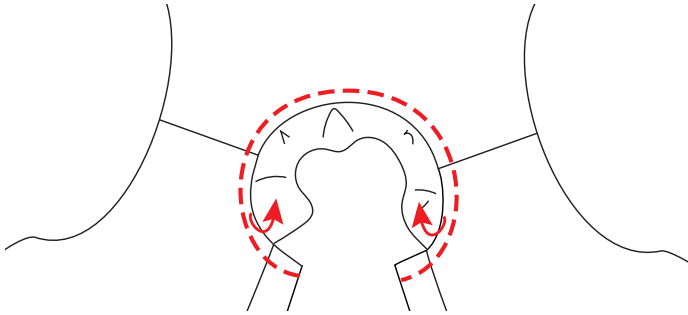
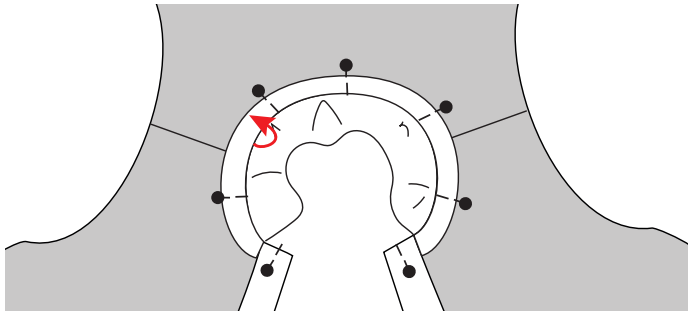


The neckline band is longer than the neckline, once pinned properly, cut off the excess.

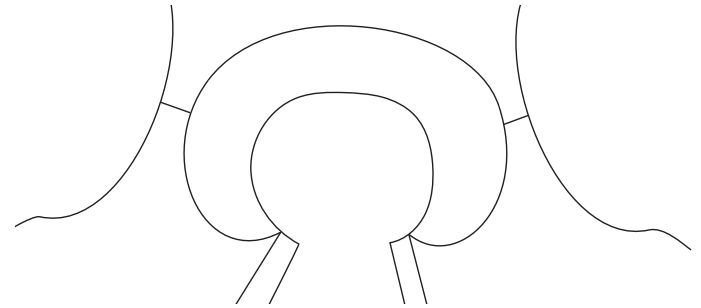
- 8** Place the folded in two neckline band R/R, raw edges along the neckline. Start and finish it at about half of the button plackets (avoids excess thickness at the corners). Stitch at 7mm ( $\frac{1}{4}$ " ) all around the neckline, from one end of the button placket to the other. The collar is therefore sandwiched between the band and the body.



- 9** Trim the seam allowances to 4mm ( $\frac{1}{8}$ " ), notch in the rounds every few centimeters and trim off the corners.



- 10** Turn the band on the wrong side of the garment and the button plackets on their right side. Pin the band inside the garment and baste to hold in place. Stitch on the outside of the garment to avoid wrinkling (with the sewing machine). Fold back the collar so that it is not caught in this seam. Remove the baste thread with a seam ripper.



- 11** Iron well the Peter Pan collar in place. Once the Peter Pan collar is assembled, continue assembling the romper according to the guidebook, from step 17 (sleeveless version) or 21 (long sleeve version).

© *ikatee* est une marque déposée. Ce produit (patron et livret d'instructions) est limité à l'usage privé. Son usage à titre commercial ou industriel est interdit. La reproduction, vente ou échange, totale ou partielle en est interdite.

© *ikatee* All designs and patterns are protected. This product is for your personal use only. You are not permitted to share, resell or give this pattern, its guidebook or their content, in any form to anyone else. No material may be reproduced in part or whole. Any commercial and industrial use is strictly prohibited. All rights reserved.