

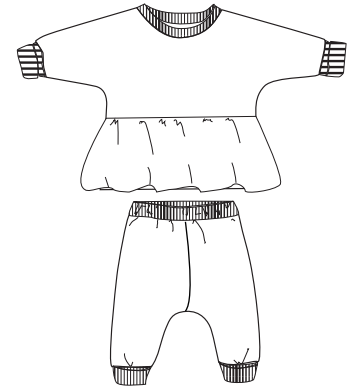
ikatee

French Sewing Patterns for Kids



TUTORIAL

This tutorial explains how to modify the Sacha pattern to obtain a top with a ruffled basque to feminize the knit set. It is also possible to combine different materials for a very fancy effect.



SACHA

Ruffle bonus

3, 4, 5, 6, 7, 8, 9, 10, 11, 12 years

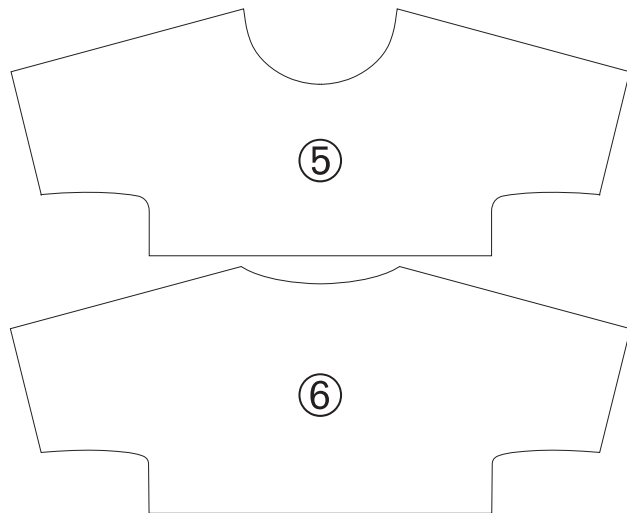
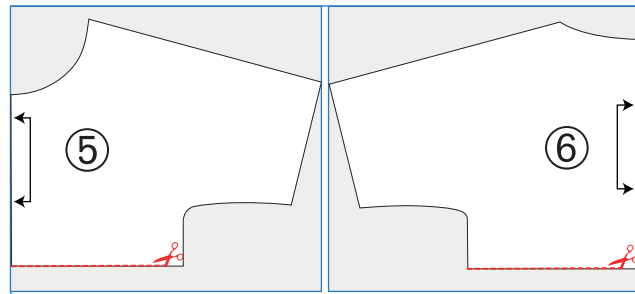
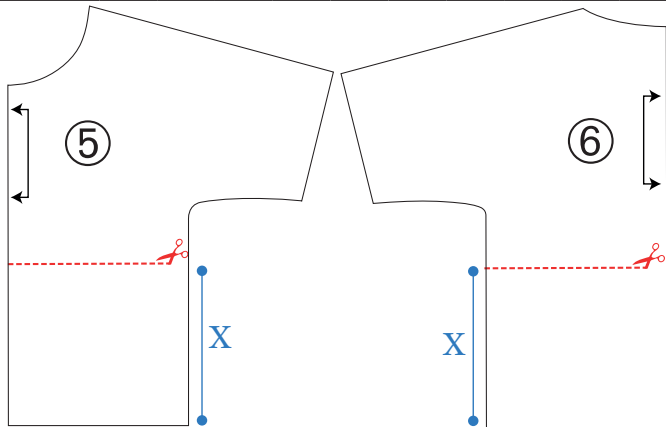
Skill level: easy

PATTERN MODIFICATION

Trace the pattern (pieces #5 and 6)

- 1 Modify the front and back (pieces #5 and 6): reproduce the tracing #5 and 6 of the Sacha pattern pieces on a pattern paper or tissue paper. Reduce the height by drawing a cutting line at X from the bottom (see table below). Cut the pattern pieces according to the line.

Age	3y	4	5	6	7	8	9	10	11	12
Distance X - cutting line	6 ½ in (16 cm)	6 ¾ (17 cm)	7 ¼ (18 cm)	7 ½ (19 cm)	8 (20 cm)	8 ¼ (21 cm)	8 ¾ (22 cm)	9 (23 cm)	9 ½ (24 cm)	10 (25 cm)

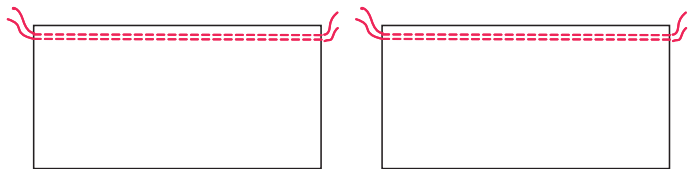


- 2 Trace on the wrong side of the fabric, at the fold, pieces #5 and 6. Cut the pieces in the fabric.

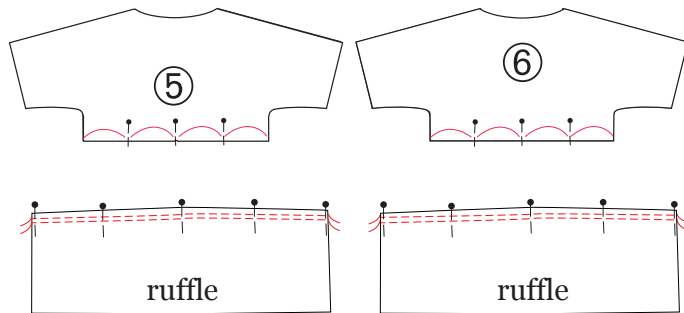


3 Draw on pattern paper a new rectangular piece of the size indicated on the chart to form the ruffle. Fold the fabric for the ruffle in half. Place the rectangle, but not at the fold. Cut the rectangle. The result is two rectangles, which are the ruffles.

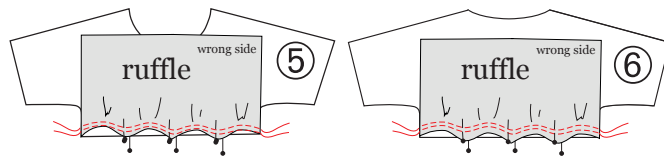
Age	3y	4	5	6	7	8	9	10	11	12
ruffle piece H*L	7 ¾ in* ¾ yd (18* 76 cm)	5 ¼ in* ¾ yd (19* 78 cm)	5 ½ in* ¾ yd (20* 80 cm)	6 in* 1 yd (21* 82 cm)	6 ¼ in* 1 yd (22* 84 cm)	6 ¾ in* 1 yd (23* 86 cm)	7 ¼ in* 1 yd (24* 88 cm)	7 ½ in* 1 yd (25* 90 cm)	7 ½ in* 1 yd (26* 92 cm)	7 ½ in* 1 yd (27* 94 cm)



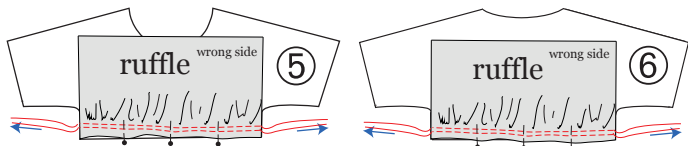
4 Stitch along the rectangles two lines of gathering threads (¼ inch or 0,5cm apart) with long stitches and low thread tension. Do not make any stop stitches at the beginning or at the end of the seam.



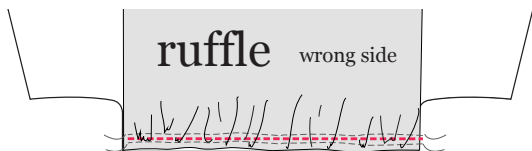
5 Divide the bottom of the front and then the back into four equal parts and mark with pins. Then repeat the operation on the top of the two ruffles.



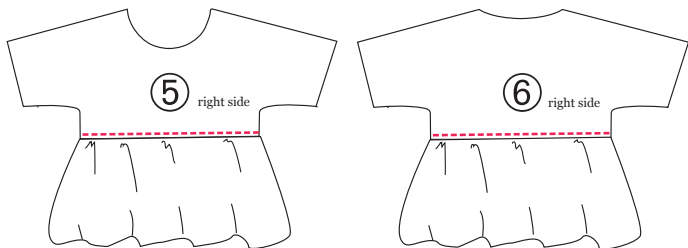
6 Place the top of the ruffle with right sides together against the lower body, front and back. Align the pins and pin together.



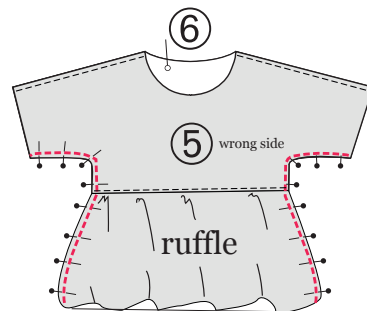
- 7** Pull the gathering threads, gather until the edges of the ruffle are aligned at the bottom of the body.



- 8** Sew between the two gathering threads, on the front and on the back. Then remove the gathering threads with a seam ripper. Finally, overcast or overlock the edges.



- 9** Fold the ruffle down, fold the seam allowances up, iron carefully and topstitch flush with the seam allowances, right side up, to hold in place.



- 10** Position the front and back with right sides together, making sure to align the ends of the ruffle. Pin the sides and bottom of the sleeves and stitch $\frac{1}{4}$ inch (0,7cm) from the edge, before overcasting or overlocking the edges together.

- 11** It's almost over! The rest of the assembly is to do as for Sacha (see the guidebook of your Sacha pattern). This is a nice and very feminine option.



© *ikatee* All designs and patterns are protected. This product is for your personal use only. You are not permitted to share, resell or give this pattern, its guidebook or their content, in any form to anyone else. No material may be reproduced in part or whole. Any commercial and industrial use is strictly prohibited. All rights reserved.