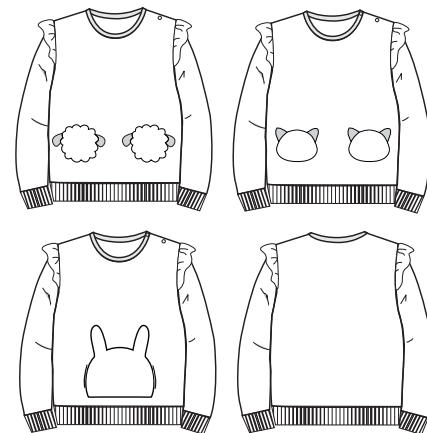




# ikatee

French Sewing Patterns for Children



## SINTRA

**Ruffle bonus**

6-12-18-24m-3y-4y

**Skill level : easy**

## TUTORIAL

How to modify Sintra to add ruffles at armholes.

## SUPPLIES

for the ruffles

age	6m	12m	18m	24m	3a	4a
height (cm)	67	74	81	86	98	104
Fabric with ruffles 140cm wide	35	35	40	40	45	60

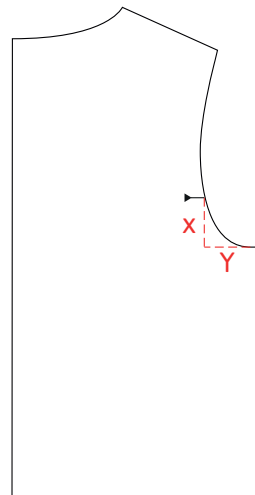
### RUFFLES FABRIC

- knitted fabric : jersey, french terry, fleece
- lace band or broderie anglaise



## SEWING PATTERN ADAPTATION

notches at armholes

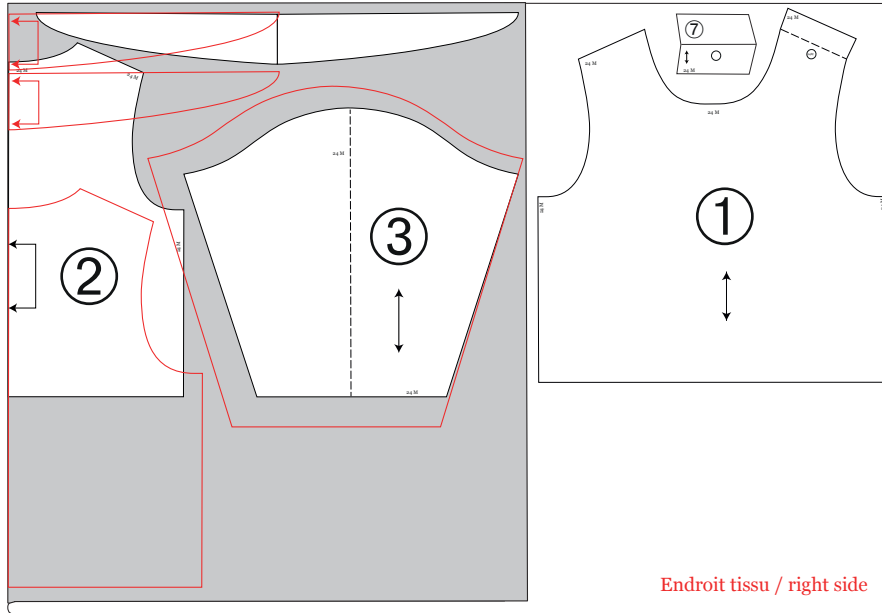


notches to report  
on pieces ① and ②



age	6m	12m	18m	24m	3a	4a
height (cm)	67	74	81	86	98	104
X (cm)	3	3	3	3	3	3
Y (cm)	3,5	3,8	4	4,5	4,8	5

# CUTTING

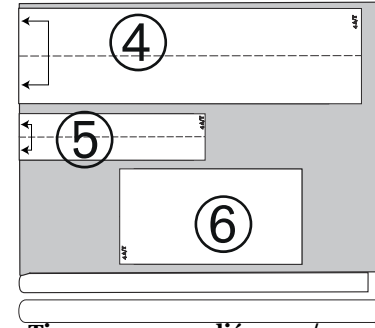
Seam allowances are included



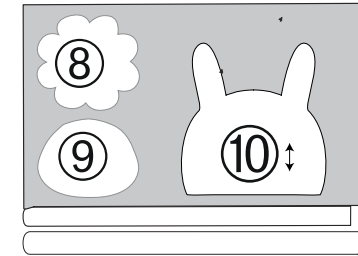
Tissu 1 : 140 cm plié en 2 / fabric 1 : 140 cm folded in 2

-  Pièces du patron / pattern pieces
-  Envers tissu / wrong side

**6m, 12m, 18m, 24m, 3a**  
**en rouge 4a / in red 4y**



Tissu 2 : 70 cm plié en 2 /  
 Fabric 2 : 70 cm folded in 2



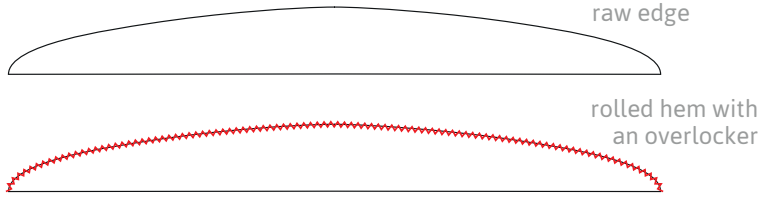
Tissu 3 : plié en 2 /  
 Fabric 3 : folded in 2



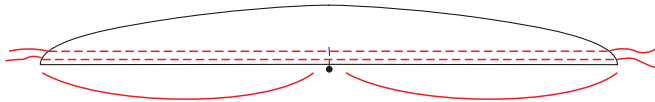
# STEP-BY-STEP INSTRUCTIONS

Illustrations and tips...

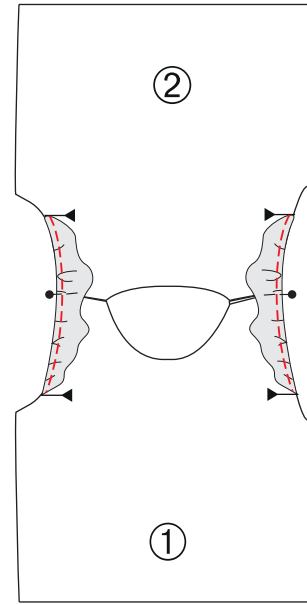
- 1 Follow the Sintra sweater guidebook up to step #13, before assembling the sleeves. Mark the notches at armholes on pieces ① and ②. Cut the ruffle piece provided as a bonus according to the cutting plan.



- 2 For the finishing of the ruffles (on the rounded part), two possible methods: 1st method: let raw edge, it will not fray but will roll naturally a little. 2nd method: do a rolled hem with 3 threads using the serger/overlocker.



- 3 Stitch 2 parallel rows of gathering threads on opposite straight edges (long stitch and low thread tension). Be careful not to stop the threads at the beginning and end of stitching. Divide the ruffles in half and mark their center with a pin.



- 4 Place the ruffles on the armholes with right sides together. Align raw edges: the pin corresponds to the shoulder seam on one side and the middle of the shoulder placket on the other. Both ends line up with the notches you have previously marked. Pull on the gathering stitches (2 under bobbin) until you get the same width as the armholes. Stitch together 5mm from the edge in the seam allowance to hold the ruffles in place.

- 5 Assemble sleeves by following the Sintra sweat guidebook (step 14). The ruffles are sandwiched between the body and the sleeves. Then, just see the guidebook to go ahead with other instructions. This is a cute option for the Sintra sweatshirt!

© *ikatee* est une marque déposée. Ce produit (patron et livret d'instructions) est limité à l'usage privé. Son usage à titre commercial ou industriel est interdit. La reproduction, vente ou échange, totale ou partielle en est interdite.

© *ikatee* All designs and patterns are protected. This product is for your personal use only. You are not permitted to share, resell or give this pattern, its guidebook or their content, in any form to anyone else. No material may be reproduced in part or whole. Any commercial and industrial use is strictly prohibited. All rights reserved.