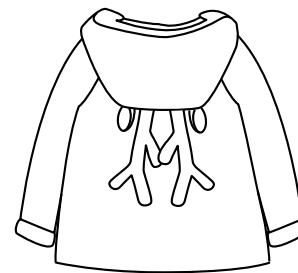




ikatee

French Sewing Patterns for Kids



GRAND'OURSE & GRAND'OURSE KIDS

Reindeer bonus
6, 12, 18, 24 months, 3, 4, 5, 6, 7, 8, 9, 10, 11
and 12 years

Skill level: easy

www.ikatee.com

PRODUCT DESCRIPTION

This bonus will allow you to sew reindeer ears and antlers on your Grand'Ourse and Grand'Ourse kids patterns. The bonus offered contains only the ears, the pattern of the garment is to be purchased in paper version or PDF on our site. Grand'Ourse and Grand'Ourse kids allow you to make a vest, a jacket, a coat, a rain-coat or a bathrobe (depending on the options and fabrics chosen).

A winter version, ideal for the holidays!



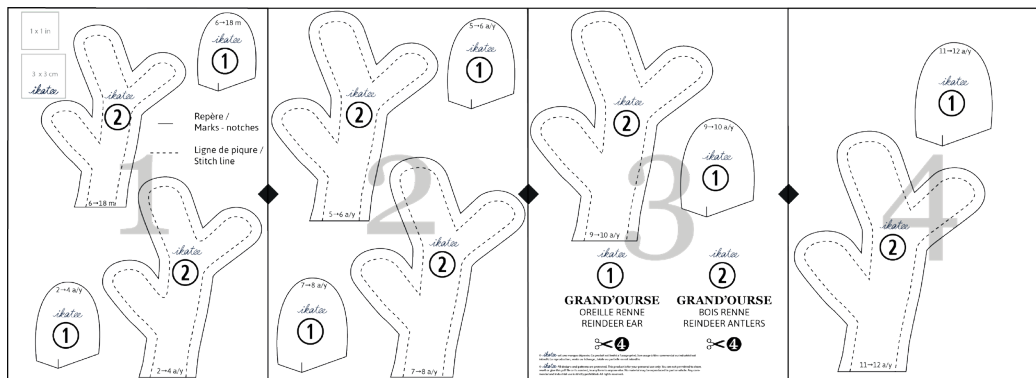
FABRICS AND SUPPLIES

- You will need a 20 x 60 cm (HxW) (8" x 24") rectangle to cut all the pieces. Otherwise, you can easily place them in the scraps of your outer fabric and lining. Avoid fabrics that are too thick for the antlers, otherwise they will be difficult to turn inside out.
Recommended fabrics: jersey, fleece, interlock, fine sherpa, corduroy, flannel, fine denim, nicky velour.
- You will also need fiber fill for the antlers, this helps to give them more hold.



PDF PRINTING AND ASSEMBLY

1. Select the file for the right age you are planning on making.
2. **Print at scale 100%**. I highly recommend that you check the size of print is correct and at scale. Print only the first page and measure that the scales of 3 centimeters or 1 inch box on the sewing pattern to make sure that the size of your print is correct. **You can print on either A4 or US Letter pages.** The pattern will fit both sizes.
3. **Put the pages together** according to the diagram that's on first page (following the order 1, 2, 3 etc) and match the black triangles together to form squares. The print margins around the pages are to be cut or folded, and removed. **Use tape to stick the pages together** especially inside pattern pieces.
4. **Cut** around the cutting lines (seam allowances are included)
5. **Check with the diagram** underneath that you have all pieces markings and notes.



PATTERN PIECES

- ① REINDEER EARS: \approx 2 (one right, one wrong side) outer fabric + \approx 2 (one right, one wrong side) lining
- ② REINDEER ANTLERS: \approx 4 (two right, two wrong side) outer fabric and lining

7mm (¼") seam allowances are included in the pattern.

4 pages to print out (all sizes)

- 6 months to 4 years page 1
- 5 to 8 years page 2
- 9 to 10 years page 3
- 11 to 12 years page 4

STEP-BY-STEP INSTRUCTIONS

How to...

outer fabric
right side

lining
right side

R/R: with right sides
together

outer fabric
wrong side

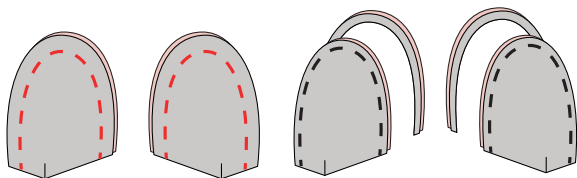
lining
wrong side

W/W: with wrong sides
together

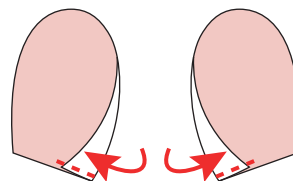
A. LAY OUT THE PATTERN PIECES, CUT AND INTERFACING

1 Place all the pattern pieces according to the cutting layout instructions and following the grainline. Pin the pieces on the fabric, mark the outlines corresponding to the cut lines and carefully retrace other information and markings. Cut the pieces and control them.

B. EARS

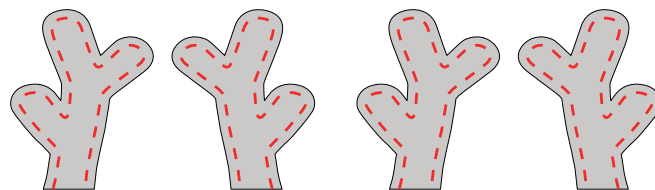


2 Place ears in outer fabric and lining R/R. Stitch the round part to 7 mm (¼"). Trim seam allowances to 4 mm (⅛"). Turn ears inside out on the right side.

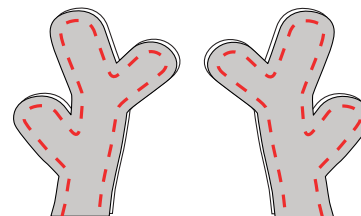


3 Fold the base of the ear according to the mark on the pattern. Stitch in the seam allowances to hold in place.

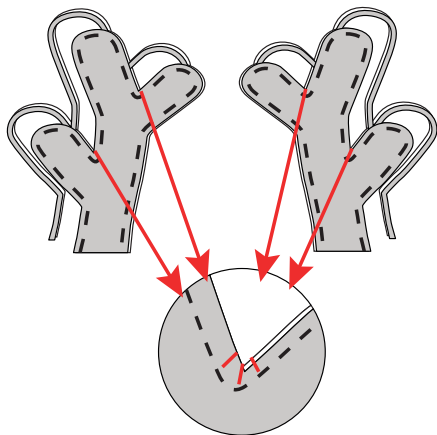
C. ANTLERS



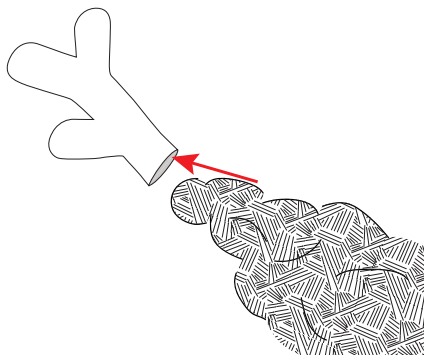
4 Transfer the dotted stitching line indicated on the pattern to the wrong side of the antlers.



5 Place R/R antlers and stitch at 7 mm (¼") all the way around (except at the base) along the stitch line.

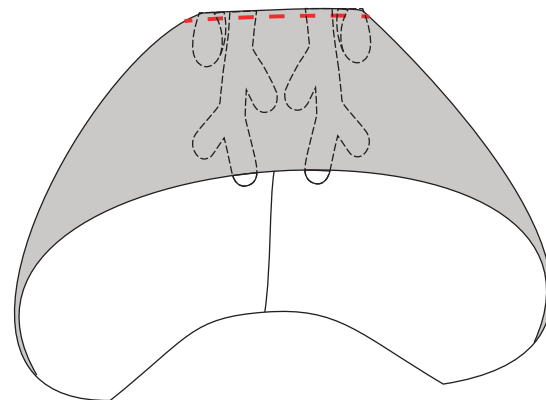


6 Trim seam allowances to 4 mm ($\frac{1}{8}$ ") and notch in the rounding. Turn the antlers inside out. Be careful not to use a fabric that is too thick for the antlers, otherwise they will be difficult to turn inside out.



7 Stuff the woods with fiber fill. Start at the high ends and work your way down.

D. ASSEMBLE TO THE HOOD



8 The back of the outer hood has been stitched (step 24 or 33 of the guidebook). Fold the hood so that the previously sewn seam match to the center line, R/R. Slide the ears and antlers into the seam, aligning the edges, back of the ear and antlers against the back of the hood. Pay attention to the direction, follow the diagram. Pin and stitch at 7 mm ($\frac{1}{4}$ ").

9 Continue the assembly by following the pattern guidebook.

© *ikatee* est une marque déposée. Ce produit (patron et livret d'instructions) est limité à l'usage privé. Son usage à titre commercial ou industriel est interdit. La reproduction, vente ou échange, totale ou partielle en est interdite.

© *ikatee* All designs and patterns are protected. This product is for your personal use only. You are not permitted to share, resell or give this pattern, its guidebook or their content, in any form to anyone else. No material may be reproduced in part or whole. Any commercial and industrial use is strictly prohibited. All rights reserved.