

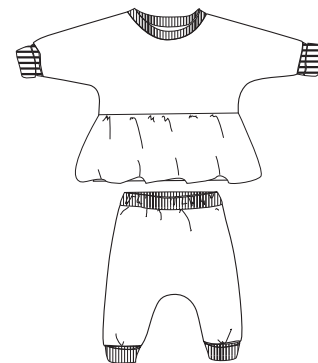


TUTORIAL

This tutorial explains how to modify the Cordoba sewing pattern to get a top with ruffle. The outfit will be more girly. It is possible to mix fabrics for a fancy look.

ikatee

French Sewing Patterns for Kids



CORDOBA

Bonus : Top with ruffle

1-3-6-12-18-24m-3y-4y

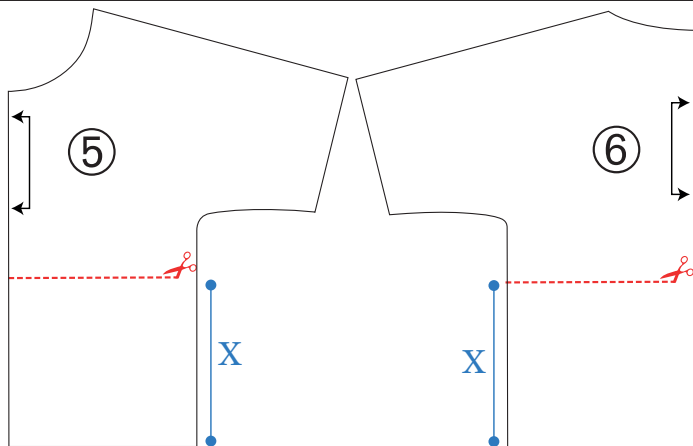
Skill level : easy

SEWING PATTERN ADAPTATION

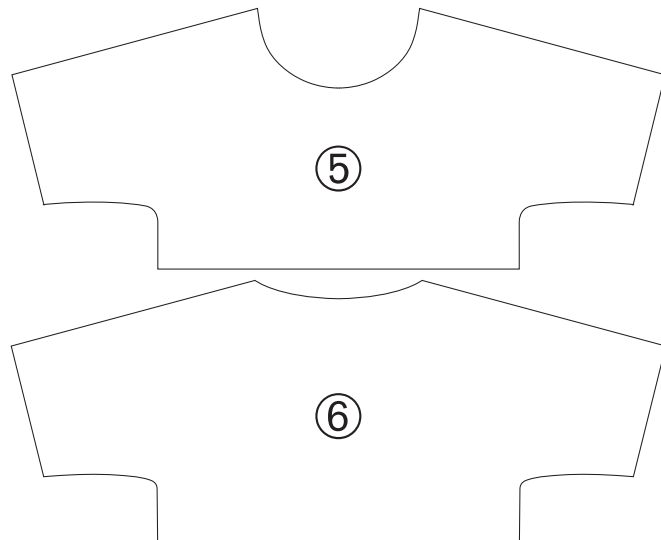
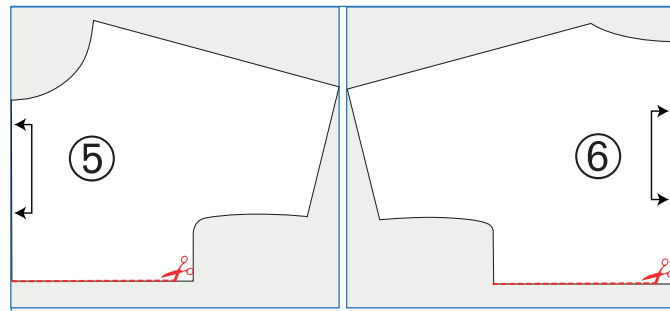
Redraw the Cordoba # ⑤ X ⑥ pieces

- 1 Modify front and back bodice (# ⑤ X ⑥ pieces) : redraw # ⑤ X ⑥ pieces on a silk paper. Reduce height : draw a new cutting line at Xcm from bottom edge. Cut out pieces.

age	1m	3m	6m	12m	18m	24m	3y	4y
child's height (cms)	53	60	67	74	81	86	98	104
"X"= cutting line position from bottom	10cm	11	12	13	14	15	16	17



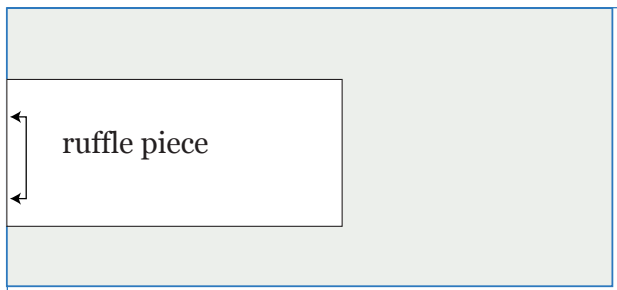
- 2 Lay out # ⑤ X ⑥ pieces on fold of fabric. Draw # ⑤ X ⑥ outline. Cut out fabric pieces.



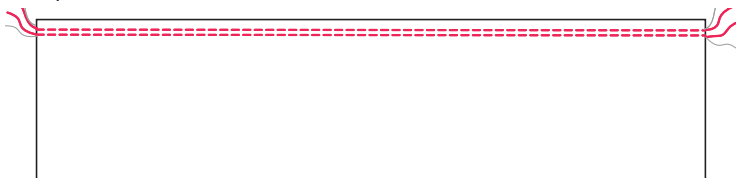
3 Draw a new piece on silk paper (rectangle for the ruffle):
measurements are in centimeter

age	1m	3m	6m	12m	18m	24m	3y	4y
Child's height (cms)	53	60	67	74	81	86	98	104
Ruffle piece H*L	12*52	13*56	14*60	15*64	16*68	17*72	18*76	19*80

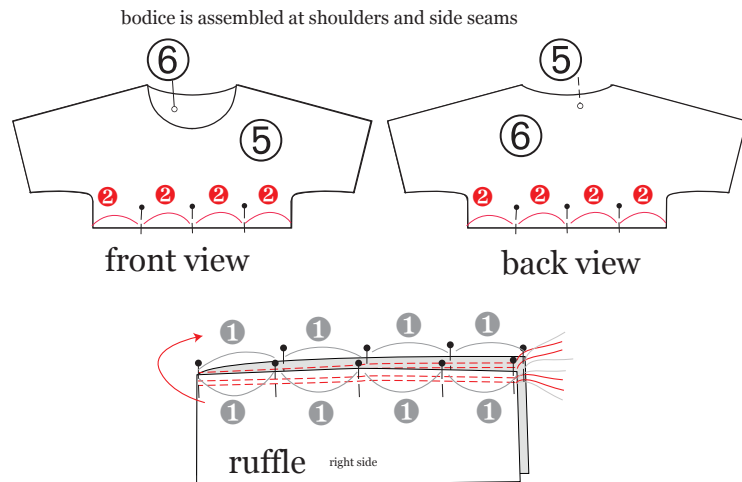
4 Lay out piece on fold of the fabric, draw outline and cut out.



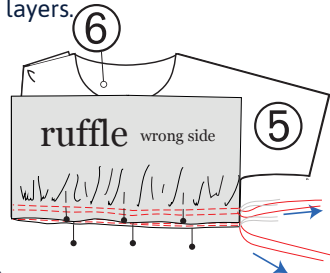
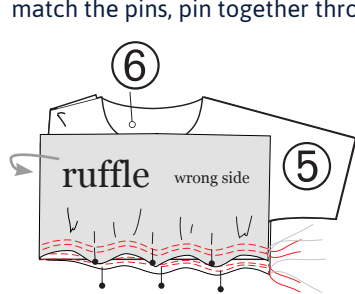
5 You get a long rectangle (twice longer as the measurements in the above chart). Sew 2 parallel rows of stitches (1/4in. = 0,7cm apart) at ruffle piece. Leave thread tails of 10cm=4in. at ends.



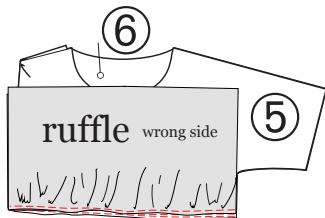
6 Divide and mark with pins the #5 front into four equal parts, then repeat at #6 (back). Divide and mark with pins the ruffle band into height equal parts.



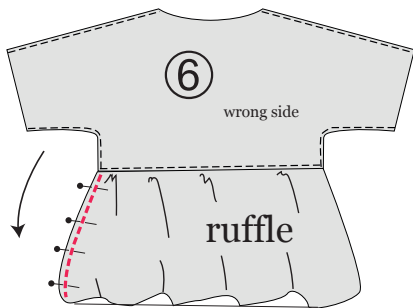
- 7** Fold ruffle band height ways. With R/R, align raw edges and match the pins, pin together through layers.



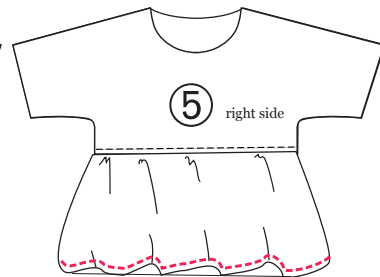
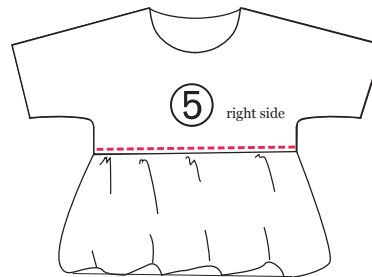
- 8** Pull up tails to gather till you achieve the required width (ruffle will be gathered to match to the bodice width). Distribute gathers. Stitch all around through layers using 0,7cm=1/4in. seam allowance and overcast raw edges together. Remove the gathering threads with a seam ripper.



- 9** Top is assembled at shoulders and side seams according to the Cordoba guidebook. Now with right sides together, align ruffle ends, pin and stitch using 0,7cm=1/4in. seam allowance. Overcast raw edges together.



- 10** Lay seam allowances on bodice wrong side, press and topstitch at edge to handle in place. Fold bottom edge twice to get a hem, press and topstitch (see Cordoba guidebook instructions).



- 11** It is almost finished! Just see the guidebook of your Cordoba sewing pattern to go ahead with other instructions. Here is a cute girly option, isn't it?



© *ikatee* est une marque déposée. Ce produit est limité à l'usage privé. Son usage à titre commercial ou industriel est interdit. La reproduction, vente ou échange, totale ou partielle en est interdite.

© *ikatee* All designs and patterns are protected. This product is for your personal use only. You are not permitted to share, resell or give this pdf file or its content, in any form to anyone else. No material may be reproduced in part or whole. Any commercial and industrial use is strictly prohibited. All rights reserved.