

**Lux
Typo.**

Gw

Fonts within the Gustan Display Suite are an extension of the original Gustan Family. They work alone, as a suite or with the original Gustan family. Gustan Densa follows as the next step in the natural weight progression of the original family with Open Type features that aid in even-colored settings as well as alternates for more dynamism. Gustan Forma has Open Type features that create a 'nesting' effect, allowing characters to scale and position to accommodate their contextual situation. Gustan Signa's end brackets coupled with regular text settings lend itself to making signs, badges and motifs the mind sets to it. Paired with the original family, the Signa fonts add another dimension of consideration to Gustan.

Weights

Gustan Densa Ultra Black

Gustan Densa Ultra Black Condensed

GUSTAN FORMĀ BOLD

GUSTAN FORMĀ MEDIUM

GUSTAN FORMĀ LIGHT

Gustan Signa Solida Bold

Gustan Signa Linea Bold

Gustan Signa Solida Medium

Gustan Signa Linea Medium

Gustan Signa Solida Light

Gustan Signa Linea Light

Language Support

Afrikaans, Albanian, Baltic languages, Basque, Bosnian, Breton, Catalan, Corsican, Croatian, Czech, Danish, Dutch, Dutch b, English UK and US, English US and modern British, Esperanto, Estonian, Faroese, Finnish, French, Galician, German, Greenlandic, Hungarian, Icelandic, Indonesian, Irish, Irish Gaelic new orthography, Irish new orthography, Irish New orthography, Italian, Kurdish Unified Alphabet, Latin basic classical orthography, Latvian, Leonese, Lithuanian, Luxembourgish basic classical orthography, Malay, Malay Rumi script, Maltese, Manx, Māori, Nordic languages, Norwegian Bokmål and Nynorsk, Occitan, Polish, Portuguese, Portuguese European and Brazilian, Rhaeto-Romanic, Romanian, Sami, Scots, Scottish Gaelic, Serbian, Serbian when in the Latin script, Slovak, Slovene, Slovenian, Sorbian Lower and Upper, Spanish, Swahili, Swedish, Tagalog, Turkish, Walloon, Welsh

Features

Ligatures, Capital Forms, Proportional Lining Figures, Slash Zero, Numerator & Denominator, Stylistic Contextual Alternates.

Formats

Standard licensing: OTF (CFF-flavored OpenType)
Web font licensing: WOFF, EOT & SVG
Dynamic embedding licensing: OTF (CFF-flavored OpenType)
Other formats available upon request.

Design

Greg Lindy

Published

2017

© 2017 Lux Typo. All rights reserved.
Lux Typo® and Gustan® are registered trademarks of Lux Typographic + Design.

Beauty of Speed

Gustan Densa Ultra Black, 55pt

CINECITTÀ ROME

Gustan Densa Ultra Black, 55pt

Super Dynamite!

Gustan Densa Ultra Black Alt, 55pt

THE BHUNDU BOYS

Gustan Densa Ultra Black Superior Caps, 55pt

Sly & the Family Stone

Gustan Densa Ultra Black Condensed, 55pt

FUTURIST MANIFESTO

Gustan Densa Ultra Black Condensed Alt, 55pt

24-Hour Party People

Gustan Densa Ultra Black Condensed Alt, 55pt

€575 LEMON GELATTO

Gustan Densa Ultra Black Condensed Superior Caps, 55pt

LA NOUVELE VAGUE

Gustan Forma Bold, 50pt

ON CAROLBY STREET

Gustan Forma Bold Alt, 50pt

A HARD DAY'S NIGHT

Gustan Forma Bold Alt, 50pt

KING'S CROSS STATION

Gustan Forma Medium, 50pt

SWINGING LONDON

Gustan Forma Medium Alt, 50pt

L'AÎNÉ DES FERCHAUX

Gustan Forma Medium Alt, 50pt

À BOUT DE SOUFFLE

Gustan Forma Light, 50pt

DIVORZIÒ ALL'ITALIANA

Gustan Forma Light Alt, 50pt

QUELLE JOIS DE VIVRE

Gustan Forma Light Alt, 50pt

$a^2 + b^2 = c^2$ \neq $x = 5 + 2y - 12$

Gustan Signa Solida Bold, 48pt

48°51'11.09"N 2°228.68'E

Gustan Signa Linea Bold, 48pt

Emergency Broadcast Network

Gustan Signa Solida Bold, 48pt

Saint-Denis → (M) (8) (9)

Gustan Signa Linea Medium, 48pt

NORTHERN LINE → Camden Town

Gustan Signa Solida Medium, 48pt

EXPRESS: 10 ITEMS OR FEWER

Gustan Signa Linea Medium, 48pt

HSO_4^- Hydrogen Sulfate

Gustan Signa Solida Light, 48pt

→ SAN FRANCISCO 356 I5/N

Gustan Signa Linea Light, 48pt

↓ NASDAQ 6,337.51 -27.02

Gustan Signa Solida Light, 48pt

SUEDEHEADS
La Dolce Vita

64/64 Gustan Densa Ultra Black

DIABOLIQUE!
Shalawambe

64/64 Gustan Densa Ultra Black Alt

SEÑOR COCONUT'S
Los Malos Músicos

64/64 Gustan Densa Ultra Black Condensed

TRES MYSTÉRIEUX
I Am Kurious Oranj

64/64 Gustan Densa Ultra Black Condensed Alt

CASINO ROYALE
PICCADILLY LINE

64/64 Gustan Forma Bold

LA JETÉE/SANS
CAMDEN TOWN

64/64 Gustan Forma Bold Alt

CHÂTEAU D'EAU
AT PÉRE LA CHAÎSÉ

64/64 Gustan Forma Medium

COOL BRITANNIA
ØSTERÅS STATION

64/64 Gustan Forma Medium Alt

KNIGHTS BRIDGE
ALESSANDRINO

64/64 Gustan Forma Light

ŚWIĘTOKRZYŻSKA
KODAŁY KÖRÖND

64/64 Gustan Forma Light Alt

U 1 Umlandstraße →

PLEASE REMAIN SEATED WITH

↗ Cockfosters 15 ≥ 3x

60/60 Gustan Signa Solida Bold

U Straßenbahn Berlin ↗

101/N ↖ 60°/40°C ●

BREAKING NEWS UPDATE!

60/60 Gustan Signa Linea Medium

52.5333°N • 13.1667°E

SYSTEM TEST PLEASE STAND BY

↘ \$59.99 ● H₂ CO₃

60/60 Gustan Signa Solida Light

↗ Terminal 2 # 5 No

H₂SO₄ π ≈ 3.1415926 *

→ DOW J 22,019.78 + 3.54

60/60 Gustan Signa Linea Bold

Connecting Lines 1 5

MLB: TIGERS 2, YANKEES 0

Flight 756: Now Boarding

60/60 Gustan Signa Solida Medium

BERLIN: POP. 3,670,622

5 A → Leytonstone 2

= \$35 + TIP 20%

60/60 Gustan Signa Linea Light

**The Factory at 33 Union Square
"TELEPHONE THING" BY THE FALL
Soul City Records, Covent Garden
CURTIS MAYFIELD'S "SUPER FLY"**

30/34 Gustan Densa Ultra Black

**Northern Soul All-Night Dance
MODERN LIFE IS RUBBISH (1993)
The trademark "Motown Sound"
WE'RE ALWAYS KEEPIN' THE FAITH**

30/34 Gustan Densa Ultra Black Alt

**The Blackpool Mecca & the Wigan Casino
CATACOMBS, A CLUB IN WOLVERHAMPTON
London's "Scene that Celebrates Itself"
THE TWISTED WHEEL WAS THE 1ST VENUE**

30/34 Gustan Densa Ultra Black Condensed

**"Quadrophenia" is the story of a Mod who
AMAYENGE'S 1989 ALBUM, "ZAMBIANCE"
Indie record labels, Rough Trade & Factory
STARRING SEAN CONNERY AS JAMES BOND**

30/34 Gustan Densa Ultra Black Condensed Alt

«HIROSHIMA MON AMOUR» EST
WITTEBERG PLATZ CONNECTES TO
LAMBETH NORTH TO WATERLOO
DAVID HEMMINGS IN "BLOW UP"

35/42 Gustan Forma Bold/Bold Alt

«LE BEAU SERGE» EST CONSIDÉRÉ
"THE KNACK... & HOW TO GET IT"
CHAMPS ÉLYSÉES CLEMENCEAU
«L'ANNÉE DERNIÈRE A MARIENBAD»

35/42 Gustan Forma Medium/Medium Alt

CHÂTELET TO PORTE D'ORLÉANS
ZOOLOGISCHER GARTEN STATION
EUROPEAN ART CINEMA GAINED
L'ÉTONNANT SERGE GAINSBOURG

35/42 Gustan Forma Light/Light Alt

Nollendorfpplatz → Connections:

2

3

4

Forecast:

High: 100°F

Low: 90°F

Potsdamer Platz →

← Alexanderplatz

LEICESTER CITY vs AFC BOURNEMOUTH: 1,1

38/45 Gustan Signa Solida Bold/Linea Bold

T14: Hägerstensåsen

12:35

12:55

1:05

Polyatomic Cations

NH₄+

H₃O+

Hg₂²⁺

GLOBAL MARKETS: Stocks slip as Wall St. eases

Solve:

$x^5 + 2y = 3x - 17$

6

≥

3

x

+

1

38/45 Gustan Signa Solida Medium/Linea Medium

NFL: AARON RODGERS WANTS TO BE A PACKER AT 40

Quadratic Formula

$x = \frac{-b \pm \sqrt{b^2 - 4ac}}{2a}$

SALE!

All Shirts: \$15.99

+

Extra 50%

Latitude: 51.508°N

Longitude: 0.12475°W

38/45 Gustan Signa Solida Light/Linea Light

THE STONE ROSES AT SPIKE ISLAND IN 1990
Reading Festival 1990: The Fall, Pixies, Ride
WITH SESSIONS FROM HALF MAN HALF BISCUIT
THE HACIENDA: 11-13 WHITWORTH ST WEST
BBC Radio DJ John Peel was responsible for

21/26 Gustan Densa Ultra Black

THE ZIMBABWE KINGS OF CHA-CHA PLAY AT
Madchester grew from the rave-influenced
1989 WAS "THE SECOND SUMMER OF LOVE"
BY 1991, SHOEGAZE DOMINATED THE MUSIC
"The Sunshine Bores the Daylights out of Me"

21/26 Gustan Densa Ultra Black Alt

THE CHARLATANS, INSPIRAL CARPETS, 808 STATE, JAMES
In Manchester, hip-hop acts like the Ruthless Rap Assassins
"COMMON PEOPLE" BY PULP, "ANIMAL NITRATE" BY SUEDE
"HOW DARE YOU ASSUME I WANNA PARLEZ VOUS WITH YOU!"
At the 1996 BRIT Awards, Jarvis Cocker invaded the stage in

21/26 Gustan Densa Ultra Black Condensed

A HAPPY MONDAYS 45 FEATURING THE TRACK "STEP ON"
"Baggy" was a mix of funk, psychedelia, house, and guitar
THE CAMDEN ELECTRIC BALLROOM, SYNDROME OXFORD ST
BRITPOP BEGAN WITH BLUR'S 1992 SINGLE, "POPSCENE"
Oasis' back-to-back shows at Knebworth in August, 1996

21/26 Gustan Densa Ultra Black Condensed Alt

THE FRENCH NEW WAVE FILMMAKERS CONSCIOUSLY
THIS GROUP HAD A SPIRIT OF YOUTHFUL ICONOCASM
STARRING JEAN-PAUL BELMONDO & ANNA KARINA
«UNE CERTAINE TENDANCE DU CINÉMA FRANÇAIS»
"LE MONDE DU SILENCE" WON THE PALM D'OR AT
CANNES DU CINÉMA WRITERS CRITIQUED THE CLASSIC

35/42 Gustan Forma Bold/Bold Alt

FRANÇOIS TRUFFAUT, WITH "THE 400 BLOWS" (1959) &
BUÑUEL'S "THE DISCREET CHARM OF THE BOURGEOISIE"
CLASSIC FRENCH CINEMA ADHERED TO THE PRINCIPLES
THE AUTEURS OF THIS ERA OWED THE POPULARITY THEY WERE
AN AUTHOR WHO SHOWS THROUGH FILM HIS OWN EYE
MICHAEL CAINE & MINA CROPERS STAR IN "THE ITALIAN JOB"

35/42 Gustan Forma Medium/Medium Alt

«LES PARAPLUIES DE CHERBOURG» DE JACQUES DEMY
THE LEFT BANK DIRECTORS TENDED TO SEE CINEMA
WITH A FONDNESS FOR A KIND OF BOHEMIAN LIFE AND
THE NOUVEAU ROMAN MOVEMENT IN LITERATURE
«JOUR DU FÊTE», ONE OF JACQUES TATI'S EARLIEST FILMS
RICHARD ROUD AND JEAN-PIERRE MELVILLE WERE

35/42 Gustan Forma Light/Light Alt

ABUSE OF POWER COMES AS NO SURPRISE • PROTECT ME FROM WHAT I WANT

LAX → SFO 500 FLIGHTS PER DAY

№ 10 DOWNING STREET, LONDON

North Circular Road →

A 4 0 6

M1 London → Manchester

DOW J 21,618.46 ↑ 43.73

AAPL 151.24 ↑ 1.15

SBUX 57.92 ↓ 0.29

Atlanta Braves Break LA Dodgers' 9-Game Winning Streak → 5,3

Area of a Circle

$A = \pi r^2$

Circumference of a Circle

$C = \pi \times d = 2\pi \times r$

25/30 Gustan Signa Solida Bold/Linea Bold

ANIONS FROM ORGANIC ACIDS



ACETATE



FORMATE

US STOCKS: DOW HITS RECORD HIGH AS AMAZON, APPLE PULL DOWN S&P 500

Today's Forecast:

Santa Monica

High 75°F

Low 66°F

SUNNY

• CALIFORNIA TODAY: What Would A Very L.A. Olympics Look Like? •

Typographic Units

12 points

1 pica



72 points

6 picas

1 inch

WEIGHT CONVERSION

STONE → LB → KG

1 STONE

=

14 LB

=

6.35029KG

25/30 Gustan Signa Solida Medium/Linea Medium

SINE:

OPPOSITE ÷ HYPOTENUSE

COSINE:

ADJACENT ÷ HYPOTENUSE

Norman Lear, LL Cool J, & Gloria Estefan, among 2017 Kennedy Center

1 Pint

32 Tbsp

16 Pony

8 Jack

4 Gill

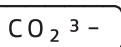
2 Cup

1/2 Quart

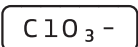
Arsenal/Everton: 3,1 Chelsea/Sunderland: 5,1 Watford/Manchester City: 0,5

OXOANIONS

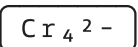
CARBONATE



CHLORATE



CHROMATE



London → Coventry

M1 • J2 → J17 • M45

123.3 km

52.32464°N 1.14069°W

25/30 Gustan Signa Solida Light/Linea Light

**ABCDEFGHIJKLM
NOPQRSTUVWXYZ
abcdefghijklmno
pqrstuvwxyz
0123456789.,!?
[]{}()@€\$¢£%#&**

Gustan Densa Ultra Black

**ABCDEFGHIJKLMNO
PQRSTUVWXYZ
0123456789
€\$¢£& AMNWY
AMNWY
defktwy**

Gustan Densa Ultra Black Alt

**ABCDEFGHIJKLM
NOPQRSTUVWXYZ
abcdefghijklmno
pqrstuvwxyz
0123456789.,!?
[]{}()@€\$ç£%#&**

Gustan Densa Ultra Black Condensed

**ABCDEFGHIJKLMNO
PQRSTUVWXYZ
0123456789
€\$ç£& Amnwy
Amnwy
aefktwy**

Gustan Densa Ultra Black Condensed Alt

ABCDEFGHIJKLM
NOPQRSTUVWXYZ
ABCDEFGHIJKLMNO
PQRSTUVWXYZ
0123456789.,!?
@€\$ç£%#&

Gustan Forma Medium

ABCDEFGHIJKLMNO
PQRSTUVWXYZ
0123456789 €\$ç£
AEIOUY AY AEIOUY AY
AMNWY
AMNWY AMNWY

Gustan Forma Medium Alt

ABCDEFGHIJKLM
 NOPQRSTUVWXYZ
 ABCDEFGHIJKLMNO
 PQRSTUVWXYZ
 0123456789.,!?
 @€\$ç£%#&

Gustan Forma Light

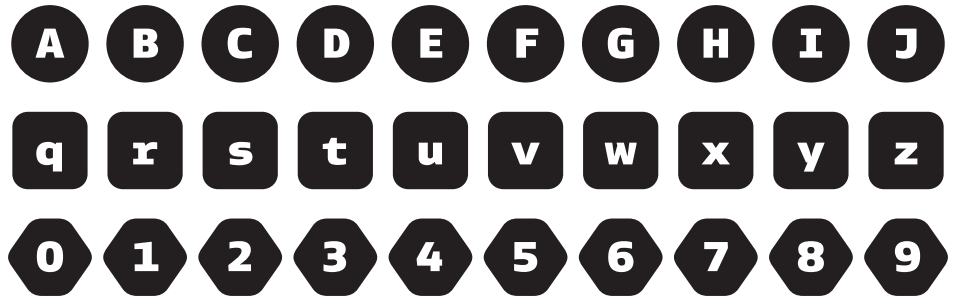
ABCDEFGHIJKLMNO
 PQRSTUVWXYZ
 0123456789 €\$ç£
 AEIOUY AY ÄËÏÖÜY ÄÛ
 AMNWY
 AMNWY ÄMÑWÛ

Gustan Forma Light Alt

ABCDEFGHIJKLMNOPQRSTUVWXYZ

abcdefghijklmnopqrstuvwxyz

0123456789, !? @ €\$¢£% # & / ' "

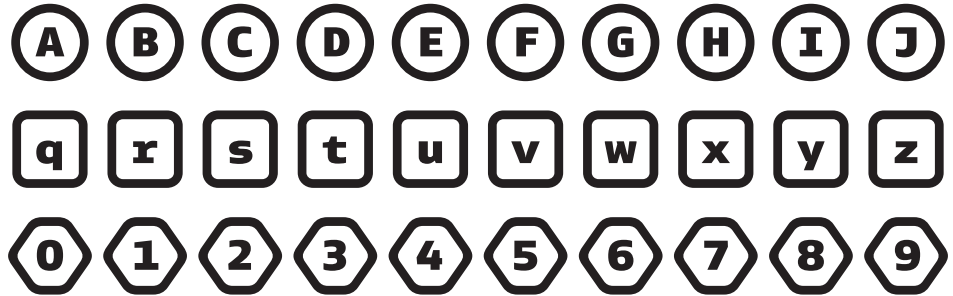


Gustan Signa Solida Bold

ABCDEFGHIJKLMNOPQRSTUVWXYZ

abcdefghijklmnopqrstuvwxyz

0123456789, !? @ €\$¢£% # & / ' "

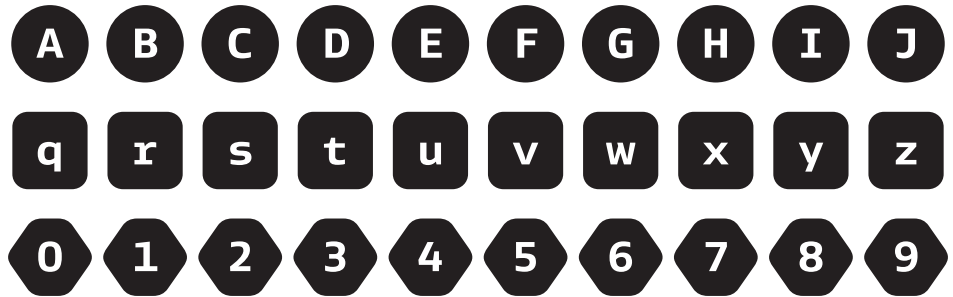


Gustan Signa Linea Bold

ABCDEFGHIJKLMNOPQRSTUVWXYZ

abcdefghijklmnopqrstuvwxyz

0123456789 , ! ? @ € \$ ¢ £ % # & / ' "

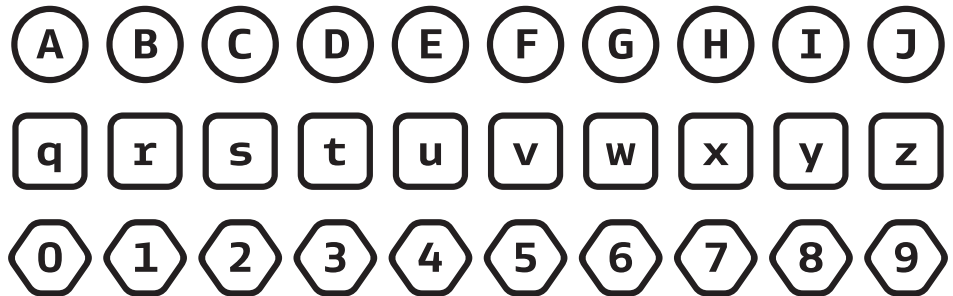
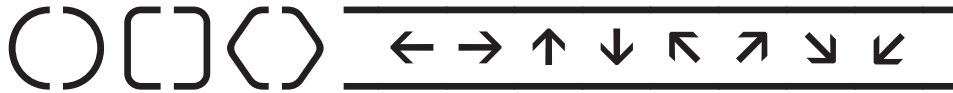


Gustan Signa Solida Medium

ABCDEFGHIJKLMNOPQRSTUVWXYZ

abcdefghijklmnopqrstuvwxyz

0123456789 , ! ? @ € \$ ¢ £ % # & / ' "



Gustan Signa Linea Medium

ABCDEFGHIJKLMNOPQRSTUVWXYZ

abcdefghijklmnopqrstuvwxyz

0123456789, !? @ € \$ ¢ £ % # & / ' "

◐ ◑ ◒ ◓ ◔ ◕ ◖ ◗ ◘ ◙ ◚ ◛ ◜ ◝ ◞ ◟ ◠ ◡ ◢ ◣ ◤ ◥ ◦ ◧ ◨ ◩ ◪ ◫ ◬ ◭ ◮ ◯ ◰ ◱ ◲ ◳ ◴ ◵ ◶ ◷ ◸ ◹ ◺ ◻ ◼ ◽ ◾ ◿ ◰ ◱ ◲ ◳ ◴ ◵ ◶ ◷ ◸ ◹ ◺ ◻ ◼ ◽ ◾ ◿

A B C D E F G H I J

q r s t u v w x y z

0 1 2 3 4 5 6 7 8 9

Gustan Signa Solida Light

ABCDEFGHIJKLMNOPQRSTUVWXYZ

abcdefghijklmnopqrstuvwxyz

0123456789, !? @ € \$ ¢ £ % # & / ' "

◯ ◻ ◽ ◾ ◿ ◰ ◱ ◲ ◳ ◴ ◵ ◶ ◷ ◸ ◹ ◺ ◻ ◼ ◽ ◾ ◿ ◰ ◱ ◲ ◳ ◴ ◵ ◶ ◷ ◸ ◹ ◺ ◻ ◼ ◽ ◾ ◿

A B C D E F G H I J

q r s t u v w x y z

0 1 2 3 4 5 6 7 8 9

Gustan Signa Linea Light

Deactivated

.....
All Caps

Metro Card: \$3.99

.....
Titling Alternates

**WEMBLEY CENTRAL
Tufnell Park
District Railway**

.....
Style Set: Alternate Currency & Numerals

\$21,543.98

.....
Style Set: Alternate Underscored (Lowercase) Glyphs

La Brea Tar Pits

.....
Contextual Alternates

**CYCLE
CAMDEN
FANTASY
Forge
GYMNASIC
LANDFILL
STUDENT
Pandora
Aqueduct
American
hexagon
forgetful
flounder
system
tattered**

Activated

.....
All Caps

METRO CARD: \$3.99

.....
Titling Alternates

**WEMBLEY CENTRAL
Tufnell Park
District Railway**

.....
Style Set: Alternate Currency & Numerals

£21,543.98

.....
Style Set: Alternate Underscored (Lowercase) Glyphs

LA BREA TAR PITS

.....
Contextual Alternates

**CYCLE
CAMDEN
FANTASY
Forge
GYMNASIC
LANDFILL
STUDENT
Pandora
Aqueduct
American
hexagon
forgetful
flounder
system
tattered**

Gustan Display Suite

Deactivated

.....
All Caps

METRO CARDS: \$3.99

.....
Contextual Alternates

WEMBLY CENTRAL

.....
Titling Alternates

WEMBLY CENTRAL

.....
Style Set

WEMBLY CENTRAL
WEMBLY CENTRAL

Activated

.....
All Caps

METRO CARD: \$3.99

.....
Contextual Alternates

WEMBLY CENTRAL

.....
Titling Alternates

WEMBLY CENTRAL

.....
Style Set

WEMBLY CENTRAL
WEMBLY CENTRAL

Gustan Display Suite

Deactivated

.....
All Caps

Metro Cards: \$3.99

.....
Fractions

3/4 and 1 1/2 567/3435

.....
Numerator/Denominator

H0123456789

.....
Contextual Alternates

(+ A +)

(+ ABC +)

(+ ABC +) [+ DEF +]

Activated

.....
All Caps

METRO CARDS: \$3.99

.....
Fractions

3/4 and 1 1/2 567/3435

.....
Numerator/Denominator

H0123456789 H0₁23456789

.....
Contextual Alternates

Ⓐ

ⒶBC

ⒶBC DEF