



Sustainable
Cleaning
Solutions



odellcorp.com

At the O'Dell Corporation, we strive to be environmental stewards. Sustainability, conservation and preservation have been our normal practice for many years.

Sustainability

Sustainable products are those products that provide environmental, social and economic benefits while protecting public health and environment over their whole life cycle, from the extraction of raw materials until the final disposal.

All ten of our EchoMop Series products have achieved the prestigious **UL Environmental Claims Validation (ECV) Badge**.

From small businesses to large corporations, our EchoMops offer unmatched durability and efficiency. The ECV badge signifies our commitment to upholding rigorous environmental standards.



This emblem indicates a UL validated product from O'Dell.



Visit this link to learn more:

www.ul.com/services/ul-2809-recycled-content-validation



THE O'DELL CORPORATION

CONTENTS

Wet Mops 1

Cleaning Accessories 11

Dust Mops 13

Brooms & Brushes 17

Dusters, Washers, 26
and Applicators

Microfiber 28

Handles, Squeegees, 42
and Floor Care Accessories

Options 44



Denotes the EchoLine by O'Dell. Industrial floor care for the environmentally conscious company.



Denotes color flag product.



High quality, recycled plastic that has been collected from coastal areas at risk of ocean plastic pollution.

Conservation

Our conservation initiatives seek the proper use of nature. Several projects have been implemented that have helped to protect the natural world.

- In 1995, O'Dell established a 1000 acre tree farm certified under Mead Westvaco's CFM program and the Sustainable Forestry Initiative Program.
- Our tree farm removes 3,600 tons of CO2 and produces 4,000 tons of oxygen annually, enough for 16,200 people.
- In support of the South Carolina Waterfowl association, in the midst of new pines and hardwoods, O'Dell created wetlands to provide a safe and healthy growth environment for both resident and migratory waterfowl and numerous other species.
- This initiative produced thousands of waterfowl hatches and provided habitat for numerous other species of wildlife.
- In addition, we created miles of hiking trails and campsites and sponsor education programs to nurture youth awareness of our environmental responsibilities.

Preservation

Our preservation initiatives seek to protect nature from abuse. O'Dell was one of the first manufacturing facilities in the industry to recognize the need and implement programs to protect surrounding nature.

- First South Carolina manufacturer to use 100% green power and be registered as a "Green Power Partner" by LEC and by the EPA.
- First company in our industry to be certified as a Carbon Neutral manufacturer by the Cleaning Industry Climate Initiative (CICI), and Leonardo Academy's Cleaner and Greener Program.



O'Dell's Looped E Pond

As more forward thinking advancements which address environmental concerns are presented, O'Dell plans to take full advantage of new, sustainable opportunities.



Certified Carbon Neutral Factory



100% Green Powered Facility

Wet Mops

Choosing the proper model

Make the right choice of mop based on your specific job requirement.



Headband

Widebands – may be laundered many times, and used with all handle styles. Standard widebands are made of 5" vinyl coated nylon mesh, for strength and to facilitate speedy drying.

Narrowbands – constructed of 1 ¼" polyester tape, they are usually placed on the economical, cut end mopheads. Woven poly headbands are also available in 7, 8, and 9" widths.

Yarn

Choose Cotton, Rayon, Synthetic, Blended yarn, Microfiber and Microfiber/Synthetic blends, depending on the application (see below).

Tailband

Tailbands prevent tangling, and extend a mop's functional life. They provide wider floor coverage per pass and less streaking, which equals faster mopping and reduced labor.

Ends

Looped Ends are more durable and launderable. Cut End mops are lower cost, disposable.

| | Blended* | Cotton | Rayon | Knitted Woven Cotton | Microfiber | Hybrid** | Finish |
|-----------------------|---|---|--|--|---|--|--|
| Industry Applications | | | | | | | |
| | General Maintenance, Health Care | Industrial, Institutional, & Commercial | Industrial, Institutional, & Commercial | Food Service & Clean room | Health Care | General Maintenance | Liquid Applications |
| Uses | General cleaning and disinfecting, Application of chemicals. | Quick spill pick-up, General cleaning | General cleaning and disinfecting, Application of chemicals. | Great for mopping anti-skid floors | Healthcare color coding to prevent cross contamination, Floor finish application | Healthcare, quick spill pick-up, commercial laundries | Finishing - Great for dispensing chemicals and waxes. |
| Pros | Highly absorbent, Limited break-in required, Great for laundering, Yarn color choices, Fiber picks up 6-7 times its weight, Durable staple fibers | Highly absorbent, Economical, Good liquid retention | Highly absorbent, Little break-in required, Good release of liquids, Picks up 3-4 times its weight, Mildew resistant, Less linting | Highly absorbent, High tensile strength, Does not lint | Inherent ability to clean without chemicals, Great launderability (200-500 times), Lightweight, Lint-free, holds 7 times its weight in liquid, Releases liquid well | Traditional construction (no need to buy new hardware or handles), Integrated Microfiber picks up more dirt and germs than regular mops, Stronger, longer lasting fibers, Great launderability, Increased absorption and release | Highly absorbent, Little break-in required, Good release of liquids, Picks up 3-4 times weight, Mildew resistant, Less linting |
| Cons | May shrink when laundered, Higher unit cost | Needs break-in period, Lengthy drying time, Might mildew or degrade | Shrinks when laundered, Little liquid retention | Cut end mops are not launderable | Higher unit cost | Higher unit cost | Shrinks when laundered, Little liquid retention |

*Rayon/Cotton/Polyester, Rayon/Polyester

**Synthetic fiber integrated with microfiber



Preshrunk Synthetics

These mopheads are manufactured from yarns created especially for O'Dell. Ideal for use in health care industry, and for other users who launder mops. Prelaundered and preshrunk. In either 4 ply or 6 ply yarns with 5" vinyl mesh headband.



900 Series



4 ply preshrunk. Cotton, rayon, synthetic blend of fibers for maximum durability. Absorbs up to seven times its own weight!



5500 Series



4 ply preshrunk, premium quality, synthetic mophead for healthcare applications. Prelaundered with limited break in.



Blended



400 Series



4 ply all purpose. Premium, open end spun cotton/rayon/synthetic yarn strength and durability. Available in all colors. Launderable.



4000 Series



4 ply all purpose cotton synthetic blend loop mop. This fiber blend offer quality yarn at a modest price. Available in all colors. Launder with care



Healthcare

Healthcare synthetics contain the same superior quality yarns as our preshrunk mopheads. This ensures both durability and absorbency. 4 ply blended yarn combines the strengths of rayon, acrylic and polyester-tensile strength, absorption and rapid fluid release. The yarn dries quickly which reduces odor and bacterial growth.



5000 Series



4 ply, premium quality, synthetic blend mophead for healthcare applications. Launderable.



| ITEM NO. | | | | | SIZE | HEADBAND | CASE PACK | CASE CUBE | WEIGHT LBS | STANDARD YARN COLOR |
|----------|--------|-------|--------|--------|-------------|----------------|-----------|-----------|------------|---|
| 900S | 5500S | 400S | 4000S | 5000S | Small | Yellow 5" mesh | 12 | 0.98 | 10.0 | <p>yellow blue orange green red white <i>Unless otherwise noted</i></p> |
| 900M | 5500M | 400M | 4000M | 5000M | Medium | Green 5" mesh | 12 | 1.45 | 13.5 | |
| 900L | 5500L | 400L | 4000L | 5000L | Large | Red 5" mesh | 12 | 1.67 | 18.0 | |
| 900XL | 5500XL | 400XL | 4000XL | 5000XL | Extra large | Blue 5" mesh | 12 | 2.22 | 22.5 | |

Add the desired color to end of item number: Ex: 5500L/Blue

EchoMop



1200 Series

These mops are produced using high quality P.E.T fibers from recycled bottles. Absorbs over 4.4 times its weight in water. Releases almost 30% upon wringing. Over 20% better performance than competitive all-synthetic wet mop yarns. Dries fast. Much longer lasting and lower linting than competitive yarns. Composed of 30% post consumer material and 67% post industrial material. Free from post recycling dyes.

| ITEM NO. | SIZE | CASE PACK | CASE CUBE | WEIGHT LBS |
|----------|-------------|-----------|-----------|------------|
| 1200S | Small | 12 | 0.98 | 10 |
| 1200M | Medium | 12 | 1.45 | 13.5 |
| 1200L | Large | 12 | 1.67 | 18 |
| 1200XL | Extra Large | 12 | 2.22 | 22.5 |

Available Colors



Water Bottle Blue



Soda Bottle Green



Made of Earthspun® yarn for eco-friendly cleaning

Yarn colors are derived from original dyes of recycled P.E.T. plastic

Yarn color example: 1200L/Blue

Cotton

100 Series

4 ply looped-end mophead. High quality at a modest price. Good for heavy cleaning. Tighter twist yarns for strength and longer life. Natural color cotton.

500 Series

An economical 4 ply cotton looped-end mophead. The perfect choice when switching from cut-end to looped end. Out performs cut-end mops for general purpose cleaning. Available in natural color cotton.

| ITEM NO. | SIZE | HEADBAND | CASE PACK | CASE CUBE | WEIGHT LBS | |
|----------|-------|-------------|----------------|-----------|------------|------|
| 100S | 500S | Small | Yellow 5" mesh | 12 | 0.98 | 10 |
| 100M | 500M | Medium | Green 5" mesh | 12 | 1.45 | 13.5 |
| 100L | 500L | Large | Red 5" mesh | 12 | 1.67 | 18 |
| 100XL | 500XL | Extra Large | Blue 5" mesh | 12 | 2.22 | 22.5 |

Not pre-shrunk. Launder with care.



Rayon

200 Series

4 ply rayon looped-end mophead suitable for heavy cleaning and finish work. Needs no break in. Can absorb 4 times its own weight. Available in natural white only.

| ITEM NO. | SIZE | HEADBAND | CASE PACK | CASE CUBE | WEIGHT LBS |
|----------|-------------|----------------|-----------|-----------|------------|
| 200S | Small | Yellow 5" mesh | 12 | 0.98 | 10 |
| 200M | Medium | Green 5" mesh | 12 | 1.45 | 13.5 |
| 200L | Large | Red 5" mesh | 12 | 1.67 | 18 |
| 200XL | Extra Large | Blue 5" mesh | 12 | 2.22 | 22.5 |

Not pre-shrunk. Launder with care.





Knitted and Non-woven



Knitty Gritty for Food Service

This poly cotton blended knit mop was designed to meet the tough, demanding needs of the industrial service industries. This innovative mophead will stand up well to rough, abrasive anti skid floors. The finest quality blended cotton and polyester fibers are knitted tightly to create a longer lasting, lower linting product with enhanced water holding ability for greater coverage of large floor surface areas. The Knitty Gritty mophead has become widely accepted in food service companies throughout the United States.

| ITEM NO. | SIZE | HEADBAND | CASE PACK | CASE CUBE | WEIGHT LBS |
|-----------|------|--------------------|-----------|-----------|------------|
| KG102TB | Med. | 1¼" polyester tape | 12 | 1.59 | 13.5 |
| KG102TBWB | Med. | Green 5" mesh | 12 | 1.59 | 13.5 |

Enviro Clean for Clean Room

This nonwoven material is designed to meet the various levels of cleanroom (Class 1000) applications for lint reduction. It is also ideal for food service environments requiring mildew proof cleaning products. Also hospitals controlling infectious disease, oil and hazardous chemical spills.

The unique synthetic web strand construction combines the strength and wearability of non-woven polyester and nylon fibers. Liquid and particulate pickup and retention are enhanced by the nonwoven orientation of the fibers. Linting and shredding are virtually nonexistent. These unique fibers are mildew resistant and fast drying. Available in both cut-end and looped-end.



| LOOPED END | CUT END | SIZE | HEADBAND | CASE PACK | CASE CUBE | WEIGHT LBS |
|------------|---------|-------|--------------------|-----------|-----------|------------|
| EC910L | EC310 | Med. | 1¼" polyester tape | 12 | 1.09 | 8 |
| EC911L | EC314 | Large | 1¼" polyester tape | 12 | 1.59 | 11 |
| EC912L | EC316 | XL | 1¼" polyester tape | 12 | 1.85 | 12 |
| EC910LWB | EC310WB | Med. | Green 5" mesh | 12 | 1.09 | 8 |
| EC911LWB | EC314WB | Large | Red 5" mesh | 12 | 1.59 | 11 |
| EC912LWB | EC316WB | XL | Blue 5" mesh | 12 | 1.85 | 12 |

New Edge Nonwoven Wet Mop

Produced from 100% post industrial material - the new Edge Mop is made from recycled rayon / synthetic nonwoven edge trim. Compared to cotton, this material exhibits 70% greater absorption and 68% greater liquid release, giving the same cleaning results with less yarn fiber. The Edge mop is more economical than cotton, will not unravel, leaves less lint, and requires no break-in time. The Edge mop is ideal for wax stripping, disinfecting, quick spill pick-up, and general purpose cleaning.

- › 70% greater absorption than cotton
- › 68% greater liquid release
- › More economical than cotton
- › Reduced linting
- › Immediate absorption
- › 100% post - industrial nonwoven edge trim
- › Made in the USA



Looped end



Cut end

Cut end

| ITEM NO. | SIZE | CASE PACK | CASE CUBE | WEIGHT LBS |
|----------|------|-----------|-----------|------------|
| BW612 | #12 | 12 | 1.09 | 5 |
| BW714 | #14 | 12 | 1.09 | 5.75 |
| BW816 | #16 | 12 | 1.59 | 6.5 |
| BW918 | #18 | 12 | 1.59 | 7.25 |
| BW1020 | #20 | 12 | 1.59 | 8 |
| BW1224 | #24 | 12 | 1.59 | 9.5 |
| BW1632 | #32 | 12 | 2.37 | 12.5 |

Looped end

| ITEM NO. | SIZE | CASE PACK | CASE CUBE | WEIGHT LBS |
|----------|----------------------------|-----------|-----------|------------|
| BW306 | Small, 12 oz. equivalent | 12 | 1.09 | 5 |
| BW308 | Medium, 16 oz. equivalent | 12 | 1.59 | 6.5 |
| BW312 | Large, 24 oz. equivalent | 12 | 1.59 | 9.5 |
| BW316 | X-Large, 32 oz. equivalent | 12 | 2.37 | 12.5 |



Cotton mop on non-skid floor

vs.

Edge mop on non-skid floor

COTTON & RAYON FULL WEIGHT

Cotton

Our most economical line of mopheads. Suitable for a wide range of cleaning jobs. Available in both 4 ply and 8 ply cotton with either narrow bands or wide bands. Cotton mopheads require break-in time to remove natural oils from the fibers.

Economy 8-ply - 8 ply yarns provide good absorption for general use mopping.

| 1.25" POLY TAPE HEADBAND | 5" MESH HANDBAND | SIZE | CASE PACK | CASE CUBE | WEIGHT LBS |
|--------------------------|------------------|--------|-----------|-----------|------------|
| 838F | 838FWB | 8 oz. | 12 | 0.76 | 6 |
| 8310F | 8310FWB | 10 oz. | 12 | 0.76 | 7 |
| 8312F | 8312FWB | 12 oz. | 12 | 1.09 | 9 |
| 8316F | 8316FWB | 16 oz. | 12 | 1.59 | 12 |
| 8320F | 8320FWB | 20 oz. | 12 | 1.59 | 15 |
| 8324F | 8324FWB | 24 oz. | 12 | 1.59 | 18 |
| 8332F | 8332FWB | 32 oz. | 12 | 2.37 | 24 |

Economy 4-ply - A great value at a modest price. A very popular cotton cut end product.

| 1.25" POLY TAPE HEADBAND | 5" MESH HANDBAND | SIZE | CASE PACK | CASE CUBE | WEIGHT LBS |
|--------------------------|------------------|--------|-----------|-----------|------------|
| 538F | 538FWB | 8 oz. | 12 | 0.76 | 6 |
| 5310F | 5310FWB | 10 oz. | 12 | 0.76 | 7 |
| 5312F | 5312FWB | 12 oz. | 12 | 1.09 | 9 |
| 5316F | 5316FWB | 16 oz. | 12 | 1.59 | 12 |
| 5320F | 5320FWB | 20 oz. | 12 | 1.59 | 15 |
| 5324F | 5324FWB | 24 oz. | 12 | 1.59 | 18 |
| 5332F | 5332FWB | 32 oz. | 12 | 2.37 | 24 |



Rayon

Rayon provides immediate absorbency and extra wear. Low linting and needs no break in time. Ideal for general cleaning and disinfecting.

Economy 4-ply - A great value rayon mophead at a modest price.

| 1.25" POLY TAPE HEADBAND | 5" MESH HANDBAND | SIZE | CASE PACK | CASE CUBE | WEIGHT LBS |
|--------------------------|------------------|--------|-----------|-----------|------------|
| 2110F | 2110FWB | 10 oz. | 12 | 0.76 | 7 |
| 2112F | 2112FWB | 12 oz. | 12 | 0.76 | 9 |
| 2116F | 2116FWB | 16 oz. | 12 | 1.09 | 12 |
| 2120F | 2120FWB | 20 oz. | 12 | 1.59 | 15 |
| 2124F | 2124FWB | 24 oz. | 12 | 1.59 | 18 |
| 2132F | 2132FWB | 32 oz. | 12 | 1.85 | 24 |

Premium 4-ply - The industry standard for rayon cut end mop heads.

| 1.25" POLY TAPE HEADBAND | 5" MESH HANDBAND | SIZE | CASE PACK | CASE CUBE | WEIGHT LBS |
|--------------------------|------------------|--------|-----------|-----------|------------|
| 238F | 238FWB | 8 oz. | 12 | 0.76 | 6 |
| 2310F | 2310FWB | 10 oz. | 12 | 0.76 | 7 |
| 2312F | 2312FWB | 12 oz. | 12 | 0.76 | 9 |
| 2316F | 2316FWB | 16 oz. | 12 | 1.09 | 12 |
| 2320F | 2320FWB | 20 oz. | 12 | 1.59 | 15 |
| 2324F | 2324FWB | 24 oz. | 12 | 1.59 | 18 |
| 2332F | 2332FWB | 32 oz. | 12 | 1.85 | 24 |

Best 8-ply - A luxuriously thick, thirsty rayon mophead that will withstand rough use.

| 1.25" POLY TAPE HEADBAND | 5" MESH HANDBAND | SIZE | CASE PACK | CASE CUBE | WEIGHT LBS |
|--------------------------|------------------|--------|-----------|-----------|------------|
| 288F | 288FWB | 8 oz. | 12 | 0.76 | 6 |
| 2810F | 2810FWB | 10 oz. | 12 | 0.76 | 7 |
| 2812F | 2812FWB | 12 oz. | 12 | 0.76 | 9 |
| 2816F | 2816FWB | 16 oz. | 12 | 1.09 | 12 |
| 2820F | 2820FWB | 20 oz. | 12 | 1.59 | 15 |
| 2824F | 2824FWB | 24 oz. | 12 | 1.59 | 18 |
| 2832F | 2832FWB | 32 oz. | 12 | 1.85 | 24 |



Rayon and Cotton Numbered

Standard numbered mopheads are lighter than full weight mopheads.

Rayon 4-ply Rayon provides immediate absorbency and extra wear. Low linting and needs no break in. Ideal for general cleaning and disinfecting.

Cotton 4-ply A great value and high quality at a modest price. 4 ply cut end cotton mophead. Good for heavy cleaning. Tighter twist yarns for strength and longer life.

| RAYON 4-PLY | COTTON 4-PLY | SIZE | CASE PACK | CASE CUBE | WEIGHT LBS |
|-------------|--------------|------|-----------|-----------|------------|
| 2312 | 5312 | #12 | 12 | 0.76 | 9 |
| 2316 | 5316 | #16 | 12 | 1.09 | 10 |
| 2320 | 5320 | #20 | 12 | 1.59 | 12 |
| 2324 | 5324 | #24 | 12 | 1.59 | 16 |
| 2332 | 5332 | #32 | 12 | 1.59 | 18 |

Deck Mop

The "Old Standby" traditional deck mops with permanent handles. These deck mops will stand up to very rough use. Available in 2 yarn variations.

Cotton Deck Mop

| ITEM NO. | SIZE | DIAMETER | HANDLE | CASE PACK | CASE CUBE | WEIGHT LBS |
|----------|------|----------|--------|-----------|-----------|------------|
| 5716 | 16 | 7/8" | 48" | 6 | 0.85 | 9 |
| 5720 | 20 | 1 1/8" | 54" | 6 | 1.15 | 12 |
| 5724 | 24 | 1 1/8" | 54" | 6 | 1.68 | 15 |
| 5732 | 32 | 1 1/8" | 54" | 6 | 2.88 | 17 |

Rayon Deck Mop

| ITEM NO. | SIZE | DIAMETER | HANDLE | CASE PACK | CASE CUBE | WEIGHT LBS |
|----------|------|----------|--------|-----------|-----------|------------|
| 2716 | 16 | 7/8" | 48" | 6 | 0.85 | 9 |
| 2720 | 20 | 1 1/8" | 54" | 6 | 1.15 | 12 |
| 2724 | 24 | 1 1/8" | 54" | 6 | 1.68 | 15 |
| 2732 | 32 | 1 1/8" | 54" | 6 | 2.88 | 17 |



Hygrade Rayon

700 Series Hygrade 4 ply rayon yarn with blue stripes to designate mophead is for finish applications. Rayon absorbs moisture well, has good release, and is ideal as a finish mop. Less lint, longer lasting, and faster drying. Excellent for waxing.

| ITEM NO. | SIZE | HEADBAND | CASE PACK | CASE CUBE | WEIGHT LBS |
|----------|-------------|--------------------|-----------|-----------|------------|
| 700S | Small | 1¼" polyester tape | 12 | 1.09 | 10 |
| 700M | Medium | 1¼" polyester tape | 12 | 1.59 | 13.5 |
| 700L | Large | 1¼" polyester tape | 12 | 1.85 | 18 |
| 700XL | Extra large | 1¼" polyester tape | 12 | 2.37 | 22.5 |

Nylon

99 Series This 100% nylon finish mop holds liquid wax suspended by surface tension, not within its fibers. This smooth applicator glides along surfaces and releases finishes rapidly and completely with a lint-free shine.

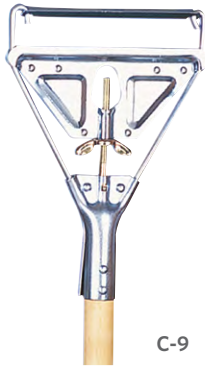
| ITEM NO. | SIZE | HEADBAND | CASE PACK | CASE CUBE | WEIGHT LBS |
|----------|-------------|--------------------|-----------|-----------|------------|
| 991S | Small | 1¼" polyester tape | 12 | 1.09 | 7.5 |
| 992M | Medium | 1¼" polyester tape | 12 | 1.59 | 15 |
| 993L | Large | 1¼" polyester tape | 12 | 1.85 | 18 |
| 994XL | Extra large | 1¼" polyester tape | 12 | 2.37 | 24 |

Nylon Flat

The mesh back construction and nylon yarn used in these finish mops allows for rapid, lint free release of floor finishes. Nylon yarn glides easily over smooth surfaces to provide streak free results. Keyhole construction with ties.

| ITEM NO. | LENGTH | WIDTH | CASE PACK | CASE CUBE | WEIGHT LBS |
|----------|--------|-------|-----------|-----------|------------|
| FMN185 | 18" | 5" | 12 | 1.09 | 13 |
| FMN245 | 24" | 5" | 12 | 1.59 | 16 |





C-9

Metal Quick Change

Heavy duty plated metal and a metal wing nut characterize this popular style of mop handle. Swing away bar facilitates fast mophead changes. Recommended for narrow band mopheads.

| ITEM NO. | DESCRIPTION | DIA./SIZE INCHES | OVERALL LENGTH INCHES | HANDLE | CASE PACK | CASE CUBE | WEIGHT LBS |
|----------|----------------------|------------------|-----------------------|--------|-----------|-----------|------------|
| C-9 | Janitor Quick Change | 1½ x 54 | 61½ | Pine | 12 | 2.86 | 27 |
| C-960 | Janitor Quick Change | 1½ x 60 | 67½ | Pine | 12 | 3.14 | 29 |
| C-7QC | Junior Quick Change | 1 x 54 | 61½ | Pine | 12 | 1.21 | 15.5 |



C-8P



C-8PRP
100% Recycled plastic

Plastic Quick Change

Features a durable polypropylene molded head for corrosion resistance, while a thumbwheel and side gate facilitate fast and easy changes. Wide head accommodates any size mop. C-8P and C-8P60 are available with red, green, yellow and blue fiberglass handles. Add R, Y, or B for color. (ex. C-8PR) Recommended for narrow band mopheads. Also available with an eco-friendly recycled plastic head. Recycled plastic for the quick change head is derived from car battery casings. Available in black only.

| ITEM NO. | DESCRIPTION | DIA./SIZE INCHES | OVERALL LENGTH INCHES | HANDLE | CASE PACK | CASE CUBE | WEIGHT LBS |
|----------|------------------------------|------------------|-----------------------|------------|-----------|-----------|------------|
| C-8P | Janitor Plastic Quick Change | 1 x 54 | 61¼ | Fiberglass | 12 | 2.86 | 26 |
| C-8P60 | Janitor Plastic Quick Change | 1 x 60 | 67¼ | Fiberglass | 12 | 3.14 | 27 |
| C-8PW | Janitor Plastic Quick Change | 1½ x 54 | 61¼ | Pine | 12 | 2.86 | 26 |
| C-8PM54 | Plastic Quick Change | 1 x 54 | 61¼ | Metal | 12 | 2.86 | 16 |
| C-8PM60 | Plastic Quick Change | 1 x 60 | 67¼ | Metal | 12 | 3.14 | 17 |

Add RP to item number for 100% recycled plastic head. (Ex. C-8PPWRP)

Metal Stirrup

This stirrup has heavy duty plated metal construction to resist corrosion, and a sturdy metal wing nut to prevent slippage. Recommended for narrow band mopheads.

| ITEM NO. | DESCRIPTION | DIA./SIZE INCHES | OVERALL LENGTH INCHES | HANDLE | CASE PACK | CASE CUBE | WEIGHT LBS |
|----------|---------------------------------|------------------|-----------------------|--------|-----------|-----------|------------|
| C-8 | Metal Stirrup Wingnut Clamp | 1½ x 54 | 61½ | Pine | 12 | 2.86 | 26 |
| C-7 | Jr. Metal Stirrup Wingnut Clamp | 1 x 54 | 61½ | Pine | 12 | 1.21 | 15 |

Gripper

Gripper handles feature a 4" stainless steel plated stirrup that is corrosion resistant. The clamp around the handle uses spring tension to lock into place. The stirrup opens wide, allowing you to change soiled mops without the need to handle them. The Gripper can hold any size mophead, wide band or narrow band.

| ITEM NO. | DESCRIPTION | DIA./SIZE INCHES | OVERALL LENGTH INCHES | HANDLE | CASE PACK | CASE CUBE | WEIGHT LBS |
|----------|-------------|------------------|-----------------------|----------|-----------|-----------|------------|
| C-4 | Gripper | 1½ x 60 | 60½ | Hardwood | 12 | 3.14 | 22 |



C-8



C-4



Jaws Mate

Extra durable jaws style head puts the “bite” on wet mops! Threaded compression collar provides secure grip and allows you to change a soiled mophead without touching it. Recommended for wide band mopheads. C-14 and C-1460 are available with red, green, yellow and blue fiberglass handles. Add R, Y, or B for color. (ex. C-14R) Also available with an eco-friendly recycled plastic head. Black recycled plastic for the quick change head is derived from car battery casings. Available in black only.

| ITEM NO. | DESCRIPTION | DIA/SIZE INCHES | OVERALL LENGTH INCHES | HANDLE | CASE PACK | CASE CUBE | WEIGHT LBS |
|----------|--------------|-----------------|-----------------------|------------|-----------|-----------|------------|
| C-14PM54 | Plastic Jaws | 1 x 54 | 60 | Metal | 12 | 2.86 | 16 |
| C-14PM60 | Plastic Jaws | 1 x 60 | 66¼ | Metal | 12 | 3.14 | 17 |
| C-14 | Jaws Mate | 1 x 54 | 60 | Fiberglass | 12 | 2.86 | 20 |
| C-1460 | Jaws Mate | 1 x 60 | 66¼ | Fiberglass | 12 | 2.86 | 22 |
| C-14W | Jaws Mate | 1½ x 54 | 60 | Pine | 12 | 2.86 | 20 |

Add RP to item number for 100% recycled plastic head. (Ex. C-14PWRP)



Heavy Duty Plastic

Heavy duty molded plastic heads are impact and shatter resistant. Quick change and stirrup models feature thumbscrews to make changing mops fast and efficient. The heavy duty blue jaws model features durable hand tightened jaws that can hold the biggest wide band mops. Jaws and Quick Change models available in blue, Stirrup is available in blue and orange.

| ITEM NO. | DESCRIPTION | DIA/SIZE INCHES | OVERALL LENGTH INCHES | HANDLE | CASE PACK | CASE CUBE | WEIGHT LBS |
|----------|----------------------------|-----------------|-----------------------|------------|-----------|-----------|------------|
| HDJ60 | Blue Jaws | 1 x 60 | 66¼ | Fiberglass | 12 | 3.14 | 26 |
| HDS600 | Orange Stirrup | 1 x 60 | 67 | Fiberglass | 12 | 3.14 | 26 |
| HDS600W | Orange Stirrup Wood Handle | 1 x 60 | 69½ | Pine | 12 | 3.14 | 26 |

Quick Bite

Molded of durable black polypropylene, the Quick Bite is one of our handiest handles! No turn screw is necessary - the trigger release mechanism releases a soiled mop in seconds keeping your hands clean and dry. Quick Bite accommodates most mop heads, and is perfect for finish mops. Made of light weight, corrosion proof plastic which will not scratch floors.



| ITEM NO. | DESCRIPTION | DIA/SIZE INCHES | OVERALL LENGTH INCHES | HANDLE | CASE PACK | CASE CUBE | WEIGHT LBS |
|-----------|-------------|-----------------|-----------------------|------------|-----------|-----------|------------|
| QB-8P | Quick Bite | 1 x 54 | 56½ | Fiberglass | 12 | 2.86 | 26 |
| QB-8P60 | Quick Bite | 1 x 60 | 62½ | Fiberglass | 12 | 3.14 | 27 |
| QB-8PM-54 | Quick Bite | 1 x 54 | 56½ | Metal | 12 | 2.86 | 16 |
| QB-8PM-60 | Quick Bite | 1 x 60 | 62½ | Metal | 12 | 3.14 | 17 |

Cleaning Accessories

Janitor's Cart

This durable, easy-to-clean cart features 8" wheels and 3" non-marking casters. It has built-in tool holders for cleaning tools, a sturdy yellow vinyl trash bag, and two shelves for cleaning supplies. Some assembly required.

| ITEM NO. | DESCRIPTION | CASE PACK | CASE CUBE | WEIGHT LBS |
|----------|--------------|-----------|-----------|------------|
| MPC100 | Janitor Cart | 1 | 4.405 | 37 |



Mop Bucket

These 26 or 35 quart Mop Bucket is made of impact resistant high density polypropylene, with 3" non-marking swivel casters and protective bumpers. Yellow color and "caution" sign printed on sides increase visibility. Taller bucket increases capacity and also allows for better water containment, while the smooth molded construction allows for easy clean-up.

Side Press and Down Press Wringer Featuring a corrosion-resistant handle, this wringer can accommodate 12 - 32 oz. mops. Rust-resistant spring provides a long useful life.

| ITEM NO. | DESCRIPTION | CASE PACK | CASE CUBE | WEIGHT LBS |
|-----------|---|-----------|-----------|------------|
| MBW35Y-SP | 35 qt. Mop bucket/wringer combo, side press | 1 | 2.67 | 15.3 |
| MBW35Y-DP | 35 qt. Mop bucket/wringer combo, down press | 1 | 2.67 | 15.7 |
| MBW35Y | 35 qt. Mop Bucket | 1 | 2.67 | 10 |
| MBW26Y-SP | 26 qt. Mop bucket/wringer combo, side press | 1 | 2.44 | 12 |
| SP100 | Side press wringer | 2 | 1.53 | 12 |
| DP100 | Down press wringer | 2 | 1.53 | 12 |



Safety Sign

Our Safety signs are of high visibility yellow polypropylene, with OSHA mandated print and symbols. Printed in both English and Spanish for effective communication. Molded of lightweight, tough, and durable polypropylene for long service.

2 Sided Safety Sign Folds flat for easy storage or can hang easily on janitor cart. Molded two-piece construction, no hinges to break. Snap and lock system.

| ITEM NO. | DESCRIPTION | CASE PACK | CASE CUBE | WEIGHT LBS |
|----------|-------------------------|-----------|-----------|------------|
| B-132 | 24" 2-sided safety sign | 6 | 1.67 | 10 |

Utility Pail

10 quart utility pails have a comfort-grip plastic and a corrosion-resistant wire handle for carrying. Utility pails feature wide pour spouts, and are available in grey, red, yellow, blue, and green (not pictured).

| ITEM NO. | DESCRIPTION | CASE PACK | CASE CUBE | WEIGHT LBS |
|----------|---------------------------------------|-----------|-----------|------------|
| PL10GRY | 10 qt. grey pail | 12 | 1.59 | 5 |
| PLS10B | 10 qt. blue sanitizer pail, printed | 12 | 1.59 | 5 |
| PLS10R | 10 qt. red sanitizer pail, printed | 12 | 1.59 | 5 |
| PLS10Y | 10 qt. yellow sanitizer pail, printed | 12 | 1.59 | 5 |



Utility Pail

Maid's Caddy

Made of high-impact gray plastic, this maid's caddy fits most janitor carts. It features a handle, three molded compartments for carrying cleaning supplies, and two small item trays. Tough, seamless construction is leak-proof, and resists most chemicals.

| ITEM NO. | DESCRIPTION | CASE PACK | CASE CUBE | WEIGHT LBS |
|----------|--------------------------------------|-----------|-----------|------------|
| PTC-073 | Maid's Caddy (handy cleaning basket) | 12 | 0.8 | 11 |



Maid's Caddy

Tool Holder

This wall mounted 3-position tool holder can hold cleaning tools, gardening tools and sports equipment of varying diameters. Gravity rollers hold the handles in place. Mounting hardware included.

| ITEM NO. | DESCRIPTION | CASE PACK | CASE CUBE | WEIGHT LBS |
|-----------|------------------------|-----------|-----------|------------|
| ODLZTH300 | 3 position tool holder | 12 | 1.03 | 9.5 |



Tool Holder

Laundry Net

Specially designed polyester leno weave mesh bags for laundering mops and pads. Laundering pads in a mesh bag will minimize tangling or contamination. Comes with a slip lock closure and I. D. tag. Available in blue or white.

| ITEM NO. | COLOR | SIZE | CASE PACK | CASE CUBE | WEIGHT LBS |
|-----------|-------|-----------|-----------|-----------|------------|
| L2436W-ID | white | 24" x 36" | 12 | 0.84 | 11 |
| L2436B-ID | blue | 24" x 36" | 12 | 0.84 | 11 |
| L1830W-ID | white | 18" x 30" | 12 | 0.84 | 6 |
| L1824W-ID | blue | 18" x 24" | 12 | 0.84 | 6 |

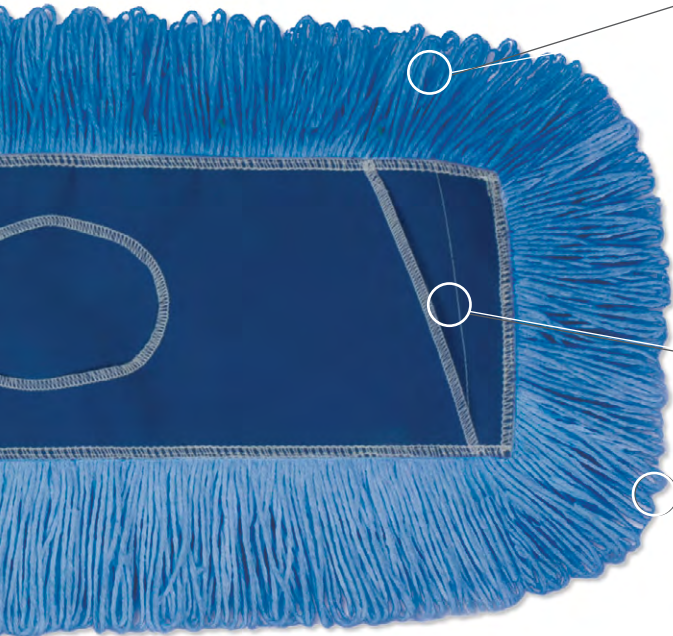
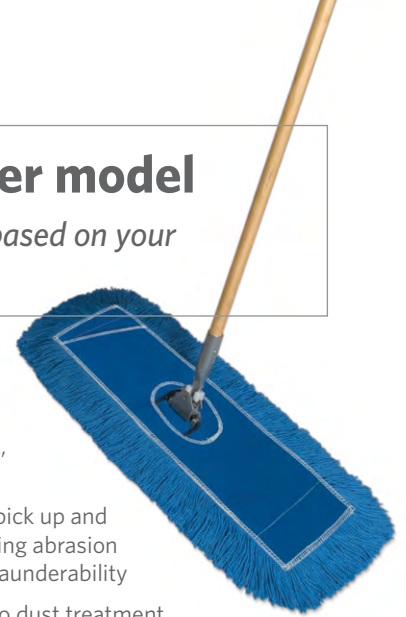


Laundry net

Dust Mops

Choosing the proper model

Make the right choice of mop based on your specific job requirement.



Yarn Types

Cotton: Economical, Accepts dust treatment, Picks up large debris

Synthetic: No dust treatment needed, Dust pick up and retention through static attraction, Long lasting abrasion resistant fibers, Picks up large debris, Good launderability

Hybrid Yarn - Microfiber/Synthetic Yarn: No dust treatment needed, Traditional construction - no need to buy new hardware and handles, Dust pick up and retention through static and tiny microfibers, Long lasting fibers, Great launderability

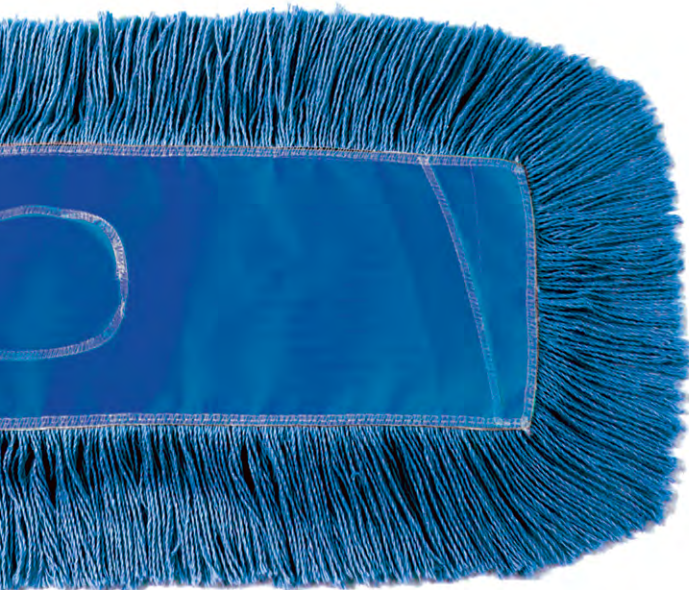
Backing

Slot pocket style. Durable polyester backing dries quickly. Available colors: blue, green, yellow, orange, and red. Ex: add code BB to item code for blue back

Ends

Cut End: Low initial cost, Good dust pick up

Looped End: Great launderability, reduced tangling, longer life vs. cut end



Clinger Magnetic Cut End

Synthetic yarns with superior pick up ability. The static charge created when using this product attracts and holds fine dust particles. No treatment is required. The special heat-set bonding process of synthetic fibers protect the mop from linting and unraveling. Standard slot pocket synthetic backing. A real problem solver. Available in blue. Launderable.

| ITEM NO. | LENGTH | WIDTH | CASE PACK | CASE CUBE | WEIGHT LBS |
|----------|--------|-------|-----------|-----------|------------|
| CL185 | 18" | 5" | 12 | 0.98 | 6.9 |
| CL245 | 24" | 5" | 12 | 1.54 | 8.7 |
| CL365 | 36" | 5" | 12 | 1.54 | 12.3 |
| CL485 | 48" | 5" | 12 | 1.93 | 16.1 |
| CL605 | 60" | 5" | 3 | 2.23 | 6.4 |
| CL725 | 72" | 5" | 3 | 2.23 | 7.3 |

* For color choice: Add the initial of desired color to the item number. Ex: CL725B



Hospital Loop

Hospital Grade Dust Mop Refills The ideal dust mop for health care use. 4 ply blended yarns. Looped ends reduce linting and provide longer wear. Standard slot pocket construction. Available in blue and natural*. Launderable.

| ITEM NO. | LENGTH | WIDTH | CASE PACK | CASE CUBE | WEIGHT LBS |
|----------|--------|-------|-----------|-----------|------------|
| HL185 | 18" | 5" | 12 | 0.98 | 8.5 |
| HL245 | 24" | 5" | 12 | 1.54 | 11.4 |
| HL365 | 36" | 5" | 12 | 1.54 | 16.5 |
| HL485 | 48" | 5" | 12 | 1.93 | 21.8 |
| HL605 | 60" | 5" | 3 | 2.23 | 7.7 |

* For color choice: Add the initial of desired color to the item number. Ex: HL725B



JJ Continuous Twist

The perfect mop for maximum dust pickup and longevity. The imbalanced twist in the synthetic blend yarn produces single end loops that provide unmatched dust capturing capacity and durability. The materials and construction used in producing the JJ series offer extended service. The iron man of dust mops. Standard slot pocket construction. Available in blue, red, and white.* Launderable.

| ITEM NO. | LENGTH INCHES | CASE PACK | CASE CUBE | WEIGHT/LBS |
|----------|---------------|-----------|-----------|------------|
| JJ185 | 18 | 12 | 1.80 | 10.0 |
| JJ245 | 24 | 12 | 1.80 | 12.8 |
| JJ365 | 36 | 12 | 2.42 | 18.9 |
| JJ485 | 48 | 12 | 2.42 | 24.4 |
| JJ605 | 60 | 3 | 4.04 | 8.9 |

*For color choice: Add the initial of desired color to the item number.



Echo Dust Mop

These dust mops are manufactured using recycled PET. Available in cut end or looped end styles to meet the most demanding of dust mopping needs. Standard slot pocket construction.

| LOOPED END | SIZE | CASE PACK | CASE CUBE | WEIGHT LBS |
|------------|--------|-----------|-----------|------------|
| ECHO185L | 5 x 18 | 12 | 1.09 | 11 |
| ECHO245L | 5 x 24 | 12 | 1.59 | 13 |
| ECHO365L | 5 x 36 | 12 | 1.85 | 17 |
| ECHO485L | 5 x 48 | 12 | 2.37 | 28 |
| ECHO605L | 5 x 60 | 3 | 0.76 | 9 |
| ECHO725L | 5 x 72 | 3 | 0.76 | 12 |





Cut End Hygrade Industrial

Cotton cut-end dust mop refill. Sewn 4 ply. Slot pocket construction. Synthetic backing material for faster drying. Available in 5" widths up to 60". Launder with care.

| ITEM NO. | LENGTH INCHES | CASE PACK | CASE CUBE | WEIGHT/LBS |
|----------|---------------|-----------|-----------|------------|
| M185 | 18 | 12 | 1.80 | 8.8 |
| M245 | 24 | 12 | 1.80 | 11.8 |
| M365 | 36 | 12 | 1.80 | 17.14 |
| M485 | 48 | 12 | 1.80 | 22.6 |
| M605 | 60 | 3 | 1.80 | 8.2 |



Disposable

A great value in cotton pretreated yarns. Sewn center fringe for added coverage. Natural color in 5" widths.

| ITEM NO. | LENGTH INCHES | CASE PACK | CASE CUBE | WEIGHT LBS |
|----------|---------------|-----------|-----------|------------|
| DM185 | 18 | 12 | 1.09 | 9 |
| DM245 | 24 | 12 | 1.59 | 11 |
| DM365 | 36 | 12 | 1.59 | 15 |
| DM485 | 48 | 12 | 1.85 | 20 |
| DM605 | 60 | 3 | 0.76 | 8.25 |



Flash 40 Disposable Roll

Flash Forty comes pretreated in a natural color yarn. Slot pocket design backing accepts standard wire frame. Five inch width/ 40 ft. roll packed in a heavy duty carton. Razor included.

| ITEM NO. | SIZE | CASE PACK | CASE CUBE | WEIGHT LBS |
|----------|------|-----------|-----------|------------|
| FF40 | 40' | 1 | 1.65 | 16 |



Frames and Handles

Frames Our frames feature welded one-piece construction and are constructed to meet industry specs. Made of black powder coated metal wire for corrosion resistance. Use with clip-on handles.

| ITEM NO. | LENGTH INCHES | CASE PACK | CASE CUBE | WEIGHT/LBS |
|----------|---------------|-----------|-----------|------------|
| F185 | 18 | 12 | 0.29 | 8 |
| F245 | 24 | 12 | 0.39 | 9 |
| F305 | 30 | 12 | 0.49 | 11 |
| F365 | 36 | 12 | 0.58 | 14 |
| F485 | 48 | 12 | 0.77 | 18 |
| F605 | 60 | 12 | 0.96 | 22 |
| F725 | 72 | 12 | 1.15 | 25 |

Clip-On Handles Spring clip attaches to standard wire dust mop frames. Nylon slide lock may be engaged to hold frame and mop firmly in place or left disengaged to allow for swiveling action.

| ITEM NO. | SIZE | HANDLE | CASE PACK | CASE CUBE | WEIGHT LBS |
|----------|--------------|--------------------|-----------|-----------|------------|
| H600 | 15/16" x 60" | wood | 12 | 1.54 | 20 |
| H601 | 1 1/8" x 60" | wood | 12 | 1.54 | 30 |
| H602 | 1" x 60" | fiberglass | 12 | 1.54 | 25 |
| H600M | 15/16" x 60" | vinyl coated steel | 12 | 1.54 | 19 |



Triangle Dust Mop

A great dust mop for hard to reach overheads and corners. In cotton cut-end yarns. Frame accepts any standard threaded handle.

| ITEM NO. | DESCRIPTION | CASE PACK | CASE CUBE | WEIGHT LBS |
|----------|----------------------------|-----------|-----------|------------|
| TRIR | mop | 12 | 0.76 | 3 |
| TRIF | frame | 12 | 0.76 | 1 |
| TRIF-H | frame and handle combo-48" | 12 | 1.07 | 11 |

Brooms & Brushes

Choosing the proper model

Make the right choice of broom based on your specific job requirement.



Corn Brooms

100% Corn

Broom Corn or broom straw is actually a form of Sorghum, grown specifically for its ability to trap fine dust particles. Microscopic splits on the tassel's outer walls capture dust, making it "the first microfiber". It is water resistant and wears very well, making it the premium broom fiber. Broom corn goes from seed to harvest in about 3 months. It is environmentally friendly because it grows in dry areas, using only rain water. Nothing is wasted - leftover straw and seeds after harvest are used for animal feed.

Corn/fiber

Corn/fiber blended brooms are constructed of broom corn and sotol fibers from the yucca plant. Yucca is a member of the agave or century plant family, which thrives in warm, arid regions. Yucca supplies fibers for rope, mats and basketry. The stiff sotol fibers are used to make the broom's core, which is then wrapped with a layer of broom corn. This makes a strong, economical broom.

Poly fiber

Polypropylene fibers give good sweeping performance indoors or outdoors, especially in damp environments. The tough fibers give a long wear life, do not absorb water, and are resistant to most chemicals, detergents, insects, and mildew.

100% Corn Brooms

Corn broom is absolutely the best broom fiber for resiliency, strength and wear. Our brooms are bound with double-stitched nylon cord and wire wrapped onto wood handles.

| ITEM NO. | DESCRIPTION | OVERALL LENGTH | HANDLE DIA. | CASE PACK | CASE CUBE | WEIGHT LBS |
|----------|--|----------------|-------------|-----------|-----------|------------|
| A01001 | 36 lb. Warehouse Corn/heavy duty/4 sew/wire band | 56" | 1 1/8" | 6 | 2.51 | 18 |
| A21001 | 26 lb. Janitor Corn/5 sew | 56" | 1 1/8" | 6 | 2.51 | 13 |



A01001

CORN BROOMS

Corn/Fiber Brooms

Economy and performance are hallmarks of these corn/fiber brooms. These durable upright brooms can tackle routine or heavy-duty cleaning jobs.

| ITEM NO. | DESCRIPTION | OVERALL LENGTH | HANDLE DIA. | CASE PACK | CASE CUBE | WEIGHT LBS |
|-------------|--|----------------|-------------|-----------|-----------|------------|
| A03001 | 36 lb. Warehouse - heavy duty/4 sew/wire band | 56" | 1 1/8" | 6 | 2.51 | 18 |
| A12001 | 32 lb. Warehouse - heavy duty/4 sew/wire band | 56" | 1 1/8" | 6 | 2.51 | 16 |
| A20501 | 30 lb. Janitor/5 sew | 56" | 1 1/8" | 6 | 2.51 | 15 |
| A205013W-JB | 30lb Jail broom- 56" handle - no metal | 56" | 1 1/8" | 6 | 2.51 | 15 |
| B58001 | Medium weight/clear lacquered handle/5 sew/ orange stitching | 55" | 15/16" | 12 | 3.46 | 22 |
| C00001 | Light weight "Zoom Broom"/4 sew | 55" | 7/8" | 12 | 3.46 | 20 |
| C00101 | Feather weight "Liberty Broom"/4 sew | 55" | 7/8" | 12 | 3.46 | 18 |
| D12501 | Lobby Broom - 30" clear handle | 40" | 7/8" | 12 | 1.83 | 8 |



D11501

D12501

Toy Brooms and Whisks

These handy commercial cleaning items may also be used for campers, RVs and boats. O'Dell fine quality in miniature.

| ITEM NO. | DESCRIPTION | OVERALL LENGTH | HANDLE DIA. | CASE PACK | CASE CUBE | WEIGHT LBS |
|----------|---|----------------|-------------|-----------|-----------|------------|
| D11501 | Toy broom with 24" red handle | 35" | 7/8" | 12 | 1.83 | 7 |
| D12501 | Lobby broom with 34" clear handle | 40" | 7/8" | 12 | 1.83 | 8 |
| F10001 | Whisk broom | 13" | NA | 12 | 0.76 | 6 |
| LDPB | Lobby broom long wearing plastic fiber. Complimentary item for lobby dust pan | 35 1/2" | 7/8" | 12 | 2.14 | 10.4 |



LDPB



F10001

UPRIGHT BROOMS

Polyfiber Brooms and Angle Brooms

Smooth plastic fibers are washable, durable, and waterproof. Ideal for food preparation areas. Flagged synthetic bristles sweep fine particles as well as large debris. Angle head brooms are designed to reach into the tightest corners with ease.

| ITEM NO. | DESCRIPTION | OVERALL LENGTH | HANDLE DIA. | CASE PACK | CASE CUBE | WEIGHT LBS |
|-----------|----------------------------------|----------------|-------------|-----------|-----------|------------|
| D13000 | Indoor/Outdoor 4 sew | 54" | 7/8" | 12 | 2.51 | 20 |
| D13000-BP | Indoor/Outdoor 4 sew- Black Poly | 54" | 7/8" | 12 | 2.51 | 20 |
| A12001-BP | Black Poly Warehouse | 55" | 1 1/8" | 6 | 2.49 | 16 |
| D12501-BP | Black Poly Lobby broom | 39" | 7/8" | 12 | 2.19 | 9.4 |
| C00081 | Mini Slant Angle | 53" | 7/8" | 12 | 2.51 | 12 |
| F11601 | Maxi Slant Angle | 53" | 7/8" | 6 | 2.51 | 9.9 |

Multibroom

Versatile multi-brooms allow the user to use as an upright or an angled broom, based on need. Available in rugged black polypropylene for heavy sweeping, or flagged blue poly for finer sweeping.

| ITEM NO. | DESCRIPTION | OVERALL LENGTH | HANDLE DIA. | CASE PACK | CASE CUBE | WEIGHT LBS |
|----------|-------------------------|----------------|-------------|-----------|-----------|------------|
| MB-FWH | Flagged Tip Warehouse | 54" | 7/8" | 6 | 2.51 | 17 |
| MB-FLS | Flagged Tip Light sweep | 51" | 7/8" | 12 | 2.51 | 15 |
| MB-BWH | Black fiber warehouse | 54" | 7/8" | 6 | 2.51 | 17 |
| MB-BLS | Black fiber light sweep | 51" | 7/8" | 12 | 2.51 | 15 |
| F11602M | Large mono block angle | 54" | 7/8" | 6 | 2.51 | 7.75 |



D13000-BP



D13000



D12501-BP



A12001-BP



MB-BLS



MB-BWH



F11602M



C00081



MB-FLS



MB-FWH



F11601



Dust Pans

Choose a dust pan from our collection to meet your specific commercial, industrial, or indoor/outdoor needs. All come with hang holes for wall storage.

| ITEM NO. | DESCRIPTION | CASE PACK | CASE CUBE | WEIGHT LBS |
|----------|--|-----------|-----------|------------|
| DP222 | Industrial plastic dust pan. Strong, flexible black plastic construction. 12" wide mouth. | 12 | 1.59 | 5.0 |
| DP200 | Clip-on dust pan. Contoured handle fits onto standard broom handles for easy storage and portability. 12" wide mouth. | 36 | 2.77 | 10.75 |
| DP550 | Heavy duty metal dust pan. Durable metal construction for the toughest sweeping jobs. 12" wide mouth. | 24 | 0.89 | 28.75 |
| LDP1 | 12" wide mouth high impact lobby dust pan. 30" locking handle enables spill-proof pan carrying and hang-up. | 6 | 2.31 | 14.0 |
| LDP1-RP | 12" wide lobby dust pan produced from post-consumer plastics and recycled tires. 30" locking handle with hang cap. Rear wheels prevent abrasion when dragging. | 6 | 2.31 | 14.0 |

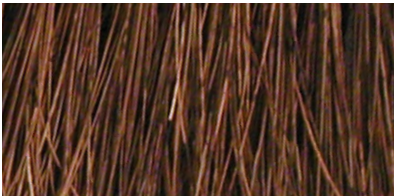


Choosing Brush Fibers



Nylon

Nylon is a flexible, silky synthetic fiber first used in the 1930s to make toothbrush bristles and women's hosiery. Nylon has a high heat tolerance – it melts instead of burns. It stands up to most acids, alkalis, oil, detergents, and solvents, and is extremely abrasion resistant. Strong enough to be used for seatbelts, nylon resists rot, bugs and mildew. Unlike most polymers, it will absorb water, but does not mat or hold odors. For this reason, it is used in food service.



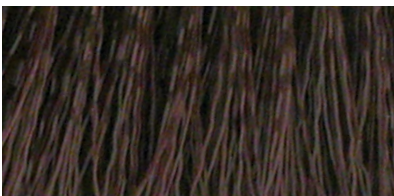
Palmyra

Palmyra fibers come from the leaf stalks of the Palmyra palm, native to India, Southeast Asia, and Africa. Also called a Sugar palm, Palmyra resembles a tall coconut tree. The leaves are used to make thatching, baskets, and fans, as well as brush bristles. Durable Palmyra is brown in color, has a stiff- to medium-stiff texture, and is resistant to liquids. Economical and tough, Palmyra is ideal as an all-purpose heavy duty sweep for sidewalks, patios, driveways, and general landscape maintenance.



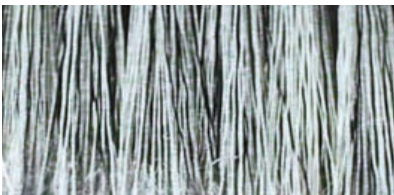
Palmyra Stalks

Also a product of the Palmyra palm, Palmyra stalks are very coarse, stiff, and strong. It has the appearance of split bamboo or cinnamon bark. Used in its native habitat for fencing, Palmyra stalks are commonly made into street brooms, and used for clearing the heaviest debris. Excellent for wet and dry use; over pavement, concrete and driveways.



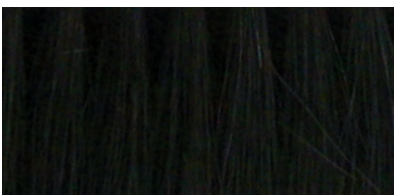
Polypropylene

Polypropylene is a synthetic fiber that is available in many colors and weights for different applications. Poly fibers have a long useful life and are acid and solvent resistant. They are waterproof and rot resistant, and dry quickly. Crimped poly fibers have more water retention ability, and flagged poly fibers have a soft bristle tip that can gather fine particles of debris. Perfect for industrial and commercial settings where sweeping is constant, polypropylene can be used for scrubbing wet and dry surfaces.



Polystyrene

A durable synthetic fiber that resists moisture and most solvents, polystyrene is almost as strong as aluminum, but much more flexible. Flagged polystyrene fibers deliver dependable, non-scratch performance to painted vehicle surfaces and windows. Excellent for service stations, food service and other commercial applications.



Tampico

Derived from the leaf of the Lechugilla plant of Mexico, tampico has a soft to medium texture. It has a natural white color, but is frequently dyed or bleached. Tampico has good resistance to heat and chemicals, good water retention, and can maintain its stiffness while wet. It has excellent shape memory, and can be used alone or blended with other fibers.



SB10006



SBP10006



L100



S100

Floor Sweeps

Palmyra

Good for indoor or outdoor sweeping on concrete or any other hard surface. Stiff brown natural fiber. Lacquered, quality hardwood blocks. Hardwood block with 3 1/4" trim

Black Polypropylene Fiber

Medium floor sweep. Ideal for commercial and industrial floors. Tough enough for outdoor sweeping. Hardwood block in 3" trim. Highly recommended for multiple uses.

Black Tampico

Medium/fine floor sweep. Soft, black natural fibers for smooth or rough floors. Hardwood blocks in 2 3/4" trim.

Maroon Polypropylene Fiber

Heavy floor sweep. A man-made coarse fiber. Great for heavy duty use in a commercial or industrial setting, like gas stations, garages, or car wash. Impervious to water. Hardwood block in 3" trim.

Grey Polypropylene Fiber

Soft flagged grey plastic fiber is ideal for sweeping fine dust and dirt on smooth surfaces. Hardwood block with 3" trim.

| PALMYRA | BLACK POLY | BLACK TAMPICO | MAROON POLY | GREY POLY | LENGTH INCHES | CASE PACK | CASE CUBE | WEIGHT LBS |
|---------|------------|---------------|-------------|-----------|---------------|-----------|-----------|------------|
| P10005 | BP18 | T80100 | MP18 | FC18 G | 18 | 12 | 1.67 | 20.3 |
| P10003 | BP24 | T80001 | MP24 | FC24 G | 24 | 12 | 2.20 | 30.5 |
| P10007 | BP36 | T80300 | MP36 | FC36 G | 36 | 6 | 1.77 | 23.5 |



Our wooden brush blocks derive from sustainably managed forests

Street Broom

Coarse natural palmyra or synthetic fibers push heavy debris from streets, sidewalks and parking lots. Either style may be used wet or dry.

| ITEM NO. | DESCRIPTION | LENGTH INCHES | CASE PACK | CASE CUBE | WEIGHT LBS |
|----------|---------------|---------------|-----------|-----------|------------|
| SB10006 | Palmyra Stalk | 16 | 12 | 2.58 | 32 |
| SBP10006 | Brown Plastic | 16 | 12 | 2.58 | 34 |

Push Broom Handle Braces

Both the large and small handle braces lend added support to prevent handles from breaking under strenuous conditions. The small brace may be used on all push broom sizes however, the large brace is recommended for 36" blocks.

| ITEM NO. | SIZE | CASE PACK | CASE CUBE | WEIGHT LBS |
|----------|-------|-----------|-----------|------------|
| L100 | Large | 12 | .030 | 4 |
| S100 | Small | 60 | .030 | 12 |

UTILITY SCRUB BRUSHES

All utility scrub brushes are made using molded plastic blocks with either 8" or 20" handles. A variety of fibers are available to suit your specific needs: fine, coarse, natural, or synthetic.

Cream Plastic

Polypropylene fibers are resistant to acids, solvents, and rot. Fibers are flared out to reach tight corners. Durable, waterproof poly fibers will not scratch or streak. Tough enough to scrub white wall tires, gentle enough to spot clean carpets and upholstery.

| ITEM NO. | DESCRIPTION | CASE PACK | CASE CUBE | WEIGHT LBS |
|----------|----------------------------------|-----------|-----------|------------|
| CP-8 | Utility Brush Cream Plastic 8.5" | 12 | 0.60 | 5 |
| CP-20 | Utility Brush Plastic 20" | 12 | 1.15 | 9 |



Palmyra

Palmyra is an economical, all-purpose natural scrub for heavy duty hand scrubbing, both commercial and residential. Strong, stiff fibers are flared to reach debris to tight corners. Palmyra will not scratch or streak, but it powers through tough industrial-strength dirt and grime.

| ITEM NO. | DESCRIPTION | CASE PACK | CASE CUBE | WEIGHT LBS |
|----------|---------------------------|-----------|-----------|------------|
| PAL-8 | Utility Brush Palmyra 8" | 12 | 0.60 | 5 |
| PAL-20 | Utility Brush Palmyra 20" | 12 | 1.15 | 9 |



White Nylon

Nylon is a silky, flexible synthetic fiber that with superior abrasion resistance. Nylon stands up to common cleaners, detergents, acids or alkalis, and has excellent water retention. Nylon does not mat or hold odors. Nylon fibers are heat resistant, ideal for scrubbing kitchen areas. Good choice for all-purpose food service and healthcare cleaning.

| ITEM NO. | DESCRIPTION | CASE PACK | CASE CUBE | WEIGHT LBS |
|----------|-------------------------------|-----------|-----------|------------|
| N-9 | Utility Brush White Nylon 9" | 12 | 0.60 | 5 |
| N-20 | Utility Brush White Nylon 20" | 12 | 1.15 | 9 |



Tampico

Tampico is a natural fiber with a soft to medium-soft texture, with excellent water and solution retention. Good light-duty scrubbers, tampico brushes will not scratch or streak. Tampico is resistant to cleaning chemicals, and makes a good general cleaning brush for institutional and commercial settings.

| ITEM NO. | DESCRIPTION | CASE PACK | CASE CUBE | WEIGHT LBS |
|----------|----------------------------------|-----------|-----------|------------|
| WT-8 | Utility Brush White Tampico 8.5" | 12 | 0.60 | 5 |
| WT-20 | Utility Brush White Tampico 20" | 12 | 1.15 | 9 |



UTILITY SCRUB BRUSHES

Hand Scrub Brush

These brushes are ideal for small jobs where detailed cleaning is required. Our iron handle brush is comfortable to hold and can be used for many scrubbing jobs including upholstery. The stiff black fibers of our grout brush are ideal for tough to reach grout jobs.

| ITEM NO. | DESCRIPTION | CASE PACK | CASE CUBE | WEIGHT LBS |
|----------|---|-----------|-----------|------------|
| HS-IS6 | 6" Iron-Style Scrub Brush, Poly fiber | 24 | 0.46 | 11.0 |
| GB100 | Grout Brush Nylon, Poly fiber | 24 | 0.10 | 1.68 |
| HS-WP9SB | Scrub Brush, wood block, Poly fiber | 24 | 0.58 | 16.0 |
| HS-WP9CB | Can Scrub Brush, Poly fiber | 24 | 0.25 | 11.0 |
| 5NCB | Fingernail Scrub brush, wood block, white tampico fiber | 20 | 0.22 | 0.3 |

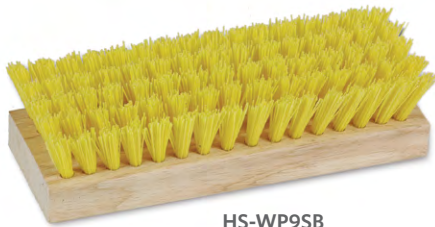


HS-IS6

HS-WP9CB



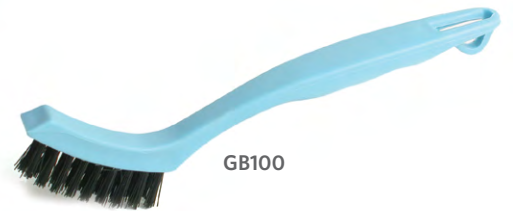
 Our wooden brush blocks derive from sustainably managed forests



HS-WP9SB



5NCB



GB100

Wash Brush

Soft flagged polystyrene fibers and bumpers prevent unwanted scratches and damage when cleaning vehicles. All brushes feature structural foam blocks with a tapered handle hole and a flow through threaded handled hole for use with fountain handles. Perfect for large cleaning jobs where a delicate touch is needed.

| ITEM NO. | DESCRIPTION | CASE PACK | CASE CUBE | WEIGHT LBS |
|----------|--------------------------------|-----------|-----------|------------|
| TB100 | Truckwash Brush - Gray Flagged | 12 | 1.23 | 18 |
| VB100 | Dual Surface Vehicle Brush | 12 | 1.75 | 18 |
| WWBR4 | Window Wash Brush | 12 | 1.2 | 12.1 |



WWBR4

TB100



VB100

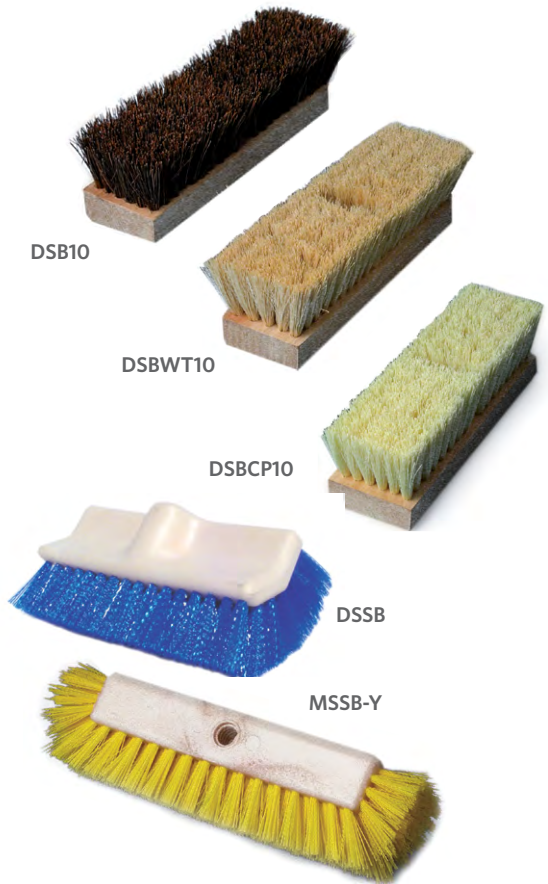


Deck Scrub Brush

Our standard deck scrubs are available with a variety of fibers staple set into hardwood blocks each having a tapered handle hole and a threaded handle hole. Multi surface and dual surface deck scrubs have crimped synthetic bristles set into structural foam blocks with one threaded handled hole. Whether you need chemical resistant polypropylene, the coarse scrubbing of palmyra or the liquid retention of tampico it can be found in these scrubs. Ideal for decks, patios, sidewalks or even baseboards and walls.

| ITEM NO. | DESCRIPTION | CASE PACK | CASE CUBE | WEIGHT LBS |
|----------|-----------------------------|-----------|-----------|------------|
| DSB10 | Deck Brush Palmyra 10 | 12 | 0.55 | 11 |
| DSBWT10 | Deck Brush White Tampico 10 | 12 | 0.55 | 11 |
| DSBCP10 | Deck Brush Cream Plastic 10 | 12 | 0.55 | 11 |
| DSBCP12 | Deck Brush Cream Plastic 12 | 12 | 0.65 | 15 |

| ITEM NO. | DESCRIPTION | CASE PACK | CASE CUBE | WEIGHT LBS |
|----------|---------------------|-----------|-----------|------------|
| DSSB | Dual-Surface Brush | 12 | 1.74 | 16 |
| MSSB-Y | Multi-Surface Brush | 12 | 1.11 | 16 |



Toilet Brushes, Mops and Plungers

SBB-12T 20" Coated & twisted wire tampico will not scratch porcelain surfaces

SBB-11 11" Plastic handle with cylindrical staple set fibers to prevent scratching surfaces.

SBB-11H Brush Bowl Holder for SBB-1RB

SBB-1RB 14" plastic handle with cylindrical staple set fibers to prevent scratching surfaces. Incorporated rim brush. Fits brush holder SBB-11-H.

CBW Heavy duty handle with wringing cone. Cone slides over acid resistant acrylic yarn to remove excess liquids. Will not scratch porcelain fixtures.

DBW Acrylic yarn and I beam handles combine to make a superior cleaning mop. 12" white handle. Will not scratch porcelain fixtures.

TBP100 Janitorial plunger has large cup for maximum pressure. 21" heavy duty yellow wooden handle.



| ITEM NO. | DESCRIPTION | CASE PACK | CASE CUBE | WEIGHT LBS |
|----------|---------------------------------------|-----------|-----------|------------|
| SBB-12T | 20" Coated & twisted wire tampico | 24 | 1.38 | 12 |
| SBB-11 | 11" Staple set cylindrical bowl brush | 24 | 1.38 | 5 |
| SBB-11-H | Brush Bowl Holder | 24 | 1.32 | 4.96 |
| SBB-11-C | Brush Bowl Holder | 12 | 3.08 | 6.5 |
| SBB-14RB | Toilet Brush | 48 | 1.59 | 11 |
| CBW | Cone Bowl Mop | 50 | 1.44 | 8 |
| DBW | Economy Bowl Mop | 100 | 1.10 | 13 |
| TBP100 | Toilet Plunger | 6 | 0.63 | 10.1 |

Dusters & Applicators

Counter Dusters

Counter dusters are available with smooth sweeping, grey flagged fibers, medium to fine tampico fibers, or medium black polypropylene fibers. All are set in structural foam blocks that feature an 8" sweeping face and a hanging hole. These dusters are great for workshops and industrial settings where equipment and work areas need to be kept tidy.

| ITEM NO. | DESCRIPTION | CASE PACK | CASE CUBE | WEIGHT LBS |
|----------|-----------------------------|-----------|-----------|------------|
| CD-BT8 | Counter Brush Black Tampico | 12 | 0.79 | 9 |
| CD-BP8 | Counter Brush Black Plastic | 12 | 0.79 | 9 |
| CD-FP8 | Counter Brush Gray Flagged | 12 | 0.79 | 9 |



Lambskin Applicators

Lambskin applicators have 3/4" thick Lambswool to provide a smooth lint and fiber free finish coat. Use with waxes, sealers and other floor finishes. Lambskin pad is wrapped around a lacquered hardwood block. Wing nuts and a smaller interior block hold the lambskin in place, and allow for easy pad replacement. Hardwood blocks have standard threaded holes.

| ITEM NO. | DESCRIPTION | CASE PACK | CASE CUBE | WEIGHT LBS | | | | | | | | | | | | | | | | | | | | | | | | | | | | | |
|----------|---------------------------|-----------|-------------|------------|---------------------------|----|------|----|-------|----------------|----|------|---|-------|----------------|----|------|---|-------|----------------|----|------|---|-------|----------------|----|------|---|-------|----------------|----|------|---|
| LAB12 | 12" Applicator with Block | 12 | 1.46 | 13 | | | | | | | | | | | | | | | | | | | | | | | | | | | | | |
| LAB14 | 14" Applicator with Block | 12 | 1.46 | 14 | | | | | | | | | | | | | | | | | | | | | | | | | | | | | |
| LAB16 | 16" Applicator with Block | 12 | 1.46 | 20 | | | | | | | | | | | | | | | | | | | | | | | | | | | | | |
| LAB18 | 18" Applicator with Block | 12 | 1.46 <td 25 | LAB24 | 24" Applicator with Block | 12 | 1.46 | 40 | LAP12 | 12" Refill Pad | 12 | 0.82 | 2 | LAP14 | 14" Refill Pad | 12 | 0.82 | 2 | LAP16 | 16" Refill Pad | 12 | 0.82 | 3 | LAP18 | 18" Refill Pad | 12 | 0.82 | 3 | LAP24 | 24" Refill Pad | 12 | 0.82 | 4 |
| LAB24 | 24" Applicator with Block | 12 | 1.46 | 40 | | | | | | | | | | | | | | | | | | | | | | | | | | | | | |
| LAP12 | 12" Refill Pad | 12 | 0.82 | 2 | | | | | | | | | | | | | | | | | | | | | | | | | | | | | |
| LAP14 | 14" Refill Pad | 12 | 0.82 | 2 | | | | | | | | | | | | | | | | | | | | | | | | | | | | | |
| LAP16 | 16" Refill Pad | 12 | 0.82 | 3 | | | | | | | | | | | | | | | | | | | | | | | | | | | | | |
| LAP18 | 18" Refill Pad | 12 | 0.82 | 3 | | | | | | | | | | | | | | | | | | | | | | | | | | | | | |
| LAP24 | 24" Refill Pad | 12 | 0.82 | 4 | | | | | | | | | | | | | | | | | | | | | | | | | | | | | |



Overhead Duster

The flex head overhead duster FHDT has an aluminum handle and an overall length of 60 inches. Designed to be used with microfiber dusting mitt.

| ITEM NO. | DESCRIPTION | CASE PACK | CASE CUBE | WEIGHT LBS |
|----------|------------------------------|-----------|-----------|------------|
| SLD-MITT | Spun Microfiber Dusting Mitt | 12 | 0.68 | 4.0 |

DUSTERS & APPLICATORS

Feather Dusters

Turkey feather - Economical, dyed feathers, available in 14" length.

Brown Ostrich feather - Available in 13", 14", 24", and also 31" for hard-to-reach spaces.

Gray Ostrich feather - Ostrich feathers have a natural static charge which attracts dust & cobwebs. Available in 20", and 28" lengths.

Black Ostrich feather - Premium black feathers have multiple silky tips to reach every dusty nook and crevice. Available in 20" and 28" lengths.

Retractable Ostrich feather - Premium ostrich feather performance in a convenient retractable handle that can fit in a pocket. 14" length only.

| ITEM NO. | DESCRIPTION | CASE PACK | CASE CUBE | WEIGHT LBS |
|-------------|-----------------------------------|-----------|-----------|------------|
| DTF14 | Turkey Feather, 14" | 12 | 0.85 | 1.5 |
| DOF13-BROWN | Ostrich Feather, 13" Brown | 12 | 0.28 | 1.8 |
| DOF14-BROWN | Ostrich Feather, 14" Wood handle | 12 | 0.28 | 1.8 |
| DOF20-BLACK | Ostrich Feather, 20" Black | 12 | 0.62 | 2.8 |
| DOF20-GRAY | Ostrich Feather, 20" Gray | 12 | 0.62 | 2.8 |
| DOF24-BROWN | Ostrich Feather, 24" Brown | 12 | 1.30 | 3.9 |
| DOF28-BLACK | Ostrich Feather, 28" Black | 12 | 1.30 | 3.6 |
| DOF28-GRAY | Ostrich Feather, 28" Gray | 12 | 1.30 | 3.8 |
| DOF31-BROWN | Ostrich Feather, 31" Brown | 12 | 1.30 | 4.3 |
| DOF-RET14 | Ostrich Feather, Retractable, 14" | 12 | 0.85 | 1.5 |



Synthetic Dusters

An economical alternative to Lambswool, synthetic Polywool is non-allergenic and washable. The extendable duster is great for hard-to-reach areas.

| ITEM NO. | DESCRIPTION | CASE PACK | CASE CUBE | WEIGHT LBS |
|----------|-------------------------------------|-----------|-----------|------------|
| PSD23 | 23" Synthetic Duster, Multi-purpose | 12 | 0.61 | 4.3 |
| PSD51 | 51-82" Extendable Synthetic Duster | 12 | 0.76 | 9.1 |



Lambswool Dusters

Lambswool dusters quickly and easily lift fine dust particles without harming surfaces. When they become heavily soiled these dusters may be washed out and conveniently hung to dry by a hole in the handle. Available in various sizes and shipped in assorted colors.

| ITEM NO. | DESCRIPTION | CASE PACK | CASE CUBE | WEIGHT LBS |
|----------|------------------------------|-----------|-----------|------------|
| L16 | 16" Lambswool duster | 12 | 0.20 | 1.45 |
| L26 | 26" Lambswool duster | 12 | 0.28 | 2.15 |
| L3850 | 38"-50" Extendable lambswool | 12 | 0.34 | 2.95 |



CORE^e²

Microfiber cleaning systems

Complete, Organized, Reliable, Efficient, and Environmentally friendly

What is Microfiber?

Microfiber is very fine synthetic fiber composed of 80% polyester 20% polyamide (nylon) 100x finer than human hair. The fibers are split to create microscopic hooks and increase absorbency.

Split microfibers allow for more aggressive cleaning and removal of microscopic debris than conventional methods.

Many facilities can operate in a cleaner environment by using

microfiber cleaning products. Schools, healthcare facilities, and offices are all appropriate settings for the use of microfiber wet and dry pads.

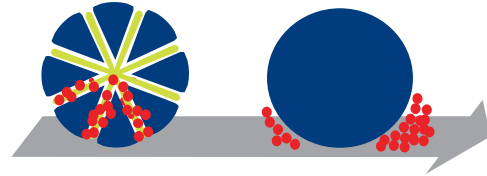
With rising concern over Indoor Air Quality, microfiber cleaning systems continue to be developed that keep cleaning for health as their foremost goal.



How does Microfiber work?

The dense construction of split microfibers creates a more efficient cleaning system through:

- Positively charged microfibers attract negatively charged dust
- Pulls liquid and soil particles away from surfaces
- Surface tension is broken, allowing the option of cleaning with water or with fewer chemicals.



Color Flag™ Coding System

Color-coding of cleaning equipment helps keep your building, employees and occupants safe and healthy by reducing the risk of using cleaning tools from one department in another.

Color-coded tools simplify the daily tasks for cleaning employees, and reduce the chance for mistakes in cleaning chemical mixing.

The CORE2 microfiber system from O'Dell is a safe, effective, and economical way to color-code your microfiber cleaning equipment.

Avoid cross contamination and keep supply management costs in check by using the full color range of products or our unique color flag system which allows for a single inventory with four color options.

Color Flags make color coding convenient. Simply remove the unwanted flags when bringing a pad into service, and your pad is color-coded for its department. Frames and handles come with snap-on plastic Color Flag rings.

Use the Color Flag rings to designate red, blue, yellow or green. All new Color Flag buckets come with water and chemical resistant vinyl labels that are easy to apply.

Manage your cleaning supplies with the CORE2 color coding system.

CORE2 BUCKETLESS MOPPING SYSTEM

Outperforms the competition at every level with more innovative features.



The powerful combination of O'Dell Microfiber Pads and the direct dispensing design of the Advantage saves time, chemical and water use, and labor cost. The direct application of uncontaminated cleaning solution reduces chemical use and virtually eliminates cross contamination and wastewater.

O'Dell's Advantage+ is compatible with the O'Dell products found on pages 31-35.

| ITEM NO. | DESCRIPTION | CASE PACK | CASE CUBE | WEIGHT LBS |
|------------|---------------------------|-----------|-----------|------------|
| BWMS-16 | Hook & loop | 1 | 0.65 | 4.0 |
| BWMS-16PKT | Pocket | 1 | 0.65 | 4.9 |
| BWMS-WMT | Compact Frame Hook & loop | 1 | 0.65 | 4.0 |

REPLACEMENT PARTS

| | | | | |
|----------|-----------------------------|---|------|-----|
| BWMS-VK | Valve kit | 1 | 0.25 | 1.0 |
| BWMS-T | Tether without cap | 1 | 0.13 | 1.0 |
| BWMS-TC | Tether and top bottle cap | 1 | 0.25 | 1.0 |
| BWMS-CV | Bottom bottle cap valve | 1 | 0.25 | 1.0 |
| BWMS-BTC | Bottle with tether and caps | 1 | 0.34 | 1.0 |

HANDY MOP

| | | | | |
|--------|-----------------------|----|------|-----|
| SLMHMP | 5 x 12" Spun loop pad | 12 | 0.41 | 2.0 |
| WMT | Wall mop tool | 12 | 0.34 | 5.4 |



CORE2 BUCKETLESS MOP KITS



Advantage+ Pocket Starter Kit

For the Healthcare conscious custodian, this Advantage+ kit comes with a pocket frame, and four pocket spun loop microfiber pads. The pocket attachment allows for hands free removal of the soiled pad, reducing the risk of cross contamination.

BWMS-16-PKTKIT-A4 includes 4 blue knitted pocket pads (MFM185B-PKT)

BWMS-16-PKTKIT-B4 includes 4 spun loop color flag pocket pads (SLM185PKT)

BWMS-16-PKT-KIT-C4 includes 4 spun loop color flag mesh pocket pads (SLM185MSH).



Advantage+ Hook and Loop Starter Kit

Advantage Plus with a hook and loop frame, and 4 premium microfiber wet pads.

BWMS-16-KITA4 includes 4 blue knitted color flag pads (MFM185B-CF)

BWMS-16-KITB4 includes 4 spun loop color flag pads (SLM185)



| ITEM NO. | DESCRIPTION | CASE PACK | CASE CUBE | WEIGHT LBS |
|-------------------|----------------------------|-----------|-----------|------------|
| BWMS-16-FLP-KIT4 | Flip mop | 1 | 1.54 | 7.55 |
| BWMS-16-PKTKIT-A4 | Blue knitted pocket | 1 | 1.54 | 7.45 |
| BWMS-16-PKTKIT-B4 | Spun loop pocket | 1 | 1.54 | 7.35 |
| BWMS-16-PKTKIT-C4 | Spun loop mesh pocket | 1 | 1.54 | 7.60 |
| BWMS-16-KITA4 | Blue knitted hook and loop | 1 | 0.53 | 5.35 |
| BWMS-16-KITB4 | Spun Loop hook and loop | 1 | 1.54 | 7.15 |

Ergonomic 360 degree rotating handle cap reduces user fatigue and provides smooth figure eight application.

Ball trigger Works like a pen. Click-on/click-off reduces hand fatigue. No need to continually squeeze the trigger.

Large, easy-to-fill, tethered cap features an integrated hanger to store multiple bottles on maid's cart.

Sliding handle hook makes storage simple.

Top and bottom caps and removable bottle make cleaning easy.

32 Ounce capacity bottle includes fill level graduations in ml and ounces.

Chemical Identifier labels are bilingual and provided with every unit.

Viton seals ensure confident operation with a variety of heavy duty chemicals.

Secure ball-valve guarantees a positive on and positive off flow control unlike competitors with unreliable pinch valves.

Handle end constructed to accept pinch style, hook-and-loop, yoke style, and collapsing frame configurations to compliment any O'Dell program the distributor is stocking.

Heavy duty frame and 360° swivel

Why use Microfiber Spun Loop pads?

- High loop pile gives higher absorption than woven pads
- Cleans uneven surfaces
- Loops capture large particles
- Loop pile gives greater saturation to insure proper dwell times for cleaning chemicals
- Durable up to 500 washes (200 washes with diluted chlorine bleach)
- Clean more floor space with one pad



Spun Loop Handy Mop Pad

- Clean hard flat surfaces like tables; desks; and cabinets with the handy mop (SLMHMP) and Trowel (HMT).
- Clean Walls and other hard-to-reach surfaces with the Handy Mop Pad and the Wall Mop Tool (WMT). See page 35 for handle selections.

| ITEM NO. | SIZE | DESCRIPTION | CASE PACK | CASE CUBE | WEIGHT LBS |
|----------|----------|--------------------|-----------|-----------|------------|
| SLMHMP | 5 x 12" | Gray w/color flags | 120* | 3.67 | 29.75 |
| HMT | 3¾ x 9½" | Hand Tool | 12 | 0.34 | 6.7 |
| WMT | 3¾ x 9" | Wall Tool | 12 | 0.34 | 5.4 |

* 10 packs of 12



HMT



WMT



SLMHMP



SPUN LOOP WET PAD Hook & Loop

Color flag coding meets HACCP compliance with just one pad (not four) **or** a solid color pad - your preference. Fits hook-and-loop frame (AMFMF-16). See page 35 for handle and frame selections. Size: 5" x 18"

| ITEM NO. | DESCRIPTION | CASE PACK | CASE CUBE | WEIGHT LBS |
|----------|--------------------|-----------|-----------|------------|
| SLM185 | Gray w/color flags | 120* | 5.64 | 45.0 |

* 10 packs of 12



SPUN LOOP WET PAD Mesh Pocket

Color flag coding meets HACCP compliance with just one pad (not four) **or** a solid color pad - your preference. Fits pocket frames. See page 35 for handle and frame selections. Size: 5" x 18"

| ITEM NO. | DESCRIPTION | CASE PACK | CASE CUBE | WEIGHT LBS |
|-----------|--------------------|-----------|-----------|------------|
| SLM185MSH | Gray w/color flags | 120* | 5.67 | 41.75 |

* 10 packs of 12

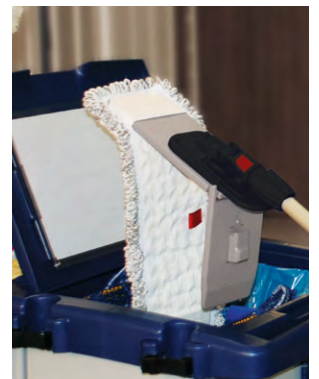


SPUN LOOP WET PAD Polyester Pocket

Color flag coding meets HACCP compliance with just one pad (not four) **or** a solid color pad - your preference. Fits pocket frames. See page 35 for handle and frame selections. Pocket pad allows hands-free removal from the frame. Size: 5" x 18"

| ITEM NO. | DESCRIPTION | CASE PACK | CASE CUBE | WEIGHT LBS |
|-----------|--------------------|-----------|-----------|------------|
| SLM185PKT | Gray w/color flags | 120* | 5.67 | 40.5 |

* 10 packs of 12





EchoLine® Microfiber Wet Pads



Color Flag Coding - HACCP compliance with one pad, not four. O'Dell Echoline microfiber wet pads have the highest fabric weight in our industry. Heavy duty hook and loop or polyester pocket back. Fits standard 18" frames. **MFM185B-CF** uses frame (AMFMF-16). See page 35 for handle selections. Inner microfiber layer gives greater saturation to insure proper dwell time and split microfiber captures particles. Lasts hundreds of launderings.

| ITEM NO. | DESCRIPTION | CASE PACK | CASE CUBE | WEIGHT LBS |
|------------|-------------|-----------|-----------|------------|
| MFM185B-CF | 5 x 18" | 120* | 4.24 | 35.0 |

* 10 packs of 12

MFM185B-CF



Power Scrub Microfiber Pad

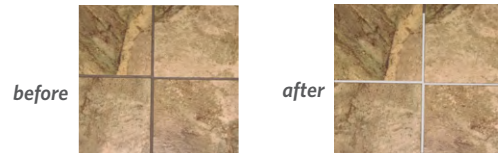
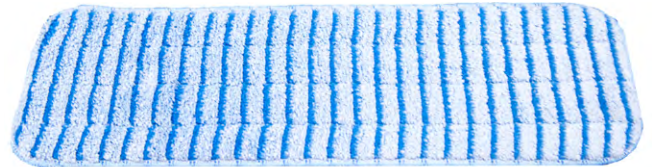
When a floor requires more persuasive cleaning, use the Power Scrub microfiber pad with scrubbing fibers to help remove stains on most hard surfaces. Good for cleaning stone and ceramic tile, and power-lifting stains from grout lines. Use in heavy traffic areas like lobbies, restrooms and foodservice areas, to lift stubborn grime from recessed areas in your tile floors.

- Scrubbing fibers integrated into pad
- Unique 'smooth-glide' design provides less drag across floor surfaces
- Uses frame (AMFMF-16). See page 35 for handle selections.

| ITEM NO. | DESCRIPTION | CASE PACK | CASE CUBE | WEIGHT LBS |
|----------|-------------|-----------|-----------|------------|
| MFSP185B | 5 x 18" | 120* | 2.84 | 24.0 |

* 10 packs of 12

MFSP185B



Microfiber Flat Wet Mop Pad

5 x 18" wet pad fits standard 18" hook and loop frames. **EMFM185** has a 6mm foam core. **PMF185B** has a durable nonwoven core.

| ITEM NO. | DESCRIPTION | CASE PACK | CASE CUBE | WEIGHT LBS |
|----------|-------------|-----------|-----------|------------|
| EMFM185 | Economy | 120* | 2.69 | 17.6 |
| PMF185B | Premium | 120* | 3.11 | 28.9 |

* 10 packs of 12

EMFM185



PMF185B



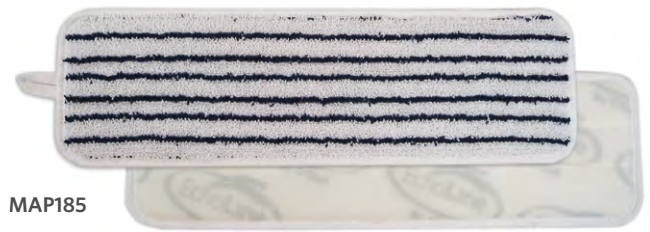
Microfiber Finish Pads

Microfiber Applicator (MAP) - finishing pads that are smooth and streak-free at an economical price. Offers superior sewn construction and ultra-fine microfibers, giving a super-soft pad that ghosts over surfaces without streaking, but which is durable enough to withstand repeated launderings.

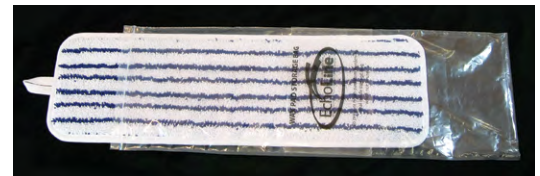
- Fits standard 18" & 24" hook and loop frames
- MAP185 uses frame (AMFMF-16) and handle (TH-BF60) and MAP245 uses frame (AMFMF-22) and handle (TH-BF60)

Use with our Finishing/Wringing bucket (MBMF6B)

| ITEM NO. | DESCRIPTION | CASE PACK | CASE CUBE | WEIGHT LBS |
|----------|-------------|-----------|-----------|------------|
| MAP185 | 5 x 18" | 12 | 0.29 | 2.1 |



MAP185



Each pad comes packaged in a resealable storage bag
Lengthen the lifespan of your finish pad by storing in the resealable bag between uses and between launderings

EchoFiber® Loop Mops

EchoFiber® Loop Mops combine the cleaning power of split microfiber with convenience - they fit traditional handles, bucket, and wringers! Advanced microfiber synthetic loops are bound by a tail-band. EchoFiber mops will not tangle, leave strings, or snag. These mops are lightweight, easy to use, easy to wring, and fast drying. They last hundreds of launderings. Available in 5" Wide Band or Narrow Band.

| WIDE BAND | NARROW BAND | SIZE | COLOR | CASE PACK | CASE CUBE | WEIGHT LBS |
|-----------|-------------|------|-------|-----------|-----------|------------|
| MWTM-B | — | M | Blue | 12 | 1.09 | 8.0 |
| MWTM-G | MWTM-GNB | M | Green | 12 | 1.09 | 8.0 |
| MWTM-R | — | M | Red | 12 | 1.09 | 8.0 |
| MWTL-B | MWTL-BNB | Lg. | Blue | 12 | 1.77 | 14.3 |
| MWTL-G | MWTL-GNB | Lg. | Green | 12 | 1.77 | 14.3 |
| MWTL-R | — | Lg. | Red | 12 | 1.77 | 14.3 |



wide band



narrow band

- Superior strength
- Immediate absorption
- Micro-level cleaning
- Laundered 100s of cycles
- Lint free
- Easy glide performance



After 300 washes



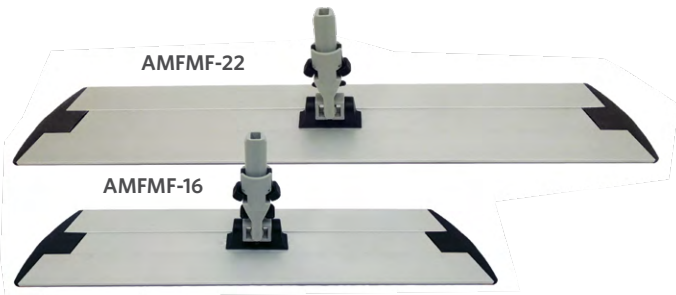


Echoline® Microfiber Handle & Frames

Our microfiber hardware is made of lightweight yet durable aluminum. You may choose from a lockable telescopic handles that extend from 34 - 60 inches, or a solid 60" non telescopic style. Simply slide frame connector into the telescopic handle and it locks into place with an easy-to-open push button. Frames have hook and loop strips which can be used with wet or dry microfiber pads. Frame swivels to provide full 360° range of motion, or can be locked in place. Frames are available in 16-60 inch sizes. The 16" and 22" frames are lighter, and have exchangeable hook and loop strips for longer use. The channeled aluminum frame provides greater support for larger pads and is available in 34 or 46". Comes with Color Flags.

| ITEM NO. | DESCRIPTION | CASE PACK | CASE CUBE | WEIGHT LBS |
|----------|-----------------------------------|-----------|-----------|------------|
| AMFMF-16 | 16" Alum. Frame for 18" Pad | 12 | 0.47 | 8.4 |
| AMFMF-22 | 22" Alum. Frame for 24" Pad | 12 | 0.82 | 13.2 |
| TH-BF60 | 34-60" Lockable telescopic handle | 6 | 0.49 | 5.38 |
| TH-MF60 | 34-60" Lockable telescopic handle | 12 | .625 | 1.10 |

Handles come with 4 color flag snap-on sleeves



No-pinch, quick release buttons

Comes with complete color flag set.



TH-BF60



Comfort grips for easy operation, reducing worker fatigue

TH-MF60



Comfort grip with swivel hang cap



Microfiber Care Instructions

for best results:

- Wash in laundry net.
- Use a front load washer. If using a top load washer with an agitator, select the delicate cycle.
- Do not use chlorine bleach or strong alkaline detergent.
- Launder microfiber wet pads, finish pads, and conventional mops separately.
- Do not use fabric softener.
- Dry below 140° F, avoid over-heating the pads and remove promptly from dryer when finished.

Laundry Net

Specially designed polyester leno weave mesh bags for laundering mops and pads. Laundering pads in a mesh bag will minimize tangling or contamination. Comes with a slip lock closure and I. D. tag. Available in blue or white.

| ITEM NO. | COLOR | SIZE | CASE PACK | CASE CUBE | WEIGHT LBS |
|-----------|-------|-----------|-----------|-----------|------------|
| L2436W-ID | white | 24" x 36" | 12 | 0.84 | 11.0 |
| L2436B-ID | blue | 24" x 36" | 12 | 0.84 | 11.0 |
| L1830W-ID | white | 18" x 30" | 12 | 0.84 | 6.0 |
| L1824W-ID | blue | 18" x 24" | 12 | 0.84 | 6.0 |





Microfiber Charging Bucket

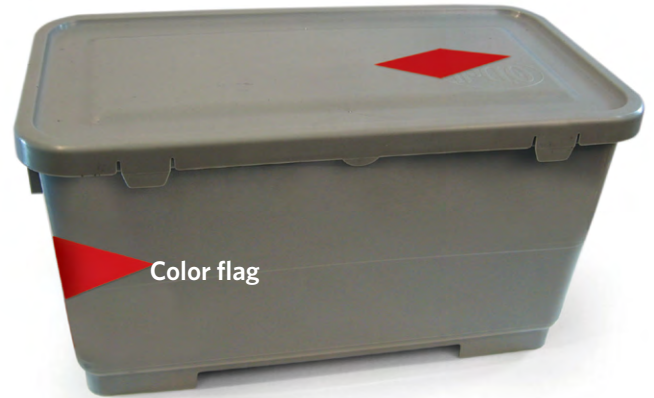
Streamline your microfiber system with presoak charging buckets. To prepare sets of pads or cloths ahead of time, mix cleaning solution, and add solution per the solution chart.

Stack pads or cloths in the bucket, face pads down, pour in solution, seal the lid, and invert. Pads/cloths will absorb cleaning solution in 10-15 minutes. 6 Gallon buckets hold up to 20 pads and 3.5 gallon buckets hold up to 40 cloths.

6 Gallon buckets use with the following: MFM185, MFM185-PKT, SLM185, SLM185PKT, and SLM185MSH.

3.5 Gallon buckets use with the following: MFK series cloths, and SLMHMP pads.

| ITEM NO. | COLOR | SIZE | CASE PACK | CASE CUBE | WEIGHT LBS |
|----------|--------------------|-------|-----------|-----------|------------|
| CBMF6GY | Gray w/color flags | 6 gal | 1 | 2.37 | 6.4 |



CBMF6GY

Gray bucket comes with complete color flag set and wheels.

SOLUTION CHART

| PAD/CLOTH | CLEANING SOLUTION |
|-------------|-------------------|
| MFM185B-CF | 12oz. /pad |
| MFM185B-PKT | 13oz. /pad |
| SLM185 | 14oz. /pad |
| SLM185PKT | 14oz. /pad |
| SLM185MSH | 14oz. /pad |
| MFK | 8oz./cloth |
| SLMHMP | 7oz./pad |

1. Add cleaning solution
2. Add microfiber pads or cloths, face down in bucket
3. Snap on bucket cover and invert on top to saturate pads or cloths



CORE2 CHARGING BUCKET STARTER KITS

Want to make the switch to microfiber, but not sure where to begin? Starter kits give you the essentials for your microfiber cleaning collection. Kits include a microfiber charging bucket, a telescopic handle, frame, 12 premium 18" microfiber pads, and 12 microfiber cleaning cloths.

Hook and Loop Starter Kit

- 1 Microfiber charging bucket (CBMF6)
- 1 Telescopic handle (TH-BF60)
- 1 Standard hook & loop frame (AMFMF16)
- 12 Premium 18" microfiber pads
 - Kit A includes (MFM185B-CF)
 - Kit B includes (SLM185)
- 12 Blue microfiber cleaning cloths (MFK-B)

CBMF6GY-KITA12



Spun Loop Pocket Starter Kit

- 1 Microfiber charging bucket (CBMF6)
- 1 Telescopic handle (TH-BF60)
- 1 Standard pocket frame (PMFPKT)
- 12 Premium 18" spun loop pocket microfiber pads (SLM185-PKT)
- 12 Microfiber cleaning cloths

CBMF6GY-PKTKITB12



Mesh Spun Loop Pocket Starter Kit

- 1 Microfiber charging bucket (CBMF6)
- 1 Telescopic handle (TH-BF60)
- 1 Standard pocket frame (PMFPKT)
- 12 Premium 18" spun loop pocket microfiber pads (SLM185-MSH)
- 12 Microfiber cleaning cloths

CBMF6GY-PKTKITC12



| ITEM NO. | DESCRIPTION | CASE PACK | CASE CUBE | WEIGHT LBS |
|-------------------|-----------------------------------|-----------|-----------|------------|
| CBMF6GY-KITA12 | Hook and Loop Starter Kit A | 1 | 2.90 | 12.60 |
| CBMF6GY-KITB12 | Hook and Loop Starter Kit B | 1 | 2.90 | 13.15 |
| CBMF6GY-PKTKITB12 | Spun Loop Pocket Starter Kit | 1 | 2.90 | 13.40 |
| CBMF6GY-PKTKITC12 | Mesh Spun Loop Pocket Starter Kit | 1 | 2.90 | 13.60 |

Touchless Mop System

The Touchless Mop System is the smartest patented microber mopping tool for easy touch-free pad pick-up and touch-free pad POP off!

The innovative pump action handle ejects the used microber pad from the mop head for convenient collection and reduces the risk of contamination.

The Touchless Mop System makes cleaning easier and more efficient, leaving the dirty work behind.

- Lightweight and agile, with a full 360° swivel head
- Four hook fields hold microfiber pads in place
- Works with large 16 or 18" microfiber pads
- Telescopic Handle extends from 49-63" and features Color Flags for HACCP Compliance

| ITEM NO. | DESCRIPTION | CASE PACK | CASE CUBE | WEIGHT LBS |
|----------|---------------------------------|-----------|-----------|------------|
| TFMH-15 | Touchless Microfiber Mop System | 4 | 2.15 | 8.93 |

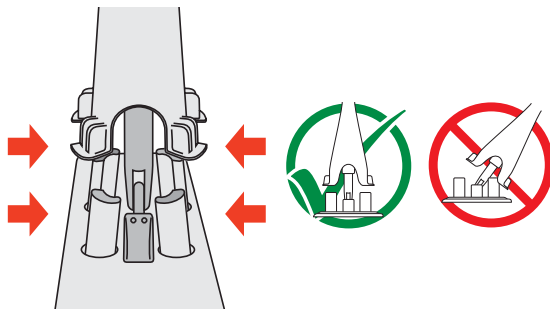


Instructions

To remove the used microfiber pad from your new Touchless Mop System follow these steps:

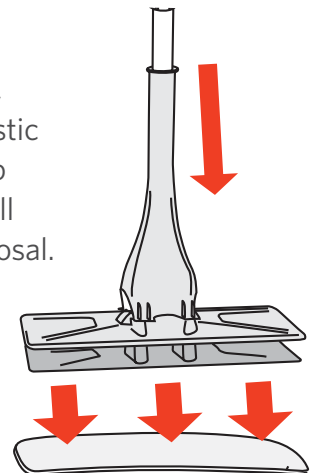
STEP 1

After cleaning with your Touchless Mop system align the plastic housing on the handle to the 4 contact posts on the mop head.



STEP 2

Once the housing is aligned to the 4 posts, push down on the plastic housing, using a pump action, and the pad will POP off for quick disposal.



Microfiber Dry Dust Pads with Fringe

Microfiber dry dusting pads have a positive electrostatic charge that traps fine particles and keeps them until laundered. Fringe traps large particles like a standard dust mop. Available in 18, 24, 36, 48, and 60 inch sizes. Fringed microfiber pads cover more surface area than plain dust pads. Lasts hundreds of launderings.

Slot pocket style fits standard dust mop wire frames and clip-on handles (ex: MFD185G-FSP uses frame # F185 and handle # H600).

| ITEM NO. | SIZE | CASE PACK | CASE CUBE | WEIGHT LBS |
|----------|------|-----------|-----------|------------|
|----------|------|-----------|-----------|------------|

Slot Pocket Backing

| | | | | |
|-------------|---------|---|------|------|
| MFD185G-FSP | 5 x 18" | 6 | 0.29 | 2.55 |
| MFD245G-FSP | 5 x 24" | 6 | 0.43 | 3.25 |
| MFD365G-FSP | 5 x 36" | 6 | 0.43 | 4.45 |
| MFD485G-FSP | 5 x 48" | 6 | 0.75 | 5.50 |
| MFD605G-FSP | 5 x 60" | 6 | 0.92 | 6.20 |

Hook and Loop Backing

| | | | | |
|-----------|---------|----|------|-----|
| MFD185G-F | 5 x 18" | 12 | 0.46 | 3.0 |
| MFD245G-F | 5 x 24" | 12 | 0.61 | 4.0 |
| MFD365G-F | 5 x 36" | 12 | 0.87 | 4.2 |
| MFD485G-F | 5 x 48" | 12 | 1.23 | 4.6 |

SLOT POCKET



HOOK & LOOP



Spun Loop Dust Mop Refill

Microfiber dry dusting pads have a positive electrostatic charge that traps fine particles and keeps them until laundered. The heavy debris pick-up power of a fringed dry pad is perfected with the spun loop dust mop. Lasts hundreds of launderings. 100% Looped fringe construction provides maximum dust pick-up. Available in 18, 24, 36, 48, 60, and 72 inch sizes.

Fits standard dust mop wire frames and clip-on handles (ex: SLD185GSP uses frame # F185 and handle # H600)

| ITEM NO. | SIZE | CASE PACK | CASE CUBE | WEIGHT LBS |
|-----------|---------|-----------|-----------|------------|
| SLD185GSP | 5 x 18" | 12 | 1.08 | 4.90 |
| SLD245GSP | 5 x 24" | 12 | 1.33 | 6.50 |
| SLD365GSP | 5 x 36" | 12 | 1.47 | 9.70 |
| SLD485GSP | 5 x 48" | 12 | 1.91 | 12.10 |
| SLD605GSP | 5 x 60" | 12 | 2.40 | 14.40 |
| SLD725GSP | 5 x 72" | 12 | 2.79 | 17.00 |

SPUN LOOP REFILL





Microfiber Dusting Tools

MicroFeather™ dusting tools feature very fine split microfiber. Soft feathers of microfiber trap and store minute dust particles and will not scratch delicate surfaces.

- **MicroFeather duster (MFD23)** outperforms ostrich, lambswool, and polywool dusters. Flexible head fits any dusting job. Threaded to accept extension handle (TH-BM60). Available in white only.
- **18" MicroFeather Flexible Duster (MFD18)** performs like our MicroFeather duster, with a solid handle. Assorted colors.
- **11" MicroFeather Mini Duster (MFD11)** Convenient size for home and office use. Assorted colors.
- **Flexible Wand Duster (MFD-H)** For hard-to-reach areas, the Flexible Wand Duster has a threaded handle which fits standard extension handles (TH-BM60). Microfiber head (MFD-R20) is launderable.
- **Spun Microfiber Duster (SLD20)** fits the Flexible Wand Duster. Picks up heavy debris and fine particles, trapping them until laundering. Lasts hundreds of launderings.
- **Spun Microfiber Dusting Mitt (SLD-MITT)** uses the same material as our spun loop dustmops, for heavy debris clean up. Lasts hundreds of launderings. Use with overhead duster (FHDT).

| ITEM NO. | DESCRIPTION | CASE PACK | CASE CUBE | WEIGHT LBS |
|----------|-------------------------------------|-----------|-----------|------------|
| MFD23 | 19" Microfeather Duster | 24 | 0.61 | 7.6 |
| TH-BM60 | 3-5' Telescopic Handle | 12 | 0.91 | 10 |
| MFD-H | Duster, Flexible Wand, Tool Only | 12 | 0.44 | 4.7 |
| MFD-R20 | Duster, Replacement Sleeve, 20" | 50 | 1.37 | 8.15 |
| SLD20 | Spun Microfiber Dusting Sleeve, 20" | 12 | 0.78 | 5.5 |
| SLD-MITT | Spun Microfiber Dusting Mitt | 12 | 0.68 | 4.0 |

TH-BM60



To hand wash microfiber dusters: Wash head with warm soapy water, rinse, towel dry, then spin between hands to fluff. Hang to dry.



MFD23



MFD-R20



MFD-H



SLD20



SLD-MITT



BioFiber® is the perfect disposable dusting sheet for your green cleaning program.

- **Effective** - Outperforms the “famous” disposable dusting sheets
- **Economical** - Attracts 99% of bacteria without chemicals
- **Energetic** - Draws and locks dust by building an electrostatic charge
- **Disposable** - In landfill or compost bin- breaks down in 4-6 weeks
- **Biodegradable**- meets ASTM D6400-99 biodegradability standard

To see a video product demo, visit www.odellcorp.com

| ITEM NO. | DESCRIPTION | CASE PACK | CASE CUBE | WEIGHT LBS |
|----------|----------------------------------|-----------|-----------|------------|
| BF248 | 8 x 24" dusting sheets | 200 | 1.15 | 4.9 |
| BF100 | 100 sheet roll | 4 | 2.69 | 11.0 |
| SCF244 | 4 x 24" padded spring clip frame | 6 | 0.97 | 6.8 |
| SCF484 | 4 x 48" padded spring clip frame | 6 | 2.37 | 13.6 |
| TH-BF60 | 40-60" telescopic handle | 6 | 0.38 | 3.0 |



Breaks down into less than 1oz. inert material



Spring clip snaps quickly into place

Microfiber Cleaning Cloths

These make excellent cleaning & polishing cloths for foodservice and restroom areas. They hold 8X their weight in cleaning solution, and leave surfaces lint and streak-free.

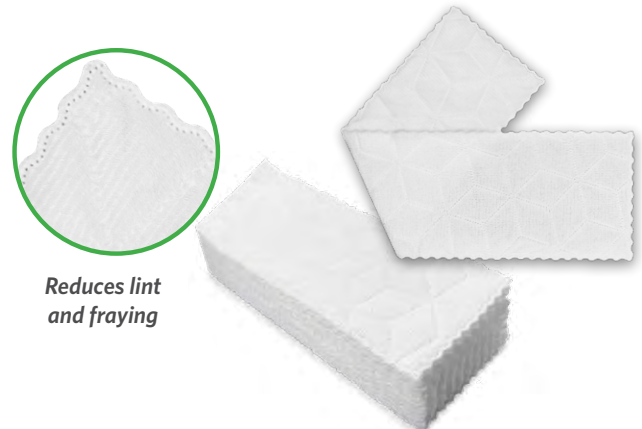
| ITEM NO. | DESCRIPTION | CASE PACK | CASE CUBE | WEIGHT LBS |
|---|----------------|--------------------|-----------|------------|
| Knitted General Purpose Cloth (250g/m²) | | | | |
| MFK-B | 16x16 - Blue | 240 (20 pks of 12) | 2.60 | 23.0 |
| MFK-G | 16x16 - Green | 240 (20 pks of 12) | 2.60 | 23.0 |
| MFK-R | 16x16 - Red | 240 (20 pks of 12) | 2.60 | 23.0 |
| MFK-Y | 16x16 - Yellow | 240 (20 pks of 12) | 2.60 | 23.0 |
| Woven Glass/Mirror Cloth | | | | |
| MFW-B | 16x16 - Blue | 240 (20 pks of 12) | 1.42 | 28.0 |



Single Use Floor Pad

Engineered to clean up to 400 sq. ft. Proprietary layered construction to uniformly disperse chemicals across the entire area of coverage. Sanitizer safe and non-quat binding. Ultrasonic welded edges reduce linting along rough surfaces. Low friction cleaning reduces body stress & strains. **95% recycled content!**

| ITEM NO. | DESCRIPTION | CASE PACK | CASE CUBE | WEIGHT LBS |
|----------|--------------------|-----------|-----------|------------|
| DMF195 | 5" x 19" (13x48cm) | 150 | | |



Reduces lint and fraying

Handles, Squeegees, & Floor Care Accessories



Color Coded Fiberglass Handles

Excellent for push brooms, street brooms and squeegees, these durable handles come with a black nylon threaded tip. Color choices meet the USDA's hazard analysis critical control points (HACCP) to prevent cross contamination.

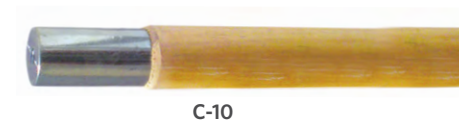
| ITEM NO. | DESCRIPTION | SIZE | CASE PACK | CASE CUBE | WEIGHT LBS |
|----------|---------------------------------------|---------|-----------|-----------|------------|
| HFR | Color Coded Handle, Red Fiberglass | 1 x 60" | 12 | 0.78 | 14 |
| HFY | Color Coded Handle, Yellow Fiberglass | 1 x 60" | 12 | 0.78 | 14 |
| HFB | Color Coded Handle, Blue Fiberglass | 1 x 60" | 12 | 0.78 | 14 |
| HFBK | Black Fiberglass Handle | 1 x 60" | 12 | 0.78 | 14 |



Industrial Flat Handles

Metal threaded connector embedded into the handle's tip accepts a standard industrial flat molded cap.

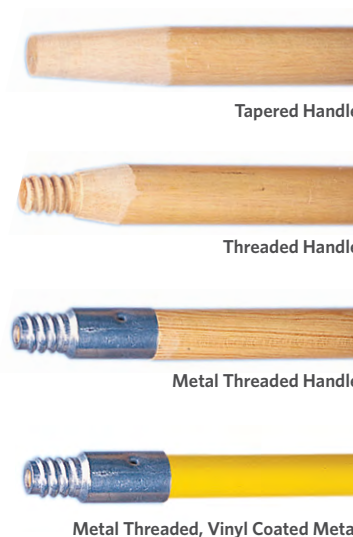
| ITEM NO. | DESCRIPTION | SIZE | CASE PACK | CASE CUBE | WEIGHT LBS |
|----------|--------------------------|-------------|-----------|-----------|------------|
| C-10 | Industrial Flat Wood 54" | 1 1/8 x 54" | 12 | 0.55 | 10 |
| C-11 | Industrial Flat Wood 60" | 1 1/8 x 60" | 12 | 0.61 | 12 |



Threaded and Tapered Handles

Wood and tapered handles are made of durable hardwood. Tapered end allows fast and easy changes. Wood and metal threaded have standard threads to fit multiple products. Handle number 0160M is a metal threaded tip on vinyl coated metal handle.

| ITEM NO. | DESCRIPTION | SIZE | CASE PACK | CASE CUBE | WEIGHT LBS |
|----------|------------------------------|--------------|-----------|-----------|------------|
| 0754 | Wood Tapered | 1 5/16 x 54" | 12 | 0.5 | 11 |
| 0760 | Wood Tapered | 1 5/16 x 60" | 12 | 0.56 | 12 |
| 0772 | Wood Tapered | 1 5/16 x 72" | 12 | 0.67 | 13 |
| 0854 | Wood Tapered | 1 1/8 x 54" | 12 | 0.55 | 13 |
| 0860 | Wood Tapered | 1 1/8 x 60" | 12 | 0.61 | 14 |
| 0872 | Wood Tapered | 1 1/8 x 72" | 12 | 0.73 | 15 |
| 0354 | Wood Threaded | 1 5/16 x 54" | 12 | 0.5 | 11 |
| 0360 | Wood Threaded | 1 5/16 x 60" | 12 | 0.56 | 12 |
| 0554 | Wood Threaded | 1 1/8 x 54" | 12 | 0.55 | 13 |
| 0660 | Wood Threaded | 1 1/8 x 60" | 12 | 0.61 | 14 |
| 0572 | Wood Threaded | 1 1/8 x 72" | 12 | 0.73 | 15 |
| 0348 | Metal Threaded | 1 5/16 x 48" | 12 | 0.44 | 10 |
| 0454 | Metal Threaded | 1 5/16 x 54" | 12 | 0.5 | 11 |
| 0160 | Metal Threaded | 1 5/16 x 60" | 12 | 0.56 | 12 |
| 0472 | Metal Threaded | 1 5/16 x 72" | 12 | 0.67 | 13 |
| 0960 | Metal Threaded | 1 1/8 x 60" | 12 | 0.61 | 14 |
| 0672 | Metal Threaded | 1 1/8 x 72" | 12 | 0.73 | 15 |
| 0160M | Metal Threaded, Metal Handle | 1 5/16 x 60" | 12 | 0.56 | 12 |



Straight Rubber Squeegee

This black rubber squeegee is for medium duty jobs. It features non-marking 2" blades, a galvanized metal frame with lock strips and accepts standard tapered handles.

| ITEM NO. | DESCRIPTION | SIZE | CASE PACK | CASE CUBE | WEIGHT LBS |
|----------|--------------------------|------|-----------|-----------|------------|
| SQF-24 | Straight rubber squeegee | 24" | 6 | 1 | 16 |



Floor Squeegee

Color choices meet the USDA's hazard analysis critical control points (HACCP) to prevent cross contamination. 18-24", non-marking blades are ideal for removal of liquids and light soil on uneven surfaces. Leaves floor dry to the touch. Made of sturdy, non corrosive plastic. Frame accepts standard threaded handle.

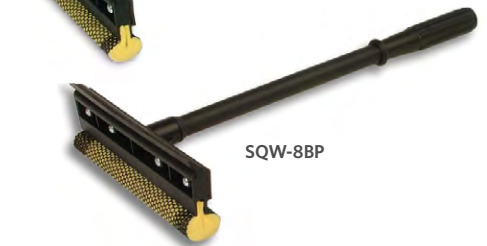
| ITEM NO. | DESCRIPTION | SIZE | CASE PACK | CASE CUBE | WEIGHT LBS |
|----------|------------------------|------|-----------|-----------|------------|
| SQF-18PW | Floor Squeegee, White | 18" | 12 | 0.84 | 6.2 |
| SQF-18PY | Floor Squeegee, Yellow | 18" | 6 | 0.42 | 3.1 |
| SQF-18PR | Floor Squeegee, Red | 18" | 6 | 0.42 | 3.1 |
| SQF-18PG | Floor Squeegee, Green | 18" | 6 | 0.42 | 3.1 |
| SQF-18PB | Floor Squeegee, Blue | 18" | 6 | 0.42 | 3.1 |
| SQF-24PW | Floor Squeegee, White | 24" | 6 | 0.58 | 3.4 |
| SQF-24PY | Floor Squeegee, Yellow | 24" | 6 | 0.58 | 3.4 |
| SQF-24PR | Floor Squeegee, Red | 24" | 6 | 0.58 | 3.4 |
| SQF-24PG | Floor Squeegee, Green | 24" | 6 | 0.58 | 3.4 |
| SQF-24PB | Floor Squeegee, Blue | 24" | 6 | 0.58 | 3.4 |



Auto Squeegee

Available with 13" long molded black plastic handle or 20" red metal handle. 8" sponge and blade. Sponge is covered by heavy duty mesh.

| ITEM NO. | DESCRIPTION | SIZE | CASE PACK | CASE CUBE | WEIGHT LBS |
|----------|------------------------------------|------|-----------|-----------|------------|
| SQW-8BP | Auto Squeegee Black Plastic Handle | 8" | 12 | 0.47 | 7.5 |
| SQW-8RM | Auto Squeegee Red Metal Handle | 8" | 12 | 0.63 | 7 |



Carpet Bonnet

Looped construction with scrubbing strips on both sides. Low profile, double faced, high quality bonnet.

| ITEM NO. | SIZE | CASE PACK | CASE CUBE | WEIGHT LBS |
|----------|------|-----------|-----------|------------|
| G19 | 19" | 6 | 1.62 | 11 |



O'Dell offers many different options for the products that we manufacture. A very simple system of item number suffixes is used in designating the option that you may desire. Below you will find a listing of options available from O'Dell for your convenience.

WB (Wide Band)

example: 5320FWB

Available on all wet mops that do not come standard with this option. We use 5" vinyl coated nylon mesh on all wide band mops. (15¢ ea. up charge for wide band where not standard)



SP (Scrub Pad)

example: 5000M/White SP

Available on all mops manufactured by O'Dell. We use a 5" x 5" black scrub pad for aggressive removal of marks and debris. (30¢ ea. upcharge for scrub pad mops)



7", 8" & 9" Head Band

example: 4200L/Green9

Available on all wet mops that do not come standard with this option. We use vinyl coated nylon mesh or woven polyester cloth on expanded band width mops. Add desired width to end of part number. (25¢ ea. for 7", 35¢ ea. for 8", and 45¢ ea. for 9")



TB (Tail Band)

example: 5516FTB

Available on most mopheads manufactured by O'Dell that do not come standard with this option. Tailbands provide even spread for streak-free enhanced area coverage with each swipe of the mop. As a standard all tailbanded mops have looped-ends as an added benefit. (80¢ ea. upcharge for tailbanded mops where not standard)



NB (Narrow Band) NBM (Mesh Narrow Band)

example: 400M/Blue NB

Available on all wet mops that do not come standard with this option. We use 1 1/4" starched polyester canvas tape as well as vinyl coated nylon mesh on narrow band mopheads. (15¢ ea. deduction for narrow band where not standard)



2TB (Double Tailband)

example: 2000XL/Blue-2TB

Available on all loop mops from O'Dell. The second tailband ensures a tangle free product as well as adding longevity to the mophead. As with a single tailbanded mop the ends are looped as an added value. (.40ea upcharge to add second tailband)



IF (Industrial Flat)

example: 2320FIF

Available on all wet mops manufactured by O'Dell. We use a plastic injection molded cap which incorporates a metal threaded stud that accepts standard industrial flat handles (C-10, C-11, C-25). (50¢ ea. up charge on all industrial flats).



CE (Cut-End)

example: 900M/OrangeCE

Available on all mopheads from O'Dell that do not come standard with this option. The ends may be cut on standard loop mops however, the tailband will remain in place. (no price changes)



TO (Twist-On)

example: 8000L/GreenTO

Available on all wet mops from O'Dell that do not come standard with this option. The plastic injection molded cap is threaded to accept any handle with standard acme threads. (40¢ ea. upcharge for twist-ons where not standard)



Tools from O'Dell may be purchased on an individual basis or as a kit. Kits can be custom packed to meet your specific needs. This may also include mopheads, push brooms, upright brooms, handles, as well as any other item available from O'Dell.

PURCHASE ORDER REVISION POLICY

Adding or deleting items, making quantity adjustments, or cancellation of an existing purchase order is allowed provided it is done **within 24 hours of our acknowledgment of receiving the original PO.**

If the 24 hour time period has expired then a new PO must be placed. If the new PO is received within 48 hours of the original PO then every attempt will be made to ship the two POs together. However, our ability to do so is dependent upon the specific products and the quantity ordered, so it is NOT guaranteed. If you would like for the two POs to ship together then understand that the original PO ship date will be delayed to the secondary PO ship date and we will need your approval to do so. Otherwise the original and secondary PO will ship independently of one another. It is important to note that if the secondary PO does not meet your prepaid requirements then freight will be added to the invoice.

MINIMUM ORDER QUANTITY

The minimum order quantity is \$1500.00. The minimum per product, per order for standard label is five cases and for private label 10 cases.

PREPAID FREIGHT MINIMUM

Standard prepaid freight is 500lbs. Standalone microfiber orders are prepaid on \$1500.00. If the order is mixed with microfiber and traditional products it must be at least 500 lbs to be prepaid regardless of the dollar amount.

CREDIT CARD POLICY

We accept Visa and MasterCard only. We do not accept debit cards. For all credit card payments a surcharge of 5% will be added to the invoice.



O'Dell Ware Shoals Facility



O'Dell HP Facility



The O'Dell Corporation

P. O. Box 540
13833 Indian Mound Road
Ware Shoals, South Carolina
29692

Tel: 864-861-2222
800-342-2843
Fax: 800-445-1533

email: info@odellcorp.com
www.odellcorp.com



Please recycle

