



DISASSEMBLING YOUR ODDCROFT™ MOSAIC LAMP



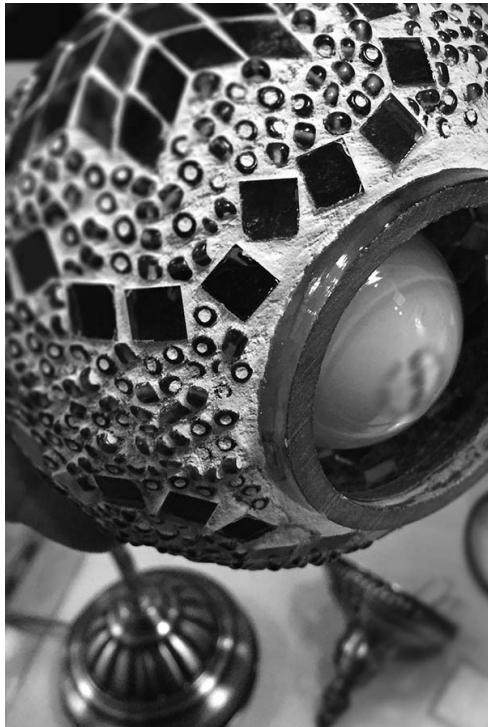
If your lamp has been on for some time, make sure it remains off for at least 30 minutes before you attempt to disassemble it.

With one hand, establish a firm grip on the top-dome and the glass shade together.

With your other hand, hold the bottom dome attachment and pull down firmly.

This pulling-down motion creates the springs to contract, allowing the attachment to easily be removed.





Once the bottom dome attachment is removed, proceed to unscrew and remove the bulb carefully.

Once the bulb is removed, establish a firm grasp with one hand on the top dome as shown.

With your other hand, grasp the glass shade and pull down in the same manner. This again causes the spring fasteners to contract and release the lock between the top dome and the glass shade.



REMEMBER TO FOLLOW US ON [FACEBOOK.COM/ODDCROFT](https://www.facebook.com/ODDCROFT) AND LEAVE YOUR FEEDBACK!