

Getting Started – for Windows user (Setting up your Robot)



Get the drivers and download the software to make your robots go!

- Programmer Driver
- Arduino Software IDE
- Ringo & Wink Software Libraries

Driver Installation

To prepare your computer to write code for your Wink and Ringo robots, you will need to perform the following steps. Install the Driver for the Programming Adapter

Install the Arduino Development IDE (this is the program you'll use to write your code)

Install the Ringo Library Files

Inside Arduino, select "Arduino Fio" as the board, and select the correct port in Tools>Port

Need more help?

This is a smooth process for most people, and once you have the drivers and software loaded up on your computer, it's easy sailing as you begin to play with your robots. If you do encounter any difficulty getting the programming process started, please [Contact Us](#) for assistance.

Driver Installation- IMPORTANT!

Before you can use the Programming Adapter to load code onto your robots, the FTDI drivers must be installed first. Please follow the instructions on this page to download and install the correct driver for your computer and operating system.

It is important that the FTDI drivers be installed on your computer BEFORE connecting the programmer to your computer.



Windows Driver Installation

1. Download the Windows FTDI driver.
2. Run the installer as administrator. (Right click the installer .exe you downloaded and select "Run as administrator" from the drop down. It should be listed toward the top). If not run as administrator, the installation will likely fail.
3. Once installation is complete, the programming adapter may be plugged in. Your computer should now recognize it as a virtual com port and assign it a com port number.

[FTDI Drivers - Windows](#)



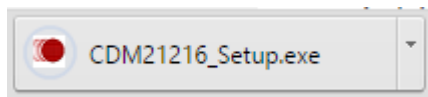
Mac Driver Installation

- Download the Mac FTDI driver (Mac OS 10.9 and above).
Follow the Mac driver installation guide for your version of Mac OS. You can download the installation guide : ([PDF](#))
If you have an earlier version of Mac OS (10.3 to 10.8), you can download the earlier version driver : ([Download](#))

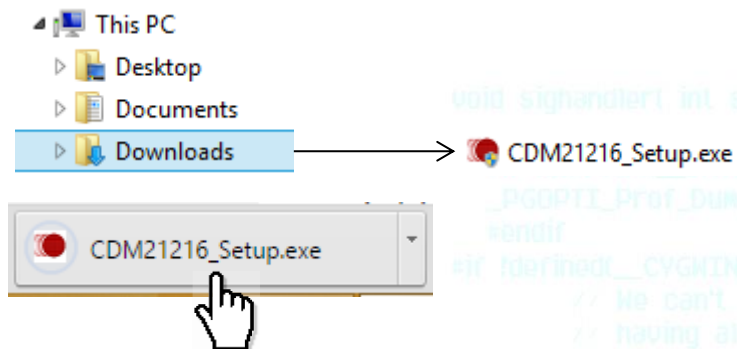
[FTDI Drivers - Mac](#)



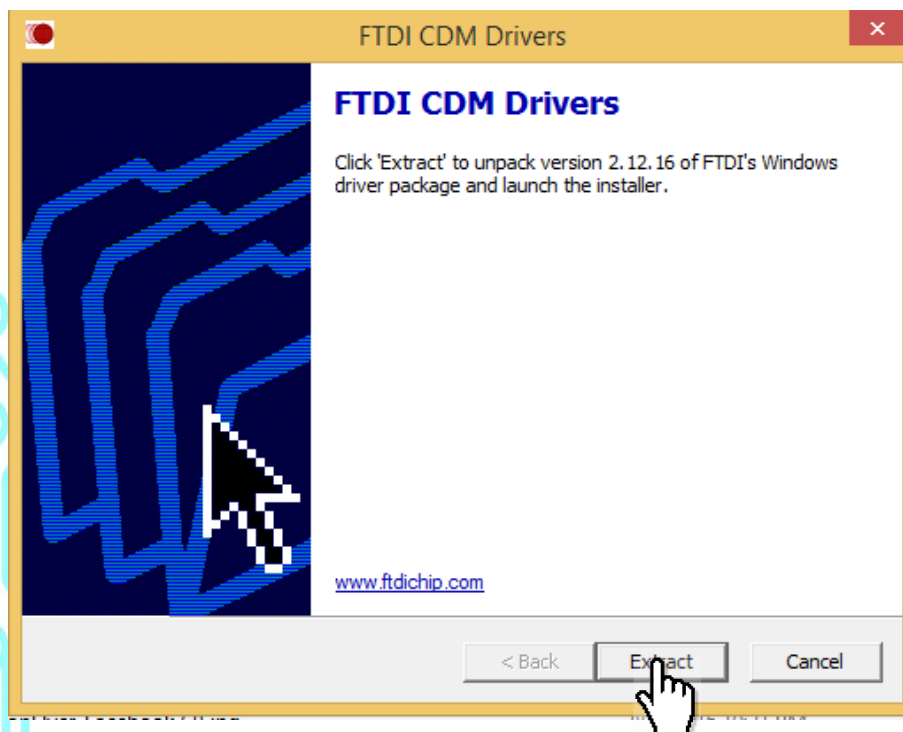
For Windows user:



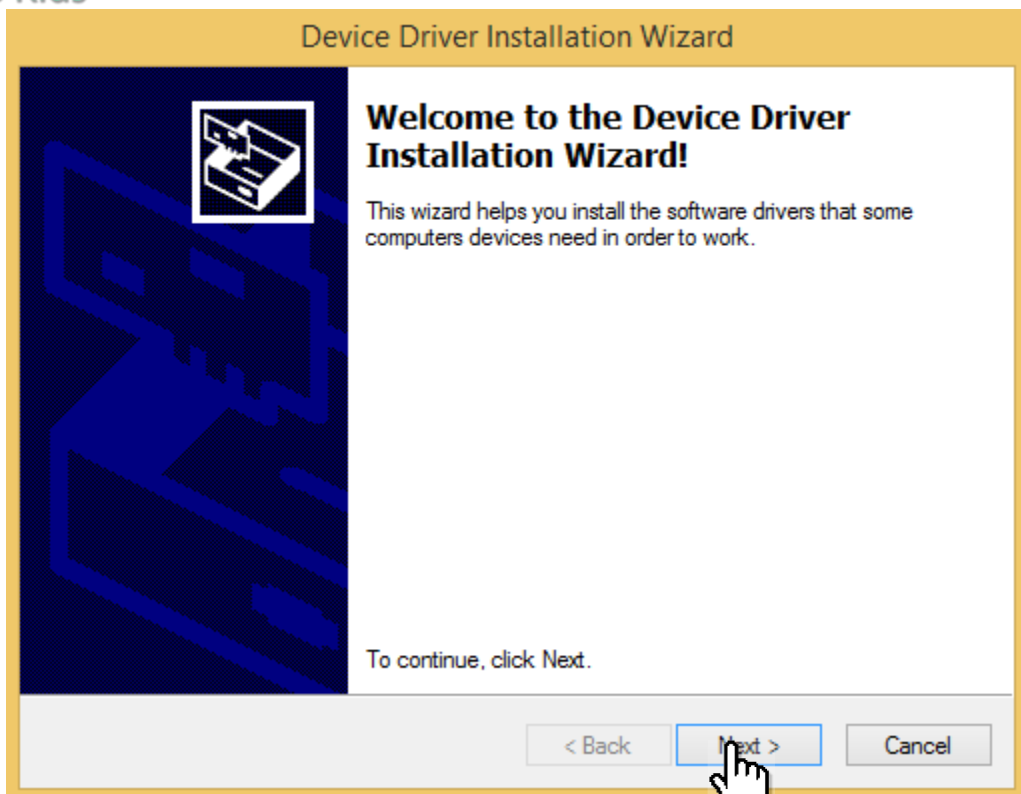
Once the file has been downloaded, you should be able to see the “CDM21216_Setup.exe” on the lower left of the download bar or it can be found in the “Downloads” folder.



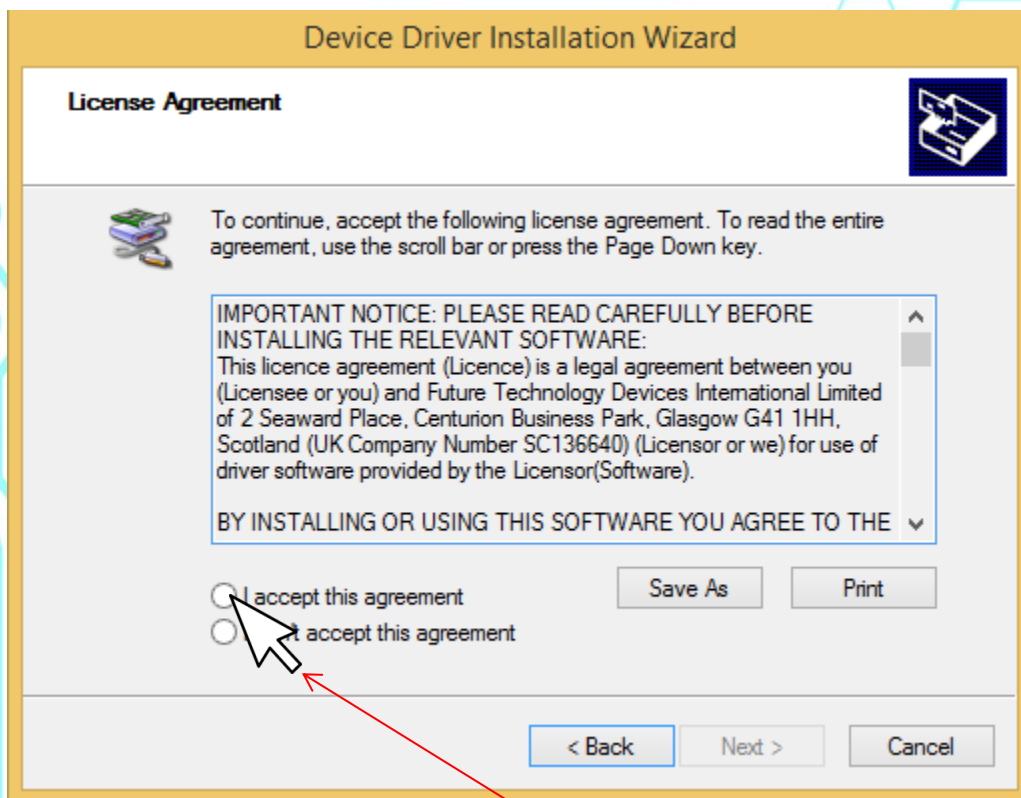
Go ahead to click on the “CDM21216_Setup.exe”



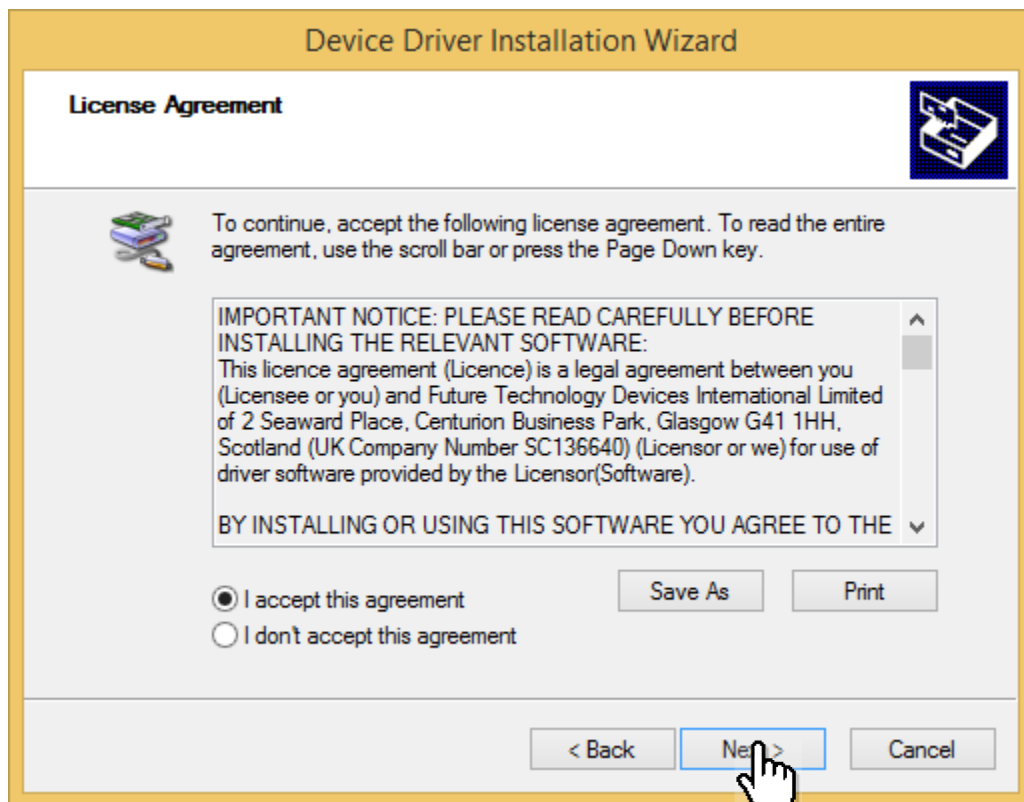
Click Extract



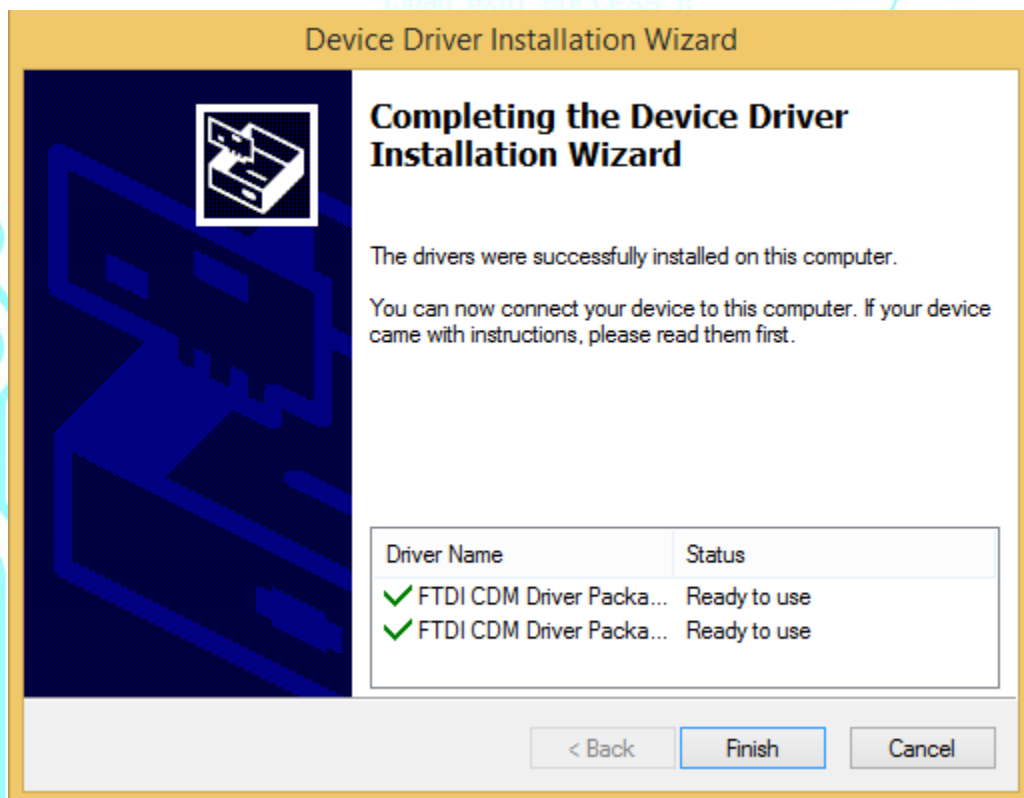
Click Next



Select "I accept this agreement"



Click Next




Installation of the Driver Completed



Arduino IDE Installation

Arduino is the program you will use to actually write code for your robots. It is kind of like a text editor or word processor for computer code. Arduino includes its own compiler that runs in the background, so no additional tools are required.

Download Arduino for your Operating System



ARDUINO 1.6.9
The open-source Arduino Software (IDE) makes it easy to write code and upload it to the board. It runs on Windows, Mac OS X, and Linux. The environment is written in Java and based on Processing and other open-source software.
This software can be used with any Arduino board. Refer to the [Getting Started](#) page for Installation instructions.

Windows Installer
Windows ZIP file for non admin install

Mac OS X 10.7 Lion or newer

Linux 32 bits
Linux 64 bits
Linux ARM (experimental)


Release Notes
Source Code
Checksums

You will want to use Arduino version 1.6.5 or later.

Visit the [Arduino Software Download](#) page and grab the correct version for your operating system.


Software

Arduino IDE



Once you are at the Arduino Home page, go ahead to click “Windows Installer”

Download the Arduino Software



ARDUINO 1.6.9
The open-source Arduino Software (IDE) makes it easy to write code and upload it to the board. It runs on Windows, Mac OS X, and Linux. The environment is written in Java and based on Processing and other open-source software.
This software can be used with any Arduino board. Refer to the [Getting Started](#) page for Installation instructions.

Windows Installer
Windows ZIP file for non admin install

Mac OS X 10.7 Lion or newer

Linux 32 bits
Linux 64 bits
Linux ARM (experimental)

Release Notes
Source Code
Checksums

CONNECT, COLLABORATE, CREATE. [Learn more about the Create platform.](#)

**Try out the new
Arduino Web Editor**

It will lead you to this page. If you would like to make a donation to support the Arduino Software, go ahead and click “Contribute and Download”. Otherwise, click “Just Download”.

Support the Arduino Software

Consider supporting the Arduino Software by contributing to its development. (US tax payers, please note this contribution is not tax deductible). [Learn more on how your contribution will be used.](#)



Since March 2015, the Arduino IDE has been downloaded **8,051,566** times. Impressive! This IDE is no longer just for Arduino and Genuino boards. Hundreds of companies around the world are using it to program their devices, including compatibles, clones, and even counterfeit. You can help accelerate the development of the Arduino IDE by contributing towards the effort of making it better.

Contribution options: \$3, \$5, \$10, \$25, \$50, OTHER

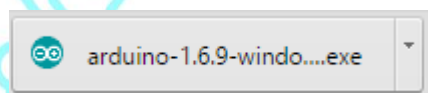
JUST DOWNLOAD

CONTRIBUTE & DOWNLOAD



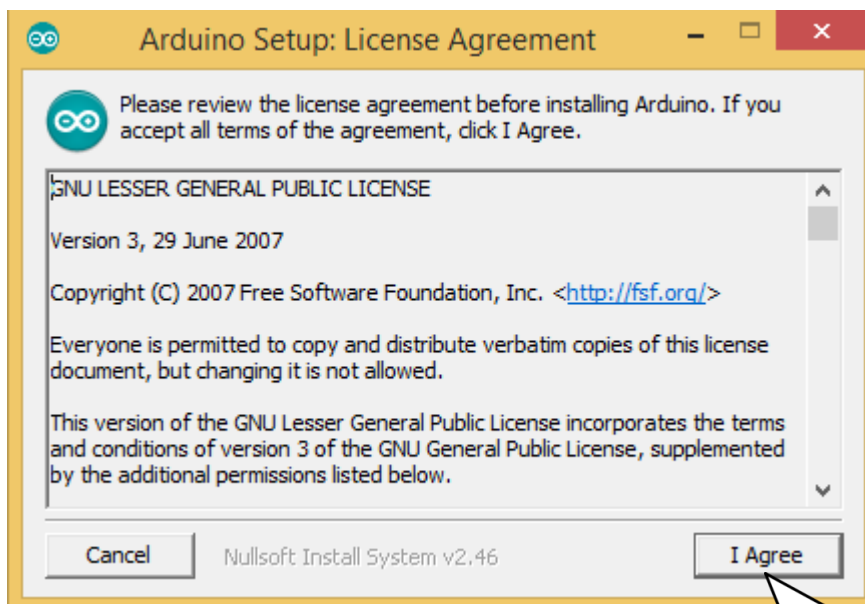
Click Here

Once the file has been downloaded, you should be able to see the “ardunio-1.6.9-windo....exe” on the lower left of the download bar, or it can be found in the “Downloads” folder.



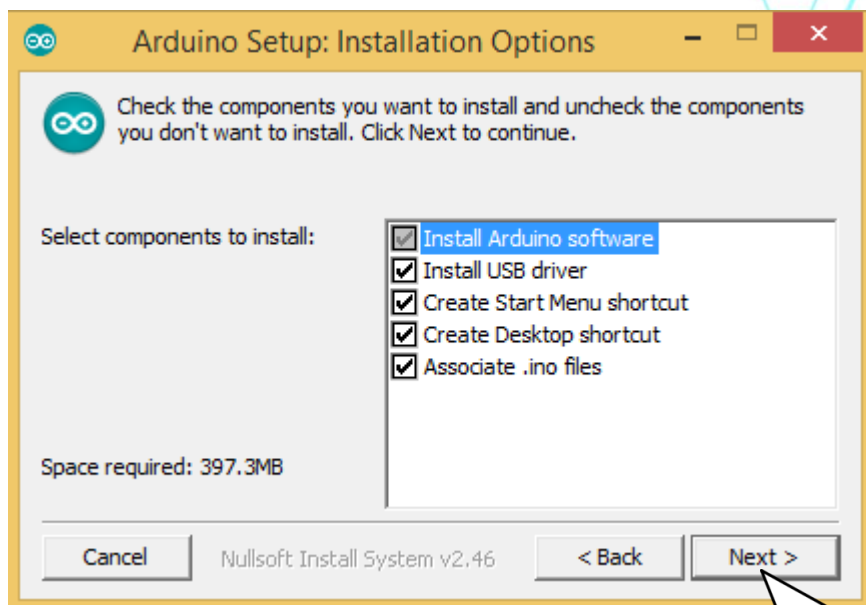
Go ahead to click on the “ardunio-1.6.9-windo....exe”

On the Arduino Setup: License Agreement window, click “I Agree”



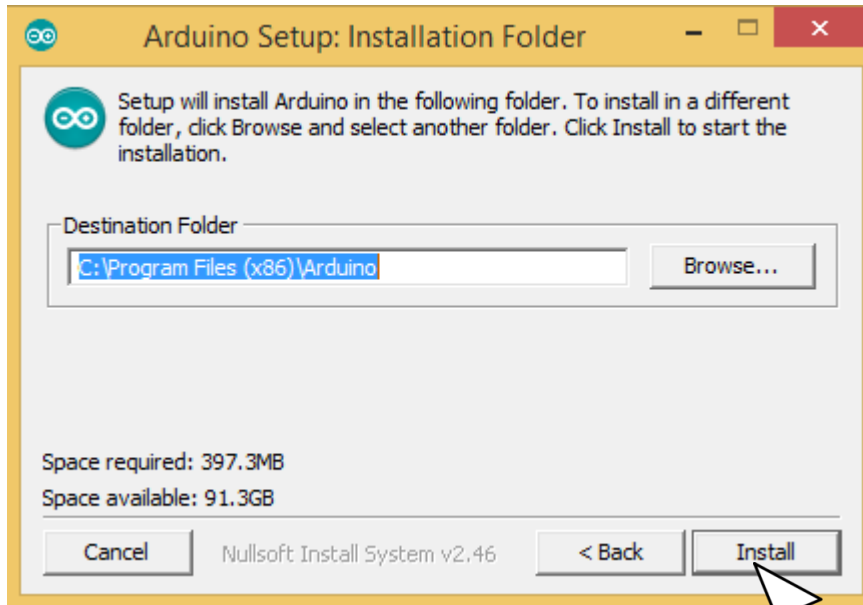
Click Here

Proceed to click the “Next” button



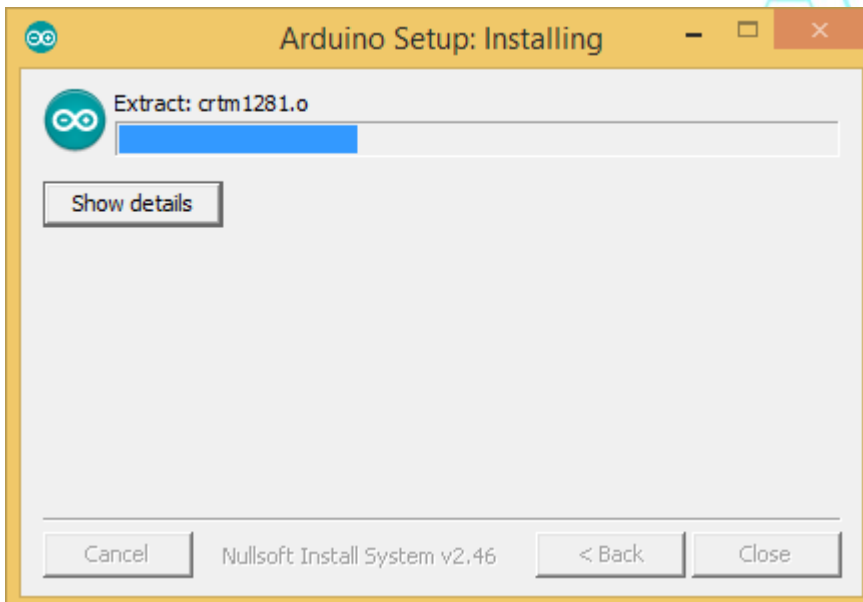
Click Next

From the Arduino Setup: Installation Folder window, proceed to click “Install”

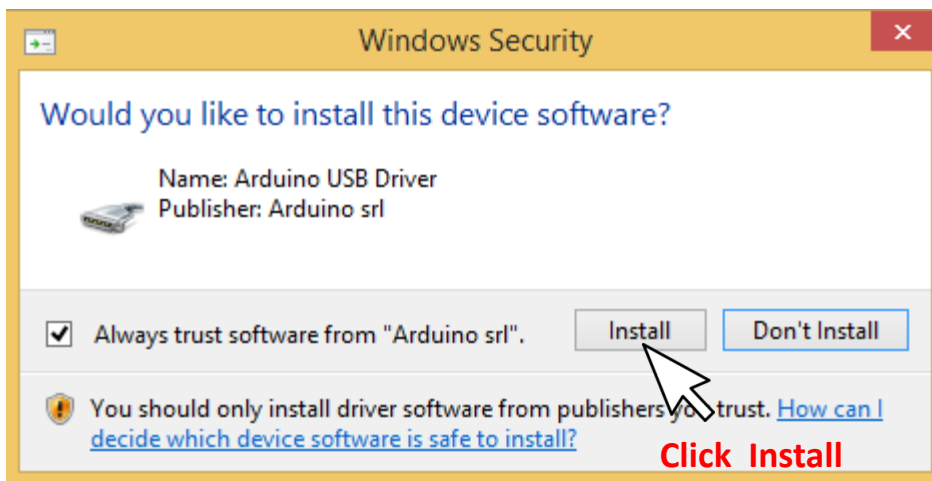


Click Install

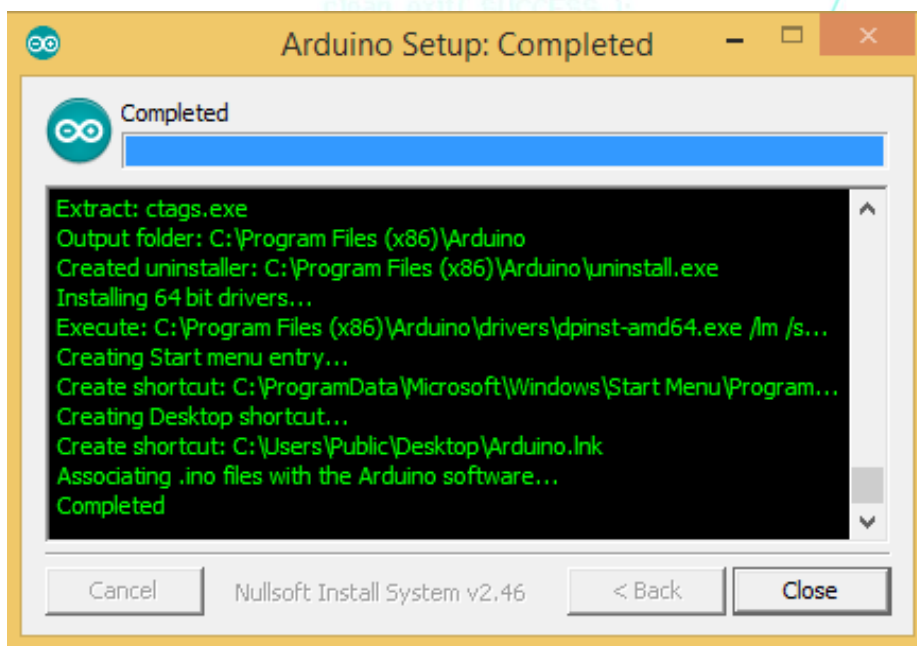
Wait for the process to complete.



Next, go ahead to click “Install” the Arduino USB Driver



The Arduino Setup is Completed

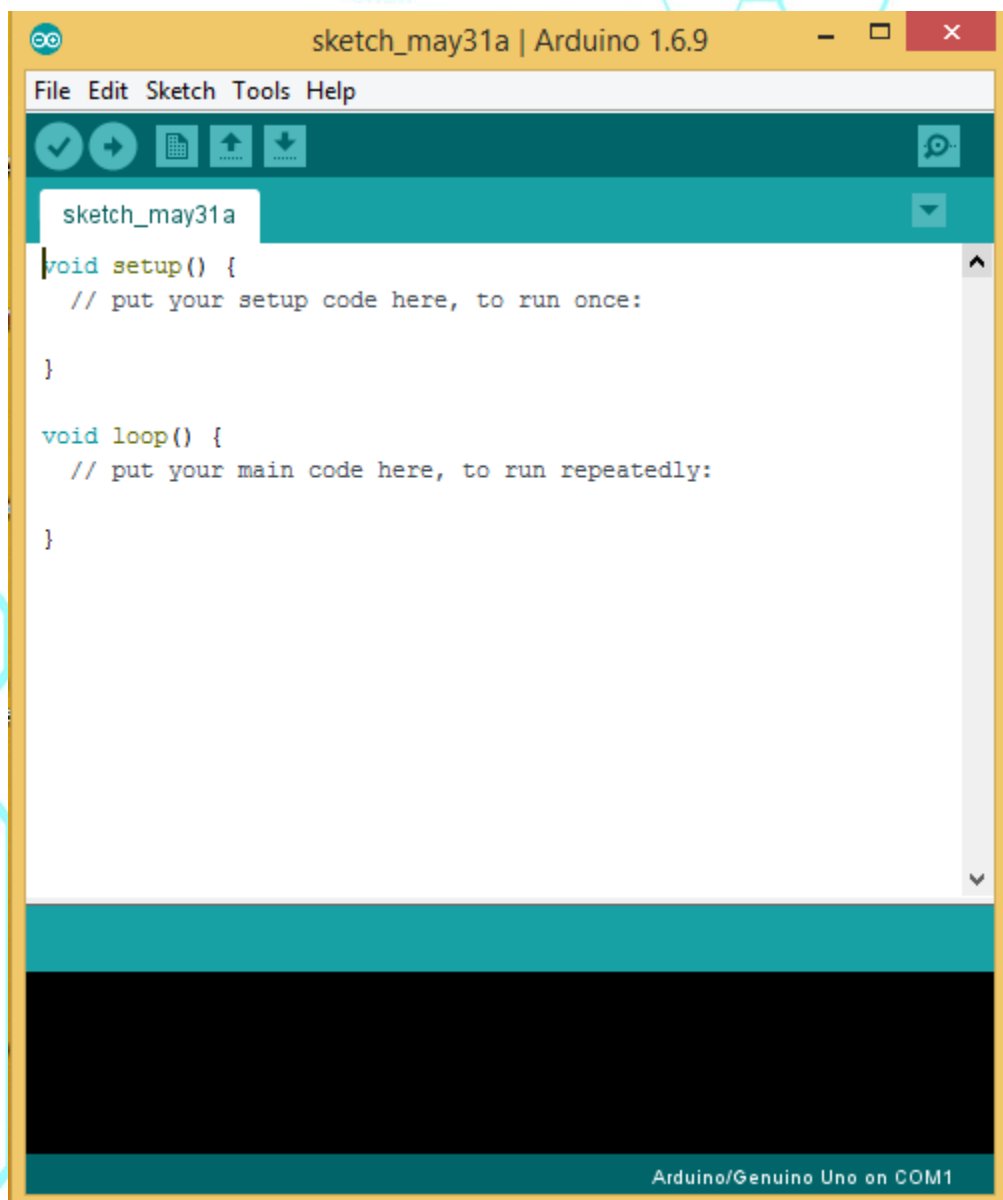


Now you have the Arduino IDE software installed in your computer. Go to your desk top and double click on the Arduino shortcut icon to launch the Arduino IDE software.

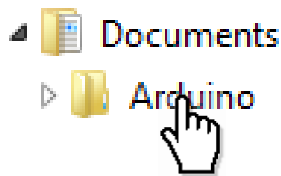


**Double click
to launch**

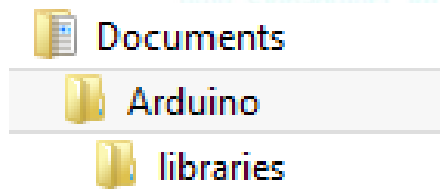
Once launched, it should look like this.



Locate the "Arduino folder" inside "Documents folder"

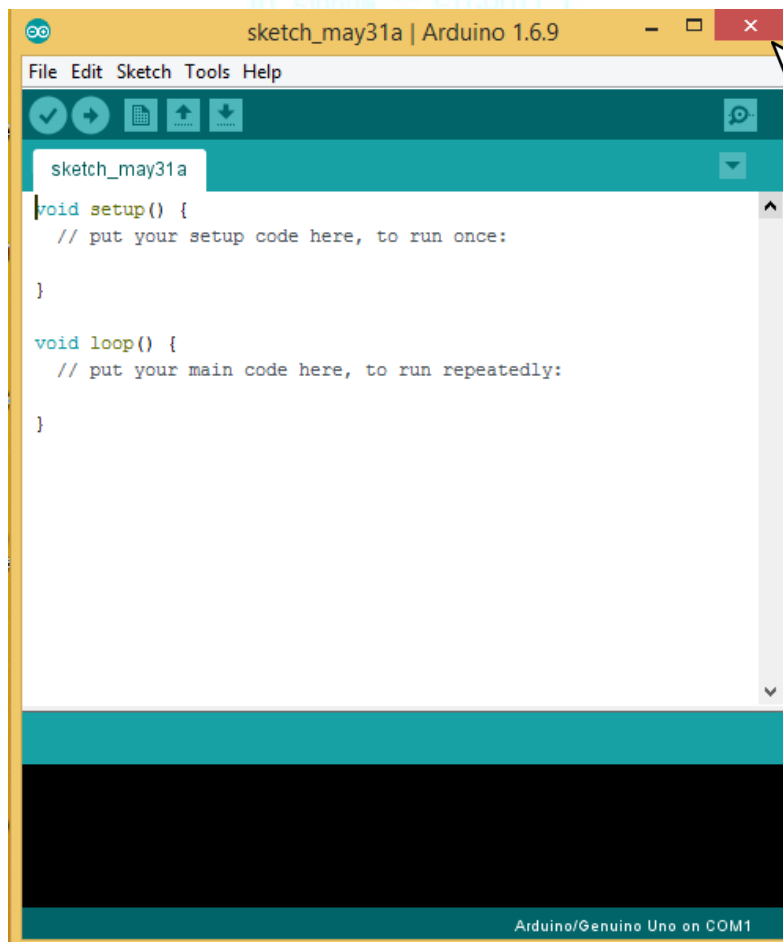


Click and open this folder



And you will see a libraries folder

Next steps is to install the Ringo folder library. Go ahead to quit the Arduino software



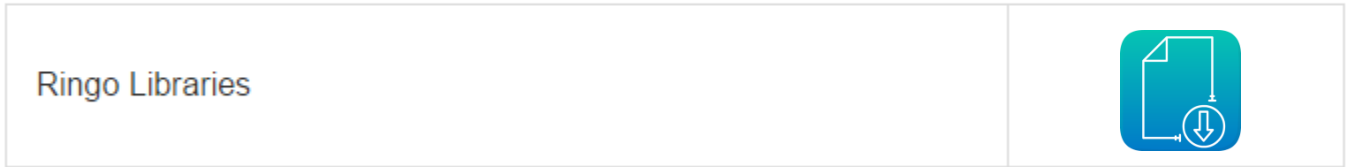
**Click to close
Arduinio**

Install Ringo Software Libraries

The software libraries include code you'll add to your Arduino installation. This only needs to be done one time. Arduino will use these library files as necessary automatically after they are installed.

- 1) **Download a zip archive including all the [Ringo library](#) files (also use these same files for Wink) Click on the icon below:**

Libraries



- 2) **Copy the three folders included in this zip file into your Arduino/libraries folder:**

For the examples to compile, these three important folders must be copied into your libraries folder: **Adafruit_NeoPixel**, **RingoMsTimer2**, and **RingoWire**. You'll need to re-start the Arduino software for it to see the new libraries.

The "libraries" folder is located inside the folder where your computer saves Arduino sketches.



Windows Library Location:

My Documents\Arduino\libraries

After copying the paths should look like this:

My Documents\Arduino\libraries\Adafruit_NeoPixel
My Documents\Arduino\libraries\RingoMsTimer2
My Documents\Arduino\libraries\RingoWire



Mac Library Location:

Documents/Arduino/libraries

After copying the paths should look like this:

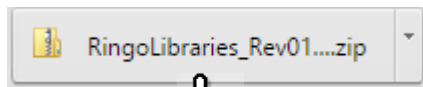
Documents/Arduino/libraries/Adafruit_NeoPixel
Documents/Arduino/libraries/RingoMsTimer2
Documents/Arduino/libraries/RingoWire

Arduino libraries installation

For more information or help regarding library installation, check out the "Libraries" page on the official Arduino site:

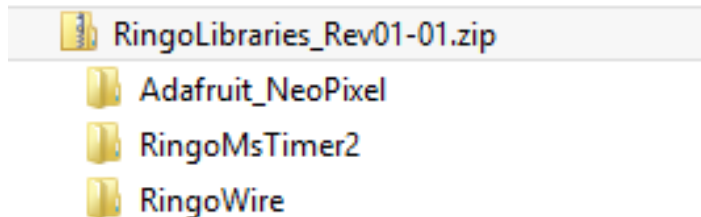
<https://www.arduino.cc/en/Guide/Libraries>

Once the file has been downloaded, you should be able to see the “RingoLibraries_Rev01.....zip” on the lower left of the download bar or it can be found in the “Downloads” folder.

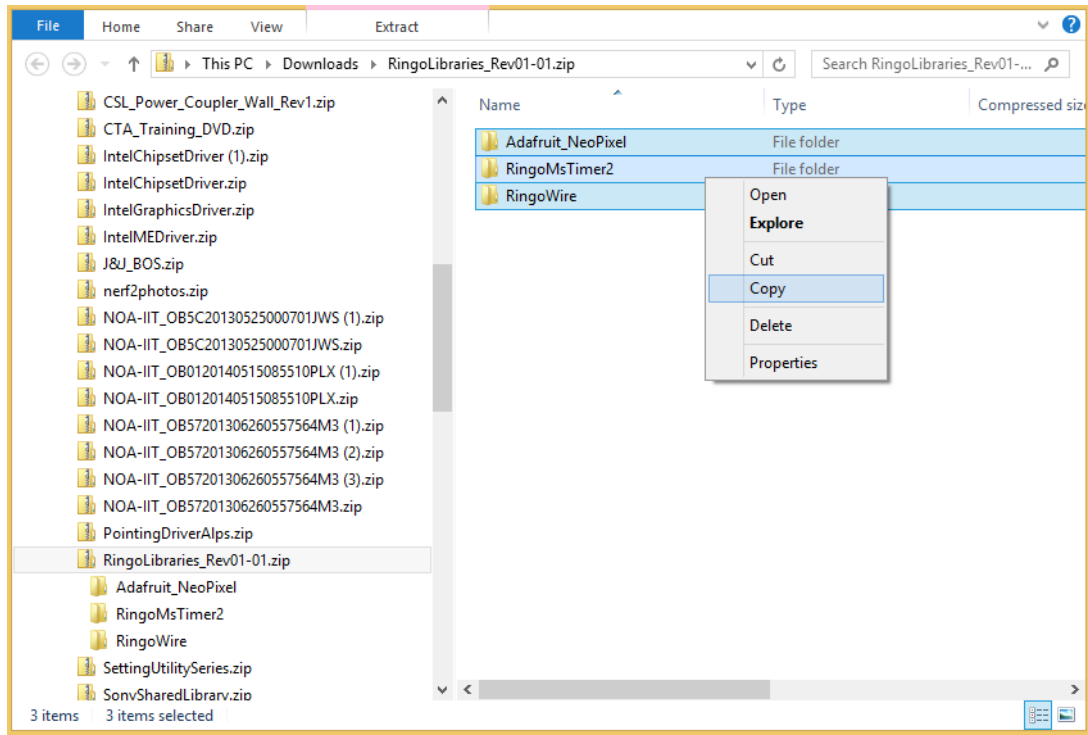


Go ahead to click on the “RingoLibraries_Rev01.....zip”

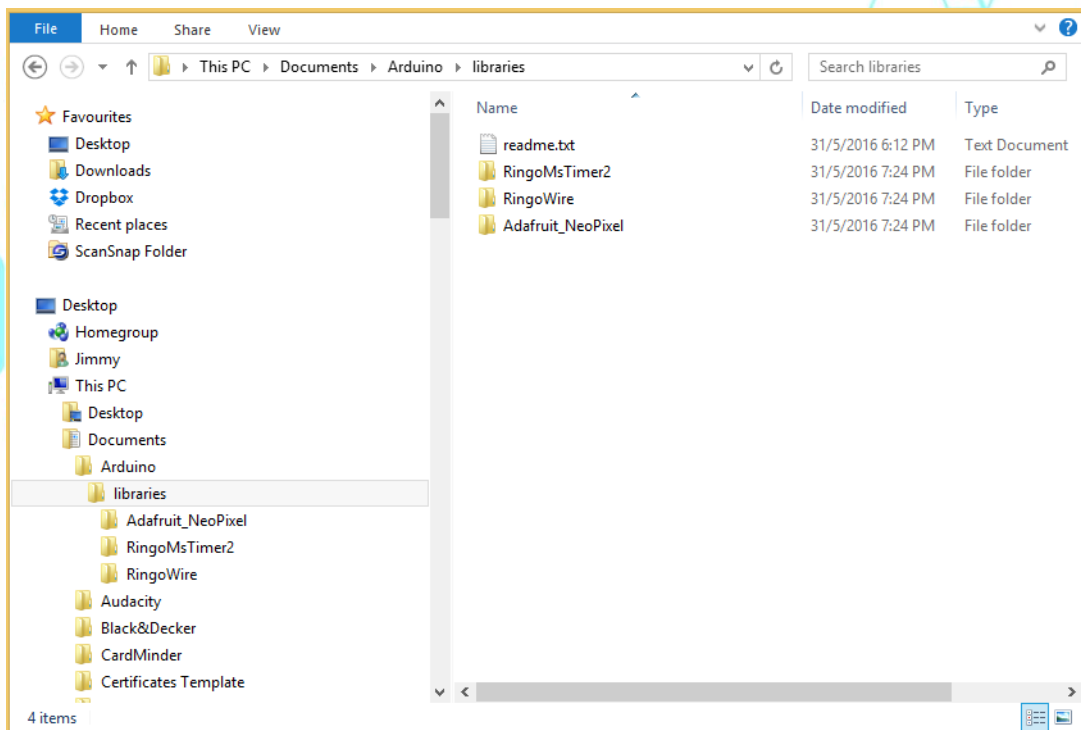
Once you’ve unzipped the folder, you will see the following three folders:

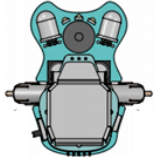


Drag and right click to copy the three folders.



Paste them inside the Arduino libraries folder and you are done with the complete installation process.





Programming your Robot

Follow the steps and get yourself familiar with how to load the program sketch into your robot.

Windows



Windows user

Mac







Mac user

Once the button is clicked, it will lead you to the following page

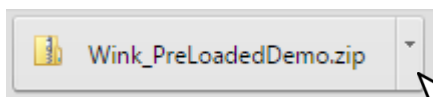
Wink Demo

There is four fun demo software for you to get your robot up and running. These are called Arduino code files (sketches). You may use the “Base Sketch” as a template to begin writing your code. If you are already familiar with writing some basics, go ahead to explore your creativity or modify the other code examples to learn and have a better understanding.

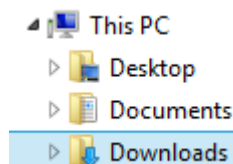
Software File	Description	Download
Base Sketch	Use the Base Sketch to begin writing your own code. The project automatically includes the supporting tabs that include Wink's background functions.	
Pre-Loaded Demo	This is the code that was loaded on your Wink when it was shipped. The basic behaviours include the Wink Dance, Barrier and Object Avoidance, and Light Seeking. You can index between the three behaviours by pressing the BTN button on the robot.	
Drive with IR Remote	This demo allows you to drive an IR equipped Wink with the optional remote control. Use this sketch as a basis for making your own remote control triggered behaviours.	
ZOMBIE Wink!	This is a fun behaviour we created for Arduino Day 2016. Load this on two or more Wink robots and watch the Zombie Apocalypse happen!	

Click this icon to download the
“Pre-Loaded Demo”

Once the file has been downloaded, you should be able to see the “Wink_PreLoadedDemo.zip” on the lower left of the download bar or it can be found in the “Downloads” folder.



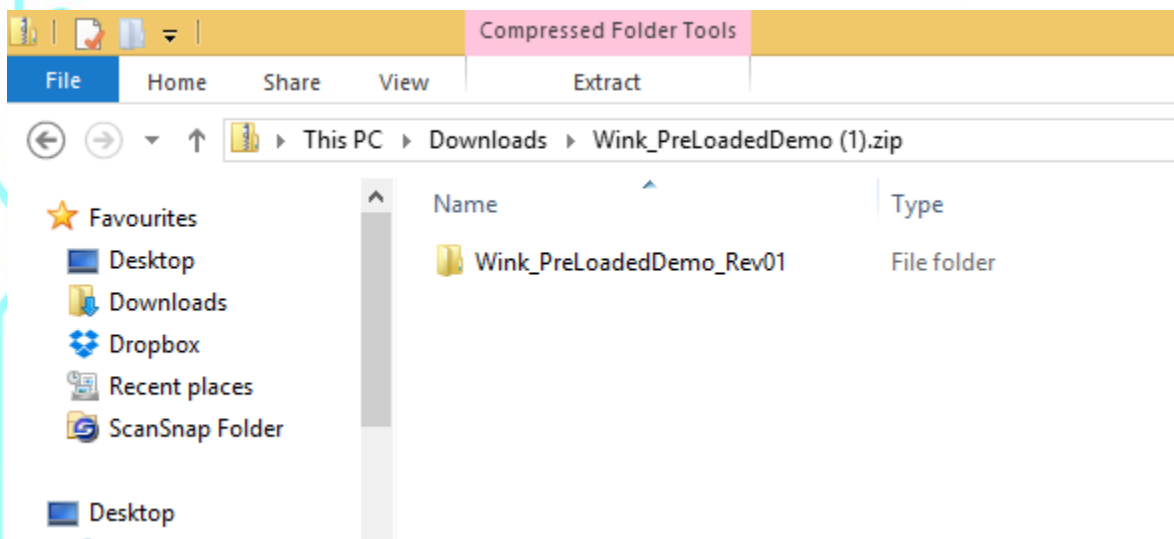
Click to open the zip file



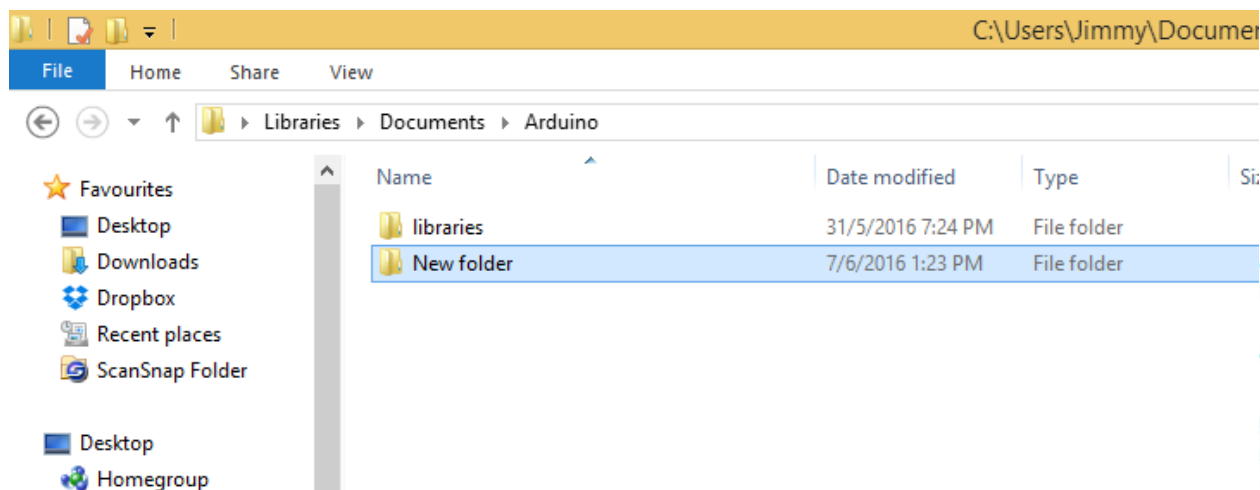
Name	Type
Wink_PreLoadedDemo_Rev01	File folder

Or double click to open the zip file from the downloads folder

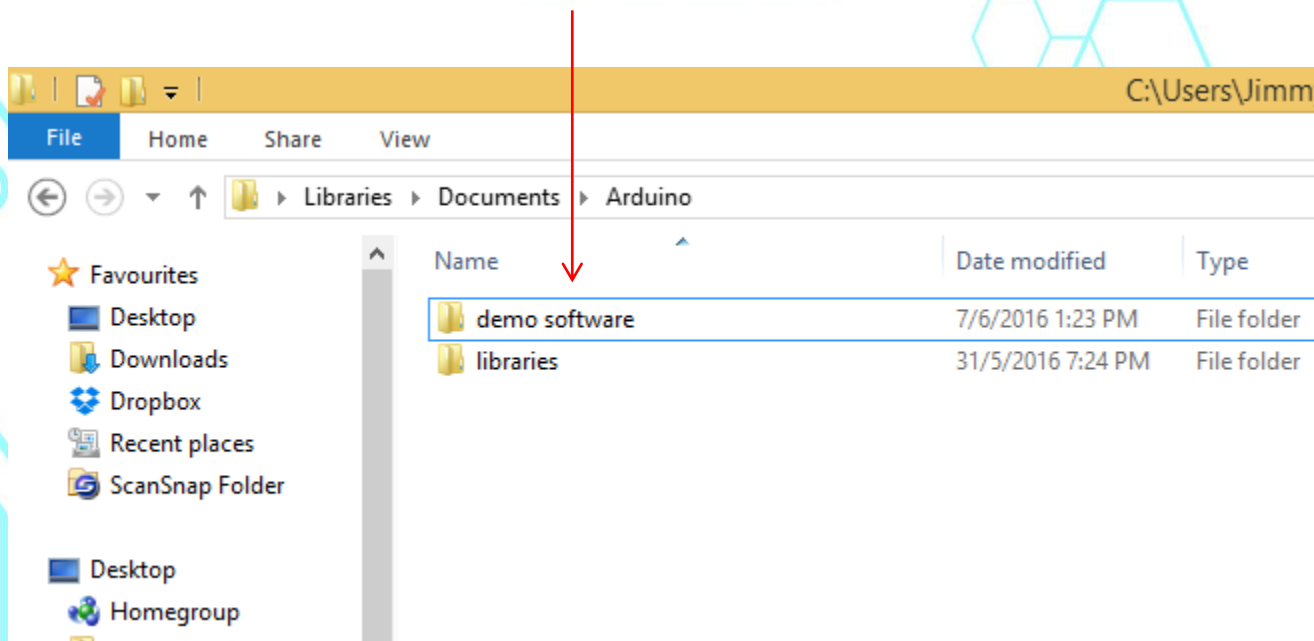
Once the compressed folder is opened, you should be able to see all the Wink_PreLoadedDemo folder.



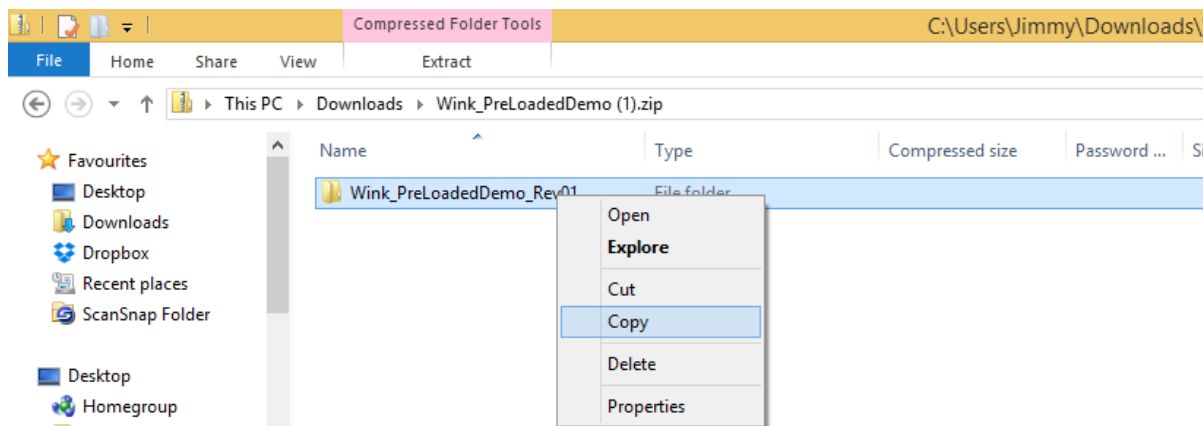
Create a new folder in the Arduino folder and rename it as “demo software”



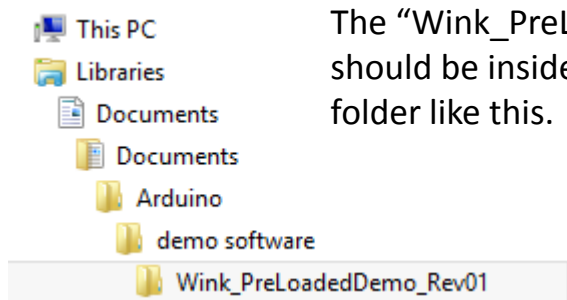
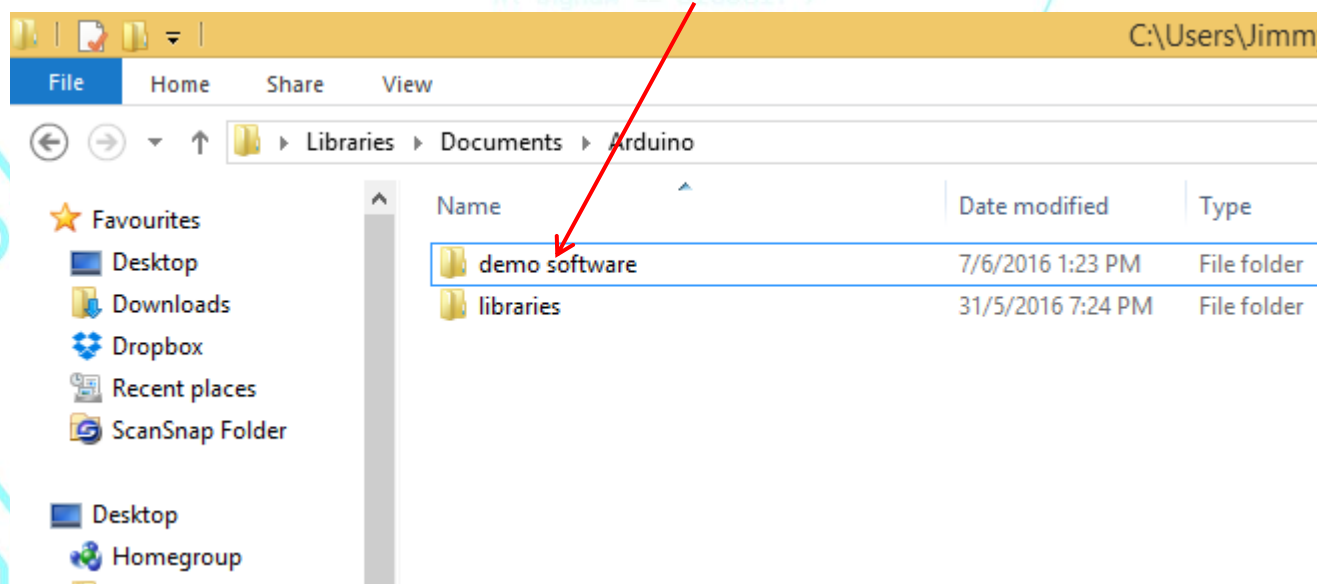
And it should look like this.



From the Downloads folder, right click and copy all the folder of the “Wink_PreLoadedDemo” and paste it inside the demo software folder which you have just created.



Right click copy and paste inside here.



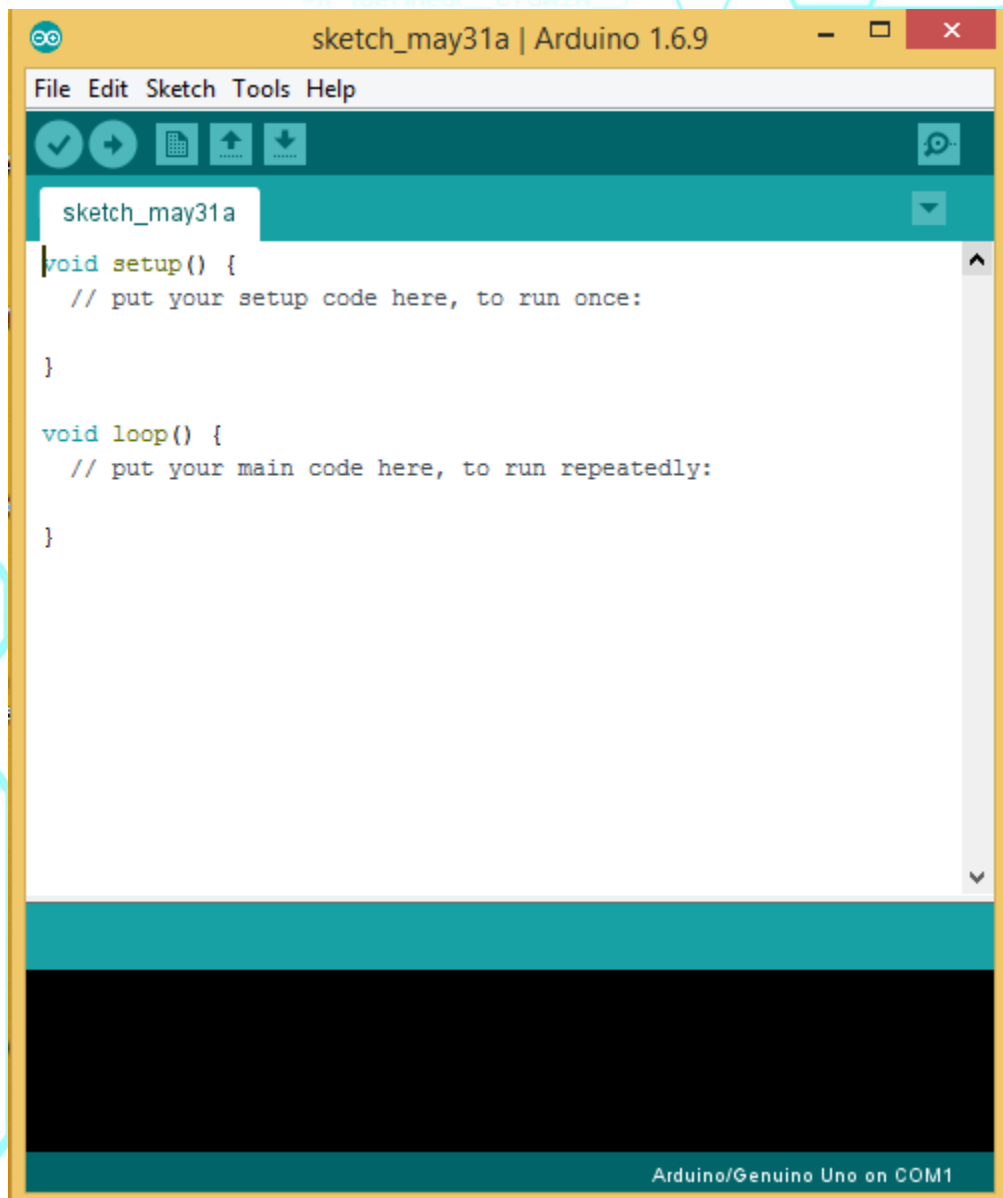
The “Wink_PreLoadedDemo” folder should be inside the “demo software” folder like this.

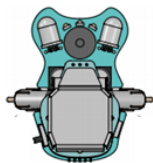
From your desk top, double click on the Arduino shortcut icon to re-launch the Arduino IDE software.



**Double click to
re-launch the
Arduino IDE
software**

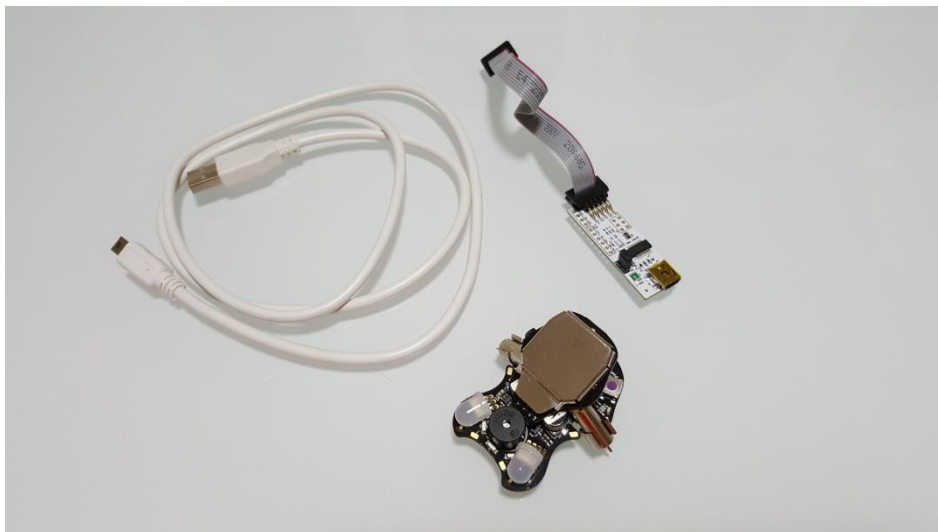
Once opened. It should look like this.





Connecting your Robot

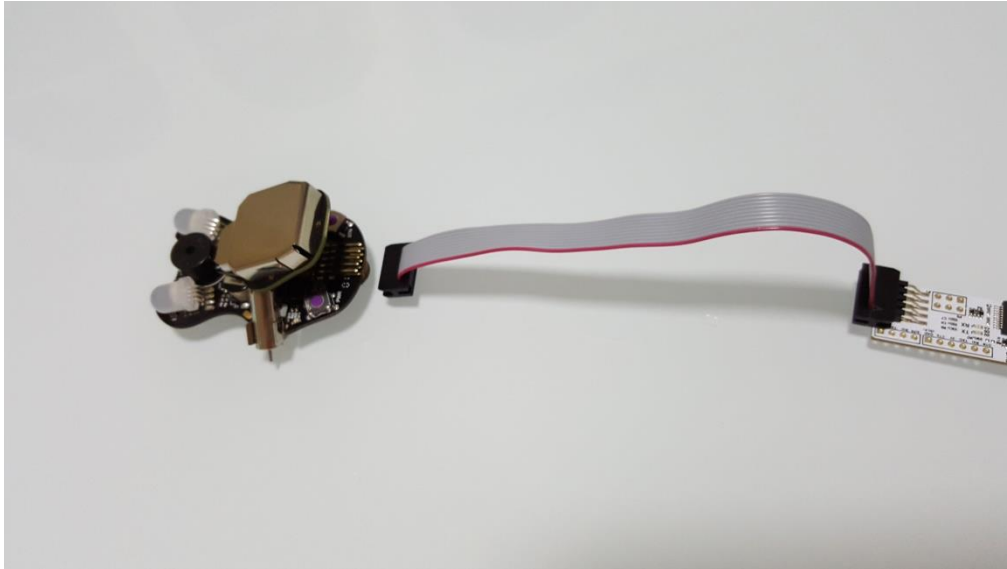
Ensure that you have all these items on hand. Wink robot, programming adapter and (A USB) to (B mini) USB cable.



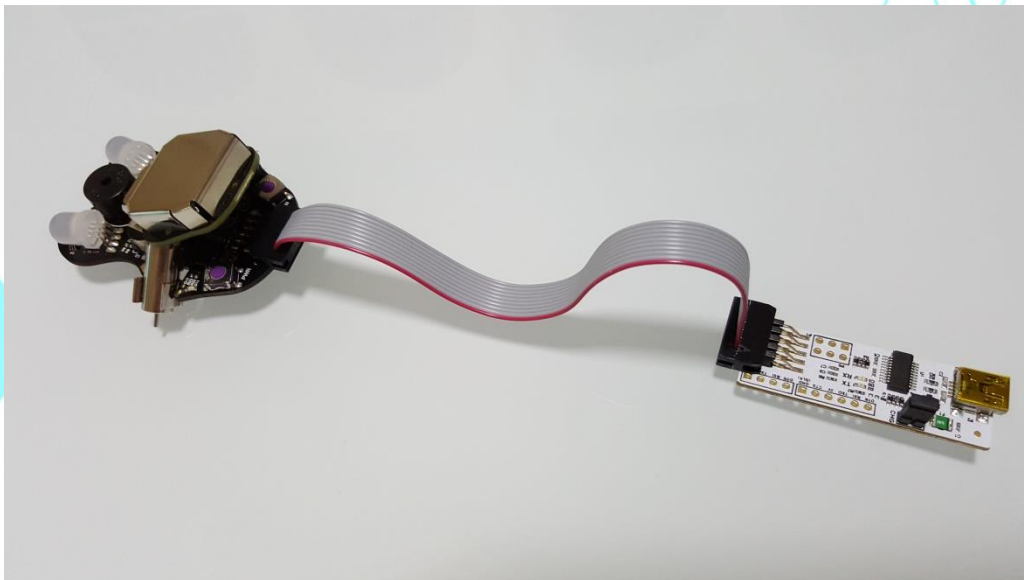
Connect the (B mini) USB cable to the programming adaptor.



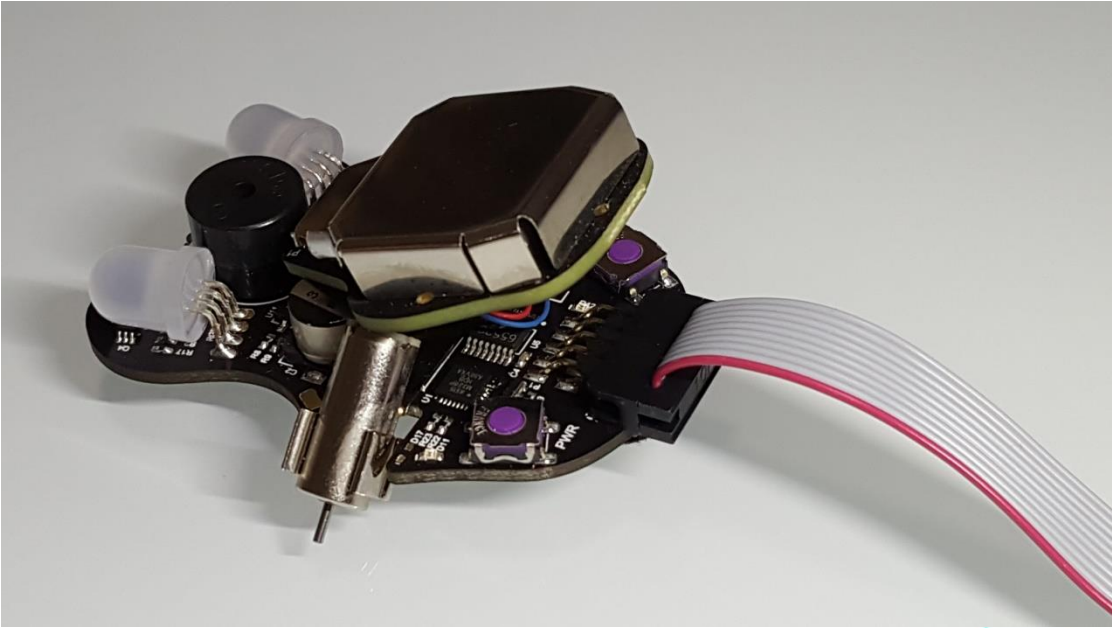
Now connect the ten pins supplied cable to the robot .



! IMPORTANT Ensure that the orientation of the ten pins cable is correctly aligned and not twisted!



Ensure all the ten pins is properly inserted into the connector of the robot.

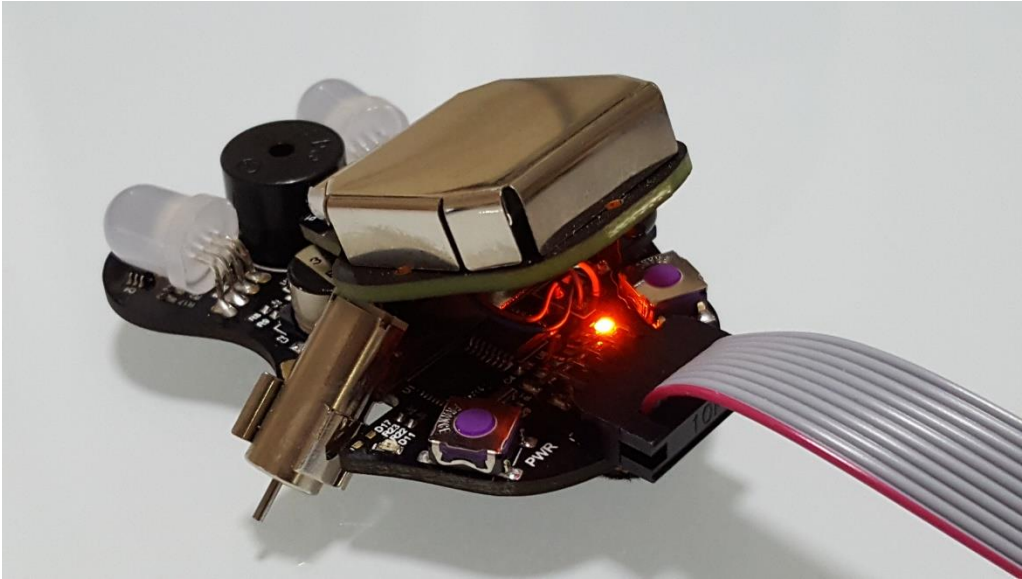


```
if( signal == SIGQUIT )  
    clean_exit( SUCCESS );
```

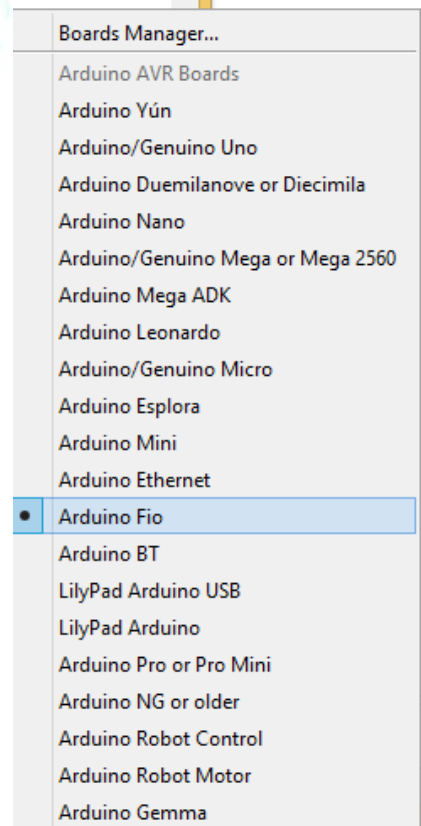
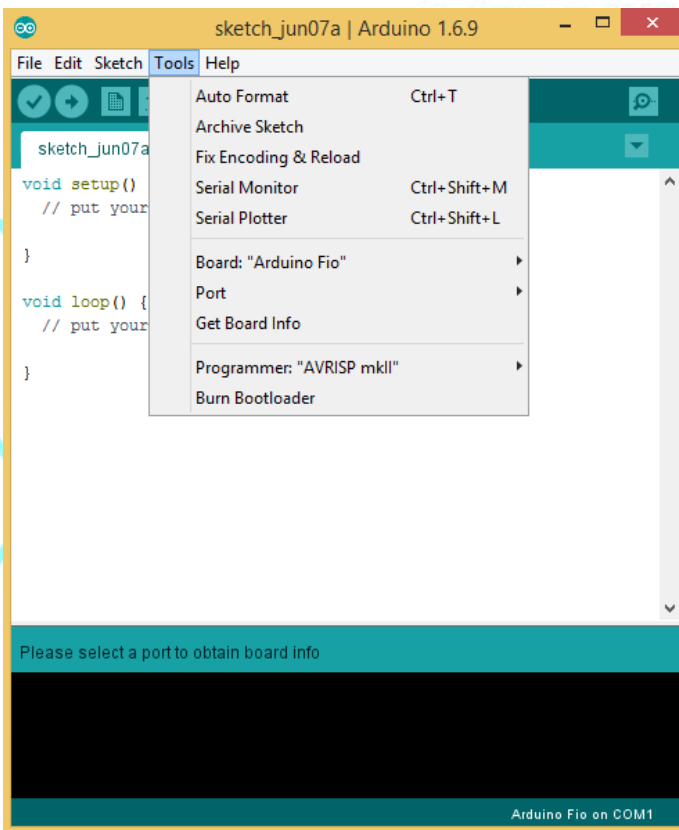
Next, connect the USB cable to your computer.



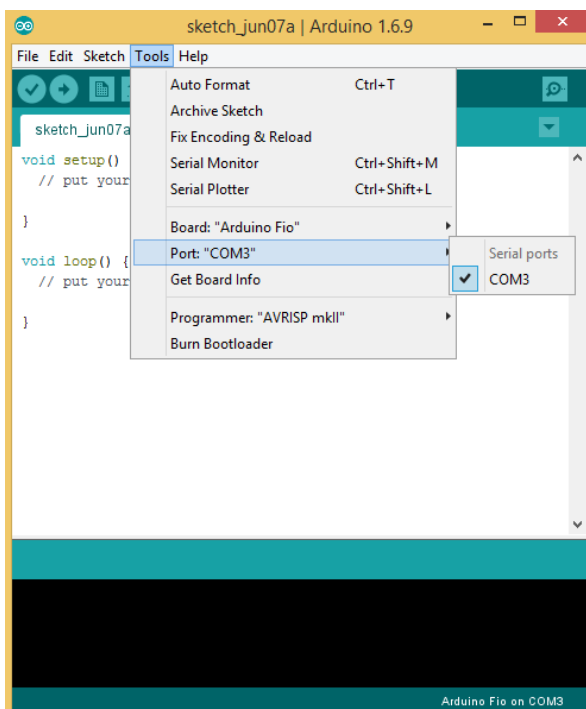
You should see the LED lighted up on the robot and is on charging mode.



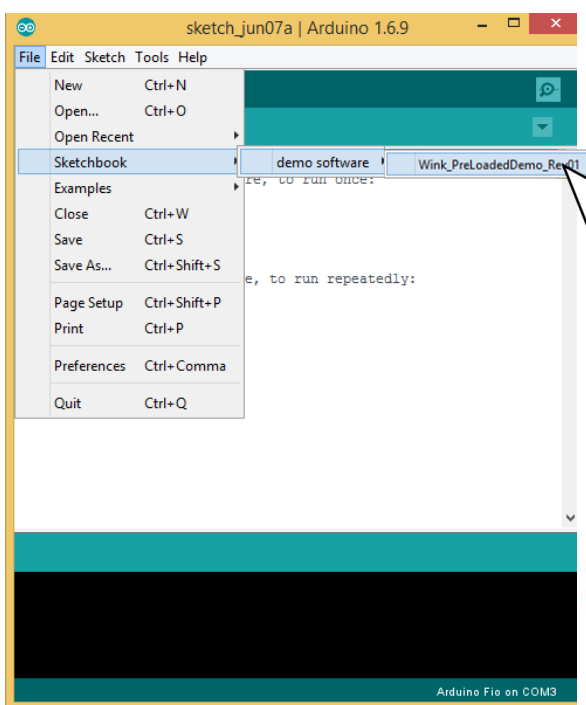
From the Arduino IDE, go to “Tools” > Board: select “Arduino Fio”



From “Tools” again point to > Port: and you will see “COM 3”, “COM 4” depending on your computer. If you don’t see any port available, try disconnecting the USB and reconnect again. (This is a common problem, and it’s normal where the computer needs to refresh to detect the port)

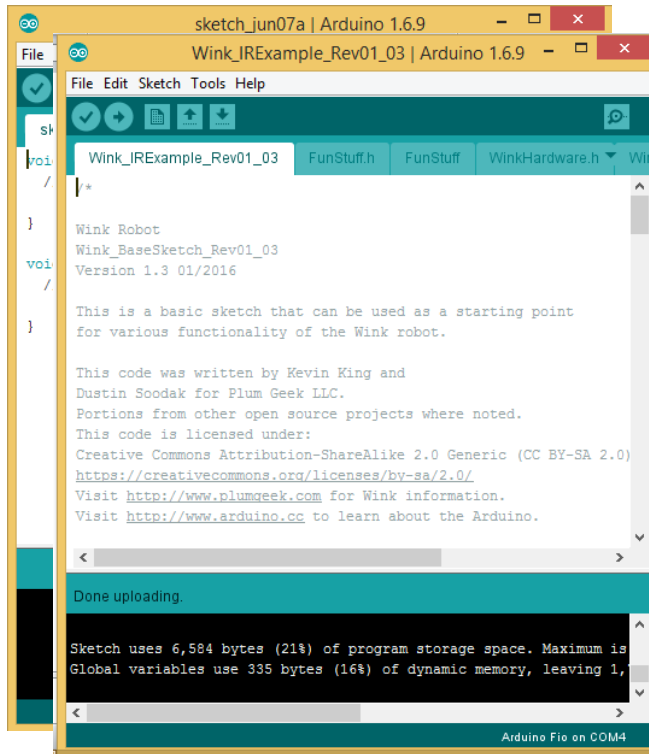


Now, your Arduino IDE setup is ready to download sketches to the robot. Point to File > Sketchbook > demo software > Click “Wink_PreLoadedDemo”

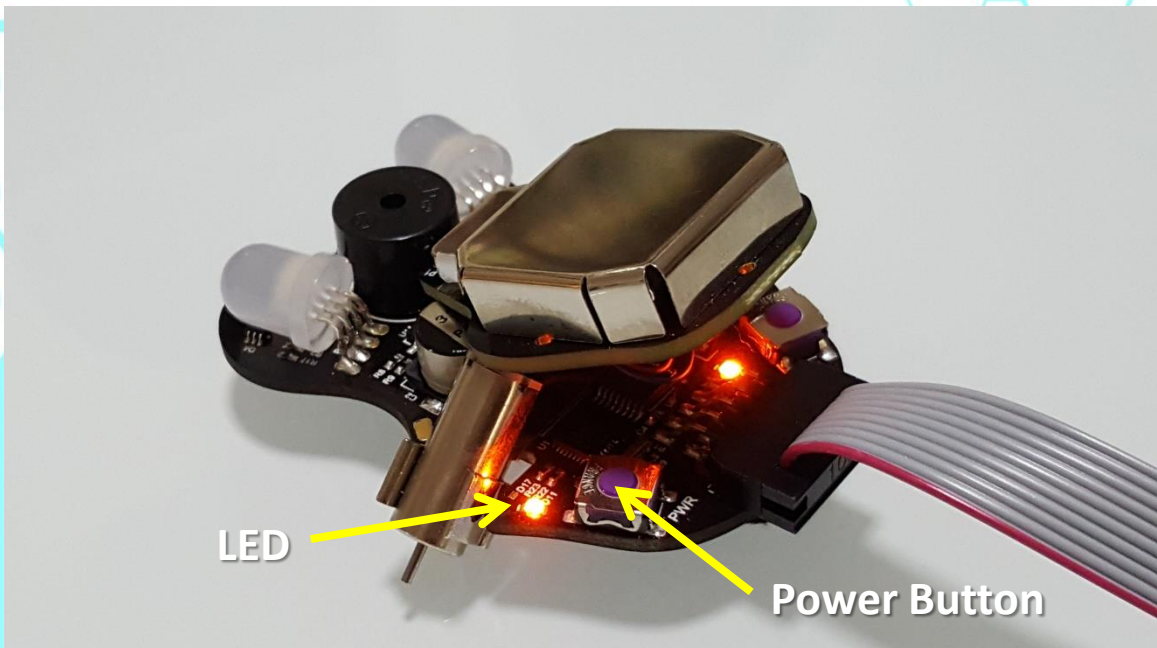


Click to open

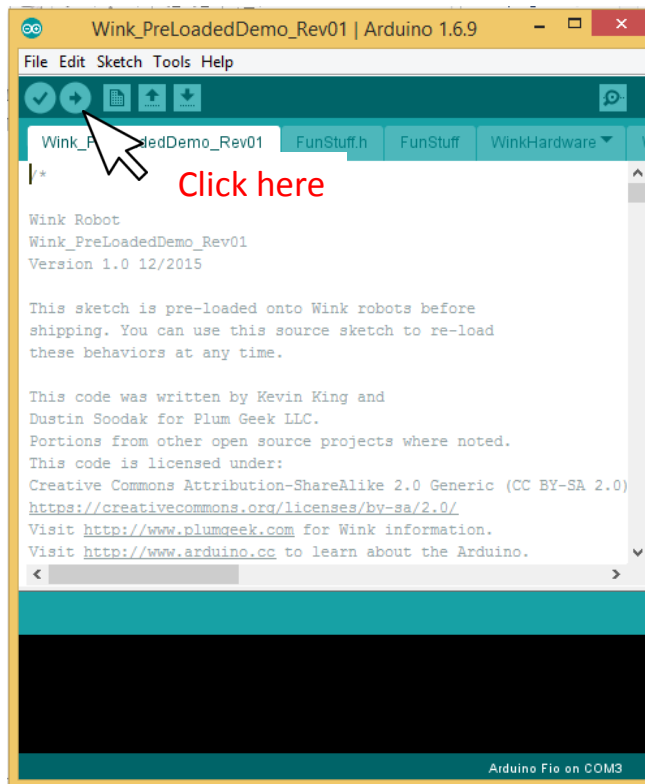
A new Arduino IDE window will open with the entire “Wink_PreLoadedDemo” sketch.



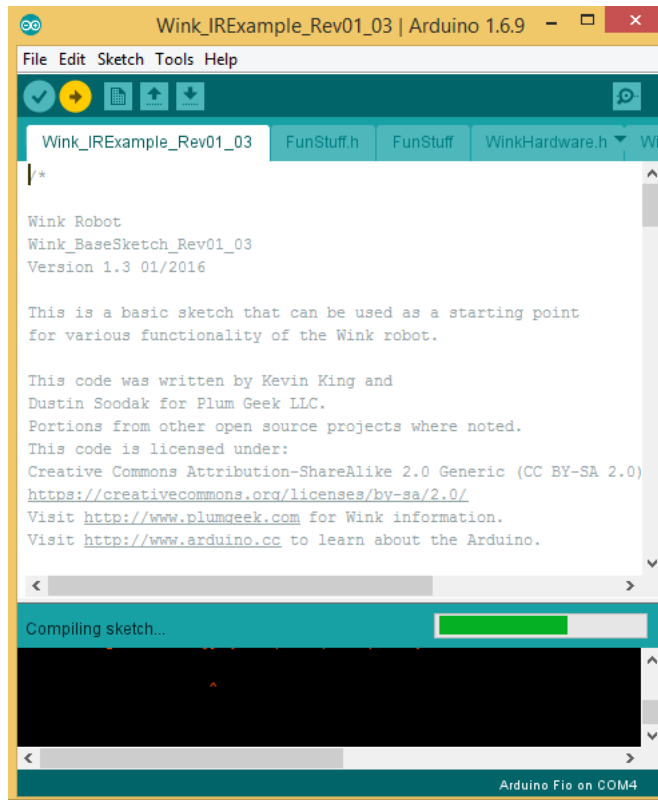
Turn on your robot by pushing the Power Button as shown. The LED next to the power button should be lighted up.



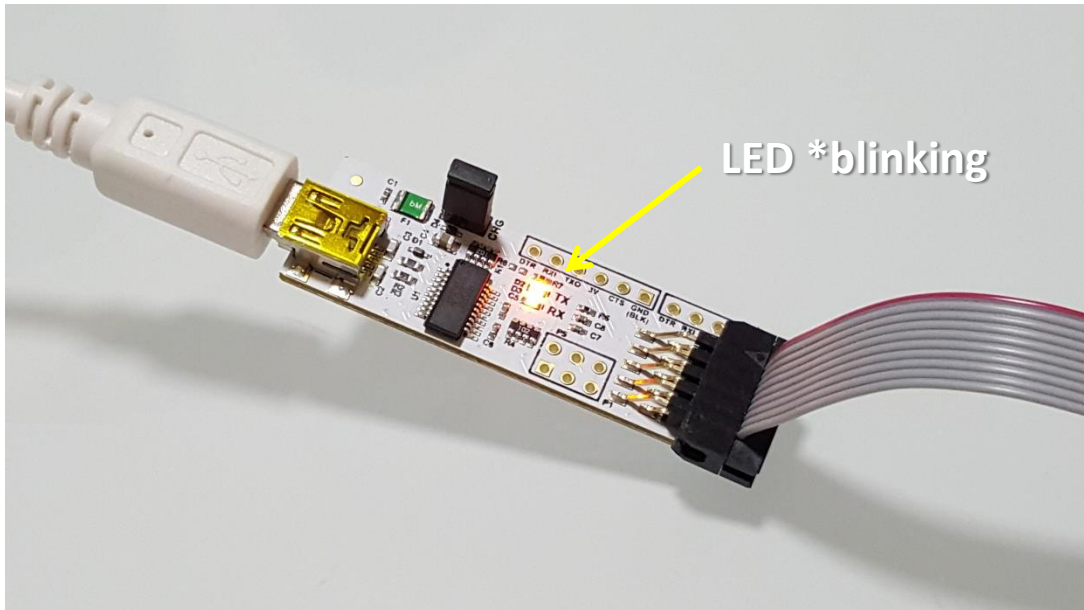
Click the arrow button to upload the sketch to your robot.



While the program is compiling the sketch, you will see the green progress bar at the bottom right of the Arduino IDE.



The LED on the programming adaptor should be blinking while compiling is in progress.



Once completed, you will hear a short beep on the robot and it will show “Done uploading” at the bottom of the Arduino IDE. Congratulations! You have successfully uploaded the sketch on your robot. **Enjoy and Have Fun!**

