



## BERTELLO GRANDE - USER MANUAL

\*Register your Oven at [www.Bertello.com](http://www.Bertello.com) then click the 'Registration' tab at the top of the page

Napoli LLC  
PO Box 397  
Afton, MN 55001  
651-333-3934  
[info@Bertello.com](mailto:info@Bertello.com)

Model: Bertello Grande

**DANGER**

If you smell gas:

- Shut off Gas to the appliance.
- Extinguish any open flame.
- Open lid.
- If odor continues, keep away from the appliance and immediately call your fire department.

Failure to follow these instructions could result in fire or explosion which could cause property damage, personal injury or death.

**DANGER**

- Never operate this appliance unattended.
- Never operate this appliance within 10 ft (3.0 m) of any structure, combustible material or other gas cylinder.
- Never operate this appliance within 25 ft (7.5 m) of any flammable liquid.
- If a fire should occur, keep away from the appliance and immediately call your fire department.  
Do not attempt to extinguish an oil or grease fire with water.
- Never allow oil or grease to get hotter than 400°F or 200°C. If the temperature exceeds 400°F (200°C) or if oil begins to smoke, immediately turn the burner or gas supply OFF.

Failure to follow these instructions could result in fire, explosion, or burn hazard which could cause property damage, personal injury or death.

This instruction manual contains important information necessary for the assembly and safe use of the appliance.

Read and follow all warnings and instructions before assembling and using the appliance.

Follow all warnings and instructions when using the appliance.

Keep this manual for future reference.

**WARNING:** Do not try to light this appliance without reading the "Lighting Instructions" section of this manual

**WARNING:** Follow all leak-check procedures carefully in this manual prior to oven operation.

THIS GAS APPLIANCE IS DESIGNED FOR OUTDOOR USE ONLY.

### **WARNINGS**

1. Never operate this appliance in enclosed areas.
2. Do not store a spare or disconnected liquid propane cylinder under or near the oven.
3. Improper assembly may be dangerous. Please follow the assembly instructions carefully.
4. After a period of storage, and/or nonuse, the Bertello Multi-Fueled Outdoor Pizza Oven should be checked for gas leaks and burner obstructions before use. See instructions in this manual for correct procedures.
5. Do not operate the oven if there is a gas leak present.
6. Do not sue a flame to check for gas leaks.
7. Do not put a oven cover or anything flammable on, or in the storage area under the barbecue.
8. Your Bertello Oven should never be used by Children. Accessible parts of the oven may be very hot. Keep young children away while it is in use.
9. You should exercise reasonable care when operating your Bertello Oven. It will be hot during cooking or cleaning and should never be left unattended, or moved while in operation.
10. Should the burners go out while in operation, turn all gas valves off. Open the back door hatch and wait five minutes before attempting to relight, using the lighting instructions.
11. Liquid propane gas is not natural gas. The conversion or attempted use of natural gas in a liquid propane unit or liquid propane gas in a natural gas unit is dangerous and will void your warranty.
12. Do not attempt to disconnect any gas fitting while your barbecue is in operation.
13. Use heat-resistant oven mitts or gloves when operating the oven.
14. Keep any electrical supply cord and the fuel supply hose away from any heated surfaces.
15. Do not use this oven unless all parts are in place. The unit must be properly assembled according to the

assembly instructions.

16. Do not build this model of grill in any built-in or slide in construction. Ignoring this Warning could cause a fire or an explosion that can damage property and cause serious bodily injury or death.
17. Use the pressure regulator and hose assembly that is supplied with your Bertello Oven.
18. Do not attempt to disconnect the gas regulator and hose assembly or any gas fitting while your Bertello Oven is in operation.
19. A dented or rusty liquid propane cylinder may be hazardous and should be checked by your liquid propane supplier. Do not use a liquid propane cylinder with a damaged valve.
20. Although your liquid propane cylinder may appear to be empty, gas may still be present, and the cylinder should be transported and stored accordingly.
21. If you see, smell or hear the hiss of escaping gas from the liquid propane cylinder:
  - Move away from the liquid propane cylinder.
  - Do not attempt to correct the problem yourself.
  - Call your fire department.
22. Do not use indoors. This oven is designed for outdoor use only. If used indoors, toxic fumes will accumulate and cause serious bodily injury or death.
23. Only use this oven outdoors in a well ventilated area. Do not use in garage, building, breezeway or any other enclosed area.
24. Do not use this oven under any overhead combustible construction.
25. Improper assembly may be dangerous. Please follow the assembly instructions in this manual. Do not use oven unless all parts are in place.
26. You should exercise reasonable care when operating your oven. It will be hot during cooking and should never be left unattended during use.
27. Do not leave infants, children or pets unattended near a hot oven.
28. Do not attempt to move a hot oven. Allow oven to cool before moving.
29. Do not wear clothing with loose flowing sleeves while lighting or using the oven.
30. Do not use oven in high winds.
31. Keep the oven on a secure, level surface at all times, clear of combustible material.
32. Oven mitts should always be worn while cooking and handling the back door hatch.
33. Keep the cooking area clear of flammable vapor and liquids, such as gasoline, alcohol, etc., and combustible

material.

34. The use of alcohol, prescription or non-prescription drugs may impair the consumer's ability to properly assemble or safely operate the oven.
35. This oven is not intended for and should never be used as a heater.
36. Combustion by-products produced when using this product contain chemicals known to the State of California to cause cancer, birth defects or other reproductive harm.
37. Do not attempt to move a hot oven. Allow oven to cool before moving.
38. Do not wear clothing with loose flowing sleeves while lighting or using the oven.
39. Do not use oven in high winds.
40. Keep the oven on a secure, level surface at all times, clear of combustible material.
41. Oven mitts should always be worn while cooking and handling the back door hatch.
42. Keep the cooking area clear of flammable vapor and liquids, such as gasoline, alcohol, etc., and combustible material.
43. This oven is not intended for and should never be used as a heater.
44. Combustion by-products produced when using this product contain chemicals known to the State of California to cause cancer, birth defects or other reproductive harm.
45. The installation must conform with local codes or , in the absence of local codes, with the *National Fuel Gas Code*, ANSI Z223.1/NFPA 54, Storage and Handling of *Liquefied Petroleum Gases*, ANSI/NFPA 58; or Natural Gas and Propane Installation Code, CSA B149.1; Propane Storage and Handling, CSA B149.2
46. The Oven shall not be used on or under any apartment or condominium balcony or deck;
47. The Oven shall be used only outdoors, and shall not be used in a building, garage, or any other enclosed area.
48. This appliance is not intended to be installed in or on a boat. This Oven is not to be installed in or on a recreational vehicle.
49. The minimum clearance shall be at least 10 ft (3 m) from any structure or combustible material.
50. Keep the fuel supply hose away from any heated surfaces.
51. This appliance is not intended for commercial use.
52. The use of alcohol, prescription, or non-prescription drugs may impair the consumer's ability to properly assemble or safely operate the appliance.
53. When cooking with oil or grease, have a type BC or ABC fire extinguisher readily available.

54. In the event of an oil or grease fire do not attempt to extinguish with water. Immediately call the fire department. A Typbe BC or ABC fire extinguisher may, in some circumstances contain the fire.
55. When cooking, the appliance must be on a level, stable noncombustible surface in an area clear of combustibile material. An asphalt surface (blacktop) may not be acceptable for this purpose.
56. Do not leave the appliance unattended. Keep children and pets away from the appliance at all times.
57. Do not move the appliance when in use. Allow the Oven to cool to 115 degrees F (45 C) before moving or Storing.
58. This appliance will be hot during and after use. Use insulated oven mitts or gloves for protection from hot surfaces or splatter from cooking liquids.

### **Maintenance Instructions**

1. Keep the appliance area clear and free from combustibile materials, gasoline, and other flammable vapors and liquids;
2. Do not obstruct the flow or combustion and ventilation air;
3. Keeping the ventilation opening (s) of the Oven free and clear from debris;
4. Visually checking burner flames, with pictorial representations;
5. cleaning appliance, including special surfaces;
6. checking and cleaning burner/venturi tubes for insects and insect nests. A clogged tube can lead to a fire beneath the appliance;
7. Contact Bertello via email: [info@Bertello.com](mailto:info@Bertello.com) for replacement parts if needed.

### **CAUTION**

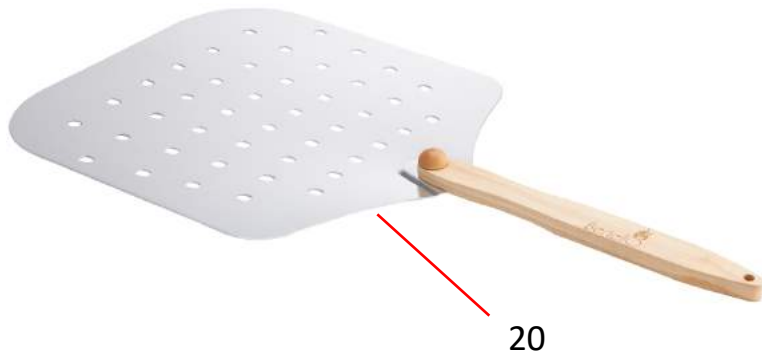
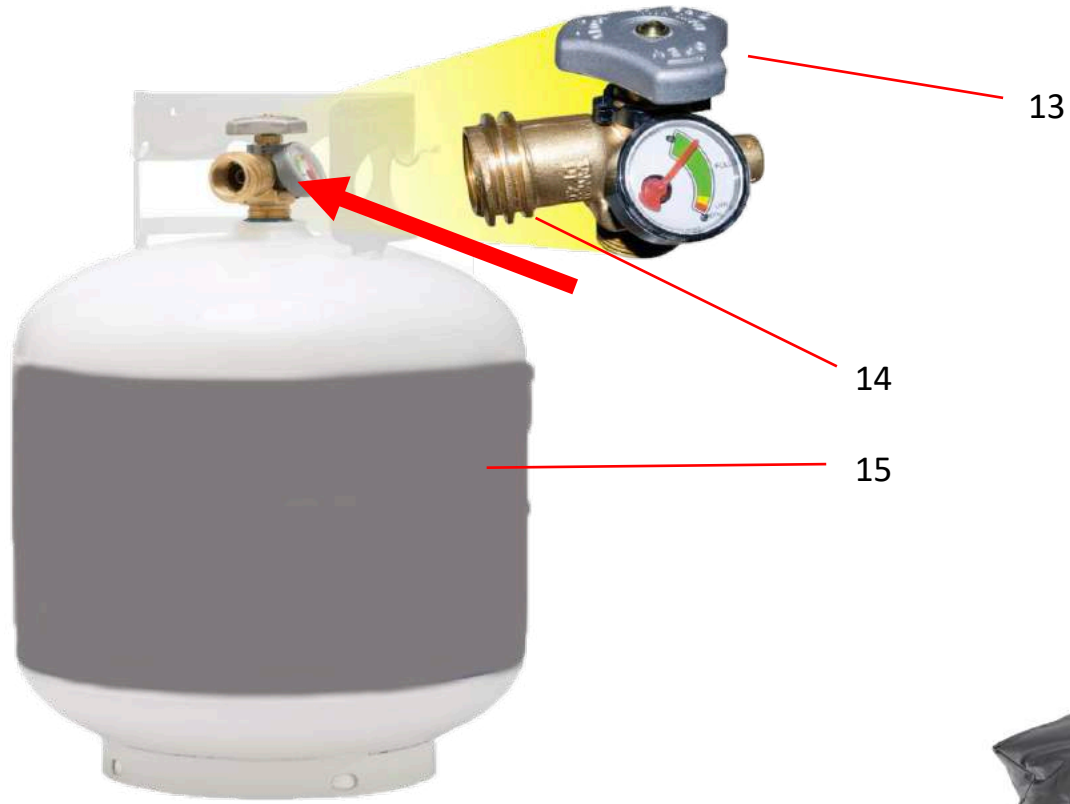
The oven should be thoroughly cleaned on a regular basis.

# PARTS LIST





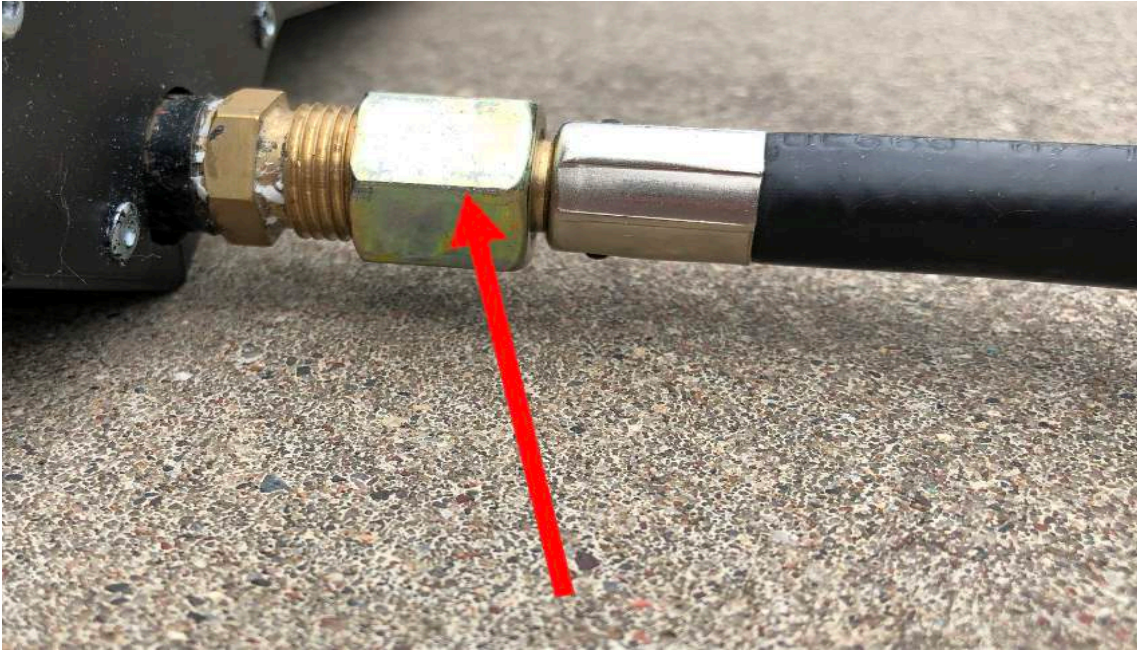




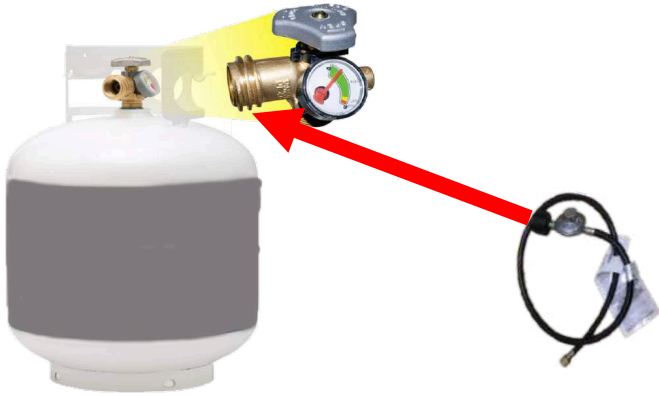
## PARTS LIST

1. Bertello Grande Oven
2. Removable fuel access door cover
3. Removable Gas Burner Attachment
4. Gas Burner Hose
5. Hose connector to propane tank
6. Removable baking stone
7. Wood Tray
8. Removable Vent Cover
9. Foldable oven legs
10. Front Opening of Oven
11. Mounting Holes
12. Burner Control Knob
13. Open/Close Valve
14. Propane Tank Connection (NOT INCLUDED)
15. Propane tank (NOT INCLUDED)
16. Allen Wrench
17. Flame Guard
18. Opening for Gas Burner
19. Baking stone pedestals
20. Pizza Peel
21. Weatherproof Cover

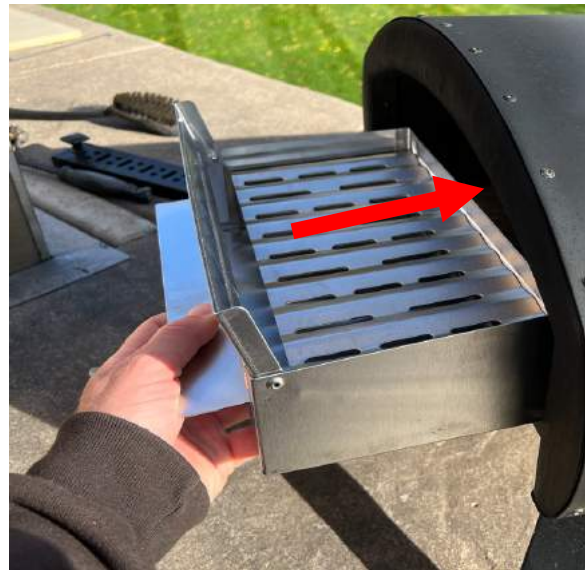
**STEP 1** Connect hose to gas burner with a wrench. Do not over tighten.



**STEP 2** Connect other end of hose to propane tank.



**STEP 3** Flip the flame guard in the vertical position, then slide Wood Tray into front of oven and towards the back, with the flame guard side facing the front of the oven.

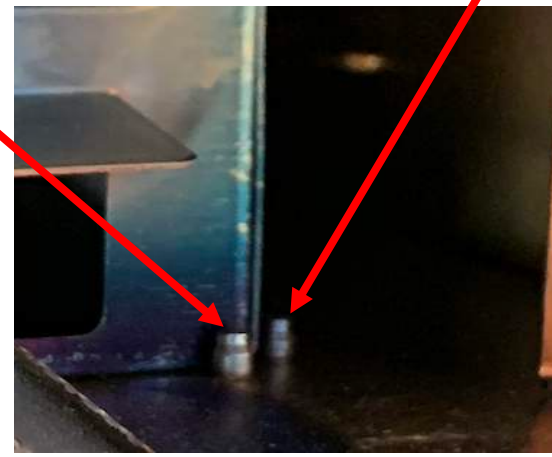
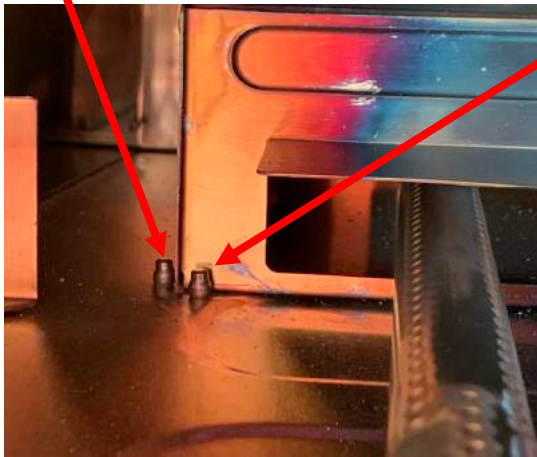
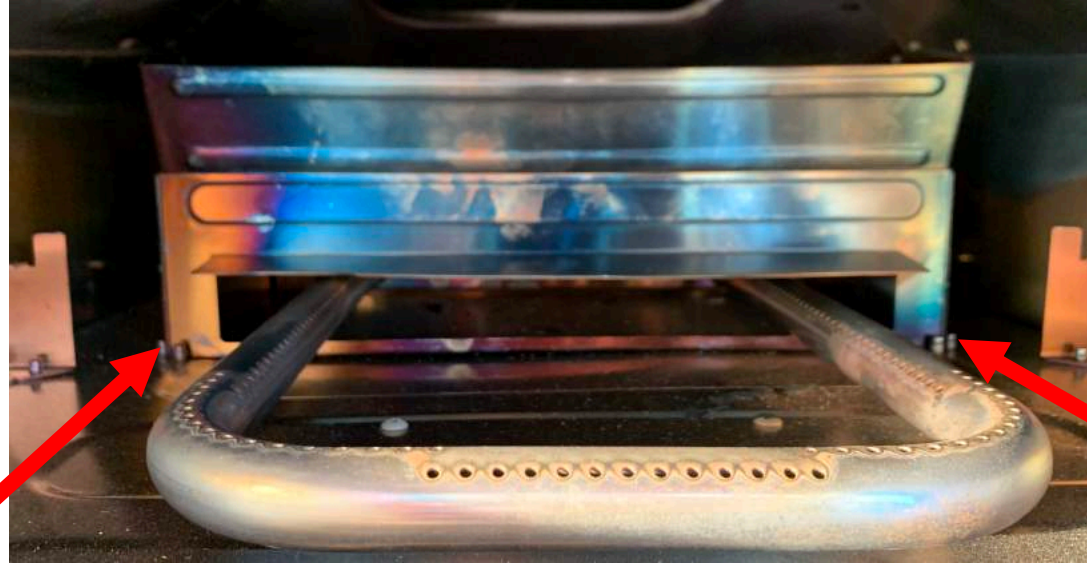


**STEP 4** Slide the Gas Burner into the back of the oven, and through the wood tray (which is already inside of the oven from Step 3).





**STEP 5** Position the wood tray so the front corners of the tray are snug against the rivets on each side.



**STEP 6** Install and tighten all 3 bolts with allen wrench





**STEP 7** Slide the pizza stone into the oven and place on top of the 4 pedestals



**STEP 8** Install removable vent cover onto front of oven



**STEP 9** Turn the knob to counter clockwise to the HIGH position while pushing the knob inwards. You will hear a click sound (which is the ignitor). Continue holding the knob inwards for 5 seconds. Holding the knob inwards for 5 seconds is required for the flame to stay lit. This is a safety feature.



**OFF POSITION**



**HIGH**



**LOW**



**STEP 10** If you cannot get the burner to ignite. Remove back access hatch and ignite manually with a long match or long lighter. Use heat resistant gloves for safety. To ignite manually, continue to hold knob in for 5 seconds while igniting and position knob in HIGH position.



\*We recommend preheating the oven with the gas burner on high for approximately 10-20 minutes, then turn the gas burner to low and add a few thick wood chunks just before cooking. Once you insert the pizza into the oven, do quarter rotations every 20-30 seconds.

## GENERAL INSTRUCTIONS

WARNING: Never store an extra (spare) LP cylinder under or near the Bertello Oven.

WARNING: The LP cylinder used with your Bertello Oven must be with a listed OPD (Overfilling Prevention Device) and a QCC1 or Type 1 CGA810) cylinder connection. The cylinder connection must be compatible with the Bertello Oven connection.

### STORAGE AND/OR NONUSE

- The gas must be turned off at The liquid propane cylinder then The Bertello Oven is not in use.
- When the Bertello Oven is stored indoors, the gas supply must be DISCONNECTED and the LP cylinder stored outdoors in a well-ventilated space.
- LP cylinder must be stored outdoors in a well -ventilated area out of reach of children. Disconnected LP cylinder must not be stored in a building, garage or any other enclosed area, out of the reach of children.
- When the LP cylinder is not disconnected from the Bertello Oven, the appliance and LP tank must be kept outdoors in a well-ventilated space.
- The pressure regulator and hose assembly supplied with the appliance must be used. Replacement pressure regulators and hose assemblies shall be those specified by the appliance manufacturer.
- The Bertello Oven should be checked for gas leaks and any obstructions in the burner tubes before using. (See Section: "Maintenance/Annual Maintenance).
- The cylinder supply system must be arranged for vapor withdrawal.
- The cylinder used, if in excess of 2.2 lb (1.00 kg) propane capacity, must include a collar to protect the cylinder valve.
- Do not store a spare LP gas cylinder under or near this appliance;
- never fill the cylinder beyond 80 percent full; and
- if these instructions are not followed exactly, a fire causing death or searious injury may occur.
- Place dust cap on cylinder valve outlet whenever the cylinder is not in use. Only install the type of dust cap on the cylinder valve outlet that is provided with the cylinder valve. Other types of caps or plugs may result in leakage of propane.

**CAUTION:** Do not use oven cleaner, abrasive cleansers (kitchen cleansers), cleaners that contain citrus products, or abrasive cleaning pads on barbecue or cart surfaces.

Inside cooking module - Brush any debris off of burner tubes. **DO NOT ENLARGE BURNER PORTS (OPENINGS).** Wash inside of cooking box with warm soapy water and a water rinse.

Stainless steel surfaces - Wash with a soft cloth and a soap and water solution. Be careful to scrub with the grain direction of the stainless steel.

Do not use cleaners that contain acid, mineral spirits or xylene. Rinse well after cleaning.

Preserve Your Stainless Steel - Your Bertello Oven is made from stainless steel. To keep the stainless steel looking its best is a simple matter. Clean it with soap and water, rinse with clear water and wipe dry. For stubborn particles, the use of a non-metallic brush can be used.

**IMPORTANT:** Do not use a wire brush or abrasive cleaners on the stainless steel surfaces of your Bertello Oven as this will cause scratches

## **GAS INSTRUCTIONS**

### **IMPORTANT LP CYLINDER INFORMATION**

Failure to follow these **DANGER** statements exactly may result in a fire causing death or serious injury.

### **DANGER**

**NEVER** Store a spare LP Cylinder under or near the Bertello Oven.

**NEVER** fill the tank beyond 80% full.

## **CONNECTING THE LIQUID PROPANE CYLINDER**

The Bertello Oven is to be used with a 20 lb propane tank.

All Bertello Oven liquid propane gas regulators are equipped with a UL-listed tank connection as per the latest edition of ANSI Z21.89. This will require a liquid propane tank that is similarly equipped with a Type 1 connection in the tank valve. This Type 1 coupling allows you to make a fast and totally safe hookup between your gas Bertello Oven and your liquid propane tank. It eliminates the chance of leaks due to a POL fitting that is not properly tightened. Gas will not flow from the tank unless the Type 1 coupling is fully engaged into the coupling.

**WARNING: Make sure that the LP cylinder valve is closed. Close by turning valve clockwise.**

### **DANGER:**

Do not use an open flame to check for gas leaks. Be sure there are no sparks or open flames in the area while you check for leaks. Sparks or flames will result in a fire or explosion which can cause serious bodily injury or death, explosion which can cause serious bodily injury or death, and damage to property.

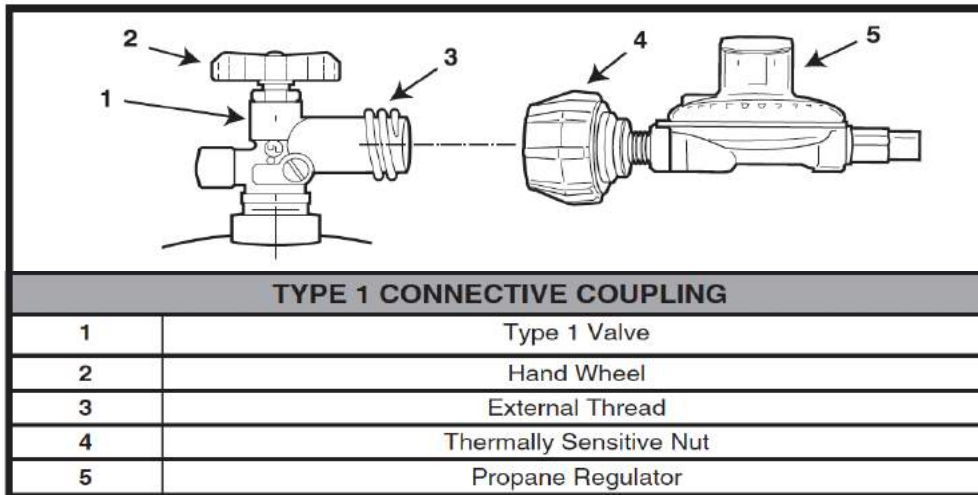
The proper filling methods for the filling of your cylinder are by weight or volume, as described in NFPA 58. Please make sure your filling station fills your LP cylinder by weight or volume. Ask your filling station to read purging and filling instructions on the LP cylinder before attempting to fill.



## PROCEDURE FOR GAS LEAK TESTING

### CHECK THAT ALL BURNER VALVES ARE OFF

Valves are shipped in the “OFF” position, but you should check to be sure that they are turned off. Check by pushing down and turning clockwise. If they do not turn, they are off. Proceed to the next step. If they do turn continue turning them clockwise until they stop, then they are off. Proceed to the next step.



To connect the hose to the propane tank:

Screw the regulator coupling onto the tank valve, clockwise, or to the right. Hand tighten only.

Note: This is a new type of connection. It tightens clockwise and will not allow gas to flow unless the connection is tight. The connection requires tightening by hand only.

**WARNING: Do not use a wrench to tighten the connection. Using a wrench could damage the regulator coupling and could cause a leak.**

You will need: LP cylinder, a soap and water solution and a rag or brush to apply it.

1) Mix soap and water.

2) Turn on the cylinder valve.

3) Check for leaks by wetting the fitting with the soap and water solution and watching for bubbles. If bubbles form, or if a bubble grows, there is a leak.

If there is a leak, turn off the gas and tighten the fitting. Turn the gas back on and recheck with the soap and water solution.

If the leak does not stop, do not use your Bertello Oven.

4) When leak checking is complete, turn gas supply OFF at the source and rinse the connections with water.

#### **DANGER**

Do not use an open flame to check for gas leaks. Be sure there are no sparks or open flames in the area while you check for leaks. Sparks or open flames will result in a fire or explosion, which can cause serious bodily injury or death and damage to property.

**WARNING: You should check for gas leaks every time you disconnect and reconnect a gas fitting.**

**WARNING: Do not ignite burners when leak checking.**

Check for leaks by wetting the connections with the soap and water solution and watching for bubbles. If bubbles form or if a bubble grows, there is a leak.

**WARNING: If there is a leak at connections turn OFF the gas. DO NOT OPERATE THE OVEN.**

When leak checks are complete, turn gas supply OFF at the source and rinse connections with water.

#### **REFILLING THE LIQUID PROPANE CYLINDER**

We recommend that you refill the LP cylinder before it is completely empty.

Removal of the LP cylinder

- 1) Close cylinder valve (turn clockwise).
- 2) Unscrew regulator coupling by turning counterclockwise, by hand only.

To fill, take the LP cylinder to a gas propane dealer, or look up “gas-propane” in the phone book for other sources of LP gas.

**WARNING: We recommend that your LP cylinder be filled at an authorized LP gas dealer, by a qualified attendant who fills the cylinder by weight. IMPROPER FILLING IS DANGEROUS.**

**CAUTION: Place dust cap on cylinder valve outlet whenever the cylinder is not in use. Only install the type of dust cap on the cylinder valve outlet that is provided with the cylinder valve. Other types of caps or plugs may result in leakage of propane.**

#### **SAFE HANDLING TIPS FOR LIQUID PROPANE GAS CYLINDERS**

- Liquid Propane (LP) gas is a petroleum product as are gasoline and natural gas. LP gas is a gas at regular temperatures and pressures. Under moderate pressure, inside a cylinder, LP gas is a liquid. As the pressure is released, the liquid readily vaporizes and becomes gas.
- LP gas has an odor similar to natural gas. You should be aware of this odor.
- LP gas is heavier than air. Leaking LP gas may collect in low areas and prevent dispersion.
- To fill, take the LP cylinder to a gas propane dealer, or look up “gas-propane” in the phone book for other sources of LP gas.

**WARNING: We recommend that your LP cylinder be filled at an authorized LP gas dealer, by a qualified attendant, who fills the tank by weight. IMPROPER FILLING IS DANGEROUS.**

- Air must be removed from a new LP cylinder before the initial filling. Your LP dealer is equipped to do this.
- The LP cylinder must be installed, transported and stored in an upright position. LP cylinders should not be dropped or handled roughly.
- Never store or transport the LP cylinder where temperatures can reach 125° F (too hot to hold by hand - for example: do not leave the LP cylinder in a car on a hot day).

Note: A refill will last about 18-20 hours of cooking time at normal use. The fuel scale will indicate the propane supply so you can refill before running out. You do not have to run out before you refill.

- Treat “empty” LP cylinders with the same care as when full. Even when the LP tank is empty of liquid there still may be gas pressure in the cylinder. Always close the cylinder valve before disconnecting.

**CAUTION: Place dust cap on cylinder valve outlet whenever the cylinder is not in use. Only install the type of dust cap on the cylinder valve outlet that is provided with the cylinder valve. Other types of caps or plugs may result in leakage of propane.**

- Do not use a damaged LP cylinder. Dented or rusty LP cylinders or LP cylinders with a damaged valve may be hazardous and should be replaced with a new one immediately.

### **Liquid Propane (LP) Cylinder(s)**

- The joint where the hose connects to the LP cylinder must be leak tested each time the LP cylinder is reconnected. For example, test each time the LP cylinder is refilled.

- Be sure the regulator is mounted with the small vent hole pointed downward so that it will not collect water. This vent should be free of dirt, grease, bugs etc.

**WARNING: Replacement LP tanks must match the regulator connection supplied with this Oven.**

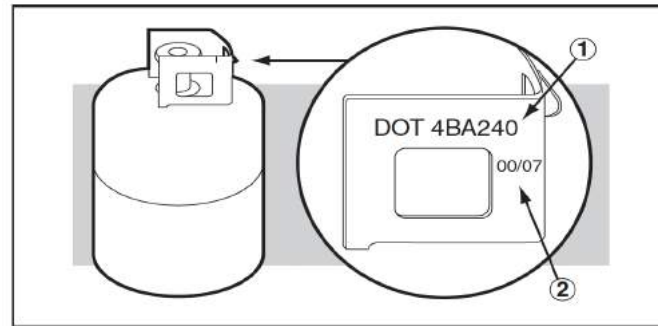
### **LIQUID PROPANE CYLINDER REQUIREMENTS**

- Check to be sure cylinders have a D.O.T. certification (1), and date tested (2) is within five years. Your LP gas supplier can do this for you.
- All LP tank supply systems must include a collar to protect the cylinder valve.
- The LP cylinder must be a 20-lb. size approximately (18¼ inches high, 12¼ inches in diameter).
- The cylinder must be constructed and marked in accordance with the Specifications for LP - Gas Cylinders of the U.S. Department of Transportation (D.O.T.) or the National Standard of Canada, CAN/CSA-B339, Cylinders, Spheres and Tubes or Transportation of Dangerous Goods; and Commission, as applicable.

## IN CANADA

### LIQUID PROPANE CYLINDER REQUIREMENTS

Note: Your retailer can help you match a replacement tank to your Bertello Oven.  
The LP cylinder must be constructed and marked in accordance with the specifications for LP gas cylinders, T.C.



### LIGHTING

#### DANGER

Failure to wait 5 minutes to allow the gas to clear if the Bertello Oven does not light, may result in an explosive flame-up which can cause serious bodily injury or death.

#### WARNING

Check hose before each use of barbecue for nicks, cracking, abrasions or cuts. If the hose is found to be damaged in any way, do not use the barbecue.

#### WARNING

The burner control knobs must be in the OFF position before turning on the liquid propane cylinder tank

valve.

1. Turn the cylinder on by slowly turning the cylinder valve counterclockwise.
2. Turn the BURNER control knob to START/HI
3. You will hear the electronic ignition sparking.
4. Check that the burner is lit by looking through the front of the oven or through the

#### **TO EXTINGUISH**

Turn burner control knob clockwise to the OFF position. Turn the gas supply OFF at the source.

#### **WARRANTY**

3 Year Warranty

If you have any issues with your oven, please contact us at [info@Bertello.com](mailto:info@Bertello.com)