

BASIC CARBON

BC99953 and BC99954 installation guide

This document is to be used as a guide only. Owners should take full responsibility and risk when undertaking work on their vehicle.



Tools Required:

- 10mm Spanner or Socket
- Towel / Cloth
- T20 Torx with suitable extension and ratchet
- Long flat head screwdriver or T30 screwdriver
- Small pick (small Philips or Allen key)

Please ensure you check the contents and condition of the package prior to installation.

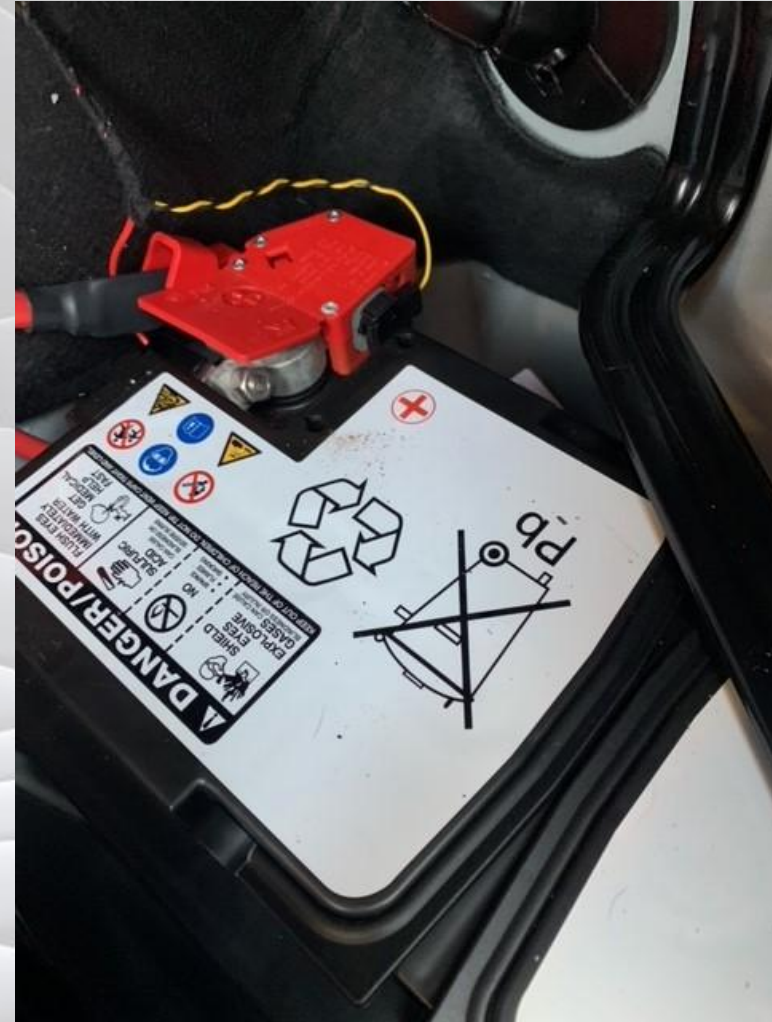


Step 1

In the boot, remove the plastic panel to gain access to the battery. Use the 10mm socket or spanner to undo the battery terminal.

Use the cloth to cover the terminal to prevent an unexpected connection.

Ensure that the boot does not close whilst the battery is disconnected as this could cause you to be locked out of the boot.



Step 2

Using the flathead or T30 screwdriver, insert into the steering wheel to push the spring clip to release the airbag. This needs to be done on either side of the steering, (4 o'clock and 8 o'clock positions).

Once one side is released move to the other side and release the second clip.

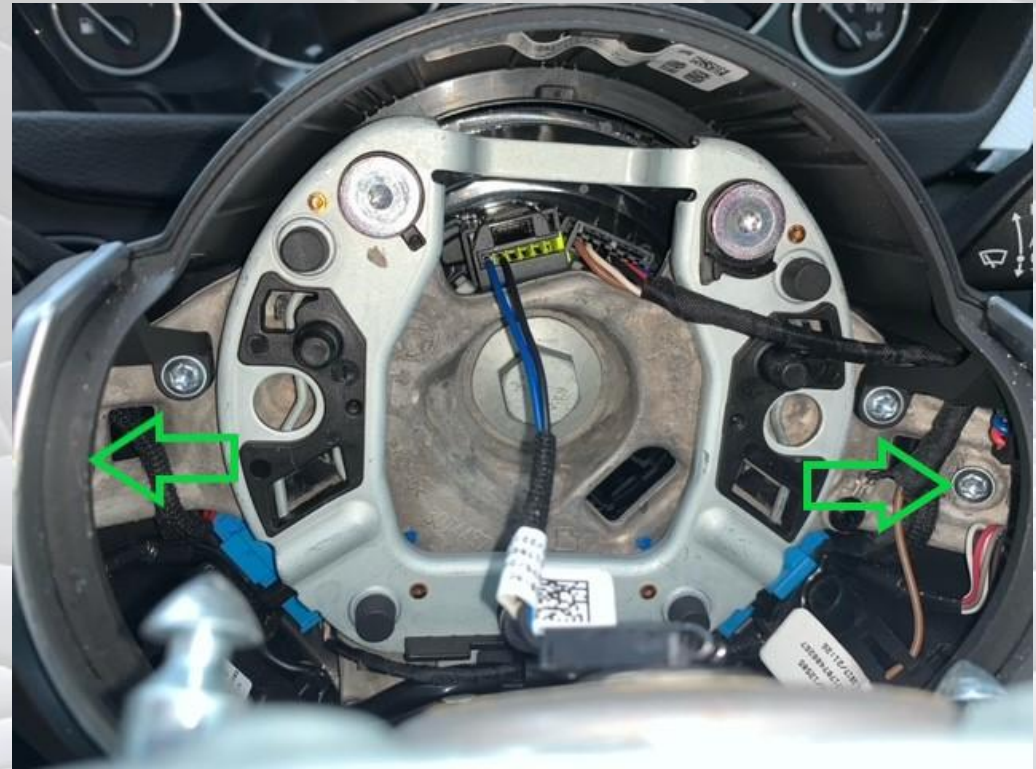
In the second image you can see inside the steering wheel how the screwdriver is pushing against the spring clip.



Step 3

Either unplug the airbag or place safely on top of the steering column out of the way.

Working on one side first, use the T20 to remove the paddle screw. Hold the paddle so that it does not fall out. This will release the paddle from the rear of the steering wheel.



Step 4

Using the small pick, push the pin out which holds the control/mount assembly together. The pin needs to be fully removed and set aside.

Unhook and slide the black plastic mount from the silver paddle itself. (paddle slides towards the steering wheel and the black mount away from the steering wheel to unhook)

Be careful to ensure you do not drop or lose the spring and parts from inside the control/mount. These can be reassembled if they do drop out.

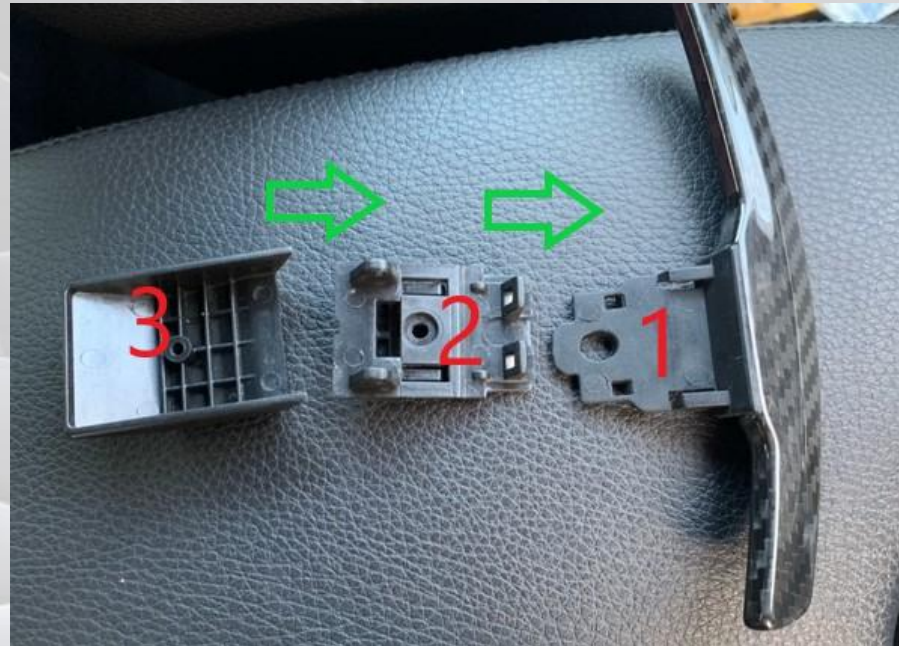


Step 5

Using the new mounting equipment slide part no.2 into the paddle, and then slide part no.3 into this to complete the paddle and mounting assembly.

Using one of the supplied screws, firmly tighten this into the mount so that the assembly is firmly secured.

The finished paddle should look like the second picture.



Step 6

Re-assemble the control unit to the new paddle. And re-insert the pin. (reverse of step 4)

The pin has a domed end, this side needs to be inserted first.

Feed the wire back through the steering wheel, then locate and mount the new paddle to the wheel.

Re-insert and tighten the T20 to secure the paddle to the steering wheel.

Now move to the other side and repeat the process for the second paddle.



Step 7

Once both paddles are fitted, re-fit the airbag and push back into the spring clips until its fully secured and clicks into place.

Reconnect the battery terminal.

Enjoy.

