

SANGEETA / MUSTARD ON NATURAL



filling spaces



FABRIC WIDTH

PATTERN: SANGEETA

COLOR: MUSTARD ON NATURAL

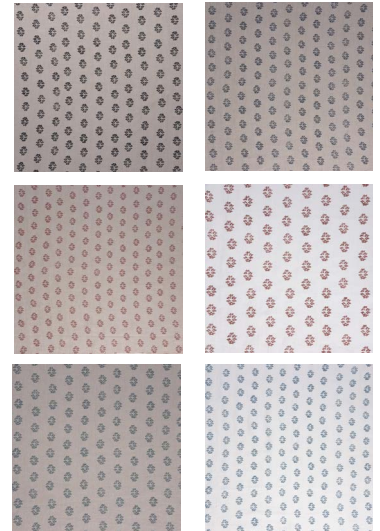
CONTENT: LINEN

WIDTH: 54"

REPEAT: 7"W X 7"H

USAGE: DRAPERY & LIGHT UPHOLSTERY

TECHNIQUE: BLOCK PRINT



Slight variations may occur as this product is hand block printed in small batches. Exact repeat & pattern alignment cannot be controlled and small imperfections may exist. Smudges and spots are often present. We do not consider these flaws, but, rather, highlights of the handmade nature of this fabric.

Our hand block printed fabrics are printed in batches of 10 yards. If you order more than 10 yards of block printed fabric, you will receive your order in more than one piece.

All our fabrics are made to order, if the item is not in stock when you place your order it may take up to 3-4 weeks for delivery.

CARE INSTRUCTIONS: Machine wash on the delicate cycle. Wash separately & do not mix with other laundry. Tumble drying, bleach & soaking are not recommended. Iron on medium setting if necessary. Keep out of direct sunlight to avoid excessive fading.

For trade pricing and shipping information please email info@fillingspaces.com