

## WARRANTY

### AQUATOP 90 DAY LIMITED WARRANTY

Products are warranted by AQUATOP Aquatic Supplies to the original purchaser against defective material and workmanship under normal use for a period of 90 days from the date of the original purchase. Products have no warranty if:

- 1.) The product has been serviced, modified or tampered with by anyone other than AQUATOP Aquatic Supplies,
- 2.) The product has been abused or damaged (including broken or cracked bulbs), and/or
- 3.) The product has been transported without proper packaging.

### WARRANTY LIABILITY DISCLAIMER

In no event will Aquatop® be liable for any consequential or incidental damages, including but not limited to, lost sea life, personal injury, property damage, equipment damage, lost profits, lost wages, lost savings, lost income, etc., arising out of the use of any Aquatop® product.

For more information on tank health and maintenance as well as other products carried by Aquatop, visit our website: [www.aquatop.com](http://www.aquatop.com)

VI /2015

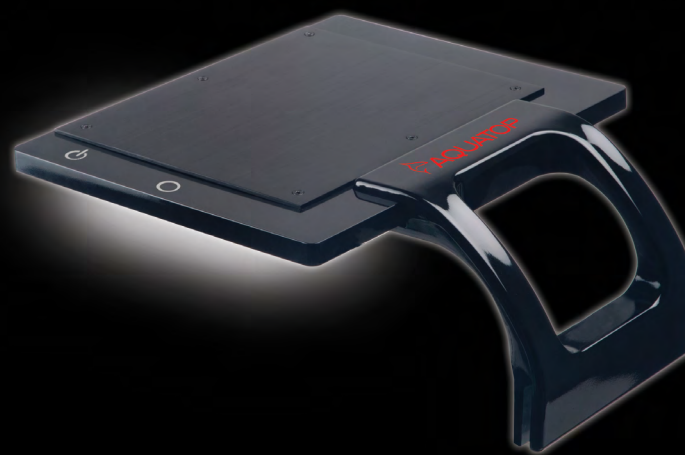
775 Columbia St. Brea, CA 92821  
Tel: (888) 915-27821 (562) 697-9860  
[www.aquatop.com](http://www.aquatop.com)



[aquatop.com](http://aquatop.com)



## NANO LED SERIES



NANO LED SERIES Manual 2015

Thank you for choosing NANO LED series as your LED lighting system. Aquatop's NANO LED Series of LED lighting raises the bar for aquarium keepers by combining style and technology. This specially engineered LED lighting system mimics natural sunlight while producing minimal heat. The series offers full spectrum LEDs and includes the Nano TR2 for reef systems and the Nano TP2 for planted tanks.

- Excellent for planted and reef systems
- Designed especially for nano aquariums
- Supports photosynthetic life
- Replicates peak sunlight
- Compact and easy to install
- Integrated Touch Control

Bringing innovation to the aquarium industry, Aquatop's Nano TP2 and TR2 LED lighting systems ensure an even distribution of usable light for aquatic organisms. Combining outstanding performance, low energy cost and a unique low-profile design, the Parology Series is a significant advancement in LED lighting design.

- Advanced LED technology and product design
- Provides an even distribution of usable light
- Operates cool, quiet and fanless
- Low heat transference
- Bonus weather simulation features included w/ Remote Control

## WARNINGS & SAFETY

### READ ALL SAFETY INSTRUCTIONS BEFORE USE.

To guard against injury, basic safety precautions should be observed, including the following:

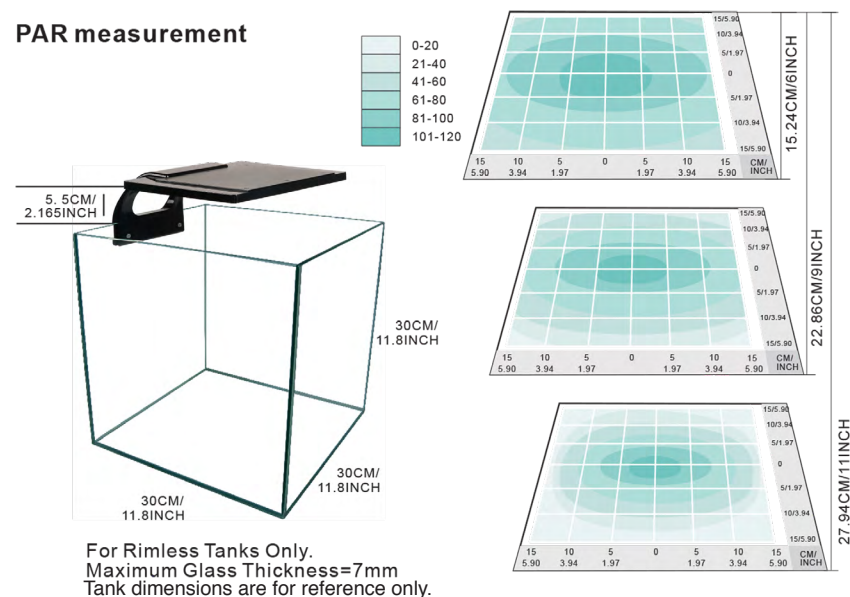
#### **DANGER**

To avoid possible electric shock, special care should be taken since water is employed around the use of this product. For each of the following situations, do not attempt to repair yourself: return the appliance to an authorized service facility for service or discard the appliance.

**NOTE:** It is your sole responsibility to verify that the plug and the receptacle are clean and free of moisture and salt buildup at all times. The receptacle must be free of water, salt, calcium, magnesium and dust. Failure to do so can cause fire, damage to property, and permanent damage to the product and personal injury not limited to loss of life.

**NOTE:** Before installing the unit, check for any signs of damage to the device. If there are any signs of damage to the device, power cable or plug, do not use and return to place of original purchase.

### PAR measurement



## PRODUCT SPECIFICATIONS

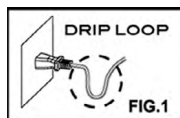
| Model                    | NANO-TP2  | NANO-TR2  |
|--------------------------|-----------|-----------|
| Input Voltage            | 100V-240V | 100V-240V |
| LED                      | 11W       | 11W       |
| Color Temp for White LED | 6500K     | 12000K    |
| Wave length for Blue LED |           | 450-465NM |
| Lumens                   | 1000LM    | 790LM     |

## TROUBLESHOOTING

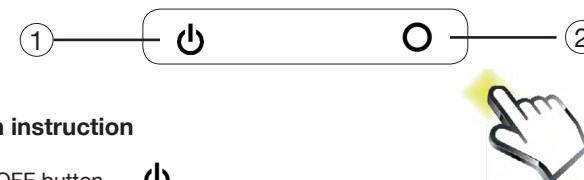
| Problem                         | Check  | Solution  |
|---------------------------------|--|---|
| The light does not work         | Check for any damage to the power supply and power cord.     | If damage is found, please return to the original place of purchase.                    |
|                                 | Check the power supply connection to ensure a snug fit.      | Make sure that the power supply is connected securely to the unit.                      |
|                                 | Check if the unit is turned off.                             | Use the power Button on the remote control or on the light fixture to turn the unit on. |
| Remote controller does not work | Check to see if the battery protection tab has been removed. | Remove the battery protection tab.  |
|                                 | The battery may need to be replaced.                         | Replace the battery.  |

**NOTE:** Never put the unit inside the aquarium or immerse in water. It is your sole responsibility to verify that the plug and the receptacle are clean and free of moisture and salt build up at all times. The receptacle must be free of water, salt, calcium, magnesium and dust. Failure to do so can cause fire, damage to property, and permanent damage to the product and personal injury not limited to loss of life.

- Read and follow all instructions.
- A drip loop must be used with all electrical aquarium devices.
- A drip loop is a self-made part of the cord hanging below the receptacle. (See fig. 1)



1. A GFCI (ground fault circuit interrupter) should be used in the branch circuit supplying all power to water pumps and electrical aquarium equipment. If you do not have a GFCI, we strongly recommend having a qualified electrician install one prior to operating any aquarium component.
2. Do not plug into extension cord/power strip.
3. Use this product for its intended purpose only.
4. Never yank or pull the cord from the electrical outlet.
5. Do not operate if the plug or wire is damaged.
6. Verify that hands are dry prior to disconnecting the power.
7. To reduce the risks of electrocution, keep all connections dry.
8. Make sure to unplug all electrical aquarium devices before installing the unit or performing any type of maintenance on the unit.
9. Before cleaning the unit unplug from power source. Use a clean damp cloth. Let unit completely dry before plugging back into power source.
10. For indoor use only.
11. If any of the electrical components get wet, unplug immediately.
12. Do not use soaps or detergents when cleaning the exterior surface of this device.
13. Make sure the device is completely dry before connecting.
14. Keep this product away from children and those who are unfamiliar with the unit and its instruction manual.



## Touch switch instruction

1. Power ON / OFF button

Press once – ON , twice – Off

2. Brightness control button

Press this button to adjust white & blue brightness from 1 to 5 modes circularly

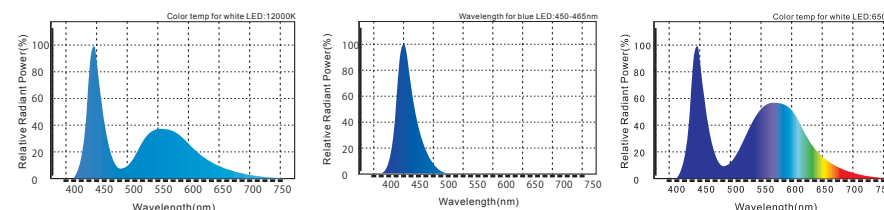
## NANO-TP2

| Mode | White Intensity (%) | Color Mix (%) |
|------|---------------------|---------------|
| 1    | 0                   | 10            |
| 2    | 0                   | 100           |
| 3    | 10                  | 100           |
| 4    | 30                  | 100           |
| 5    | 100                 | 100           |

## NANO-TR2

| Mode | White Intensity (%) | Blue Intensity (%) |
|------|---------------------|--------------------|
| 1    | 0                   | 10                 |
| 2    | 0                   | 100                |
| 3    | 10                  | 100                |
| 4    | 30                  | 100                |
| 5    | 100                 | 100                |

# COLOR SPECTRUM



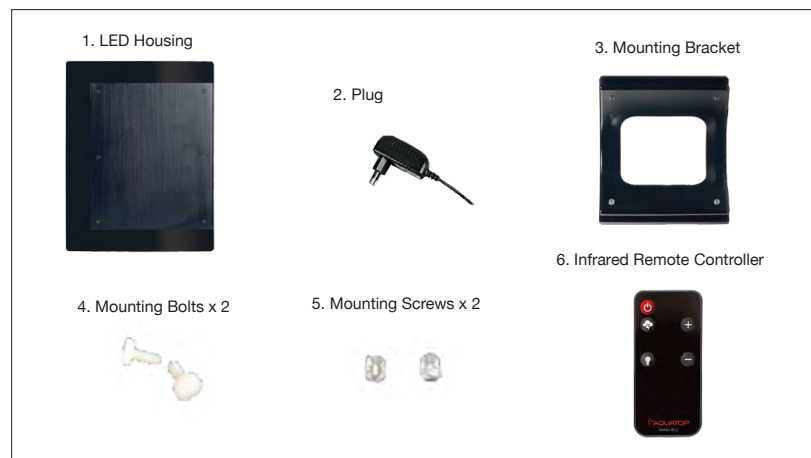
## LIGHT

Aquatop's Nano LED Series emits photosynthetic support for a variety of aquatic organisms. The Nano TR2 is ideal for marine organisms such as mushrooms, Zoanthids and soft coral while the Nano TP2 is well suited for freshwater plants such as Anubias, crypts, mosses and most stemming plants.

- Supports low to medium light-loving photosynthetic life
- TR2 color temp for white LED equals 12000K
- TP2 color temp for white LED equals 6500K
- Wavelength for blue LED: 450-465nm ( TR2 )
- Add light and beauty to a variety of ecosystems

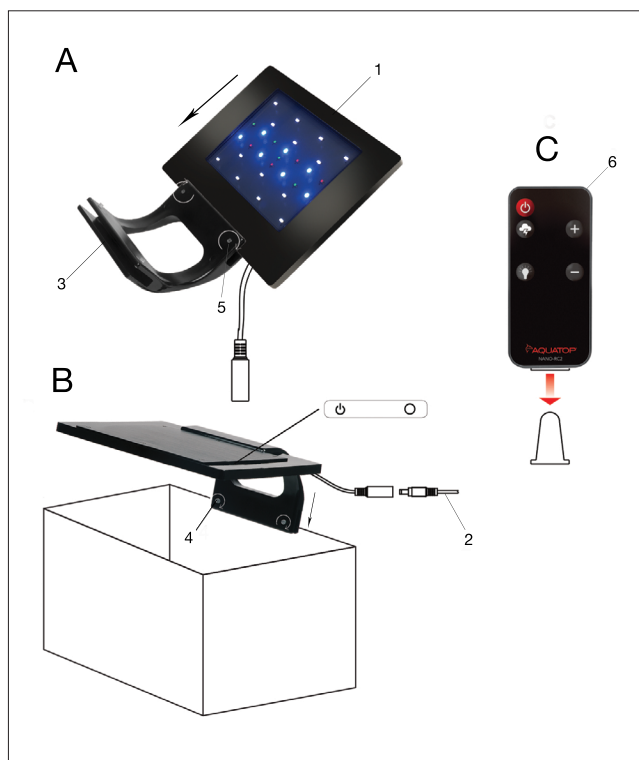
## PACKAGE CONTENTS

Please check the contents in the package



NOTE: If extra Mounting Bolts and / or Screws are included. Please save as replacement parts.

## HARDWARE ASSEMBLY & INSTALLATION

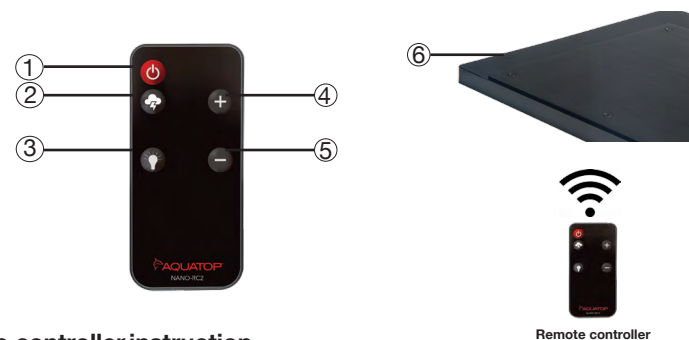


### Required tools

Flathead Screwdriver with small tip

- Attach the Mounting Bracket to the LED Housing with the Mounting Screws. Use a small Flathead Screwdriver to fasten and tighten down the Mounting Screws.
- Attach the Mounting Bracket and LED Housing to the chosen aquarium panel with Mounting Bolts. Fasten and tighten down the Mounting Bolts by hand.
- Please remove the battery protection tab before you use the remote controller.

## INFRARED REMOTE CONTROLLER



### Remote controller instruction

#### 1. Power ON / OFF button

Press once to turn the unit on. Press again to turn off.

#### 2. Weather mode button

Press this button once to enter Lightning mode, and again to enter Cloud mode, By pressing the "+" / "-" buttons, you can adjust the frequency of lightning / cloud.

#### 3. Light button

Press this button to enter the Brightness mode setting. By pressing "+" / "-" button, you can adjust the brightness of white light. Press this button again to adjust the brightness of blue light by "+" / "-" button. The light button can be pressed for multiple times to alternate between white / blue light adjustment.

#### 4. "+" button

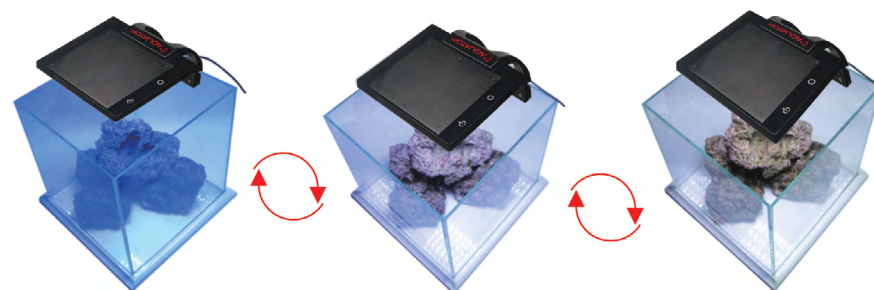
In the Brightness mode: Increase the brightness of blue / white by pressing "+".  
In the weather mode: Enhance the lightning / cloud frequency by pressing "+".

#### 5. "-" button

In the Brightness mode: Decrease the brightness of blue / white by pressing "-".  
In the weather mode: Reduce the lightning / cloud frequency by pressing "-".

#### 6. Receiver

The remote control should face toward the receiver to control functions of the light.



### Memory Function

Memory function is designed to save all of your settings after idling for 10 seconds.