



**Cable ID: KJ-C8-CAT8-NEW**

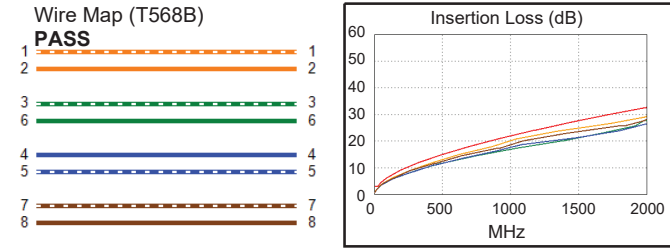
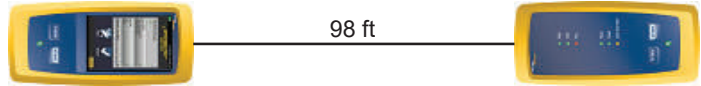
Date / Time: 03/20/2020 09:31:12 AM  
 Headroom 11.1 dB (NEXT 4,5-7,8) Test  
 Limit: TIA Cat 8 Channel  
 Cable Type: Cat 8 S/FTP  
 NVP: 74.0%

Software Version: V6.5 Build 5  
 Limits Version: V7.5  
 Calibration Date  
 Main (Module): 12/18/2019  
 Remote (Module): 12/18/2019

**Test Summary: PASS**

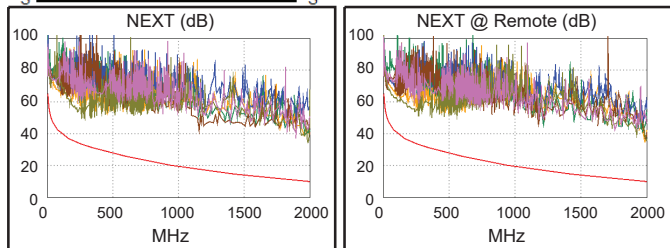
Model: DSX-8000  
 Main S/N: 1706385  
 Remote S/N: 1707022  
 Main Adapter: DSX-CHA804  
 Remote Adapter: DSX-CHA804

Length (ft), Limit 98	[Pair 7,8]	98
Prop. Delay (ns), Limit 179	[Pair 1,2]	137
Delay Skew (ns), Limit 17	[Pair 1,2]	2
Resistance (ohms), Limit 6.40	[Pair 4,5]	3.48
Resist. Unbal. (ohms), Limit 0.200	[Pair 4,5]	0.044
Resist. P2P Unbal. (ohms), Limit 0.200	[Pair 3,6-4,5]	0.016
Insertion Loss Margin (dB)	[Pair 1,2]	3.4
Frequency (MHz)	[Pair 1,2]	2000.0
Limit (dB)	[Pair 1,2]	32.7

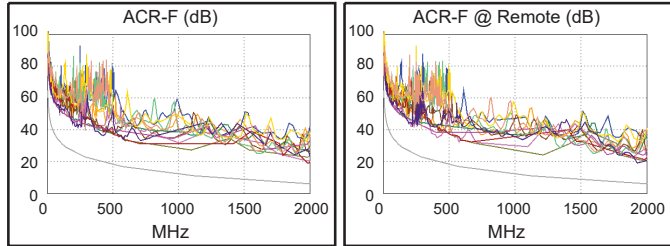


Worst Case Margin Worst Case Value

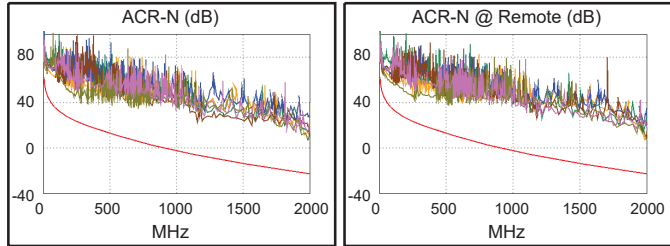
PASS	MAIN	SR	MAIN	SR
Worst Pair	4,5-7,8	4,5-7,8	3,6-7,8	1,2-3,6
<b>NEXT (dB)</b>	11.2	11.1	24.6	25.0
Freq. (MHz)	1.0	1.0	1984.	1984.
Limit (dB)	65.0	65.0	9.9	9.9
Worst Pair	7,8	4,5	3,6	3,6
<b>PS NEXT (dB)</b>	13.8	13.8	25.9	24.5
Freq. (MHz)	1.0	1.0	1984.	1986.
Limit (dB)	62.0	62.0	7.4	7.4



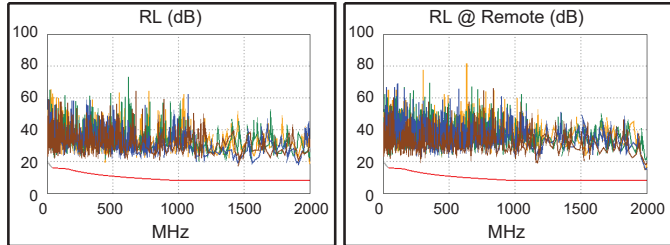
PASS	MAIN	SR	MAIN	SR
Worst Pair	4,5-7,8	7,8-4,5	3,6-7,8	3,6-7,8
<b>ACR-F (dB)</b>	8.9	8.9	12.0	12.3
Freq. (MHz)	1.0	1.0	1926.	1918.
Limit (dB)	65.0	65.0	6.3	6.3
Worst Pair	7,8	7,8	7,8	3,6
<b>PS ACR-F (dB)</b>	11.6	11.7	14.1	13.8
Freq. (MHz)	1.0	1.0	1926.	1972.
Limit (dB)	62.0	62.0	3.3	3.1



N/A	MAIN	SR	MAIN	SR
Worst Pair	4,5-7,8	4,5-7,8	3,6-7,8	1,2-3,6
<b>ACR-N (dB)</b>	13.7	13.6	29.4	29.7
Freq. (MHz)	1.0	1.0	1984.	1984.
Limit (dB)	62.0	62.0	-22.6	-22.6
Worst Pair	7,8	4,5	3,6	3,6
<b>PS ACR-N (dB)</b>	16.3	16.3	30.6	29.2
Freq. (MHz)	1.0	1.0	1984.	1986.
Limit (dB)	59.0	59.0	-25.1	-25.1



PASS	MAIN	SR	MAIN	SR
Worst Pair	7,8	4,5	4,5	4,5
<b>RL (dB)</b>	8.6	6.9	10.3	6.9
Freq. (MHz)	52.8	1990.	1912.	1990.
Limit (dB)	16.0	8.0	8.0	8.0



Compliant Network Standards:  
 10BASE-T      100BASE-TX      100BASE-T4  
 1000BASE-T    2.5GBASE-T      5GBASE-T  
 10GBASE-T    25GBASE-T      40GBASE-T  
 ATM-25      ATM-51      ATM-155  
 100VG-AnyLan    TR-4      TR-16 Active  
 TR-16 Passive