

Assembly Instructions

Heavy Duty Rivet Shelving

Tools required:

- Hammer or Rubber Mallet.

Recommendations:

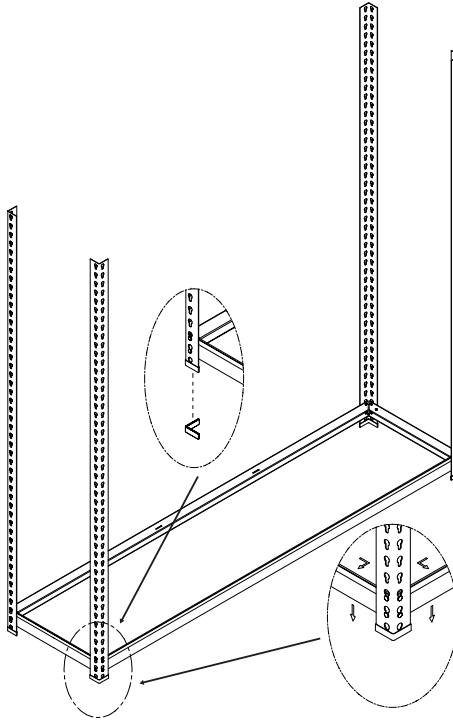
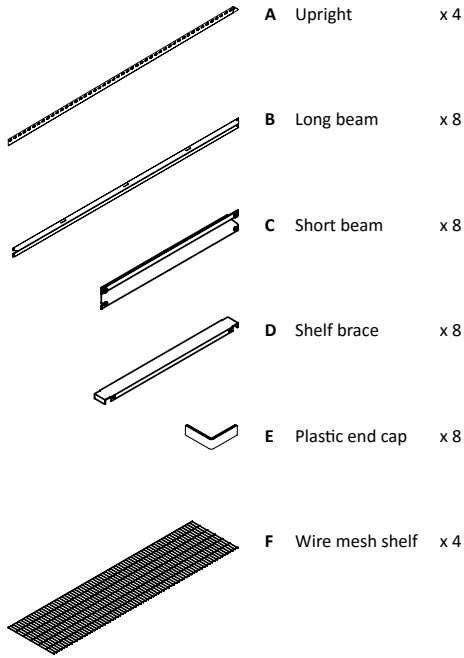
- Use a cloth or wooden block to protect components when hammering.
- Hammer gently to avoid component damage.
- Assembly is recommend with two people.

Caution:

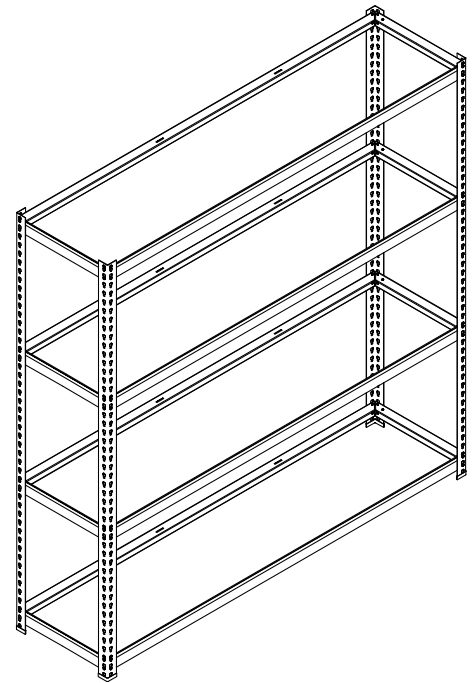
- Wear gloves during assembly.
- Handle components with care due to possible sharp corners.
- Assemble the unit on a solid, level surface.

Parts List

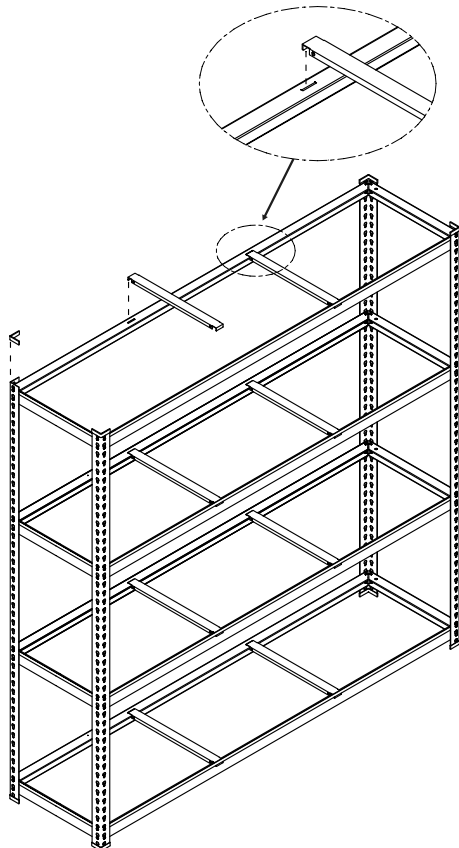
Please read completely through these instructions and verify that all parts are present before beginning assembly.



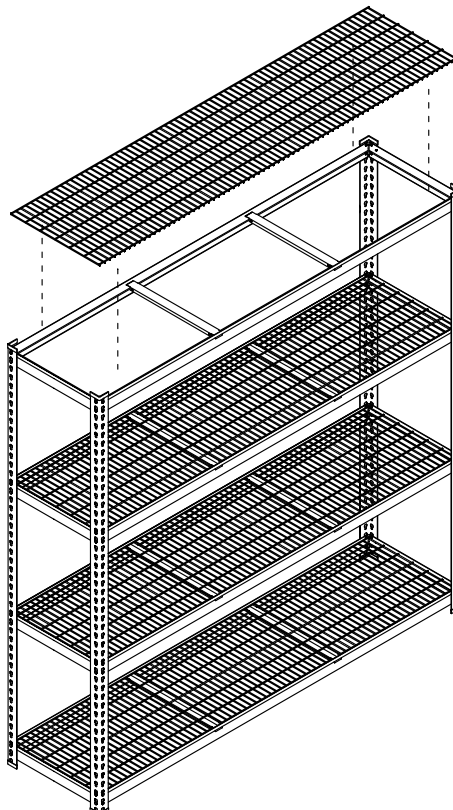
Step 1 - Start by joining a long beam and a short beam to an upright. Be sure to have the flat edge of the beams facing up. Repeat for each upright and insert plastic end caps as shown.



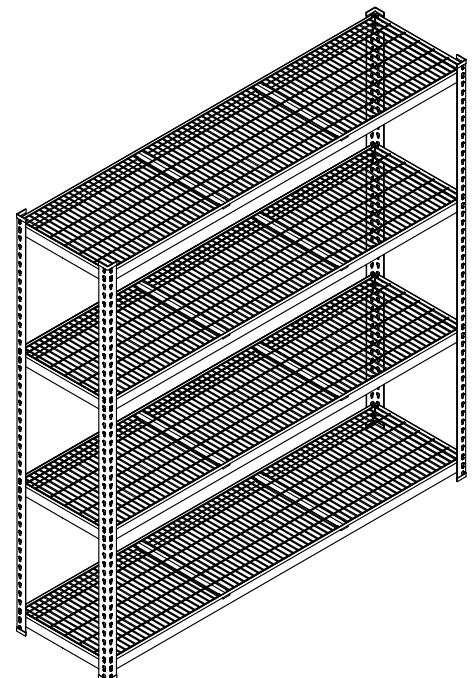
Step 2 - Complete the frame by adding shelf levels at desired height.



Step 3 - Insert the shelf braces at each level and the plastic end caps for the top of the uprights



Step 4 - Beginning at the bottom and working your way up, insert the wire shelves.



Step 5 - Complete assembly and move unit into place. For added stability shelving should be anchored to a wall.