

**SEA EAGLE.com**®



# PackFish 7

Instructions & Owner's Manual  
For video instructions visit, [SeaEagle.com/Instructions](http://SeaEagle.com/Instructions)

Sea Eagle Boats, Inc.  
19 N. Columbia Street, Suite 1  
Port Jefferson, NY 11777  
1-800-748-8066

March 2017

# Congratulations on purchasing a Sea Eagle!

With over 45 years of experience in designing, selling and using these quality inflatables, we're confident that you are going to love your Sea Eagle and we're ready to proudly stand behind them.

## **Manufacturer's Certifications**

**NMMA** (for USA only) certification means that the boat, sold in the United States, has been judged by the National Marine Manufacturer's Association to be in compliance with the U.S. Coast Guard Regulations and American Boat and Yacht Council (ABYC) standards and recommended practices.

## **Sea Eagle Warranty**

All Sea Eagle products come standard with a 3 year warranty against manufacturing defects. The warranty begins the date that your product is delivered. Sea Eagle must inspect equipment in order to determine if there is a defect. In the event that an item must be shipped back to us, Sea Eagle will only reimburse the standard return shipping charge through FedEx, UPS, or U.S.P.S. at published shipping rates. Fees charged by retail shipping outlets, like The UPS Store, will not be reimbursed and you are responsible for handling and packing charges.

Sea Eagle will refuse delivery on packages without a valid return authorization number and will not be responsible for shipping or handling charges. To obtain a return authorization number, please contact Sea Eagle directly, unless you purchased from an authorized dealer/reseller in which case contact them for more information.

If you receive a damaged item, please call the shipping carrier to report the issue. Do not return damaged merchandise until it has been inspected by the carrier. Sea Eagle will be notified by the carrier when they have completed their inspection and if necessary, Sea Eagle will arrange for the repair or replacement of damaged merchandise.

See complete warranty details at [SeaEagle.com/Warranty](http://SeaEagle.com/Warranty).

## **Decals, Stickers & Registration**

Always contact your state boating authorities for information on boating registration and regulations. Most states require you to register your boat if you are using a motor. **(Please note, the Sea Eagle PackFish 7 is rated for use with a 1 hp motor by the NMMA. However, there is currently no provision for a motor mount.)**

Upon registration it may be required to provide the Manufacturer's Statement of Origin. Purchases made through an authorized dealer or reseller may require for you to contact them directly in order to obtain this. You may be charged your own state sales tax if you were not charged sales tax at the time of purchase.

Registered boats generally require the registration number to be applied to the boat. We do not recommend the use of decals or stickers as they tend to crack and peel over time with the repeated inflation and deflation of your Sea Eagle. Instead we suggest applying these numbers to a small piece of hard plastic or marine plywood and hanging it from your boat like a license plate if permitted by your state.

## **Contact Us**

Unlike many other companies today we pride ourselves on answering the phone and helping you with any concerns, questions or special ordering needs that you may have! Feel free to give us a call at **1-800-748-8066** and we will be happy to talk with you! Our business hours are Monday to Friday from 9AM to 5PM, EST.

**Sea Eagle Boats Inc.**  
19 N. Columbia Street, Suite 1  
Port Jefferson, NY 11777  
1-800-748-8066  
*staff@seaeagle.com*

## **Safety**

In a manual of this type, it is impossible to give adequate space to the topic of water safety. For further information on boating safety, visit [USCGBoating.org](http://USCGBoating.org) or enroll in a water safety course given by a local provider.

It is your responsibility to be aware of and comply with all relevant safety regulations. For all water recreation or sport, you should have reasonable swimming abilities. It is strongly advised that you should never go boating alone.

## **General Boating Safety Tips**

- Always wear a USCG approved PFD (life vest) at all times while on the water.
- Be aware of your local boating rules and regulations and abide by them accordingly.
- Check inflation levels each time before you go out and inflate your boat for a full 24 hours before undertaking long trips.
- DO NOT allow children to use your Sea Eagle unsupervised.
- DO NOT consume alcohol while boating or operating a boat while under the influence of alcohol or drugs.
- DO NOT drag your Sea Eagle over rocks or gravel if it can be avoided.
- DO NOT exceed the certified maximum capacities of this boat under any circumstance.
- DO NOT go boating alone.
- DO NOT use compressors, CO<sub>2</sub> or compressed air for inflation, only use Sea Eagle recommended pumps.
- DO NOT use your Sea Eagle Boat as a personal flotation device as they are not rated for that use.
- DO NOT sleep inside of your Sea Eagle while on the water.
- Bring a cell phone or other emergency contact device in a waterproof bag.
- Always tell someone of your boating plans.

## **Safety Equipment & Important Safety Items**

The type of water conditions you are on should determine the type of safety equipment that you should have on board. For all types of boating we strongly recommend that every passenger wear a USCG approved PFD (personal flotation device) like a life vest. In most places this is a requirement by law, but it is also an exercise of good judgment to have a PFD for all passengers

**Drinking Water & Snacks:** Boating is a physical activity that can work up both a thirst and a sweat. On a hot or warm day it is smart to have drinking water readily available to prevent dehydration. Bring an ample supply of water.

**Extra Clothes/Layers:** You never know when the weather can change and it's a good idea to come prepared with extra clothing. A dry (waterproof) bag will keep clothes dry in case of emergency.

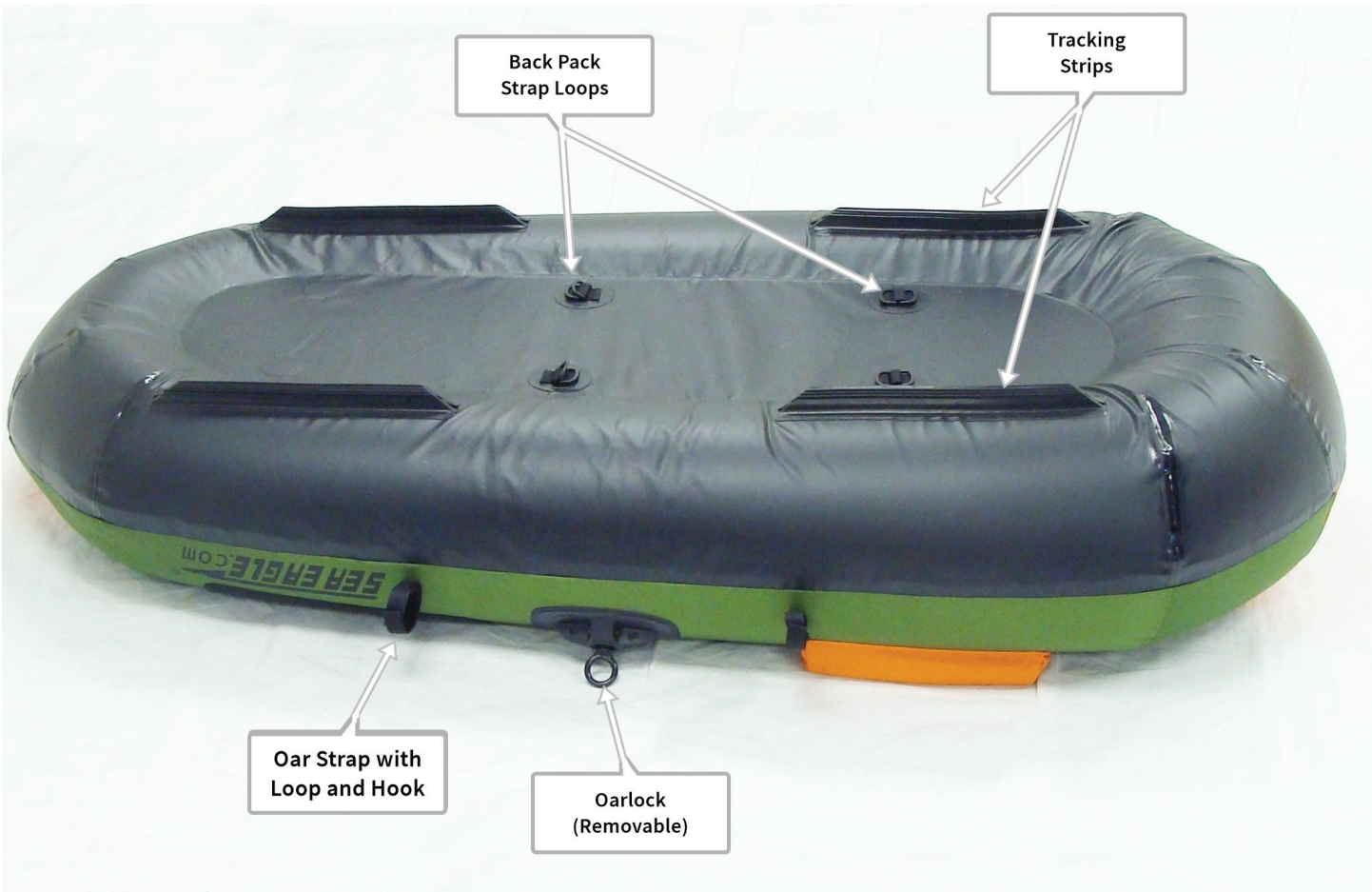
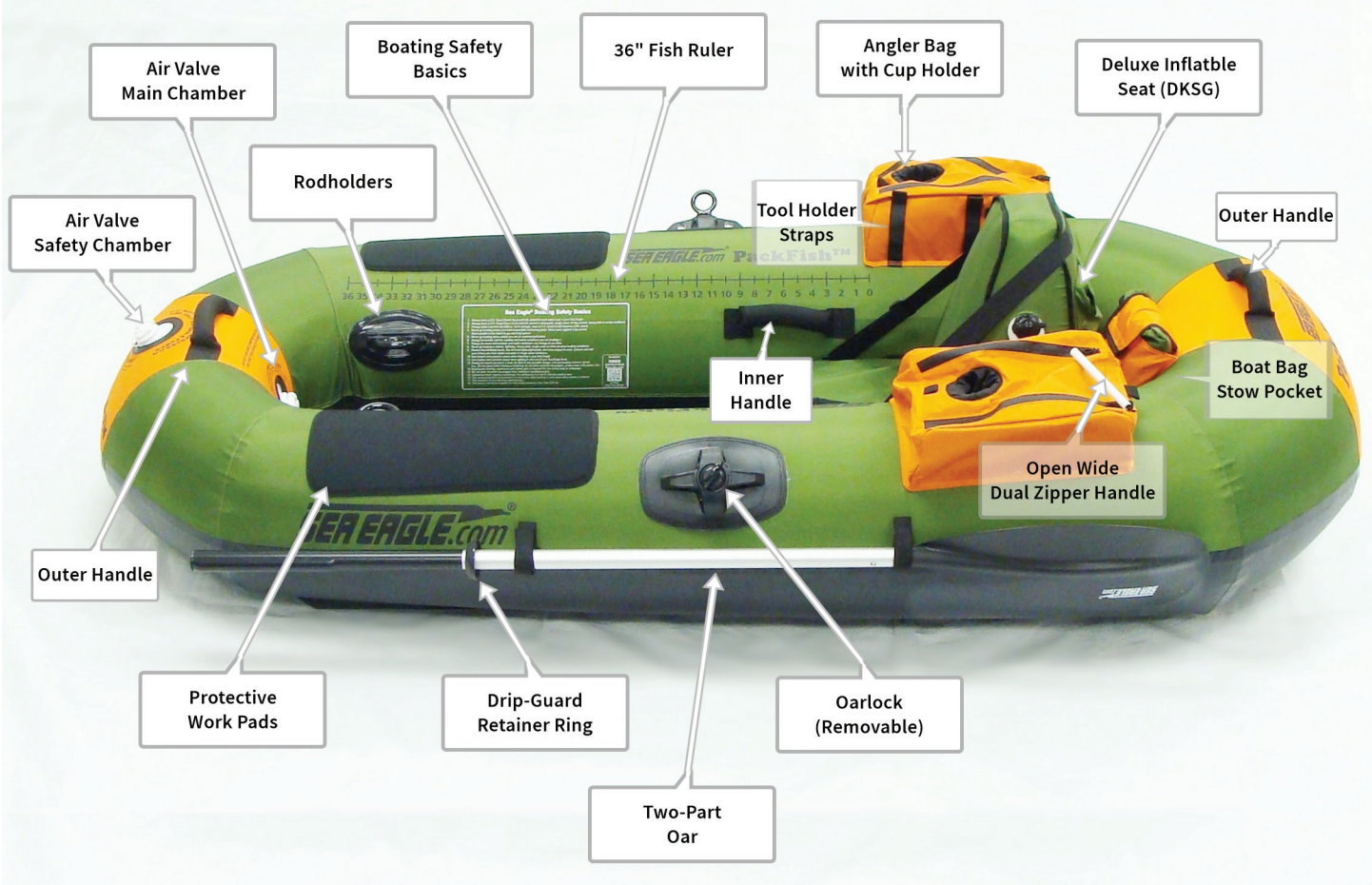
**First Aid-Kit:** The contents of the kit may vary depending upon your preferences, but make sure to carry a kit that reflects the possible dangers for the conditions you are in.

**Manual Pump/Repair Kit:** Although our boats are both durable and rugged, it may be possible that you need to make a repair while on the water so you'll need the repair kit and a manual pump to re-inflate the boat. If this is your first repair, you may also want to bring this instruction manual with you.

**Sun/Rain Protection:** A hat can protect both your face and head from the rain or sun. Use and carry sunscreen with you as both the sun and the sun's reflection from the water can do serious damage to your skin. If you are out for prolonged periods of time you may need to reapply sunscreen as needed.

**Whistle:** Having a whistle readily available is a great way to attract the attention of others if assistance is needed.

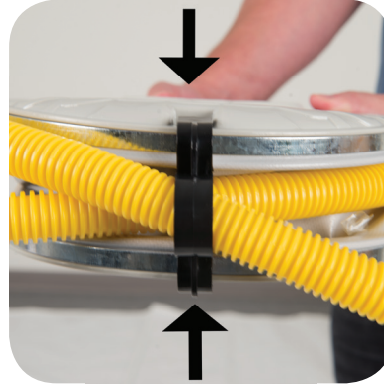
**Float Plan:** Similar to a pilot's Flight Plan, consider having a Float Plan ([www.floatplancentral.org](http://www.floatplancentral.org)). Always tell someone where you are going to be boating and what time you plan to return. Keep a cell phone in a waterproof container that will float if it falls in the water.



## SET UP | Pre-Inflation



Select a flat, hazard free area to unfold the boat. Locate the air valves and oarlock rings.



Assemble your A42 Bellows Foot Pump. Push down on the top & bottom of pump to release the black clip and unravel the hose.



Screw the oarlock rings into the bases.



Insert the hose into the "INFLATE" port on the foot pump.

**Note:** Use the "DEFLATE" port when you need to pack your boat down as compact as possible.



Move the valve bases to the openings in the cover.



Four adapters are included. Only the two pictured work with Sea Eagle Boats. Either of the two Air Valve Adapters work with the PackFish 7 and inflatable seats.



Stretch the valve retainer ring over the valve base.

Tip: Stretch or heat ring before sliding onto the base. Use hot water or a hairdryer.



Insert the proper adapter into the end of the hose and lock into place.



**Note:** Valve adapters can be left attached to the tether or removed.



Screw the valve into the base tightly and unscrew the cap.



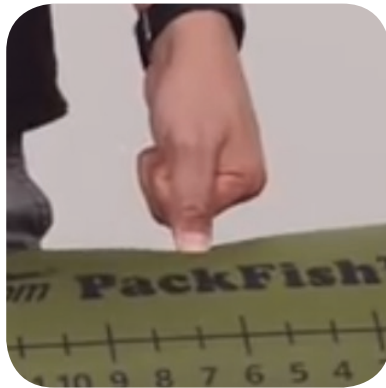
First, check that the pump is switched OFF before inserting the power adapter into your car's power outlet.



Open the cap of the air valve and twist on or insert the adapter. (Wide End adapter shown.)



Directly insert the pump (nozzle) into the valve fill port. Please note the valve adapters and black tube that come with the MB-80 are not necessary for Sea Eagle boats.



Pump until firm. **DO NOT** over inflate the tubes. Stop once you can press your thumb about 1/2" into the tubes. Inflate seat until comfortably firm.

Tighten valves firmly to avoid deflation.



### Battery Connector (OPTIONAL)

You can also power your MB-80 using the optional battery connector which will allow you to use the pump while connected directly to a 12V car or marine battery.

**Wide End Adapter:** fits inside the air valve.  
**Twist Cap Adapter:** twists onto the air valve like a bottle top.

**WARNING:** Always connect the red clip to the positive pole and the black clip to the negative pole. Cross connecting wires could damage both the pump and boat.



### MB-80 Electric Pump (OPTIONAL)

This electric pump works using the 12V power outlet in a car or with the optional Minn Kota Power Center.

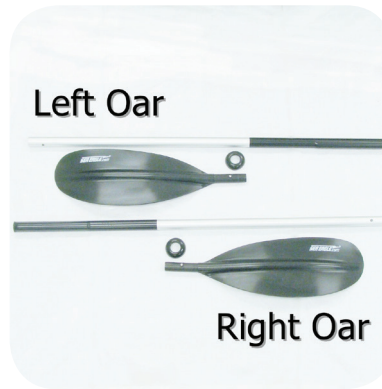


**Warning:** Air compressors that are designed for other uses, like tire inflation (usually around 32 PSI) can easily harm your Sea Eagle which works at a much lower pressure. For this reason we recommend only using Sea Eagle pumps.

## SET UP | Inflation



Insert hose into the first chamber valve and pump until firm. This is the safety chamber.



### Two-Part Oars

Each oar has a shaft, drip guard and blade. Left and right are assigned by looking at the boat from the back towards the front.



### Optional Floorboard

Insert floorboard after inflating the first chamber. Center in the boat but do not cover the rod holders. (Holes in the board are not used with PackFish 7.)



Push the drip guard onto the shaft all the way to the black grip. Insert shaft in oarlock ring.



Insert hose into the second chamber and inflate until firm. This is the main flotation chamber. Most of the wrinkles should be out of the cover.



Slide the blade onto the shaft and adjust until the button pops up through the hole.



### Deluxe Inflatable Green Seat

Attach valve to bases. Inflate the seat so that it is comfortably firm. Tighten valves very firmly to avoid deflation.



Repeat assembly for the other side. Orient the curve of the blades to cup the water on the power stroke.





For quick access, with the oar in the oarlock, secure the shaft with the hook & loop strap.



Unscrew oarlocks and secure them in tool strap.



Due to the bulk and weight of the boat and accessories, use caution not to lose balance or overexert yourself.

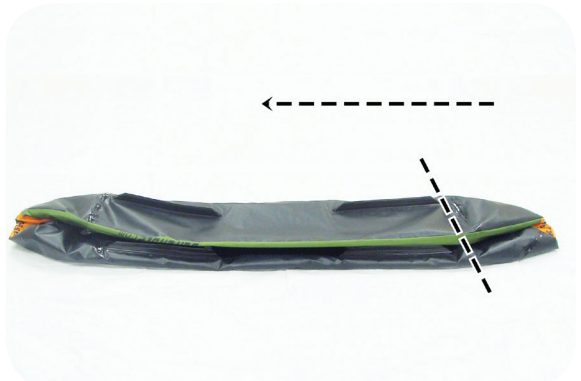


Fold one side over the floor. The bottom should be exposed 2-3 inches past the tracking strips.

## BREAK DOWN | Deflation, Folding & Storage



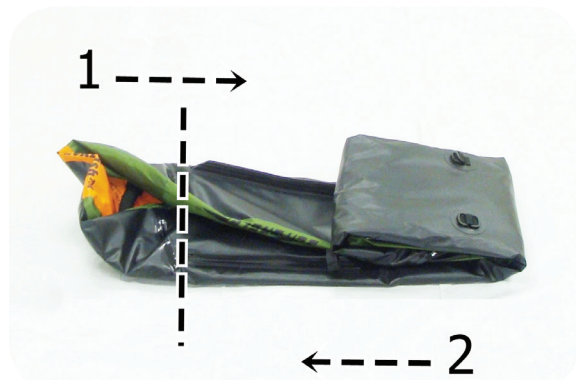
Unscrew the valves from the bases. Most of the air will release immediately. Remaining air will push out as the boat is folded.



Fold the other side over the first side until the tracking strips comes over 2-3 inches. Then begin folding from back to front using the tracking strips as guides.



Remove boat bag from its stow pouch behind the seat.



For final folds, fold the front up and over the tracking strips, then fold the back on top.



Slide the boat and accessories into the bag.



Boat and all accessories fit in the included storage bag.

## STORAGE

PVC can become brittle in cold temperatures. To avoid damage, store in an area where sudden impacts are not possible.

If leaving the Sea Eagle outside during boating seasons, keep it raised off the ground and covered so that it is not exposed to berries, leaves, rain, sunlight and other elements.

Sea Eagles that are left uncovered will have to be bailed or pumped out from time to time. Accumulated rainwater can get quite heavy.

Dry the boat and accessories before storing to eliminate moisture that could cause mildew.

Choose a cool, dry spot when storing. Enclosed areas like a basement, closet or garage should be ventilated or humidity controlled.

Avoid excessive heat when storing. Do not store in an attic or metal shed.

Rodent proof the storage areas. Mice can do a lot of damage. Use a container with a tight lid, such as a clean garbage can or large plastic bin.

## TROUBLE SHOOTING | Air Leak

If your boat is losing air it doesn't necessarily mean that it has a hole. For instance a boat that is inflated late in the day with 90° air may cool 20° overnight.

The cooler air will exert less pressure on the hull and the boat will appear softer the next morning. When there has been no variation in temperature and your boat is losing air then it is time to start looking for the leak.

### What causes an inflatable to leak air?

**Valve leaks:** Usually caused by valve not screwed in tight enough, retainer ring pinched between base and valve or a dent in the base O-ring.

**Punctures** can be caused by submerged metal debris, oyster shells, barnacles, fish spines, dragging the boat over pavement or concrete, exposed nails in docks, damage done in storage, and other causes. Boats are usually not damaged by rocks, sticks or fish hooks.

**Seam leaks** are the least likely cause of a leak. If a seam leak is found, contact Sea Eagle customer service. Take photos of the problem if possible.

Most repairs are simple and can be done with the repair kit and a hair dryer (if available).

### Visual Inspection

First, listen for air escaping, you may be able to identify the leak immediately.

Visually inspect the cover for rips, tears or punctures. Check top and bottom. Mark the inner bladder with pen or pencil when the leak is found.

### Listen

If you have a rough idea of where your leak is but can't see it, you may want to try listening for it as you may be able to hear the air escaping and pinpoint the leak.

## TROUBLE SHOOTING | Retainer Ring



### Retainer Ring

The valve base has a groove for the retainer ring. Check that the retainer ring is in its groove.



A common error is to pinch the retainer ring between the valve body and base. Trapping the ring breaks the air tight seal. If excess material covers the groove, the ring will go over if stretched slightly.



### Denting

Check the O-Ring base for dents. Denting can occur when the valve body lies across the O-Ring during storage. Heat the O-Ring with a hairdryer for about a minute or so until the dent eases itself out.



### Debris & Diaphragm

Check the black diaphragm at the bottom of the inner valve for sand or other debris. Also check the threads on the base, body and cap for sand or debris that might break the seal.



To inspect the air bladder, deflate the boat and pull the bladder out the zipper opening.



### Soapy Water Test

Inflate the bladder to full pressure. Mix a couple of tablespoons of dish washing liquid in a bucket of water.

Spread the soapy water on the leaking chamber with a large sponge or hand towel. The leak may produce bubbles or make whistling or sputtering noises. Often, spray bottles don't work.

## TROUBLE SHOOTING | Tracking Strips



There are four tracking strips on the bottom of the boat which help to maintain course. The tracking strips are very flexible but if they become deformed, heat with a hairdryer until they return to their original shape (1-3 minutes).

Trouble shooting tips continued on next page.

## TROUBLE SHOOTING | Repairs

Even though your Sea Eagle is very rugged and tough, you may still experience the occasional puncture. Fortunately most repairs are fairly easy and only take a few minutes.

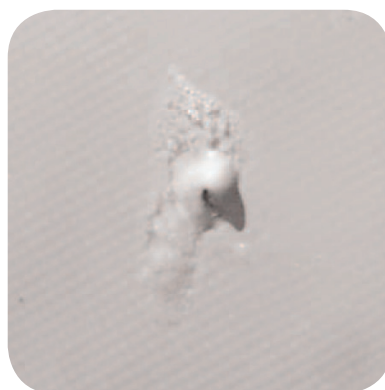
For an extensive repair please contact us directly for assistance or a quote to have it sent back and repaired at our facility. Repair fees start at \$75.00 and do not include return shipping charges.

For a demonstration of good patching technique, please view our How to Repair video on the instruction page of our web site. There is a link at the bottom of every page at SeaEagle.com or type "instructions" into the search box.



### Repair Kit

All Sea Eagles come with a repair kit which includes patching material and PVC glue.



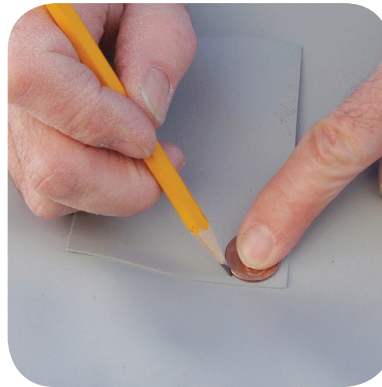
### Pinholes

Deflate your boat and thoroughly clean and dry the area that be repaired. For small punctures, less than 1/8", apply a small drop of glue and allow 24 hours to dry.

Leaks larger than a pinhole should be patched. The patch should be as small as reasonably possible.



Thoroughly clean and dry the area surrounding the leak. Circle the leak to make locating it easier throughout the repair process.



Use a pencil or ballpoint pen to trace the outline of the patch. Angle the pen inward a bit so that the ink will be covered by the patch later.



Apply glue to the patch and the area outlined on the boat.



Place the patch on the damaged area and press down firmly. Let the glue sit for 5-15 minutes until it appears tacky. If glue does not hold, heat patch with a hair dryer for about a minute and re-seat the patch.



Use a hair dryer on the high setting to activate the adhesive and then press firmly on the patch until it cools.

**Note:** *NEVER* use a hair dryer on an inflated chamber.



**Personal Flotation Devices (OPTIONAL)**  
U.S.C.G. approved. Life jackets, paddling vest, PFD Belts available in various sizes.

### Patching Tips:

- For immediate use, allow 30 minutes to cure and inflate  $\frac{3}{4}$  full
- Chamber must be deflated or air will make a path through the glue
- Do not apply the patch while glue is wet
- For larger repairs, overlap the damaged area by about  $\frac{1}{2}$ " on each side
- Trim the patch material to size, the larger the patch the harder it is to seal
- Covering a leaking patch with a larger patch does not work. Remove old patch with hairdryer.
- Covering a seam with a patch will not work
- Internal sealants and spray-on waterproofing are not recommended
- Alcohol, acetone (nail polish remover), toluene and MEK solvents can be used
- Sanding is not recommended
- Clamps and weights are not needed



**Backpack Transport Straps (OPTIONAL)**  
The PackFish can be carried backpack-style while inflated. Attach the straps to the D-rings on the bottom of the boat.



**Waterproof Blanket**  
Super plush Polartec® Classic 200 Fleece inside keeps you warm on chilly days. Completely waterproof nylon shell keeps you dry and shelters you from the wind. Packs down to just 18" x 6" x 3" and weighs only 18 oz for easy portage.

### ACCESSORIES | Optional



We offer a wide variety of accessories to use with your Sea Eagle.



**Squid Anchor**  
The Squid Anchor gets its heft from up to 14 lbs. of river sand, stones, rocks or gravel provided by nature. Triple flukes add sticking power. When you're done, just dump, rinse, stow and go! Weighs under 8oz. when empty. Comes with 25' of rope. Stored anchor dimensions 12"x2.5"x2.5".