

# WHY DO I NEED A DOCK DE-ICER?

Protect Your Docks and Boats From Expensive Damages and Time-Consuming Repairs.

## DAMAGE TO BOATS

When water freezes it expands against your boat. The water will still move underneath the ice and your hull will grind on the ice causing major damages and leaks.



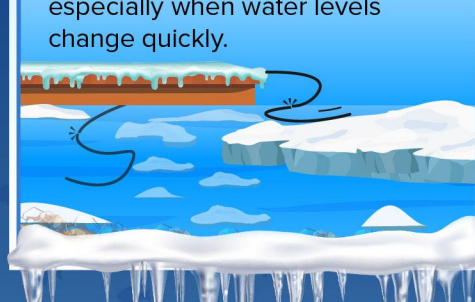
## ICE JACKING

As ice expands it can pull dock pilings out of their footings. This can cause damage to your entire dock and the repairs are expensive. When water changes levels under the ice it can magnify the problem.



## CABLES BREAKING

If you are on a body of water that changes levels, either naturally or by man, you probably have cables connecting or anchoring your dock. These cables can snap in the ice, especially when water levels change quickly.



## WINTER KILL

When ice gets thick and sunlight can't get through the oxygen levels will quickly decrease. This causes fish and plant life to die and your water conditions to deteriorate.



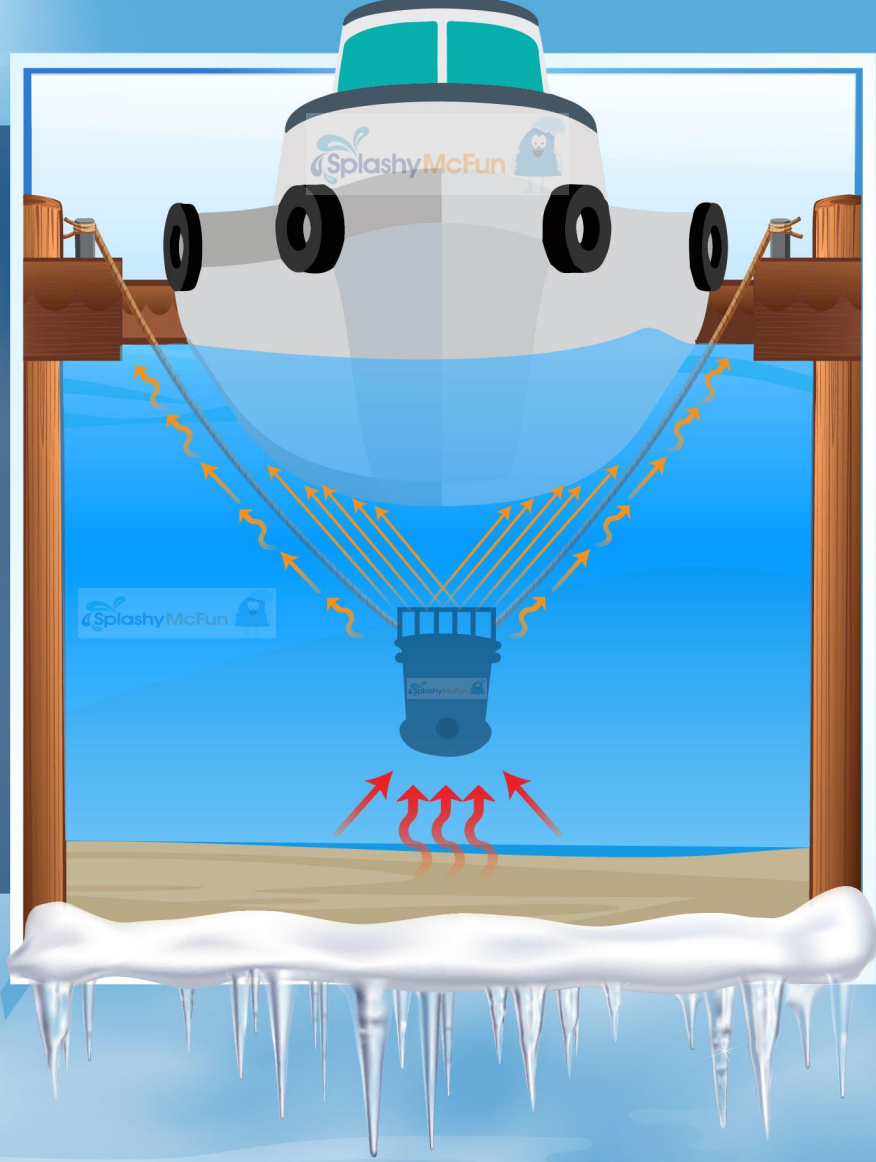
## FLOATING ICE

Floating ice can be aggressively forced into your dock or boat by the wind or current. This can also cause major damages.



## HOW DOES A DOCK DE-ICER OR ICE EATER PROTECT AGAINST ICE DAMAGE?

Setting your de-icer up vertically will give you a full circle shaped opening. You may also use other mount styles to set it up more horizontally to create a longer oval or elliptical shape. In shallower waters a horizontal flow may be your best or only option.



## HOW DO I MOUNT A DOCK DE-ICER?

### MOORING ROPE SUSPENSION

Vertical suspension creates a circular opening and is great in deeper waters.



### DOCK MOUNT

Conveniently attaches to your dock pole attachment at an angle. Some models offer an oscillator that will fan the de-icer 180 degrees.



### SHALLOW WATER

The stand is great for shallow water situations. This style is often used by duck hunters to open up ponds.



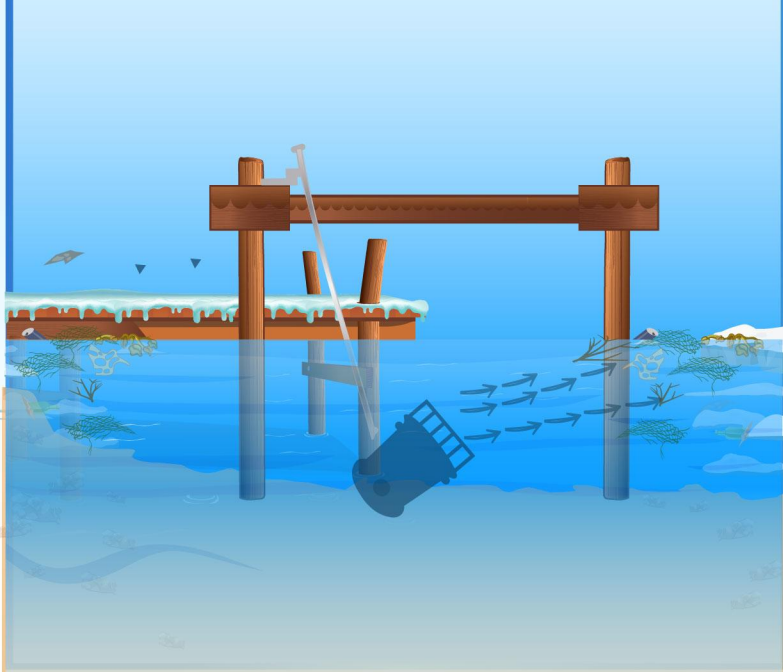
### FLOATING MOUNT

This model is ideal for changing water levels. It is also great in shallow waters. Horizontal mounting creates a longer oval shape.

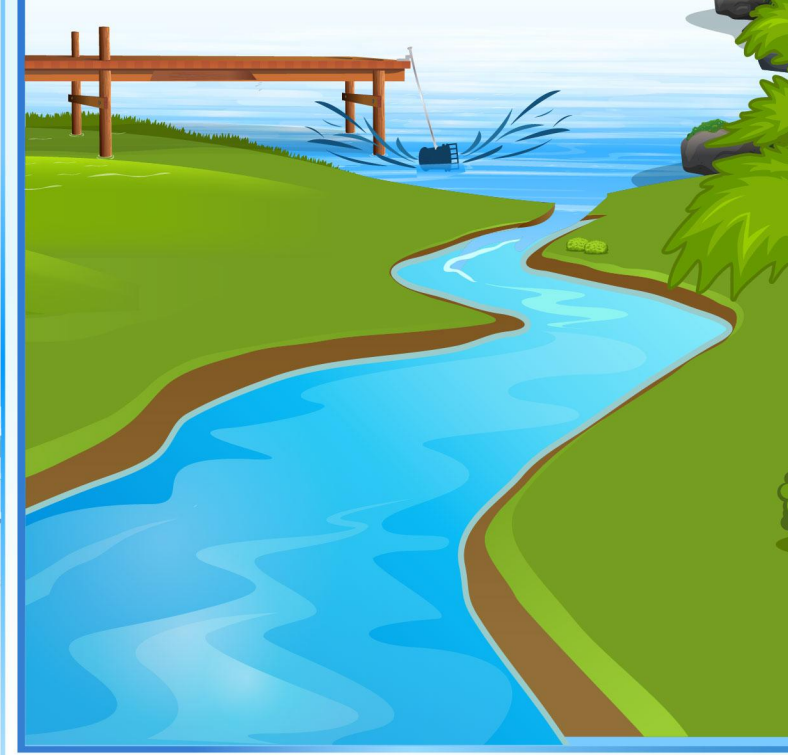


## SUMMERTIME DE-ICER USES

### MUCK & ALGAE REMOVAL



### WATER FLOW



## CONTACT INFORMATION

We want to help you find the best de-icer to protect you against ice damage.

**IF YOU HAVE ANY QUESTIONS, PLEASE CONTACT US AT:**



service@splashymcfun.com



(888)-897-7527