



- 🇬🇧 1. Bixpy Power Pack User manual and safety guide

Shop Now at www.SplashyMcFun.com



BA-HHB-1001/2



BA-OBB-1003

Blue LED models - Shipped after June 2019

BEFORE YOU BEGIN

Thank you for purchasing a Bixpy Power Pack. You are now part of a family of adventure seekers who own one of the most advanced, versatile and portable personal water propulsion systems in the world.

Bixpy products combine the latest in motor and battery technology along with finely tuned mechanical engineering to give you gadgets that redefine the way you interact with the elements. As such, they take a bit of learning and require some extra care. There are also hidden features and trouble-shooting information that are critical to the operation and well being of your Bixpy device.

So, before anything else, and definitely before you hit the water, PLEASE read through this User Manual and learn how to use and take care of your Bixpy Power Pack. Misuse and lack of care can be dangerous to you and those around you, void your warranty and render your device useless.



SAFETY, RESPONSIBILITY AND RELEASE

Using a motor/thruster on any watercraft or for diving or swimming can be dangerous and involves certain risks which often cannot be predicted or avoided. Those risks include, but are not limited to, personal injury or death, property damage, which may result from, loss of control, collisions with other users or watercraft, swimmers, and natural and man-made objects and/or animals/plants. By choosing to use a Bixpy product, you assume these risks and thereby need to know and practice water safety rules, responsible motoring, and proper use and maintenance of your Bixpy product(s) to reduce these risks. Since it is impossible to anticipate every situation or condition which can occur while under motor power in water, Bixpy can make no representation or warranty about the use and safety of Bixpy products under all conditions.

By purchasing and/or using Bixpy Products, you acknowledge, agree and understand the danger(s) involved in using Bixpy products and accessories. You, on behalf of yourself and your heirs, executors, administrators, successors and assignees: (1) Fully assume the risks involved in using Bixpy products and agree to use your best judgment in undertaking your activities to reduce such risks. (2) Agree to strictly and fully follow all safety instructions in this document and/or provided on the Bixpy Website or related communications. (3) Fully and voluntarily waive, relinquish, covenant not to sue, release and agree to indemnify and hold harmless Bixpy, its members, employees, officers, managers, agents, resellers and representatives from any claim or loss for personal injury, property damage and/or death resulting from the use of Bixpy products and/or accessories.

You further: (1) acknowledge and agree that this waiver and assumption of risk is intended to be as broad and inclusive as is permitted by applicable law and that if any portion thereof is held invalid, the balance shall nonetheless continue in full force and effect; (2) acknowledge and agree this assumption of risk and waiver provides for the release of legal rights; and (3) expressly waive whatever benefits may be available under Section 1542 of the California Civil Code, as follows: A general release does not extend to claims which the creditor does not know or suspect to exist in his or her favor at the time of executing the release, which if known by him or her must have materially affected his or her settlement with the debtor.

Please note that your insurance policies may not provide coverage for incidents resulting from the use of Bixpy products. Please contact your insurance company to determine your coverage prior to using Bixpy products.

IF YOU DO NOT AGREE FULLY TO ALL OF THESE PROVISIONS, YOU SHOULD NOT USE BIXPY PRODUCTS.



WARNINGS & PRECAUTIONS

Please read and keep these warnings and precautions handy for future reference. Failure to safely operate and care for your Bixpy products can result in loss of warranty, property damage, serious injury, or death.

NEVER use Bixpy Jets to go further than you can swim, paddle or pedal back on your own power. Like any other electronic device, there is a chance that at any moment your device may seize to function as expected. Always ensure that its seizure will not put you in danger.

In case of a malfunction whereby the thruster will not stop operating, remove thruster from water as soon as possible and unplug from Power Pack. Remember, in an emergency, it is better to abandon your device than to risk your well being.

You must take the following precautions when using a Bixpy Products:

- ALWAYS use the charger shipped with your Bixpy Power Pack
- Never manipulate the Power Packs by plugging them into each other in series or parallel
- The Bixpy Power Packs are ONLY made to run Bixpy Thrusters
- Do not open the Power Packs, you may cause a fire or an explosion
- Never use under the influence of drugs or alcohol
- Not to be used by children under 8 years old
- Must be used by children only under adult supervision
- Misuse can lead to serious injury or death
- Always rinse in clean fresh water after use
- Never expose bare connectors to water - connectors are only waterproof when mated
- Always use provided connector caps when connectors are not mated
- Operate and store above 0°C (32°F) and below 45°C (113°F)
- Do not use harsh chemicals to clean any Bixpy products
- NEVER spray Bixpy Products with anything - including paints and/or water sealants
- Do not store a drained Power Pack. Keep your pack charged regularly
- If you suspect your Power Pack has water inside, dispose of it properly as soon as possible



MATING YOUR OUTBOARD POWER PACK - BA-OBB-1003

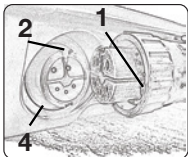
The first few times you connect your device, the connectors are more difficult to mate until they are “broken-in”. DO NOT use force, pliers or other tools to mate your connectors. Be patient and use a towel for better grip if necessary. Over-tightening the connectors will NOT provide a better water seal and broken connectors are not covered under warranty.

In general, it is a good idea to fill your connectors with dielectric grease before mating, especially if you use your equipment in or near salt water.

The connector caps on your Power Pack housing and adapter wires are there to protect your connectors during storage and transportation. Remove the caps that will be submerged or they will come off and be lost with water flow. The connector cap on your charging and auxiliary ports must be installed tightly at all times when near water. *NOTE: Never cap and store a wet connector!*

MATING YOUR MAIN POWER OUTPUT

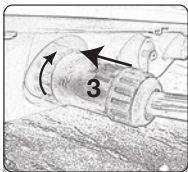
i.



Align connector pins (1) with the Power Pack's connector notches (2).

Hint: when new, your connector pins are marked on the outside for easier identification.

ii.



- Push your adapter connector (3) into the Power Pack connector (4)
- Rotate your connector nut 175° until you feel the nut lock into place.

Hint: watch this instructional video: www.bixpy.com/connect

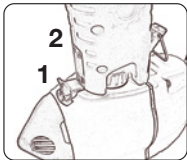
WARNING:
YOUR BIXPY CONNECTORS ARE ONLY WATERPROOF WHEN MATED PROPERLY and ONLY SPLASH PROOF WHEN EXPOSED!!!



MATING YOUR HANDHELD POWER PACK - BA-HHB-1001/1002

Your Bixpy Thruster and handheld Power Pack use a simple latching mechanism to attach the Power Pack to your Thruster and give you the World's smallest Diver Propulsion Vehicle (DPV). As with all other Bixpy Connectors, be patient and gentle and DO NOT use excessive force to mate your connectors. Use dielectric grease for dives below 10 feet (3 meters).

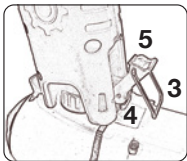
i.



Slide front nose latch (1) forward and insert metal toe (2) under the nose latch (1).

Hint: Before this point, your connector should be fully and securely mated. A poor mating could result in damage to your thruster and/or thruster.

ii.

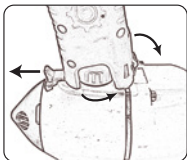


Push the rear spring (3) on your adapter or HandHeld Power Pack under the thruster's clasp (4).

Push up the blue latch (5) to securely lock your adapter to your thruster.

Hint: your blue latch (5) may be tough to open with your finger. If necessary, use a flat tip screwdriver to assist. BE GENTLE!

iii.



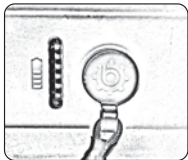
When opening your adapter, follow steps i. through iii. in reverse, for your Power Pack and i & ii on page 4, in reverse, for your connectors.



SYNCING YOUR REMOTE TO YOUR POWER PACK

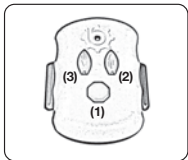
Bixpy Remotes can be programmed to work with one Power Pack or multiple Power Packs. Follow the procedure below to program your remote to work with your Power Pack.

i.



Place your kill switch on your Power Pack and make sure you have power in your Power Pack (at least one LED light should be on).

ii.



Click the buttons on your remote in the following order in moderate speed

- Click the Stop Button (1) 3 times
- Forward Button (2) 1 time
- Reverse Button (3) 1 time
- Stop button (1) 1 time



For video instructions, visit: www.bixpy.com/myremote

To confirm pairing, click your stop button once and you should hear a double beep.

Hint: You do not need a Thruster attached to your Power Pack to sync your remote.



YOUR OUTBOARD POWER PACK

Your Outboard Power Pack is activated using the provided magnetic kill switch. Place the kill switch on the front indentation of your Power Pack, near the LED indicators. Once your Power Pack detects the magnet, it will activate your system within about 2 seconds. If your battery has any charge, it will indicate its approximate charge level by lighting up the 6 LED lights. A full battery will show all 6 LEDs lit. Each LED represents approximately 17% of the battery's capacity.

Once your Power Pack is activated and connected to your Thruster, you'll be able to run your Thruster in 12 forward speeds and 3 reverse speeds using your Bixpy Remote. Use your right forward button to move through the 12 forward speeds and the left button to move down through the forward speeds and into the reverse speeds. Use the stop button for a complete stop regardless of speed.

YOUR KILL SWITCH

The kill switch is there to protect you in case of an accident where you and your vessel are separated. Always ensure that the kill switch is attached to you in some way. That way, if you and your vessel part ways, the motor stops. Not wearing your Kill Switch can lead to serious injury or death to you and those around you.

START WITHOUT YOUR REMOTE (Outboard Power Pack only).

If you lose, misplace or have a dead battery on your remote control, you can still start your Thruster by tapping your kill switch on the Power Pack four times. Timing your taps to activate the Power Pack is important. Watch this video to learn how to do this: www.bixpy.com/4taps. This feature starts and runs your Thruster at speed 5 forward only. Stop by removing the Kill Switch.

AUXILIARY POWER

The Bixpy Outboard Power Pack has one output for both 12V and 5V USB power. Use only Bixpy connectors to power your phones, tablets and small 12V devices.



OPERATING YOUR BIXPY SWIM POWER PACK

The Bixpy Swim Jet uses submersible handheld battery packs to turn your Bixpy Jet into the ultimate diver propulsion vehicle (DPV). Here are the main features of your Bixpy Swim Jet:

1. Your Bixpy Swim Jet is controlled using a magnetic finger trigger. Hold the switch down for about 3 seconds to activate your Swim Jet. Once activated, you will hear two beeps and the battery status lights turn on to indicate your charge level.

- Pull on the trigger again for speed 1
- Another quick pull of the trigger for speed 2
- A final pull of the trigger for top speed

2. Remember, if you ever want the motor to stop, let the trigger go and it will immediately stop the motor. Speed 1 is NOT a swim speed and is reserved as a test speed and for removing debris for underwater explorers.

3. Your Swim Jet batteries are equipped with a 6-LED status indicator. These lights are only for reference purposes and have fairly poor accuracy by nature. So they should not represent a reliable, proportionate battery life indicator for your dives. **DO NOT RELY ON YOUR SWIM JET OR ITS BATTERY LIFE OR INDICATORS FOR YOUR DIVES.** You should NEVER use the jets to take you beyond distances or depths you can not comfortably and safely swim in case of failures.

4. Charging port: Make sure your charging port cap is closed and secured before exposing it to water. If you are diving below 10M (30 feet), you must fill the connector with dielectric grease for a full water seal. Dielectric grease can be purchased at: www.bixpy.com

5. The lanyard loop: You should use the lanyard loop to secure the jets to your wrist or your diving equipment. The loop is sturdy enough to be used as a tow loop.

6. Accessory mount: the Swim Jet battery features a standard 1/4" mount strategically placed to allow you to add a variety of accessories such as cameras and flashlights to your Bixpy Jet.

7. When mated to a Bixpy Handheld Battery, your Bixpy Jet can be used at a maximum depth of 30 meters (or 100 feet). Using the jet beyond this depth may cause water penetration and failure which will not be covered under the Bixpy Warranty. If you do dive below 10M (30 feet), you must fill ALL connectors with dielectric grease.



TAKING CARE OF YOUR BIXPY POWER PACKS

Your Bixpy Power Packs are shipped sealed and are not meant to be tampered with or opened. Here are some care and maintenance instructions for your battery packs.

- Your chargers have indicator lights that turn red when charging and turn green once the pack is fully charged. Near the end of the charging cycle, the red light may flash green for a period before turning permanently green. This is normal. NEVER leave your Power Packs plugged into the charger unsupervised or for extended periods. Lithium batteries DO NOT trickle charge.
- The Bixpy Remote is equipped with a watch battery CR2032, a readily available battery on-line or at many retail stores. This battery will need to be replaced when low. If the red LED light on your remote is flickering and looks weak or not lighting up, you will need to replace the battery. Please visit www.bixpy.com/help for instructions on how to replace your remote battery.
- If you suspect malfunction in your battery, please contact us immediately. DO NOT open the sealed packs, tamper with the batteries or try to resolve the situation. Lithium batteries can be dangerous to handle and can cause serious injury, death or fires if not handled properly.
- It is important that you secure your battery pack on-board when on a paddle board or kayak. If your battery falls overboard, there is a chance of damaging the cabling to the motor and/or battery housing in addition to being a danger to yourself or those around you. This sort of damage is not covered under warranty.
- Damaged, punctured or compromised lithium batteries can cause very serious fires. If you suspect damage to your battery, dispose of the battery in an appropriate manner immediately following your local laws for lithium battery disposal.
- NEVER expose the battery packs to water with connector caps open and terminals exposed.
- Make sure your Power Packs are not in the “ON” position when storing or transporting them.
- Keep your battery charged and do not let it over-drain. Over-drained batteries will shut down and will be rendered useless. Over-drained batteries are NOT covered under your warranty.



Every Bixpy thruster, Power Pack and accessory has been checked for defects multiple times and operated individually for quality control and defect-free operation. However, if you experience a problem or encounter a built-in safety feature that results in your thruster or Power Pack not operating as expected, the table below offers some simple troubleshooting hints. If you experience other issues, always feel free to reach out to us for support: www.bixpy.com/support.

ISSUE

CAUSE/ACTION

My Outboard Power Pack does not run my motor and produces flashing lights on the LEDs

Most issues leading to a motor malfunction result from connectors that are not mated well. A poorly mated connector allow water inside the connector and cause electrical shorts. Depending on which pins short, the battery will seize to operate the motor and one of the LED lights will flash. To reset the battery, remove your kill switch, check your connectors for proper mating, replace the kill switch and run your motor.

My Power Pack has shut off completely

Your Power Pack will shut off if there is a sudden overload on the battery. This can result from a wet and shorted connector or jammed propeller. This safety mechanism is to protect your Power Pack and Thruster. The only way to reset your Power Pack is to plug in your charger for a reset. Continuing to push the motor with a short like this can damage your Power Pack and/or Thruster permanently.

My thruster will not stop running

This is likely due to water intake into the thruster or your Power Packs or a blow to the Power Packs that has caused circuitry damage to the Power Pack. Stop using your product and contact Bixpy at: support@bixpy.com as soon as possible.

Useful links

Installation/download portal:

www.bixpy.com/guides

More questions answered:

www.bixpy.com/FAQs

Bixpy videos:

www.youtube.com/bixpy



LIMITED WARRANTY

Bixpy warrants its hardware products against defects in materials and workmanship for a period of one (1) year from the date of original purchase, provided the purchase was made from an authorized Bixpy Dealer or directly from Bixpy or the Bixpy website. This warranty is void if the equipment is opened, altered, misused, mishandled, maladjusted, suffers excessive wear or is serviced by any parties not authorized by Bixpy LLC. Bixpy Jets are made for recreational consumer use and are not warrantied for commercial or rental use. The warranty does not include transportation costs incurred because of the need for service. Bixpy reserves the right to make changes in design and improve upon its products without obligation to install these improvements in any of its products previously manufactured and sold. For warranty services or for a copy of Bixpy's Warranty Policy including a complete list of exclusions and limitations, contact Bixpy LLC at 1-866-249-7910.

BEFORE you send us anything back, please contact our customer service to discuss your issue and obtain an RMA (Return Merchandise Authorization). There are limitations on shipping lithium-ion batteries and we will not accept service returns without prior arrangements. Please contact us for details on how to deal with defective products at: ***support@bixpy.com***

We are not equipped to handle walk-in traffic at our headquarters in San Diego, so even if you are local, please do not bring your product to our offices unless you have made prior arrangements.



Bixpy®

Bixpy, Bixpy Jet and the Bixpy Logo are trademarks of Bixpy LLC. Copyright 2019®.

Registering your vessel

In certain municipalities, counties, states or countries, it is required that you register motorized kayaks, SUPs or canoes with your local licensing body. For example, in many US states, the state Department of Motor Vehicles (DMV) or the Coast Guard will require you to register your motorized kayak as a motorized vessel. Please be sure to take the necessary steps to comply with local laws and regulations that apply to your vessel once motorize. In the US, a good resource to find more information is www.takemefishing.org. For the purposes of registration or exemption from registering in certain places, please note that Bixpy Jets are electric motors that produce less than 10 horse powers.

Product variation

Some of the products photographed may have slight differences from the products in the package, both cosmetically and functionally.



Li-ion



PATENTED TECHNOLOGY



PRODUCT SPECIFICATIONS

OUTBOARD POWER PACK (BA-OBB-1003)

Length:	28 cm	11.3"
Width:	22 cm	8.7"
Height:	8 cm	3.2"
Weight:	3.08 kg	7.0 lb

Nominal Voltage	25.9V
Battery capacity	333Wh
Charge time	~ 5 hours

Device standby (in off position) 12 months (when fully charged)

Auxiliary output: 12V max 2.0A or 5V max 2.0A

Speeds: 12 speeds forward
3 speeds reverse

HANDHELD POWER PACKS (BA-HHB-1001/1002)

Length:	31 cm	12"
Width:	9 cm	3.5"
Height:	19 cm	7.5"
Weight (1001/1002):	1.2kg / 1.3kg	2.6 lb / 2.8lb

Nominal Voltage	22.2V
Battery capacity	98Wh / 147Wh
Charge time	~ 90 minutes / ~ 2 hours

Device standby (in off position) 3 months (when fully charged)

Speeds: 3 speeds forward

