



WebWarrior[®]

SURVEILLANCE TECHNOLOGIES

FORMAT CONVERTER

USER MANUAL

Thank you for purchasing our product. This manual applies to Format Converter, please read it carefully for the better use of this software.

This manual may contain several technically inaccurate points or printing errors, and the content is subject to change without notice. The updates will be added into the new version of this manual.

We will readily improve or update the products or procedures described in the manual.

Contents

Chapter 1 Introduction	3
1.1 Overview	3
1.2 Main Features	3
1.3 System Requirements.....	3
1.4 Conventions.....	3
Chapter 2 Getting Started.....	4
2.1 Running the Software.....	4
2.2 System Configuration	5
Chapter 3 Converting Local Files	6
3.1 Adding Video Files	6
3.2 Converting Files.....	9
Chapter 4 Converting Real-Time Stream	10
4.1 Connecting Real-Time Stream.....	10
4.2 Converting Real-Time Streams.....	11

Chapter 1 Introduction

1.1 Overview

The Format Converter is the software designed for converting the files or real-time streams with the parameter configurable, such as format, encoding type, resolution, bitrate, etc. With user-friendly GUI, the software provides an intuitive, convenient way for controlling the conversion, and supports converting multiple file types.

1.2 Main Features

- Support converting multiple file formats, such as *.hik, *.ps, *.ts, *.rtsp, *.mp4, *.3gpp, *.mov, *.avi, *.asf, and *.mkv.
- Support converting multiple streams of the various kinds of devices, such as DVR, encoder, network camera, network speed dome, etc.
- Support multiple file formats to convert to, including HIK, MPEG2-PS, MPEG2-TS, RTP, MP4, 3GPP, MOV, AVI, ASF, and MKV.
- Multiple languages GUI are provided.
- Get the information of file or stream.
- Play the video of the added files or stream.

1.3 System Requirements

Operating System: Microsoft Windows XP / Windows 7 / Windows 8 (32-bit or 64-bit)


RAM: 512MB or above

1.4 Conventions

In order to simplify the description, we define the “Format Converter” as “software” in the following chapters.

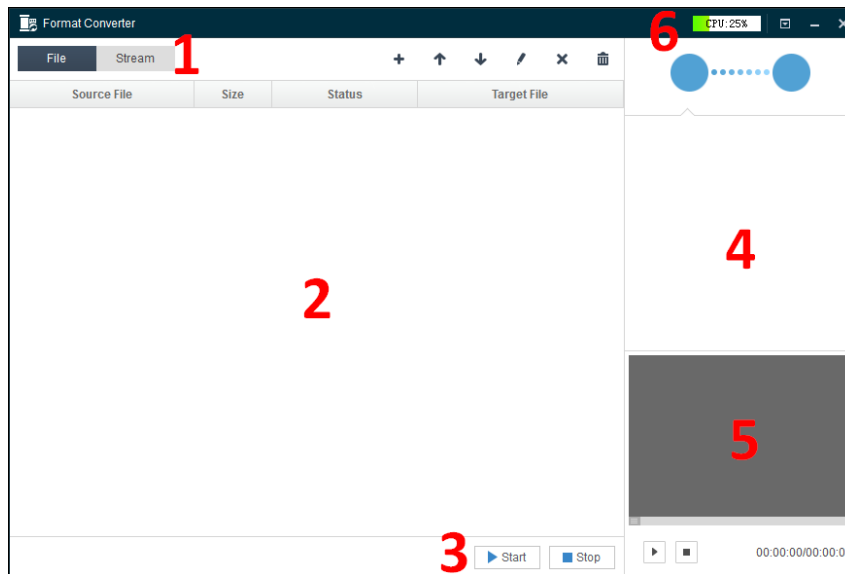
Chapter 2 Getting Started








2.1 Running the Software


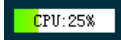



The software is installation-free and you can directly decompress the downloaded package and double-click the  in the folder to run the software.

Note: To remove the software, you can just delete the folder.


The main interface of the software is shown below.



No.	Icon / Button	Description
1	File	Convert the local media files.
	Stream	Convert the real-time stream.
		Add the file(s) or real-time stream for converting.
		Move the file up to adjust its position.
		Move the file down to adjust its position.
		Edit the conversion parameters for the file.
		Delete the selected file.
		Clear all the files in the list.
2	File List	Display the information of the added files or streams, and the converting status.
3	Start/Pause	Start / Pause converting the file(s). For real-time stream you can start converting the selected stream.
	Stop	Stop converting the selected file(s) or stream.
4		Show the parameters of the source file (or real-time stream) and target file.
5		The added file can be played.
		Start / Pause playing the selected file. For real-time stream,

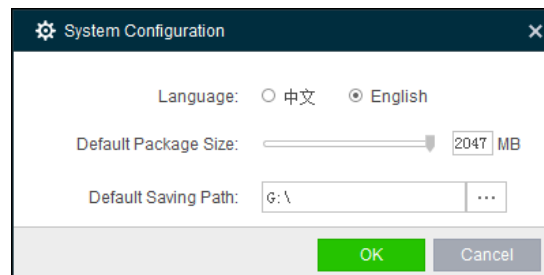
		you can start playing the stream.
		Stop playing the selected file or stream.
6		The CPU usage of your PC.
		Set system configuration, view the user manual and check the software information.
		Minimize the software.
		Exit the software.

2.2 System Configuration

Click  and select **System Configuration** to enter the System Configuration interface. You can select the language for the software as needed, set the default package size and saving path for the converted files.

Default Package Size: Set the packed size of the converted file for real-time stream conversion. The maximum size of the converted file will be the configured value. You can edit the specific package size when adding real-time streams.

Default Saving Path: Set the default saving path for the converted files. You can edit the specific saving path when adding files or real-time streams.



Chapter 3 Converting Local Files

You can add the video files that are stored on your PC to the software for converting.




3.1 Adding Video Files

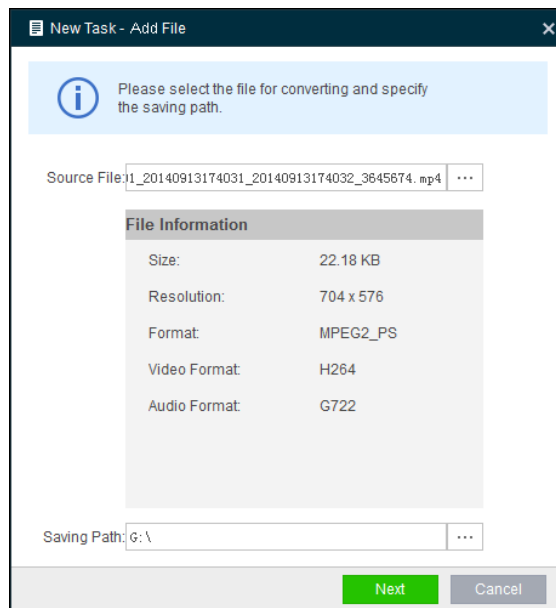
The software provides 2 ways for adding the local video files, including adding files directly and adding files of the selected folder.

Steps:

Add Single File

Steps

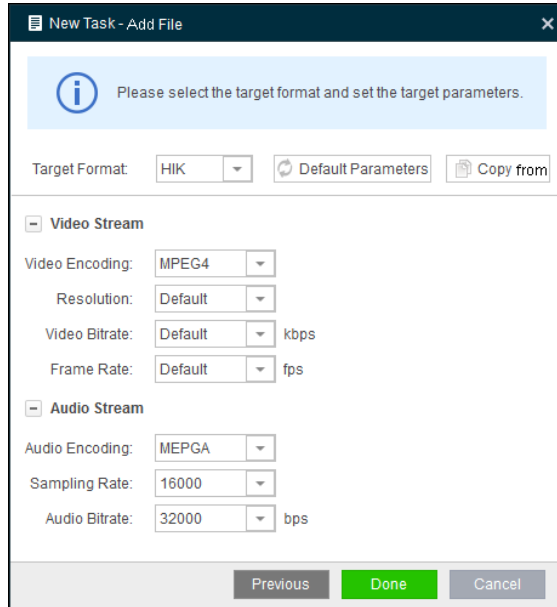
1. Select **File** tab, click  and select **Add File**. You can also right-click on the file list area, select **Add Task** and click **Add File**.
2. Click  and select the source file for converting. The information of the added file will be listed.
3. Click  and select the saving path for storing the target (converted) file.



4. Click **Next** and edit the conversion parameters for the file.
You can click **Default Parameters** to use the default settings for converting.
You can also click **Copy from** and select a added file or stream to copy the conversion settings from it.
 - **Target Format:** Select the format to convert to. Multiple formats are supported for converting to, you can select one according to actual needs.
 - **Video Encoding:** Select the encoding type for video stream of the file.
 - **Resolution:** Select the resolution for the file. You can also select Custom to set the resolution as desired.

- **Video Bitrate:** Select the bitrate for the video stream of the file.
- **Frame Rate:** Select the frame rate for the file. You can also select Custom to set the resolution as desired.
- **Audio Encoding:** Select the encoding type for audio stream of the file.
- **Sampling Rate:** Select the sampling rate for the file.
- **Audio Bitrate:** Select the bitrate for the audio stream of the file.

Note: Some parameters may be not supported by the source file.

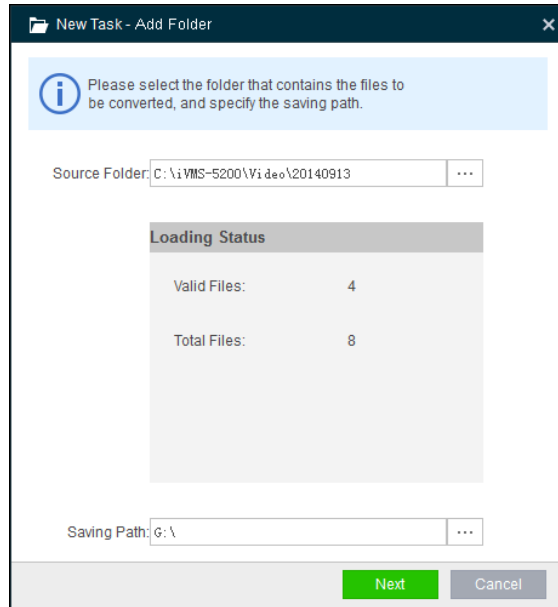


5. Click **Done** to save the settings and the file will be added to the list.

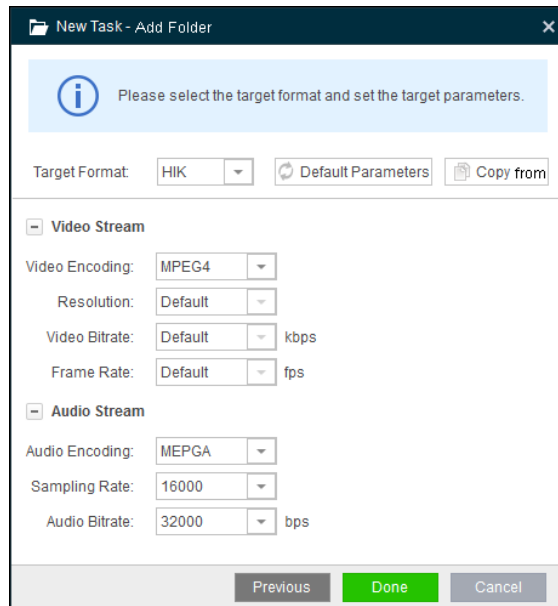
Adding Folders

Steps:

1. Select **File** tab, click **+** and select **Add Folder**. You can also right-click on the file list area, select **Add Task** and click **Add Folder**.
2. Click **...** and select a folder. The supported files under the folder will be added for converting. The information of the added folder will be listed. Valid files refer to the files that can be converted.
3. Click **...** and select the saving path for storing the target (converted) files.





4. Click **Next** and edit the conversion parameters for the files.
You can click **Default Parameters** to use the default settings for converting.
You can also click **Copy from** and select a added file or stream to copy the conversion settings from it.
 - **Target Format:** Select the format to convert to. Multiple formats are supported for converting to, you can select one according to actual needs.
 - **Video Encoding:** Select the encoding type for video stream of the file.
 - **Audio Encoding:** Select the encoding type for audio stream of the files.
 - **Sampling Rate:** Select the sampling rate for the files.
 - **Audio Bitrate:** Select the bitrate for the audio stream of the files.



5. Click **Done** to save the settings and the files will be added to the list.

3.2 Converting Files

After adding the video files to the file list, you can convert the source files to the target files. The successfully added files list on the file list panel. You can select a file and click  or  to adjust its position. The files will be converted in sequence.

View Information

On the right panel, you can click the left blue circle to check the information of the source file, and click right blue circle to check that of the target file.

Check the Video

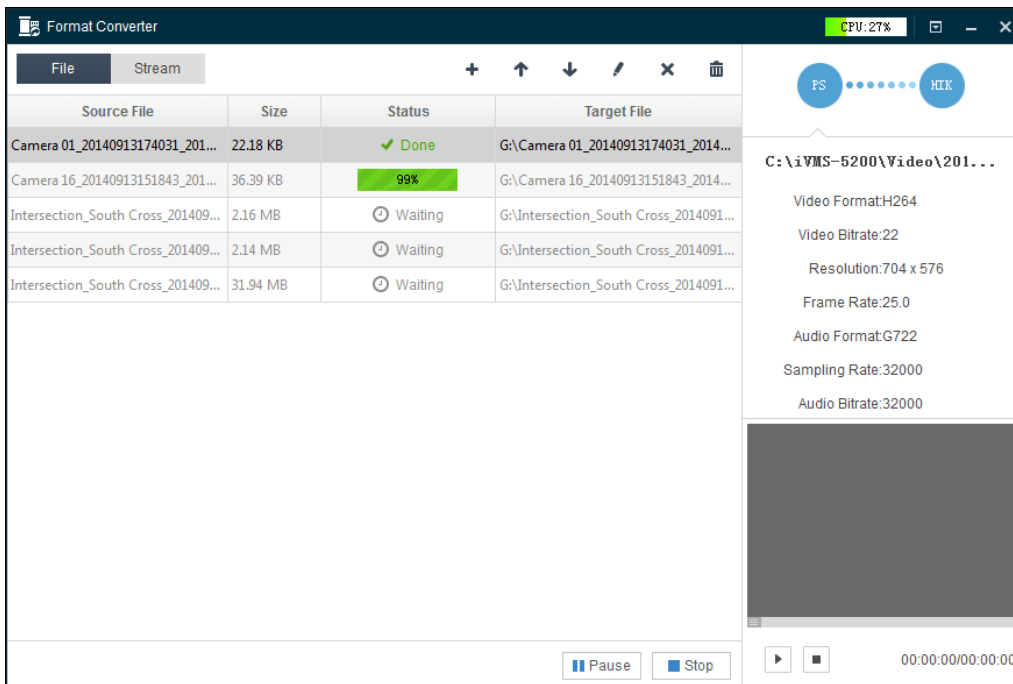
You can also select a file and click  to play the video of the file.

Start Converting

Steps

1. Click **Start** to convert all the added files.
2. You can click **Pause** to pause the conversion, and click **Stop** to stop the conversion.

The status of the converted files will be shown as *Done*. You can right-click on the file list area, and select **Delete Completed Items** under **Clear** to remove the successfully converted files from the list.



Check the Target Files



Right-click on the stream list and select **Open Saving Path** to pop up the folder that stores the target files.

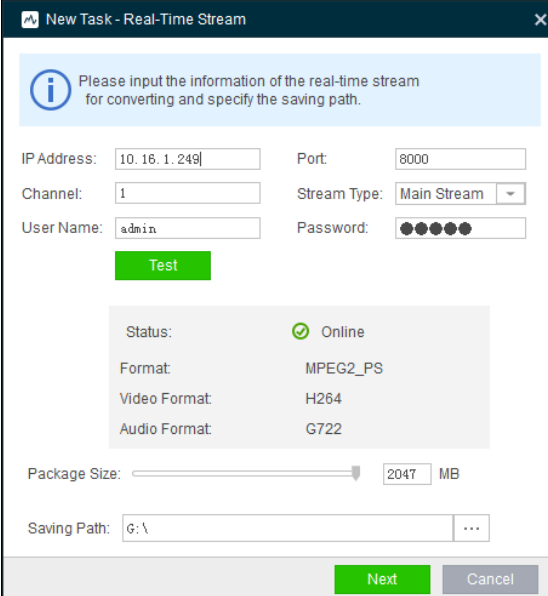
Chapter 4 Converting Real-Time Stream

You can connect the real-time stream of the online devices for converting.

4.1 Connecting Real-Time Stream

Steps:

1. Select **Stream** tab, click  to pop up the New Task window. You can also right-click on the file list area and select **Add Task**.
2. Input the required parameters.
IP Address: Enter the IP address of the device to get stream from.
Port: Input the port No. of the device.
Channel: Set the channel No.. If you input 3, then the stream of channel 3 of the device will be gotten.
Stream Type: The software will get the selected stream of the channel.
User Name: Input the user name of the device.
Password: Input the password of the device.
3. Click **Test** to connect to the real-time stream. If connected, the status will be displayed as *Online* and the format information will show.
4. Set the package size of the converted file. The maximum size of the converted file will be the configured value.
5. Click  and select the saving path for storing the target (converted) file.



New Task - Real-Time Stream


Please input the information of the real-time stream for converting and specify the saving path.

IP Address: 10.16.1.249 Port: 8000

Channel: 1 Stream Type: Main Stream

User Name: admin Password: ●●●●●●


Test

Status:  Online

Format: MPEG2_PS

Video Format: H264

Audio Format: G722

Package Size:  2047 MB

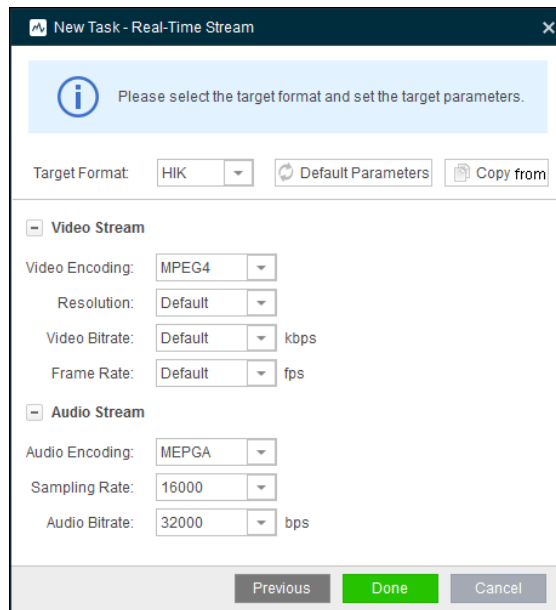
Saving Path: G:\

Next **Cancel**

6. Click **Next** and edit the conversion parameters for the file.
You can click **Default Parameters** to use the default settings for converting.
You can also click **Copy from** and select a added file or stream to copy the conversion settings from it.

- **Target Format:** Select the format to convert to. Multiple formats are supported for converting to, you can select one according to actual needs.
- **Video Encoding:** Select the encoding type for video stream of the file.
- **Resolution:** Select the resolution for the file. You can also select Custom to set the resolution as desired.
- **Video Bitrate:** Select the bitrate for the video stream of the file.
- **Frame Rate:** Select the frame rate for the file. You can also select Custom to set the resolution as desired.
- **Audio Encoding:** Select the encoding type for audio stream of the file.
- **Sampling Rate:** Select the sampling rate for the file.
- **Audio Bitrate:** Select the bitrate for the audio stream of the file.

Note: Some parameters may be not supported by the source file.



7. Click **Done** to save the settings and the stream will be added to the list.


4.2 Converting Real-Time Streams

After adding the streams to the stream list, you can convert the streams to the target format. The successfully added streams list on the stream list panel.

View Information

On the right panel, you can click left blue circle to check the information of the stream, and click left blue circle to check that of the target file.

Check the Video

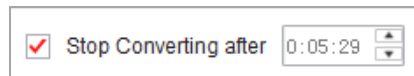
You can also select a stream and click  to start the live view of it.

Start Converting

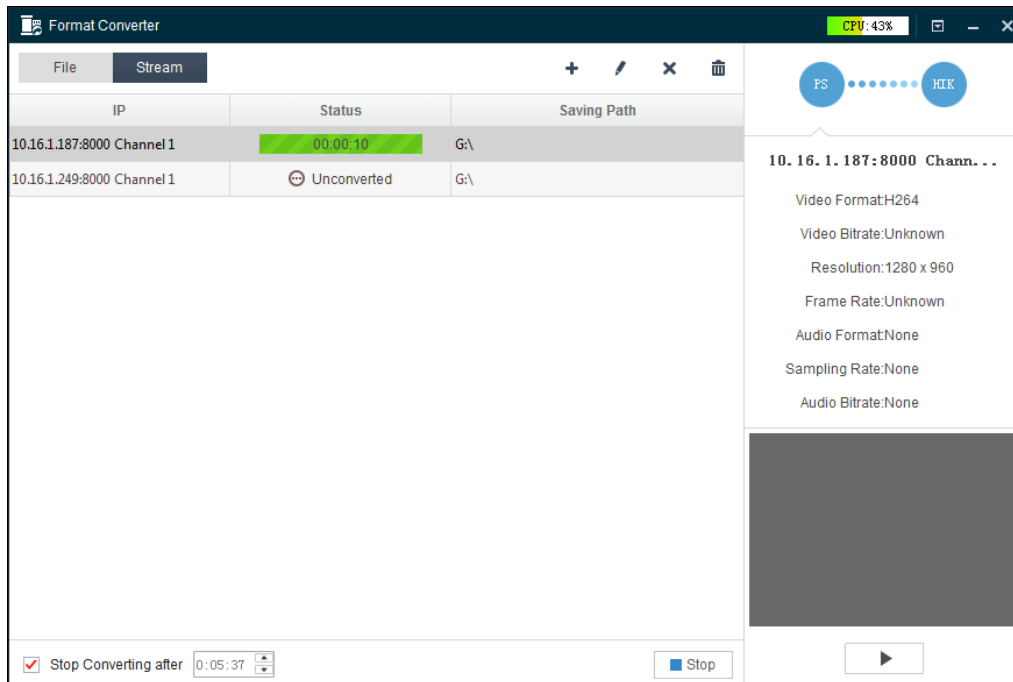
Steps:

1. Click to select a stream.

2. Click **Start** to convert the selected stream. The status of the stream will display the time length of the conversion process.
(Optional) You can set the time duration and check the checkbox **Stop Converting after**. Then the conversion will stop after the configured time duration.



3. You can click **Stop** to stop the conversion.



Check the Target Files

Right-click on the stream list and select **Open Saving Path** to pop up the folder that stores the target files.



www.webwarrior.com