

Congratulations on your purchase of the best dog running attachment on the planet! The Moved By Bikes Dog Runner has been designed to allow you to ride safely with your dog, to be quick and easy to remove from your bike without any tools, and to be highly adaptable to just about any bike.

The bar is mounted securely to the seatpost of the bike and extends out providing a secure attachment point. The integrated leash has a spring system to absorb impacts, and is adjustable in firmness and length. The push button quick release allows for instant removal when not in use or transitioning your dog. Ride safe with your pup.



PRO TIP #1

Do it right the first time - click over to the Dog Runner Page at movedbybikes.com for a short video on proper installation.

USE THIS PRODUCT SAFELY

Riding a bicycle is an inherently dangerous activity. Riding with a dog further increases your risk of injury and should be done with the greatest of care. Be sure that you maintain your bicycle and check bolts and fasteners on the runner before every use as they may loosen up over time. Always ride under control, be alert, and follow the rules of the road.

QUICK AND EASY MOUNTING TO YOUR BICYCLE SEATPOST

See reverse side for quick and easy installation and configuration instructions. The seatpost clamp fits round posts 25-35mm in diameter. We do not recommend attaching to carbon fiber posts as they may be damaged.

TOOLS

A 5mm Allen Key is used for the seatpost clamp bolts and adjustments. A 3mm Allen key is used for the set screw feature that provides additional resistance to twisting of the clamp.

PRO TIP #2

Stainless nuts and bolts are prone to galling. To prevent this, use a common stainless steel anti-seize on the threads during assembly

COMPATIBILITY

The Dog Runner Bar is compatible with the full line of MBB Surfboard Racks. If you have a Surfboard Rack installed on your bike, you can plug the Dog Runner Bar into the Surfboard Rack mounts.

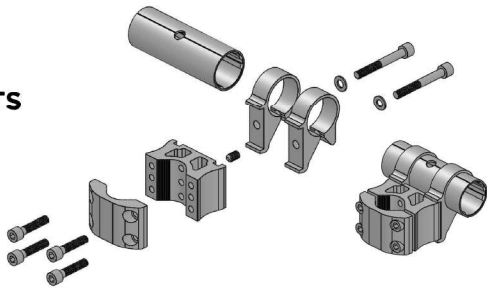


- 1.** If your dog isn't used to riding along with a bike, you may need to get them familiar with it
- 2.** Consider keeping your dog on a regular leash, and walking with the bike at first
- 3.** Start your first rides on a straightaway, and watch your speed closely to match theirs



- 4.** Be sure to set the height and leash tension for your dog. It should be loose enough for them to move around a bit, but short enough to keep them from running into the moving parts of the bike.
- 5.** Be mindful of your dogs needs including drinking water and relieving themselves.

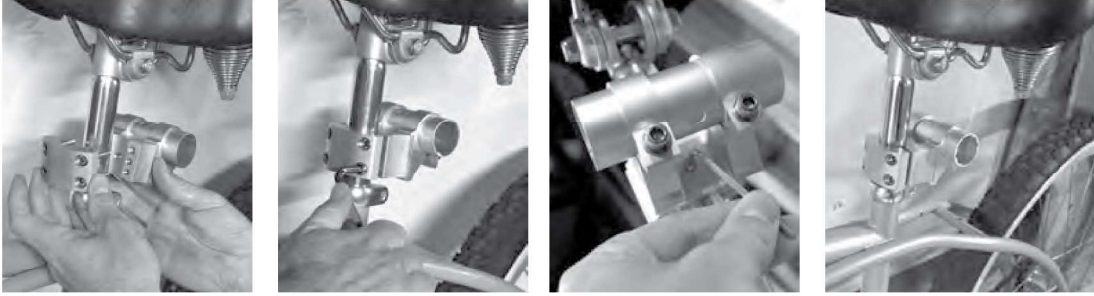
SEATPOST MOUNT COMPONENTS



SEATPOST MOUNTING LOCATION

SEATPOST INSTALLATION

1. Loosen and remove the four 5mm bolts on the Seatpost Clamp. Place the clamp around the post and reinstall / tighten the bolts.
2. Tighten the set screw to prevent rotation of the mount on your post. Use the rear facing 5mm bolts to adjust the rotation angle of the mounted tube.



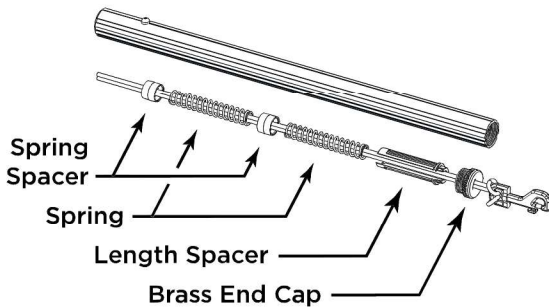
Note: To get maximum performance out of the set screw, consider setting its height before tightening the clamp bolts, to make a bigger indentation into the seatpost with the point of the screw as you tighten the clamp bolts.



Note: For smaller dogs, it may make sense to attach the seatpost clamp to the frame, to get it lower.

LEASH AND SPRING CONFIGURATION

- The bar assembly comes pre-configured with two springs and one length spacer, and a nominal length leash. To make adjustments simply unscrew the brass end cap to reveal the inner components.
- The plastic length spacers can be snapped in and out to quickly adjust the leash length without having to untie the leash cord knot.
- Additional springs make the leash “softer” which is often better for smaller dogs. Adjust the number of springs by untying the leash cord knot. Always use a plastic spring spacer between the springs and at the end to support the knot.



CHECK THAT THE BRASS END CAP IS TIGHT BEFORE EVERY RIDE.

Monitor the leash condition. Eventually it may start to show signs of wear and need replacement. The leash is 4mm paracord, readily available in a wide range of colors.



Install the Rack Tube into the mounted tube by lining up the splines and sliding it in until the push button locks in place. That's all there is to it - you're ready to clip in your dog and go!



Learn more about our products at MovedByBikes.com