

TABLEUP™ HEIGHT ADJUSTABLE BASE - 3 LEGS AND WORKSURFACES

Price Effective - September 19, 2022



ELECTRIC HEIGHT ADJUSTABLE

TableUP, our US made height adjustable table bases deliver quality, flexibility, and functionality at an affordable cost. Built to exceed industry standards and configured to meet your budget, TableUP bases are the foundation for a healthy and ergonomic workspace.



- 2-Stage height adjustment range – 27” to 46” (excluding worksurface)
- 3-Stage extended height adjustment range – 21.5” to 47.5” (excluding worksurface)
- Meets California freestanding height adjustable table requirements
- 3-Leg base configurations, 90° and 120° layouts, supports 250lbs lifting capacity
- Ergonomically designed to allow for under-mount keyboard drawer installation
- Programmable or up/down hand set available
- Powered by built-in motors in each leg for a smooth and quiet motion
- Lifting and lowering speed - 1.25” per second
- Meets BIFMA X5.5 standards, UL 962 approved
- Base finish options - Silver, Black and White

WORKSURFACE AVAILABLE SEPARATELY

- Minimum Order Quantity of 4 Worksurfaces
- Top size: 24” – 30” depth
 - 90° configuration up to 72” width
 - 120° configuration up to 60” width (worksurfaces not available through MergeWorks in 120° configuration)
- High Pressure Laminate (HPL) worksurface with coordinating or solid 3mm edgeband
- Predrilled grommet hole with coordinating grommet available in various locations on worksurfaces

TABLEUP™ HEIGHT ADJUSTABLE BASE - 3 LEGS - 90° AND 120° CONFIGURATION

Worksurfaces are not available through MergeWorks in 120° base configuration

How to build your SKU:



HEIGHT ADJUSTABLE BASE - 3 LEGS

Model	Handset Control	Base Color
TU3-2 TableUP™ 2-Stage - 90°	U-T Up/Down -Touch	SV Silver
TU3-3 TableUP™ 3-Stage - 90°	P-T Programmable Control	WT White
TU3-2 TableUP™ 2-Stage - 120°		BK Black
TU3-3 TableUP™ 3-Stage - 120°		

TABLEUP™ ELECTRIC HEIGHT ADJUSTABLE BASE - 3 LEGS

90° CONFIGURATIONS

Model #	Base	Stage	Hand Set	Weight	List Price
TU3-2U-T	3 Legs-90°	2-Stage	Up/Down Hand Set	70 lbs.	\$1,756
TU3-2P-T	3 Legs-90°	2-Stage	Programmable Hand Set	70 lbs.	\$1,926
TU3-3U-T	3 Legs-90°	3-Stage	Up/Down Hand Set	80 lbs.	\$2,123
TU3-3P-T	3 Legs-90°	3-Stage	Programmable Hand Set	80 lbs.	\$2,293



TU3-2 TABLEUP™ 2-STAGE HEIGHT ADJUSTABLE BASE ONLY



TU3-3 TABLEUP™ 3-STAGE HEIGHT EXTENDED ADJUSTABLE BASE ONLY



Up/Down Hand Set



Programmable Hand Set

120° CONFIGURATIONS

Model #	Base	Stage	Hand Set	Weight	List Price
TU3-2U-T	3 Legs-120°	2-Stage	Up/Down Hand Set	70 lbs.	\$1,756
TU3-2P-T	3 Legs-120°	2-Stage	Programmable Hand Set	70 lbs.	\$1,926
TU3-3U-T	3 Legs-120°	3-Stage	Up/Down Hand Set	80 lbs.	\$2,123
TU3-3P-T	3 Legs-120°	3-Stage	Programmable Hand Set	80 lbs.	\$2,293



TU3-2 TABLEUP™ 2-STAGE HEIGHT ADJUSTABLE BASE ONLY



TU3-3 TABLEUP™ 3-STAGE HEIGHT EXTENDED ADJUSTABLE BASE ONLY

2-Stage height adjustment range - 27" to 46" and 200lb lifting capacity
 3-Stage extended height adjustment range - 21.5" to 47.5" and 250lb lifting capacity
 Meets CA freestanding height adjustment table requirements
 Pricing in USD

WORKSURFACES

MergeWorks' worksurfaces are made from High Pressure Laminate (HPL) with a coordinating or solid color 3mm edge band. Extremely functional, versatile and durable HPL worksurfaces are scratch, water and impact resistant. Worksurfaces are available for 3-Leg 90° configuration only.

How to build your SKU:

Step 1: Choose your Worksurface	Step 2: Choose your Return Worksurface	Step 3: Choose your Laminate Color	Step 4: Choose your Edgeband	Step 5: Choose your Grommet Location	Step 6: Choose your Return Grommet	Step 7: Choose your Grommet Color	*Step 8: Choose your options Anti-Sag Bar
WS-7224	WSR-1836	L110	EM	C	C	GB	HL

*(Recommended for worksurfaces 60" or wider)

TABLEUP™ WORKSURFACES

Rectangular Worksurface	Return Worksurface	Laminate Color	Edgeband	Grommet Location	Return Grommet	Grommet Color	Recommended Anti-Sag Bar (Optional)
WS-4824 48"w x 24"d	WSR-1836 18"w x 36"d	L1 Standard Laminate	EM Matching	N No Grommet	N No Grommet	GS Silver	VL V-Channel for worksurfaces 60"-66"
WS-4830 48"w x 30"d	WSR-1842 18"w x 42"d	L3 Premium Laminate	EP Multi-plywood	L Left	L Left	GB Black	HL Hat-Channel for worksurfaces 72"-84"
WS-5424 54"w x 24"d	WSR-1848 18"w x 48"d		ES Silver	C Center	C Center	GW White	
WS-5430 54"w x 30"d	WSR-2436 24"w x 36"d		EB Black	R Right	R Right		
WS-6024 60"w x 24"d	WSR-2442 24"w x 42"d		EW White	LC Left & Center			
WS-6030 60"w x 30"d	WSR-2448 24"w x 48"d			LR Left & Right			
WS-6624 66"w x 24"d	WSR-3036 30"w x 36"d			CR Center & Right			
WS-6630 66"w x 30"d	WSR-3042 30"w x 42"d			LCR Left, Center & Right			
WS-7224 72"w x 24"d	WSR-3048 30"w x 48"d						
WS-7230 72"w x 30"d							
WS-8424 84"w x 24"d							
WS-8430 84"w x 30"d							

RECTANGULAR HPL WORKSURFACE

Model #	Size	L100 Laminates	L300 Laminates	Recommended Anti-Sag Bar
WS-4824	48"w x 24"d	\$440	\$565	-
WS-4830	48"w x 30"d	\$490	\$615	-
WS-5424	54"w x 24"d	\$490	\$630	-
WS-5430	54"w x 30"d	\$545	\$685	-
WS-6024	60"w x 24"d	\$495	\$635	VL - \$75
WS-6030	60"w x 30"d	\$550	\$690	VL - \$75
WS-6624	66"w x 24"d	\$575	\$740	VL - \$75
WS-6630	66"w x 30"d	\$645	\$810	VL - \$75
WS-7224	72"w x 24"d	\$580	\$745	HL - \$88
WS-7230	72"w x 30"d	\$655	\$820	HL - \$88
WS-8424	84"w x 24"d	\$760	\$975	HL - \$88
WS-8430	84"w x 30"d	\$855	\$1,070	HL - \$88

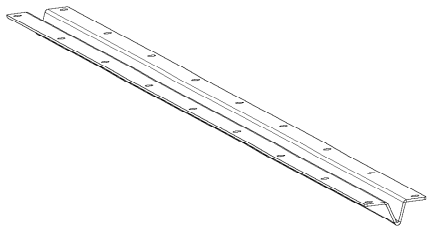


TU3-2 TABLEUP™ 90°
2-STAGE HEIGHT EXTENDED ADJUSTABLE
WITH WORKSURFACE

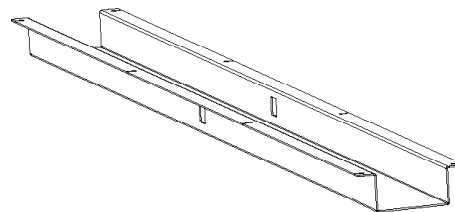


TU3-3 TABLEUP™ 90°
3-STAGE HEIGHT EXTENDED ADJUSTABLE
WITH WORKSURFACE

ANTI-SAG BARS



VL - \$75
V-channel for 60"-66" wide worksurfaces



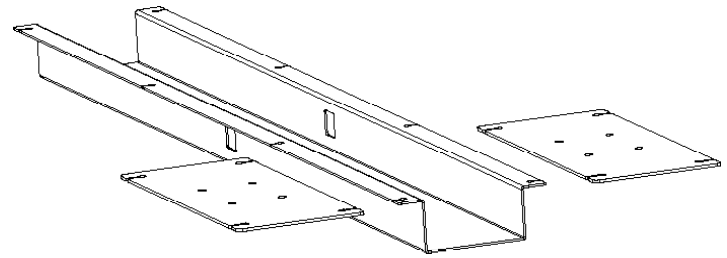
HL - \$88
Hat channel for 72"-84" wide worksurfaces

MINIMUM ORDER QUANTITY OF 4 WORKSURFACES

TABLEUP™ WORKSURFACES

RETURN WORKSURFACE *

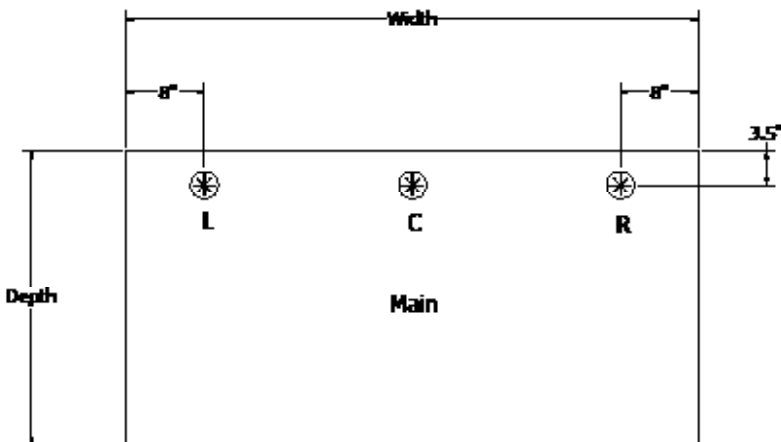
Model #	Size	L100 Laminates	L300 Laminates
WSR-1836	18"w x 36"d *	\$819	\$949
WSR-1842	18"w x 42"d *	\$819	\$949
WSR-1848	18"w x 48"d *	\$819	\$949
WSR-2436	24"w x 36"d *	\$819	\$949
WSR-2442	24"w x 42"d *	\$819	\$949
WSR-2448	24"w x 48"d *	\$819	\$949
WSR-3036	30"w x 36"d *	\$879	\$1,024
WSR-3042	30"w x 42"d *	\$879	\$1,024
WSR-3048	30"w x 48"d *	\$879	\$1,024



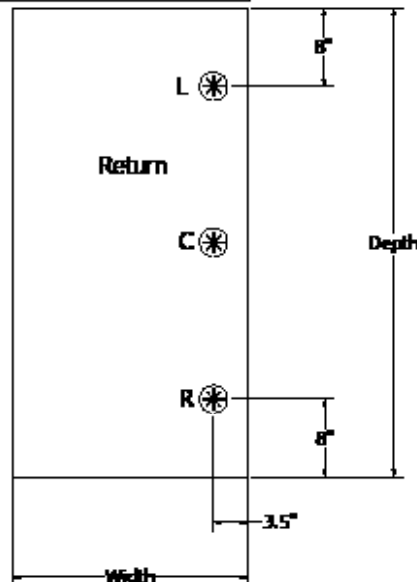
RT

*Return work surface connector hardware (included)

GROMMET LOCATION - MAIN WORKSURFACE



Model #	Location & Qty	Price
N	No Grommet	\$0
L	Left (1)	\$25
C	Center (1)	\$25
R	Right (1)	\$25
LC	Left & Center (2)	\$50
LR	Left & Right (2)	\$50
CR	Center & Right (2)	\$50
LCR	Left, Center & Right (3)	\$75



GROMMET LOCATION - RETURN WORKSURFACE

Model #	Location & Qty	Price
N	No Grommet	\$0
L	Left (1)	\$25
C	Center (1)	\$25
R	Right (1)	\$25

MINIMUM ORDER QUANTITY OF 4 WORKSURFACES

Pricing in USD

MATERIAL OPTIONS

LAMINATES AND WOODGRAINS HPL 100 SERIES



Phantom Ecu
L100



New Age Oak
L102



Black Walnut
L104



Bleached Legno
L105



Smokey Brown Pear
L106



Cafelle
L107



Blackened Legno
L108



Brite White
L109



Folkstone
L110



Huntington Maple
L118



Asian Night
L119



Fusion Maple
L120



Grey Elm
L121

LAMINATES AND WOODGRAINS HPL 300 SERIES



Antique Cognac Pine
L300



Recon Olive
L301



Repurposed
Oak Plank
L302



Small Planked
L303



Mocha Olive
L304



Lost Pine
L305



Antique Barrel
L306

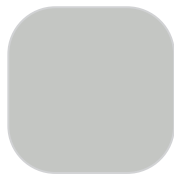


Reclaimed
Oak Plank
L307

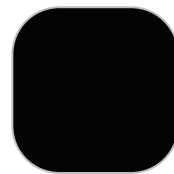
BASE FINISHES, GROMMET FINISHES, EDGE BAND FINISHES



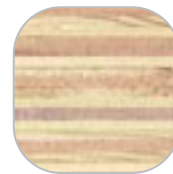
White
WT



Silver
SV



Black
BK



Multi-plywood
(Edgeband only)

MINIMUM ORDER QUANTITY OF 4 WORKSURFACES