

# M's RAM AIR SYSTEM

CARBON DUCT INTAKE KIT

## Installation Instructions

FR-S2000

S2000 AP1 K20A

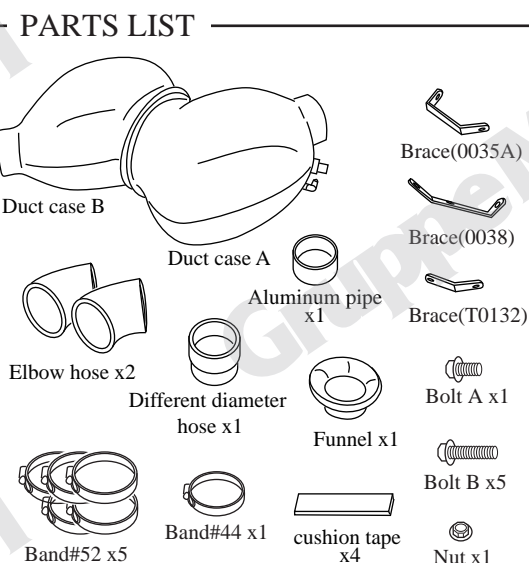
Thank you for buying the GruppeM Ram Air System  
Before installation, verify that you have all of the parts in the Parts List on the right.



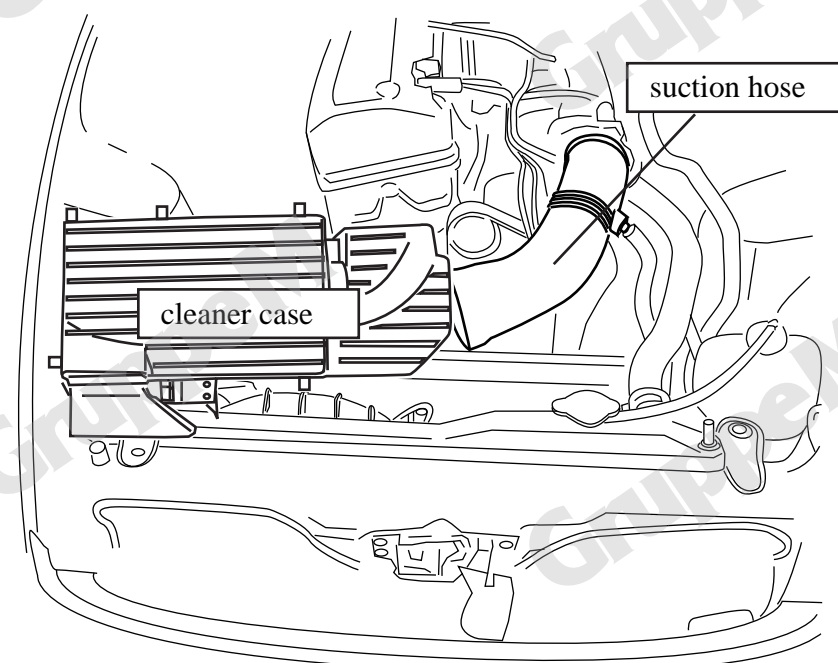
### CAUTION

- Please read the entire instruction manual before proceeding.
- Ensure you have all necessary tools before proceeding.
- Do not attempt to work on your vehicle when the engine is hot.
- Disconnect the negative battery terminal before proceeding.
- Retain factory parts and our installation manual for future use.
- GruppeM Inc. will not be held responsible for installations to any motor vehicle model other than the one specified.

### Removal of original cleaner box



- 1: Remove the cleaner case. (Remove the valve attached to the case once.)
- 2: Remove the hoses piping to the original suction hose and remove the suction hose.



### Ram air system installation

1: Assemble a elbow hose, an aluminum pipe and a different diameter hose to the duct case A.  
Assemble the curved hose and funnel to the duct case B.

2: Attach the valve removed from the original case to the brace(0038) with a screw used originally.  
I also change hoses. (see Attachment)

3: Move the wiring coupler with brace (T0132) as shown in "Figure 1".  
(Use of bolt A.B / nut)

4: Attach duct case A to the throttle body and fasten it to the frame of the body with a brace (0038) with bolt B. (See Figure 2)

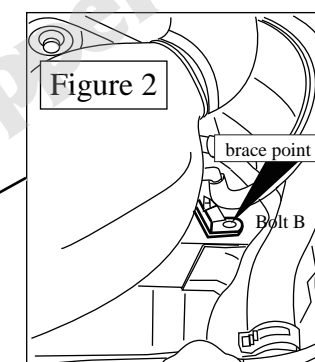
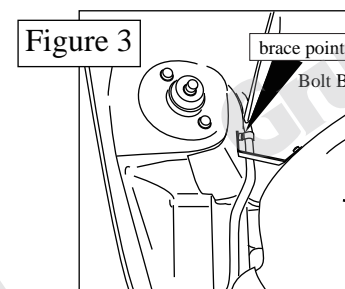
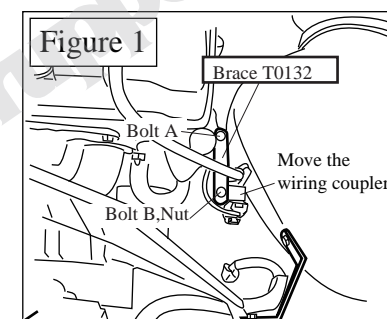
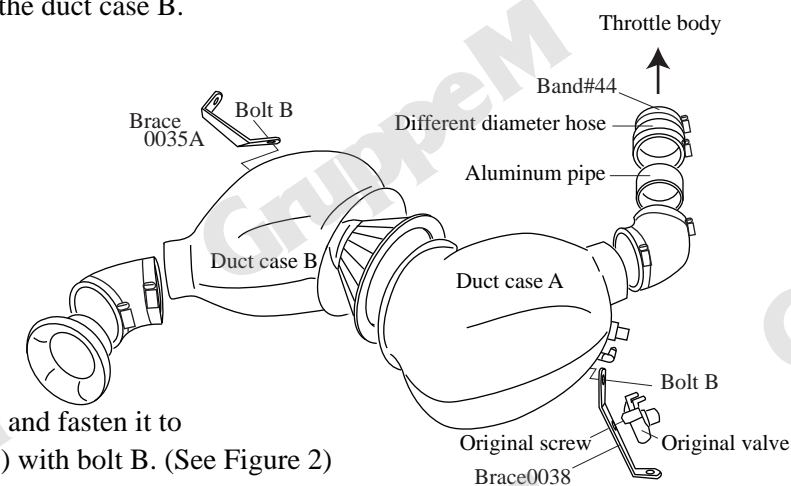
5: Hold the filter in the duct case B and assemble it with a band.  
At the same time fasten the body and duct case with braces (0035A). Use bolt B (see Figure 3)

6: Replace blowby hose, vacuum hose, etc.

7: Carefully fix each part's clearance.

※ A vehicle equipped with a strut tower bar may interfere with the rubber hose in the throttle section.

※ Because the lower part of the duct case, the radiator part and the funnel part may interfere, it is recommended to put a cushion tape. (Please cut and use the supplied cushion tape)



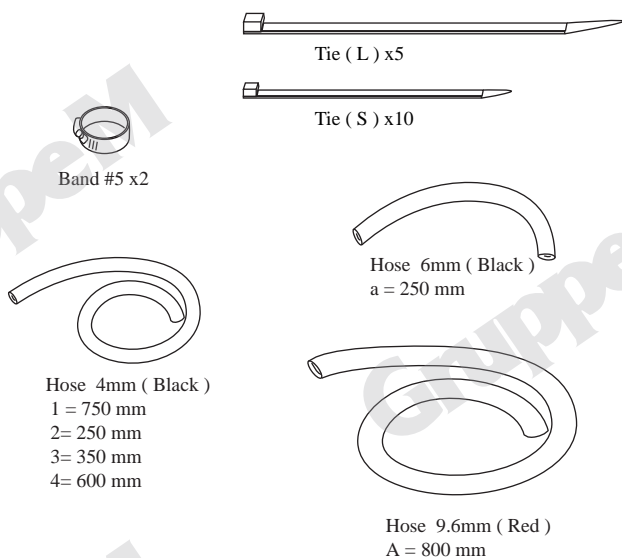
Copyright GruppeM Inc.©

# Ms RAM AIR SYSTEM

## Hose set

S2000 AP1 K20A

### PARTS LIST

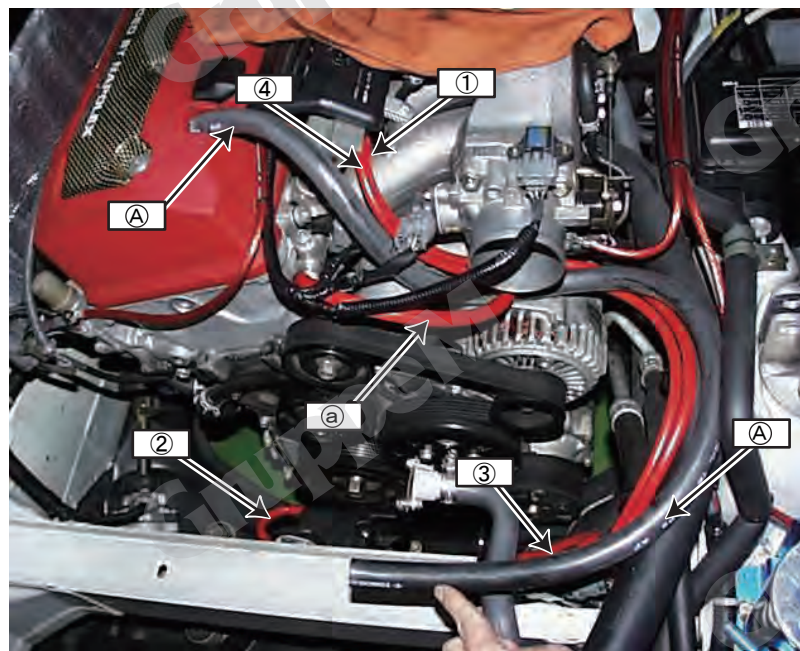


### Change hose set

1: Always replace the silicone hose one by one so that the piping is not incorrect. Hoses 1 and 4 are piped to the valve removed from the original case. Hose A piped to the nipple of cleaner case A.

2: Refer to the figure below for piping arrangement.

3: Use the supplied band and tie ( S ) for the hose joint. Please tie with tie ( L ) so that hoses do not vary.



# GruppeM INC.

Copyright GruppeM Inc.©