

Ms RAM AIR SYSTEM

CARBON DUCT INTAKE KIT

Installation Instructions

FR-0508

Honda Integra Type-R DC5 all model (Only the car of a right-hand drive)

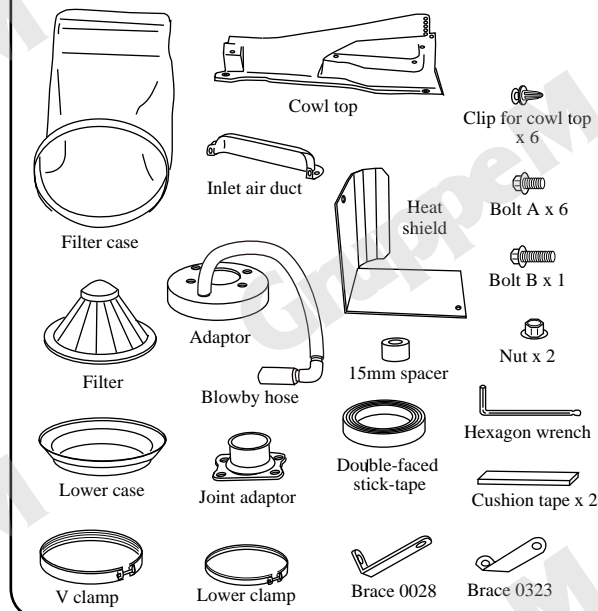
Thank you for buying the GruppeM Ram Air System
Before installation, verify that you have all of the parts in the Parts List on the right.



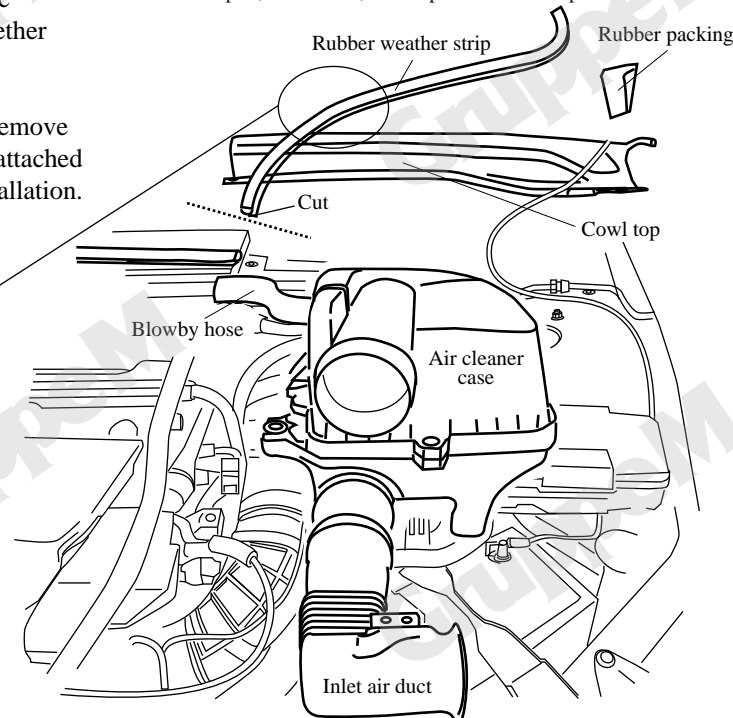
CAUTION

- Please read the entire instruction manual before proceeding.
- Ensure you have all necessary tools before proceeding.
- Do not attempt to work on your vehicle when the engine is hot.
- Disconnect the negative battery terminal before proceeding.
- Retain factory parts and our installation manual for future use.
- GruppeM Inc. will not be held responsible for installations to any motor vehicle model other than the one specified.

PARTS LIST



The adapter, lower case, v-clamp and filter are preassembled



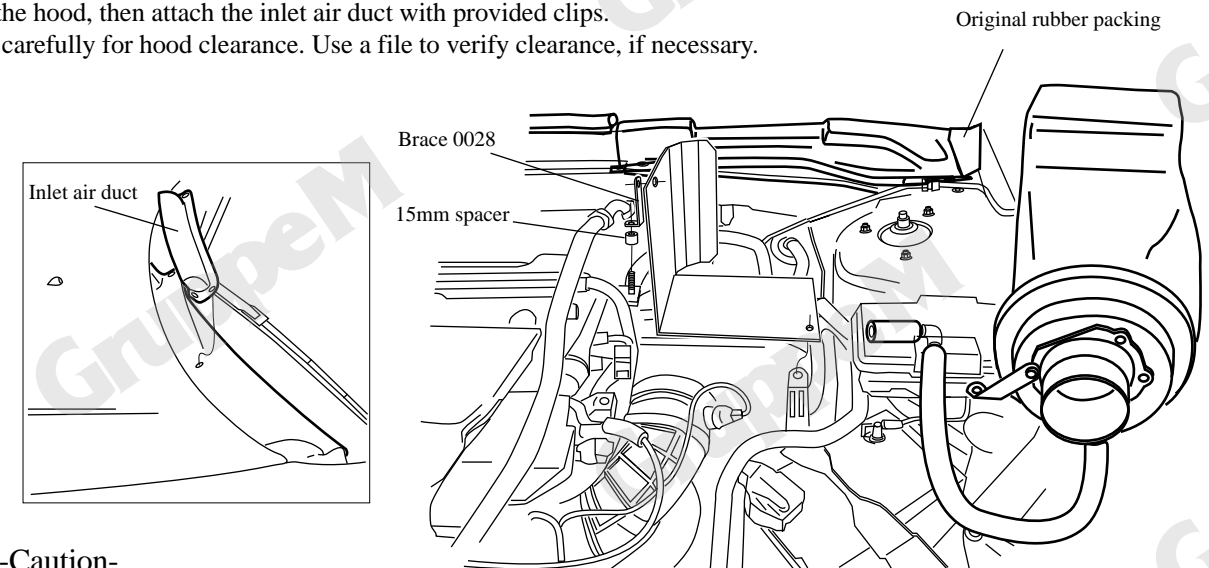
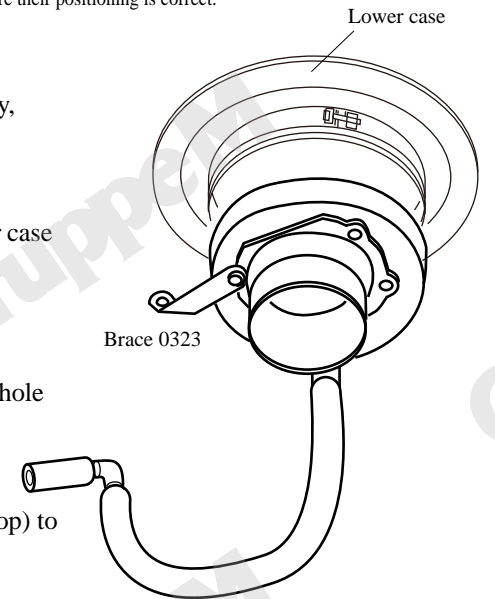
How to remove the rubber weather strip:

Insert a flat-blade screwdriver in the gap, then remove the weather strip together with the clip.

Install Ram Air System

Note: To make each operation easier, first, assemble all parts together loosely. Only tighten after you are sure their positioning is correct.
If the duct rubs against the part of the engine, or body, please attach the cushion tape.

1. Assemble the adaptor, joint adaptor, brace 0323.
Attach the provided blowby hose to the nipple. If it does not go on easily, loosen a little, then insert.
2. Fasten brace 0028 to the heat shield, then attach this unit to the body.
(See illustration below.) To attach, insert bolt A in the original air cleaner case fastening hole, and place the spacer then brace 0028 on the stud bolt, and fasten with the original nut.
3. Attach the adaptor assembly you assembled in Step 1 to the original intake hose, and insert bolt A into the original air cleaner case fastening hole to fasten the brace.
Re attach the blow-by hose.
4. Attach the rubber packing (which you removed from the original cowl top) to the provided cowl top, then attach this assembly to the car body.
Use provided clips for the front, and stick with tape on the glass side.
Attach the rubber weather strip to the cowl top.
5. Couple the lower case to the adaptor assembly, which you assembled in Step 3. Place the filter between the filter case and the lower case, then fasten with a clamp. Attach the cushion tapes where the strut tower bar rubs against the filter case.
6. Close the hood, then attach the inlet air duct with provided clips.
Check carefully for hood clearance. Use a file to verify clearance, if necessary.



-Caution-

- * The filter case has a drain hole, but do not drive in the rain with the inlet air duct fully open.
- * The inlet air duct is removable. Remove or attach, depending on conditions.
- * Before washing the car, cover the inlet air duct to prevent water from entering the intake system.

Copyright GruppeM Inc. ©