

# Ms RAM AIR SYSTEM

## CARBON DUCT INTAKE KIT

### Installation Instructions

FR-0407

GDA/GDB Impleza(F,G) EJ20T

Thank you for buying the GruppeM Ram Air System  
Before installation, verify that you have all of the parts in the Parts List on the right.



#### CAUTION

- Do not install on a road or other place that could interfere with automobile or pedestrian traffic.
- Park on flat, horizontal ground with the emergency brake on, to prevent the vehicle from rolling. Remove the key from the ignition and let the engine cool down completely before beginning installation.
- Wear work clothes suitable for the job. When necessary, wear protective gloves and glasses.
- After installation, regular maintenance is necessary. Periodically check for realignment, clearance, and tightening of all components.
- GruppeM Inc. will not be held responsible for installations to any motor vehicle model other than the one specified.
- Keep these instructions in a safe place after using them.

Speeding and reckless driving are completely unacceptable. Please use this product with care, following all traffic regulations.

## Remove original air cleaner

Wiring of an air mass sensor is removed and an original introductory duct is removed.

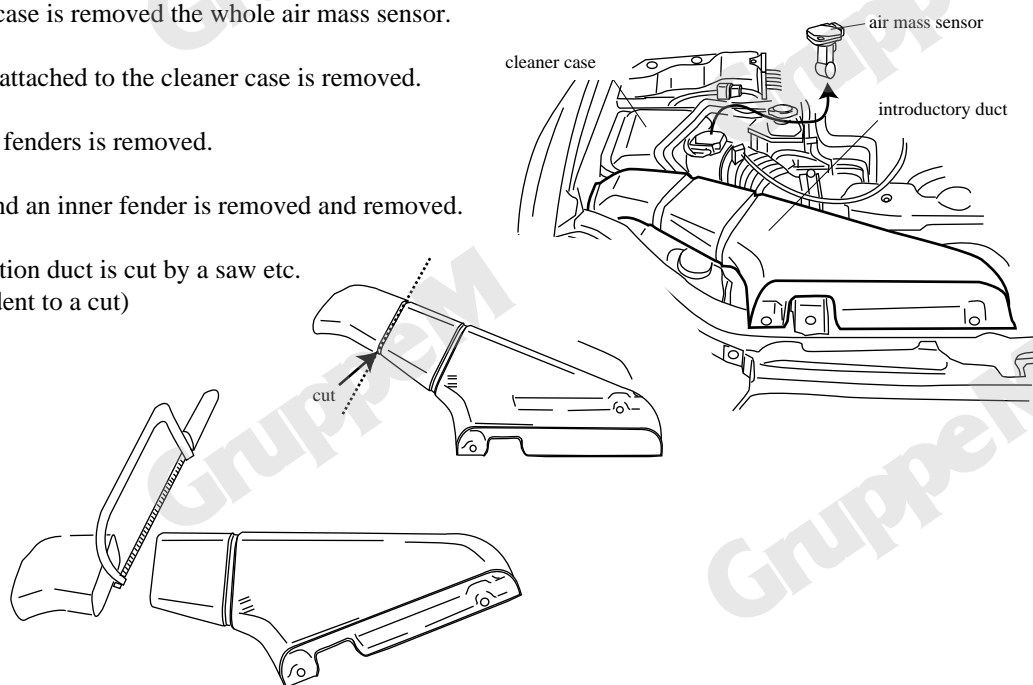
An original cleaner case is removed the whole air mass sensor.

The air mass sensor attached to the cleaner case is removed.

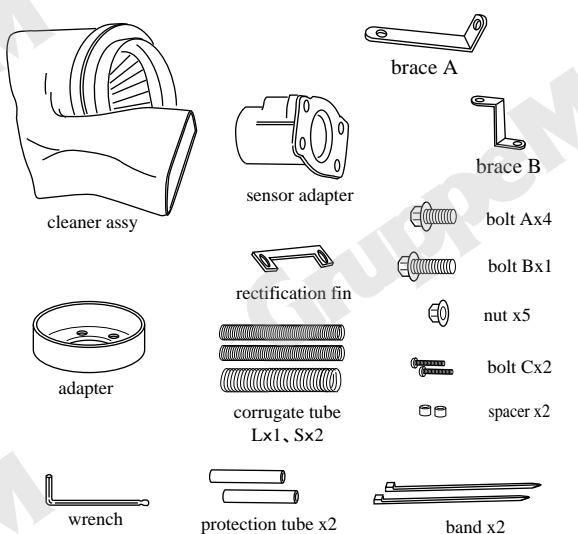
The resonator of the fenders is removed.

A tire is removed, and an inner fender is removed and removed.

An original introduction duct is cut by a saw etc.  
(From the part of a dent to a cut)



#### PARTS LIST



The adapter, lower case, v-clampe and filter are presassembled

## Install Ram Air System

Note: To make each operation easier, first, assemble all parts together loosely. Only tighten after you are sure their positioning is correct.  
If the duct rubs against the part of the engine, or body, please attach the cushion tape.

An adapter, a sensor adapter and brace are assembled like an illustration using an attached bolt and a nut.

A rectification fin is pinched between an adapter and a funnel.  
(It is cautious of direction of a rectification fin)

It fixes to the attached adapter original intake hose.  
the air-conditioner pipe under an intake hose is boiled, and the attached corrugate tube s is put.  
(Refer to the following figure)

A brace is fixed to an original case fixed hole with an original bolt.

Cleaner assy is once taken into pieces and lower case is fixed to an adapter, and a filter and a filter case are made to slide, and it arranges, and fixes by a V-clamp.

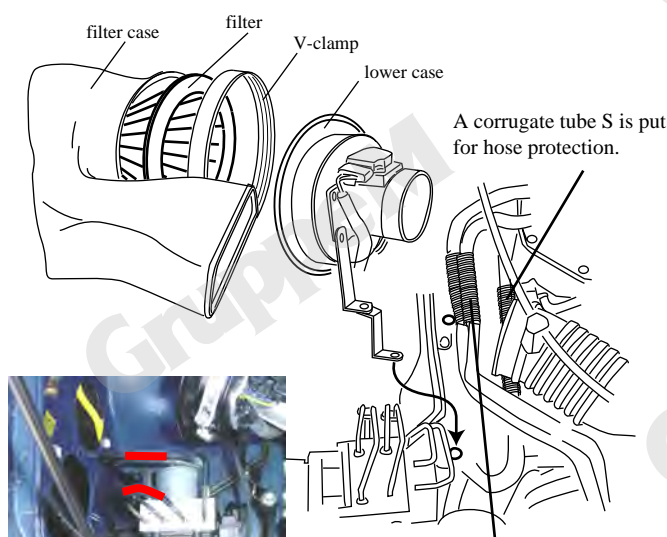
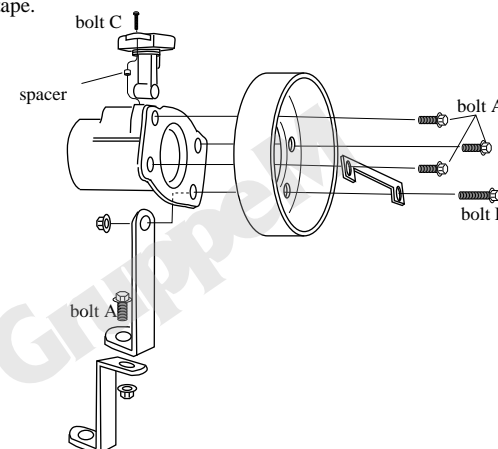
The original introduction duct cut into the filter case is inserted, and it fixes to the original position.

Corrugate tube ( L and S ) is put on two reservoir hose and the hose which a clamp hits, respectively, and is protected on it.

It lets two pass under a sensor adapter.

A protection tube is put on two places of the pipe of ABS.

It does not hit with a bonnet or a bonnet is shut slowly.



A corrugate tube S is put for hose protection.



A protection tube is put on ABS piping of the red line mark.

A corrugate tube L, M is put for hose protection. It lets a hose pass under the Airflow adapter.



If a weather strip is cut and removed, more effective open air introduction can be done.  
But please avoid the high speed operation in the time of a heavy rain.

Copyright GruppeM Inc.©