

Ms RAM AIR SYSTEM

INTAKE COMPONENT

取扱説明書

FR-0405

BE5/BH5 Legacy typeD ('01.5~'03.6) EJ20T

Thank you for buying the GruppeM Ram Air System
Before installation, verify that you have all of the parts in the Parts List on the right.



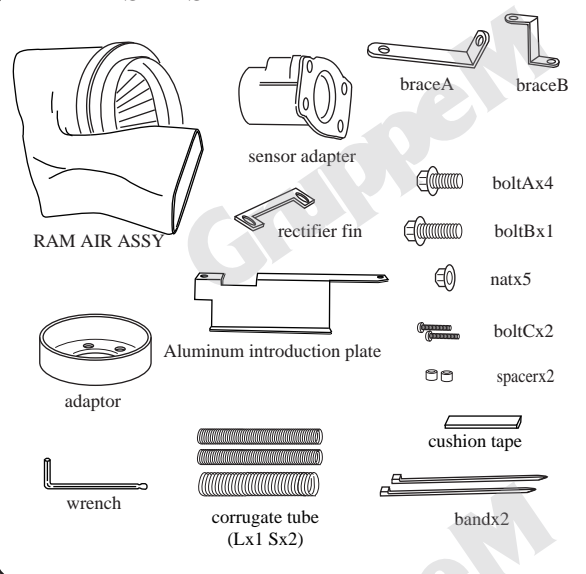
CAUTION

- Do not install on a road or other place that could interfere with automobile or pedestrian traffic.
- Park on flat, horizontal ground with the emergency brake on, to prevent the vehicle from rolling. Remove the key from the ignition and let the engine cool down completely before beginning installation.
- Wear work clothes suitable for the job. When necessary, wear protective gloves and glasses.
- After installation, regular maintenance is necessary. Periodically check for realignment, clearance, and tightening of all components.
- GruppeM Inc. will not be held responsible for installations to any motor vehicle model other than the one specified.
- Keep these instructions in a safe place after using them.

Speeding and reckless driving are completely unacceptable. Please use this product with care, following all traffic regulations.

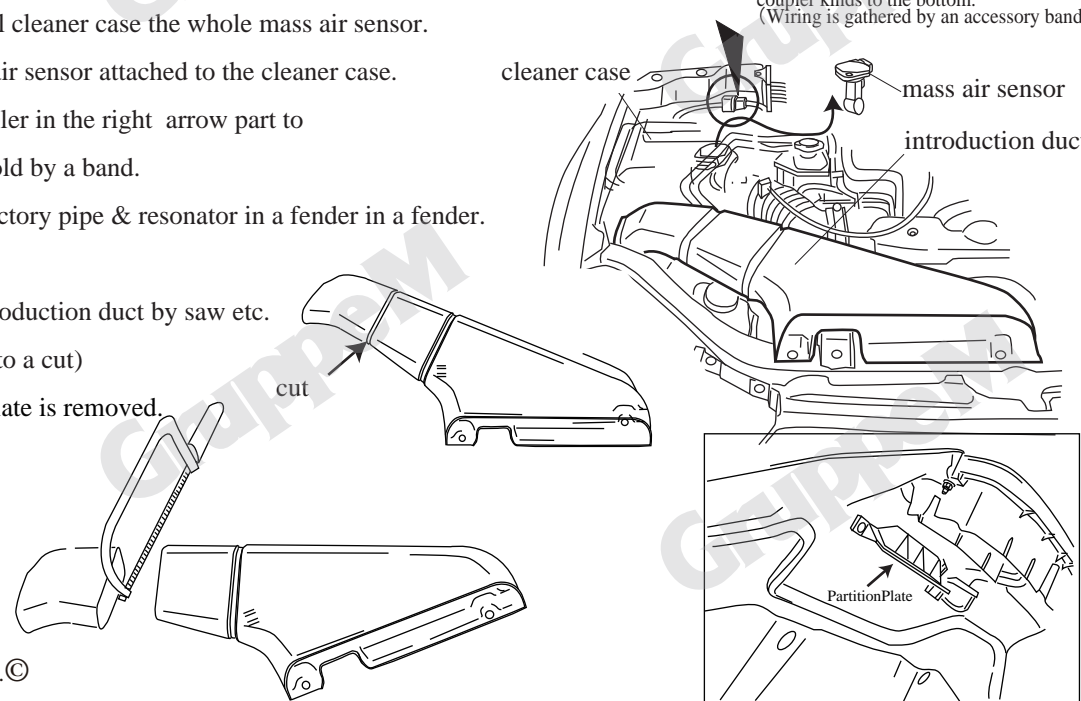
Remove original air cleaner

PARTS LIST



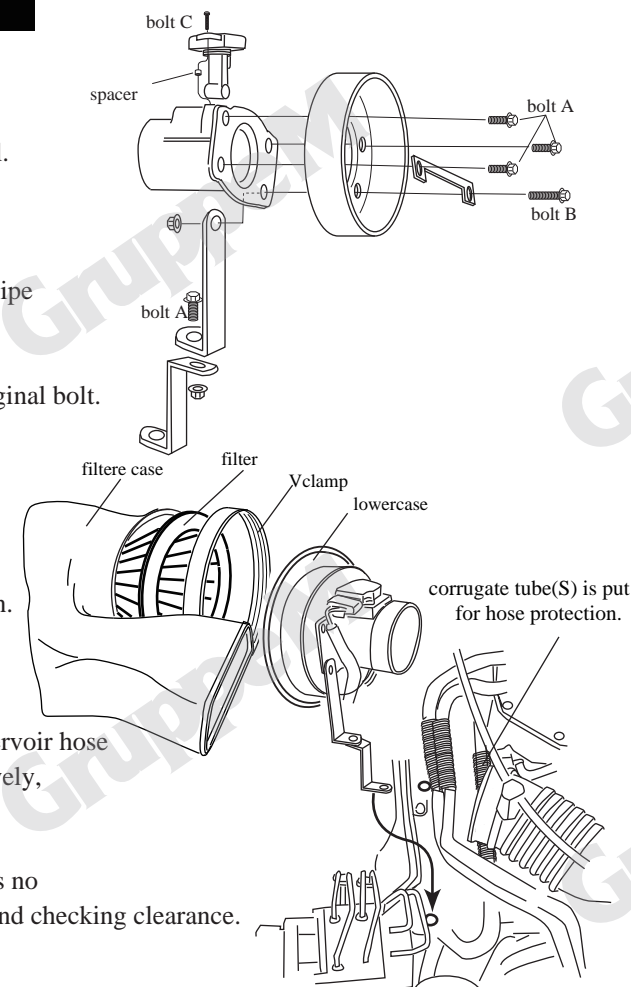
The adapter, lower case, v-clamp and filter are preassembled

- 1: Remove mass air sensor electrical connection and remove an original introduction duct.
※remove wiring fixation and move coupler kinds to the bottom. (Wiring is gathered by an accessory band.)
- 2: Remove an original cleaner case the whole mass air sensor.
- 3: Remove the mass air sensor attached to the cleaner case.
- 4: move a wiring coupler in the right arrow part to a lower way and hold by a band.
- 5: Push in the introductory pipe & resonator in a fender in a fender. Or all are removed.
- 6: Cut an original introduction duct by saw etc. (From a dent portion to a cut)
- 7: A back Partition Plate is removed.



Install Ram Air System

- 1: Assemble an adapter, a sensor adapter, and Brace like a picture using an attached bolt and a nut. A rectifier fin is pinched between an adapter and a funnel. (It is cautious of direction of a rectifier fin)
- 2: Attach the attached adapter to an original intake hose. Attached corrugate tube(small) is put on the aluminum pipe under an intake hose. (Refer to the following picture)
- 3: Fix brace to an original filter case fixed hole with an original bolt.
- 4: Take Cleaner assy into pieces once, attach lowercase to an adapter, arrange so that it may let a filter and a filter case slide, and attach by Vclamp.
- 5: Put the original introduction duct in the original location. installed together around an aluminum introduction plate under the original introduction duct.
- 6: Put the corrugate tube Large and small on a radiator reservoir hose and the hose of the interference part of Vclamp, respectively, and protect them on them.
- 7: Carry out each part increase bundle fixation after there is no interference with a bonnet, or shutting a bonnet slowly and checking clearance.



- * When there is a portion in which it interferes after wearing, please stick an attached cushion tape if needed. Moreover, please summarize wiring etc. in an attached band.

