

Ms RAM AIR SYSTEM

CARBON DUCT INTAKE KIT

Installation Instructions

FR-0201

Z33 Fairlady Z VQ35DE ('02 - '06)

Thank you for buying the GruppeM Ram Air System
Before installation, verify that you have all of the parts in the Parts List on the right.



CAUTION

- Do not install on a road or other place that could interfere with automobile or pedestrian traffic.
- Park on flat, horizontal ground with the emergency brake on, to prevent the vehicle from rolling. Remove the key from the ignition and let the engine cool down completely before beginning installation.
- Wear work clothes suitable for the job. When necessary, wear protective gloves and glasses.
- After installation, regular maintenance is necessary. Periodically check for realignment, clearance, and tightening of all components.
- GruppeM Inc. will not be held responsible for installations to any motor vehicle model other than the one specified.
- Keep these instructions in a safe place after using them.

Speeding and reckless driving are completely unacceptable. Please use this product with care, following all traffic regulations.

Remove original air cleaner

It removes undercover one of a front.
(14 bolts, one clip)

A front bumper is removed.
(Four bolts, six clips, four tapping screws)

The details of the removal process should work according to a maintenance document.

Wiring of an air mass sensor is removed and it is a cleaner about an original cleaner.

The whole case is removed.

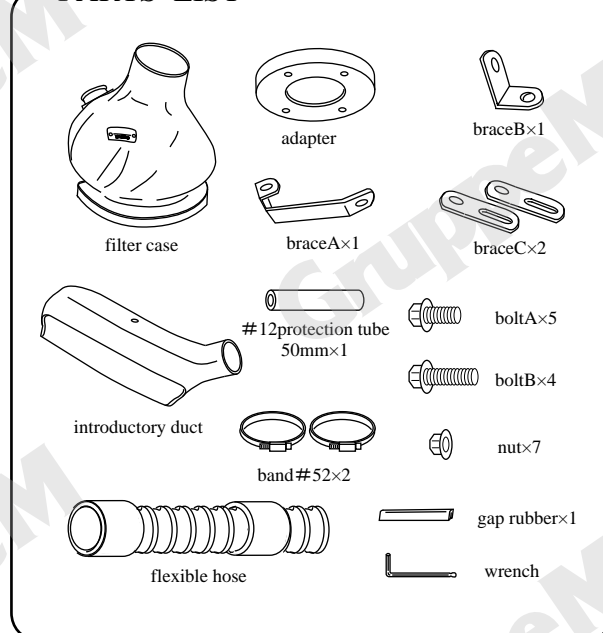
The bracket of an original case is also removed simultaneously.

An air mass sensor is removed from a cleaner case.

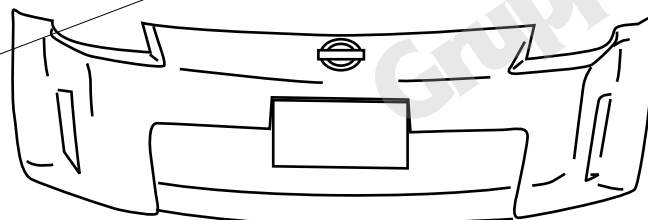
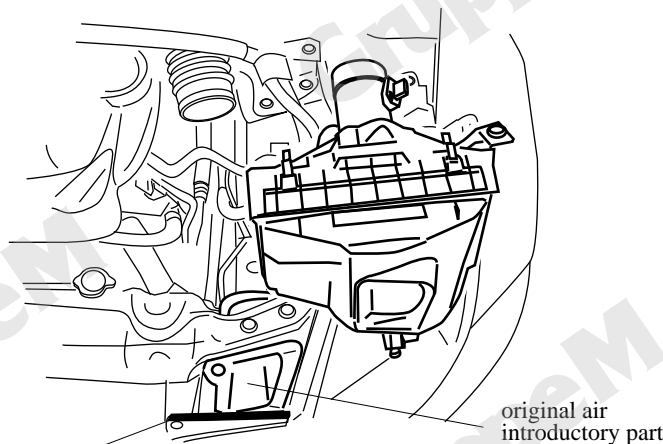
A bracket is shifted and an original air introductory part is removed.

Please attach attached gap rubber to a bumper bracket.

PARTS LIST



The adapter, lower case, v-clamp and filter are presassembled

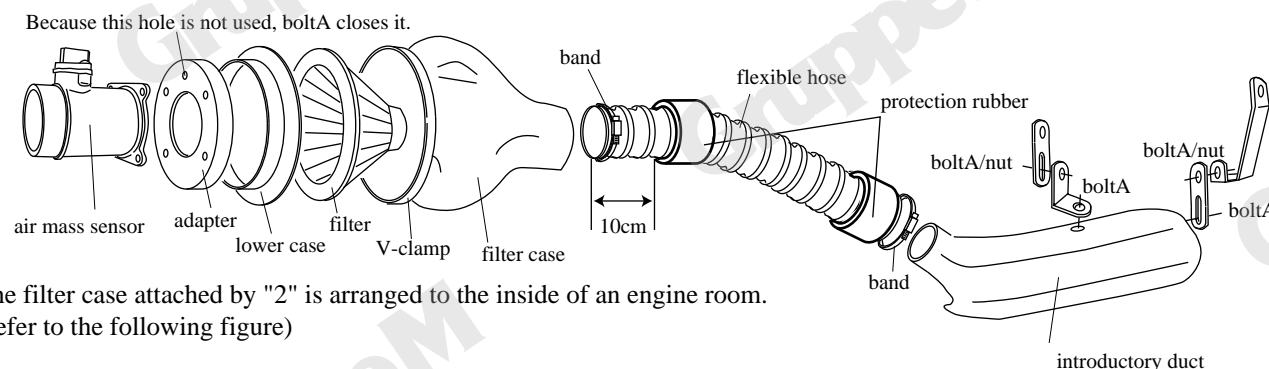


Install Ram Air System

Note: To make each operation easier, first, assemble all parts together loosely. Only tighten after you are sure their positioning is correct.
If the duct rubs against the part of the engine, or body, please attach the cushion tape.

1. An adapter is installed in an air mass sensor using boltB and a nut.
brace is installed in an introductory duct.

2. A flexible hose is installed in a filter case.



3. The filter case attached by "2" is arranged to the inside of an engine room.
(Refer to the following figure)

4. The adapter attached to the original intake hose by "1" is installed.

5. On both sides of a filter, a band fastens between an adapter and a filter case.
Because the hose of a band and an air conditioner interferes, attached #12 protection tube is put on the hose of an air conditioner.

6. An introductory duct is inserted between radiator and a bumper and brace is fixed.
(Refer to the following figure)

The introductory duct can move height up and down.

If it fixes under, open air introduction is more effective, but cautions are needed for permeation of water, such as the time of a heavy rain.

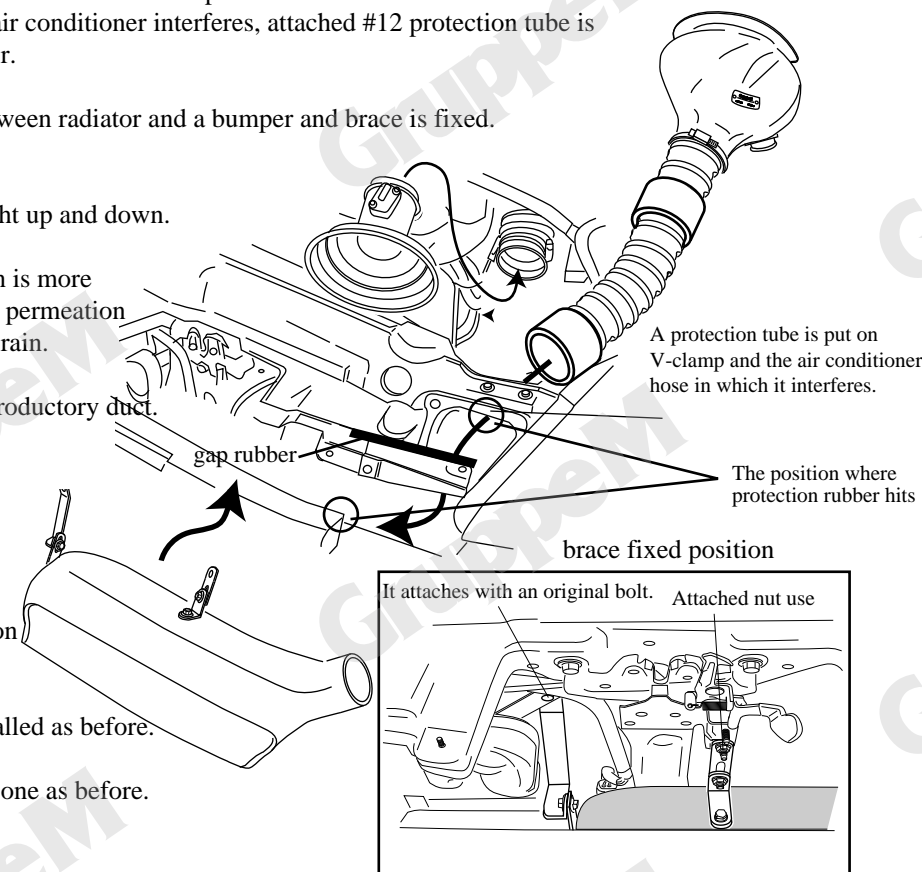
7. A flexible hose is installed in an introductory duct.

Please confirm whether protection rubber is in a body angle part and the position in which it interferes in that case.

Please adjust the position of protection rubber if needed.

8. Wiring of an air mass sensor is installed as before.

9. It installs a bumper and undercover one as before.



GruppeM INC. 3-12-24 Saiwaicho, Asaka-shi, Saitama, Japan. zip 351-0015
TEL: +81-48-450-2911 FAX: +81-48-450-2912

Copyright GruppeM Inc. ©