

Ms RAM AIR SYSTEM

CARBON DUCT INTAKE KIT

Installation Instructions

FR-0137

LEXUS LC500 URZ100 V8-5.0L

Thank you for buying the GruppeM Ram Air System
Before installation, verify that you have all of the parts in the Parts List on the right.

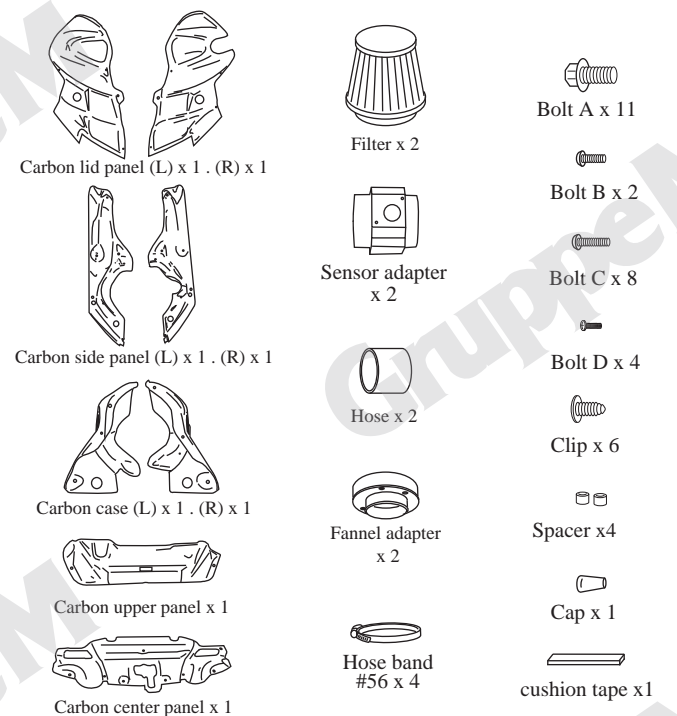
CAUTION

- Do not install on a road or other place that could interfere with automobile or pedestrian traffic.
- Park on flat, horizontal ground with the emergency brake on, to prevent the vehicle from rolling. Remove the key from the ignition and let the engine cool down completely before beginning installation.
- Wear work clothes suitable for the job. When necessary, wear protective gloves and glasses.
- After installation, regular maintenance is necessary. Periodically check for realignment, clearance, and tightening of all components.
- GruppeM Inc. will not be held responsible for installations to any motor vehicle model other than the one specified.
- Keep these instructions in a safe place after using them.

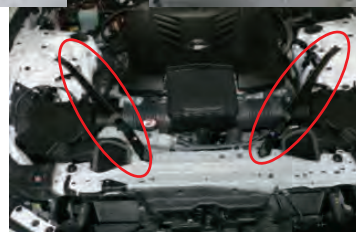
Speeding and reckless driving are completely unacceptable. Please use this product with care, following all traffic regulations.

Installation of ram air system

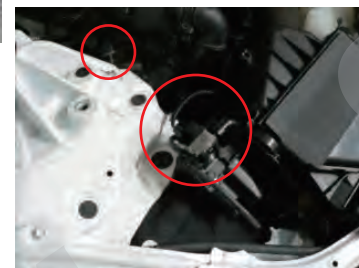
PARTS LIST



1. Remove the clip and remove the engine compartment panels indicated by the red circles.



2. Remove the support bars.



3. Remove the solenoid coupler and remove the vacuum hose.



4. Remove the air mass sensor coupler.



5. Lift the box and remove the hose as shown. Take out the box.



6. Remove the air mass sensor and solenoid valve.



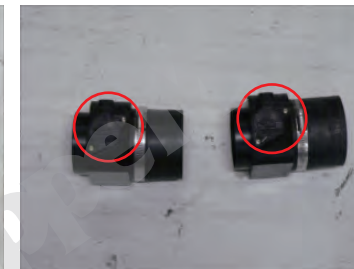
7. Take out the opposite box as well.



8. Remove the air mass sensor.



9. Attach the hose to the sensor adapter.



10. Attach the mass sensor to the sensor adapter. Secure the spacer with bolt D.



11. Install the funnel adapter securing it to the carbon case with bolt A.



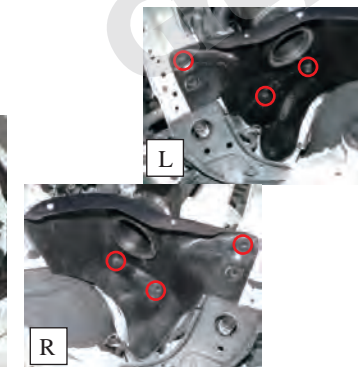
12. Attach the filter to the funnel adapter.



13. Attach the air flow adapter assembly to the funnel adapter.



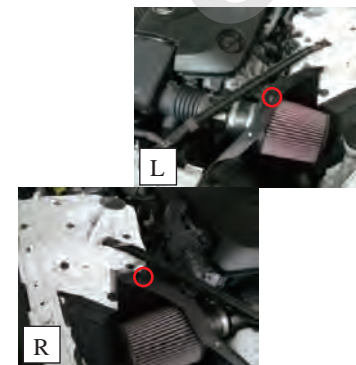
14. Place the carbon case assembly in the engine compartment and attach it to the suction hose.



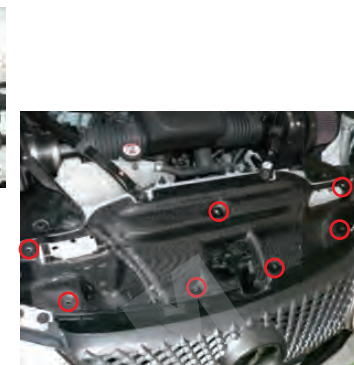
15. Remove the clip in the hole of carbon case. (the receiving side of the clip is a rubber bushing).



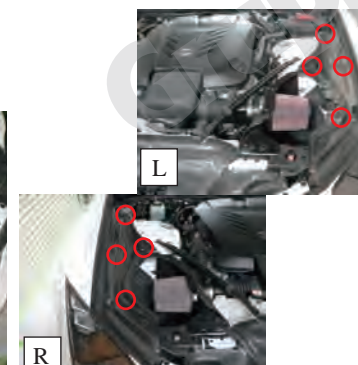
16. Attach the support bar to the vehicle as it was originally.



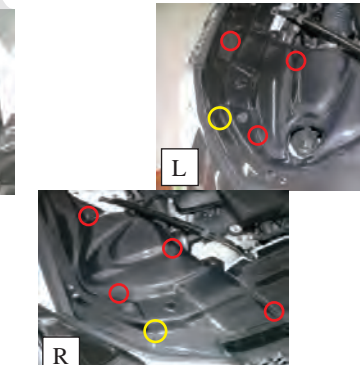
17. Attach the carbon case to the support bar with bolt A.



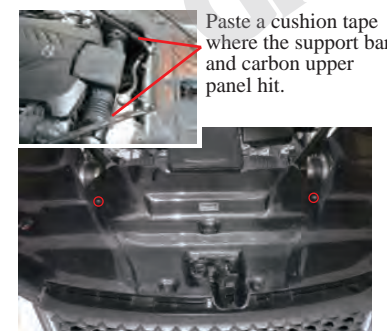
18. Secure the carbon center panel with the 7 genuine (OEM) clips.



19. Secure each carbon side panel with 4 genuine clips as indicated.



20. Fix the carbon lid panel with bolt C indicated by the red circle and bolt B indicated by yellow circle.



21. Secure the carbon upper panel with two genuine clips.



22. Fix solenoid valve to carbon case with bolt A.



23. Cap the negative vacuum nipple.



24. Retighten all bolts, fasteners, check clearances and re-check everything is secure.

GruppeM INC. 3-12-24 Saiwaicho, Asaka-shi, Saitama, Japan. zip 351-0015
TEL: +81-48-450-2911 FAX: +81-48-450-2912

Copyright GruppeM Inc. ©