

# Ms RAM AIR SYSTEM

## CARBON DUCT INTAKE KIT

### Installation Instructions

FR-0059

MITSUBISHI LANCER evo7.8.9

Thank you for buying the GruppeM Ram Air System

Before installation, verify that you have all of the parts in the Parts List on the right.



#### CAUTION

- Do not install on a road or other place that could interfere with automobile or pedestrian traffic.
- Park on flat, horizontal ground with the emergency brake on, to prevent the vehicle from rolling. Remove the key from the ignition and let the engine cool down completely before beginning installation.
- Wear work clothes suitable for the job. When necessary, wear protective gloves and glasses.
- After installation, regular maintenance is necessary. Periodically check for realignment, clearance, and tightening of all components.
- GruppeM Inc. will not be held responsible for installations to any motor vehicle model other than the one specified.
- Keep these instructions in a safe place after using them.

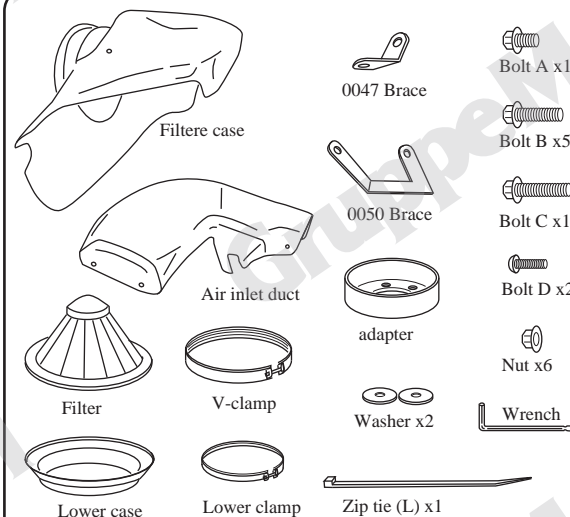
Speeding and reckless driving are completely unacceptable. Please use this product with care, following all traffic regulations.

#### Installation of ram air system

1. Remove the air inlet duct.
2. Disconnect the MAF (air sensor) coupler and loosen the intake hose clamp.
3. Remove the OEM intake box and MAF (air sensor).
4. Remove the brackets from the OEM intake box.
5. Remove the MAF (air sensor) from the intake box.

\* Because fan controller wearing is carried out under the original air inlet duct, transfer to an EVO9 A/T vehicle.

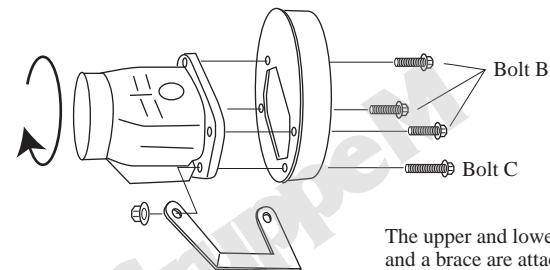
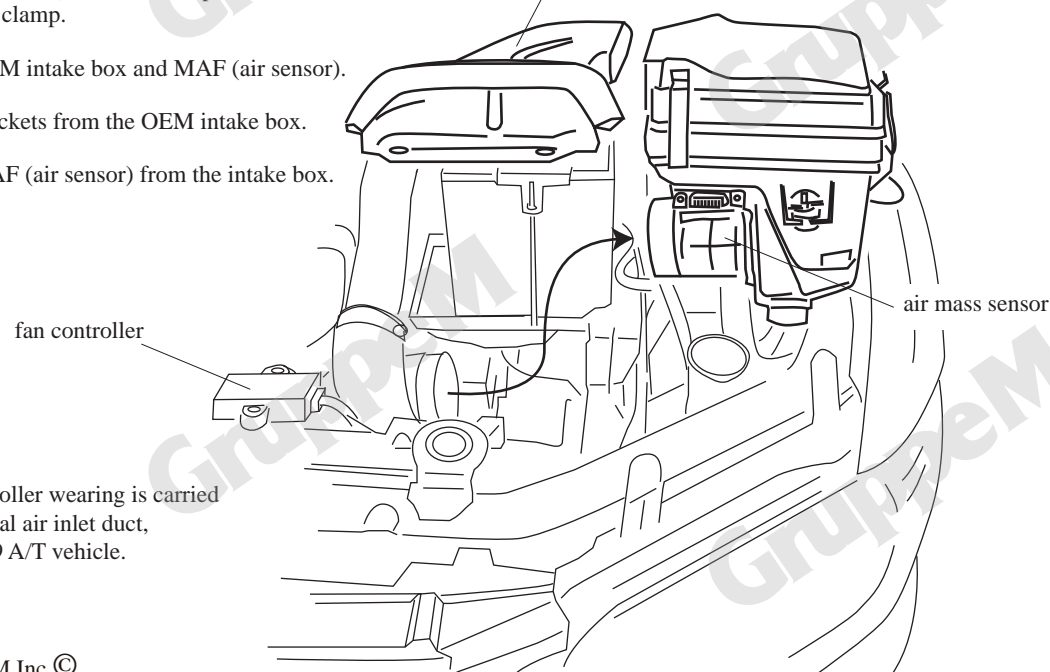
#### PARTS LIST



\* Screws remain by the vehicles grade with which it equips.

The adapter, lower case, v-clampe and filter are presassembled

air inlet duct



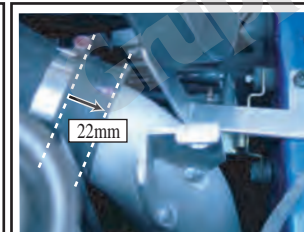
The upper and lower sides are made upside-down, and an adapter and a brace are attached so that the wiring part of an air mass sensor may become downward.



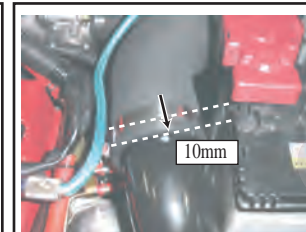
6. Attach the MAF to the OEM and secure with the hose band.



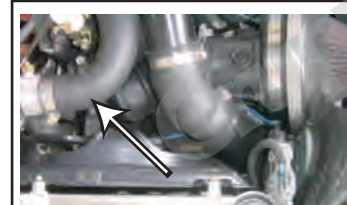
7. Secure the MAF with the brace (part# 0050) as seen here in the picture.



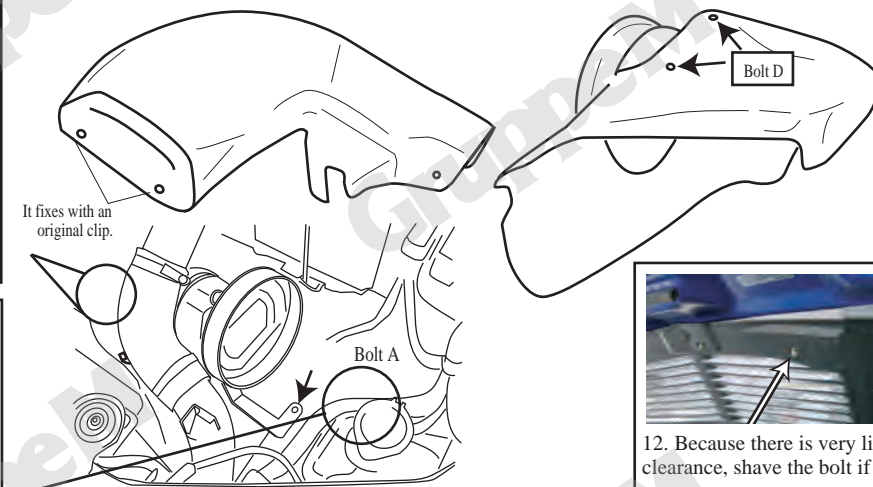
8. Move the hose clamp 22mm and slip over the brace to secure it.



9. Move the hose clamp 10 mm and slip over the brace to secure it.



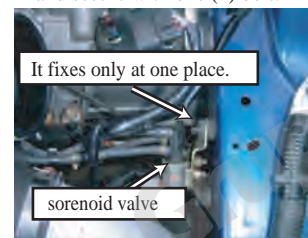
10. Secure the BOV hose to the radiator hose using the supplied zip tie.



It fixes with an original clip.

EVO8.9 M/T vehicle

11. Relocate the boost solenoid and secure with one (1) bolt.



It fixes only at one place.

solenoid valve



13. Relocate the fan controller as seen here. Mount with brace 0047, bolt B, a nut, and washer.

Fan controller



14. Mount the inlet duct to the filter case using bolt D to secure. The part of the inlet duct that contacts the body is secured to the original clip.

15. Installation is now complete. Thank you for choosing GruppeM.