

# Ms RAM AIR SYSTEM

CARBON DUCT INTAKE KIT

## Installation Instructions

FR-0044

ALTEZZA SXE10 3S-GE

Thank you for buying the GruppeM Ram Air System  
Before installation, verify that you have all of the parts in the Parts List on the right.

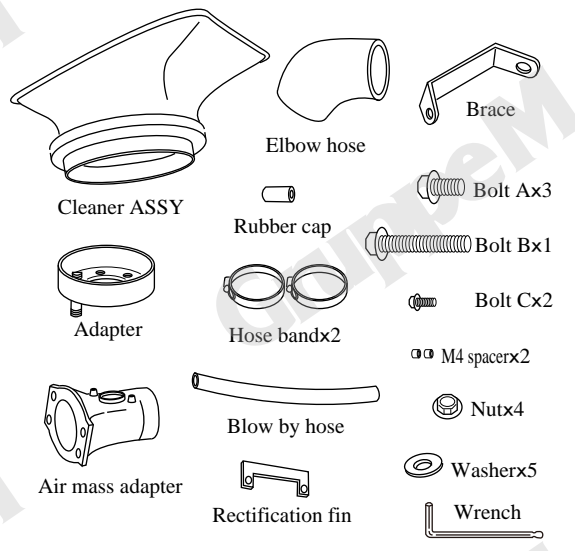


### CAUTION

- Do not install on a road or other place that could interfere with automobile or pedestrian traffic.
- Park on flat, horizontal ground with the emergency brake on, to prevent the vehicle from rolling. Remove the key from the ignition and let the engine cool down completely before beginning installation.
- Wear work clothes suitable for the job. When necessary, wear protective gloves and glasses.
- After installation, regular maintenance is necessary. Periodically check for realignment, clearance, and tightening of all components.
- GruppeM Inc. will not be held responsible for installations to any motor vehicle model other than the one specified.
- Keep these instructions in a safe place after using them.

Speeding and reckless driving are completely unacceptable. Please use this product with care, following all traffic regulations

### PARTS LIST

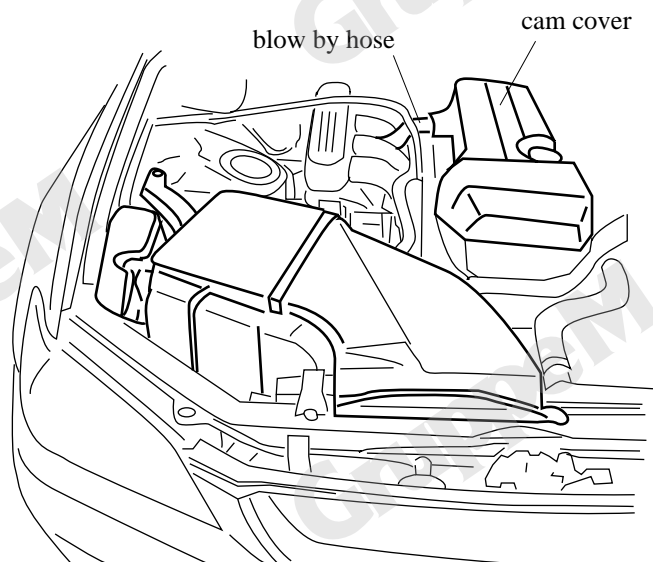


The adapter, lower case, v-clamp and filter are preassembled

## Remove original air cleaner

- \* Please work after removing the minus terminal of a battery before work.  
(A computer study arrangement is done after the end of work.)

- 1: Remove wiring of an air mass sensor and VSV.  
(A VSV hose is extracted by the throttle part side.)
- 2: Remove an original cleaner the whole cleaner case.
- 3: Remove an air mass sensor from an air cleaner case.  
\* Warn not to drop enough to the handling of the Airflow sensor.
- 4: Remove a cam cover by an attached wrench and remove a blow by hose.



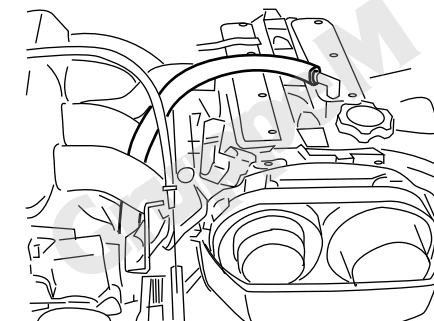
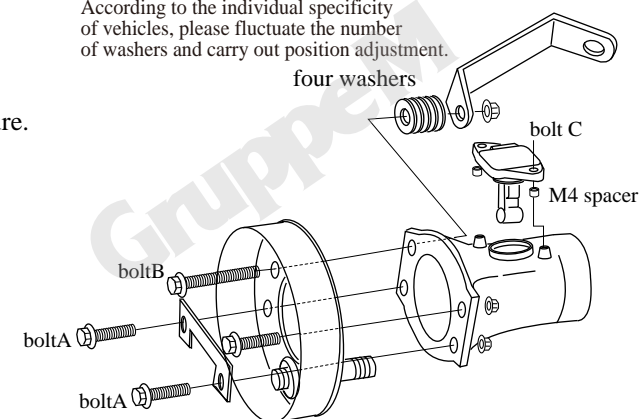
## Install Ram Air System

Note: To make each operation easier, first, assemble all parts together loosely. Only tighten after you are sure their positioning is correct.  
If the duct rubs against the part of the engine, or body, please attach the cushion tape.

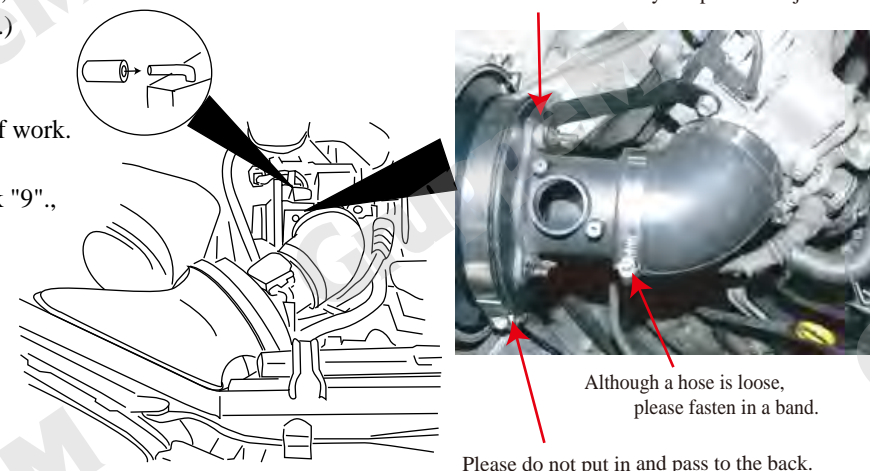
- 1: Install an air mass adapter in an adapter.  
Between a brace and an air mass adapter, four washers are pinched and are installed with Bolt B. A rectification fin is installed as shown in the right figure.
- 2: Insert M4 spacer into an air mass adapter, and install an air mass sensor with the attached bolt C.
- 3: Change a blow by hose for an attached hose.
- 4: Install the attached adapter in a throttle part with an attached elbow hose.  
A brace is simultaneously installed in a throttle body.
- 5: Attach a blow by hose to the pipe of an adapter.  
A cork is made the place which extracted the VSV hose with an attached rubber cap.
- 6: Install a cam cover as before.
- 7: Install Cleaner ASSY in an adapter and attach wiring of air mass meter.
- 8: Install an introductory duct in the original position.
- 9: Install a battery minus terminal, make an accelerator put an engine into operation, without putting a leg, and idle about 10 minutes from 5 minutes. (Computer study is done.)  
A computer learns and an idling

When stabilized, it is the completion of work.  
\* When an idling becomes unstable  
Please remove a battery once and work "9".

According to the individual specificity of vehicles, please fluctuate the number of washers and carry out position adjustment.



According to the individual specificity of vehicles, please fluctuate the number of washers and carry out position adjustment.



Although a hose is loose, please fasten in a band.  
Please do not put in and pass to the back.

Copyright GruppeM Inc.©