

INSTALLATION INSTRUCTIONS

Jeep-1802-01 Jeep TJ 8.8" Ford Axle Swap Kit

Ballistic Fabrication produces products for custom vehicles. Many products require general welding and fabrication skills. Welding should only be done by a competent welder. Ballistic Fabrication is not liable for improper installation. Check with local laws if your vehicle is driven on the street as some Ballistic Products may not be street legal in all states.

Dis-assembly of Ford 8.8" axle

- Cut Off existing leaf spring and shock mounts and remove all brake lines. A plasma cutter is preferred for removing the mounts, but a torch or angle grinder will get the job done.
- Grind the axle tubes smooth where the mounts were removed to ensure proper fitment of the axle swap kit.
- Clean axle housing to prepare for welding. Sand blasting is recommended, but the axle can be prepped with a grinder if necessary.

Assembly

- Set up axle on jack stands so it can be secured throughout the assembly process. There are critical angles that need to be set so ensure that the axle can not be moved once set up.
- Using a magnetic angle gauge, set the angle of the pinion flange to 14 degrees for a stock height Jeep, 16 degrees for 4" of lift, or 18 degrees for 6" of lift.



- Review the parts list in *Figure 1-1* and familiarize yourself with all of the components. The Component Reference number is marked on each part.

ITEM NO.	PART NUMBER	COMPONENT REFERENCE	QTY.
1	Coil Plate	1802-01L	2
2	Shock Mount	1802-01C	1
3	Lower Control Arm Mount	1802-01A	1
4	Sway Bar Mount	1802-01G	2
5	Coil Spring Perch Gusset 1	1802-01O	2
6	Coil Spring Perch Gusset 2	1802-01P	2
7	Lower Post Coil Spring Plate	1802-01K	2
8	8.8 Swap Rear Track Bar Bracket	1802-01J & 1802-01I	1
9	8.8 Swap Upper Control Arm Bracket	1802-01E	1
10	Spring Retainer	1802-01N	2
11	Spring Retainer Plate	1802-01M	2
12	Mirror8.8 Swap Upper Control Arm Bracket	1802-01F	1
13	MirrorShock Mount	1802-01D	1
14	MirrorLower Control Arm Mount	1802-01B	1

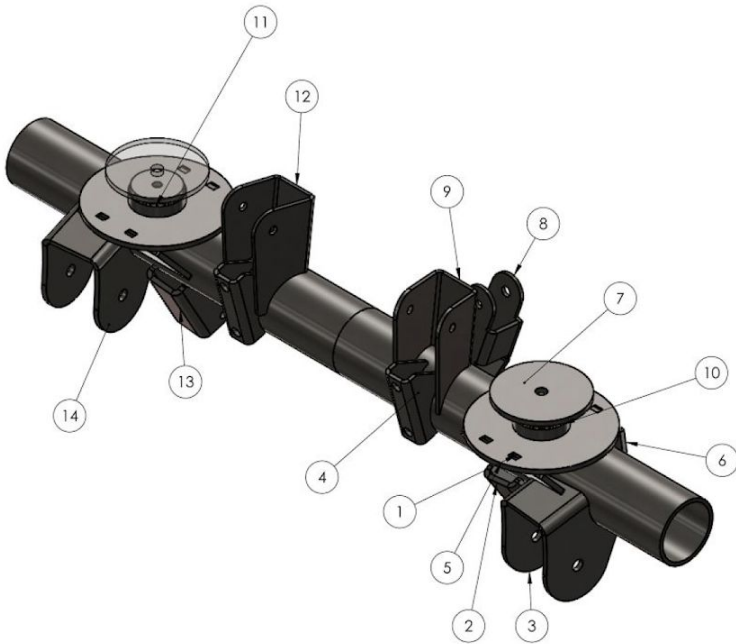


Figure 1-1 Parts List

- Refer to the dimensions in *Figure 1-2* throughout the installation

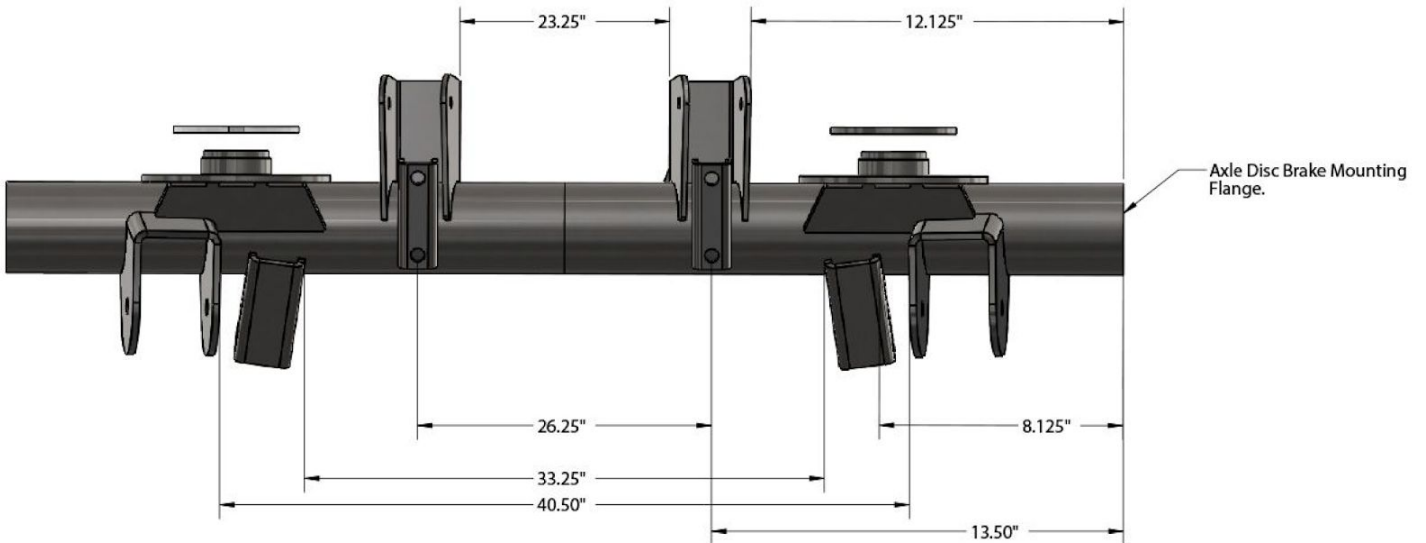


Figure 1-2 Dimensions

- Position the Coil Spring Perch Gusset 2 (Item No. 6, Component Reference 1802-01P) to the Coil Plate (1, 1802-01L) at 90 degrees with the tabs inserted into the slots, see *Figure 1-3*.

NOTE: final welding is to be done once all components are installed. The following steps will indicate to only tack the components in place.



Figure 1-3

- Position the Coil Plate on top of the axle tube so that the center of the perch is 7" from the brake mounting flange, see *Figure 1-4*.



Figure 1-4

- Using the magnetic angle gauge, set the Coil Plate angle to 90 degrees, see *Figure 1-5*. Double check that the pinion angle has not moved before proceeding.
- Tack the Coil Plate to the Axle Tube.



Figure 1-5

- Position the Spring Retainer (10, 1802-01N) in the center of the Coil Plate and tack in place.
- Position the Spring Retainer Top Plate (11, 1802-01M) on top of the Spring Retainer and tack in place. Ensure the welded nut is positioned down.
- Position Coil Spring Gusset 1 (5, 1802-01O) under the Coil Plate with tabs inserted into the slots, see *Figure 1-6*.
- Tack the Coil Spring Gusset 1 to both the Coil Plate and the axle tube.
- Position the Lower Control Arm Mount (3, 1802-01A) on the axle tube. It aligns to the notch in the Coil Spring Gusset 1 as shown in *Figure 1-6*.
- Position the Shock Mount (2, 1802-01C) 8.125" from the brake mounting flange, see *Figure 1-6*, at a 45 degree angle, see *Figure 1-7*. Double check that the pinion angle has not moved before proceeding.
- Tack Shock Mount in place.



Figure 1-6



Figure 1-7

- Position the Upper Control Arm Bracket (9, 1802-01E) on the axle tube 12.125" from the brake mounting flange and at a 90 degree angle, see *Figure 1-8*. Double check that the pinion angle has not moved before proceeding.
- Tack the Upper Control Arm Bracket in place.
- At this point, if you haven't been already, repeat the above steps on the other side of the axle.



Figure 1-8

- Position the Sway Bar Mount (4, 1802-01G) inside the Upper Control Arm Bracket and ensure that the spacing between the left and right sway bar mounts is 26.25”.
- Set Sway Bar Mount at an 85 degree angle and tack in place, see *Figure 1-9*.

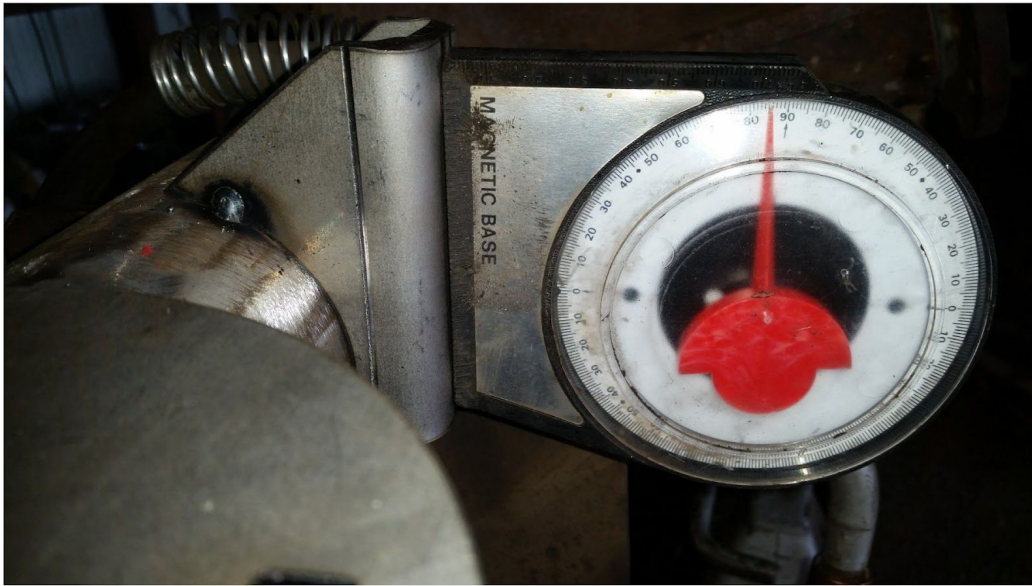


Figure 1-9

- Position the Track Bar Bracket (8, 1802-01J & L) on the back of the drivers' side Upper Control Arm with the mounting hole 13.625” from the brake mounting flange. The example shown in *Figure 1-10* is set up for 6” of lift. The mounting hole is approximately 7” above the top of the axle tube. For 3 or 4” of lift, the mounting hole will be 5 ½” above the top of the axle tube. For stock height Jeeps, position the hole 4” above the top of the axle tube.



Figure 1-10

- Finish Welding the entire assembly. Ensure to move around so not too much heat is applied to any area of the axle to prevent the axle from warping.
- Paint the axle assembled axle and install in the Jeep.