

## ***Enhance™ Collection***

Radiant™ integrates porcelain tiles with LED lighting to create a stunning and creative look. Emser Tile introduces a new patented system developed from t 3D extruded designs. Completely transform your space with this fun, innovative, up-tempo tile.

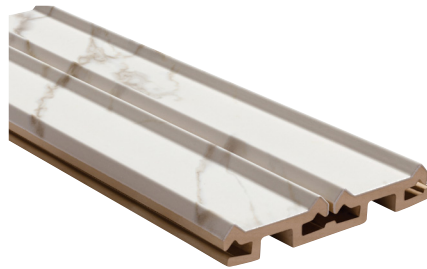
**RADIANT™**  
*Extruded Glazed Porcelain*



Enhance™



Pyramid White



Stries Calacata



Wave Black



Flexible LED strips are inserted into the channels of the porcelain tiles. Lights sold separately. Emser Tile suggests installation by a professional electrician.\*

Sizes	Profile View			Trim		
	6" x 16" (Wall) 6.10" x 15.75"	Pyramid White	Wave Black	Stries Calacata	Black Aluminum	White Aluminum
Thickness	26mm					
Grout Joint Recommendation	Check Website					
Testing	Breaking Strength C648	Chemical Resistance C650	Water Absorption C373	Scratch Hardness MOHS	Shade Variation Rating	<b>Sustainability Attributes</b> <ul style="list-style-type: none"> <li>• Health Product Declaration (HPD) provided upon request</li> <li>• Product Packaging is 100% recyclable</li> <li>• VOC Free</li> </ul>
Results*	Check Website	Check Website	Check Website	Check Website	V2	

\*For more information visit [www.emser.com](http://www.emser.com). Always consult a professional for proper usage and installation.

## **Enhance™ Collection**

Radiant™ integrates porcelain tiles with LED lighting to create a stunning and creative look. Emser Tile introduces a new patented system developed from 3D extruded designs. Completely transform your space with this fun, innovative, up-tempo tile.

# RADIANT™

*Extruded Glazed Porcelain*





Pearl



Gray



Moon



Sand



Beach



Oak



Dual application channels - Flexible LED strips can be inserted into the channels providing a seamless integration that not only adds a contemporary and visually appealing touch but also ensures efficient and energy-saving illumination. Lights sold separately. Installation by a professional electrician recommended.

The patented channel design also allows for efficient water evacuation by channeling it quickly, either to a secondary drainage system, such as gutters or drains, or directly to the substrate itself. These channels prevent accumulation of water and enhance safety.

Size	8" x 18" (Floor) 7.87" x 17.72"	8" x 35" (Floor) 7.87" x 35.43"	8" x 48" (Solid Floor) Stair Tread and Pool Coping	8" x 18" Angle Trim 7.87" x 17.72"	8" x 35" Angle Trim 7.87" x 35.43"	3" x 8" Triangular Trim 2.56" x 7.87"	
Thickness	26mm	26mm	Check Website	26mm	26mm	26mm	
Faces	Check Website	10	Check Website	10	10	10	
Finish	Matte, R11	Matte, R11	Matte, R11	Matte	Matte	Matte	
Edge	Rectified	Rectified	Check Website	Rectified	Rectified	Rectified	
Grout Joint Recommendation	Check Website	Check Website	Check Website	Check Website	Check Website	Check Website	
Testing	Abrasion Resistance C1027	Breaking Strength C648	Chemical Resistance C650	Water Absorption C373	DCOF ANSI A1371	Scratch Hardness MOHS	Shade Variation Rating
Results*	Check Website	Check Website	Check Website	Check Website	Check Website	Check Website	V2

**Sustainability Attributes**

- Red List Free
- Health Product Declaration (HPD) provided upon request
- Product Packaging is 100% recyclable

\*For more information visit [www.emser.com](http://www.emser.com). Always consult a professional for proper usage and installation.