



For Immediate Release

Contact: Olivia Kimmel
White Good
okimmel@whitegood.com
717-368-4883

Jennifer Brough
White Good
jbrough@whitegood.com
717-278-9338

Emser Tile Debuts New 2020/2021 Catalog
Color, Texture and Design Showcased within New Products

LOS ANGELES (September 15, 2020) – Emser Tile, a leading designer, marketer and producer of the world’s finest tile and natural stone, has introduced the brand’s newest product offerings in its 2020/2021 product catalog. The new Emser Tile product collection showcases new and emerging style directions for tile, including an extensive offering of glazed porcelain, ceramic tile, and stone, glass and mixed metal mosaic for late 2020 and early 2021.

“We have listened to our industry partners and leveraged our trend research in order to bring forth products our customers will be excited to see from Emser Tile,” said Mara Villanueva-Heras, Vice President of Marketing. “With this new collection, we are thrilled to offer updated versions of some of our customer favorites as well as new offerings that incorporate trend forward colors, textures and designs.”

See below for a sneak peak of new Emser Tile product and corresponding current style directions.

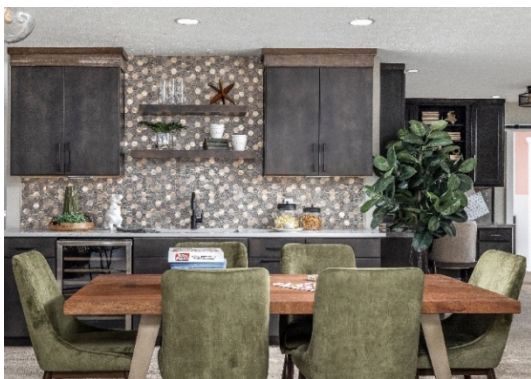
Striking Surfaces: Emser Tile has debuted luxurious and striking finishes that can be understated or bold depending on the design style. A combination of glazed porcelain, antique glass and metals creates a beautifully, distinctive look.



Impulse by Emser Tile



Marquesa by Emser Tile



Glitz by Emser Tile

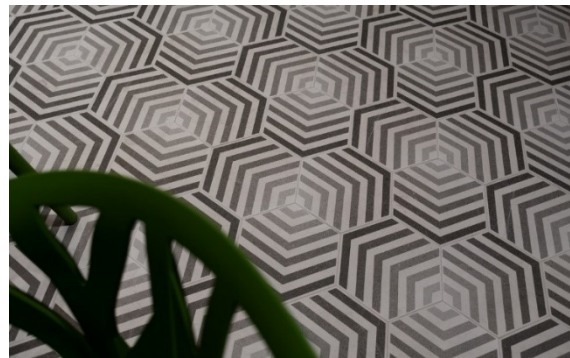
Mixed Geometrics: Welcoming an era of bold tile statements, new tile collections create awe-inspiring print combinations. Glazed ceramic and porcelain pieces can be laid in a multitude of ways, to create a unique look each time.



Bauhaus by Emser Tile



Influence by Emser Tile



Bauhaus Arrow by Emser Tile

Wood Look: With glazed porcelain, embrace the beauty of natural wood by showcasing traditional or trending wood tones, even in unexpected places like the kitchen or bath.



Denova by Emser Tile



Building Blocks Oak by Emser Tile (bar)

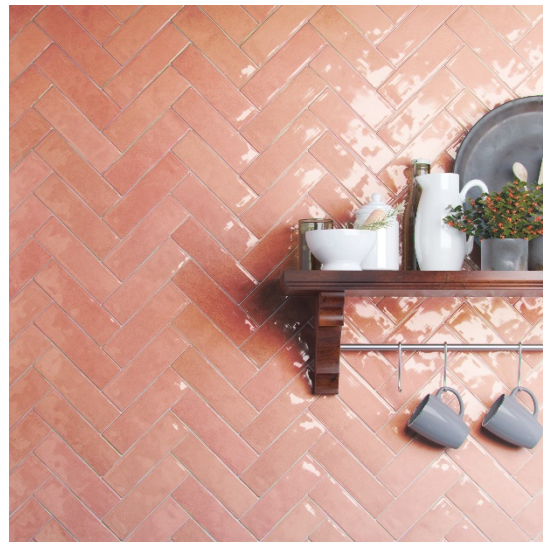


A Twist on Classic Subway

Tile is not just a backdrop, but it is now a focal point of the space. New Emser Tile subway designs promise bold color and interesting color variation to make a statement.



Raku by Emser Tile



Passion by Emser Tile



Sphere Mint & Ivory by Emser Tile

For more information on these new products and imagery, reach out to emser@whitegood.com. To view the new 2020/2021 click [here](#).

About Emser Tile LLC

Emser Tile is the largest privately held designer and marketer of tile and natural stone products in the United States. Our principle offering includes an extensive line of ceramic, porcelain, natural stone and decorative products to service the design and product needs of our customers. Our products are distributed nationally through a company-owned network of local sales and service locations. The company's products are used extensively in new home construction, remodel applications as well as commercial projects including multi-family housing, hospitality, shopping centers, office buildings and educational facilities. For more information, please visit www.emser.com and follow us on [Facebook](#), [Twitter](#), [Instagram](#) and [Pinterest](#).

###