

EMPERVIOUS™

RIGID WATERPROOF SHOWER SYSTEM

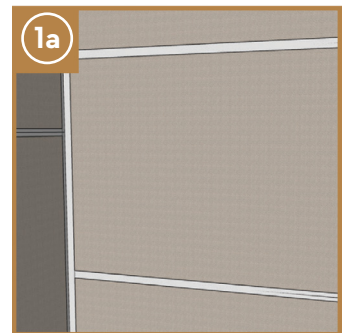
SHOWER NICHE INSTALLATION GUIDE

Installation Tools and Materials Required

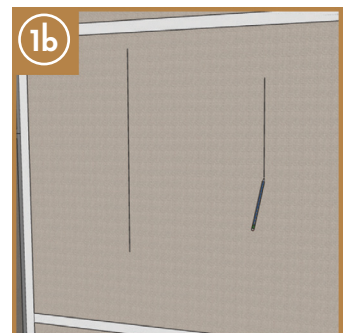
- Tape measure & fine point marker
- Level, straight edge, and utility knife
- Drill/Driver with a #2 Philips screwdriver bit
- Empervious Shower System joint sealant¹
- Empervious Sausage Gun or Caulk gun for joint sealant
- 2" Empervious Mesh Tape (included with Shower Pan or available separately)
- Putty Knife
- Cleaning supplies (recommended: paper towels, citrus wipes, rags, dust pan and brush)

Step 1

All wallboards should be completely installed prior to installation of your niche. [fig. 1a]

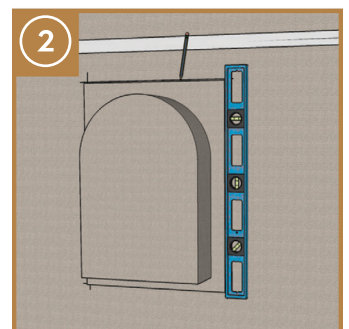


Locate studs on either side of the desired location of the niche. Niches are designed to be installed between 16" studs. Mark the location of the studs. [fig. 1b]



Step 2

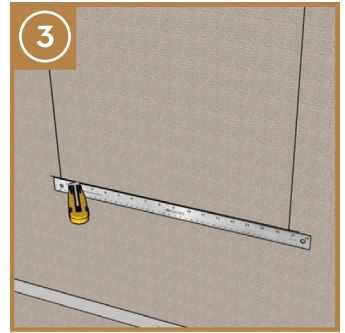
Place the niche edges on the marks for the stud centers and place a level on the edge of the niche to ensure proper positioning. Trace the outline of the niche. [fig. 2]



¹ Recommended sealant is SikaFlex 11FC. Failure to use recommended sealant will negate warranty

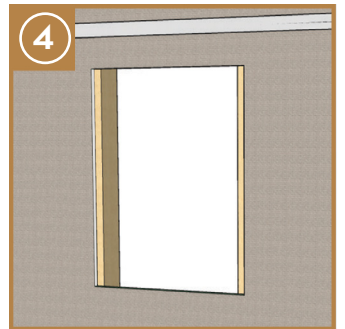
Step 3

Use a utility knife to cut the wallboard out completely. Horizontal lines should be cut first to ensure the vertical cuts will be over the middle of the stud. A level or steel ruler can be used as a straight edge to guide your knife while cutting. Remove the cut piece. [fig. 3]



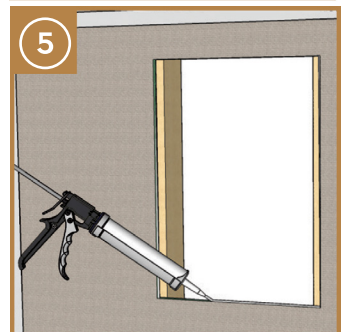
Step 4

Dry fit your niche in the cut area to ensure a good fit. Adjust if necessary. [fig. 4]



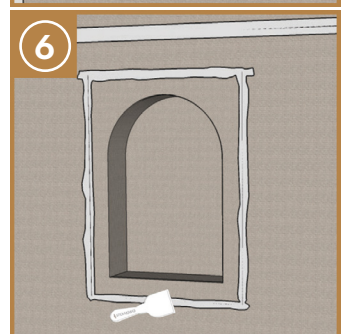
Step 5

Place a continuous solid bead of sealant on all exposed foam edges on the wallboard. [fig. 5]



Step 6

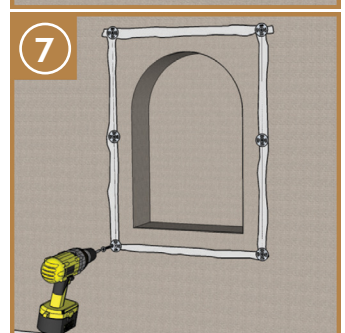
Install niche into the opening and smooth out excess sealant with the putty knife. [fig. 6]



Step 7

Install the Empervious screws and washers at each corner as well as the vertical seams every 12".

Place strips of 2" mesh tape over all seams and screws. [fig. 7]



Step 8

Apply a final 1/2" solid bead of sealant around the entire seam and smooth out with a putty knife ensuring all washers are completely covered. [fig. 8]

