

EMPERVIOUS™

RIGID WATERPROOF SHOWER SYSTEM

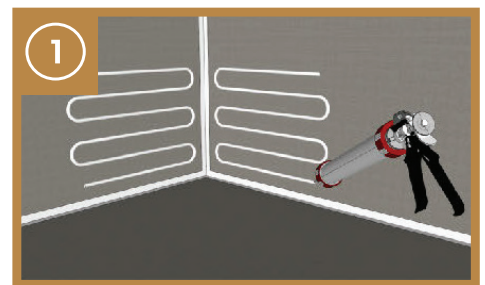
SHOWER BENCH KIT INSTALLATION GUIDE

Installation Tools and Materials Required

- Empervious Shower System joint sealant*
- Empervious Sausage Gun or Caulk gun for joint sealant
- Corner putty knives and standard putty knives
- Cleaning Wipes

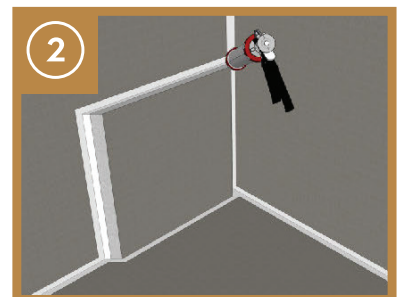
Step 1

Apply a 1/2" solid bead of joint sealant to the wall of corner that the bench is going to be installed. [fig. 1]



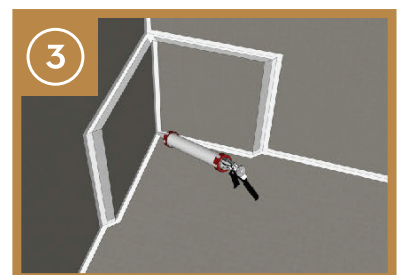
Step 2

Select one of the two shorter rectangular boards and press it into the wall with sealant, pushing it flush to the corner, making sure the cut angled edge faces away from the wall and corner. Apply a solid bead of joint sealant to seal all the edges to the wall board and pan. Use the corner putty knife to smooth the sealant. [fig. 2]



Step 3

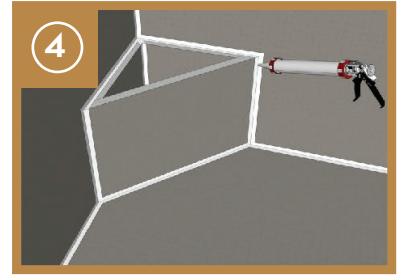
Repeat step two on the opposite wall of the corner with the second shorter rectangular board. Add a bead of sealant to the front angled edges (vertically) and spread evenly using the flat putty knife. [fig. 3]



*Recommended sealant is SikaFlex 11FC.
Failure to use recommended sealant will negate warranty

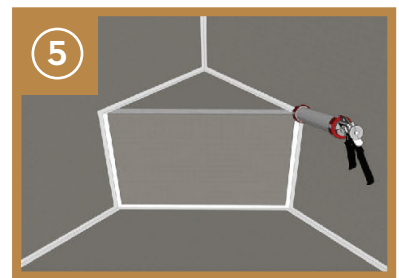
Step 4

Place the largest board piece along the front side to connect the two shorter pieces (angled cuts on the interior, forming a flat seal with the two shorter pieces) and apply solid bead of joint sealant to seal the edges. Use the corner putty knife to smooth the sealant. Mesh tape can be used along the bottom if desired but is not required. [fig. 4]



Step 5

Place the triangular piece on top and apply solid bead of joint sealant to seal the edges. Use the corner putty knife to smooth the sealant. [fig. 5]



*Recommended sealant is SikaFlex 11FC.
Failure to use recommended sealant will negate warranty