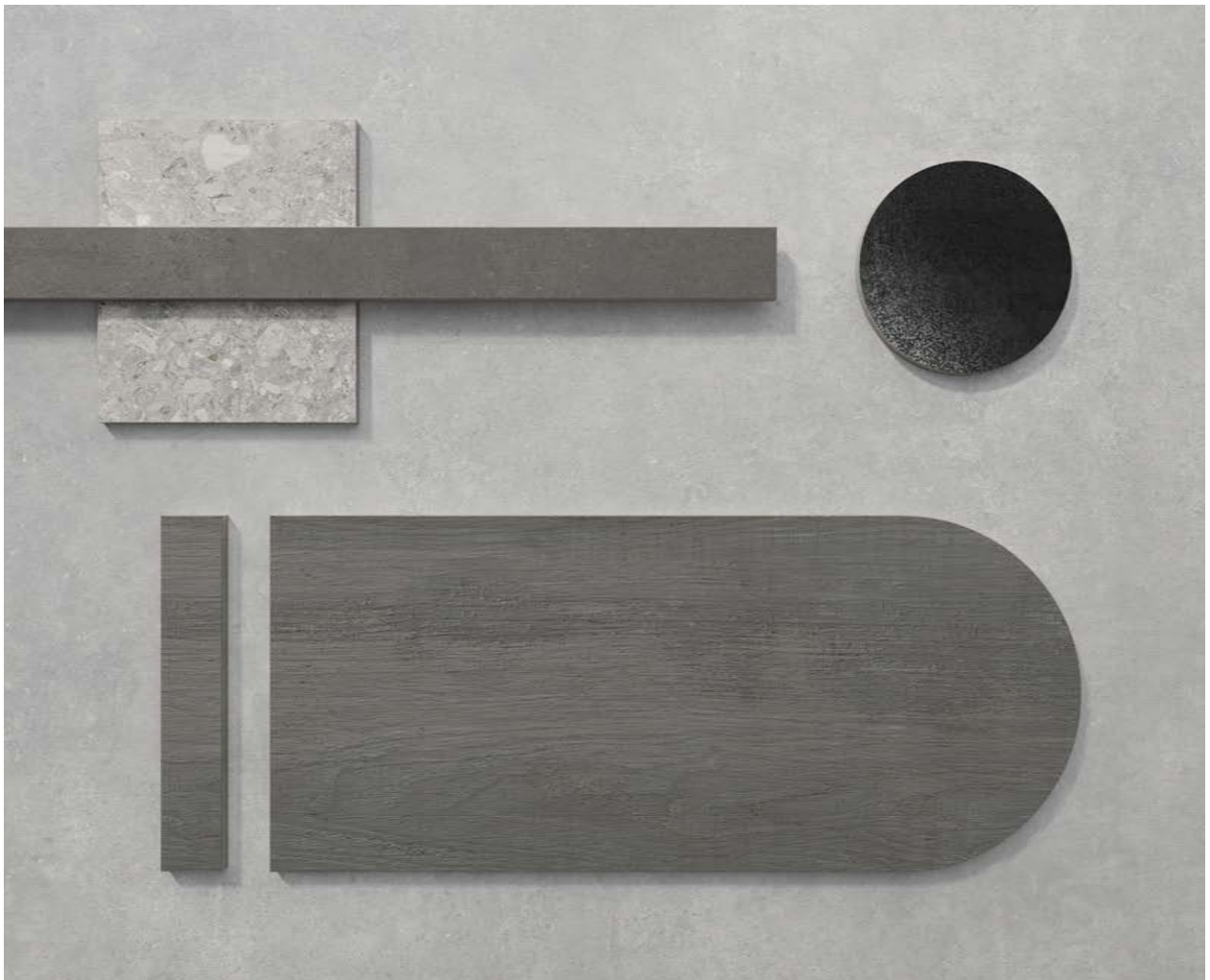


# FIXT





STONE Gray 24"x24"

# STONE

## PORCELAIN TILES

### Body Type

Body Match Porcelain

### Available Sizes

- 24" x 48"
- 32" x 32"
- 16" x 32"
- 24" x 24"
- 12" x 24"

### Decor Sizes

- 12" x 24" Linear Mosaic
- 2" x 2" Mosaic

### Basic Tile Colors

- White
- Gray
- Dark Gray
- Mink
- Dark Greige

### Usage Areas

- Residential
- Commercial

### Tiling Areas

- Floor
- Wall

### Frost Resistance

Available

### Shade Variation

V2

### Footnotes

- F** Suitable for both wall and floor.
- H** Each tile has different shades of color and slightly different designs to give real natural stone, marble, wood or cement impression.
- R** The edges are rectified.



Sizes	Thickness
32" x 32" Rectified	9
16" x 32" Rectified	9
24" x 48" Rectified	9
24" x 24" Rectified	9
12" x 24" Rectified	9
2" x 2" Mosaic	9

Stone Body Match Porcelain		Water Absorption C373	Breaking Strength C648	Bending Strength	Abrasion Resistance C1027	Scratch Hardness MOHS	DCOF	Shade Variation Rating
Series	Size	EN ISO 10545-3	EN ISO 10545-4	EN ISO 10545-4	EN ISO 10545-6	MOHs	ANSI A1371 Section 961	
Rectified	24" x 48"	Avg. Ev ≤ 0.5 %	> 250 LBF	Min. 35 N/mm <sup>2</sup>	max. 175 mm <sup>3</sup>	8-9	≥ 0.42	V2
Rectified	32" x 32"	Avg. Ev ≤ 0.5 %	> 250 LBF	Min. 35 N/mm <sup>2</sup>	max. 175 mm <sup>3</sup>	8-9	≥ 0.42	V2
Rectified	16" x 32"	Avg. Ev ≤ 0.5 %	> 250 LBF	Min. 35 N/mm <sup>2</sup>	max. 175 mm <sup>3</sup>	8-9	≥ 0.42	V2
Rectified	24" x 24"	Avg. Ev ≤ 0.5 %	> 250 LBF	Min. 35 N/mm <sup>2</sup>	max. 175 mm <sup>3</sup>	8-9	≥ 0.42	V2
Rectified	12" x 24"	Avg. Ev ≤ 0.5 %	> 250 LBF	Min. 35 N/mm <sup>2</sup>	max. 175 mm <sup>3</sup>	8-9	≥ 0.42	V2
Rectified	24" x 24"	Avg. Ev ≤ 0.5 %	> 750 LBF	Min. 35 N/mm <sup>2</sup>	max. 175 mm <sup>3</sup>	7-8	≥ 0.42	V2

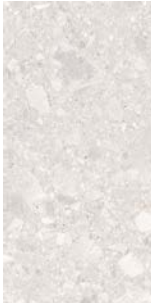
### Porcelain EmGuard Compatibility

	12" x 24"	24" x 24"	16" x 32"	32" x 32"
EmGuard	✓	✓	✓	✓
EmGuard +	✓	✓	✓	✓

# STONE



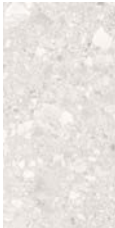
32"x32"  
White



16"x32"  
White



24"x24"  
White



12"x24"  
White



24"x48"  
White



12"x24"  
Linear Mosaic  
White



2"x2"  
Mosaic  
White



32"x32"  
Gray



16"x32"  
Gray



24"x24"  
Gray



12"x24"  
Gray



24"x48"  
Gray



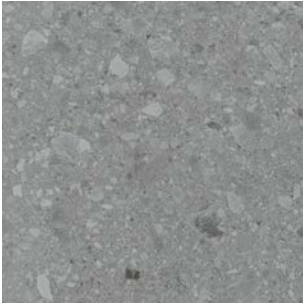
12"x24"  
Linear Mosaic  
Gray



2"x2"  
Mosaic  
Gray



# STONE



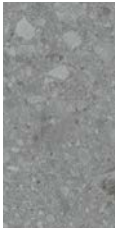
32"x32"  
Dark Gray



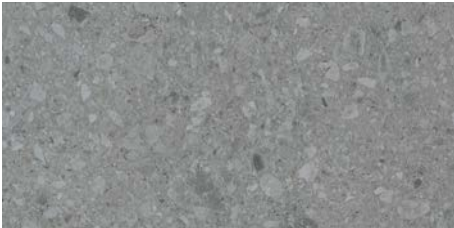
16"x32"  
Dark Gray



24"x24"  
Dark Gray



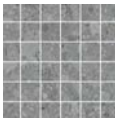
12"x24"  
Dark Gray



24"x48"  
Dark Gray



12"x24"  
Linear Mosaic  
Dark Gray



2"x2"  
Mosaic  
Dark Gray



32"x32"  
Mink



16"x32"  
Mink



24"x24"  
Mink



12"x24"  
Mink



24"x48"  
Mink



12"x24"  
Linear Mosaic  
Mink



2"x2"  
Mosaic  
Mink

# STONE



32"x32"  
Dark Greige



16"x32"  
Dark Greige



24"x24"  
Dark Greige



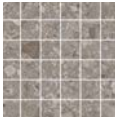
12"x24"  
Dark Greige



24"x48"  
Dark Greige



12"x24"  
Linear Mosaic  
Dark Greige



2"x2"  
Mosaic  
Dark Greige





STONE Gray 24"x48"  
WOOD Gray 8"x48"



CEMENT Mink 24"×24"  
WOOD Mink 8"×48"

# CEMENT

## PORCELAIN TILES

### Body Type

Body Match Porcelain

### Available Sizes

- 24"x48"
- 32"x32"
- 16"x32"
- 24"x24"
- 12"x24"

### Decor Sizes

- 12"x24" Brick Mosaic
- 2"x2" Mosaic

### Basic Tile Colors

- White
- Gray
- Dark Gray
- Mink
- Dark Greige

### Usage Areas

- Residential
- Commercial

### Tiling Areas

- Floor
- Wall

### Frost Resistance

Available

### Shade Variation

V2

### Footnotes

- F** Suitable for both wall and floor.
- H** Each tile has different shades of color and slightly different designs to give real natural stone, marble, wood or cement impression.
- R** The edges are rectified.



Sizes	Thickness
32"x32" Rectified	9
16"x32" Rectified	9
24"x48" Rectified	9
24"x24" Rectified	9
12"x24" Rectified	9
2"x2" Mosaic	9

Cement Body Match Porcelain		Water Absorption C373	Breaking Strength C648	Bending Strength	Abrasion Resistance Cio27	Scratch Hardness MOHS	DCOF	Shade Variation Rating
Series	Size	EN ISO 10545-3	EN ISO 10545-4	EN ISO 10545-4	EN ISO 10545-6	MOHS	ANSI A1371 Section 9.61	
Rectified	24"x48"	Avg. Ev ≤ 0.5 %	> 250 LBF	Min. 35 N/mm <sup>2</sup>	max. 175 mm <sup>3</sup>	8-9	≥ 0.42	V2
Rectified	32"x32"	Avg. Ev ≤ 0.5 %	> 250 LBF	Min. 35 N/mm <sup>2</sup>	max. 175 mm <sup>3</sup>	8-9	≥ 0.42	V2
Rectified	32"x32"	Avg. Ev ≤ 0.5 %	> 250 LBF	Min. 35 N/mm <sup>2</sup>	max. 175 mm <sup>3</sup>	7-8	≥ 0.42	V2
Rectified	16"x32"	Avg. Ev ≤ 0.5 %	> 250 LBF	Min. 35 N/mm <sup>2</sup>	max. 175 mm <sup>3</sup>	8-9	≥ 0.42	V2
Rectified	16"x32"	Avg. Ev ≤ 0.5 %	> 250 LBF	Min. 35 N/mm <sup>2</sup>	max. 175 mm <sup>3</sup>	7-8	≥ 0.42	V2
Rectified	24"x24"	Avg. Ev ≤ 0.5 %	> 250 LBF	Min. 35 N/mm <sup>2</sup>	max. 175 mm <sup>3</sup>	8-9	≥ 0.42	V2
Rectified	24"x24"	Avg. Ev ≤ 0.5 %	> 250 LBF	Min. 35 N/mm <sup>2</sup>	max. 175 mm <sup>3</sup>	7-8	≥ 0.42	V2
Rectified	12"x24"	Avg. Ev ≤ 0.5 %	> 250 LBF	Min. 35 N/mm <sup>2</sup>	max. 175 mm <sup>3</sup>	8-9	≥ 0.42	V2
Rectified	12"x24"	Avg. Ev ≤ 0.5 %	> 250 LBF	Min. 35 N/mm <sup>2</sup>	max. 175 mm <sup>3</sup>	7-8	≥ 0.42	V2

### Porcelain EmGuard Compatibility

	12"x24"	24"x24"	16"x32"	32"x32"
EmGuard	✓	✓	✓	✓
EmGuard +	✓	✓	✓	✓

# CEMENT



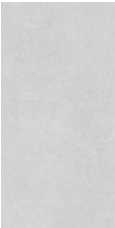
32"x32"  
White



16"x32"  
White



24"x24"  
White



12"x24"  
White



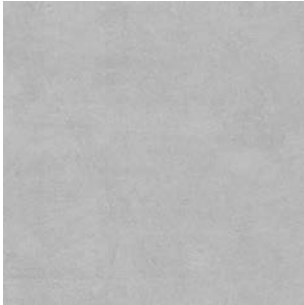
24"x48"  
White



12"x24"  
Brick Mosaic  
White



2"x2"  
Mosaic  
White



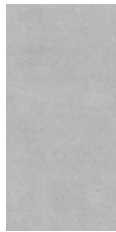
32"x32"  
Gray



16"x32"  
Gray



24"x24"  
Gray



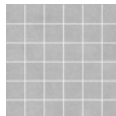
12"x24"  
Gray



24"x48"  
Gray



12"x24"  
Brick Mosaic  
Gray



2"x2"  
Mosaic  
Gray



# CEMENT



32"x32"  
Dark Gray



16"x32"  
Dark Gray



24"x24"  
Dark Gray



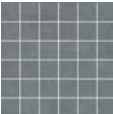
12"x24"  
Dark Gray



24"x48"  
Dark Gray

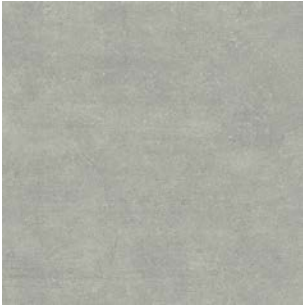


12"x24"  
Brick Mosaic  
Dark Gray



2"x2"  
Mosaic  
Dark Gray





32"x32"  
Mink



16"x32"  
Mink



24"x24"  
Mink



12"x24"  
Mink



24"x48"  
Mink



12"x24"  
Brick Mosaic  
Mink



2"x2"  
Mosaic  
Mink

# CEMENT



32"x32"  
Dark Greige



16"x32"  
Dark Greige



24"x24"  
Dark Greige



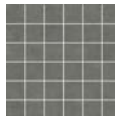
12"x24"  
Dark Greige



24"x48"  
Dark Greige



12"x24"  
Brick Mosaic  
Dark Greige



2"x2"  
Mosaic  
Dark Greige



CEMENT Mink 24"x48"





WOOD Mink 8"x48"  
CEMENT Mink 24"x24"

# WOOD

## PORCELAIN TILES

### Body Type

Glazed porcelain

### Available Sizes

8"x48"

### Decor Sizes

1.5"x8" Chevron Mosaic

### Basic Tile Colors

White  
Gray  
Dark Gray  
Mink  
Dark Greige  
Natural Oak  
Dark Oak

### Usage Areas

Residential  
Commercial

### Tiling Areas

Floor  
Wall

### Frost Resistance

Available

### Shade Variation

V2

### Footnotes

- F** Suitable for both wall and floor.
- H** Each tile has different shades of color and slightly different designs to give real natural stone, marble, wood or cement impression.
- R** The edges are rectified.

FLOOR / WALL 

INDOOR 

OUTDOOR 

RESIDENTIAL 



Wood Glazed porcelain		Water Absorption C373	Breaking Strength C648	Bending Strength	Abrasion Resistance C1027	Scratch Hardness MOHS	DCOF	Shade Variation Rating
Series	Size	EN ISO 10545:3	EN ISO 10545:4	EN ISO 10545:4	EN ISO 10545:6	MOHS	ANSI A1371 Section 9.61	
Rectified	8"x48"	Avg. Ev ≤ 0.5 %	> 250 LBF	Min. 35 N/mm <sup>2</sup>	max. 175 mm <sup>3</sup>	8-9	≥ 0.42	V2
Rectified	8"x48"	Avg. Ev ≤ 0.5 %	> 250 LBF	Min. 35 N/mm <sup>2</sup>	max. 175 mm <sup>3</sup>	8-9	≥ 0.42	V2

Porcelain EmGuard Compatibility

8"x48"

EmGuard + 

# WOOD



8"x48"  
White



8"x48"  
Gray



8"x48"  
Dark Gray



1,5"x8"  
Chevron Decor  
White



1,5"x8"  
Chevron Mosaic  
Gray



1,5"x8"  
Chevron Mosaic  
Dark Gray





8"x48"  
Mink



8"x48"  
Dark Greige



8"x48"  
Natural Oak



8"x48"  
Dark Oak



1,5"x8"  
Chevron Mosaic  
Mink



1,5"x8"  
Chevron Mosaic  
Dark Greige



1,5"x8"  
Chevron Mosaic  
Natural Oak



1,5"x8"  
Chevron Mosaic  
Dark Oak



METAL Iron 16" x 32"  
STONE Gray 24" x 24"

# METAL

## PORCELAIN TILES

### Body Type

Body Match Porcelain

### Surface alternatives

Lappato

### Available Sizes

32" x 32"  
16" x 32"  
24" x 24"  
12" x 24"

### Decor Sizes

12" x 24" Brick Mosaic  
2" x 2" Mosaic

### Basic Tile Colors

Mink  
Copper  
Silver Gray  
Iron

### Usage Areas

Residential  
Commercial

### Tiling Areas

Floor  
Wall

### Frost Resistance

Available

### Shade Variation

V2

### Footnotes

- F** Suitable for both wall and floor.
- H** Each tile has different shades of color and slightly different designs to give real natural stone, marble, wood or cement impression.
- R** The edges are rectified.

FLOOR / WALL



INDOOR



OUTDOOR



RESIDENTIAL



COMMERCIAL



Sizes	Thickness
32" x 32" Rectified	9
16" x 32" Rectified	9
24" x 24" Rectified	9
12" x 24" Rectified	9
2" x 2" Mosaic	9

Metal Body Match Porcelain		Water Absorption C373	Breaking Strength C648	Bending Strength	Abrasion Resistance C1027	Scratch Hardness MOHS	DCOF	Shade Variation Rating
Series	Size	EN ISO 10545-3	EN ISO 10545-4	EN ISO 10545-4	EN ISO 10545-6	MOHs	ANSI A1371 Section 9.6.1	
Rectified	32" x 32"	Avg. Ev < 0.5 %	> 250 LBF	Min. 35 N/mm <sup>2</sup>	max. 175 mm <sup>2</sup>	7-8	≥ 0.42	V2
Rectified	16" x 32"	Avg. Ev < 0.5 %	> 250 LBF	Min. 35 N/mm <sup>2</sup>	max. 175 mm <sup>2</sup>	7-8	≥ 0.42	V2
Rectified	24" x 24"	Avg. Ev < 0.5 %	> 250 LBF	Min. 35 N/mm <sup>2</sup>	max. 175 mm <sup>2</sup>	7-8	≥ 0.42	V2
Rectified	12" x 24"	Avg. Ev < 0.5 %	> 250 LBF	Min. 35 N/mm <sup>2</sup>	max. 175 mm <sup>2</sup>	7-8	≥ 0.42	V2

# METAL



32"x32"  
Silver Gray



16"x32"  
Silver Gray



32"x32"  
Iron



16"x32"  
Iron



24"x24"  
Silver Gray



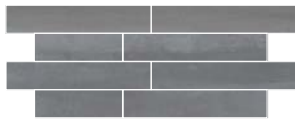
12"x24"  
Silver Gray



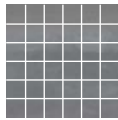
24"x24"  
Iron



12"x24"  
Iron



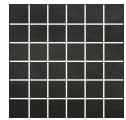
12"x24"  
Brick Mosaic  
Silver Gray



2"x2"  
Mosaic  
Silver Gray



12"x24"  
Brick Mosaic  
Iron



2"x2"  
Mosaic  
Iron





METAL Iron 32"x32"

# METAL



32"x32"  
Mink



16"x32"  
Mink



32"x32"  
Copper



16"x32"  
Copper



24"x24"  
Mink



12"x24"  
Mink



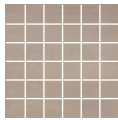
24"x24"  
Copper



12"x24"  
Copper



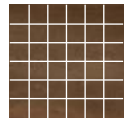
12"x24"  
Brick Mosaic  
Mink



2"x2"  
Mosaic  
Mink

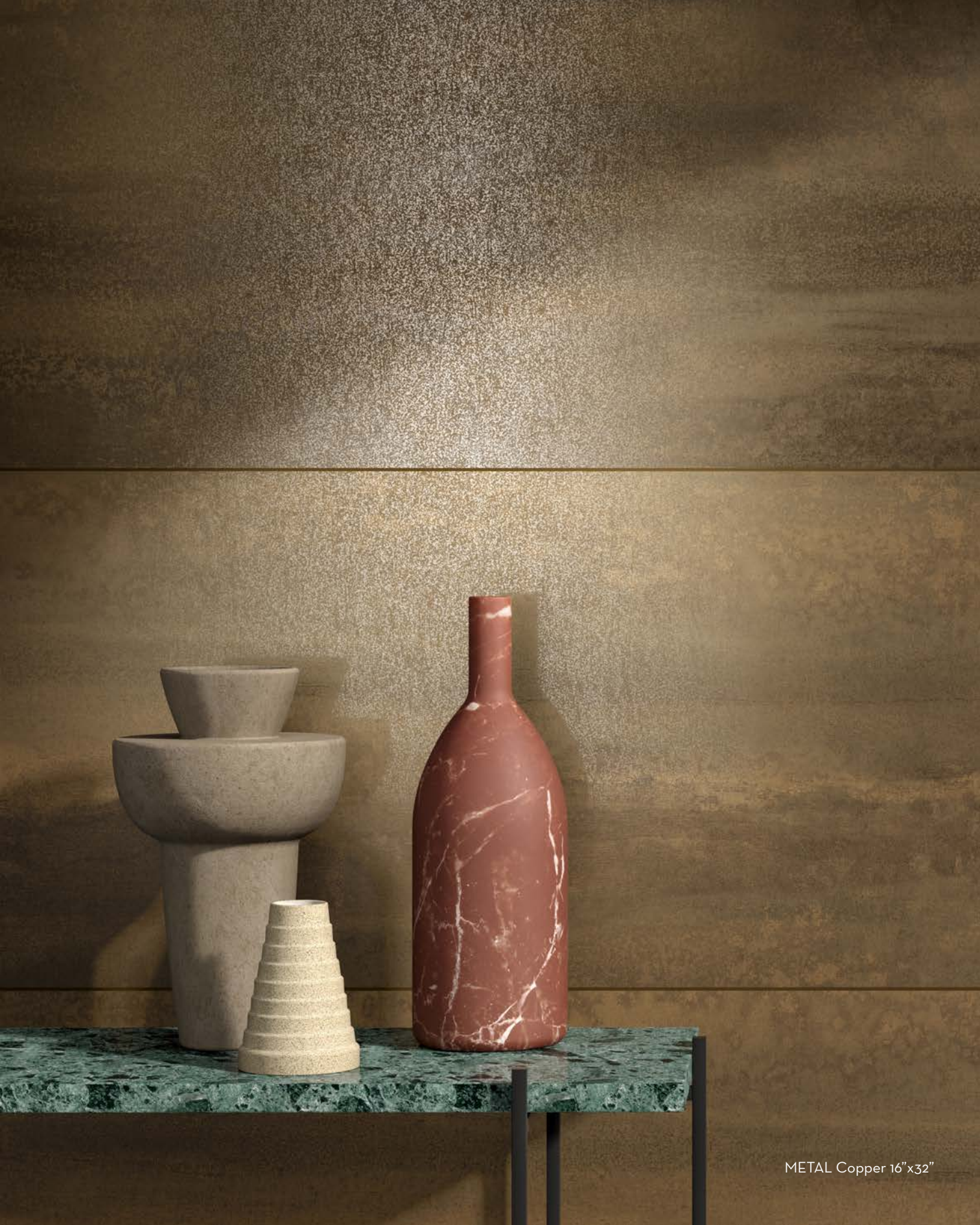


12"x24"  
Brick Mosaic  
Copper



2"x2"  
Mosaic  
Copper





METAL Copper 16"x32"





A modern interior space featuring a large window on the left side, offering a view of greenery. In the center, a tall, thin floor lamp with a white, oval-shaped shade stands on a dark base. To the left, a light-colored, cushioned bench is visible. In the foreground, a dark wooden bench with a blue blanket draped over it is positioned. A stack of four books lies on the floor in the lower right. The walls are composed of large, grey, textured panels, and the floor is made of dark, wood-grain tiles.

# HYGIENE TECHNOLOGIES AVAILABLE



# EmGuard

## WHAT IS EMGUARD TECHNOLOGY?

**EmGuard** is an application of nano titanium dioxide ( $\text{TiO}_2$ ) coating that is available for any of the products featured in this brochure with the exception of Metal and Wood, upon request. **EmGuard** technology applied tiles are self-cleaning thanks to the photocatalytic features activated by light and humidity in the air, inhibit the growth of harmful bacteria and eliminate impact of airborne unpleasant odors and dirt in the air in spaces where **EmGuard** applied tiles are used.

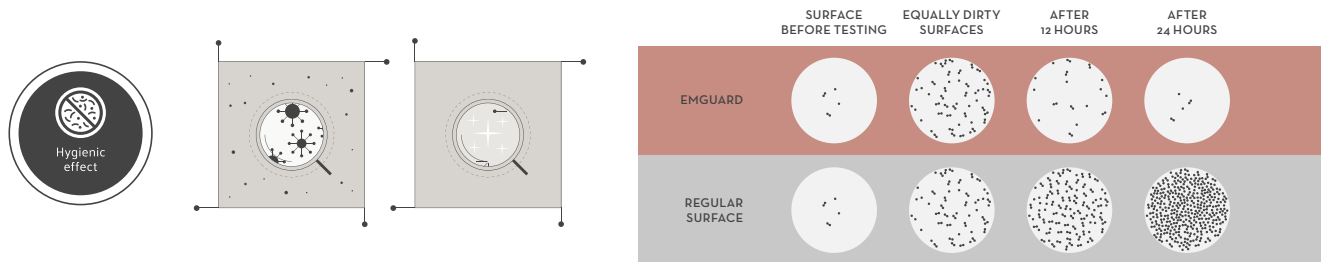
Thanks to all of these powerful features, **EmGuard** offers a clean, healthy and safe solution for homes, schools, hospitals, sports centers, clinics, child care centers and any living space where hygiene is important.



## TECHNOLOGY THAT INHIBITS THE GROWTH OF HARMFUL BACTERIA

**EmGuard** applied tiles, that are produced with nano technology, inhibit the growth of harmful bacteria, providing **long lasting and continuous hygiene in living spaces.**

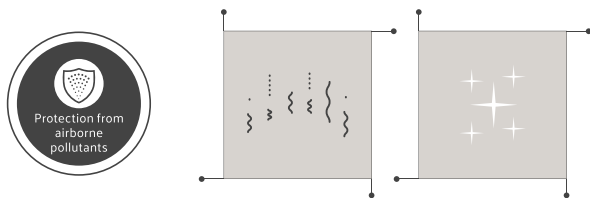
Tests performed in national and international accredited laboratories show that **EmGuard provides 99.9% effective hygienic protection.**



## TECHNOLOGY THAT REDUCES UNPLEASANT ODORS AND DIRT IN THE AIR

Due to its strong photocatalytic effect, **EmGuard** reduces unpleasant odors and the negative effects of airborne dirt such as nitrogen oxide, sulphur-oxide, exhaust fumes and cigarette smoke. Thus, **it provides clean and fresh air.**

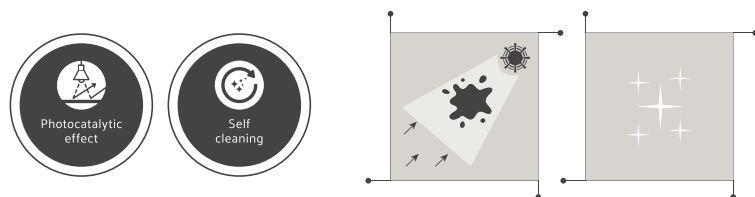
It is also an excellent solution to lessen the effect of strong odors such as disinfectants.



## SELF-CLEANING TECHNOLOGY

**EmGuard** technology decomposes and removes the organic dirt on the tile's surface when it gets in contact with its photocatalytic effect surface. It easily removes dust and other dirt particles from the surface through the help of rain outdoors and water indoors.

Thus, it significantly **reduces the effort, the amount of water, energy, chemical cleaning and labor** required for cleaning indoor and outdoor surfaces.



### Porcelain EmGuard Compatibility

EmGuard	12"x24"	24"x24"	16"x32"	32"x32"	8"x48"	24"x48"
Stone	✓	✓	✓	✓		
Cement	✓	✓	✓	✓		
Wood						
Metal						



# EmGuard +

## WHAT IS EMGUARD + TECHNOLOGY?

EmGuard + technology is a smart surface technology that **reduces the effect of human coronaviruses and bacteria both on floor and wall tiles by 99.99%**, through a special technique applied to the tile surfaces during the production phase.

\* EmGuard + technology is effective against human coronaviruses (Human Coronavirus 229E and OC43) and bacteria (E. coli and S. aureus) These tests have been conducted at **TCNA - North American Ceramic Council laboratories.**



## HYGIENE IN LIVING SPACES

EmGuard + technology provides **hygienic** protection on both wall and floor tiles



## SAFETY IN ALL LIVING SPACES

Thanks to EmGuard +, you will feel the **comfort of hygiene and safety** in **domestic areas** such as bathrooms, kitchens, living rooms, halls, and terraces; and in **public areas** such as schools, hospitals, restaurants, hotels, shopping malls, gyms and SPAs.



## ENVIRONMENTALLY FRIENDLY AND RELIABLE TECHNOLOGY

EmGuard + technology is **environmentally friendly**. Since it provides easy-to-clean surfaces, it **reduces the effort, amount of water, energy, chemical cleaning and labor** required for cleaning indoor and outdoor surfaces.



### Porcelain EmGuard + Compatibility

EmGuard +	12"x24"	24"x24"	16"x32"	32"x32"	8"x48"	24"x48"
Stone	✓	✓	✓	✓		
Cement	✓	✓	✓	✓		
Wood					✓	
Metal						

# NOTES

A series of horizontal dashed lines for writing notes.

A series of horizontal dashed lines spanning the width of the page, intended for writing or drawing.

