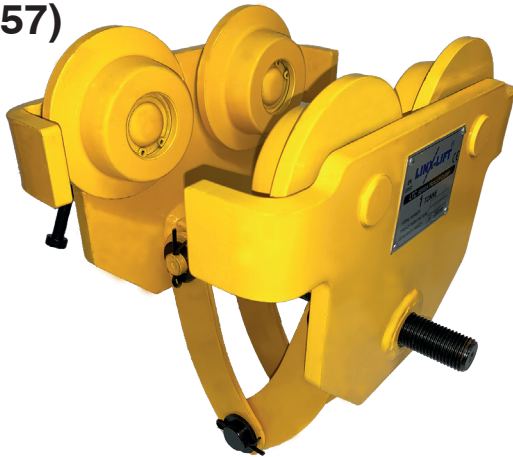


USER MANUAL

LTC SERIES TROLLEY CLAMP

(BS EN 13157)



WARNING!

This equipment should not be installed, operated or maintained by any person who has not read and understood all the contents of this manual. Failure to read and comply with the contents of this manual may result in serious bodily injury or death and/or damage to property.

1. GENERAL

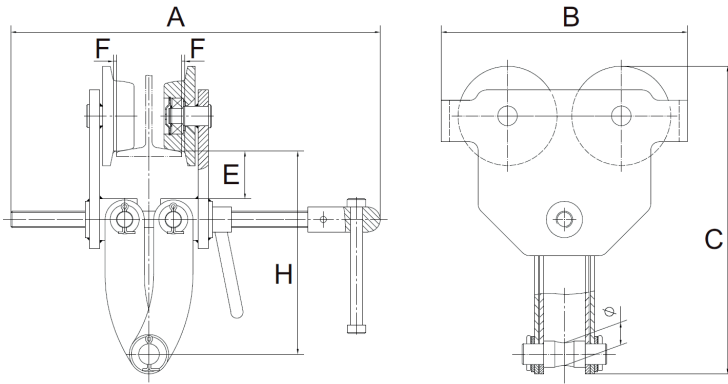
This user manual provides important information for all personnel involved with the safe installation, operation and proper maintenance of this product.

When using any trolley there are different kinds of risks that you may encounter which could result in personal injury or damage to property. It is therefore imperative that anyone involved in the installation, maintenance or operation of the trolley is familiar with the contents of this user manual and follows the guidance set out in it.

2. SAFE OPERATION INSTRUCTIONS

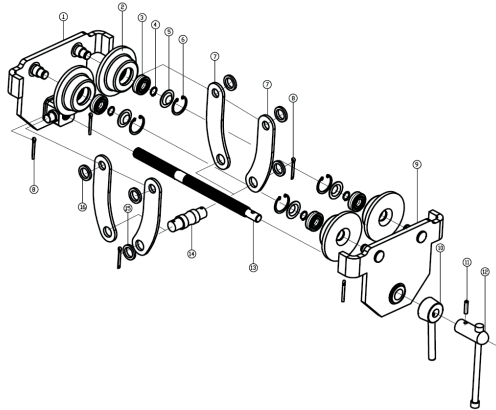
1. The trolley should be inspected for wear or damage prior to assembly and installation.
2. NEVER use a trolley that is found to be defective in any way.
3. Only ever attach a hoist with a rated capacity equal to or less than the capacity of the trolley.
4. Only operate a trolley when the load is centred under it. Do not pull the trolley sideways.
5. Ensure that the load path is clear prior to moving the trolley. Never lift a load over people!
6. Avoid collision or bumping of the trolley.
7. Ensure that stops are securely installed at both ends of the beam prior to operation of the trolley.
8. Do not swing a suspended load.
9. Do not modify the trolley in any way.

3. TECHNICAL SPECIFICATION



Model	LTC-1T	LTC-2T	LTC-3T	LTC-5T	LTC-10T	
Capacity (t)	1	2	3	5	10	
Proof load (t)	1.25	2.5	3.75	6.25	12.5	
Beam flange width (mm)	64-203	76-203	76-203	100-305	150-305	
Dimensions (mm)	A	355	360	360	470	480
	B	242	281	328	377	455
	C	297	318	351	455	500
	E	46	55	62	71	71
	F	≈3	≈3	≈3	≈4.5	≈4.5
	Ø	22	22	24	28	42
	H	196	200	210	285	286
Weight (kg)	14.7	29.4	44.1	61.3	122.6	

4. EXPLODED VIEW DRAWING



1	Right side plate	5	Bearing ring	9	Left side plate	13	Axle
2	Wheel	6	Circlip	10	Lock nut	14	Hanging pin
3	Bearing	7	Side plate	11	Cylindrical pin	15	Small spacing washer
4	Axle ring	8	Cotter pin	12	Handle assembly	16	Spacing washer

5. INSTALLATION

1. Measure the width of the beam flange.
2. Turn the threaded load bar to adjust the width of the trolley accordingly.
3. Ensure that a side clearance of between 3-5mm is maintained between the wheel flange and runway beam.

6. MAINTENANCE

1. Check the function of the trolley prior to use.
2. In the event that any defective parts are found, remove the trolley from service immediately.
3. Defective parts should be replaced with genuine items only.
4. See the table below for standard periodic maintenance:

Items	Method	Rejection Criteria	Remedy
Plates	Check visually	Check the plates for wear and tear, cracks or deformation	Replace
Axle	Check visually	Check the axle for wear and tear, cracks or deformation	Replace
Wheels	Check visually	Check the wheels for wear and tear, cracks or deformation	Replace

