



January 2021

USER MANUAL

LGT SERIES GEARED TRAVEL TROLLEY

(BS EN 13157)



WARNING!

This equipment should not be installed, operated or maintained by any person who has not read and understood all the contents of this manual. Failure to read and comply with the contents of this manual may result in serious bodily injury or death and/or damage to property.

1. GENERAL

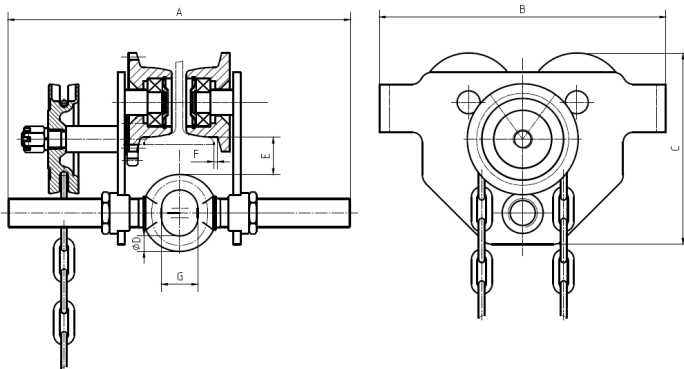
This user manual provides important information for all personnel involved with the safe installation, operation and proper maintenance of this product.

When using any trolley there are different kinds of risks that you may encounter which could result in personal injury or damage to property. It is therefore imperative that anyone involved in the installation, maintenance or operation of the trolley is familiar with the contents of this user manual and follows the guidance set out in it.

2. SAFE OPERATION INSTRUCTIONS

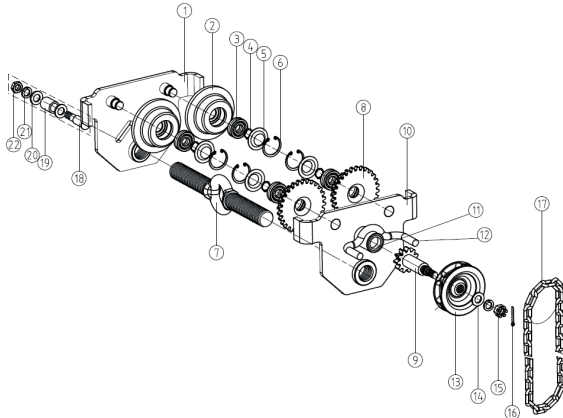
1. The trolley should be inspected for wear or damage prior to assembly and installation.
2. NEVER use a trolley that is found to be defective in any way.
3. Only ever attach a hoist with a rated capacity equal to or less than the capacity of the trolley.
4. Only operate a trolley when the load is centred under it. Do not pull the trolley sideways.
5. Ensure that the load path is clear prior to moving the trolley. Never lift a load over people!
6. Avoid collision or bumping of the trolley.
7. Ensure that stops are securely installed at both ends of the beam prior to operation of the trolley.
8. Do not swing a suspended load.
9. Do not modify the trolley in any way.

3. TECHNICAL SPECIFICATION



Model	LGT-0.5T	LGT-1T	LGT-2T	LGT-3T	LGT-5T	
Capacity (t)	0.5	1	2	3	5	
Proof load (t)	0.625	1.25	2.5	3.75	6.25	
Beam flange width (mm)	55-220	58-220	66-220	74-220	90-220	
Dimensions (mm)	A	352.5	353.5	362	406.5	434.5
	B	198	238	277	324	373
	C	158	183	208	249	296.5
	D	12.5	17	20	26	28
	E	40	31	31	31	40
	F	≈3	≈3	≈3	≈3	≈5
	G	25	29	36	46	52
Min. radius for curve (m)	0.5	0.7	0.9	1.2	1	
Weight - 3m hand chain (kg)	8.5	12.5	17	28	45	

4. EXPLODED VIEW DRAWING



1	Wheel side plate	6	Circlip	11	Copper bush	16	Split pin	21	Spring washer
2	Wheel	7	Load bar (axle)	12	Guide pin	17	Chain	22	Hex nut
3	Bearing	8	Toothed gear	13	Chain wheel	18	Anti tilt spindle		
4	Axle ring	9	Drive spindle	14	Spacing washer	19	Spindle bush		
5	Bearing ring	10	Gear plate	15	Hex castle nut	20	Spacing washer		

5. INSTALLATION

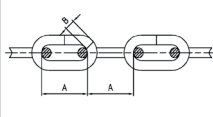
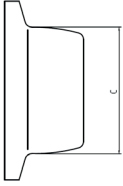
1. Measure the width of the beam flange.
2. Turn the threaded load bar to adjust the width of the trolley accordingly.
3. Ensure that a side clearance of between 3-5mm is maintained between the wheel flange and runway beam.

6. MAINTENANCE

1. Check the function of the trolley prior to use.
2. In the event that any defective parts are found, remove the trolley from service immediately.
3. Defective parts should be replaced with genuine items only.
4. See the table below for standard periodic maintenance:

Items	Method	Rejection Criteria	Remedy													
Plates	Check visually	Check the plates for wear and tear, cracks or deformation	Replace													
Axle	Measure	<table border="1"> <thead> <tr> <th rowspan="2">Capacity</th> <th>D (mm)</th> </tr> <tr> <th>Discard</th> </tr> </thead> <tbody> <tr> <td>0.5t</td> <td>≤ 11</td> </tr> <tr> <td>1t</td> <td>≤ 15</td> </tr> <tr> <td>2t</td> <td>≤ 18</td> </tr> <tr> <td>3t</td> <td>≤ 23</td> </tr> <tr> <td>5t</td> <td>≤ 25</td> </tr> </tbody> </table>	Capacity	D (mm)	Discard	0.5t	≤ 11	1t	≤ 15	2t	≤ 18	3t	≤ 23	5t	≤ 25	Replace
	Capacity	D (mm)														
		Discard														
0.5t	≤ 11															
1t	≤ 15															
2t	≤ 18															
3t	≤ 23															
5t	≤ 25															
	Check visually	Check the axle for wear and tear, cracks or deformation	Replace													

6. MAINTENANCE (continued...)

Items	Method	Rejection Criteria	Remedy													
Hand chain	Measure 	<table border="1" data-bbox="572 204 807 296"> <thead> <tr> <th>Size mm</th> <th>A (mm)</th> <th>B (mm)</th> </tr> </thead> <tbody> <tr> <td></td> <td>Discard</td> <td>Discard</td> </tr> <tr> <td>5x23.7</td> <td>≥ 25</td> <td>≤ 4.5</td> </tr> </tbody> </table>	Size mm	A (mm)	B (mm)		Discard	Discard	5x23.7	≥ 25	≤ 4.5	Replace				
Size mm	A (mm)	B (mm)														
	Discard	Discard														
5x23.7	≥ 25	≤ 4.5														
Wheel	Measure 	<table border="1" data-bbox="575 395 804 608"> <thead> <tr> <th rowspan="2">Capacity</th> <th>C (mm)</th> </tr> <tr> <th>Discard</th> </tr> </thead> <tbody> <tr> <td>0.5t</td> <td>≤ 49.5</td> </tr> <tr> <td>1t</td> <td>≤ 63.5</td> </tr> <tr> <td>2t</td> <td>≤ 75</td> </tr> <tr> <td>3t</td> <td>≤ 94</td> </tr> <tr> <td>5t</td> <td>≤ 114</td> </tr> </tbody> </table>	Capacity	C (mm)	Discard	0.5t	≤ 49.5	1t	≤ 63.5	2t	≤ 75	3t	≤ 94	5t	≤ 114	Replace
	Capacity	C (mm)														
Discard																
0.5t	≤ 49.5															
1t	≤ 63.5															
2t	≤ 75															
3t	≤ 94															
5t	≤ 114															
Check visually	Check the wheels for wear and tear, cracks or deformation. Check for smooth rotation.	Replace														