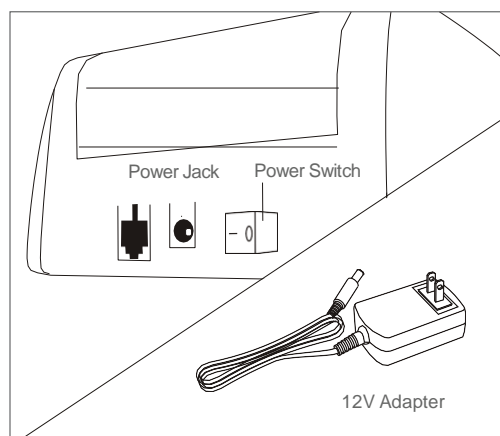




D450
Bleached Bill Detector

START UP GUIDE

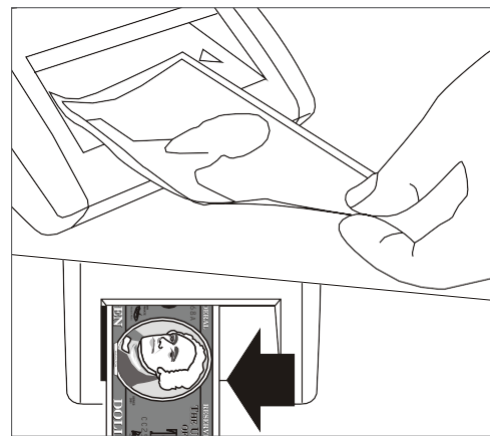
1. Powering the Detector / Encendido



- To power the detector, simply plug in the included adaptor and position the power switch to ON.

Conecte el adaptador de corriente y proceda a encender el detector.

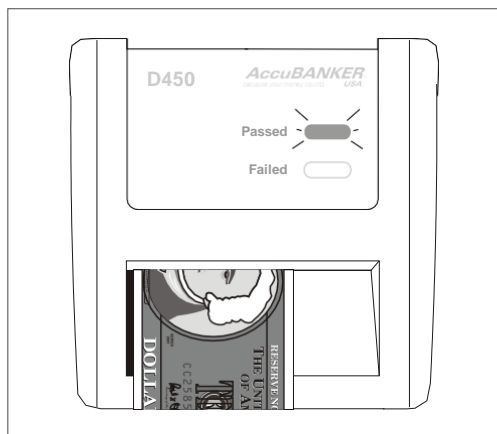
2. Testing a Bill / Modo de Empleo



- To test a bill, insert it face up, and well aligned towards the left. Once the bill has been inserted, it will be tested automatically.

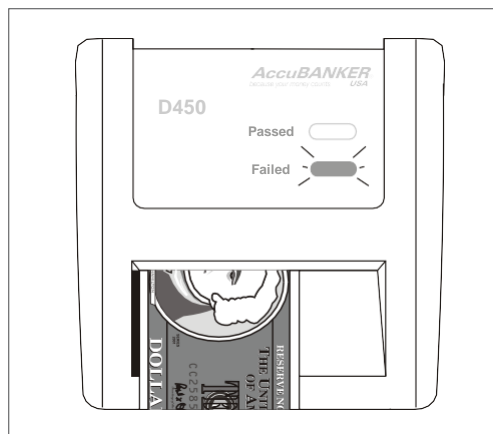
Inserte el billete como se indica en la figura (cara hacia arriba y alineado hacia la izquierda). El billete será verificado de forma automática.

3. Reading the Results / Resultados



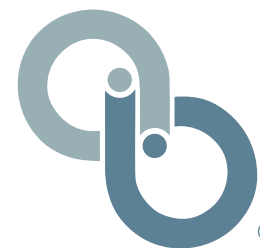
- A GREEN light and a single BEEP will confirm that the bill PASSED the detection test.

Los billetes ACEPTADOS por el detector serán confirmados con el indicador VERDE y un solo aviso audible.



- A RED light and THREE BEEPS alert will confirm that the bill FAILED the detection test.

Los billetes RECHAZADOS por el detector serán confirmados con el indicador ROJO y TRES avisos audibles.



D450
Bleached Bill Detector

