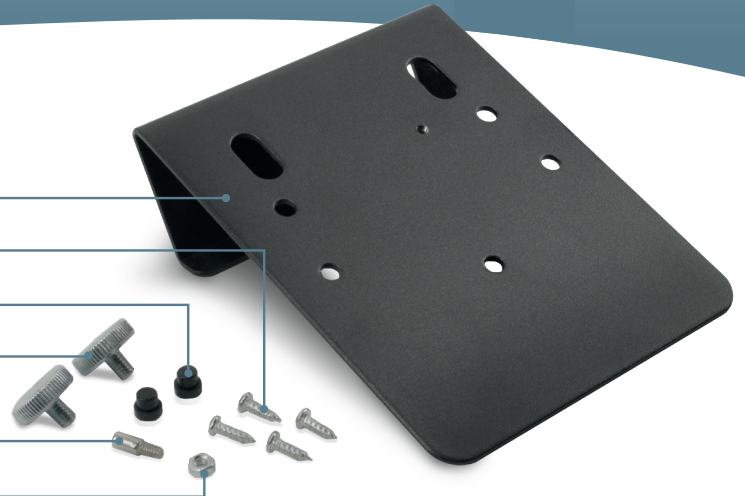


# AccuSTAND

Installation Guide for: D470 • LED420 • LED425 • LED430 • LED440

## Parts needed

1. Metal stand (1pc)
2. Holding screws (4pcs)
3. Rubber feet (2pcs)
4. Thumb screw \* (1-2pcs)  
\*2pcs needed for D585 model only
5. Guider pole (1pc)
6. Guider knob (1pc)

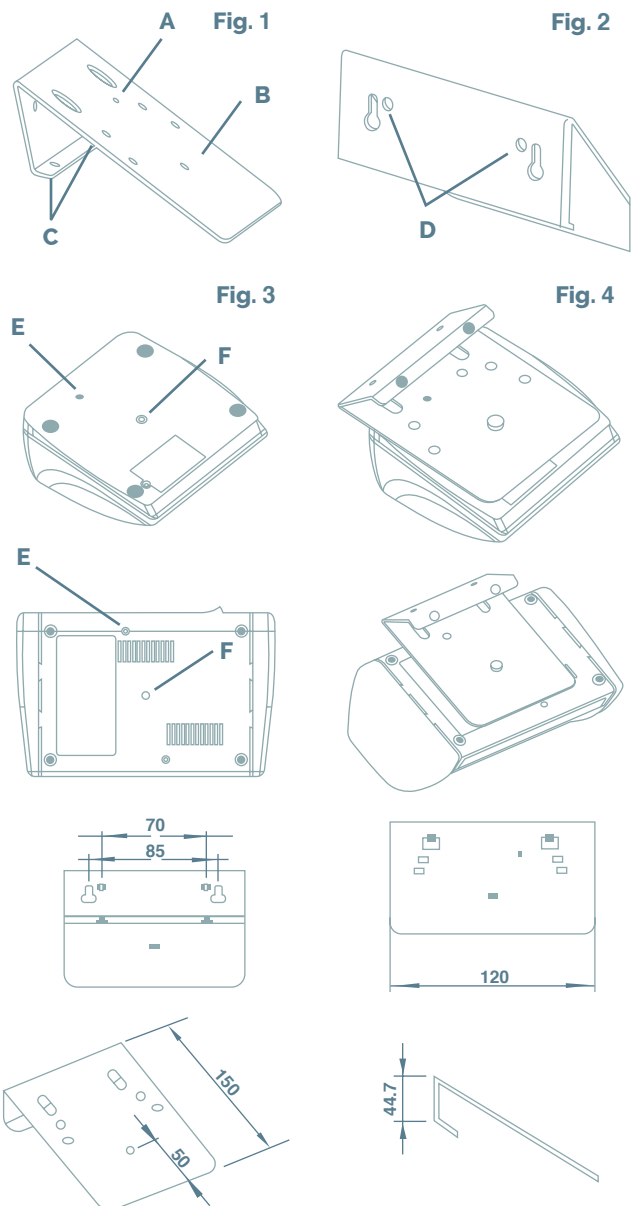


## Vertical surface installation

1. In the location where the detector will be installed, make two point marks 85 mm from each other **Fig. 2, hole D** in a horizontal position to install the holding screws.
2. Tighten the holding screws into the surface/wall to support the metal base.
3. Proceed to set up the metal base with the detector as described in the instructions below (horizontal surface installation).

## Horizontal surface installation

1. Place the rubber feet into the two holes labeled **C** in **Fig. 1**
2. Screw the Guider pole into the top of the base in hole **A** indicated in **Fig. 1**. Tighten the mounting Guider knob into the Guider pole.
3. Insert the Guider pole into hole **E** located at the base of the detector **Fig. 3**. Attach the Thumb screw to secure the base of the unit as shown in **Fig. 4**, using threaded hole **F** indicated in **Fig. 3**.

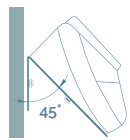
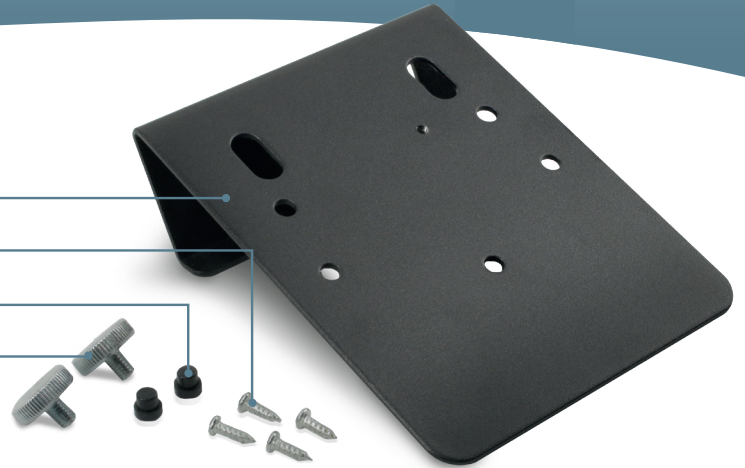


# AccuSTAND

## Installation Guide for: D585

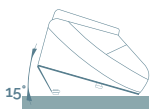
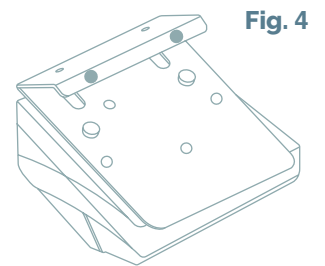
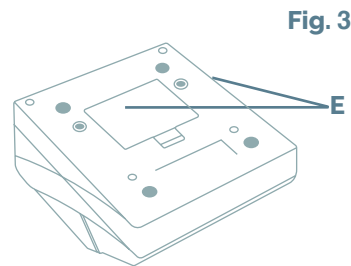
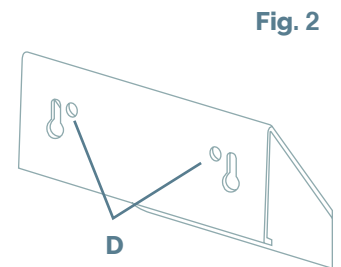
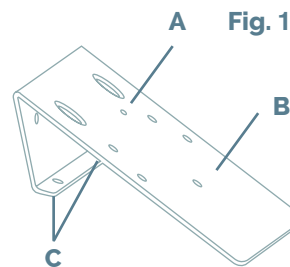
### Parts needed

1. Metal stand (1pc)
2. Holding screws (4pcs)
3. Rubber feet (2pcs)
4. Thumb screw (2pcs)



### Vertical surface installation

1. In the location where the detector will be installed, make two point marks 85 mm from each other **Fig. 2, hole D** in a horizontal position to install the holding screws.
2. Tighten the holding screws into the surface/wall to support the metal base.
3. Proceed to set up the metal base with the detector as described in the instructions below (horizontal surface installation).



### Horizontal surface installation

1. Place the rubber feet into the two holes labeled **C** in **Fig. 1**
2. Tighten the two thumb screws into the metal thread holes located in the bottom of the unit, labeled **E** to secure the unit to the AccuSTAND as is shown in **Fig. 4**, using the threaded hole **E** indicated in **Fig. 3**.

