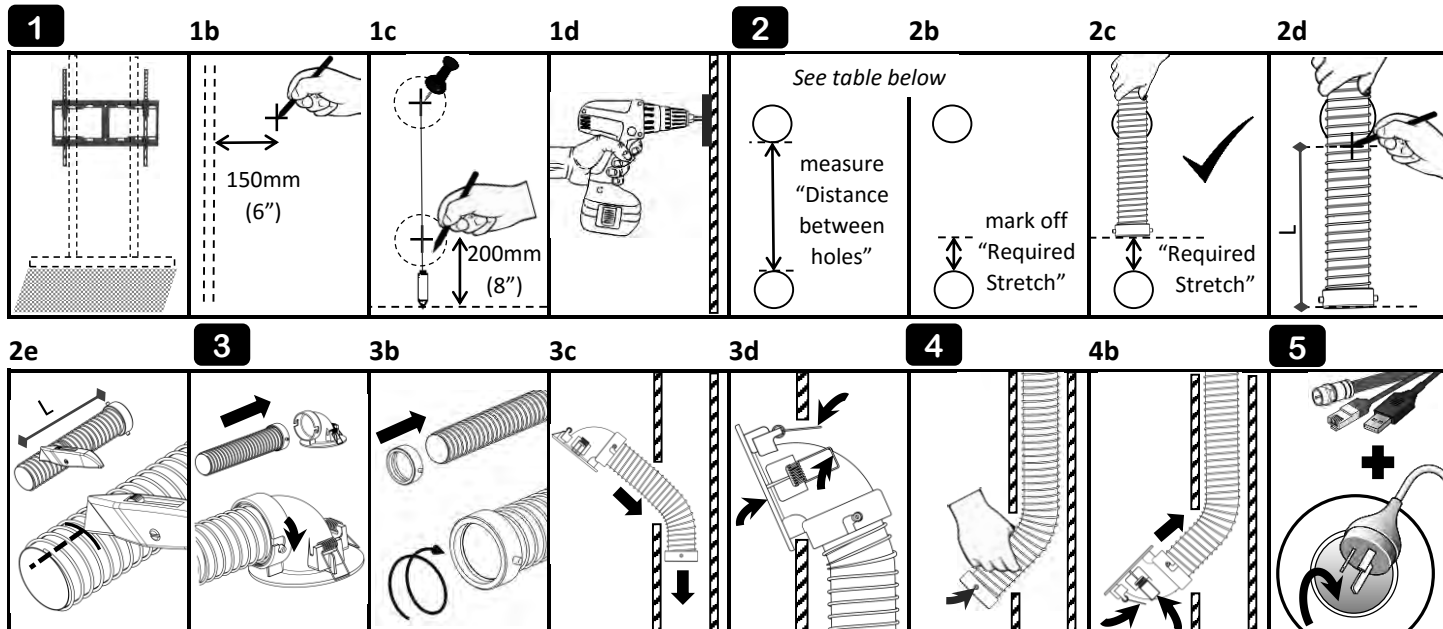
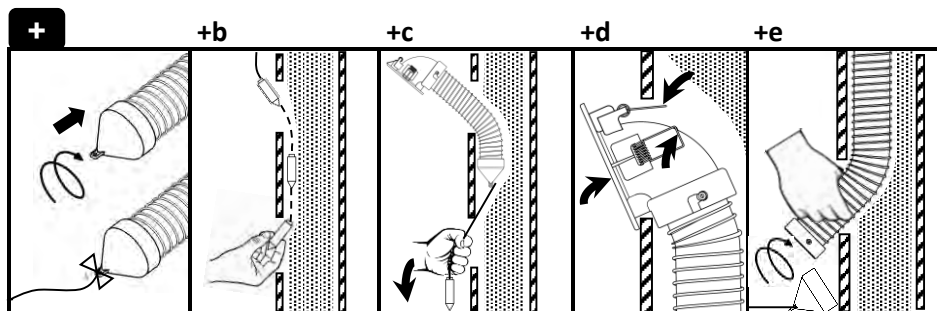


EASY 5-STEP INSTALLATION INSTRUCTIONS FOR CABLECLEAR



- Remove the TV from the wall and determine the position of internal wall studs.
 - 1b** Centre mark the top hole for CableClear (where cables will enter wall) a minimum of 150mm (6") away from wall studs.
 - 1c** Hang the plum bob by the pin from top hole centre mark. Centre mark the bottom hole for CableClear (where cables will exit) along the string a minimum of 200mm (8") from the floor. Remove the plumb bob.
 - 1d** Drill top and bottom holes in the plasterboard/drywall using the hole saw provided. **SAFETY WARNING:** Before drilling, please ensure there is no electrical wiring in the wall directly behind. If there is, or you suspect there may be, please contact a licensed electrician to assist you.
 - Measure the distance between the underside of the top hole and topside of the bottom hole. Use this measurement to look up the "Required Stretch" for the hose in the table below. The hose must be stretched this amount when installed.
 - 2b** From the topside of the bottom hole, measure the "Required Stretch" vertically upwards. Mark this distance clearly on the wall.
 - 2c** Stretch the hose out fully for 10 seconds and release. Now hold the hose in one hand just above the top hole and allow the hose end with the connector on to hang down freely. Adjust the hose length until the bottom of the hose connector lines up with "Required Stretch" mark.
 - 2d** Clearly mark the hose in line with the underside of the top hole.
 - 2e** Trim the hose using a knife or scissors by first cutting the soft plastic between coils through one revolution and then cutting the hose coil. It is important to start and finish the soft plastic cut in line with where the coil has been cut at the end of the hose.
 - Clip the hose end with the connector attached into one CableClear elbow.
 - 3b** Screw the other CableClear connector onto the trimmed hose end.
 - 3c** Feed the hose end through the top hole and down inside the wall cavity until the elbow reaches the wall.
 - 3d** Depress the elbow springs, rotate the elbow into top hole, guide and release springs into the hole and gently push the elbow into position.
 - Insert hand into the bottom hole, reach up and pull hose down and through. Adjust connector slightly, if necessary, so the pins are as shown.
 - 4b** Clip on second elbow, allow the hose to retract, depress the elbow springs, rotate elbow into the hole, release springs and push into position.
 - Feed cables through from the top; power cable first, other cables thereafter. Tape ends of other cables together to feed through easier.
- For wall plugs too big to fit through, reverse feed the cable by feeding the plumb bob through, taping the cable end to it and pulling it back up.

IF YOU ENCOUNTER INSULATION IN THE WALL



.... Follow steps 1.a to 3.a detailed above, then:

- +** Screw the CableClear insulation cone onto the trimmed hose, untie the pin from the plum bob and tie the string onto the insulation cone.
- +b** Feed the plum bob through the top hole down inside the wall cavity between the insulation and the plasterboard/drywall sheeting. Pull the plum bob out through the bottom hole.
- +c** Feed the cone into the top hole and pull the string down firmly to pull the hose through the insulation until the elbow reaches the top hole.
- +d** Depress the elbow springs, rotate the elbow into the hole, guide and release the springs into the hole and then gently push the elbow into position.
- +e** Pull the hose out through the bottom hole, unscrew the insulation cone and screw on the connector.
- Finish with steps 4 and 5 above.

*Distance between holes (mm)	Required Stretch (mm)	*Distance between holes (")	Required Stretch (")
200	20	8"	3/4"
250	35	10"	1 3/8"
300	50	1' 0"	2"
350	65	1' 2"	2 5/8"
400	80	1' 4"	3 1/4"
450	90	1' 6"	3 5/8"
500	100	1' 8"	4"
550	110	1' 10"	4 3/8"
600	120	2' 0"	4 3/4"
650	125	2' 2"	5"
700	130	2' 4"	5 1/8"
750	135	2' 6"	5 3/8"
800	140	2' 8"	5 1/2"
850	145	2' 10"	5 3/4"
900	150	3' 0"	6"
950	155	3' 2"	6 1/8"
1000	160	3' 4"	6 3/8"

*for values in between, interpolate the Required Stretch