

PACIFIC RC JETS

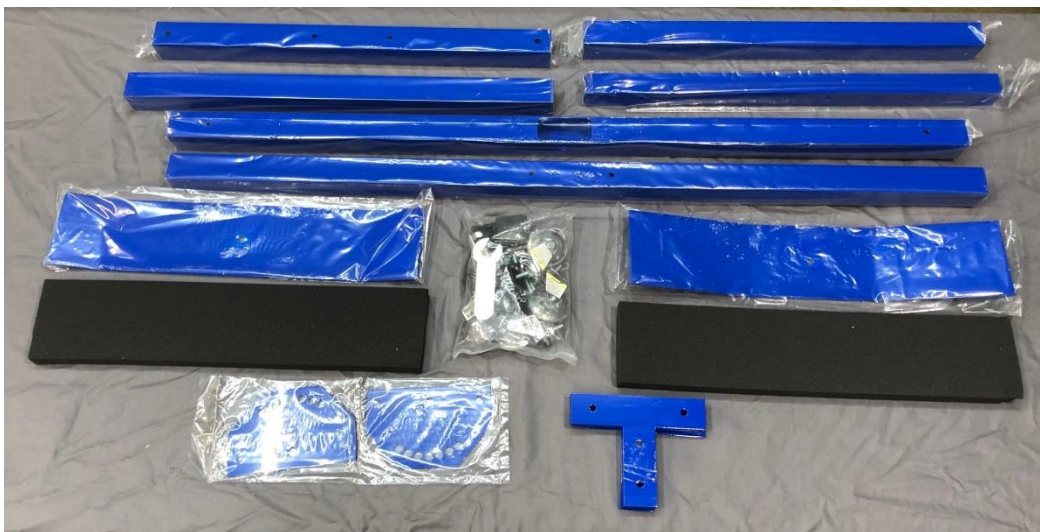


BUILD/DISPLAY STAND ASSEMBLY MANUAL





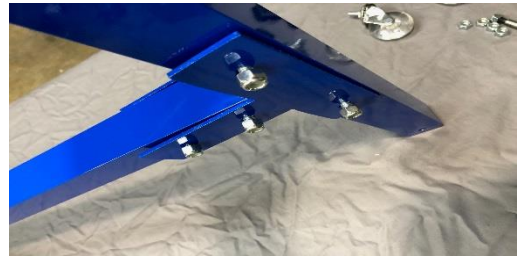
DO NOT use a Razor Blade to cut packaging open or you may damage the Powder coated finish, open at ends and slide parts out.



Lay-out parts and hardware.

Tools required:

- **7/16 Wrench and Socket**
- **½" Wrench and Socket**
- **3/16 Alan Wrench**
- **Medium CA (For Gluing Pads On)**
- **Rubber Mallet**
- **Thin Caster wrench provided**

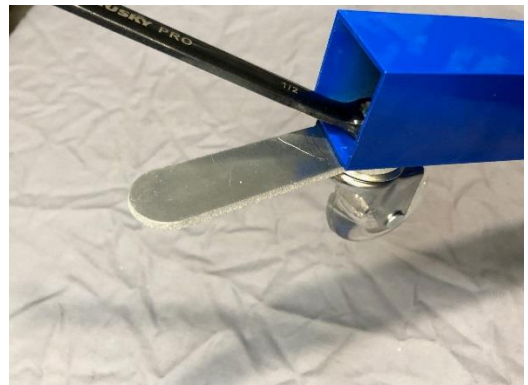


Locate 1 Long and 2 Short tubes.

Gather 4 flat T Brackets (8) 7/16 bolts/nuts and build lower stand section.



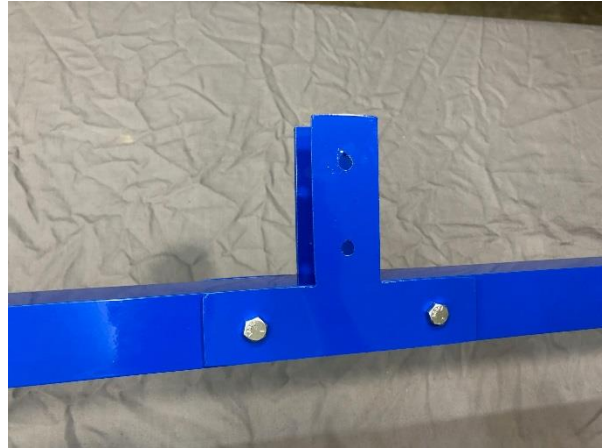
Locate the (4) Caster and 1/2" nuts. Use provided Caster wrench to hold Casters while tightening.



NOTE: after assembly lube the wheel bearings with WD-40 or equivalent to help spin freely.



Install end caps on all 4 corners using a rubber mallet.



Gather 4 flat T Brackets (4) 7/16 bolts/nuts and build center upright onto lower stand section.



Slid adjustable center tube into place and install ball push pin.



Locate and install top pivot bar using the (2) side plates, 3/16 Alan shoulder pivot bold with nut and (2) ½" bolts with nuts. Securely tighten and install pivot ball push pin.



**Locate and Install the (2) cradle platforms using (2) ½" bolts with nuts.
After the platforms are mounted, install the end caps using a rubber mallet.**



Use medium CA around the edges and center of the foam and locate the foam onto the cradle platforms. Keep pressure on them until the CA sets.

COMPLETE