



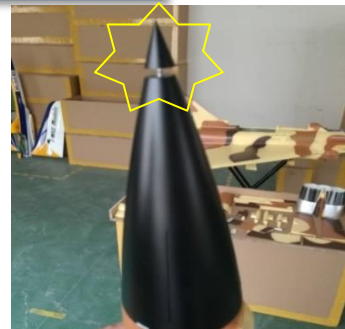
Eurofighter installation manual

1. Nose assembly

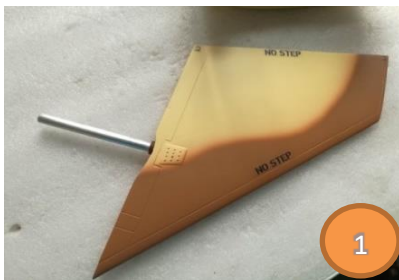


clamp screw

cover



2. Canard assembly



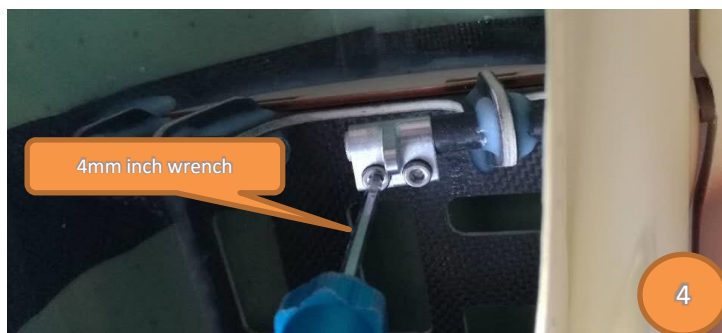
1



2



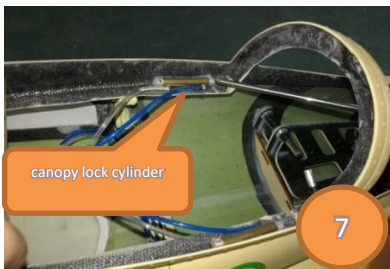
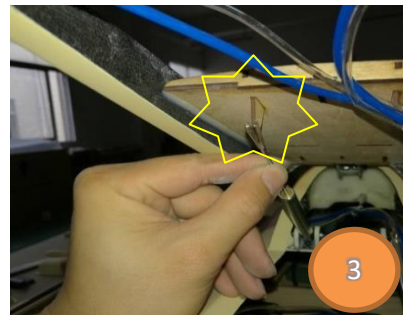
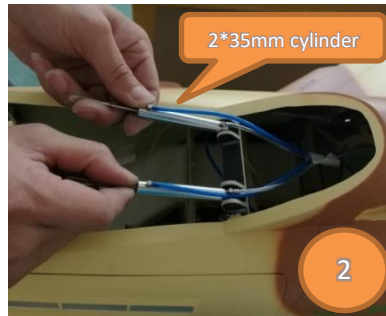
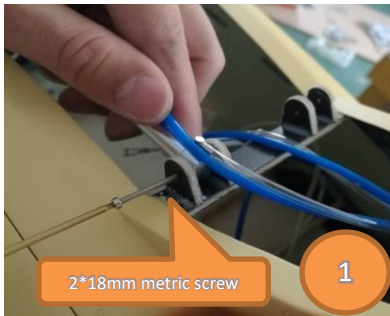
3



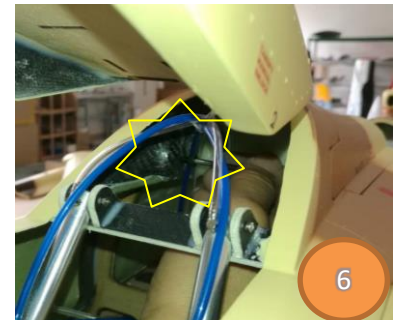
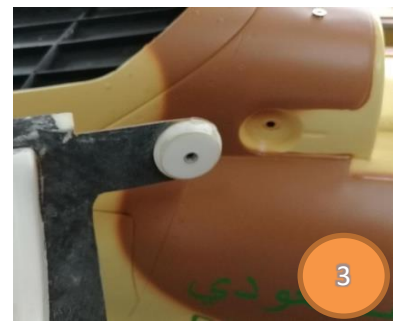
4mm inch wrench

4

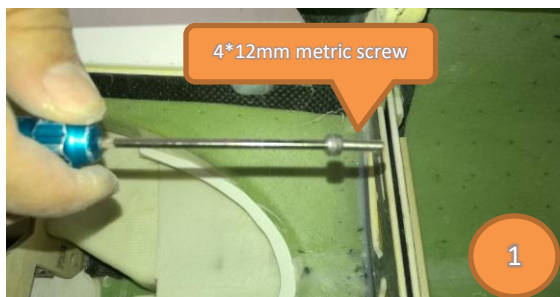
3. Canopy assembly



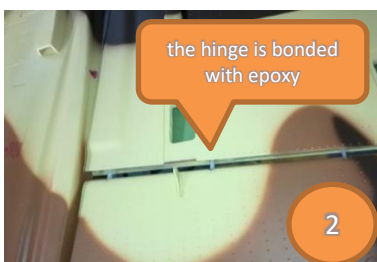
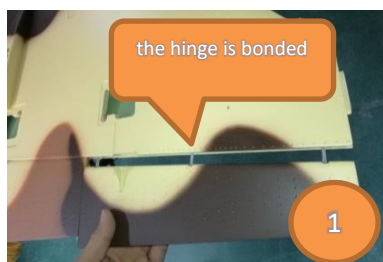
4. Air brake assembly



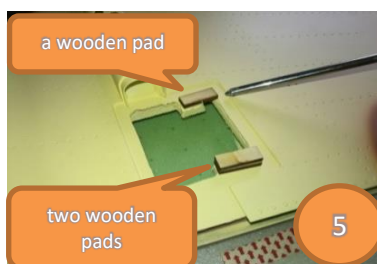
5. Fuselage connection



6. Main wing servos, surface and cover assembly



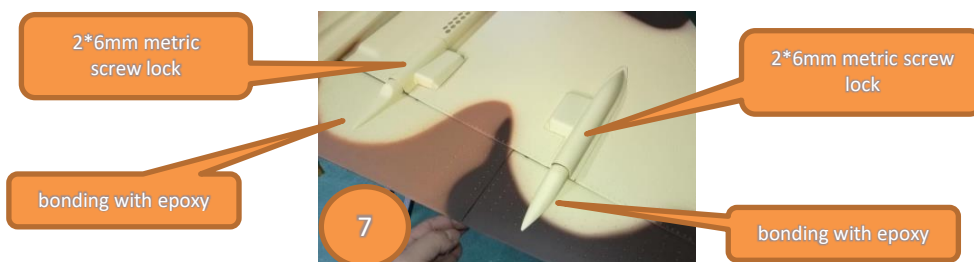
Aileron servos



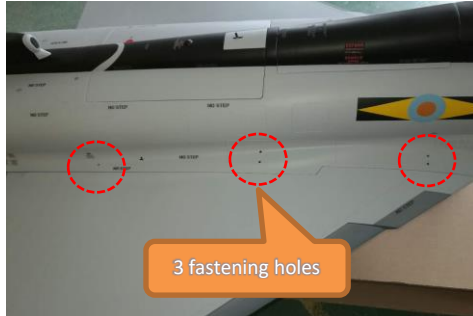
Flap servos



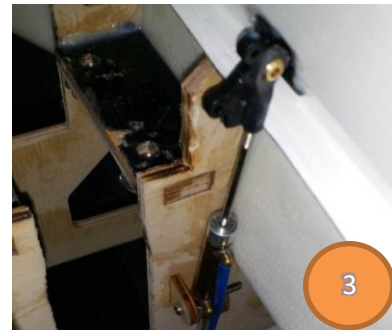
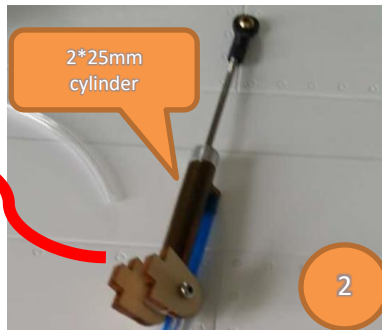
L type servo support



7. Main wings assembly



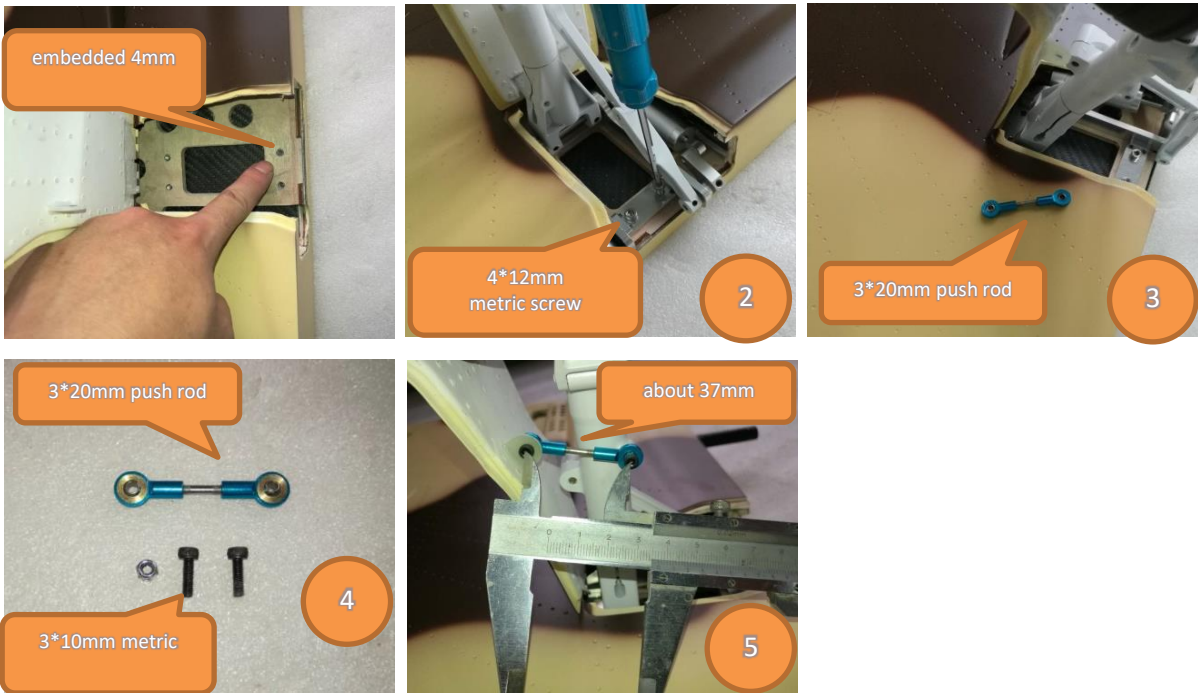
8. Nose gear doors cylinder assembly



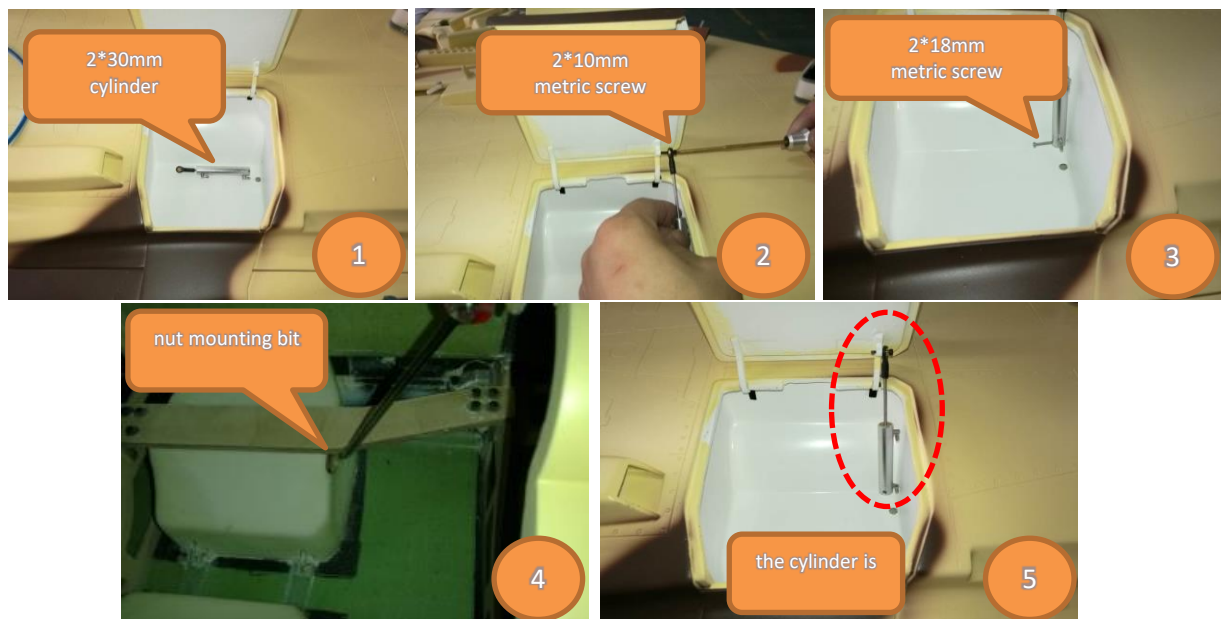
9. Installation of nose landing gear



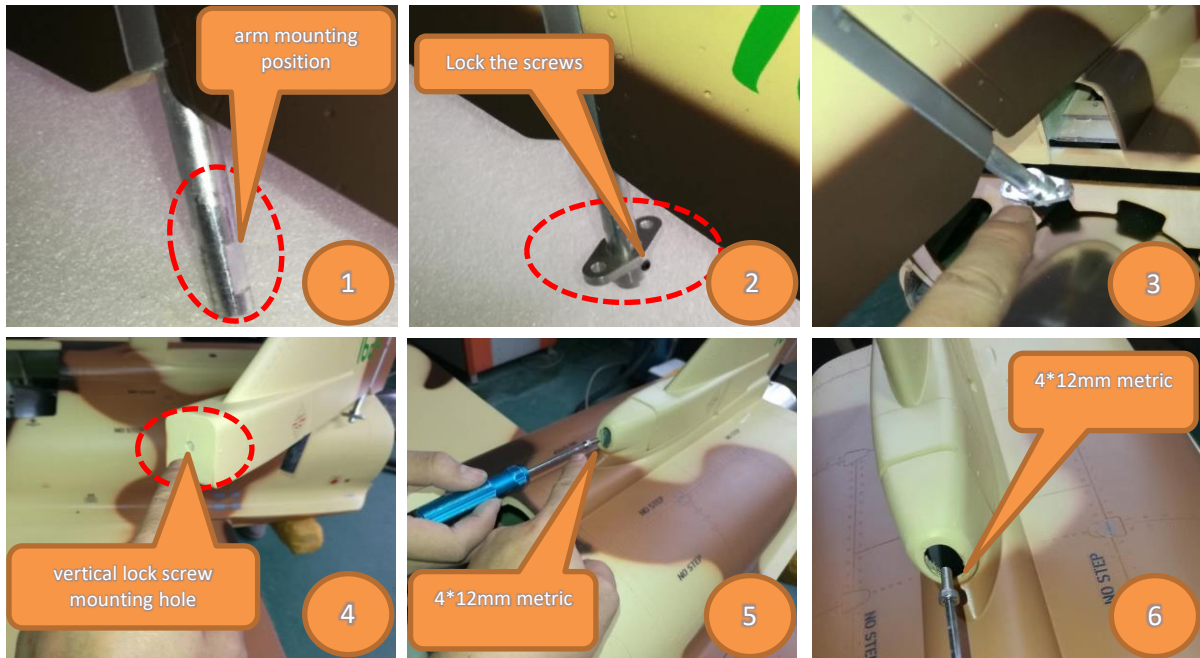
10、 Installation of main landing gear



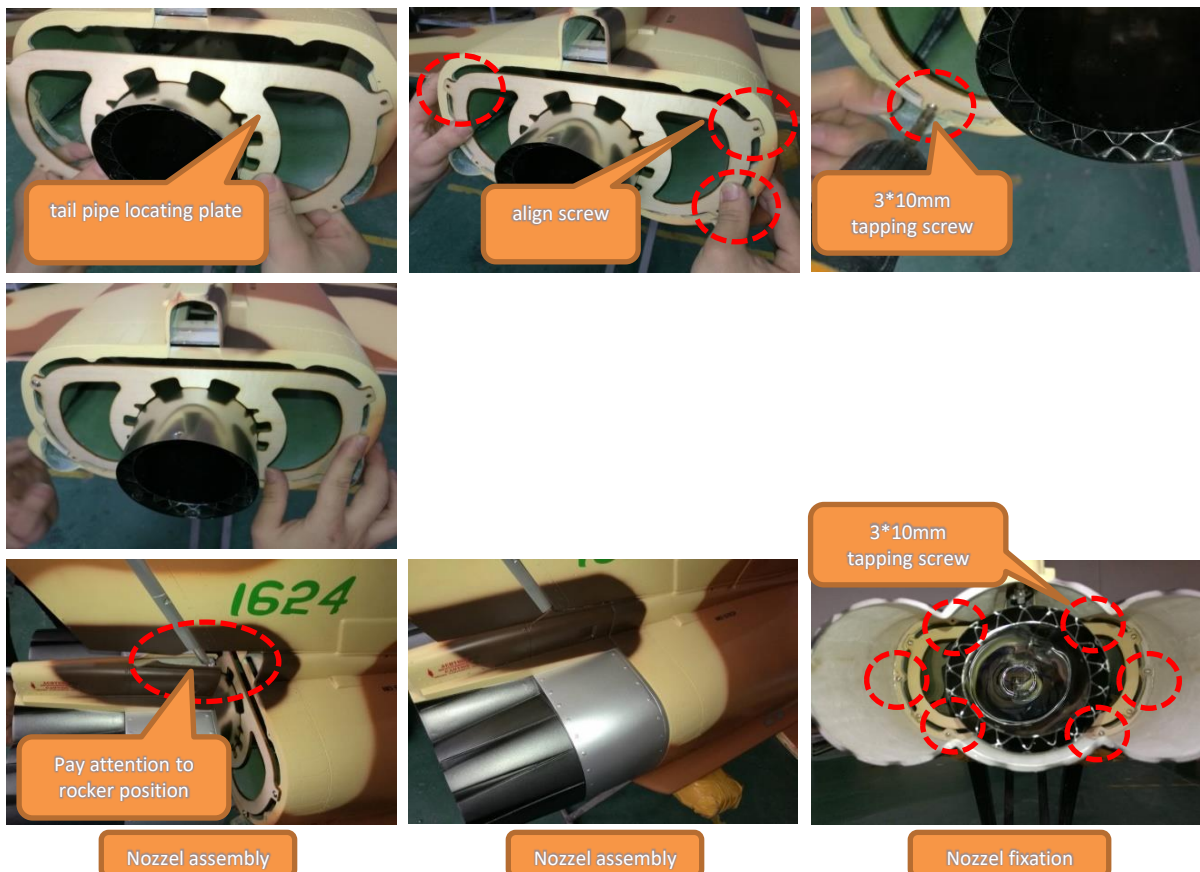
11、 main gear door cylinder assembly



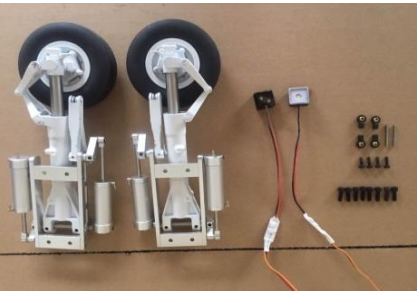
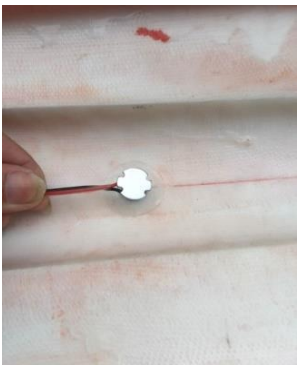
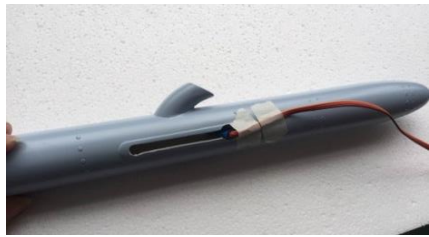
12、 Vertical assembly



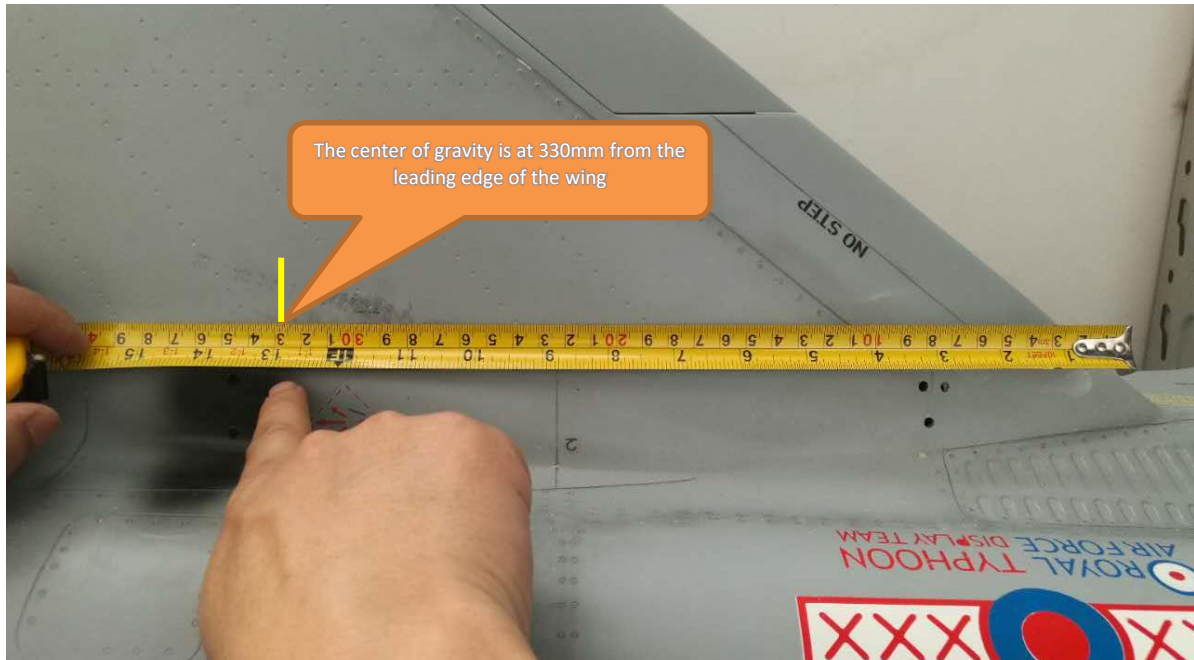
13、 tail pipe assembly



14. Installation of navigation lights



15、CG position



15、Surface parameters

Item	Surface parameter
Aileron	$\pm 30\text{mm}$
Flap	20mm, 40mm
Canard	鸭翼 $\pm 20 \sim 25\text{mm}$
Rudder	$\pm 30\text{mm}$
CG	330mm

