

# internal water spray low speed handpiece



## Specification

Product model	M2
Bur size	Φ2.35mm
Rotat speed	16000-22000rpm
Reverse Rotate speed	16000-22000rpm
Noise	≤60dB
Working air pressure	0.28Mpa-0.3Mpa
Water flow	90-110ml/min
Chuck type	Push button
Order ID	102013

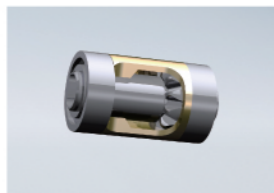
## Accessories



Back cap No.210059



Motor blades No.311041



Cartridge No.210037



Bearing No.301027



Guangdong JINME Medical Technology Co.,Ltd

Address:A15,New lighting Source Industrial,Base,Foshan,China

Tel:+86-757- 88777979

<http://www.jinmedental.cn>

E- mail:info@jinmedental.com

The design is subject to change without prior notice.



Distributor



## M2

### Internal water spray Low speed handpiece

It is more convenient to operate with internal water spray instead of water pipe claws connected.

## Internal water spray low speed handpiece VS external water spray low speed handpiece



Latch type contra angle handpiece wastes time and energy to install polishing bur, and it is easy to loose after a long time, which reduces the clamping force, the bur is easy to jump out.



Push button type contra angle handpiece says goodbye the latch type, it is a quicker, more convenient and time-saving way to save any minutes for dentist and patient.



It will be a trouble for dentists to install the water pipe claws on the external water spray low speed handpiece, because it is hard to find out the small part when needed.



The water spray nozzle is designed on the front end of push button type contra angle handpiece, which saves trouble to install the water pipe claws. The spraying position is more precise.



If the straight handpiece without water spraying function, it will create dust when the dentists and technicians grind, which affect their health.



With water spraying function on the internal water spray straight handpiece, it will reduce dust when the dentists and technicians grind.



With external water spray on the air motor connector, it is not convenient to operate when the water tube winds around the handpiece body and attach your hand. If you do not connect the water tube, it will produce the noise of blowing air, which interferes with treatment.



Without external water tube connector, it is much easier to operate because the water passes through the air motor to make sure the motor 360 degree rotates.

Internal water spray low speed handpiece



External water spray low speed handpiece

