

PASTA LIFTER
SPEC SHEETS

SPECIFICATIONS:

AUTOMATIC PASTA LIFTERS

L72 & L92



The Italiana FoodTech automatic lifter is an ideal solution for any fast paced restaurant with fast production times or a high rate of turnover in staff. A lifter is sure to make your life easier and help ensure a uniform end product. Insert the pasta in the basket and press start, the lifter will immerse the pasta in water, once time is up, you will hear a beep sound and the basket will have already drained the pasta. Simple and effective!

FEATURES:

- Individual timer with easy to read digital display for each lifter.
- Works with Italiana FoodTech single tank and double tank pasta cookers
- Made with AISI 304 18/10 stainless steel with Scotch-Brite brushed finish
- Made with AISI 216 15/10, 2mm thick tops.
- Adjustable feet for a level machine

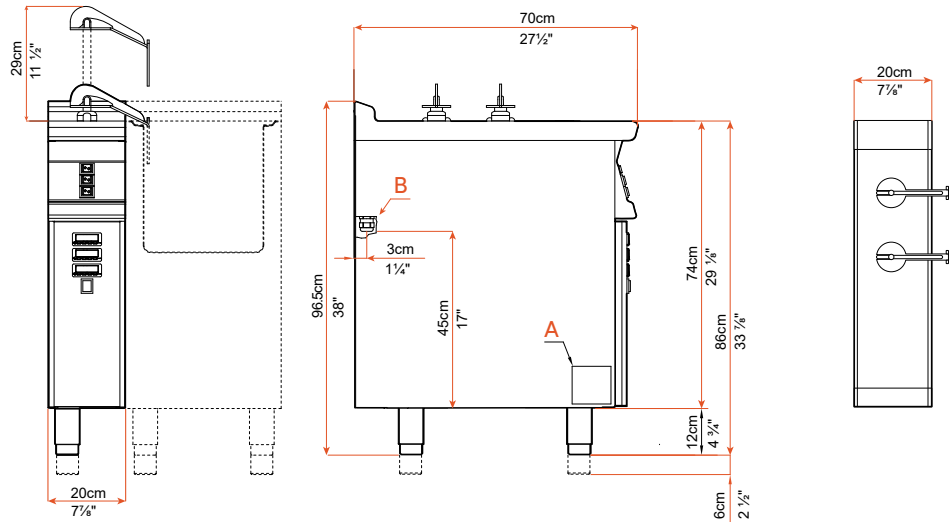
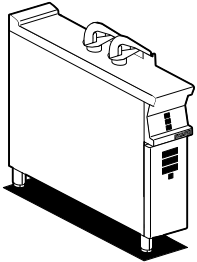


AUTOMATIC PASTA LIFTERS

A = DATA PLATE
B = ELECTRICAL CONNECTION

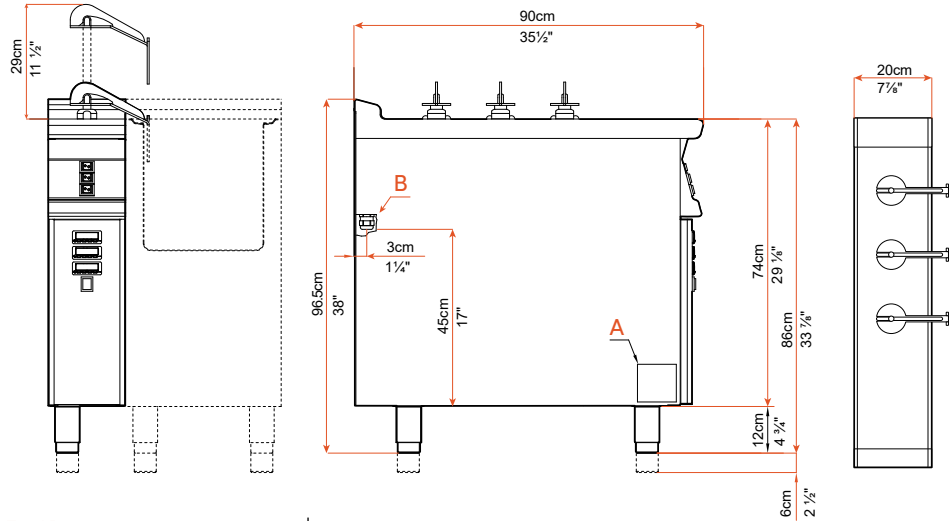
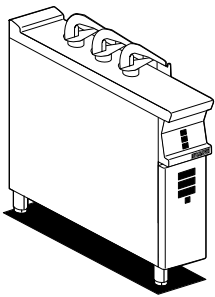
L72

COMPATIBLE WITH:
E74/E78/G74/G48 PASTA COOKERS



L92

COMPATIBLE WITH:
E94/E98/G94/G98 PASTA COOKERS



Electrical Information

Model	Total Power		Phase
	Kw	Voltage	
L72	0.35	220	1
L92	0.525	220	1

Cable Length: 4' / 122cm
Cable Type: 3x1AWG

Model Information

Model	Dimensions Inch			Dimensions cm			Weight	
	W	D	H	W	D	H	Lb	Kg
L72	8	27 1/2	38	20	70	96.5	99	45
L92	8	35 1/2	38	20	90	96.5	143	65

Shipping Information

Model	Dimensions Inch			Dimensions cm			Weight	
	W	D	H	W	D	H	Lb	Kg
L72	10	30	45	25	75	115	110	55
L92	10	40	45	25	95	115	155	75



The manufacturer reserves the right to modify the technical data and models without previous notice.

ITALIANA Foodtech
815 Alness St. Toronto Ont. M3J 2H8 Canada
T: 647.577.3477 - F: 647.977.9214
info@italiana.ca / www.italiana.ca