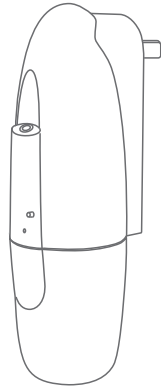


# Product Instruction

Plug-in Diffuser



Android System  
Download



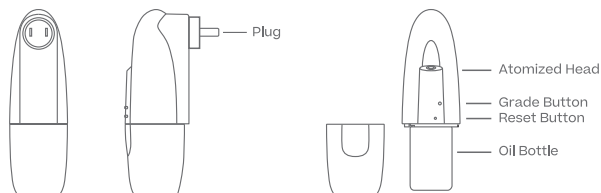
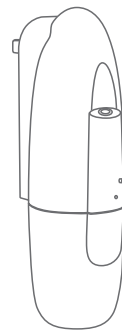
iOS System  
Download



If the QR code cannot be scanned, please search for "Doctor Aromas" in Google Play or AppStore.

## 01. Specification

|              |                                                         |
|--------------|---------------------------------------------------------|
| 【 Model 】    | AE103                                                   |
| 【 Size 】     | 122*65*214mm                                            |
| 【 Bottle 】   | 100ml                                                   |
| 【 Input 】    | AC100V-240V 50/60Hz                                     |
| 【 Power 】    | 2W                                                      |
| 【 Coverage 】 | 25m <sup>2</sup> /75m <sup>3</sup> /2650ft <sup>3</sup> |
| 【 N.W. 】     | 0.30kg                                                  |
| 【 Material 】 | plastic                                                 |



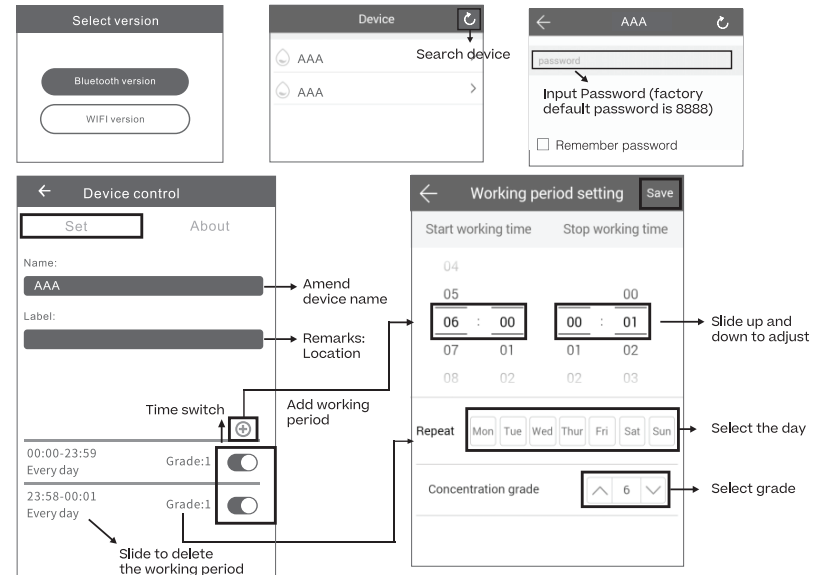
## 02. Bluetooth Instruction

**Where to get the app:**

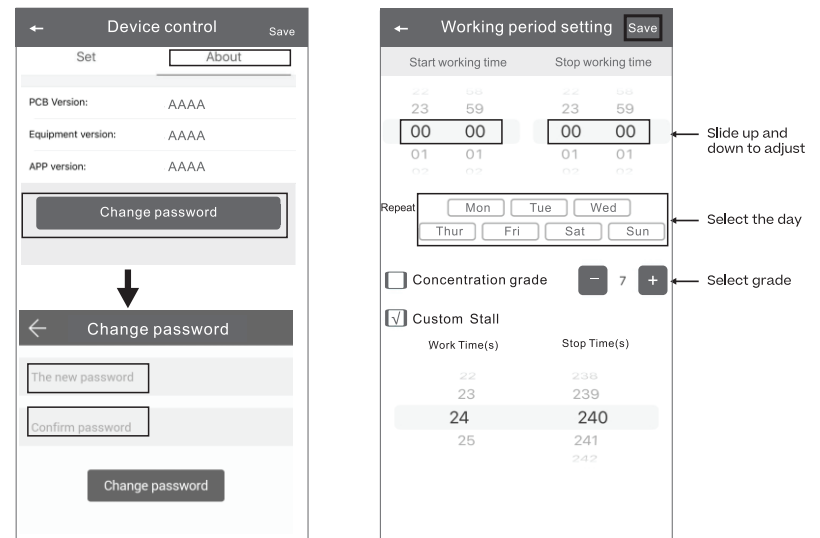
Please search "Doctor Aromas" in Google Play or App Store.

**Note:**

1. Please make sure that the Bluetooth function is turned on;
2. Please make sure that the location function of the mobile phone is turned on.

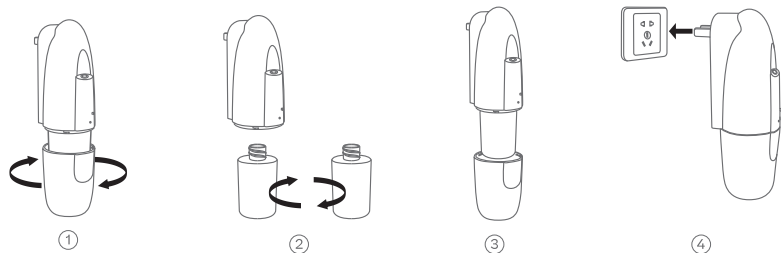


## Amend Password



If you forget the password, please press the reset button to restore the factory setting. The factory settings password is 8888.

### 03. Installation Method



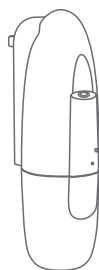
1. Unscrew the lower cover;
2. Unscrew the oil bottle to fill or change the essential oils;
3. Screw the oil bottle and the lower cover;
4. Plug in the sockets.

#### Application place:

- Hotel
- Meeting Room
- Toilet-Aisle
- Brand Store

### 04. Operating Instructions

APP Version: controlled by APP, more convenient and intelligent.



- Reset:**
  - Short press to restore the original password "8888".
  - Long press to restore factory setting.
- Indicator:**
  - When it is on, it means the machine is during the working period.

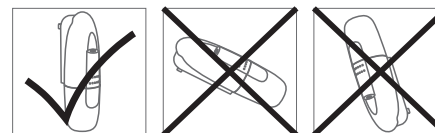
### 05. Concentration and consumption

| Grade      | Work Time(s) | Stop Time(s) | Consumption (g/h) |
|------------|--------------|--------------|-------------------|
| G1         | 15s          | 285s         | 0.07              |
| G2         | 15s          | 135s         | 0.15              |
| G3         | 15s          | 85s          | 0.23              |
| G4         | 15s          | 60s          | 0.30              |
| Customized | 3-15s        | 60-900s      | -                 |

- Notes:**
1. The working time above of each grade is 15s.
  2. Different grade and oil may be with different consumption.

### 06. Warning ⚠

1. Please keep the machine vertical. Tilt or lie flatly may cause the oil overflow. The efficiency of the machine may be very affected.
2. Shall not modify, disassemble or repair the machine.
3. Do not use this product under high humidity and high pressure conditions.
4. It is better to screw the machine on the wall than just stick it via tape; otherwise, the machine will be easy to fall down.



### 07. Troubleshooting

Before asking to have the machine repaired, please try to diagnose the problem first, following the instructions below.

| Trouble          | Solution                                                                                                                                                                                                                                                                                                                             |
|------------------|--------------------------------------------------------------------------------------------------------------------------------------------------------------------------------------------------------------------------------------------------------------------------------------------------------------------------------------|
| Does not Diffuse | <ul style="list-style-type: none"> <li>- Check whether the machine is in "not working period". If yes, it won't spray.</li> <li>- Check whether the air pump is damaged. If yes, replace it with a new one.</li> </ul>                                                                                                               |
| Sprays Little    | <ul style="list-style-type: none"> <li>- Check whether the gasket is damaged or loose. Please adjust it or replace it with a new one.</li> <li>- Check whether the atomized core is plugged; clear it with alcohol or replace it with a new one.</li> </ul>                                                                          |
| Oil Spill        | <ul style="list-style-type: none"> <li>- Check whether the atomized head is damaged.</li> </ul>                                                                                                                                                                                                                                      |
| Oil Overflow     | <ul style="list-style-type: none"> <li>- Check whether the oil bottle is loose, please install it correctly.</li> <li>- Check whether the gasket of the atomized head is damaged; if yes, please replace it with another one.</li> <li>- Please keep the machine vertical; tilt or lie flatly will cause the oil overflow</li> </ul> |

### 08. Equipment Cleaning

**The machine needs to be cleaned when the situations below happen:**

1. You're about to change to another kind of essential oil;
2. The atomization volume becomes weak.

#### Cleaning steps:

1. Pull out the atomized head, loose the bottle.
2. Find a larger container and fill the industrial alcohol up, then soak the bottle for 5-10 mins.
3. Airing the bottle.