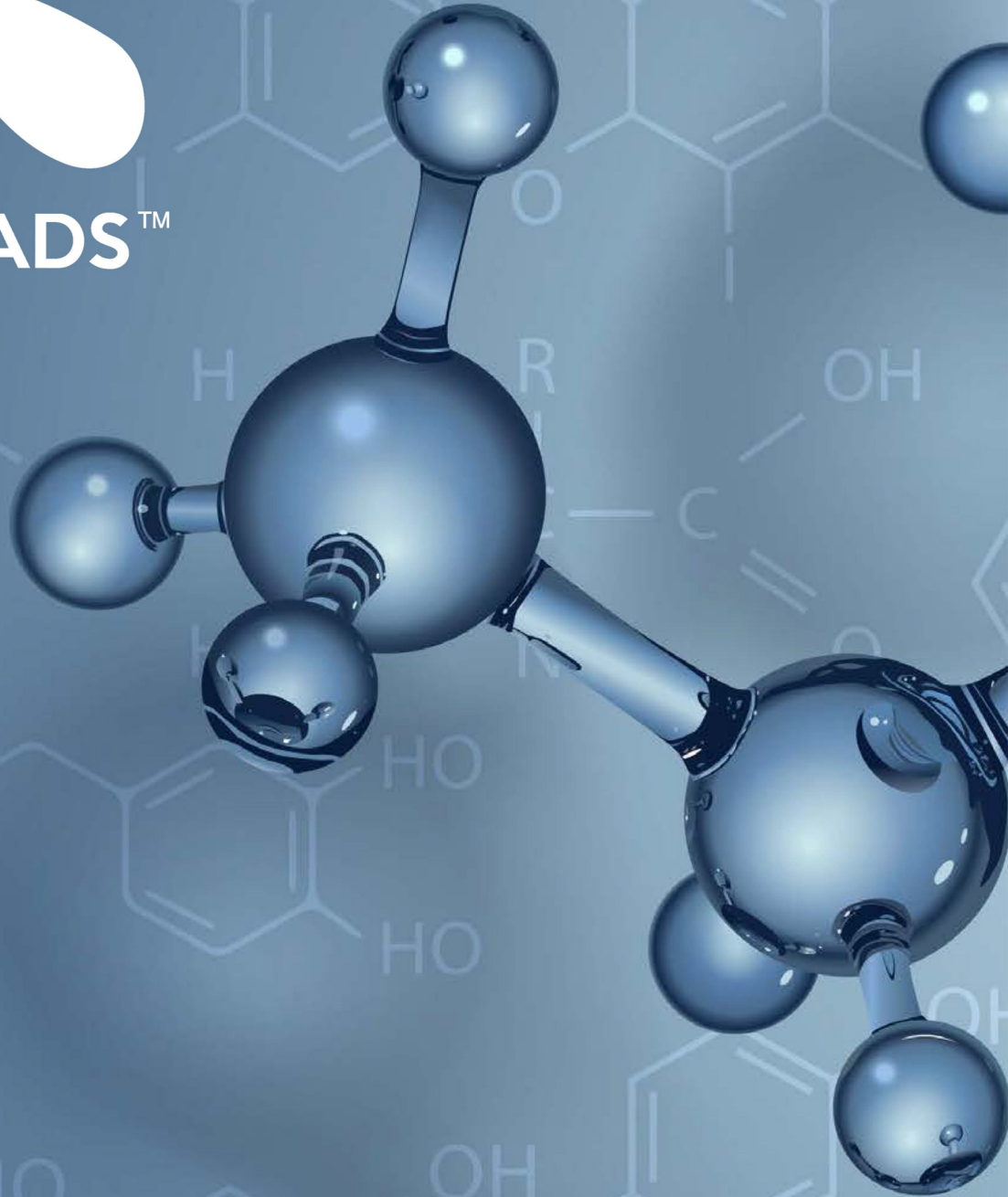




GREEN ROADS™

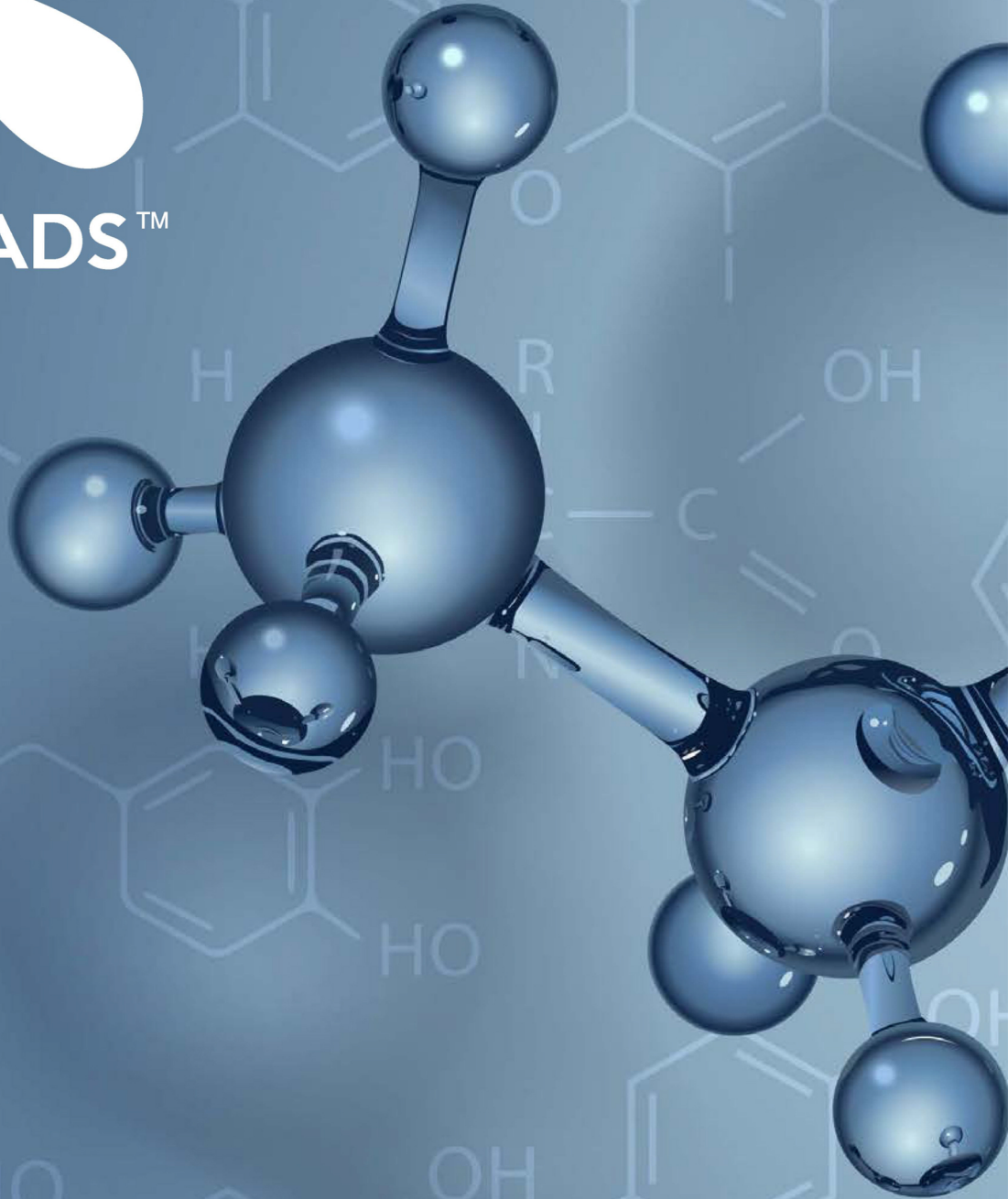


**LAB SHEET PACKET
SETTING THE INDUSTRY STANDARD**

RAW PRODUCT

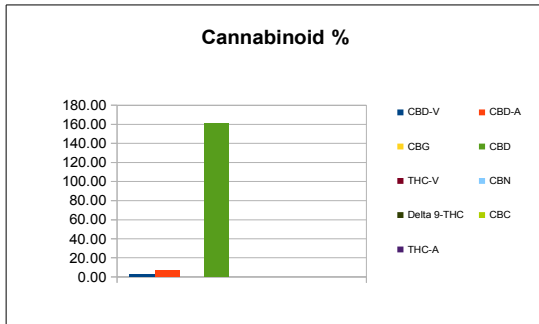



GREEN ROADS™



**LAB SHEET PACKET
SETTING THE INDUSTRY STANDARD**

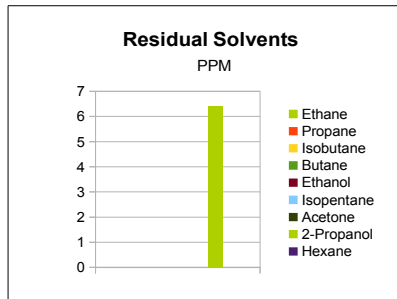
Sample Information		
Sample Identification	PCR 10%	
Laboratory Number	2017009444	
Batch Number	NA	
Matrix	Plant Oil	
Analyzed Date	10/04/17	
Extraction Date	10/04/17	
Cannabinoid (HPLC)	mg/mL	mg /Bottle
Compound		
CBD-V	2.87	NA
CBD-A	6.49	NA
CBG	0.00	NA
CBD	161.18	NA
THC-V	0.00	NA
CBN	0.00	NA
Delta 9-THC	0.00	NA
CBC	0.00	NA
THC-A	0.00	NA
Delta 8-THC	0.00	NA
Cannabinoids Total		
Max Active THC	0.00	NA
Max Active CBD	166.88	NA
T. Active Cannabinoids	164.05	NA
Total Cannabinoids	170.53	NA
Max Active Ratios		
NA :1 CBD to THC		
0.0 :1 THC to CBD		



Sample Image	
	
Micro Visual:	NOT TESTED
Microbial Plate:	NOT TESTED
Percent Moisture	Not Tested



RS (GCMS-HS) Compound	PPM	RL
Ethane	<20.0	20.0
Propane	<5.0	5.0
Isobutane	<5.0	5.0
Butane	<5.0	5.0
Ethanol	<5.0	5.0
Isopentane	<5.0	5.0
Acetone	<50.0	50.0
2-Propanol	6.4	5.0
Hexane	<5.0	5.0
Heptane	<5.0	5.0



mL/bottle	NA
mg THC/bottle	NA
mg CBD/bottle	NA
(mg) total cannabinoids/bottle	NA

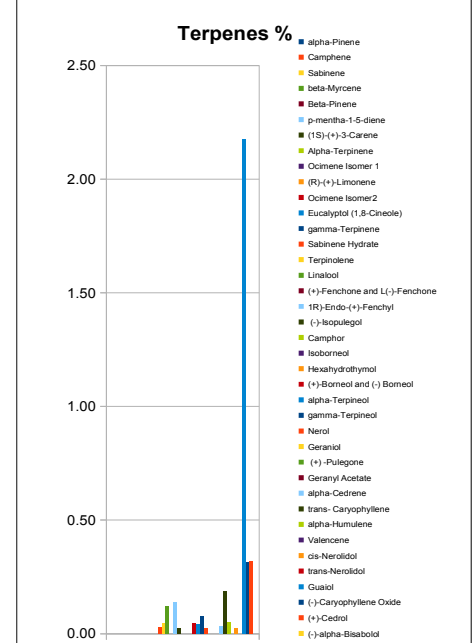
Metals Compound	PPM	RL
Mercury	0.015	0.001
Lead	<0.01	0.010
Arsenic	<0.01	0.010
Cadmium	<0.01	0.010

Pesticides Compound	PPM	RL
Quinoxifen	< 2.0	2.0
Myclobutanil	< 2.0	2.0
Azoxystrobin	< 1.0	1.0
Daminozide	< 1.0	1.0
Paclbutrazol	< 2.0	2.0
B-cyfluthrin	< 4.0	4.0

RL=Reporting Limit
NA=Not Applicable
NT=Not Tested

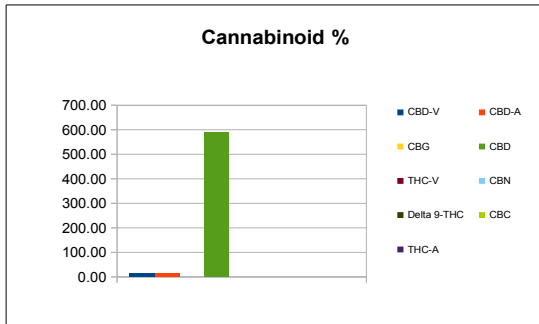



Terpene (GC-MS) Compound	mg/mL	mg/Bottle
alpha-Pinene	0.00	NA
Camphene	0.00	NA
Sabinene	0.00	NA
beta-Myrcene	0.00	NA
Beta-Pinene	0.00	NA
p-mentha-1-5-diene	0.00	NA
(1S)-(+)-3-Carene	0.00	NA
Alpha-Terpinene	0.00	NA
Ocimene Isomer 1	0.00	NA
(R)-(+)-Limonene	0.00	NA
Ocimene Isomer2	0.00	NA
Eucalyptol (1,8-Cineole)	0.00	NA
gamma-Terpinene	0.00	NA
Sabinene Hydrate	0.03	NA
Terpinolene	0.05	NA
Linalool	0.12	NA
(+)-Fenchone and L(-)-Fenchone	0.00	NA
1R)-Endo-(+)-Fenchyl	0.14	NA
(-)-Isopulegol	0.02	NA
Camphor	0.00	NA
Isoborneol	0.00	NA
Hexahydrothymol	0.00	NA
(+)-Borneol and (-) Borneol	0.04	NA
alpha-Terpineol	0.04	NA
gamma-Terpineol	0.08	NA
Nerol	0.03	NA
Geraniol	0.00	NA
(+)-Pulegone	0.00	NA
Geranyl Acetate	0.00	NA
alpha-Cedrene	0.03	NA
trans-Caryophyllene	0.18	NA
alpha-Humulene	0.05	NA
Valencene	0.00	NA
cis-Nerolidol	0.02	NA
trans-Nerolidol	0.00	NA
Guaiol	2.18	NA
(-)-Caryophyllene Oxide	0.32	NA
(+)-Cedrol	0.32	NA
(-)-alpha-Bisabolol	0.00	NA
Total Terpenes	3.65	NA



Chemist: EG

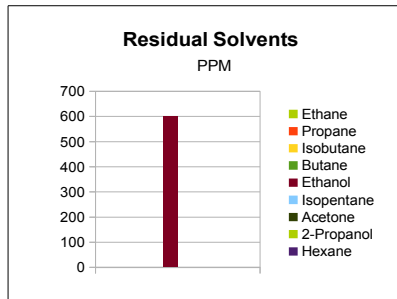
Sample Information		
Sample Identification	PCR 25%	
Laboratory Number	2017009445	
Batch Number	NA	
Matrix	Plant Oil	
Analyzed Date	10/04/17	
Extraction Date	10/04/17	
Cannabinoid (HPLC)	mg/mL	mg /Bottle
Compound		
CBD-V	15.99	NA
CBD-A	13.10	NA
CBG	0.00	NA
CBD	587.90	NA
THC-V	0.00	NA
CBN	0.00	NA
Delta 9-THC	0.00	NA
CBC	0.00	NA
THC-A	0.00	NA
Delta 8-THC	0.00	NA
Cannabinoids Total		
Max Active THC	0.00	NA
Max Active CBD	599.42	NA
T. Active Cannabinoids	603.89	NA
Total Cannabinoids	616.99	NA
Max Active Ratios		
NA :1 CBD to THC		
0.0 :1 THC to CBD		



Sample Image

Micro Visual: NOT TESTED
Microbial Plate: NOT TESTED
Percent Moisture Not Tested



RS (GCMS-HS)	PPM	RL
Compound		
Ethane	<20.0	20.0
Propane	<5.0	5.0
Isobutane	<5.0	5.0
Butane	<5.0	5.0
Ethanol	>600	5.0
Isopentane	<5.0	5.0
Acetone	<50.0	50.0
2-Propanol	<5.0	5.0
Hexane	<5.0	5.0
Heptane	<5.0	5.0



mL/bottle	NA
mg THC/bottle	NA
mg CBD/bottle	NA
(mg) total cannabinoids/bottle	NA

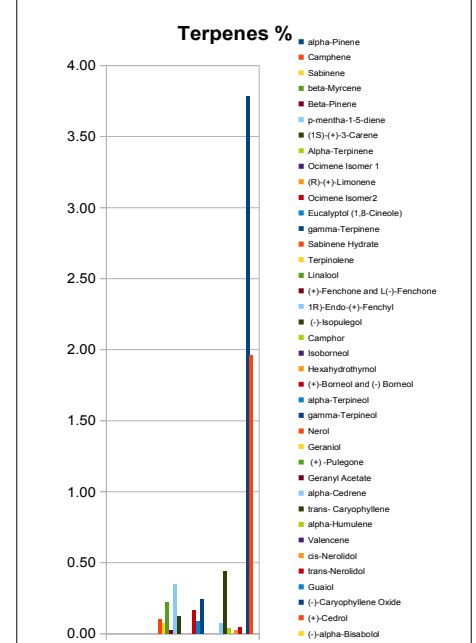
Metals	PPM	RL
Compound		
Mercury	0.003	0.001
Lead	<0.01	0.010
Arsenic	<0.01	0.010
Cadmium	<0.01	0.010

Pesticides	PPM	RL
Compound		
Quinoxifen	< 2.0	2.0
Myclobutanil	< 2.0	2.0
Azoxystrobin	< 1.0	1.0
Daminozide	< 1.0	1.0
Paclbutrazol	< 2.0	2.0
B-cyfluthrin	< 4.0	4.0

RL=Reporting Limit
NA=Not Applicable
NT=Not Tested

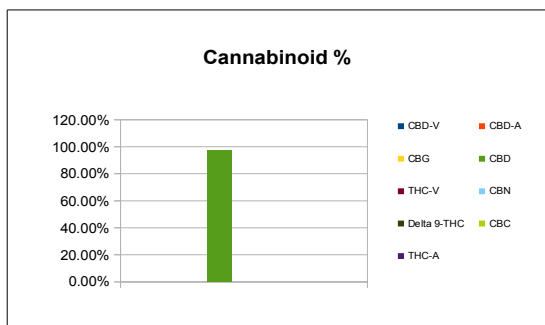



Terpene (GC-MS)	mg/mL	mg/Bottle
Compound		
alpha-Pinene	0.00	NA
Camphene	0.00	NA
Sabinene	0.00	NA
beta-Myrcene	0.00	NA
Beta-Pinene	0.00	NA
p-mentha-1-5-diene	0.00	NA
(1S)-(+)-3-Carene	0.00	NA
Alpha-Terpinene	0.00	NA
Ocimene Isomer 1	0.00	NA
(R)-(+)-Limonene	0.00	NA
Ocimene Isomer2	0.00	NA
Eucalyptol (1,8-Cineole)	0.00	NA
gamma-Terpinene	0.00	NA
Sabinene Hydrate	0.10	NA
Terpinolene	0.07	NA
Linalool	0.22	NA
(+)-Fenchone and L(-)-Fenchone	0.02	NA
1R)-Endo-(+)-Fenchyl	0.34	NA
(-)-Isopulegol	0.12	NA
Camphor	0.00	NA
Isoborneol	0.00	NA
Hexahydrothymol	0.00	NA
(+)-Borneol and (-) Borneol	0.17	NA
alpha-Terpineol	0.09	NA
gamma-Terpineol	0.24	NA
Nerol	0.00	NA
Geraniol	0.00	NA
(+)-Pulegone	0.00	NA
Geranyl Acetate	0.00	NA
alpha-Cedrene	0.08	NA
trans-Caryophyllene	0.44	NA
alpha-Humulene	0.04	NA
Valencene	0.00	NA
cis-Nerolidol	0.03	NA
trans-Nerolidol	0.05	NA
Guaiol	0.00	NA
(-)-Caryophyllene Oxide	3.78	NA
(+)-Cedrol	1.96	NA
(-)-alpha-Bisabolol	0.00	NA
Total Terpenes	7.76	NA



Chemist: EG

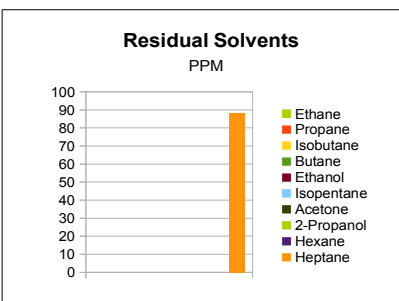
Sample Information		
Sample Identification	G.R. Isolate	
Laboratory Number	2017009446	
Batch Number	NA	
Matrix	Isolate	
Analyzed Date	10/04/17	
Extraction Date	10/04/17	
Cannabinoid (HPLC)	%	mg/g
Compound		
CBD-V	0.00%	0.00
CBD-A	0.00%	0.00
CBG	0.00%	0.00
CBD	97.42%	974.24
THC-V	0.00%	0.00
CBN	0.00%	0.00
Delta 9-THC	0.00%	0.00
CBC	0.00%	0.00
THC-A	0.00%	0.00
Delta 8-THC	0.00%	0.00
Cannabinoids Total		
Max Active THC	0.00%	0.00
Max Active CBD	97.42%	974.24
T. Active Cannabinoids	97.42%	974.24
Total Cannabinoids	97.42%	974.24
Max Active Ratios		
NA :1 CBD to THC		
0.0 :1 THC to CBD		



Sample Image	
	
Micro Visual:	NOT TESTED
Microbial Plate:	NOT TESTED
Percent Moisture	Not Tested



RS (GCMS-HS) Compound	PPM	RL
Ethane	<20.0	20.0
Propane	<5.0	5.0
Isobutane	<5.0	5.0
Butane	<5.0	5.0
Ethanol	<5.0	5.0
Isopentane	<5.0	5.0
Acetone	<50.0	50.0
2-Propanol	<5.0	5.0
Hexane	<5.0	5.0
Heptane	88.27	5.0



g/medible	NA
mg THC/medible	NA
mg CBD/medible	NA
(mg) total cannabinoids/medible	NA

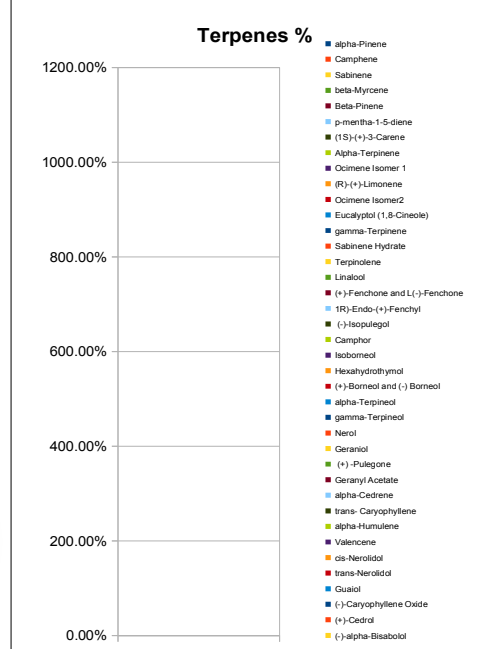
Metals	PPM	RL
Mercury	0.006	0.001
Lead	0.06	0.010
Arsenic	<0.01	0.010
Cadmium	<0.01	0.010

Pesticides	PPM	RL
Quinoxifen	< 2.0	2.0
Myclobutanil	< 2.0	2.0
Azoxystrobin	< 1.0	1.0
Daminozide	< 1.0	1.0
Paclbutrazol	< 2.0	2.0
B-cyfluthrin	< 4.0	4.0

RL=Reporting Limit
NA=Not Applicable
NT=Not Tested

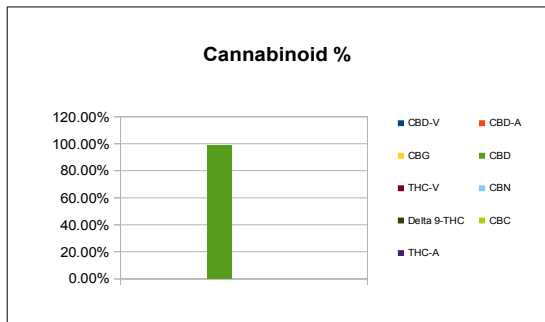



Terpene (GC-MS) Compound	%	mg/g
alpha-Pinene	NT	NT
Camphene	NT	NT
Sabinene	NT	NT
beta-Myrcene	NT	NT
Beta-Pinene	NT	NT
p-mentha-1-5-diene	NT	NT
(1S)-(+)-3-Carene	NT	NT
Alpha-Terpinene	NT	NT
Ocimene Isomer 1	NT	NT
(R)-(+)-Limonene	NT	NT
Ocimene Isomer2	NT	NT
Eucalyptol (1,8-Cineole)	NT	NT
gamma-Terpinene	NT	NT
Sabinene Hydrate	NT	NT
Terpinolene	NT	NT
Linalool	NT	NT
(+)-Fenchone and L(-)-Fenchone	NT	NT
1R)-Endo-(+)-Fenchyl	NT	NT
(-)-Isopulegol	NT	NT
Camphor	NT	NT
Isoborneol	NT	NT
Hexahydrothymol	NT	NT
(+)-Borneol and (-) Borneol	NT	NT
alpha-Terpineol	NT	NT
gamma-Terpineol	NT	NT
Nerol	NT	NT
Geraniol	NT	NT
(+) -Pulegone	NT	NT
Geranyl Acetate	NT	NT
alpha-Cedrene	NT	NT
trans- Caryophyllene	NT	NT
alpha-Humulene	NT	NT
Valencene	NT	NT
cis-Nerolidol	NT	NT
trans-Nerolidol	NT	NT
Guaiol	NT	NT
(-)-Caryophyllene Oxide	NT	NT
(+)-Cedrol	NT	NT
(-)-alpha-Bisabolol	NT	NT
Total Terpenes	NT	NT



Chemist: EG

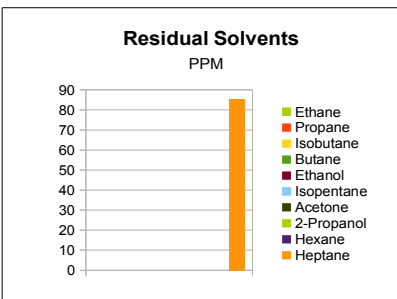
Sample Information		
Sample Identification	G.R. Isolate	
Laboratory Number	2017009446 DUP	
Batch Number	NA	
Matrix	Isolate	
Analyzed Date	10/04/17	
Extraction Date	10/04/17	
Cannabinoid (HPLC)	%	mg/g
Compound		
CBD-V	0.00%	0.00
CBD-A	0.00%	0.00
CBG	0.00%	0.00
CBD	98.79%	987.93
THC-V	0.00%	0.00
CBN	0.00%	0.00
Delta 9-THC	0.00%	0.00
CBC	0.00%	0.00
THC-A	0.00%	0.00
Delta 8-THC	0.00%	0.00
Cannabinoids Total		
Max Active THC	0.00%	0.00
Max Active CBD	98.79%	987.93
T. Active Cannabinoids	98.79%	987.93
Total Cannabinoids	98.79%	987.93
Max Active Ratios		
NA :1 CBD to THC		
0.0 :1 THC to CBD		



Sample Image	
	
Micro Visual:	NOT TESTED
Microbial Plate:	NOT TESTED
Percent Moisture	Not Tested



RS (GCMS-HS) Compound	PPM	RL
Ethane	<20.0	20.0
Propane	<5.0	5.0
Isobutane	<5.0	5.0
Butane	<5.0	5.0
Ethanol	<5.0	5.0
Isopentane	<5.0	5.0
Acetone	<50.0	50.0
2-Propanol	<5.0	5.0
Hexane	<5.0	5.0
Heptane	85.61	5.0



g/medible	NA
mg THC/medible	NA
mg CBD/medible	NA
(mg) total cannabinoids/medible	NA

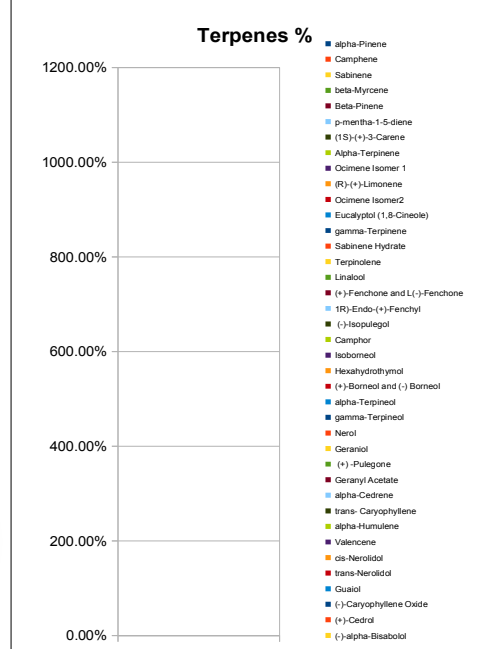
Metals	PPM	RL
Mercury	NA	0.001
Lead	NA	0.010
Arsenic	NA	0.010
Cadmium	NA	0.010

Pesticides	PPM	RL
Quinoxifen	NA	2.0
Myclobutanil	NA	2.0
Azoxystrobin	NA	1.0
Daminozide	NA	1.0
Paclbutrazol	NA	2.0
B-cyfluthrin	NA	4.0

RL=Reporting Limit
NA=Not Applicable
NT=Not Tested



Terpene (GC-MS) Compound	%	mg/g
alpha-Pinene	NT	NT
Camphene	NT	NT
Sabinene	NT	NT
beta-Myrcene	NT	NT
Beta-Pinene	NT	NT
p-mentha-1-5-diene	NT	NT
(1S)-(+)-3-Carene	NT	NT
Alpha-Terpinene	NT	NT
Ocimene Isomer 1	NT	NT
(R)-(+)-Limonene	NT	NT
Ocimene Isomer2	NT	NT
Eucalyptol (1,8-Cineole)	NT	NT
gamma-Terpinene	NT	NT
Sabinene Hydrate	NT	NT
Terpinolene	NT	NT
Linalool	NT	NT
(+)-Fenchone and L(-)-Fenchone	NT	NT
1R)-Endo-(+)-Fenchyl	NT	NT
(-)-Isopulegol	NT	NT
Camphor	NT	NT
Isoborneol	NT	NT
Hexahydrothymol	NT	NT
(+)-Borneol and (-) Borneol	NT	NT
alpha-Terpineol	NT	NT
gamma-Terpineol	NT	NT
Nerol	NT	NT
Geraniol	NT	NT
(+)-Pulegone	NT	NT
Geranyl Acetate	NT	NT
alpha-Cedrene	NT	NT
trans-Caryophyllene	NT	NT
alpha-Humulene	NT	NT
Valencene	NT	NT
cis-Nerolidol	NT	NT
trans-Nerolidol	NT	NT
Guaiol	NT	NT
(-)-Caryophyllene Oxide	NT	NT
(+)-Cedrol	NT	NT
(-)-alpha-Bisabolol	NT	NT
Total Terpenes	NT	NT

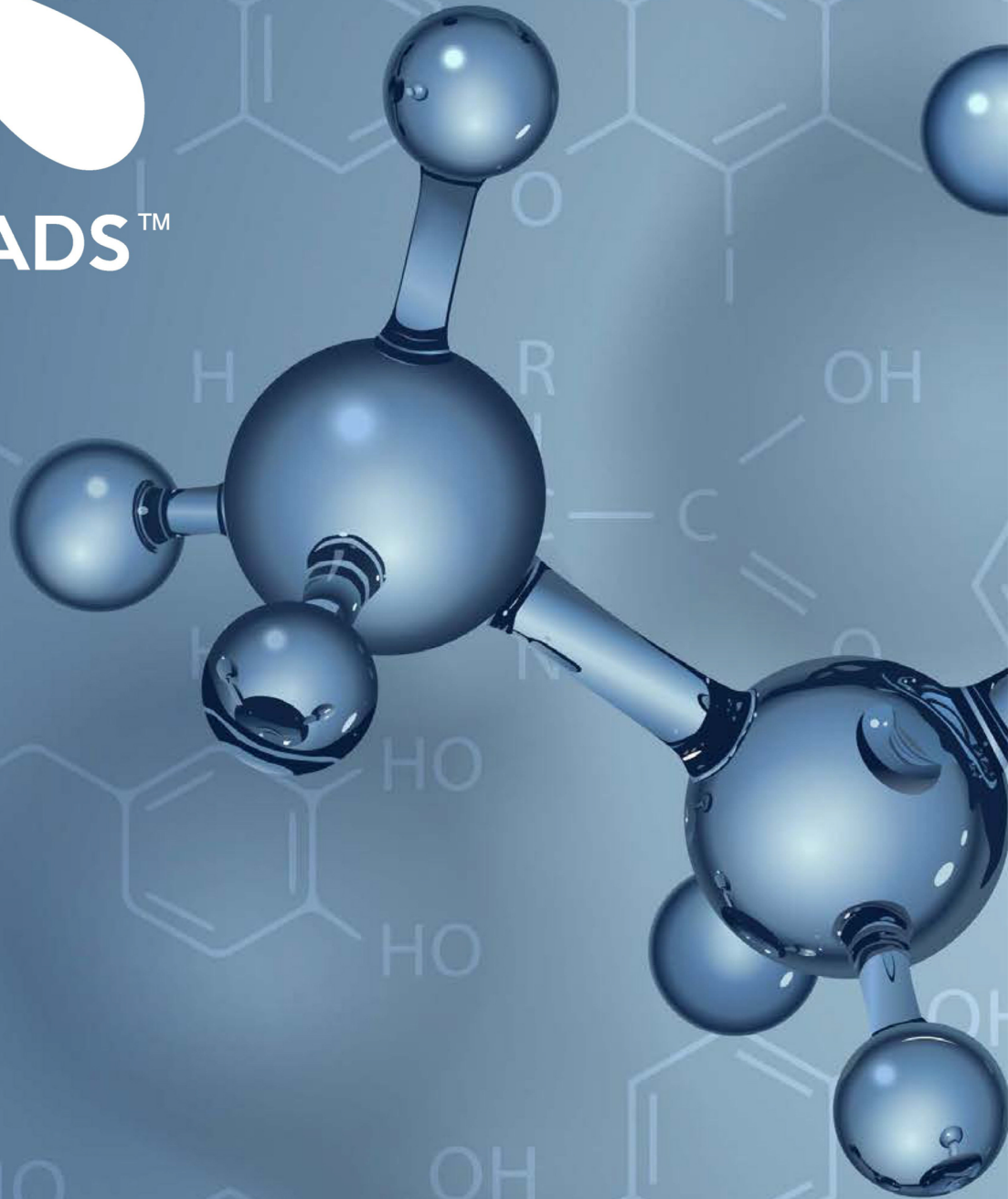


Chemist: EG



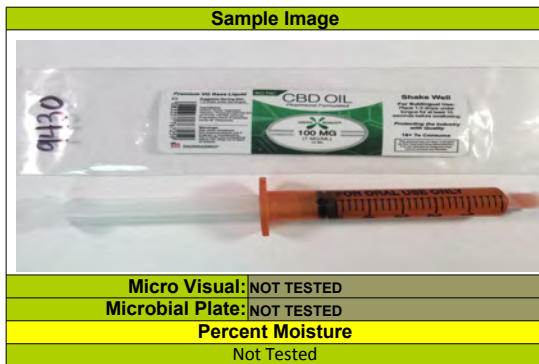
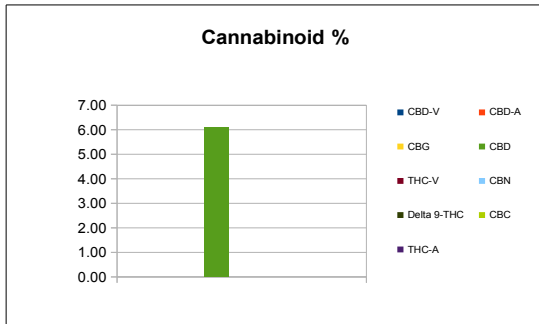
GREEN ROADS™

CBD OILS

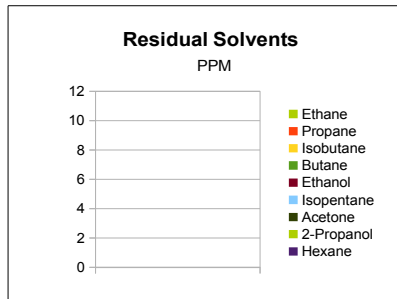


**LAB SHEET PACKET
SETTING THE INDUSTRY STANDARD**

Sample Information		
Sample Identification	100mg / 15ml	
Laboratory Number	2017009430	
Batch Number	NA	
Matrix	Tincture	
Analyzed Date	10/04/17	
Extraction Date	10/04/17	
Cannabinoid (HPLC)	mg/mL	mg /Bottle
Compound		
CBD-V	0.00	0.00
CBD-A	0.00	0.00
CBG	0.00	0.00
CBD	6.08	91.17
THC-V	0.00	0.00
CBN	0.00	0.00
Delta 9-THC	0.00	0.00
CBC	0.00	0.00
THC-A	0.00	0.00
Delta 8-THC	0.00	0.00
Cannabinoids Total		
Max Active THC	0.00	0.00
Max Active CBD	6.08	91.17
T. Active Cannabinoids	6.08	91.17
Total Cannabinoids	6.08	91.17
Max Active Ratios		
NA :1 CBD to THC		
0.0 :1 THC to CBD		



RS (GCMS-HS)	PPM	RL
Compound		
Ethane	NT	20.0
Propane	NT	5.0
Isobutane	NT	5.0
Butane	NT	5.0
Ethanol	NT	5.0
Isopentane	NT	5.0
Acetone	NT	50.0
2-Propanol	NT	5.0
Hexane	NT	5.0
Heptane	NT	5.0



mL/bottle	15
mg THC/bottle	0
mg CBD/bottle	91.17
(mg) total cannabinoids/bottle	91.17

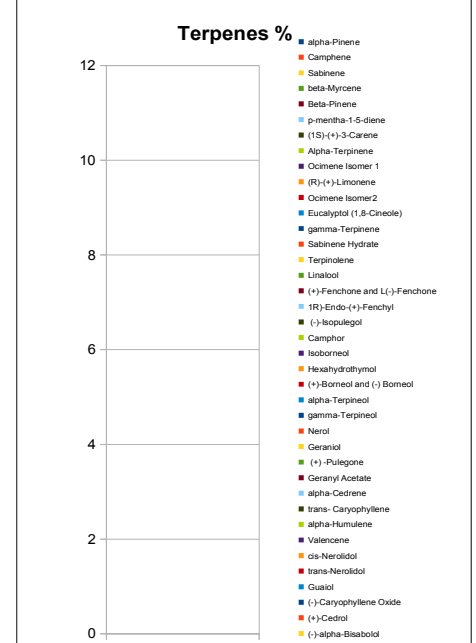
Metals	PPM	RL
Compound		
Mercury	NT	0.001
Lead	NT	0.020
Arsenic	NT	0.020
Cadmium	NT	0.010

Pesticides	PPM	RL
Compound		
Quinoxifen	NT	2.0
Myclobutanil	NT	2.0
Azoxystrobin	NT	1.0
Daminozide	NT	1.0
Paclbutrazol	NT	2.0
B-cyfluthrin	NT	4.0

RL=Reporting Limit
NA=Not Applicable
NT=Not Tested

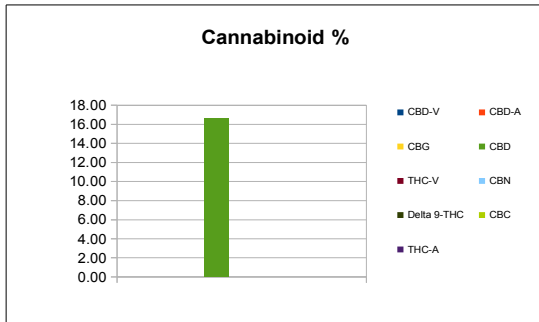



Terpene (GC-MS)	mg/mL	mg/Bottle
Compound		
alpha-Pinene	NT	NT
Camphene	NT	NT
Sabinene	NT	NT
beta-Myrcene	NT	NT
Beta-Pinene	NT	NT
p-mentha-1,5-diene	NT	NT
(1S)-(+)-3-Carene	NT	NT
Alpha-Terpinene	NT	NT
Ocimene Isomer 1	NT	NT
(R)-(+)-Limonene	NT	NT
Ocimene Isomer2	NT	NT
Eucalyptol (1,8-Cineole)	NT	NT
gamma-Terpinene	NT	NT
Sabinene Hydrate	NT	NT
Terpinolene	NT	NT
Linalool	NT	NT
(+)-Fenchone and L(-)-Fenchone	NT	NT
1R)-Endo-(+)-Fenchyl	NT	NT
(-)-Isopulegol	NT	NT
Camphor	NT	NT
Isoborneol	NT	NT
Hexahydrothymol	NT	NT
(+)-Borneol and (-) Borneol	NT	NT
alpha-Terpineol	NT	NT
gamma-Terpineol	NT	NT
Nerol	NT	NT
Geraniol	NT	NT
(+)-Pulegone	NT	NT
Geranyl Acetate	NT	NT
alpha-Cedrene	NT	NT
trans-Caryophyllene	NT	NT
alpha-Humulene	NT	NT
Valencene	NT	NT
cis-Nerolidol	NT	NT
trans-Nerolidol	NT	NT
Guaiol	NT	NT
(-)-Caryophyllene Oxide	NT	NT
(+)-Cedrol	NT	NT
(-)-alpha-Bisabolol	NT	NT
Total Terpenes	NT	NT



Chemist: EG

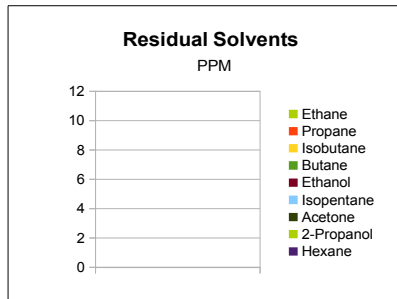
Sample Information		
Sample Identification	250mg / 15ml	
Laboratory Number	2017009431	
Batch Number	NA	
Matrix	Tincture	
Analyzed Date	10/04/17	
Extraction Date	10/04/17	
Cannabinoid (HPLC)	mg/mL	mg /Bottle
Compound		
CBD-V	0.00	0.00
CBD-A	0.00	0.00
CBG	0.00	0.00
CBD	16.63	249.40
THC-V	0.00	0.00
CBN	0.00	0.00
Delta 9-THC	0.00	0.00
CBC	0.00	0.00
THC-A	0.00	0.00
Delta 8-THC	0.00	0.00
Cannabinoids Total		
Max Active THC	0.00	0.00
Max Active CBD	16.63	249.40
T. Active Cannabinoids	16.63	249.40
Total Cannabinoids	16.63	249.40
Max Active Ratios		
NA :1 CBD to THC		
0.0 :1 THC to CBD		



Sample Image	
	
Micro Visual:	NOT TESTED
Microbial Plate:	NOT TESTED
Percent Moisture	Not Tested



RS (GCMS-HS)	PPM	RL
Compound		
Ethane	NT	20.0
Propane	NT	5.0
Isobutane	NT	5.0
Butane	NT	5.0
Ethanol	NT	5.0
Isopentane	NT	5.0
Acetone	NT	50.0
2-Propanol	NT	5.0
Hexane	NT	5.0
Heptane	NT	5.0



mL/bottle	15
mg THC/bottle	0
mg CBD/bottle	249.4
(mg) total cannabinoids/bottle	249.4

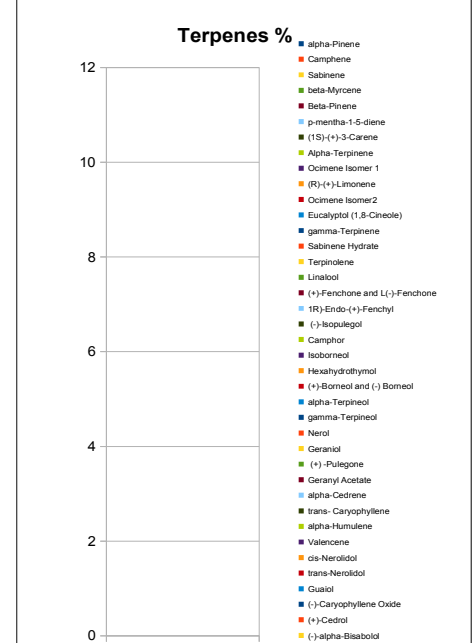
Metals	PPM	RL
Compound		
Mercury	NT	0.001
Lead	NT	0.020
Arsenic	NT	0.020
Cadmium	NT	0.010

Pesticides	PPM	RL
Compound		
Quinoxifen	NT	2.0
Myclobutanil	NT	2.0
Azoxystrobin	NT	1.0
Daminozide	NT	1.0
Paclitrazol	NT	2.0
B-cyfluthrin	NT	4.0

RL=Reporting Limit
NA=Not Applicable
NT=Not Tested

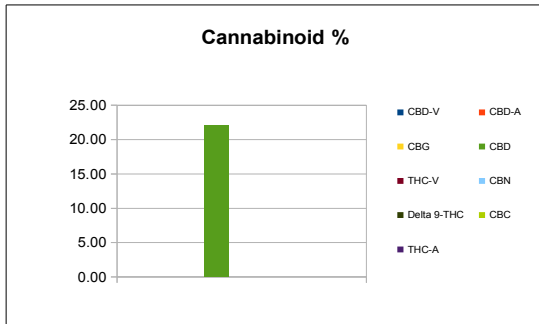



Terpene (GC-MS)	mg/mL	mg/Bottle
Compound		
alpha-Pinene	NT	NT
Camphene	NT	NT
Sabinene	NT	NT
beta-Myrcene	NT	NT
Beta-Pinene	NT	NT
p-mentha-1-5-diene	NT	NT
(1S)-(+)-3-Carene	NT	NT
Alpha-Terpinene	NT	NT
Ocimene Isomer 1	NT	NT
(R)-(+)-Limonene	NT	NT
Ocimene Isomer2	NT	NT
Eucalyptol (1,8-Cineole)	NT	NT
gamma-Terpinene	NT	NT
Sabinene Hydrate	NT	NT
Terpinolene	NT	NT
Linalool	NT	NT
(+)-Fenchone and L(-)-Fenchone	NT	NT
1R)-Endo-(+)-Fenchyl	NT	NT
(-)-Isopulegol	NT	NT
Camphor	NT	NT
Isoborneol	NT	NT
Hexahydrothymol	NT	NT
(+)-Borneol and (-) Borneol	NT	NT
alpha-Terpineol	NT	NT
gamma-Terpineol	NT	NT
Nerol	NT	NT
Geraniol	NT	NT
(+)-Pulegone	NT	NT
Geranyl Acetate	NT	NT
alpha-Cedrene	NT	NT
trans-Caryophyllene	NT	NT
alpha-Humulene	NT	NT
Valencene	NT	NT
cis-Nerolidol	NT	NT
trans-Nerolidol	NT	NT
Guaiol	NT	NT
(-)-Caryophyllene Oxide	NT	NT
(+)-Cedrol	NT	NT
(-)-alpha-Bisabolol	NT	NT
Total Terpenes	NT	NT



Chemist: EG

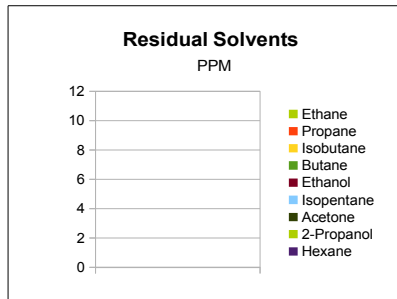
Sample Information		
Sample Identification	350mg / 15ml	
Laboratory Number	2017009432	
Batch Number	NA	
Matrix	Tincture	
Analyzed Date	10/04/17	
Extraction Date	10/04/17	
Cannabinoid (HPLC)	mg/mL	mg /Bottle
Compound		
CBD-V	0.00	0.00
CBD-A	0.00	0.00
CBG	0.00	0.00
CBD	22.02	330.26
THC-V	0.00	0.00
CBN	0.00	0.00
Delta 9-THC	0.00	0.00
CBC	0.00	0.00
THC-A	0.00	0.00
Delta 8-THC	0.00	0.00
Cannabinoids Total		
Max Active THC	0.00	0.00
Max Active CBD	22.02	330.26
T. Active Cannabinoids	22.02	330.26
Total Cannabinoids	22.02	330.26
Max Active Ratios		
NA :1 CBD to THC		
0.0 :1 THC to CBD		



Sample Image

Micro Visual: NOT TESTED
Microbial Plate: NOT TESTED
Percent Moisture Not Tested



RS (GCMS-HS)	PPM	RL
Compound		
Ethane	NT	20.0
Propane	NT	5.0
Isobutane	NT	5.0
Butane	NT	5.0
Ethanol	NT	5.0
Isopentane	NT	5.0
Acetone	NT	50.0
2-Propanol	NT	5.0
Hexane	NT	5.0
Heptane	NT	5.0



mL/bottle	15
mg THC/bottle	0
mg CBD/bottle	330.26
(mg) total cannabinoids/bottle	330.26

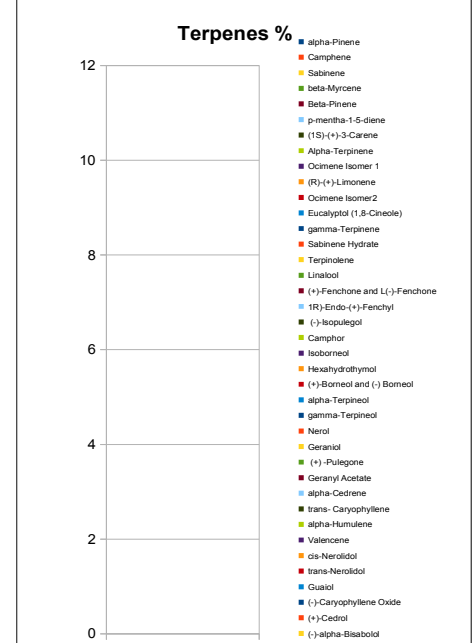
Metals	PPM	RL
Compound		
Mercury	NT	0.001
Lead	NT	0.020
Arsenic	NT	0.020
Cadmium	NT	0.010

Pesticides	PPM	RL
Compound		
Quinoxifen	NT	2.0
Myclobutanil	NT	2.0
Azoxystrobin	NT	1.0
Daminozide	NT	1.0
Paclbutrazol	NT	2.0
B-cyfluthrin	NT	4.0

RL=Reporting Limit
NA=Not Applicable
NT=Not Tested

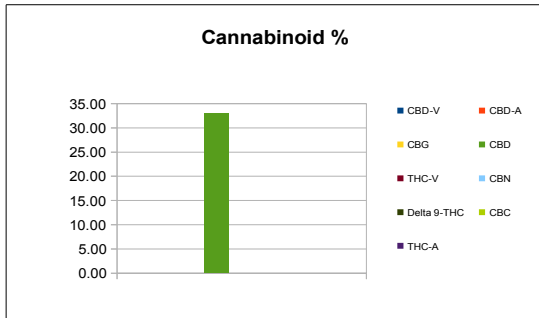



Terpene (GC-MS)	mg/mL	mg/Bottle
Compound		
alpha-Pinene	NT	NT
Camphene	NT	NT
Sabinene	NT	NT
beta-Myrcene	NT	NT
Beta-Pinene	NT	NT
p-mentha-1-5-diene	NT	NT
(1S)-(+)-3-Carene	NT	NT
Alpha-Terpinene	NT	NT
Ocimene Isomer 1	NT	NT
(R)-(+)-Limonene	NT	NT
Ocimene Isomer2	NT	NT
Eucalyptol (1,8-Cineole)	NT	NT
gamma-Terpinene	NT	NT
Sabinene Hydrate	NT	NT
Terpinolene	NT	NT
Linalool	NT	NT
(+)-Fenchone and L(-)-Fenchone	NT	NT
1R)-Endo-(+)-Fenchyl	NT	NT
(-)-Isopulegol	NT	NT
Camphor	NT	NT
Isoborneol	NT	NT
Hexahydrothymol	NT	NT
(+)-Borneol and (-) Borneol	NT	NT
alpha-Terpineol	NT	NT
gamma-Terpineol	NT	NT
Nerol	NT	NT
Geraniol	NT	NT
(+)-Pulegone	NT	NT
Geranyl Acetate	NT	NT
alpha-Cedrene	NT	NT
trans- Caryophyllene	NT	NT
alpha-Humulene	NT	NT
Valencene	NT	NT
cis-Nerolidol	NT	NT
trans-Nerolidol	NT	NT
Guaiol	NT	NT
(-)-Caryophyllene Oxide	NT	NT
(+)-Cedrol	NT	NT
(-)-alpha-Bisabolol	NT	NT
Total Terpenes	NT	NT



Chemist: EG

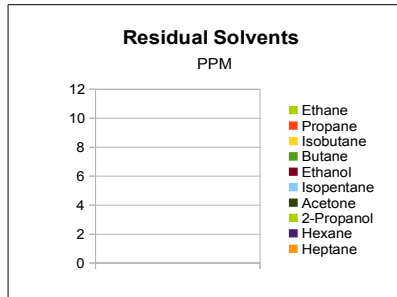
Sample Information		
Sample Identification	550mg / 15ml	
Laboratory Number	2017009433	
Batch Number	NA	
Matrix	Tincture	
Analyzed Date	10/04/17	
Extraction Date	10/04/17	
Cannabinoid (HPLC)	mg/mL	mg /Bottle
Compound		
CBD-V	0.00	0.00
CBD-A	0.00	0.00
CBG	0.00	0.00
CBD	32.94	494.07
THC-V	0.00	0.00
CBN	0.00	0.00
Delta 9-THC	0.00	0.00
CBC	0.00	0.00
THC-A	0.00	0.00
Delta 8-THC	0.00	0.00
Cannabinoids Total		
Max Active THC	0.00	0.00
Max Active CBD	32.94	494.07
T. Active Cannabinoids	32.94	494.07
Total Cannabinoids	32.94	494.07
Max Active Ratios		
NA :1 CBD to THC		
0.0 :1 THC to CBD		



Sample Image

Micro Visual: NOT TESTED
Microbial Plate: NOT TESTED
Percent Moisture: Not Tested



RS (GCMS-HS)	PPM	RL
Compound		
Ethane	NT	20.0
Propane	NT	5.0
Isobutane	NT	5.0
Butane	NT	5.0
Ethanol	NT	5.0
Isopentane	NT	5.0
Acetone	NT	50.0
2-Propanol	NT	5.0
Hexane	NT	5.0
Heptane	NT	5.0



mL/bottle	15
mg THC/bottle	0
mg CBD/bottle	494.07
(mg) total cannabinoids/bottle	494.07

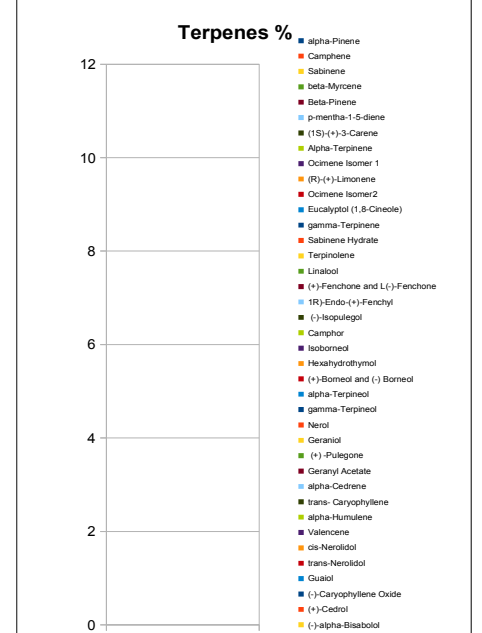
Metals	PPM	RL
Compound		
Mercury	NT	0.001
Lead	NT	0.020
Arsenic	NT	0.020
Cadmium	NT	0.010

Pesticides	PPM	RL
Compound		
Quinoxifen	NT	2.0
Myclobutanil	NT	2.0
Azoxystrobin	NT	1.0
Daminozide	NT	1.0
Paclbutrazol	NT	2.0
B-cyfluthrin	NT	4.0

RL=Reporting Limit
NA=Not Applicable
NT=Not Tested

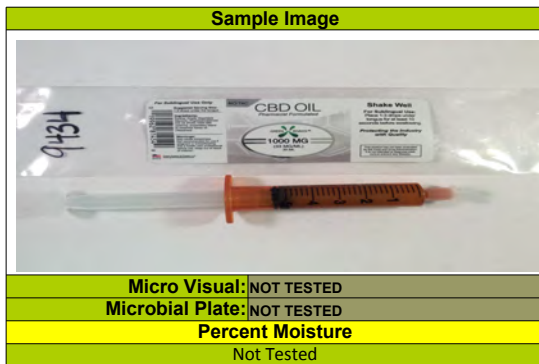
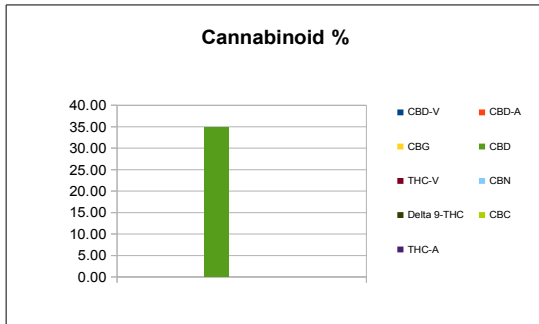


Terpene (GC-MS)	mg/mL	mg/Bottle
Compound		
alpha-Pinene	NT	NT
Camphene	NT	NT
Sabinene	NT	NT
beta-Myrcene	NT	NT
Beta-Pinene	NT	NT
p-mentha-1-5-diene	NT	NT
(1S)-(+)-3-Carene	NT	NT
Alpha-Terpinene	NT	NT
Ocimene Isomer 1	NT	NT
(R)-(+)-Limonene	NT	NT
Ocimene Isomer2	NT	NT
Eucalyptol (1,8-Cineole)	NT	NT
gamma-Terpinene	NT	NT
Sabinene Hydrate	NT	NT
Terpinolene	NT	NT
Linalool	NT	NT
(+)-Fenchone and L(-)-Fenchone	NT	NT
1R)-Endo-(+)-Fenchyl	NT	NT
(-)-Isopulegol	NT	NT
Camphor	NT	NT
Isoborneol	NT	NT
Hexahydrothymol	NT	NT
(+)-Borneol and (-) Borneol	NT	NT
alpha-Terpineol	NT	NT
gamma-Terpineol	NT	NT
Nerol	NT	NT
Geraniol	NT	NT
(+)-Pulegone	NT	NT
Geranyl Acetate	NT	NT
alpha-Cedrene	NT	NT
trans- Caryophyllene	NT	NT
alpha-Humulene	NT	NT
Valencene	NT	NT
cis-Nerolidol	NT	NT
trans-Nerolidol	NT	NT
Guaiol	NT	NT
(-)-Caryophyllene Oxide	NT	NT
(+)-Cedrol	NT	NT
(-)-alpha-Bisabolol	NT	NT
Total Terpenes	NT	NT

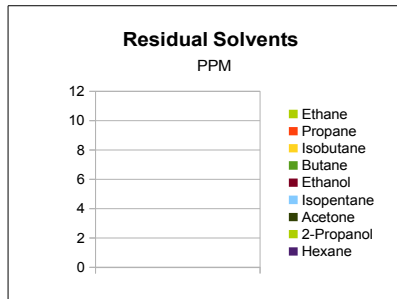


Chemist: EG

Sample Information		
Sample Identification	1000mg / 30ml	
Laboratory Number	2017009434	
Batch Number	NA	
Matrix	Tincture	
Analyzed Date	10/04/17	
Extraction Date	10/04/17	
Cannabinoid (HPLC)	mg/mL	mg /Bottle
Compound		
CBD-V	0.00	0.00
CBD-A	0.00	0.00
CBG	0.00	0.00
CBD	34.79	1043.70
THC-V	0.00	0.00
CBN	0.00	0.00
Delta 9-THC	0.00	0.00
CBC	0.00	0.00
THC-A	0.00	0.00
Delta 8-THC	0.00	0.00
Cannabinoids Total		
Max Active THC	0.00	0.00
Max Active CBD	34.79	1043.70
T. Active Cannabinoids	34.79	1043.70
Total Cannabinoids	34.79	1043.70
Max Active Ratios		
NA :1 CBD to THC		
0.0 :1 THC to CBD		



RS (GCMS-HS)	PPM	RL
Compound		
Ethane	NT	20.0
Propane	NT	5.0
Isobutane	NT	5.0
Butane	NT	5.0
Ethanol	NT	5.0
Isopentane	NT	5.0
Acetone	NT	50.0
2-Propanol	NT	5.0
Hexane	NT	5.0
Heptane	NT	5.0



mL/bottle	30
mg THC/bottle	0
mg CBD/bottle	1043.7
(mg) total cannabinoids/bottle	1043.7

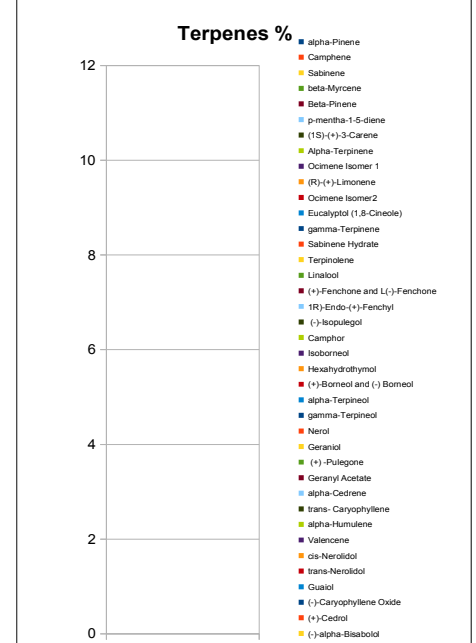
Metals	PPM	RL
Compound		
Mercury	NT	0.001
Lead	NT	0.020
Arsenic	NT	0.020
Cadmium	NT	0.010

Pesticides	PPM	RL
Compound		
Quinoxifen	NT	2.0
Myclobutanil	NT	2.0
Azoxystrobin	NT	1.0
Daminozide	NT	1.0
Paclbutrazol	NT	2.0
B-cyfluthrin	NT	4.0

RL=Reporting Limit
NA=Not Applicable
NT=Not Tested

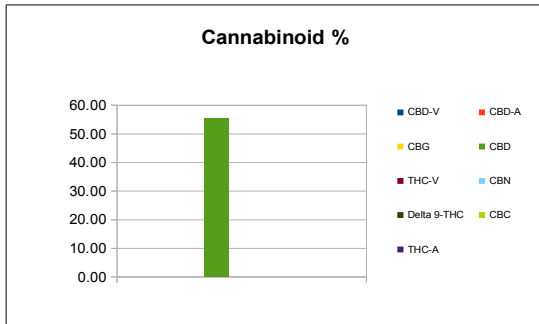



Terpene (GC-MS)	mg/mL	mg/Bottle
Compound		
alpha-Pinene	NT	NT
Camphene	NT	NT
Sabinene	NT	NT
beta-Myrcene	NT	NT
Beta-Pinene	NT	NT
p-mentha-1-5-diene	NT	NT
(1S)-(+)-3-Carene	NT	NT
Alpha-Terpinene	NT	NT
Ocimene Isomer 1	NT	NT
(R)-(+)-Limonene	NT	NT
Ocimene Isomer2	NT	NT
Eucalyptol (1,8-Cineole)	NT	NT
gamma-Terpinene	NT	NT
Sabinene Hydrate	NT	NT
Terpinolene	NT	NT
Linalool	NT	NT
(+)-Fenchone and L(-)-Fenchone	NT	NT
1R)-Endo-(+)-Fenchyl	NT	NT
(-)-Isopulegol	NT	NT
Camphor	NT	NT
Isoborneol	NT	NT
Hexahydrothymol	NT	NT
(+)-Borneol and (-) Borneol	NT	NT
alpha-Terpineol	NT	NT
gamma-Terpineol	NT	NT
Nerol	NT	NT
Geraniol	NT	NT
(+)-Pulegone	NT	NT
Geranyl Acetate	NT	NT
alpha-Cedrene	NT	NT
trans-Caryophyllene	NT	NT
alpha-Humulene	NT	NT
Valencene	NT	NT
cis-Nerolidol	NT	NT
trans-Nerolidol	NT	NT
Guaiol	NT	NT
(-)-Caryophyllene Oxide	NT	NT
(+)-Cedrol	NT	NT
(-)-alpha-Bisabolol	NT	NT
Total Terpenes	NT	NT



Chemist: EG

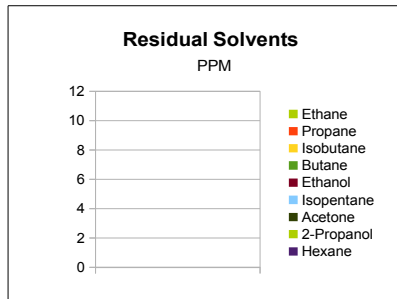
Sample Information		
Sample Identification	1500mg / 30ml	
Laboratory Number	2017009435	
Batch Number	NA	
Matrix	Tincture	
Analyzed Date	10/04/17	
Extraction Date	10/04/17	
Cannabinoid (HPLC)	mg/mL	mg /Bottle
CBD-V	0.00	0.00
CBD-A	0.00	0.00
CBG	0.00	0.00
CBD	55.46	1663.69
THC-V	0.00	0.00
CBN	0.00	0.00
Delta 9-THC	0.00	0.00
CBC	0.00	0.00
THC-A	0.00	0.00
Delta 8-THC	0.00	0.00
Cannabinoids Total		
Max Active THC	0.00	0.00
Max Active CBD	55.46	1663.69
T. Active Cannabinoids	55.46	1663.69
Total Cannabinoids	55.46	1663.69
Max Active Ratios		
NA :1 CBD to THC		
0.0 :1 THC to CBD		



Sample Image	
	
Micro Visual:	NOT TESTED
Microbial Plate:	NOT TESTED
Percent Moisture	Not Tested



RS (GCMS-HS) Compound	PPM	RL
Ethane	NT	20.0
Propane	NT	5.0
Isobutane	NT	5.0
Butane	NT	5.0
Ethanol	NT	5.0
Isopentane	NT	5.0
Acetone	NT	50.0
2-Propanol	NT	5.0
Hexane	NT	5.0
Heptane	NT	5.0



mL/bottle	30
mg THC/bottle	0
mg CBD/bottle	1663.69
(mg) total cannabinoids/bottle	1663.69

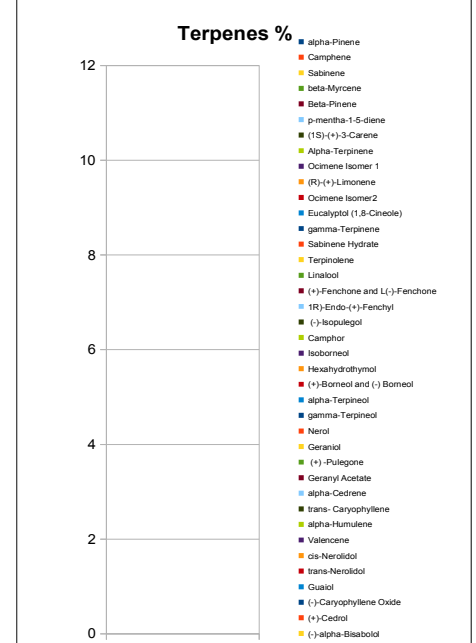
Metals Compound	PPM	RL
Mercury	NT	0.001
Lead	NT	0.020
Arsenic	NT	0.020
Cadmium	NT	0.010

Pesticides Compound	PPM	RL
Quinoxifen	NT	2.0
Myclobutanil	NT	2.0
Azoxystrobin	NT	1.0
Daminozide	NT	1.0
Paclbutrazol	NT	2.0
B-cyfluthrin	NT	4.0

RL=Reporting Limit
NA=Not Applicable
NT=Not Tested



Terpene (GC-MS) Compound	mg/mL	mg/Bottle
alpha-Pinene	NT	NT
Camphene	NT	NT
Sabinene	NT	NT
beta-Myrcene	NT	NT
Beta-Pinene	NT	NT
p-mentha-1-5-diene	NT	NT
(1S)-(+)-3-Carene	NT	NT
Alpha-Terpinene	NT	NT
Ocimene Isomer 1	NT	NT
(R)-(+)-Limonene	NT	NT
Ocimene Isomer2	NT	NT
Eucalyptol (1,8-Cineole)	NT	NT
gamma-Terpinene	NT	NT
Sabinene Hydrate	NT	NT
Terpinolene	NT	NT
Linalool	NT	NT
(+)-Fenchone and L(-)-Fenchone	NT	NT
1R)-Endo-(+)-Fenchyl	NT	NT
(-)-Isopulegol	NT	NT
Camphor	NT	NT
Isoborneol	NT	NT
Hexahydrothymol	NT	NT
(+)-Borneol and (-) Borneol	NT	NT
alpha-Terpineol	NT	NT
gamma-Terpineol	NT	NT
Nerol	NT	NT
Geraniol	NT	NT
(+)-Pulegone	NT	NT
Geranyl Acetate	NT	NT
alpha-Cedrene	NT	NT
trans-Caryophyllene	NT	NT
alpha-Humulene	NT	NT
Valencene	NT	NT
cis-Nerolidol	NT	NT
trans-Nerolidol	NT	NT
Guaiol	NT	NT
(-)-Caryophyllene Oxide	NT	NT
(+)-Cedrol	NT	NT
(-)-alpha-Bisabolol	NT	NT
Total Terpenes	NT	NT

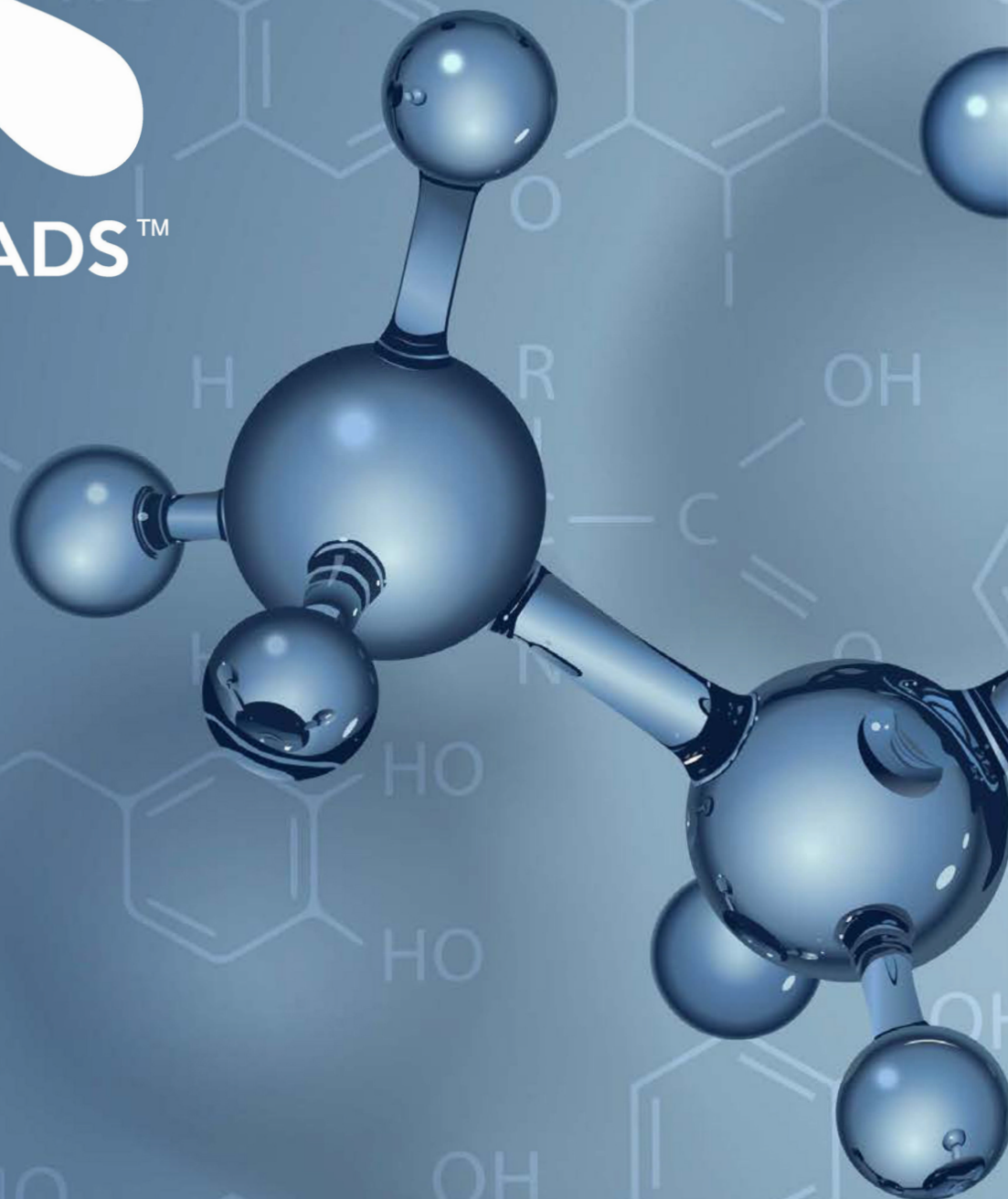


Chemist: EG



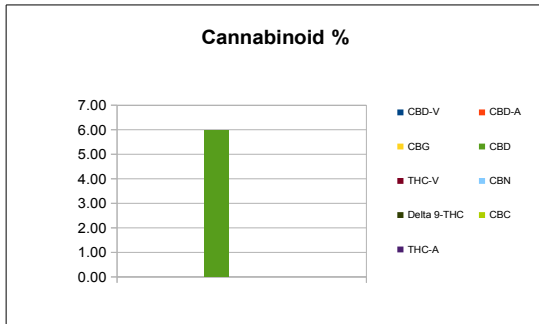
GREEN ROADS™


TERPENES



**LAB SHEET PACKET
SETTING THE INDUSTRY STANDARD**

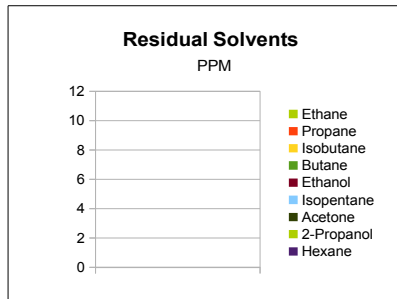
Sample Information		
Sample Identification	Org. Terp 100mg / 15ml	
Laboratory Number	2017009436	
Batch Number	NA	
Matrix	Tincture	
Analyzed Date	10/04/17	
Extraction Date	10/04/17	
Cannabinoid (HPLC)	mg/mL	mg /Bottle
CBD-V	0.00	0.00
CBD-A	0.00	0.00
CBG	0.00	0.00
CBD	5.98	89.69
THC-V	0.00	0.00
CBN	0.00	0.00
Delta 9-THC	0.00	0.00
CBC	0.00	0.00
THC-A	0.00	0.00
Delta 8-THC	0.00	0.00
Cannabinoids Total		
Max Active THC	0.00	0.00
Max Active CBD	5.98	89.69
T. Active Cannabinoids	5.98	89.69
Total Cannabinoids	5.98	89.69
Max Active Ratios		
NA :1 CBD to THC		
0.0 :1 THC to CBD		



Sample Image	
	
Micro Visual:	NOT TESTED
Microbial Plate:	NOT TESTED
Percent Moisture	Not Tested



RS (GCMS-HS) Compound	PPM	RL
Ethane	NT	20.0
Propane	NT	5.0
Isobutane	NT	5.0
Butane	NT	5.0
Ethanol	NT	5.0
Isopentane	NT	5.0
Acetone	NT	50.0
2-Propanol	NT	5.0
Hexane	NT	5.0
Heptane	NT	5.0



mL/bottle	15
mg THC/bottle	0
mg CBD/bottle	89.69
(mg) total cannabinoids/bottle	89.69

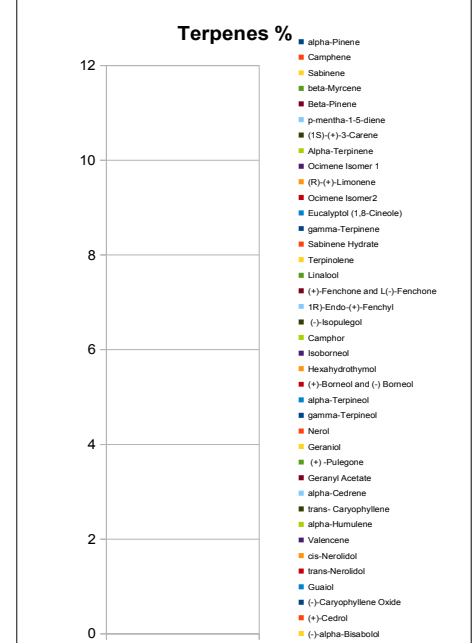
Metals Compound	PPM	RL
Mercury	NT	0.001
Lead	NT	0.020
Arsenic	NT	0.020
Cadmium	NT	0.010

Pesticides Compound	PPM	RL
Quinoxifen	NT	2.0
Myclobutanil	NT	2.0
Azoxystrobin	NT	1.0
Daminozide	NT	1.0
Paclbutrazol	NT	2.0
B-cyfluthrin	NT	4.0

RL=Reporting Limit
NA=Not Applicable
NT=Not Tested

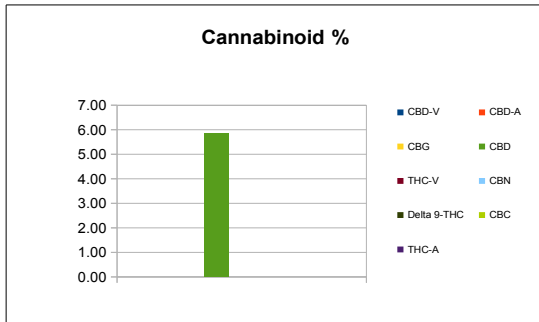



Terpene (GC-MS) Compound	mg/mL	mg/Bottle
alpha-Pinene	NT	NT
Camphene	NT	NT
Sabinene	NT	NT
beta-Myrcene	NT	NT
Beta-Pinene	NT	NT
p-mentha-1-5-diene	NT	NT
(1S)-(+)-3-Carene	NT	NT
Alpha-Terpinene	NT	NT
Ocimene Isomer 1	NT	NT
(R)-(+)-Limonene	NT	NT
Ocimene Isomer2	NT	NT
Eucalyptol (1,8-Cineole)	NT	NT
gamma-Terpinene	NT	NT
Sabinene Hydrate	NT	NT
Terpinolene	NT	NT
Linalool	NT	NT
(+)-Fenchone and L(-)-Fenchone	NT	NT
1R)-Endo-(+)-Fenchyl	NT	NT
(-)-Isopulegol	NT	NT
Camphor	NT	NT
Isoborneol	NT	NT
Hexahydrothymol	NT	NT
(+)-Borneol and (-) Borneol	NT	NT
alpha-Terpineol	NT	NT
gamma-Terpineol	NT	NT
Nerol	NT	NT
Geraniol	NT	NT
(+)-Pulegone	NT	NT
Geranyl Acetate	NT	NT
alpha-Cedrene	NT	NT
trans- Caryophyllene	NT	NT
alpha-Humulene	NT	NT
Valencene	NT	NT
cis-Nerolidol	NT	NT
trans-Nerolidol	NT	NT
Guaiol	NT	NT
(-)-Caryophyllene Oxide	NT	NT
(+)-Cedrol	NT	NT
(-)-alpha-Bisabolol	NT	NT
Total Terpenes	NT	NT



Chemist: EG

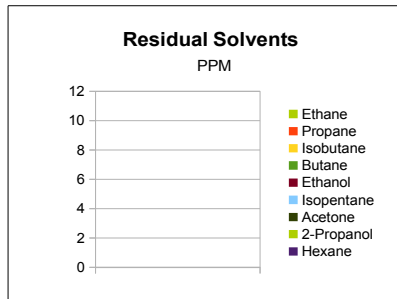
Sample Information		
Sample Identification	Pinex Terp 100mg / 15ml	
Laboratory Number	2017009437	
Batch Number	NA	
Matrix	Tincture	
Analyzed Date	10/04/17	
Extraction Date	10/04/17	
Cannabinoid (HPLC)	mg/mL	mg /Bottle
Compound		
CBD-V	0.00	0.00
CBD-A	0.00	0.00
CBG	0.00	0.00
CBD	5.88	88.14
THC-V	0.00	0.00
CBN	0.00	0.00
Delta 9-THC	0.00	0.00
CBC	0.00	0.00
THC-A	0.00	0.00
Delta 8-THC	0.00	0.00
Cannabinoids Total		
Max Active THC	0.00	0.00
Max Active CBD	5.88	88.14
T. Active Cannabinoids	5.88	88.14
Total Cannabinoids	5.88	88.14
Max Active Ratios		
NA :1 CBD to THC		
0.0 :1 THC to CBD		



Sample Image	
	
Micro Visual:	NOT TESTED
Microbial Plate:	NOT TESTED
Percent Moisture	Not Tested



RS (GCMS-HS) Compound	PPM	RL
Ethane	NT	20.0
Propane	NT	5.0
Isobutane	NT	5.0
Butane	NT	5.0
Ethanol	NT	5.0
Isopentane	NT	5.0
Acetone	NT	50.0
2-Propanol	NT	5.0
Hexane	NT	5.0
Heptane	NT	5.0



mL/bottle	15
mg THC/bottle	0
mg CBD/bottle	88.14
(mg) total cannabinoids/bottle	88.14

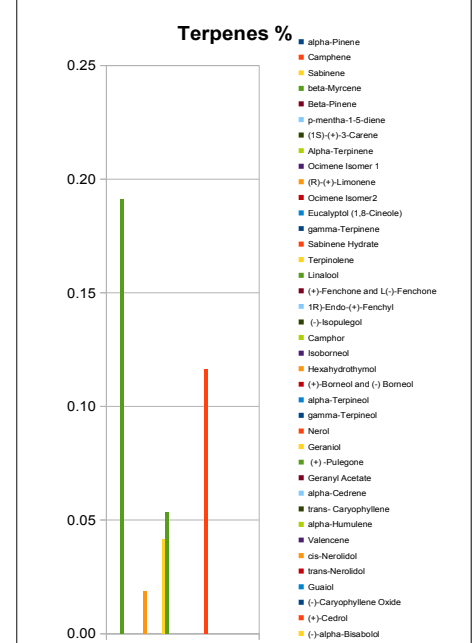
Metals Compound	PPM	RL
Mercury	NT	0.001
Lead	NT	0.020
Arsenic	NT	0.020
Cadmium	NT	0.010

Pesticides Compound	PPM	RL
Quinoxifen	NT	2.0
Myclobutanil	NT	2.0
Azoxystrobin	NT	1.0
Daminozide	NT	1.0
Paclbutrazol	NT	2.0
B-cyfluthrin	NT	4.0

RL=Reporting Limit
NA=Not Applicable
NT=Not Tested

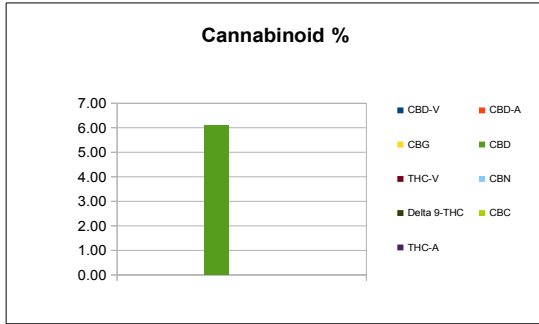



Terpene (GC-MS) Compound	mg/mL	mg/Bottle
alpha-Pinene	0.00	0.00
Camphene	0.00	0.00
Sabinene	0.00	0.00
beta-Myrcene	0.19	2.87
Beta-Pinene	0.00	0.00
p-mentha-1,5-diene	0.00	0.00
(1S)-(+)-3-Carene	0.00	0.00
Alpha-Terpinene	0.00	0.00
Ocimene Isomer 1	0.00	0.00
(R)-(+)-Limonene	0.02	0.28
Ocimene Isomer2	0.00	0.00
Eucalyptol (1,8-Cineole)	0.00	0.00
gamma-Terpinene	0.00	0.00
Sabinene Hydrate	0.00	0.00
Terpinolene	0.04	0.63
Linalool	0.05	0.80
(+)-Fenchone and L(-)-Fenchone	0.00	0.00
1R)-Endo-(+)-Fenchyl	0.00	0.00
(-)-Isopulegol	0.00	0.00
Camphor	0.00	0.00
Isoborneol	0.00	0.00
Hexahydrothymol	0.00	0.00
(+)-Borneol and (-) Borneol	0.00	0.00
alpha-Terpineol	0.00	0.00
gamma-Terpineol	0.00	0.00
Nerol	0.12	1.74
Geraniol	0.00	0.00
(+)-Pulegone	0.00	0.00
Geranyl Acetate	0.00	0.00
alpha-Cedrene	0.00	0.00
trans-Caryophyllene	0.00	0.00
alpha-Humulene	0.00	0.00
Valencene	0.00	0.00
cis-Nerolidol	0.00	0.00
trans-Nerolidol	0.00	0.00
Guaiol	0.00	0.00
(-)-Caryophyllene Oxide	0.00	0.00
(+)-Cedrol	0.00	0.00
(-)-alpha-Bisabolol	0.00	0.00
Total Terpenes	0.42	6.32



Chemist: EG

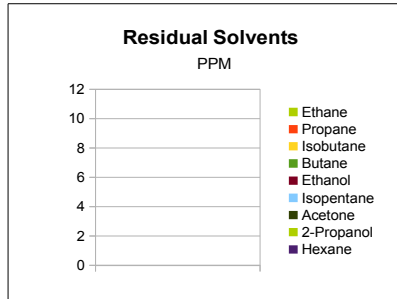
Sample Information		
Sample Identification	Sour Diesel 100mg / 15ml	
Laboratory Number	2017009438	
Batch Number	NA	
Matrix	Tincture	
Analyzed Date	10/04/17	
Extraction Date	10/04/17	
Cannabinoid (HPLC)	mg/mL	mg /Bottle
CBD-V	0.00	0.00
CBD-A	0.00	0.00
CBG	0.00	0.00
CBD	6.11	91.63
THC-V	0.00	0.00
CBN	0.00	0.00
Delta 9-THC	0.00	0.00
CBC	0.00	0.00
THC-A	0.00	0.00
Delta 8-THC	0.00	0.00
Cannabinoids Total		
Max Active THC	0.00	0.00
Max Active CBD	6.11	91.63
T. Active Cannabinoids	6.11	91.63
Total Cannabinoids	6.11	91.63
Max Active Ratios		
NA :1 CBD to THC		
0.0 :1 THC to CBD		



Sample Image	
	
Micro Visual:	NOT TESTED
Microbial Plate:	NOT TESTED
Percent Moisture	Not Tested



RS (GCMS-HS)	PPM	RL
Ethane	NT	20.0
Propane	NT	5.0
Isobutane	NT	5.0
Butane	NT	5.0
Ethanol	NT	5.0
Isopentane	NT	5.0
Acetone	NT	50.0
2-Propanol	NT	5.0
Hexane	NT	5.0
Heptane	NT	5.0



mL/bottle	15
mg THC/bottle	0
mg CBD/bottle	91.63
(mg) total cannabinoids/bottle	91.63

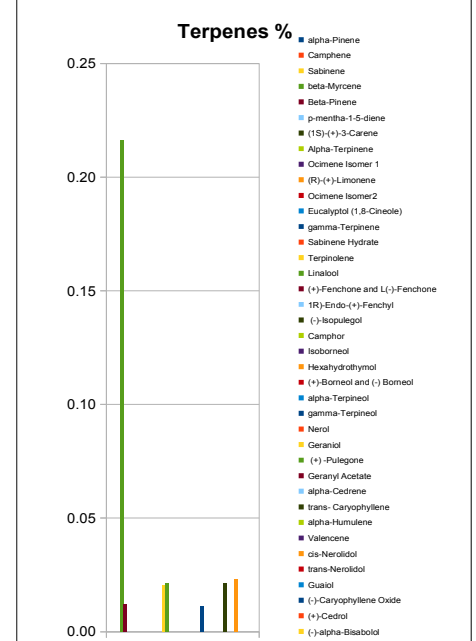
Metals	PPM	RL
Mercury	NT	0.001
Lead	NT	0.020
Arsenic	NT	0.020
Cadmium	NT	0.010

Pesticides	PPM	RL
Quinoxifen	NT	2.0
Myclobutanil	NT	2.0
Azoxystrobin	NT	1.0
Daminozide	NT	1.0
Paclbutrazol	NT	2.0
B-cyfluthrin	NT	4.0

RL=Reporting Limit
NA=Not Applicable
NT=Not Tested

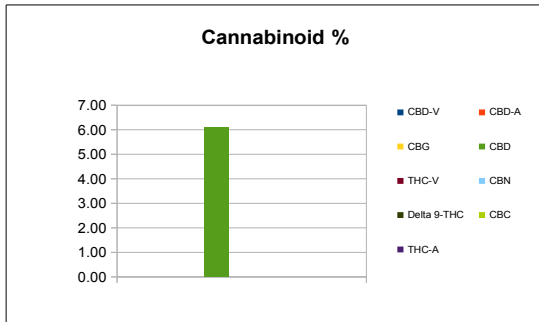



Terpene (GC-MS)	mg/mL	mg/Bottle
alpha-Pinene	0.00	0.00
Camphene	0.00	0.00
Sabinene	0.00	0.00
beta-Myrcene	0.22	3.24
Beta-Pinene	0.01	0.18
p-mentha-1-5-diene	0.00	0.00
(1S)-(+)-3-Carene	0.00	0.00
Alpha-Terpinene	0.00	0.00
Ocimene Isomer 1	0.00	0.00
(R)-(+)-Limonene	0.00	0.00
Ocimene Isomer2	0.00	0.00
Eucalyptol (1,8-Cineole)	0.00	0.00
gamma-Terpinene	0.00	0.00
Sabinene Hydrate	0.00	0.00
Terpinolene	0.02	0.31
Linalool	0.02	0.32
(+)-Fenchone and L(-)-Fenchone	0.00	0.00
1R)-Endo-(+)-Fenchyl	0.00	0.00
(-)-Isopulegol	0.00	0.00
Camphor	0.00	0.00
Isoborneol	0.00	0.00
Hexahydrothymol	0.00	0.00
(+)-Borneol and (-) Borneol	0.00	0.00
alpha-Terpineol	0.00	0.00
gamma-Terpineol	0.01	0.17
Nerol	0.00	0.00
Geraniol	0.00	0.00
(+)-Pulegone	0.00	0.00
Geranyl Acetate	0.00	0.00
alpha-Cedrene	0.00	0.00
trans- Caryophyllene	0.02	0.32
alpha-Humulene	0.00	0.00
Valencene	0.00	0.00
cis-Nerolidol	0.02	0.35
trans-Nerolidol	0.00	0.00
Guaiol	0.00	0.00
(-)-Caryophyllene Oxide	0.00	0.00
(+)-Cedrol	0.00	0.00
(-)-alpha-Bisabolol	0.00	0.00
Total Terpenes	0.33	4.89



Chemist: EG

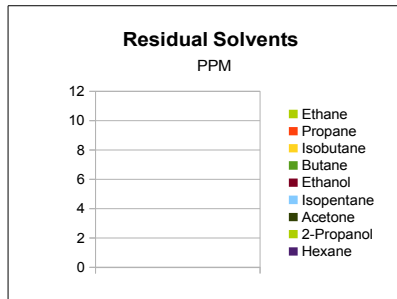
Sample Information		
Sample Identification	BBOG 100mg / 15ml	
Laboratory Number	2017009439	
Batch Number	NA	
Matrix	Tincture	
Analyzed Date	10/04/17	
Extraction Date	10/04/17	
Cannabinoid (HPLC)	mg/mL	mg /Bottle
CBD-V	0.00	0.00
CBD-A	0.00	0.00
CBG	0.00	0.00
CBD	6.10	91.48
THC-V	0.00	0.00
CBN	0.00	0.00
Delta 9-THC	0.00	0.00
CBC	0.00	0.00
THC-A	0.00	0.00
Delta 8-THC	0.00	0.00
Cannabinoids Total		
Max Active THC	0.00	0.00
Max Active CBD	6.10	91.48
T. Active Cannabinoids	6.10	91.48
Total Cannabinoids	6.10	91.48
Max Active Ratios		
NA :1 CBD to THC		
0.0 :1 THC to CBD		



Sample Image	
	
Micro Visual:	NOT TESTED
Microbial Plate:	NOT TESTED
Percent Moisture	Not Tested



RS (GCMS-HS) Compound	PPM	RL
Ethane	NT	20.0
Propane	NT	5.0
Isobutane	NT	5.0
Butane	NT	5.0
Ethanol	NT	5.0
Isopentane	NT	5.0
Acetone	NT	50.0
2-Propanol	NT	5.0
Hexane	NT	5.0
Heptane	NT	5.0



mL/bottle	15
mg THC/bottle	0
mg CBD/bottle	91.48
(mg) total cannabinoids/bottle	91.48

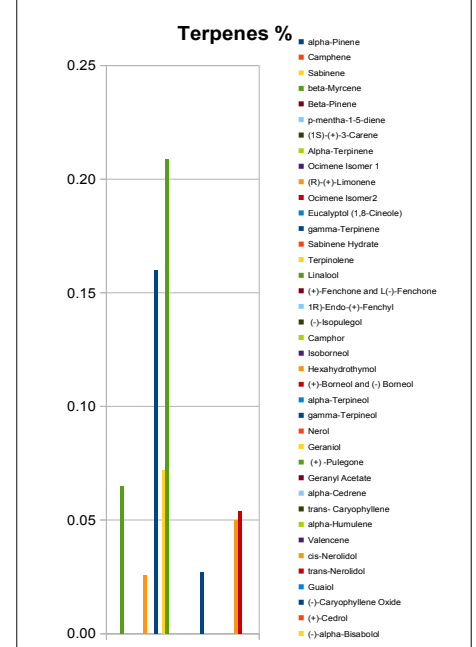
Metals Compound	PPM	RL
Mercury	NT	0.001
Lead	NT	0.020
Arsenic	NT	0.020
Cadmium	NT	0.010

Pesticides Compound	PPM	RL
Quinoxifen	NT	2.0
Myclobutanil	NT	2.0
Azoxystrobin	NT	1.0
Daminozide	NT	1.0
Paclitaxel	NT	2.0
B-cyfluthrin	NT	4.0

RL=Reporting Limit
NA=Not Applicable
NT=Not Tested

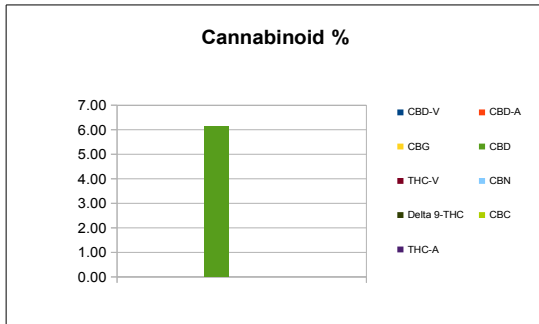



Terpene (GC-MS) Compound	mg/mL	mg/Bottle
alpha-Pinene	0.00	0.00
Camphene	0.00	0.00
Sabinene	0.00	0.00
beta-Myrcene	0.07	0.98
Beta-Pinene	0.00	0.00
p-mentha-1,5-diene	0.00	0.00
(1S)-(+)-3-Carene	0.00	0.00
Alpha-Terpinene	0.00	0.00
Ocimene Isomer 1	0.00	0.00
(R)-(+)-Limonene	0.03	0.38
Ocimene Isomer2	0.00	0.00
Eucalyptol (1,8-Cineole)	0.00	0.00
gamma-Terpinene	0.16	2.40
Sabinene Hydrate	0.00	0.00
Terpinolene	0.07	1.08
Linalool	0.21	3.13
(+)-Fenchone and L(-)-Fenchone	0.00	0.00
1R)-Endo-(+)-Fenchyl	0.00	0.00
(-)-Isopulegol	0.00	0.00
Camphor	0.00	0.00
Isoborneol	0.00	0.00
Hexahydrothymol	0.00	0.00
(+)-Borneol and (-) Borneol	0.00	0.00
alpha-Terpineol	0.00	0.00
gamma-Terpineol	0.03	0.40
Nerol	0.00	0.00
Geraniol	0.00	0.00
(+)-Pulegone	0.00	0.00
Geranyl Acetate	0.00	0.00
alpha-Cedrene	0.00	0.00
trans-Caryophyllene	0.00	0.00
alpha-Humulene	0.00	0.00
Valencene	0.00	0.00
cis-Nerolidol	0.05	0.75
trans-Nerolidol	0.05	0.81
Guaiol	0.00	0.00
(-)-Caryophyllene Oxide	0.00	0.00
(+)-Cedrol	0.00	0.00
(-)-alpha-Bisabolol	0.00	0.00
Total Terpenes	0.66	9.92



Chemist: EG

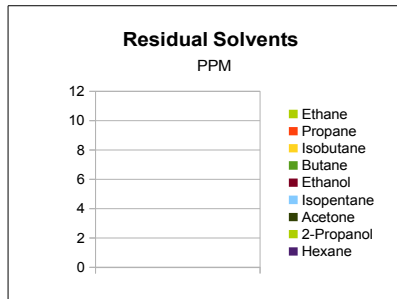
Sample Information		
Sample Identification	StrawbAK 100mg / 15ml	
Laboratory Number	2017009440	
Batch Number	NA	
Matrix	Tincture	
Analyzed Date	10/04/17	
Extraction Date	10/04/17	
Cannabinoid (HPLC)	mg/mL	mg /Bottle
CBD-V	0.00	0.00
CBD-A	0.00	0.00
CBG	0.00	0.00
CBD	6.14	92.05
THC-V	0.00	0.00
CBN	0.00	0.00
Delta 9-THC	0.00	0.00
CBC	0.00	0.00
THC-A	0.00	0.00
Delta 8-THC	0.00	0.00
Cannabinoids Total		
Max Active THC	0.00	0.00
Max Active CBD	6.14	92.05
T. Active Cannabinoids	6.14	92.05
Total Cannabinoids	6.14	92.05
Max Active Ratios		
NA :1 CBD to THC		
0.0 :1 THC to CBD		



Sample Image	
	
Micro Visual:	NOT TESTED
Microbial Plate:	NOT TESTED
Percent Moisture	Not Tested



RS (GCMS-HS) Compound	PPM	RL
Ethane	NT	20.0
Propane	NT	5.0
Isobutane	NT	5.0
Butane	NT	5.0
Ethanol	NT	5.0
Isopentane	NT	5.0
Acetone	NT	50.0
2-Propanol	NT	5.0
Hexane	NT	5.0
Heptane	NT	5.0



mL/bottle	15
mg THC/bottle	0
mg CBD/bottle	92.05
(mg) total cannabinoids/bottle	92.05

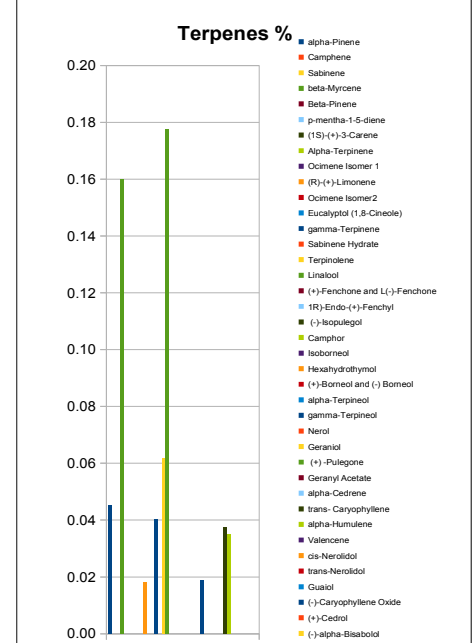
Metals Compound	PPM	RL
Mercury	NT	0.001
Lead	NT	0.020
Arsenic	NT	0.020
Cadmium	NT	0.010

Pesticides Compound	PPM	RL
Quinoxifen	NT	2.0
Myclobutanil	NT	2.0
Azoxystrobin	NT	1.0
Daminozide	NT	1.0
Paclbutrazol	NT	2.0
B-cyfluthrin	NT	4.0

RL=Reporting Limit
NA=Not Applicable
NT=Not Tested



Terpene (GC-MS) Compound	mg/mL	mg/Bottle
alpha-Pinene	0.05	0.68
Camphene	0.00	0.00
Sabinene	0.00	0.00
beta-Myrcene	0.16	2.40
Beta-Pinene	0.00	0.00
p-mentha-1-5-diene	0.00	0.00
(1S)-(+)-3-Carene	0.00	0.00
Alpha-Terpinene	0.00	0.00
Ocimene Isomer 1	0.00	0.00
(R)-(+)-Limonene	0.02	0.27
Ocimene Isomer2	0.00	0.00
Eucalyptol (1,8-Cineole)	0.00	0.00
gamma-Terpinene	0.04	0.61
Sabinene Hydrate	0.00	0.00
Terpinolene	0.06	0.93
Linalool	0.18	2.66
(+)-Fenchone and L(-)-Fenchone	0.00	0.00
1R)-Endo-(+)-Fenchyl	0.00	0.00
(-)-Isopulegol	0.00	0.00
Camphor	0.00	0.00
Isoborneol	0.00	0.00
Hexahydrothymol	0.00	0.00
(+)-Borneol and (-) Borneol	0.00	0.00
alpha-Terpineol	0.00	0.00
gamma-Terpineol	0.02	0.28
Nerol	0.00	0.00
Geraniol	0.00	0.00
(+)-Pulegone	0.00	0.00
Geranyl Acetate	0.00	0.00
alpha-Cedrene	0.00	0.00
trans- Caryophyllene	0.04	0.56
alpha-Humulene	0.04	0.53
Valencene	0.00	0.00
cis-Nerolidol	0.00	0.00
trans-Nerolidol	0.00	0.00
Guaiol	0.00	0.00
(-)-Caryophyllene Oxide	0.00	0.00
(+)-Cedrol	0.00	0.00
(-)-alpha-Bisabolol	0.00	0.00
Total Terpenes	0.59	8.92

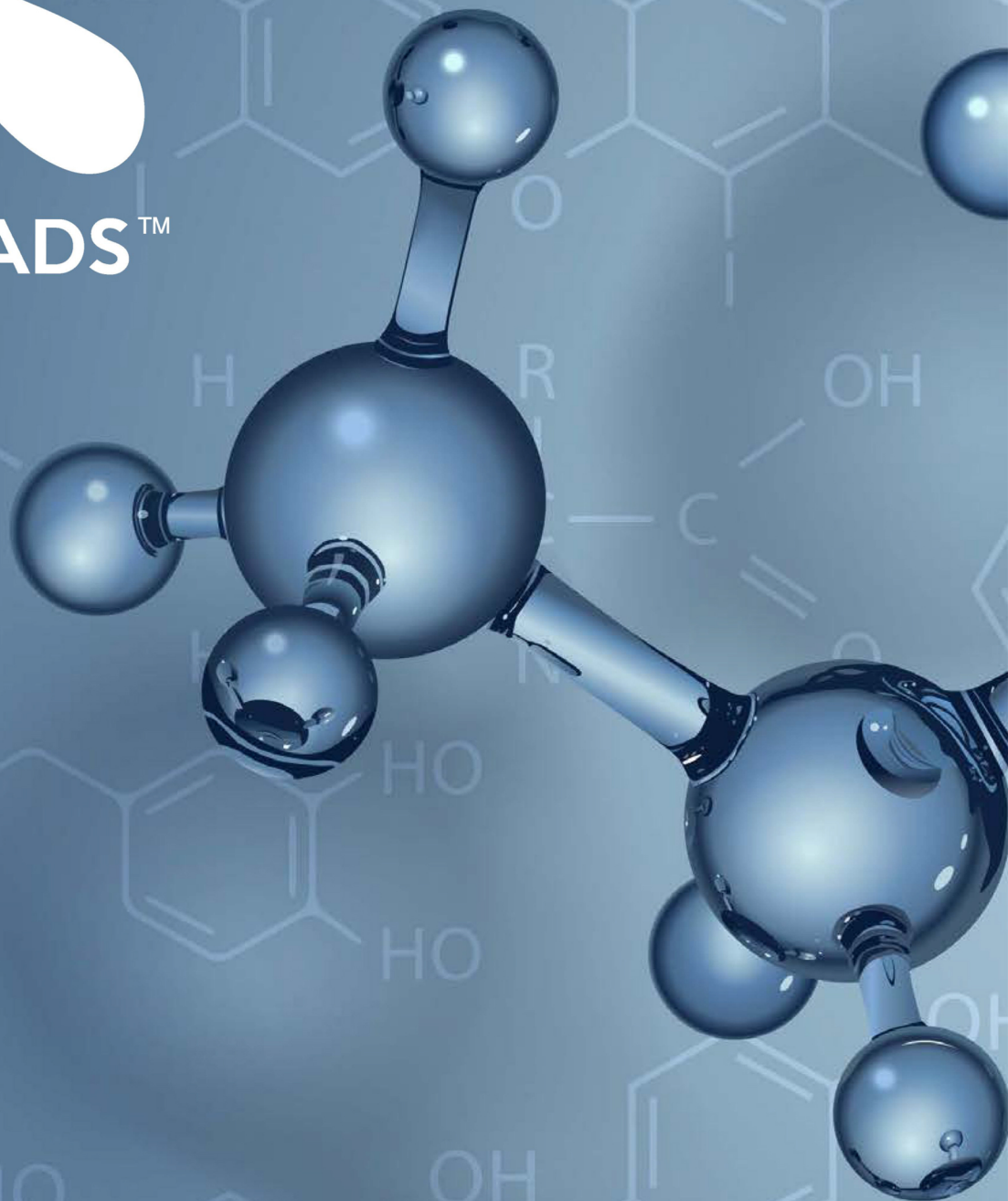


Chemist: EG



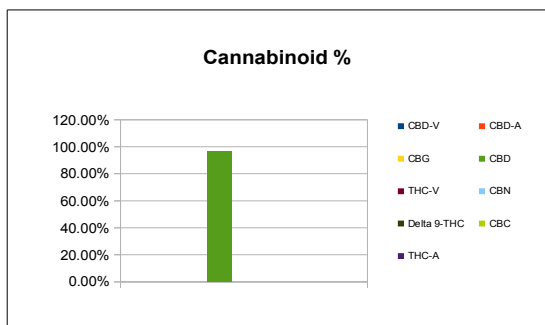
CONCENTRATES


GREEN ROADS™



LAB SHEET PACKET
SETTING THE INDUSTRY STANDARD

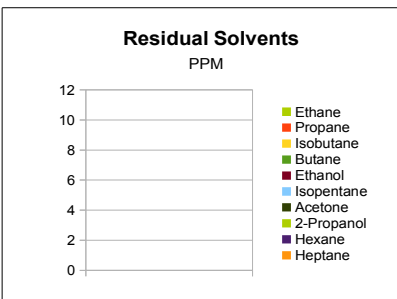
Sample Information		
Sample Identification	PineX Shatter	
Laboratory Number	2017009447	
Batch Number	NA	
Matrix	Concentrate	
Analyzed Date	10/04/17	
Extraction Date	10/04/17	
Cannabinoid (HPLC)	%	mg/g
Compound		
CBD-V	0.00%	0.00
CBD-A	0.00%	0.00
CBG	0.00%	0.00
CBD	96.36%	963.59
THC-V	0.00%	0.00
CBN	0.00%	0.00
Delta 9-THC	0.00%	0.00
CBC	0.00%	0.00
THC-A	0.00%	0.00
Delta 8-THC	0.00%	0.00
Cannabinoids Total		
Max Active THC	0.00%	0.00
Max Active CBD	96.36%	963.59
T. Active Cannabinoids	96.36%	963.59
Total Cannabinoids	96.36%	963.59
Max Active Ratios		
NA :1 CBD to THC		
0.0 :1 THC to CBD		



Sample Image

Micro Visual: NOT TESTED
Microbial Plate: NOT TESTED
Percent Moisture: Not Tested



RS (GCMS-HS) Compound	PPM	RL
Ethane	NT	20.0
Propane	NT	5.0
Isobutane	NT	5.0
Butane	NT	5.0
Ethanol	NT	5.0
Isopentane	NT	5.0
Acetone	NT	50.0
2-Propanol	NT	5.0
Hexane	NT	5.0
Heptane	NT	5.0



g/medible	NA
mg THC/medible	NA
mg CBD/medible	NA
(mg) total cannabinoids/medible	NA

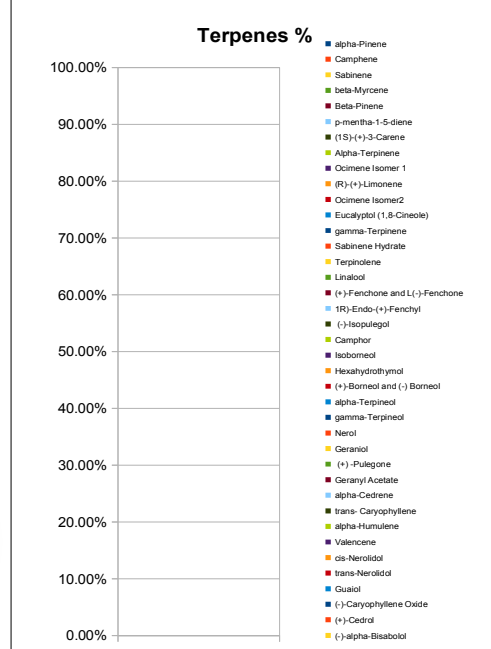
Metals	PPM	RL
Mercury	NT	0.001
Lead	NT	0.020
Arsenic	NT	0.020
Cadmium	NT	0.010

Pesticides	PPM	RL
Quinoxifen	NT	2.0
Myclobutanil	NT	2.0
Azoxystrobin	NT	1.0
Daminozide	NT	1.0
Paclbutrazol	NT	2.0
B-cyfluthrin	NT	4.0

RL=Reporting Limit
NA=Not Applicable
NT=Not Tested

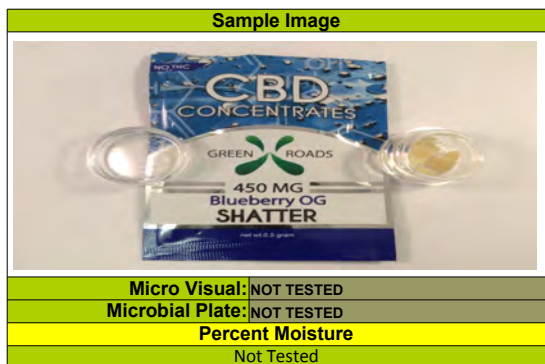
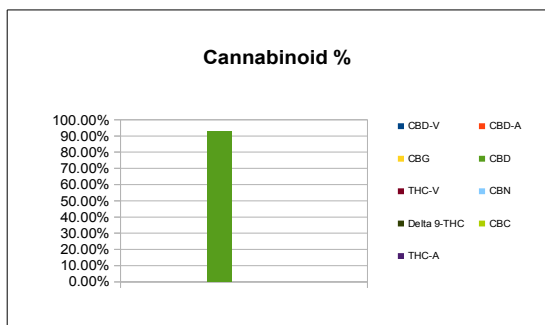


Terpene (GC-MS) Compound	%	mg/g
alpha-Pinene	0.00%	0.00
Camphene	0.00%	0.00
Sabinene	0.00%	0.00
beta-Myrcene	0.00%	0.00
Beta-Pinene	0.00%	0.00
p-mentha-1-5-diene	0.00%	0.00
(1S)-(+)-3-Carene	0.00%	0.00
Alpha-Terpinene	0.00%	0.00
Ocimene Isomer 1	0.00%	0.00
(R)-(+)-Limonene	0.00%	0.00
Ocimene Isomer2	0.00%	0.00
Eucalyptol (1,8-Cineole)	0.00%	0.00
gamma-Terpinene	0.00%	0.00
Sabinene Hydrate	0.00%	0.00
Terpinolene	0.00%	0.00
Linalool	0.00%	0.00
(+)-Fenchone and L(-)-Fenchone	0.00%	0.00
1R)-Endo-(+)-Fenchyl	0.00%	0.00
(-)-Isopulegol	0.00%	0.00
Camphor	0.00%	0.00
Isoborneol	0.00%	0.00
Hexahydrothymol	0.00%	0.00
(+)-Borneol and (-) Borneol	0.00%	0.00
alpha-Terpineol	0.00%	0.00
gamma-Terpineol	0.00%	0.00
Nerol	0.00%	0.00
Geraniol	0.00%	0.00
(+)-Pulegone	0.00%	0.00
Geranyl Acetate	0.00%	0.00
alpha-Cedrene	0.00%	0.00
trans-Caryophyllene	0.00%	0.00
alpha-Humulene	0.00%	0.00
Valencene	0.00%	0.00
cis-Nerolidol	0.00%	0.00
trans-Nerolidol	0.00%	0.00
Guaiol	0.00%	0.00
(-)-Caryophyllene Oxide	0.00%	0.00
(+)-Cedrol	0.00%	0.00
(-)-alpha-Bisabolol	0.00%	0.00
Total Terpenes	0.00%	0.00

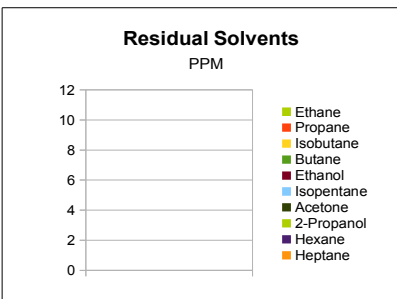


Chemist: EG

Sample Information		
Sample Identification	BBOG Shatter	
Laboratory Number	2017009448	
Batch Number	NA	
Matrix	Concentrate	
Analyzed Date	10/04/17	
Extraction Date	10/04/17	
Cannabinoid (HPLC)	%	mg/g
Compound		
CBD-V	0.00%	0.00
CBD-A	0.00%	0.00
CBG	0.00%	0.00
CBD	92.81%	928.07
THC-V	0.00%	0.00
CBN	0.00%	0.00
Delta 9-THC	0.00%	0.00
CBC	0.00%	0.00
THC-A	0.00%	0.00
Delta 8-THC	0.00%	0.00
Cannabinoids Total		
Max Active THC	0.00%	0.00
Max Active CBD	92.81%	928.07
T. Active Cannabinoids	92.81%	928.07
Total Cannabinoids	92.81%	928.07
Max Active Ratios		
NA :1 CBD to THC		
0.0 :1 THC to CBD		



RS (GCMS-HS) Compound	PPM	RL
Ethane	NT	20.0
Propane	NT	5.0
Isobutane	NT	5.0
Butane	NT	5.0
Ethanol	NT	5.0
Isopentane	NT	5.0
Acetone	NT	50.0
2-Propanol	NT	5.0
Hexane	NT	5.0
Heptane	NT	5.0



g/medible	NA
mg THC/medible	NA
mg CBD/medible	NA
(mg) total cannabinoids/medible	NA

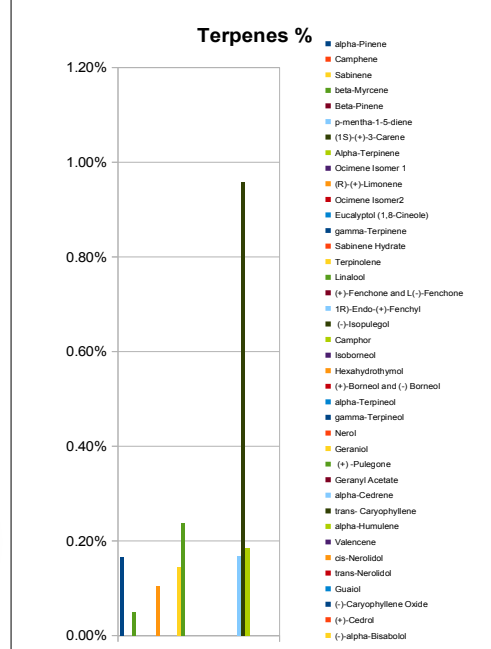
Metals	PPM	RL
Mercury	NT	0.001
Lead	NT	0.020
Arsenic	NT	0.020
Cadmium	NT	0.010

Pesticides	PPM	RL
Quinoxifen	NT	2.0
Myclobutanil	NT	2.0
Azoxystrobin	NT	1.0
Daminozide	NT	1.0
Paclbutrazol	NT	2.0
B-cyfluthrin	NT	4.0

RL=Reporting Limit
NA=Not Applicable
NT=Not Tested

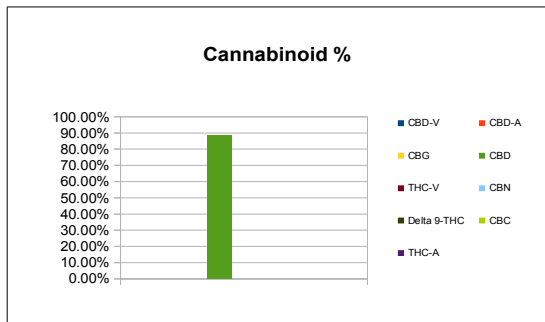



Terpene (GC-MS) Compound	%	mg/g
alpha-Pinene	0.17%	1.66
Camphene	0.00%	0.00
Sabinene	0.00%	0.00
beta-Myrcene	0.05%	0.50
Beta-Pinene	0.00%	0.00
p-mentha-1-5-diene	0.00%	0.00
(1S)-(+)-3-Carene	0.00%	0.00
Alpha-Terpinene	0.00%	0.00
Ocimene Isomer 1	0.00%	0.00
(R)-(+)-Limonene	0.10%	1.04
Ocimene Isomer2	0.00%	0.00
Eucalyptol (1,8-Cineole)	0.00%	0.00
gamma-Terpinene	0.00%	0.00
Sabinene Hydrate	0.00%	0.00
Terpinolene	0.14%	1.44
Linalool	0.24%	2.37
(+)-Fenchone and L(-)-Fenchone	0.00%	0.00
1R)-Endo-(+)-Fenchyl	0.00%	0.00
(-)-Isopulegol	0.00%	0.00
Camphor	0.00%	0.00
Isoborneol	0.00%	0.00
Hexahydrothymol	0.00%	0.00
(+)-Borneol and (-) Borneol	0.00%	0.00
alpha-Terpineol	0.00%	0.00
gamma-Terpineol	0.00%	0.00
Nerol	0.00%	0.00
Geraniol	0.00%	0.00
(+)-Pulegone	0.00%	0.00
Geranyl Acetate	0.00%	0.00
alpha-Cedrene	0.17%	1.68
trans-Caryophyllene	0.96%	9.58
alpha-Humulene	0.19%	1.86
Valencene	0.00%	0.00
cis-Nerolidol	0.00%	0.00
trans-Nerolidol	0.00%	0.00
Guaiol	0.00%	0.00
(-)-Caryophyllene Oxide	0.00%	0.00
(+)-Cedrol	0.00%	0.00
(-)-alpha-Bisabolol	0.00%	0.00
Total Terpenes	2.01%	20.12



Chemist: EG

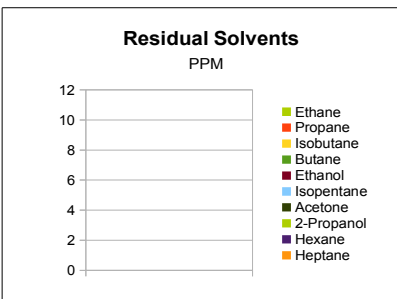
Sample Information		
Sample Identification	AC/DC Shatter	
Laboratory Number	2017009449	
Batch Number	NA	
Matrix	Concentrate	
Analyzed Date	10/04/17	
Extraction Date	10/04/17	
Cannabinoid (HPLC)	%	mg/g
Compound		
CBD-V	0.00%	0.00
CBD-A	0.00%	0.00
CBG	0.00%	0.00
CBD	88.84%	888.36
THC-V	0.00%	0.00
CBN	0.00%	0.00
Delta 9-THC	0.00%	0.00
CBC	0.00%	0.00
THC-A	0.00%	0.00
Delta 8-THC	0.00%	0.00
Cannabinoids Total		
Max Active THC	0.00%	0.00
Max Active CBD	88.84%	888.36
T. Active Cannabinoids	88.84%	888.36
Total Cannabinoids	88.84%	888.36
Max Active Ratios		
NA :1 CBD to THC		
0.0 :1 THC to CBD		



Sample Image

Micro Visual: NOT TESTED
Microbial Plate: NOT TESTED
Percent Moisture: Not Tested



RS (GCMS-HS) Compound	PPM	RL
Ethane	NT	20.0
Propane	NT	5.0
Isobutane	NT	5.0
Butane	NT	5.0
Ethanol	NT	5.0
Isopentane	NT	5.0
Acetone	NT	50.0
2-Propanol	NT	5.0
Hexane	NT	5.0
Heptane	NT	5.0



g/medible	NA
mg THC/medible	NA
mg CBD/medible	NA
(mg) total cannabinoids/medible	NA

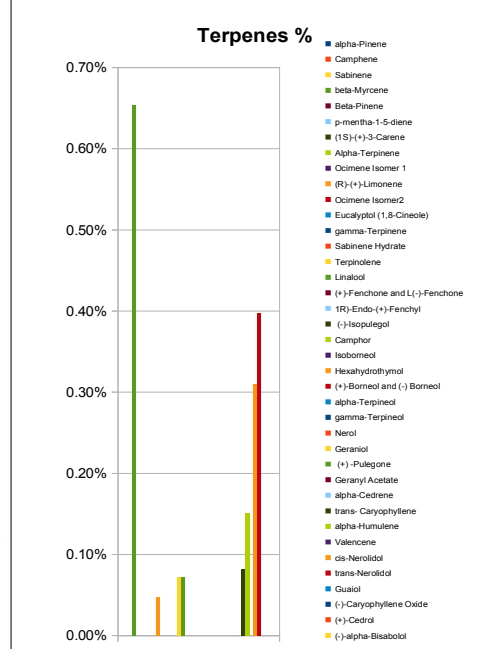
Metals	PPM	RL
Mercury	NT	0.001
Lead	NT	0.020
Arsenic	NT	0.020
Cadmium	NT	0.010

Pesticides	PPM	RL
Quinoxifen	NT	2.0
Myclobutanil	NT	2.0
Azoxystrobin	NT	1.0
Daminozide	NT	1.0
Paclbutrazol	NT	2.0
B-cyfluthrin	NT	4.0

RL=Reporting Limit
NA=Not Applicable
NT=Not Tested

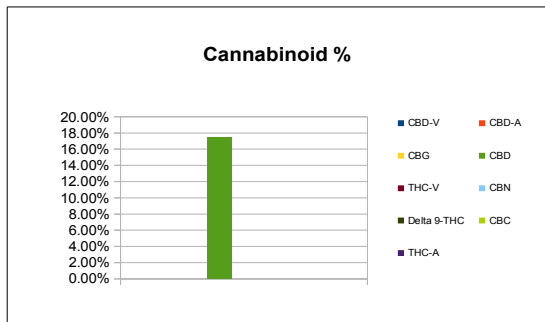



Terpene (GC-MS) Compound	%	mg/g
alpha-Pinene	0.00%	0.00
Camphene	0.00%	0.00
Sabinene	0.00%	0.00
beta-Myrcene	0.65%	6.54
Beta-Pinene	0.00%	0.00
p-mentha-1-5-diene	0.00%	0.00
(1S)-(+)-3-Carene	0.00%	0.00
Alpha-Terpinene	0.00%	0.00
Ocimene Isomer 1	0.00%	0.00
(R)-(+)-Limonene	0.05%	0.48
Ocimene Isomer2	0.00%	0.00
Eucalyptol (1,8-Cineole)	0.00%	0.00
gamma-Terpinene	0.00%	0.00
Sabinene Hydrate	0.00%	0.00
Terpinolene	0.07%	0.72
Linalool	0.07%	0.72
(+)-Fenchone and L(-)-Fenchone	0.00%	0.00
1R)-Endo-(+)-Fenchyl	0.00%	0.00
(-)-Isopulegol	0.00%	0.00
Camphor	0.00%	0.00
Isoborneol	0.00%	0.00
Hexahydrothymol	0.00%	0.00
(+)-Borneol and (-) Borneol	0.00%	0.00
alpha-Terpineol	0.00%	0.00
gamma-Terpineol	0.00%	0.00
Nerol	0.00%	0.00
Geraniol	0.00%	0.00
(+)-Pulegone	0.00%	0.00
Geranyl Acetate	0.00%	0.00
alpha-Cedrene	0.00%	0.00
trans- Caryophyllene	0.08%	0.82
alpha-Humulene	0.15%	1.51
Valencene	0.00%	0.00
cis-Nerolidol	0.31%	3.10
trans-Nerolidol	0.40%	3.97
Guaiol	0.00%	0.00
(-)-Caryophyllene Oxide	0.00%	0.00
(+)-Cedrol	0.00%	0.00
(-)-alpha-Bisabolol	0.00%	0.00
Total Terpenes	1.78%	17.85



Chemist: EG

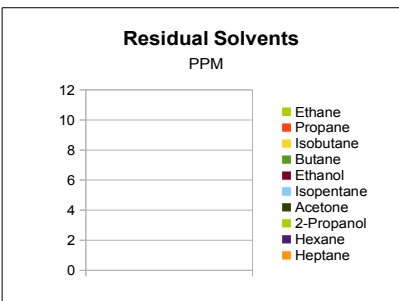
Sample Information		
Sample Identification	DAB wax	
Laboratory Number	2017009450	
Batch Number	NA	
Matrix	Concentrate	
Analyzed Date	10/04/17	
Extraction Date	10/04/17	
Cannabinoid (HPLC)	%	mg/g
Compound		
CBD-V	0.00%	0.00
CBD-A	0.00%	0.00
CBG	0.00%	0.00
CBD	17.48%	174.83
THC-V	0.00%	0.00
CBN	0.00%	0.00
Delta 9-THC	0.00%	0.00
CBC	0.00%	0.00
THC-A	0.00%	0.00
Delta 8-THC	0.00%	0.00
Cannabinoids Total		
Max Active THC	0.00%	0.00
Max Active CBD	17.48%	174.83
T. Active Cannabinoids	17.48%	174.83
Total Cannabinoids	17.48%	174.83
Max Active Ratios		
NA :1 CBD to THC		
0.0 :1 THC to CBD		



Sample Image	
	
Micro Visual:	NOT TESTED
Microbial Plate:	NOT TESTED
Percent Moisture	Not Tested



RS (GCMS-HS)	PPM	RL
Compound		
Ethane	NT	20.0
Propane	NT	5.0
Isobutane	NT	5.0
Butane	NT	5.0
Ethanol	NT	5.0
Isopentane	NT	5.0
Acetone	NT	50.0
2-Propanol	NT	5.0
Hexane	NT	5.0
Heptane	NT	5.0



g/medible	NA
mg THC/medible	NA
mg CBD/medible	NA
(mg) total cannabinoids/medible	NA

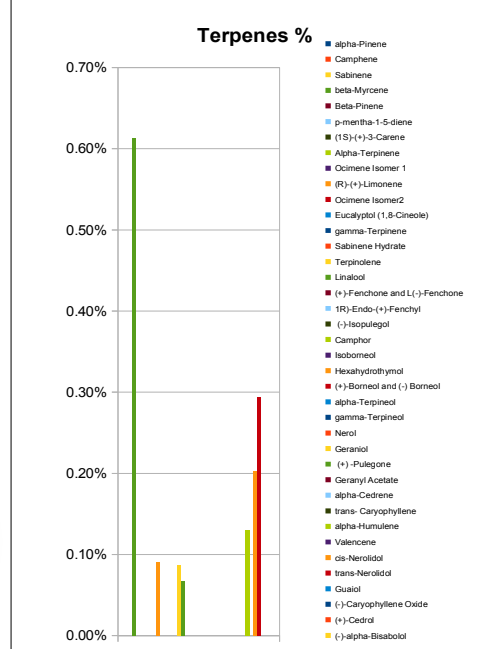
Metals	PPM	RL
Compound		
Mercury	NT	0.001
Lead	NT	0.020
Arsenic	NT	0.020
Cadmium	NT	0.010

Pesticides	PPM	RL
Compound		
Quinoxifen	NT	2.0
Myclobutanil	NT	2.0
Azoxystrobin	NT	1.0
Daminozide	NT	1.0
Paclbutrazol	NT	2.0
B-cyfluthrin	NT	4.0

RL=Reporting Limit
NA=Not Applicable
NT=Not Tested



Terpene (GC-MS)	%	mg/g
Compound		
alpha-Pinene	0.00%	0.00
Camphene	0.00%	0.00
Sabinene	0.00%	0.00
beta-Myrcene	0.61%	6.12
Beta-Pinene	0.00%	0.00
p-mentha-1-5-diene	0.00%	0.00
(1S)-(+)-3-Carene	0.00%	0.00
Alpha-Terpinene	0.00%	0.00
Ocimene Isomer 1	0.00%	0.00
(R)-(+)-Limonene	0.09%	0.90
Ocimene Isomer2	0.00%	0.00
Eucalyptol (1,8-Cineole)	0.00%	0.00
gamma-Terpinene	0.00%	0.00
Sabinene Hydrate	0.00%	0.00
Terpinolene	0.09%	0.87
Linalool	0.07%	0.68
(+)-Fenchone and L(-)-Fenchone	0.00%	0.00
1R)-Endo-(+)-Fenchyl	0.00%	0.00
(-)-Isopulegol	0.00%	0.00
Camphor	0.00%	0.00
Isoborneol	0.00%	0.00
Hexahydrothymol	0.00%	0.00
(+)-Borneol and (-) Borneol	0.00%	0.00
alpha-Terpineol	0.00%	0.00
gamma-Terpineol	0.00%	0.00
Nerol	0.00%	0.00
Geraniol	0.00%	0.00
(+)-Pulegone	0.00%	0.00
Geranyl Acetate	0.00%	0.00
alpha-Cedrene	0.00%	0.00
trans-Caryophyllene	0.00%	0.00
alpha-Humulene	0.13%	1.30
Valencene	0.00%	0.00
cis-Nerolidol	0.20%	2.02
trans-Nerolidol	0.29%	2.94
Guaiol	0.00%	0.00
(-)-Caryophyllene Oxide	0.00%	0.00
(+)-Cedrol	0.00%	0.00
(-)-alpha-Bisabolol	0.00%	0.00
Total Terpenes	1.48%	14.84

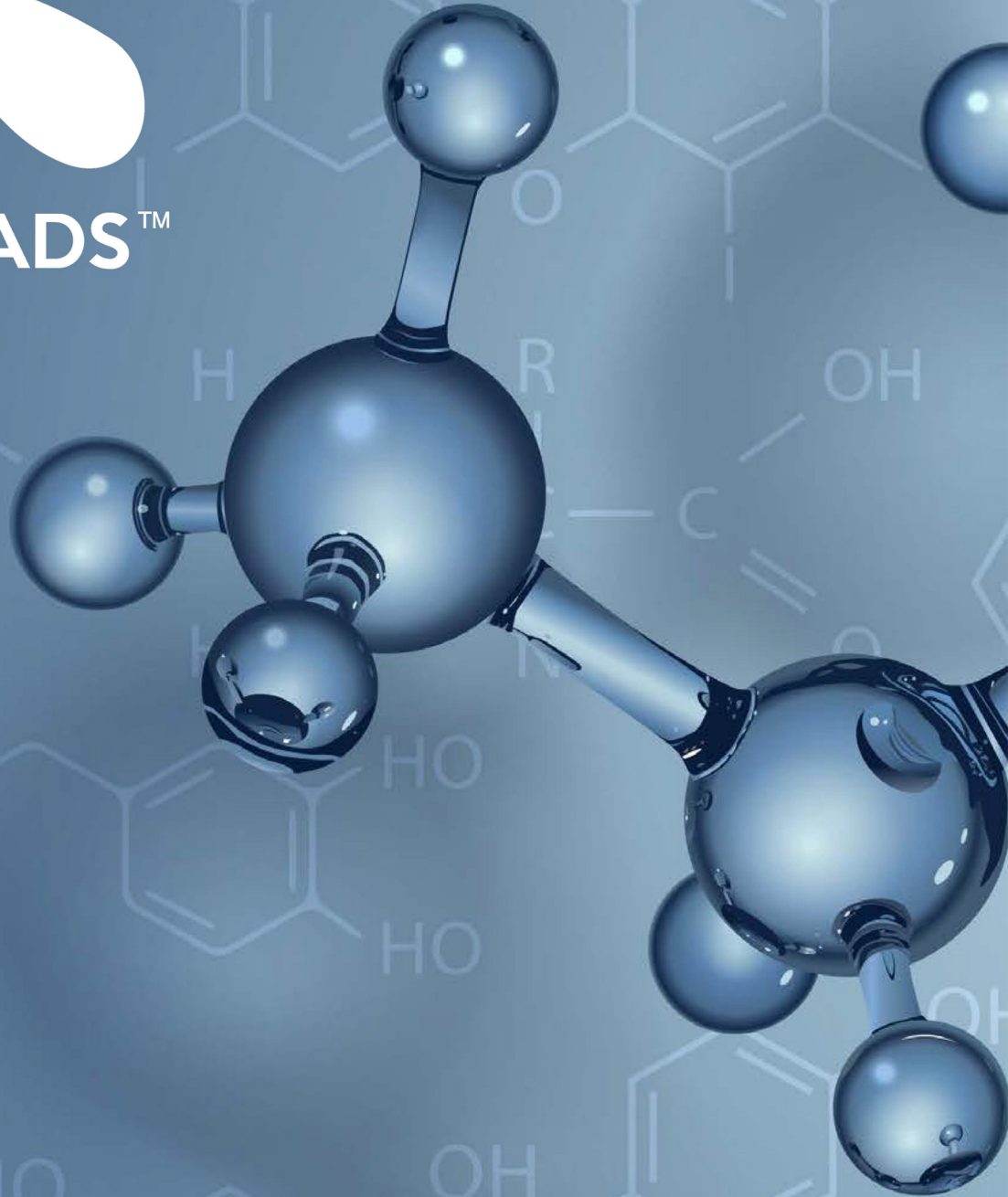


Chemist: EG



EDIBLES

GREEN ROADS™

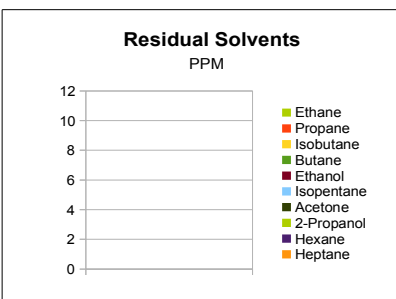


**LAB SHEET PACKET
SETTING THE INDUSTRY STANDARD**

Sample Information		
Sample Identification	Lollypop	
Laboratory Number	2017009401	
Batch Number	NA	
Matrix	Medible	
Analyzed Date	10/04/17	
Extraction Date	10/03/17	
Cannabinoid (HPLC)	%	mg/g
Compound		
CBD-V	0.00%	0.00
CBD-A	0.00%	0.00
CBG	0.00%	0.00
CBD	0.25%	2.53
THC-V	0.00%	0.00
CBN	0.00%	0.00
Delta 9-THC	0.00%	0.00
CBC	0.00%	0.00
THC-A	0.00%	0.00
Delta 8-THC	0.00%	0.00
Cannabinoids Total		
Max Active THC	0.00%	0.00
Max Active CBD	0.25%	2.53
T. Active Cannabinoids	0.25%	2.53
Total Cannabinoids	0.25%	2.53
Max Active Ratios		
NA :1 CBD to THC		
0.0 :1 THC to CBD		



RS (GCMS-HS)	PPM	RL
Compound		
Ethane	NT	20.0
Propane	NT	5.0
Isobutane	NT	5.0
Butane	NT	5.0
Ethanol	NT	5.0
Isopentane	NT	5.0
Acetone	NT	50.0
2-Propanol	NT	5.0
Hexane	NT	5.0
Heptane	NT	5.0



g/medible	14.94
mg THC/medible	0
mg CBD/medible	37.75
(mg) total cannabinoids/medible	37.75

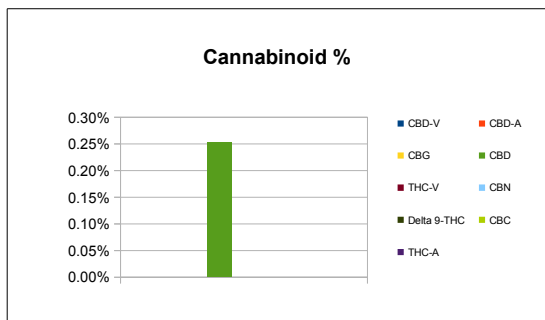
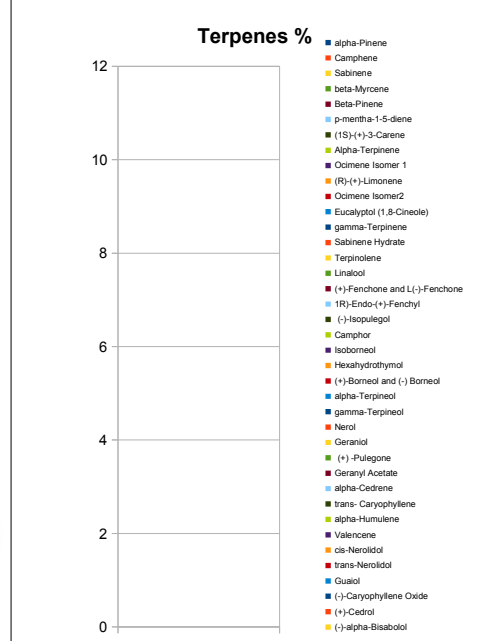
Metals	PPM	RL
Compound		
Mercury	NT	0.001
Lead	NT	0.020
Arsenic	NT	0.020
Cadmium	NT	0.010


Pesticides	PPM	RL
Compound		
Quinoxifen	NT	2.0
Myclobutanil	NT	2.0
Azoxystrobin	NT	1.0
Daminozide	NT	1.0
Paclobutrazol	NT	2.0
B-cyfluthrin	NT	4.0

RL=Reporting Limit
NA=Not Applicable
NT=Not Tested



Terpene (GC-MS)	%	mg/g
Compound		
alpha-Pinene	NT	NT
Camphene	NT	NT
Sabinene	NT	NT
beta-Myrcene	NT	NT
Beta-Pinene	NT	NT
p-mentha-1,5-diene	NT	NT
(1S)-(+)-3-Carene	NT	NT
Alpha-Terpinene	NT	NT
Ocimene Isomer 1	NT	NT
(R)-(+)-Limonene	NT	NT
Ocimene Isomer2	NT	NT
Eucalyptol (1,8-Cineole)	NT	NT
gamma-Terpinene	NT	NT
Sabinene Hydrate	NT	NT
Terpinolene	NT	NT
Linalool	NT	NT
(+)-Fenchone and L(-)-Fenchone	NT	NT
1R)-Endo-(+)-Fenchyl	NT	NT
(-)-Isopulegol	NT	NT
Camphor	NT	NT
Isoborneol	NT	NT
Hexahydrothymol	NT	NT
(+)-Borneol and (-) Borneol	NT	NT
alpha-Terpineol	NT	NT
gamma-Terpineol	NT	NT
Nerol	NT	NT
Geraniol	NT	NT
(+) -Pulegone	NT	NT
Geranyl Acetate	NT	NT
alpha-Cedrene	NT	NT
trans- Caryophyllene	NT	NT
alpha-Humulene	NT	NT
Valencene	NT	NT
cis-Nerolidol	NT	NT
trans-Nerolidol	NT	NT
Guaiol	NT	NT
(-)-Caryophyllene Oxide	NT	NT
(+)-Cedrol	NT	NT
(-)-alpha-Bisabolol	NT	NT
Total Terpenes	NT	NT



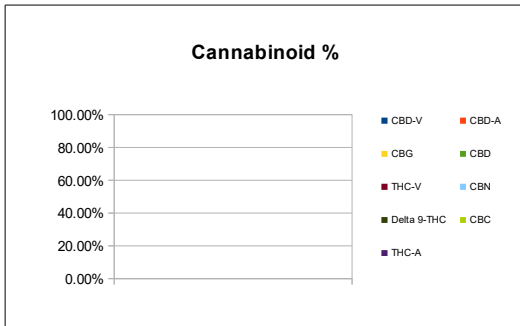
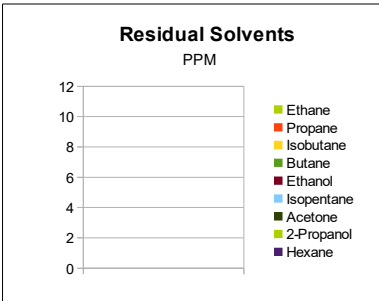
Sample Image

Micro Visual: NOT TESTED
Microbial Plate: NOT TESTED
Percent Moisture: NT

Chemist: TS

Sample Information		
Sample Identification	Gummie Block	
Laboratory Number	2017009402	
Batch Number	NA	
Matrix	Medible	
Analyzed Date	10/04/17	
Extraction Date	10/03/17	
Cannabinoid (HPLC)	%	mg/g
Compound		
CBD-V	0.00%	0.00
CBD-A	0.00%	0.00
CBG	0.00%	0.00
CBD	0.27%	2.73
THC-V	0.00%	0.00
CBN	0.00%	0.00
Delta 9-THC	0.00%	0.00
CBC	0.00%	0.00
THC-A	0.00%	0.00
Delta 8-THC	0.00%	0.00
Cannabinoids Total		
Max Active THC	0.00%	0.00
Max Active CBD	0.27%	2.73
T. Active Cannabinoids	0.27%	2.73
Total Cannabinoids	0.27%	2.73
Max Active Ratios		
NA :1 CBD to THC		
0.0 :1 THC to CBD		




RS (GCMS-HS)	PPM	RL
Compound		
Ethane	NT	20.0
Propane	NT	5.0
Isobutane	NT	5.0
Butane	NT	5.0
Ethanol	NT	5.0
Isopentane	NT	5.0
Acetone	NT	50.0
2-Propanol	NT	5.0
Hexane	NT	5.0
Heptane	NT	5.0



g/medible	25.77
mg THC/medible	0
mg CBD/medible	70.38
(mg) total cannabinoids/medible	70.38

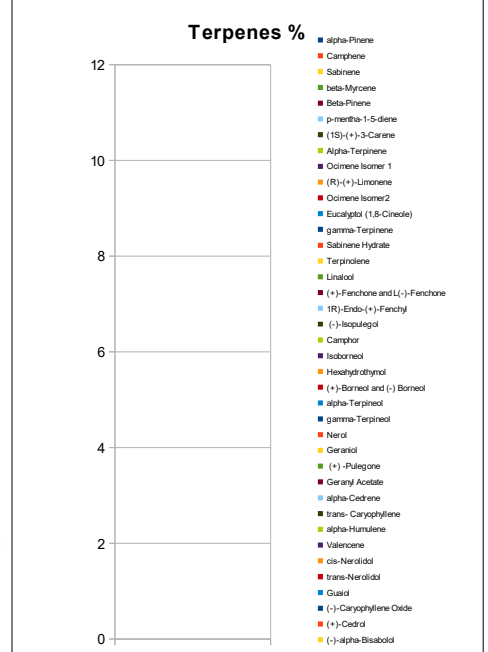
Terpene (GC-MS)	%	mg/g
Compound		
alpha-Pinene	NT	NT
Camphene	NT	NT
Sabinene	NT	NT
beta-Myrcene	NT	NT
Beta-Pinene	NT	NT
p-mentha-1-5-diene	NT	NT
(1S)-(+)-3-Carene	NT	NT
Alpha-Terpinene	NT	NT
Ocimene Isomer 1	NT	NT
(R)-(+)-Limonene	NT	NT
Ocimene Isomer2	NT	NT
Eucalyptol (1,8-Cineole)	NT	NT
gamma-Terpinene	NT	NT
Sabinene Hydrate	NT	NT
Terpinolene	NT	NT
Linalool	NT	NT
(+)-Fenchone and L(-)-Fenchone	NT	NT
1R)-Endo-(+)-Fenchyl	NT	NT
(-)-Isopulegol	NT	NT
Camphor	NT	NT
Isoborneol	NT	NT
Hexahydrothymol	NT	NT
(+)-Borneol and (-) Borneol	NT	NT
alpha-Terpineol	NT	NT
gamma-Terpineol	NT	NT
Nerol	NT	NT
Geraniol	NT	NT
(+) -Pulegone	NT	NT
Geranyl Acetate	NT	NT
alpha-Cedrene	NT	NT
trans-Caryophyllene	NT	NT
alpha-Humulene	NT	NT
Valencene	NT	NT
cis-Nerolidol	NT	NT
trans-Nerolidol	NT	NT
Guaiol	NT	NT
(-)-Caryophyllene Oxide	NT	NT
(+)-Cedrol	NT	NT
(-)-alpha-Bisabolol	NT	NT
Total Terpenes	NT	NT

Sample Image

Micro Visual: NOT TESTED
Microbial Plate: NOT TESTED
Percent Moisture
NT

Metals	PPM	RL
Compound		
Mercury	NT	0.001
Lead	NT	0.020
Arsenic	NT	0.020
Cadmium	NT	0.010

Pesticides	PPM	RL
Compound		
Quinoxifen	NT	2.0
Myclobutanil	NT	2.0
Azoxystrobin	NT	1.0
Daminozide	NT	1.0
Paclbutrazol	NT	2.0
B-cyfluthrin	NT	4.0

RL=Reporting Limit
NA=Not Applicable
NT=Not Tested

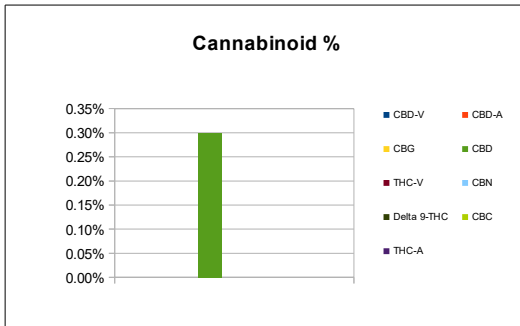
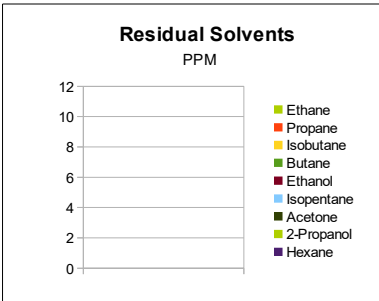


Chemist: TS

Sample Information		
Sample Identification	Candies	
Laboratory Number	2017009403	
Batch Number	NA	
Matrix	Medible	
Analyzed Date	10/04/17	
Extraction Date	10/03/17	
Cannabinoid (HPLC)	%	mg/g
Compound		
CBD-V	0.00%	0.00
CBD-A	0.00%	0.00
CBG	0.00%	0.00
CBD	0.30%	2.99
THC-V	0.00%	0.00
CBN	0.00%	0.00
Delta 9-THC	0.00%	0.00
CBC	0.00%	0.00
THC-A	0.00%	0.00
Delta 8-THC	0.00%	0.00
Cannabinoids Total		
Max Active THC	0.00%	0.00
Max Active CBD	0.30%	2.99
T. Active Cannabinoids	0.30%	2.99
Total Cannabinoids	0.30%	2.99
Max Active Ratios		
NA :1 CBD to THC		
0.0 :1 THC to CBD		




RS (GCMS-HS)	PPM	RL
Compound		
Ethane	NT	20.0
Propane	NT	5.0
Isobutane	NT	5.0
Butane	NT	5.0
Ethanol	NT	5.0
Isopentane	NT	5.0
Acetone	NT	50.0
2-Propanol	NT	5.0
Hexane	NT	5.0
Heptane	NT	5.0



g/medible	6.68
mg THC/medible	0
mg CBD/medible	20
(mg) total cannabinoids/medible	20

Terpene (GC-MS)	%	mg/g
Compound		
alpha-Pinene	NT	NT
Camphene	NT	NT
Sabinene	NT	NT
beta-Myrcene	NT	NT
Beta-Pinene	NT	NT
p-mentha-1-5-diene	NT	NT
(1S)-(+)-3-Carene	NT	NT
Alpha-Terpinene	NT	NT
Ocimene Isomer 1	NT	NT
(R)-(+)-Limonene	NT	NT
Ocimene Isomer2	NT	NT
Eucalyptol (1,8-Cineole)	NT	NT
gamma-Terpinene	NT	NT
Sabinene Hydrate	NT	NT
Terpinolene	NT	NT
Linalool	NT	NT
(+)-Fenchone and L(-)-Fenchone	NT	NT
1R)-Endo-(+)-Fenchyl	NT	NT
(-)-Isopulegol	NT	NT
Camphor	NT	NT
Isoborneol	NT	NT
Hexahydrothymol	NT	NT
(+)-Borneol and (-) Borneol	NT	NT
alpha-Terpineol	NT	NT
gamma-Terpineol	NT	NT
Nerol	NT	NT
Geraniol	NT	NT
(+) -Pulegone	NT	NT
Geranyl Acetate	NT	NT
alpha-Cedrene	NT	NT
trans-Caryophyllene	NT	NT
alpha-Humulene	NT	NT
Valencene	NT	NT
cis-Nerolidol	NT	NT
trans-Nerolidol	NT	NT
Guaiol	NT	NT
(-)-Caryophyllene Oxide	NT	NT
(+)-Cedrol	NT	NT
(-)-alpha-Bisabolol	NT	NT
Total Terpenes	NT	NT

Sample Image

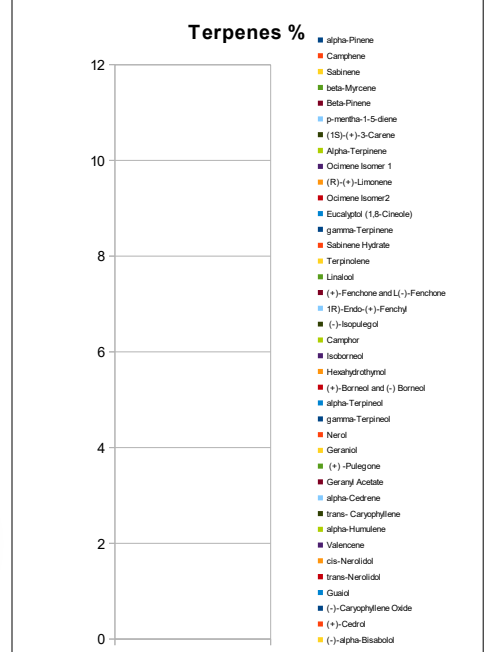


Micro Visual: NOT TESTED
Microbial Plate: NOT TESTED
Percent Moisture: NT

Metals	PPM	RL
Compound		
Mercury	NT	0.001
Lead	NT	0.020
Arsenic	NT	0.020
Cadmium	NT	0.010

Pesticides	PPM	RL
Compound		
Quinoxifen	NT	2.0
Myclobutanil	NT	2.0
Azoxystrobin	NT	1.0
Daminozide	NT	1.0
Paclbutrazol	NT	2.0
B-cyfluthrin	NT	4.0

RL=Reporting Limit
NA=Not Applicable
NT=Not Tested



Chemist: TS

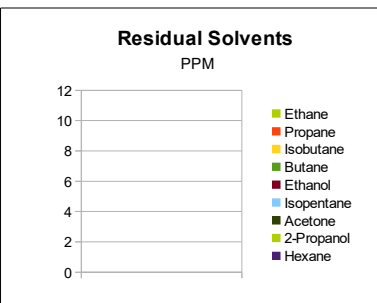


Sample Information		
Sample Identification	Sourz Froggies	
Laboratory Number	2017009404	
Batch Number	NA	
Matrix	Medible	
Analyzed Date	10/04/17	
Extraction Date	10/03/17	
Cannabinoid (HPLC)	%	mg/g
Compound		
CBD-V	0.00%	0.00
CBD-A	0.00%	0.00
CBG	0.00%	0.00
CBD	0.27%	2.66
THC-V	0.00%	0.00
CBN	0.00%	0.00
Delta 9-THC	0.00%	0.00
CBC	0.00%	0.00
THC-A	0.00%	0.00
Delta 8-THC	0.00%	0.00
Cannabinoids Total		
Max Active THC	0.00%	0.00
Max Active CBD	0.27%	2.66
T. Active Cannabinoids	0.27%	2.66
Total Cannabinoids	0.27%	2.66
Max Active Ratios		
NA :1 CBD to THC		
0.0 :1 THC to CBD		

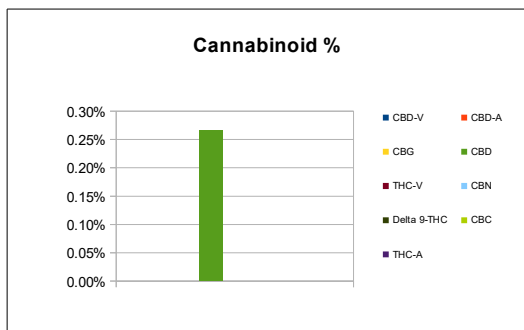


ASSOCIATION OF COMMERCIAL CANNABIS LABORATORIES


RS (GCMS-HS)	PPM	RL
Compound		
Ethane	NT	20.0
Propane	NT	5.0
Isobutane	NT	5.0
Butane	NT	5.0
Ethanol	NT	5.0
Isopentane	NT	5.0
Acetone	NT	50.0
2-Propanol	NT	5.0
Hexane	NT	5.0
Heptane	NT	5.0



Terpene (GC-MS)	%	mg/g
Compound		
alpha-Pinene	NT	NT
Camphene	NT	NT
Sabinene	NT	NT
beta-Myrcene	NT	NT
Beta-Pinene	NT	NT
p-mentha-1-5-diene	NT	NT
(1S)-(+)-3-Carene	NT	NT
Alpha-Terpinene	NT	NT
Ocimene Isomer 1	NT	NT
(R)-(+)-Limonene	NT	NT
Ocimene Isomer2	NT	NT
Eucalyptol (1,8-Cineole)	NT	NT
gamma-Terpinene	NT	NT
Sabinene Hydrate	NT	NT
Terpinolene	NT	NT
Linalool	NT	NT
(+)-Fenchone and L(-)-Fenchone	NT	NT
1R)-Endo-(+)-Fenchyl	NT	NT
(-)-Isopulegol	NT	NT
Camphor	NT	NT
Isoborneol	NT	NT
Hexahydrothymol	NT	NT
(+)-Borneol and (-) Borneol	NT	NT
alpha-Terpineol	NT	NT
gamma-Terpineol	NT	NT
Nerol	NT	NT
Geraniol	NT	NT
(+) -Pulegone	NT	NT
Geranyl Acetate	NT	NT
alpha-Cedrene	NT	NT
trans-Caryophyllene	NT	NT
alpha-Humulene	NT	NT
Valencene	NT	NT
cis-Nerolidol	NT	NT
trans-Nerolidol	NT	NT
Guaiol	NT	NT
(-)-Caryophyllene Oxide	NT	NT
(+)-Cedrol	NT	NT
(-)-alpha-Bisabolol	NT	NT
Total Terpenes	NT	NT



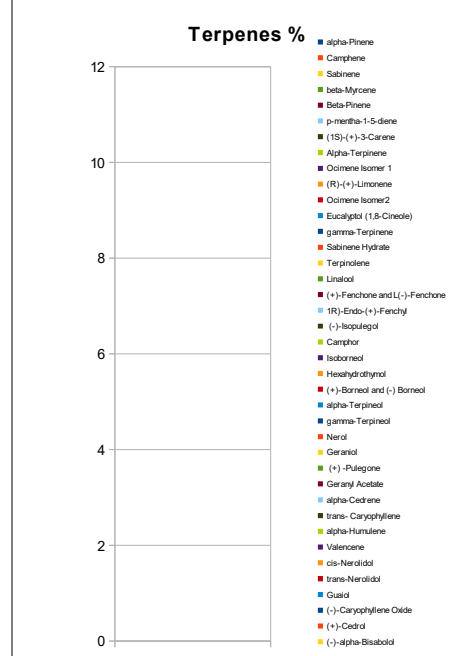
g/medible	13.73
mg THC/medible	0
mg CBD/medible	36.57
(mg) total cannabinoids/medible	36.57

Sample Image

Micro Visual: NOT TESTED
Microbial Plate: NOT TESTED
Percent Moisture
NT

Metals	PPM	RL
Compound		
Mercury	NT	0.001
Lead	NT	0.020
Arsenic	NT	0.020
Cadmium	NT	0.010

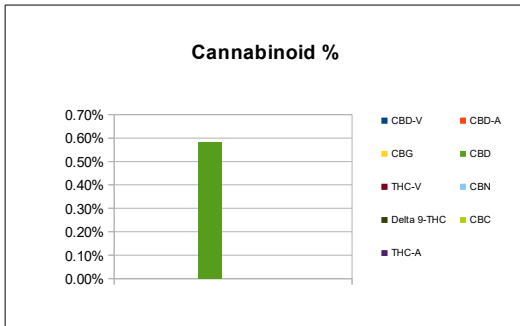
Pesticides	PPM	RL
Compound		
Quinoxifen	NT	2.0
Myclobutanil	NT	2.0
Azoxystrobin	NT	1.0
Daminozide	NT	1.0
Paclbutrazol	NT	2.0
B-cyfluthrin	NT	4.0


RL=Reporting Limit
NA=Not Applicable
NT=Not Tested



Chemist: TS

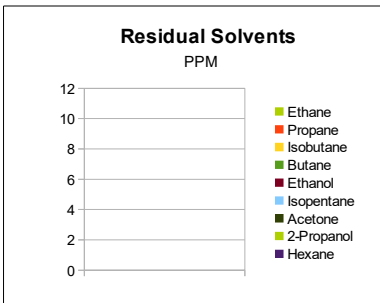
Sample Information		
Sample Identification	200mg Froggies	
Laboratory Number	2017009405	
Batch Number	NA	
Matrix	Medible	
Analyzed Date	10/04/17	
Extraction Date	10/03/17	
Cannabinoid (HPLC)	%	mg/g
Compound		
CBD-V	0.00%	0.00
CBD-A	0.00%	0.00
CBG	0.00%	0.00
CBD	0.58%	5.81
THC-V	0.00%	0.00
CBN	0.00%	0.00
Delta 9-THC	0.00%	0.00
CBC	0.00%	0.00
THC-A	0.00%	0.00
Delta 8-THC	0.00%	0.00
Cannabinoids Total		
Max Active THC	0.00%	0.00
Max Active CBD	0.58%	5.81
T. Active Cannabinoids	0.58%	5.81
Total Cannabinoids	0.58%	5.81
Max Active Ratios		
NA :1 CBD to THC		
0.0 :1 THC to CBD		



Sample Image

Micro Visual: NOT TESTED
Microbial Plate: NOT TESTED
Percent Moisture
NT



RS (GCMS-HS)	PPM	RL
Compound		
Ethane	NT	20.0
Propane	NT	5.0
Isobutane	NT	5.0
Butane	NT	5.0
Ethanol	NT	5.0
Isopentane	NT	5.0
Acetone	NT	50.0
2-Propanol	NT	5.0
Hexane	NT	5.0
Heptane	NT	5.0



g/medible	14.75
mg THC/medible	0
mg CBD/medible	85.73
(mg) total cannabinoids/medible	85.73

Metals	PPM	RL
Compound		
Mercury	NT	0.001
Lead	NT	0.020
Arsenic	NT	0.020
Cadmium	NT	0.010

Pesticides	PPM	RL
Compound		
Quinoxifen	NT	2.0
Myclobutanil	NT	2.0
Azoxystrobin	NT	1.0
Daminozide	NT	1.0
Paclbutrazol	NT	2.0
B-cyfluthrin	NT	4.0

RL=Reporting Limit
NA=Not Applicable
NT=Not Tested



Terpene (GC-MS)	%	mg/g
Compound		
alpha-Pinene	NT	NT
Camphene	NT	NT
Sabinene	NT	NT
beta-Myrcene	NT	NT
Beta-Pinene	NT	NT
p-mentha-1-5-diene	NT	NT
(1S)-(+)-3-Carene	NT	NT
Alpha-Terpinene	NT	NT
Ocimene Isomer 1	NT	NT
(R)-(+)-Limonene	NT	NT
Ocimene Isomer2	NT	NT
Eucalyptol (1,8-Cineole)	NT	NT
gamma-Terpinene	NT	NT
Sabinene Hydrate	NT	NT
Terpinolene	NT	NT
Linalool	NT	NT
(+)-Fenchone and L(-)-Fenchone	NT	NT
1R)-Endo-(+)-Fenchyl	NT	NT
(-)-Isopulegol	NT	NT
Camphor	NT	NT
Isoborneol	NT	NT
Hexahydrothymol	NT	NT
(+)-Borneol and (-) Borneol	NT	NT
alpha-Terpineol	NT	NT
gamma-Terpineol	NT	NT
Nerol	NT	NT
Geraniol	NT	NT
(+) -Pulegone	NT	NT
Geranyl Acetate	NT	NT
alpha-Cedrene	NT	NT
trans- Caryophyllene	NT	NT
alpha-Humulene	NT	NT
Valencene	NT	NT
cis-Nerolidol	NT	NT
trans-Nerolidol	NT	NT
Guaiol	NT	NT
(-)-Caryophyllene Oxide	NT	NT
(+)-Cedrol	NT	NT
(-)-alpha-Bisabolol	NT	NT
Total Terpenes	NT	NT

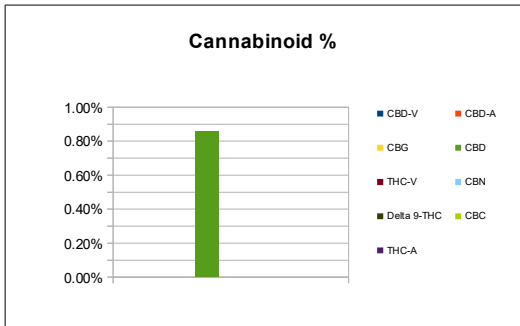
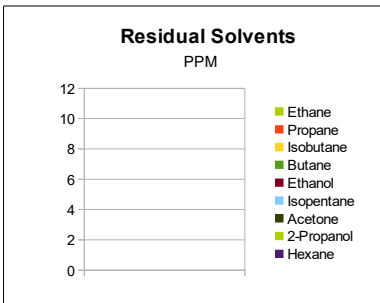


Chemist: TS

Sample Information		
Sample Identification	Max Strength Froggies	
Laboratory Number	2017009406	
Batch Number	NA	
Matrix	Medible	
Analyzed Date	10/04/17	
Extraction Date	10/03/17	
Cannabinoid (HPLC)	%	mg/g
Compound		
CBD-V	0.00%	0.00
CBD-A	0.00%	0.00
CBG	0.00%	0.00
CBD	0.86%	8.59
THC-V	0.00%	0.00
CBN	0.00%	0.00
Delta 9-THC	0.00%	0.00
CBC	0.00%	0.00
THC-A	0.00%	0.00
Delta 8-THC	0.00%	0.00
Cannabinoids Total		
Max Active THC	0.00%	0.00
Max Active CBD	0.86%	8.59
T. Active Cannabinoids	0.86%	8.59
Total Cannabinoids	0.86%	8.59
Max Active Ratios		
NA :1 CBD to THC		
0.0 :1 THC to CBD		




RS (GCMS-HS)	PPM	RL
Compound		
Ethane	NT	20.0
Propane	NT	5.0
Isobutane	NT	5.0
Butane	NT	5.0
Ethanol	NT	5.0
Isopentane	NT	5.0
Acetone	NT	50.0
2-Propanol	NT	5.0
Hexane	NT	5.0
Heptane	NT	5.0



g/medible	12.6
mg THC/medible	0
mg CBD/medible	108.17
(mg) total cannabinoids/medible	108.17

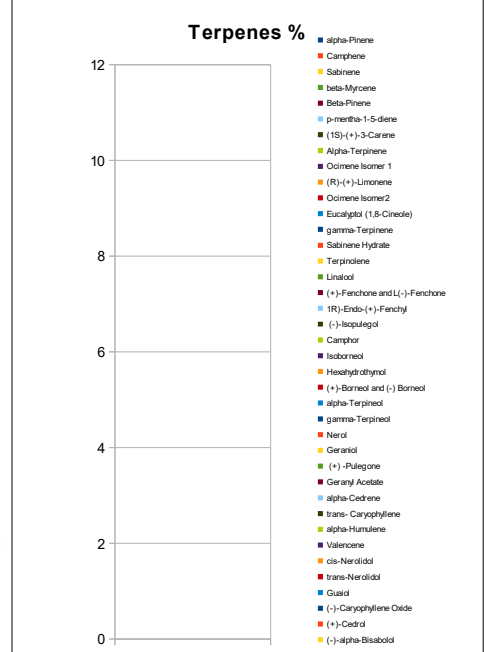
Terpene (GC-MS)	%	mg/g
Compound		
alpha-Pinene	NT	NT
Camphene	NT	NT
Sabinene	NT	NT
beta-Myrcene	NT	NT
Beta-Pinene	NT	NT
p-mentha-1-5-diene	NT	NT
(1S)-(+)-3-Carene	NT	NT
Alpha-Terpinene	NT	NT
Ocimene Isomer 1	NT	NT
(R)-(+)-Limonene	NT	NT
Ocimene Isomer2	NT	NT
Eucalyptol (1,8-Cineole)	NT	NT
gamma-Terpinene	NT	NT
Sabinene Hydrate	NT	NT
Terpinolene	NT	NT
Linalool	NT	NT
(+)-Fenchone and L(-)-Fenchone	NT	NT
1R)-Endo-(+)-Fenchyl	NT	NT
(-)-Isopulegol	NT	NT
Camphor	NT	NT
Isoborneol	NT	NT
Hexahydrothymol	NT	NT
(+)-Borneol and (-) Borneol	NT	NT
alpha-Terpineol	NT	NT
gamma-Terpineol	NT	NT
Nerol	NT	NT
Geraniol	NT	NT
(+) -Pulegone	NT	NT
Geranyl Acetate	NT	NT
alpha-Cedrene	NT	NT
trans-Caryophyllene	NT	NT
alpha-Humulene	NT	NT
Valencene	NT	NT
cis-Nerolidol	NT	NT
trans-Nerolidol	NT	NT
Guaiol	NT	NT
(-)-Caryophyllene Oxide	NT	NT
(+)-Cedrol	NT	NT
(-)-alpha-Bisabolol	NT	NT
Total Terpenes	NT	NT

Sample Image

Micro Visual: NOT TESTED
Microbial Plate: NOT TESTED
Percent Moisture
NT

Metals	PPM	RL
Compound		
Mercury	NT	0.001
Lead	NT	0.020
Arsenic	NT	0.020
Cadmium	NT	0.010

Pesticides	PPM	RL
Compound		
Quinoxifen	NT	2.0
Myclobutanil	NT	2.0
Azoxystrobin	NT	1.0
Daminozide	NT	1.0
Paclbutrazol	NT	2.0
B-cyfluthrin	NT	4.0

RL=Reporting Limit
NA=Not Applicable
NT=Not Tested



Chemist: TS
7