

FROG KICKSTAND INSTALLATION

We hope your child is loving their Frog Bike! Included below are the installation instructions for your new Frog Kickstand. The kickstand is available in 2 sizes:

- SMALL → Fits the Frog 40, 43, 44 and 48
- LARGE → Fits all other Frog bikes

The installation process is the same for both the Small and Large kickstands.

WHAT YOU'LL NEED

- ✓ 14mm Adjustable Spanner / Ratchet / Wrench
- ✓ 2.5mm Allen Wrench

INSTALLING YOUR KICKSTAND

The most useful resource for installing your Frog Kickstand is Frog's YouTube video:

HOW TO ATTACH A FROG KICK STAND TO A KID'S BIKE

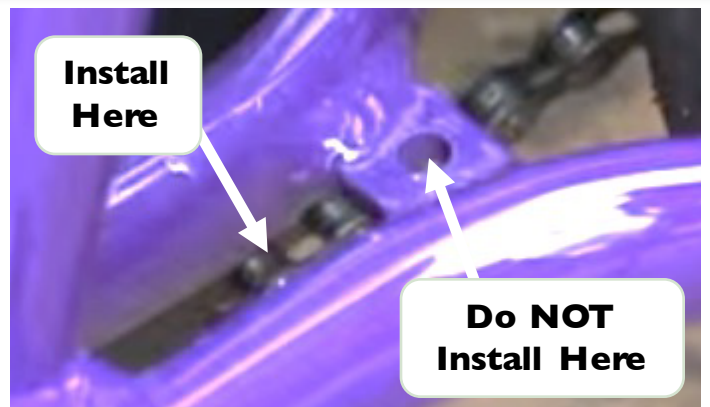


www.youtube.com/watch?v=0kBZxZGYnwQ

Frog has made an improvement to their kickstands that is not reflected in the installation video. When adjusting the kickstand's height, there is no longer a Phillips head grub screw that protrudes out from the telescoping leg. This screw has been replaced by a recessed 2.5mm Allen bolt. This bolt adjusts with your 2.5mm Allen wrench just as the Phillips head screw is adjusted in the video.



The kickstand installs through the gap in the frame behind the bottom bracket. Please note that you do not use the hole in the frame brace.



FROG KICKSTAND INSTALLATION

ADJUSTING THE HEIGHT OF YOUR FROG KICKSTAND

We recommend the following lengths for the telescoping portion of the kickstand based on the size of your Frog bike:



FROG BIKE	KICKSTAND SIZE	EXTENDED LENGTH
Frog 40 Frog 44	Small	0.0 cm
Frog 52	Large	1.5 cm
Frog 55	Large	1.5 cm
Frog 62 Frog 69	Large	5.5 cm
Frog 73	Large	6.0 cm

We have several other helpful resources available online to assist with your Frog bike:

FROG BIKE ASSEMBLY & SUPPORT



SCAN ME

www.readysetpedal.com/pages/bike-assembly-support

