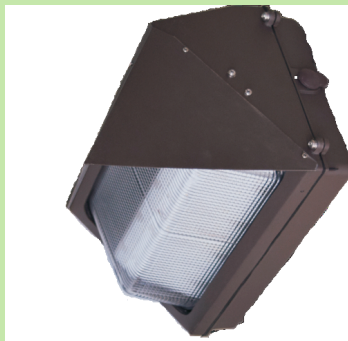




WALLPACK FIXTURES

Buildings, Shopping Malls, Courtyards, Walls, Warehouses, Hotels,
Schools, Hospitals, Churches, Etc



CATALOG

888-241-9498 | info@ecilight.com

957 Nasa Parkway #106 Houston, TX 77058

WALLPACK FIXTURES



Wallpacks are the most widely used commercial outdoor lighting fixtures used today. Wallpacks are powerful light fixtures that are installed in outdoor locations of commercial buildings. Wallpacks are different from more traditional forms of lighting because they must illuminate a large area while withstanding the elements and other forms of abuse that are commonly experienced in outdoor locations. Wall Packs are on just about every commercial warehouse, office building, hospital, hotel, mall, school, church, parking garage and areas where a commercial light fixture is required.



ECI-WP-SLP Series

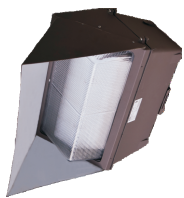


Before

After



ECI-WP-TSLP Series



ECI-WP-TSHP Series



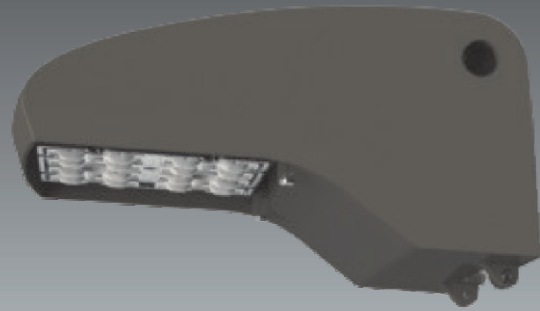
ECI-WP-FCO2M Series





Wallpack Fixtures

ECI-WP-SLP Series

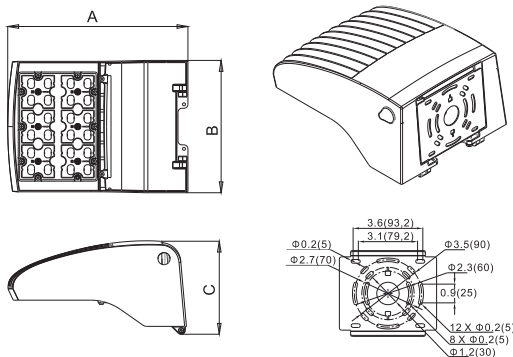


Applications

Parks, Shopping Malls, Courtyards, Historic Areas, etc.

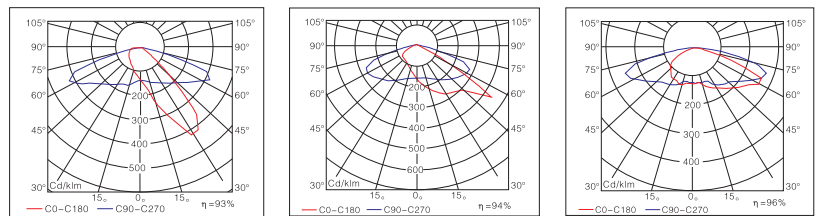
- Efficiency of chips: 150-165 lm/w, 170-180 lm/w
- LENS: Optical grade PC, anti-UV oxidation.
- Beam Angle: Type II, Type III, Type IV
- Housing: die casting aluminum housing with excellent heat dissipation, surface treated with powder coated finish for corrosion and static resistance.
- Input voltage: 100-277 VAC, 50/60 HZ
- LED module can be dismantled separately for maintenance.
- LED driver: constant current, efficiency is up to 92%, PF ≥ 0.95.
- IP class: IP 65

Dimension [Inch(mm)]



Model	A	B	C
ECI-1WPSLPS	10.7(273)	8.35(212)	5.6(142)
ECI-WPSLPL	11.8(300)	11.6(295)	6.0(153)

Distribution Curve Flux



Type II

Type III

Type IV

Ordering Information

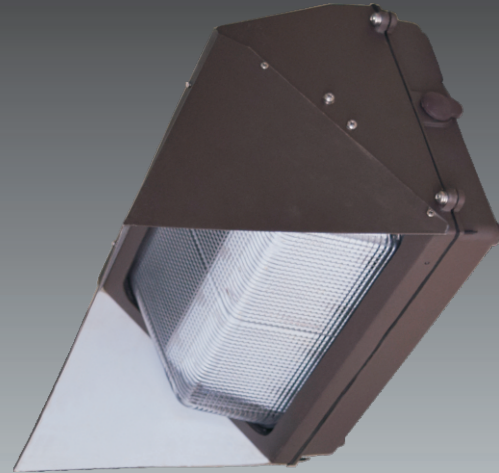
Example: **ECI-1WPSLPL-80-750-C-3-1**

Company code	Voltage	Type	Power	Ra	Colour Temp.	Colour Options	Optic	Options
ECI	1 100~277VAC 2 200~240VAC 3 100~120VAC 4 277~480VAC 5 347~480VAC	WPSLPS	40 (40W 4950Lumens)	7	27	C	2	1
			40P(40W 5450Lumens)	70	2700K	Coffee (standard)	Type II	0~10V dimming
			50 (50W 5850Lumens)	8	30	B	3	Timing dimming
			50P(50W 6450Lumens)	80	3000K	Black	Type III	3
			60 (60W 6500Lumens)	9	40	S	4	Occupancy sensor (dimming control/ on off control)
		WPSLPL	60P(60W 7200Lumens)	90	4000K	Silver	Type IV	4A 120V photocell
			80 (80W 8320Lumens)		50			4D 277V photocell
			100 (100W 10080Lumens)		5000K			5
			60 (60W 10080Lumens)		57			Wireless
			80 (80W 10700Lumens)		5700K			
	100 (100W 13000Lumens)		65					
	120 (120W 15150Lumens)		6500K					
	150 (150W 17500Lumens)							



Wallpack Fixtures

ECI-WP-TSLP Series



UL1598

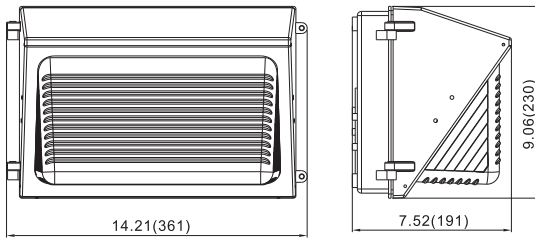


Applications

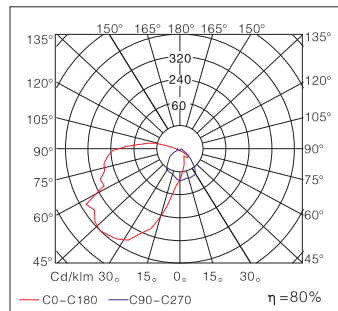
Parks, Shopping Malls, Courtyards, Historic Areas, etc.

- Efficiency of chips: 150-165 lm/w
- Cover: glass, PC cover is also available.
- Beam Angle: asymmetry distribution
- Housing: die casting aluminum housing with excellent heat dissipation, surface treated with powder coated finish for corrosion and static resistance.
- Input voltage: 100-277 VAC, 50/60 HZ
- LED driver: constant current, efficiency is up to 92%, PF ≥ 0.95.
- IP class: IP 65

Dimension [Inch(mm)]



Distribution Curve Flux



ECI-1WPTSLP-40-750

Ordering Information

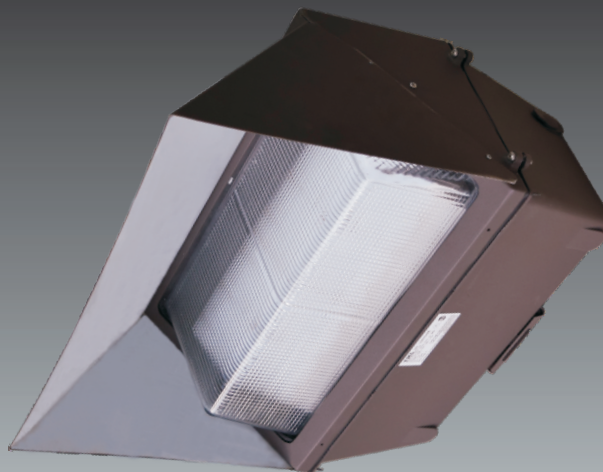
Example: **ECI-1WPTSLP-40-750-C-A-1**

Company code	Voltage	Type	Power	Ra	Colour Temp.	Colour Options	Optic	Options
ECI	1 100-277VAC 2 200-240VAC 3 100-120VAC 4 277-480VAC 5 347-480VAC	WPTSLP	40 (40W 3750Lumens) 60 (60W 5600Lumens)	7 70 8 80 9 90	27 2700K 30 3000K 40 4000K 50 5000K 57 5700K 65 6500K	C Coffee (standard) B Black S Silver	A asymmetry distribution	1 0-10V dimming 5 Wireless

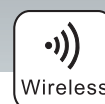


Wallpack Fixtures

ECI-WP-TSHP Series



UL1598

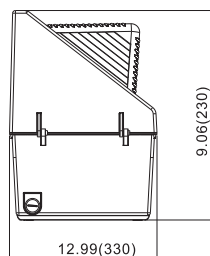
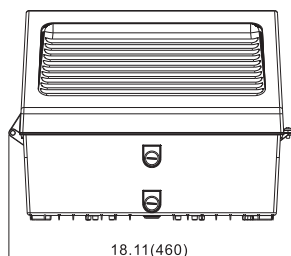


Applications

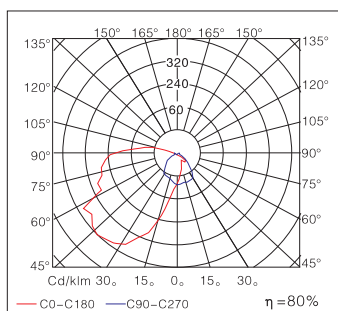
Parks, Shopping Malls, Courtyards, Historic Areas, etc.

- Efficiency of chips: 150-165 lm/w
- Cover: glass, PC cover is also available.
- Beam Angle: asymmetry distribution
- Housing: die casting aluminum housing with excellent heat dissipation, surface treated with powder coated finish for corrosion and static resistance.
- Input voltage: 100-277 VAC, 50/60 HZ
- LED driver: constant current, efficiency is up to 92%, PF ≥ 0.95.
- IP class: IP 65

Dimension [Inch(mm)]



Distribution Curve Flux



ECI-1WPTSHP-100-750

Ordering Information

Example: **ECI-1WPTSHP-80-750-C-A-1**

Company code	Voltage	Type	Power	Ra	Colour Temp.	Colour Options	Optic	Options
ECI	1 100-277VAC	WPTSHP	80 (80W 6850Lumens)	7	27	C	A	1
	2 200-240VAC		100 (100W 8200Lumens)	70	2700K	Coffee (standard)	asymmetry distribution	0-10V dimming
	3 100-120VAC		8	30	Black		5	
	4 277-480VAC		80	3000K	S		Wireless	
	5 347-480VAC		90	4000K	S			
					50			
					5000K			
					57			
					5700K			
					65			
					6500K			



Wallpack Fixtures

ECI-WP-FCO2M Series



UL1598

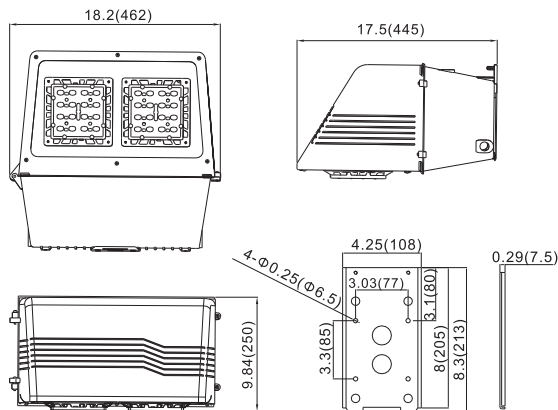


Applications

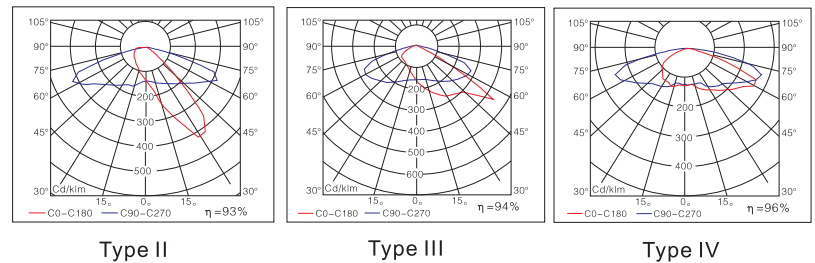
Parks, Shopping Malls, Courtyards, Historic Areas, etc.

- Efficiency of chips: 150-165 lm/w
- LENS: Optical grade PC, anti-UV oxidation.
- Beam Angle: Type II, Type III, Type IV
- Housing : die casting aluminum housing with excellent heat dissipation , surface treated with powder coated finish for corrosion and static resistance.
- Input voltage: 100-277 VAC, 50/60 HZ
- LED module can be dismantled separately for maintenance.
- LED driver: constant current, efficiency is up to 92%, PF \geq 0.95.
- IP class: IP 65

Dimension[Inch(mm)]



Distribution Curve Flux



Ordering Information

Example: ECI-WPFCO2M-80-750-C-3-1

Company code	Voltage	Type	Power	Ra	Colour Temp.	Colour Options	Optic	Options
ECI	1 100~277VAC 2 200~240VAC 3 100~120VAC 4 277~480VAC 5 347~480VAC	FCO2M	80 (80W 9500Lumens) 100 (100W 11500Lumens)	7 70 8 80 9 90	27 2700K 30 3000K 40 4000K 50 5000K 57 5700K 65 6500K	C Coffee (standard) B Black S Silver	2 Type II 3 Type III 4 Type IV	1 0~10V dimming 5 Wireless