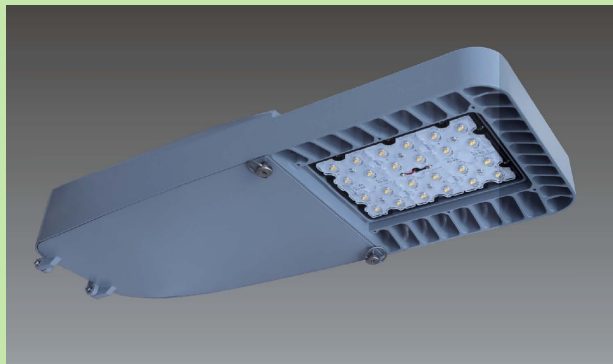




STREET LIGHT FIXTURES

Roadways, Freeways, Highways, Parking Lots, and Off-Street Areas



CATALOG

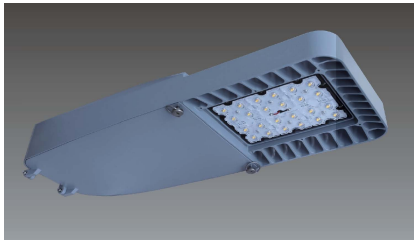
888-241-9498 | info@ecilight.com

957 Nasa Parkway #106 Houston, TX 77058

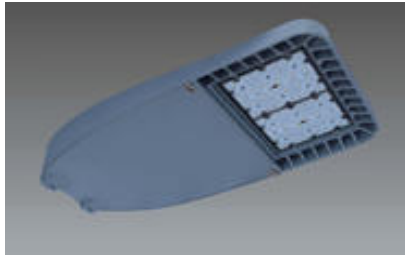
STREET LIGHT FIXTURES



Street lights light up the side of the road, alerting drivers to potential hazards and situations which they need to be aware of. They can also be used to signal the presence of an intersection, so that a driver can be prepared for cross traffic or get ready to turn onto a side street. Street lights are also a safety feature. Well lit areas tend to be less dangerous after dark because it is harder to commit a crime when the scene is fully illuminated. Street lights which keep parking lots and streets lit up at night make it safer for citizens to be out after dark.



ECI-SL-LPAW Series



ECI-SL-HPAW Series



ECI-SL-OVAL Series



ECI-SL-W Series



Before

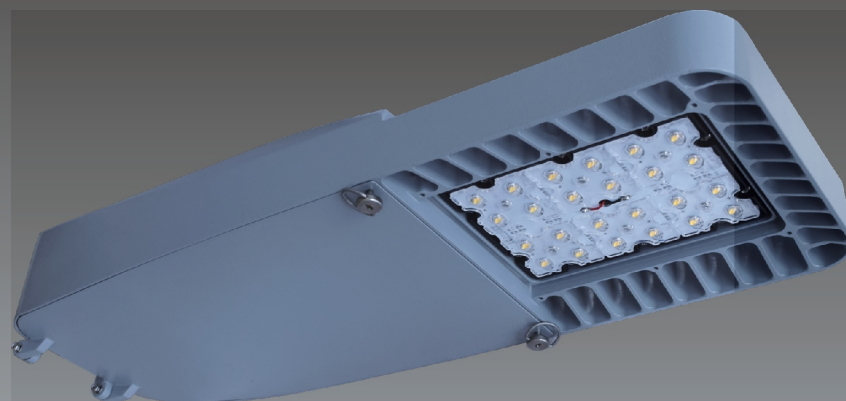
After





Street Light Fixtures

ECI-SL-LPAW Series



100
~
277V

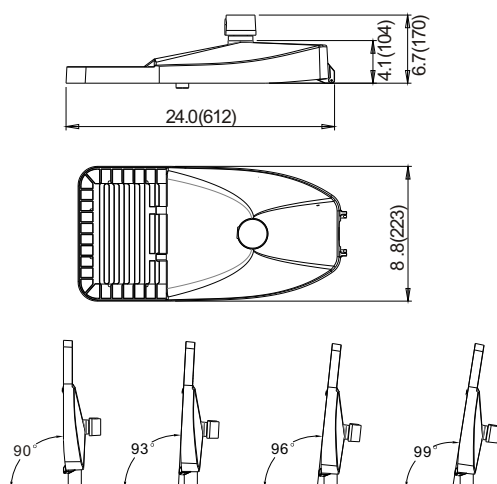
277
~
480V

Applications

Roadways, Freeways, Highways, Parking Lots, Off-streets Areas, etc.

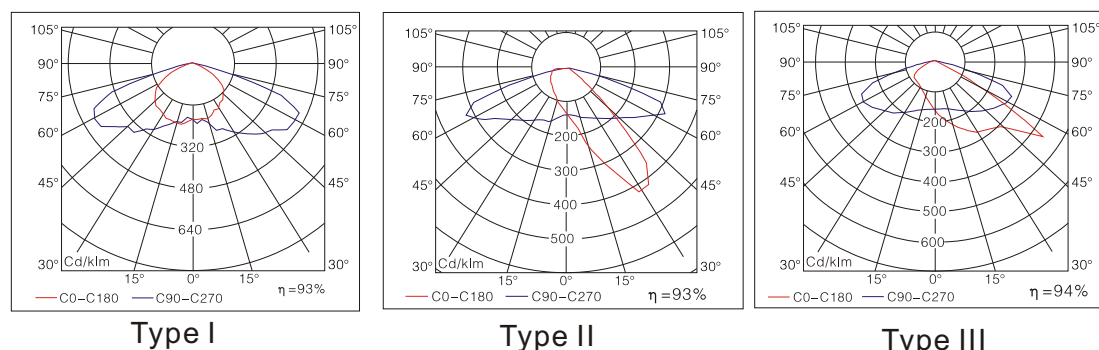
- Efficiency of chips: 150-165 lm/w, 170-180 lm/w
- LENS: Optical grade PC, anti-UV oxidation.
- Beam Angle: Type I, Type II, Type III
- Housing: die casting aluminum housing with excellent heat dissipation, surface treated with powder coated finish for corrosion and static resistance.
- Input voltage: 100-277 VAC, 277~480V, 50/60 HZ
- LED module can be dismantled separately for maintenance.
- LED driver: constant current, efficiency is up to 92%, PF ≥ 0.95.
- IP class: IP 65

Dimension [Inch(mm)]



Adjustable Angles

Distribution Curve Flux



Type I

Type II

Type III

Ordering Information

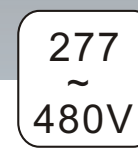
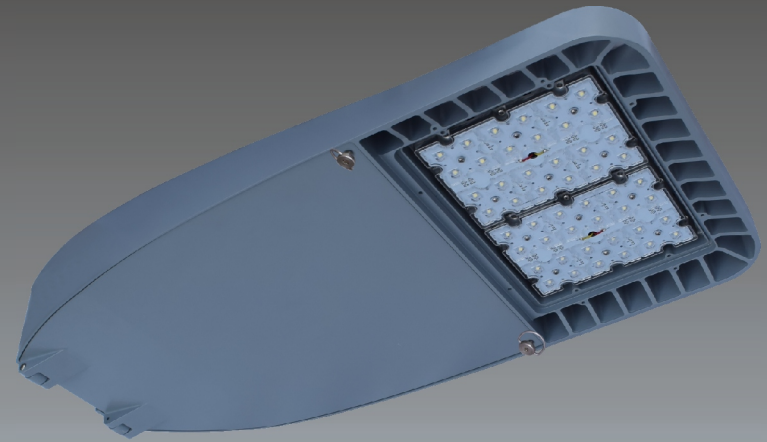
Example: **ECI-1SLLPAW-40-750-S-2-1**

Company code	Voltage	Type	Power	Ra	Colour Temp.	Colour Options	Optic	Options
ECI	1	SL LPAW	40 (40W 4160Lumens)	7	27	S Silver(standard) B Black C Coffee	1	1 0~10V dimming 2 Timing dimming 3 Occupancy sensor (dimming control/ on off control) 4 Photocell
	100~277VAC		40P (40W 5200Lumens)	70	2700K		Type I	
	2		50 (50W 5100Lumens)	8	30		2	
	200~240VAC		50P (50W 6300Lumens)	80	3000K		Type II	
	3		60 (60W 6240Lumens)	9	40		3	
	100~120VAC		60P (60W 7800Lumens)	90	4000K		Type III	
	4		80 (80W 8030Lumens)		50			
	277~480VAC		80P (80W 10000Lumens)		5000K			
	5				57			
	347~480VAC				5700K			
			65					
			6500K					



Street Light Fixtures

ECI-SL-HPAW Series

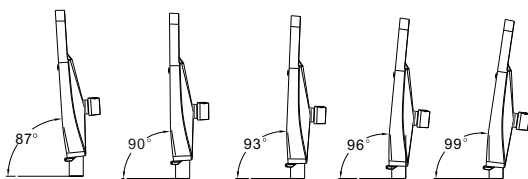
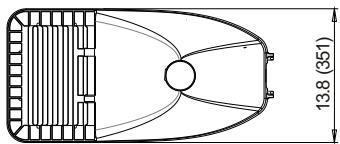
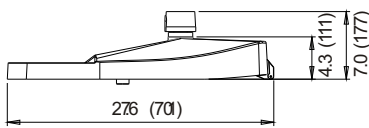


Applications

Roadways, Freeways, Highways, Parking Lots, Off-streets Areas, etc.

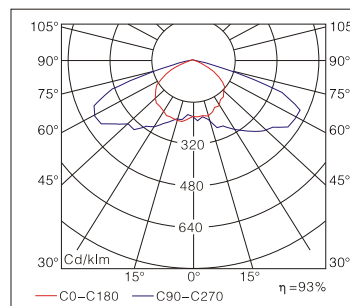
- Efficiency of chips: 150-165 lm/w, 170-180 lm/w
- LENS: Optical grade PC, anti-UV oxidation.
- Beam Angle: Type I, Type II, Type III, Type IV
- Housing: die casting aluminum housing with excellent heat dissipation, surface treated with powder coated finish for corrosion and static resistance.
- Input voltage: 100-277 VAC, 277~480VAC, 50/60 HZ
- LED module can be dismantled separately for maintenance.
- LED driver: constant current, efficiency is up to 92%, PF ≥ 0.95.
- IP class: IP 65

Dimension [Inch(mm)]

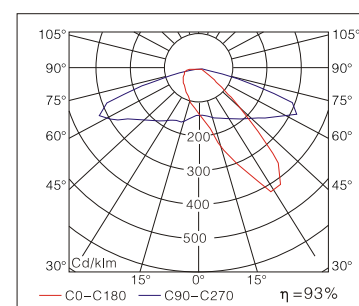


Adjustable Angles

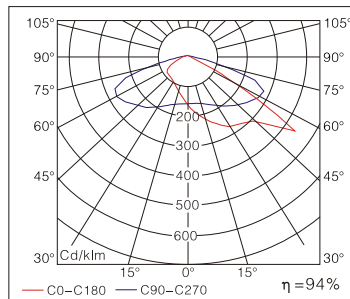
Distribution Curve Flux



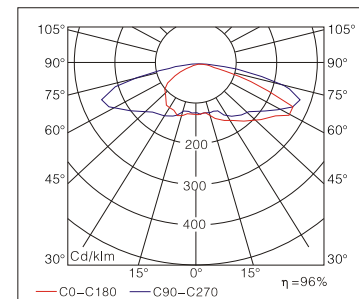
Type I



Type II



Type III



Type IV

Ordering Information

Example: **ECI-1SLHPAW-100P-750-S-2-1**

Company code	Voltage	Type	Power	Ra	Colour Temp.	Colour Options	Optic	Options
ECI	1 100~277VAC	SL HPAW	100 (100W 10300Lumens)	7	27	S Silver(standard) B Black C Coffee	1	1 0~10V dimming 2 Timing dimming 3 Occupancy sensor (dimming control/ on off control) 4 Photocell
	2 200~240VAC		100P (100W 12700Lumens)	70	2700K		Type I	
	3 100~120VAC		120 (120W 13000Lumens)	8	30		2	
	4 277~480VAC		120P (120W 15800Lumens)	80	3000K		Type II	
	5 347~480VAC		150 (150W 15350Lumens)	9	40		3	
			150P (150W 19000Lumens)	90	4000K		Type III	
			200 (200W 18900 Lumens)		50		4	
			200P (200W 24100 Lumens)		5000K		Type IV	
					57			
					5700K			
					65			
					6500K			



Street Light Fixtures

ECI-SL-OVAL Series

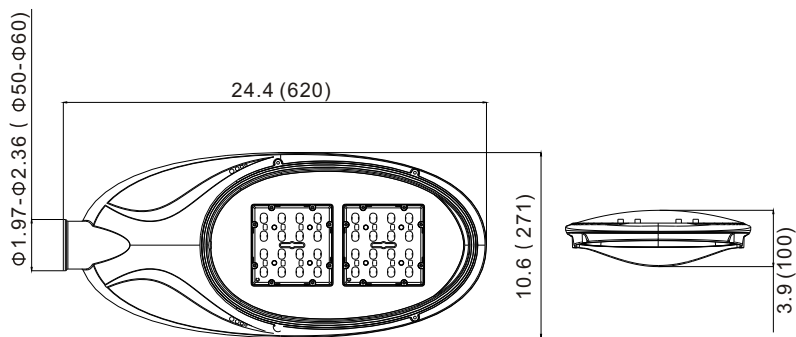


Applications

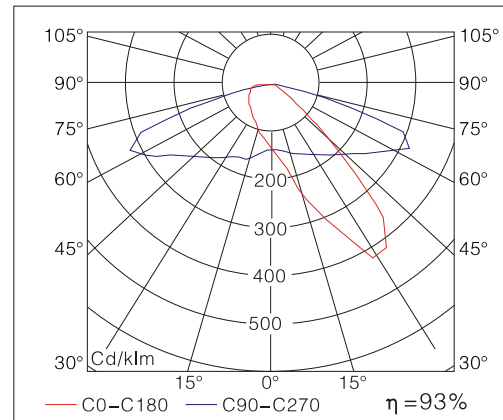
Roadways, Freeways, Highways, Parking Lots, Off-streets Areas, etc.

- Efficiency of chips: 150-165 lm/w, 170-180 lm/w
- LENS: Optical grade PC, anti-UV oxidation.
- Beam Angle: Type II, Type III
- Housing: die casting aluminum housing with excellent heat dissipation, surface treated with powder coated finish for corrosion and static resistance.
- Input voltage: 100-277 VAC, 50/60 HZ
- LED module can be dismantled separately for maintenance.
- LED driver: constant current, efficiency is up to 92%, PF ≥ 0.95.
- IP class: IP 65

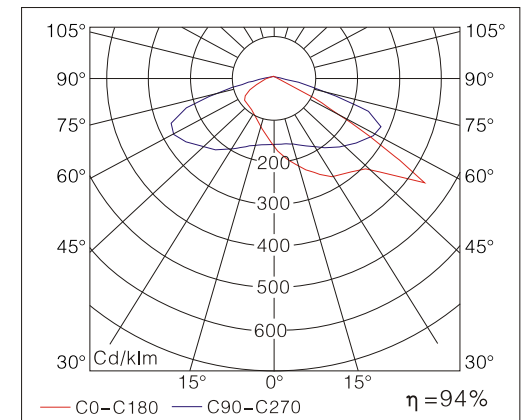
Dimension [Inch(mm)]



Distribution Curve Flux



Type II



Type III

Ordering Information

Example: **ECI-1SLOVAL-60-750-S-2-1**

Company code	Voltage	Type	Power	Ra	Colour Temp.	Colour Options	Optic	Options
ECI	1 100~277VAC	SLOVAL	40 (40W 4100Lumens)	7	27	S Silver (standard)	2 Type II	1 0~10V dimming
	2 200~240VAC		40P (40W 5300Lumens)	70	2700K			
	3 100~120VAC		60 (60W 6300Lumens)	8	30	B Black	3 Type III	
	4 277~480VAC		60P (60W 7900Lumens)	80	40	C Coffee		
	5 347~480VAC		90 (90W 9100Lumens)	9	50			
			90P (90W 11800Lumens)	90	5000K			
					57			
					5700K			
					65			
					6500K			



Street Light Fixtures

ECI-SL-W Series

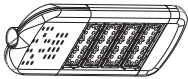
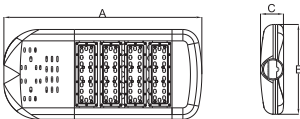


Applications

Roadways, Freeways, Highways, Parking Lots, Off-streets Areas, etc.

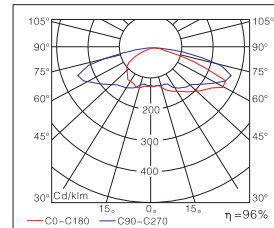
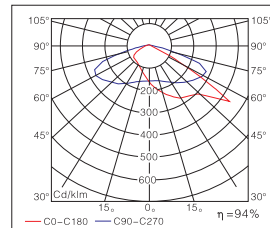
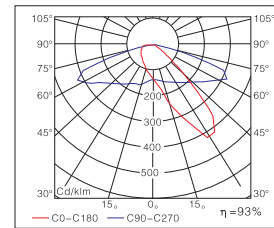
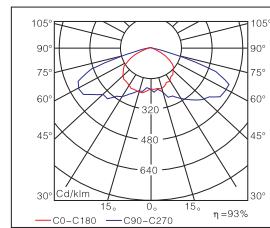
- Efficiency of chips: 150-165 lm/w, 170-180 lm/w
- LENS: Optical grade PC, anti-UV oxidation.
- Beam Angle: Type I, Type II, Type III, Type IV
- Housing: die casting aluminum housing with excellent heat dissipation, surface treated with powder coated finish for corrosion and static resistance.
- Input voltage: 100-277 VAC, 50/60 HZ
- LED module can be dismantled separately for maintenance.
- LED driver: constant current, efficiency is up to 92%, PF ≥ 0.95.
- IP class: IP 65

Dimension [Inch(mm)]



Qty of Module	Wattage	A	B	C
2	60-120	21.6(550)	13.0(331)	3.3(85)
3	80-150	25.2(640)	13.0(331)	3.3(85)
4	120-200	28.7(730)	13.0(331)	3.3(85)

Distribution Curve Flux



Ordering Information

Example: **ECI-1SLW-M-100-750-B-2-1**

Company code	Voltage	Type	QTY of Module	Power	Ra	Colour Temp.	Colour Options	Optic	Options	
ECI	1 100~277VAC	SLW	S 2 modules	60(60W 7160Lumens) S	7	27	B Black (standard)	1 Type I	1 0~10V dimming	
				80(80W 8850Lumens) S		70				2700K
	2 200~240VAC		M 3 modules	80(80W 9900Lumens) M	8	30	S Silver	2 Type II	3 Type III	4 Type IV
				100(100W 10550Lumens) S		80				
	3 100~120VAC		L 4 modules	100(100W 11850Lumens) M	9	40	50	5700K	4 Type IV	
				120(120W 11750Lumens) S		90				
	4 277~480VAC			120(120W 13400Lumens) M		50	5000K			
				120(120W 14250Lumens) L						
	5 347~480VAC			135(135W 14000Lumens) M		57	65	6500K		
				135(135W 16000Lumens) L						
				150(150W 15700Lumens) M		65				
				150(150W 17500Lumens) L						
				180(180W 19850Lumens) L						
				200(200W 21300Lumens) L						