



SHOEBOX FIXTURES

Parking Lots, Pedestrian Walkways, Roadways and Other Outdoor Applications



CATALOG

888-241-9498 | info@ecilight.com

957 Nasa Parkway #106 Houston, TX 77058

SHOEBOX FIXTURES



Shoebox-style LED parking lot and pole area lights cut energy and maintenance costs by a significant amount. Our LED parking lot lights are ideal for walkways, car dealerships, shopping centers, industrial parking lots, airports and more.



ECI-SB-SL4M Series



ECI-SB-SL2M Series



ECI-SB-S Series



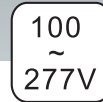


Shoe Box Fixtures

ECI-SB-SL4M Series



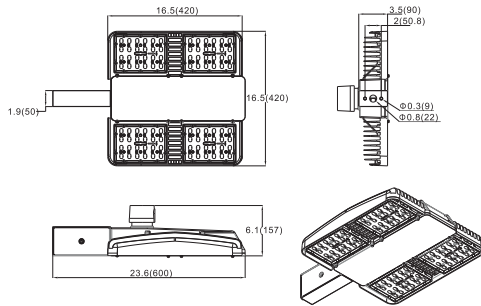
Mounting Mode Options



Applications

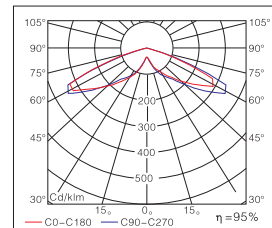
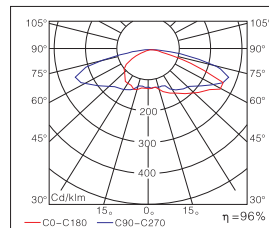
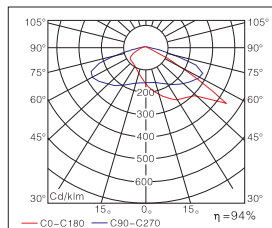
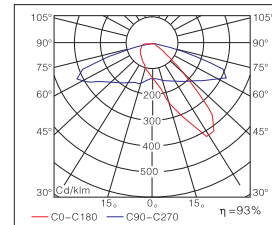
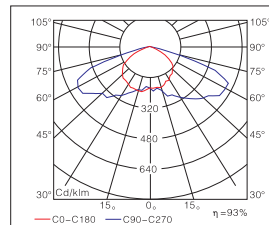
Parking lots, pedestrian walkways, roadways and other outdoor applications.

Dimension [Unit:Inch(mm)]



- Efficiency of chips: 150-165 lm/w, 170-180 lm/w
- LENS: Optical grade PC, anti-UV oxidation.
- Beam Angle: Type I, Type II, Type III, Type IV, Type V
- Housing: die casting aluminum housing with excellent heat dissipation, surface treated with powder coated finish for corrosion and static resistance.
- Input voltage: 100-277 VAC, 277~480VAC, 50/60 HZ
- LED module can be dismantled separately for maintenance.
- LED driver: constant current, efficiency is up to 92%, PF ≥ 0.95.
- IP class: IP 65

Distribution Curve Flux



Ordering Information

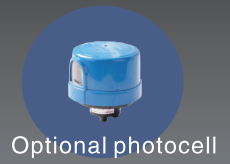
Example: **ECI-1SBSL4M-150-750-C-E7-3-1**

Company code	Voltage	Type	Power	Ra	Colour Temp.	Colour Options	Mounting	Optic	Options
ECI	1	SBSL4M	150 (150W 19200Lumens)	7	27	C	S	1	1
	100~277VAC		150P (150W 21100Lumens)	70	2700K	Coffee (standard)	Slip fitter	Type I	0~10V dimming
	2		200 (200W 23400Lumens)	8	30	B	U bracket	Type II	Timing dimming
	200~240VAC		200P (200W 25750Lumens)	80	3000K	Black	E7	3	Occupancy sensor (dimming control/ on off control)
	3		240 (240W 26150Lumens)	9	40	S	Straight arm	Type III	4
	100~120VAC		240P (240W 28750Lumens)	90	4000K	Silver	E7B	Type IV	5
	4		300 (300W 35400Lumens)	50	5000K	Straight arm+ fixing seat	Type V	5	
	277~480VAC		300P (300W 38950Lumens)	57	5700K	E8	4		
	5			65	6500K	Straight arm	5		
	347~480VAC							Wireless	

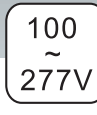


Shoe Box Fixtures

ECI-SB-SL2M Series



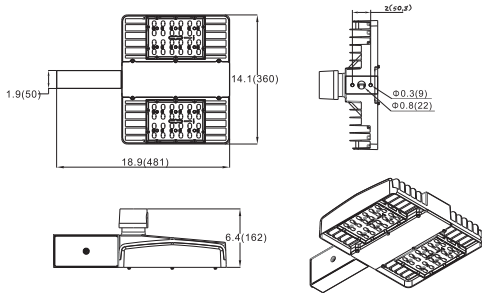
Mounting Mode Options



Applications

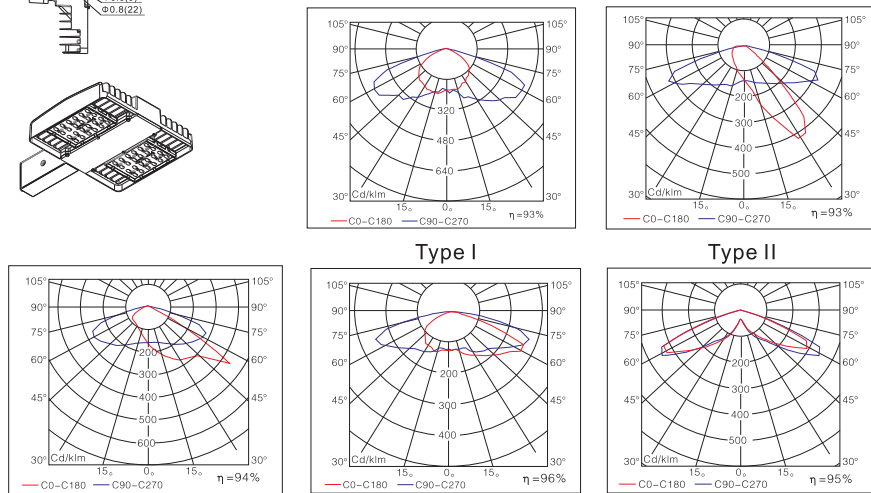
Parking lots, pedestrian walkways, roadways and other outdoor applications.

Dimension [Unit:Inch(mm)]



- Efficiency of chips: 150-165 lm/w, 170-180 lm/w
- LENS: Optical grade PC, anti-UV oxidation.
- Beam Angle: Type I, Type II, Type III, Type IV, Type V
- Housing: die casting aluminum housing with excellent heat dissipation, surface treated with powder coated finish for corrosion and static resistance.
- Input voltage: 100-277 VAC, 277~480VAC, 50/60 HZ
- LED module can be dismantled separately for maintenance.
- LED driver: constant current, efficiency is up to 92%, PF ≥ 0.95.
- IP class: IP 65

Distribution Curve Flux



Ordering Information

Example: **ECI-1SBLSL2M-150-750-C-E7-3-1**

Company code	Voltage	Type	Power	Ra	Colour Temp.	Colour Options	Mounting	Optic	Options
ECI	1 100~277VAC	SBSL2M	60 (60W 7800Lumens)	7	27	C	S	1	1
	2 200~240VAC		60P(60W 8580Lumens)	70	2700K	B	Slip flitter	Type I	0~10V dimming
	3 100~120VAC		80 (80W 9900Lumens)	80	3000K	S	U bracket	Type II	Timing dimming
	4 277~480VAC		100 (100W 11700Lumens)	90	4000K	S	E7	Type III	Occupancy sensor (dimming control/ on off control)
	5 347~480VAC		120P(120W 16500Lumens)	100	5700K	S	E7B	Type IV	Photocell
			150 [(150W 18000Lumens)]		50				5
			150P(150W 19800Lumens)		65				Wireless
					6500K				

Notes: Occupancy sensor not available for 100W and 150W fixtures with high voltage 277-480VAC.



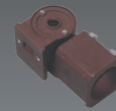
Shoe Box Fixtures

ECI-SBS Series

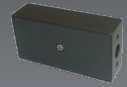
- Efficiency of chips: 150-165 lm/w
- LENS: Optical grade PC, anti-UV oxidation.
- Beam Angle: Type II, Type III, Type IV, TypeV



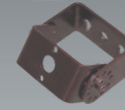
Mounting Mode Options



Slip Flitter



E7 Straight Arm



U-Bracket



Straight Arm + Fixing Seat



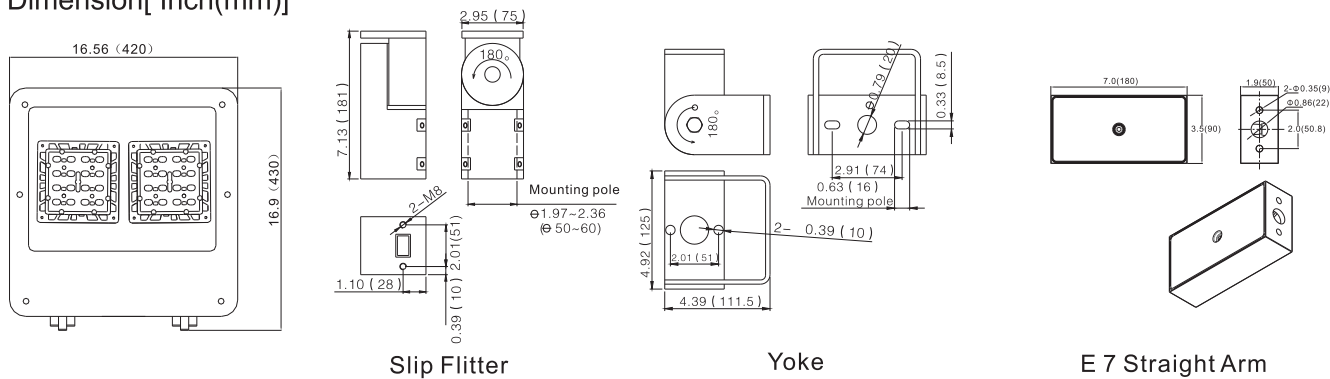
UL1598



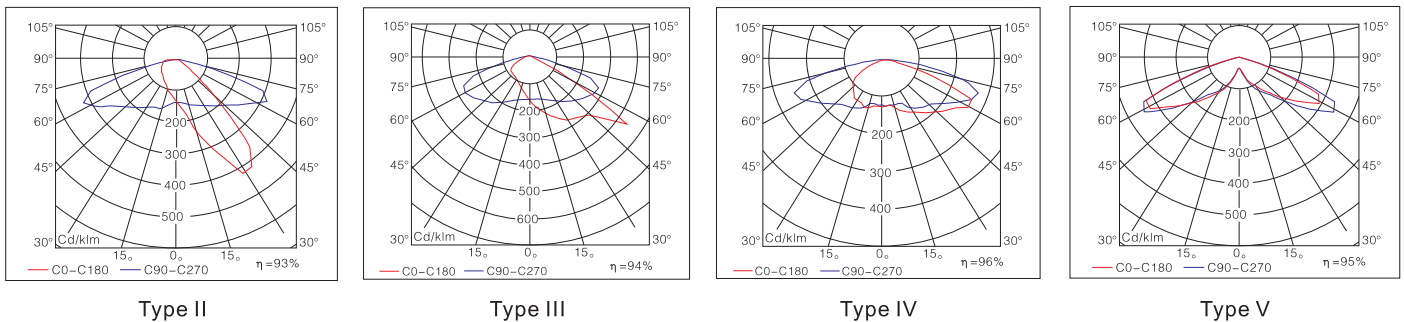
Applications

Parking Lots, Pedestian Walkways and other Outdoor Applications.

Dimension [Inch(mm)]



Distribution Curve Flux



Ordering Information

Example: **ECI-1SBS-80-750-C-E7-3-1**

Company code	Voltage	Type	Power	Ra	Colour Temp.	Colour Options	Mounting	Optic	Options					
ECI	1 100~277VAC	SBS	80 (80W 9500Lumens) 100 (100W 11500Lumens)	7 70	27 2700K	C Coffee(standard)	S Slip flitter	2 Type II	1 0~10V dimming					
	2 200~240VAC									8 80	30 3000K	B Black	Y U bracket	3 Type III
	3 100~120VAC									9 40	40 4000K	S Silver	E7 Straight arm	4 Type IV
	4 277~480VAC									50 5000K	E7B Straight arm+ fixing seat	5 Type V		
	5 347~480VAC									57 5700K				
				65 6500K										